

# MINI PC

## QUICK START GUIDE

### Start

1. Put your mini PC with power.
2. Plug your keyboard and mouse into USB port.
3. Make sure HDMI is connected to monitor or TV, and Input source is right. There will show No signal with wrong input source.
4. Press power button.

### Wizard of Windows when first boot

1. Select your language and region.
2. Choose your keyboard layout.
3. Create your account.

### Frequently asked questions



\*Mini PC is power up and power LED is on, but no display on monitor.

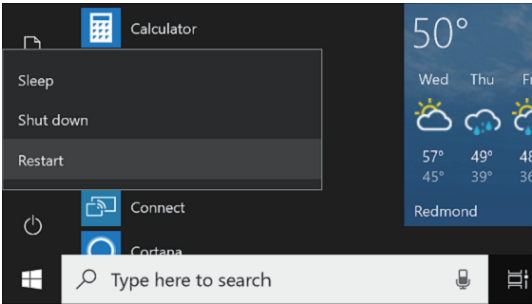
1. Make sure HDMI cable is connected tightly.
2. Make sure input source of your monitor is right.
3. Replace another HDMI cable or monitor.

1

\*How to do factory reset for mini PC when you forget password?

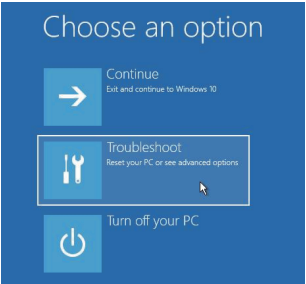
Notice: All data will be clean after this action.

Step 1: Go to Start , select the Power  button, then hold shift and select Restart.



2

Step 2: Select "Troubleshoot".

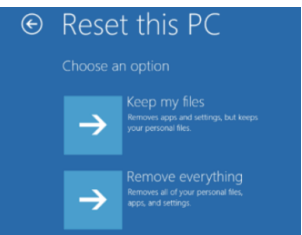


Step 3: Select "Reset this PC".



3

Step 4: Select "Remove everything".

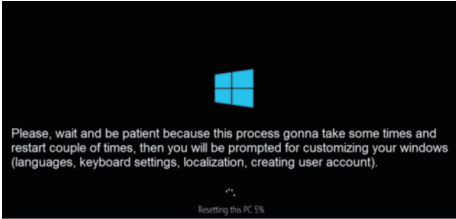


Step 5: Select "Just remove my files".



4

Step 6: Please wait and be patient about 30 minutes.



\*How to set automatic power up when power lose?

Step 1: Power up your mini PC, then press "Del" or "Delete" button to enter BIOS.  
Step 2: Switch to "Boot" menu and find option "Auto Power", then select "Power On".  
Step 3: Press "F4" for save and exit from BIOS. Also you should click yes on pop-up window.

\*Why mini PC can not found the 2.5 inch SSD/HDD?

Create and format partitions with "Windows Disk Manager" or third-part partition tool.

\*Why mini PC show blue screen?

So many reasons will cause it, such as lose power, update, force restart. Try restart your mini PC first. Maybe you should reinstall windows.

\*I can't hear any sound on mini PC.

Step 1: Make sure the sound card driver is installed correctly.  
Step 2: Click speak icon on taskbar, and click top bar on sub menu, then select the right audio device.  
Step 3: Make sure volume is loud enough.

5

### Compliance FCC Statement

This equipment has been tested and found to comply with the limits for a Class B digital device, pursuant to part 15 of the FCC Rules. These limits are designed to provide reasonable protection against harmful interference in a residential installation. This equipment generates, uses and can radiate radio frequency energy and, if not installed and used in accordance with the instructions, may cause harmful interference to radio communications. However, there is no guarantee that interference will not occur in a particular installation. If this equipment does cause harmful interference to radio or television reception, which can be determined by turning the equipment off and on, the user is encouraged to try to correct the interference by one or more of the following measures:

- Reorient or relocate the receiving antenna.
- Increase the separation between the equipment and receiver.
- Connect the equipment into an outlet on a circuit different from that to which the receiver is connected.
- Consult the dealer or an experienced radio/ TV technician for help.

This device complies with part 15 of the FCC Rules. Operation is subject to the following two conditions:

- (1) This device may not cause harmful interference.
- (2) This device must accept any interference received, including interference that may cause undesired operation.

### Cautions

Any changes or modifications not expressly approved by the party responsible for compliance could void the user's authority to operate the equipment.

### FCC Radiation Exposure Statement

This equipment must be installed and operated in accordance with provided instructions and the antenna(s) used for this transmitter must be installed to provide a separation distance of at least 20cm from all persons and must not be co-located or operating in conjunction with any other antenna or transmitter. End-users and installers must be provided with antenna installation instructions and transmitter operating conditions for satisfying FCC exposure compliance.

6