

1.字体颜色: 黑色 Pantone Black 3 C
 橙色 Pantone 1505C

2.单页尺寸: 140x144mm, （七折页）展开尺寸: 980x144mm

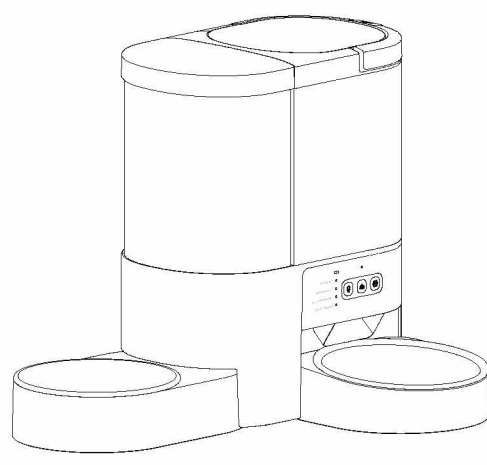
3.材质: 128G双铜, 双面彩色印刷

折页首页

Smart All-in-One Pet Feeder & Water Dispenser

User Manual

WiFi Edition



Please read the user guide carefully before using the product.

Safety precautions:

- When children use this product, they must be supervised by parents.
- Do not use the device for pets that cannot reach the food bowl or have physical disabilities.
- Do not immerse the base in water to avoid damaging electronic components such as the control panel.
- Do not place any foreign objects in the device.
- Do not put wet food or spoiled pet food in the device.
- Do not disassemble the device by yourself.
- Do not modify the device.
- If the device malfunctions or has damaged parts, do not attempt to repair it yourself. Contact the dealer or customer service for assistance.
- Be sure to unplug the power cord when the product is not in use or before cleaning.
- If the power plug of the device gets wet, turn off the power of the socket and do not attempt to unplug the power plug.

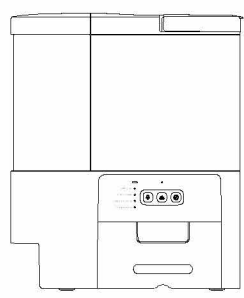
Cautions

- Do not let pets chew or swallow any accessories. If you are worried that the power cord may be chewed by pets, please purchase a wire conduit (hard plastic protector) at a hardware store to protect the power cord.
- The device works normally at an ambient temperature of 0°C-40°C. Do not place the device in direct sunlight or environments with inappropriate temperatures.
- Use alkaline size D batteries. Do not use rechargeable batteries.
- Please check the batteries regularly. If you are traveling or on a business trip for a long time, be sure to replace with new batteries.
- Do not lift the device directly from the lid, food tank, or food bowl. Lift and carry it by holding the base with both hands, and keep the device upright.
- Use dry food with a particle size of 5-14mm. Avoid food jamming or blockage of the food outlet caused by excessively large food particles.
- Read and follow all important instructions listed on the device and packaging carefully.

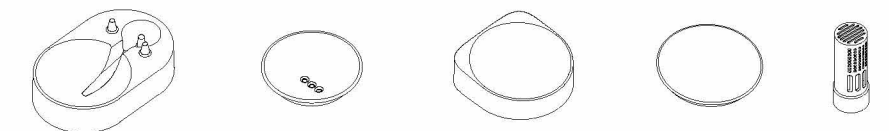
Packing list

After opening the product package, check if the device is intact and verify that the accessories are complete against the list.

Main unit



Accessories



① Water bowl tray ② Water bowl ③ Food bowl tray ④ Food bowl ⑤ Filter

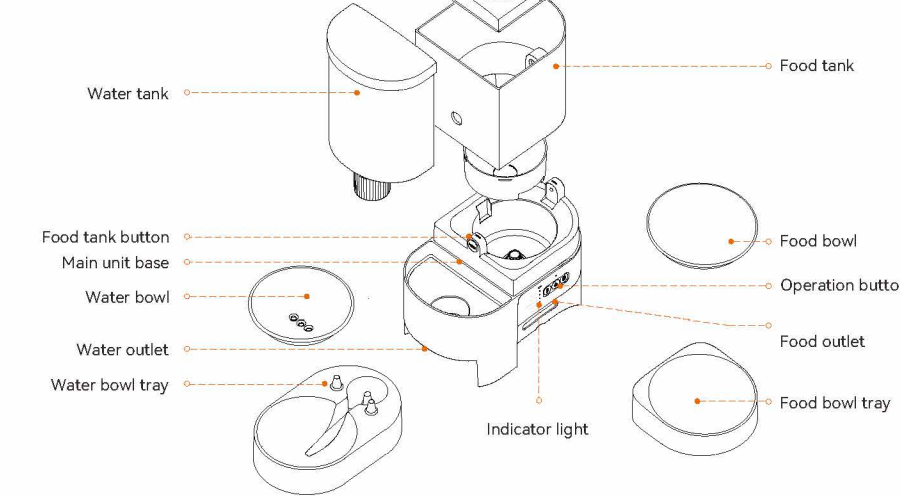


⑥ Power cord ⑦ Power adapter ⑧ User manual ⑨ Quick guide

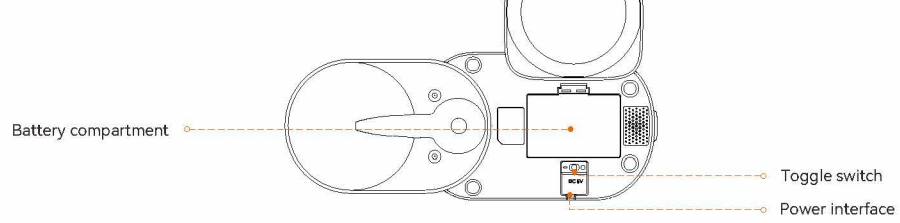
*Note: To provide better products, we regularly improve them. If there's a discrepancy between the product image and the actual product, the actual product shall prevail.

Product Diagram

Exploded View



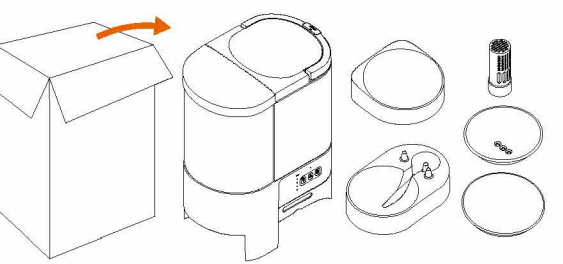
Bottom View



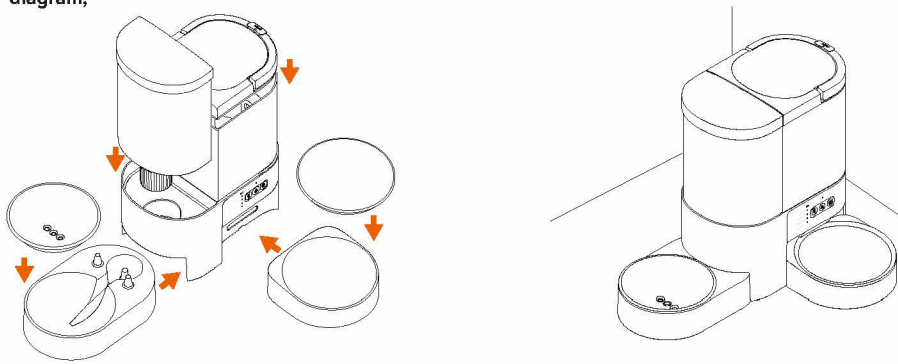
Product Assembly

1. Take out the main unit and the following accessories from the package: filter element, water bowl, food bowl, water bowl tray, food bowl tray;

2. Install the filter as shown in the diagram; Note: The filter has a certain service life, and it is recommended to replace it regularly.



4. Place the Machine on a level surface.



Buttons and Indicator Lights Description



Button	Function
Record	Record
Unlock/Feed	Unlock/Feed
Restore Factory Settings	Restore Factory Settings

Note: For specific operations, please refer to the instructions for use.

Indicator Light	Indicator Light Status	Function
Overall Status Light	White light flashes	Network configuration in progress /failed/device offline
	White light solid	Network configuration successful
	White light pulses	Battery mode
	Red light (consistent with fault light)	Low battery / Insufficient food
Battery low	Yellow light (consistent with fault light)	Food outlet blocked / Feeding abnormal
	Red light solid	Low battery
Insufficient food	Red light flashes	Insufficient food
	Yellow light solid	Food outlet blocked
Food outlet blocked	Yellow light flashes	Feeding abnormal
	Yellow light solid	Feeding abnormal

Note: 1) When the device malfunctions (low battery, insufficient food, food outlet blockage, abnormal food dispensing), the display screen will show an abnormality reminder.
2) Abnormal food dispensing: Failure to dispense food caused by reasons such as excessively large pet food particles.

Simple Troubleshooting

Solutions to problems

- Q: No response when pressing any button?**
A: The buttons automatically lock after 30 seconds of inactivity. Press and hold [Unlock/Feed] for 3 seconds to unlock the buttons.
- Q: Why does the device flash a red light when first powered on?**
A: The device has a food level detection function. When powered on, it detects the food level. If the food is low or insufficient, the device will flash a red light. In this case, please add enough pet food before use.
- Q: What if the device fails to configure the network?**
A: 1) In the unlocked state, press and hold [Record] for 6 seconds until you hear the voice prompt. "Restore factory settings"; the device enters network configuration mode, then reconfigure the network.
2) Ensure the phone has Bluetooth and location enabled.
3) Keep the device and phone within the effective communication range of the router, less than 10 meters without wall obstruction.
4) Software conflicts on the phone may also cause network connection failure. Please restart the phone, turn off non-system software that starts automatically on boot, and try reconnecting.

The device does not dispense food?

- A: 1) Be sure to put dry food, and the diameter of the pet food should be 5-14mm.
2) When using battery power, check if the batteries are dead or leaking.
3) Check if the power adapter is connected.
4) Check if the food dispensing structure is abnormal. If so, clean the pet food in the food dispensing components and channel, then try to dispense food smoothly.

No response when turned on?

- A: Check if the power is properly plugged in and if the bottom toggle switch is turned on.

Note: If the fault cannot be resolved according to the guidelines, please contact the dealer or customer service in a timely manner.

折页尾页

FCC WARNING

This device complies with part 15 of the FCC Rules. Operation is subject to the following two conditions: (1) this device may not cause harmful interference, and (2) this device must accept any interference received, including interference that may cause undesired operation. Any changes or modifications not expressly approved by the party responsible for compliance could void the user's authority to operate the equipment.

NOTE: This equipment has been tested and found to comply with the limits for a Class B digital device, pursuant to Part 15 of the FCC Rules. These limits are designed to provide reasonable protection against harmful interference in a residential installation. This equipment generates, uses and can radiate radio frequency energy and, if not installed and used in accordance with the instructions, may cause harmful interference to radio communications. However, there is no guarantee that interference will not occur in a particular installation. If this equipment does cause harmful interference to radio or television reception which can be determined by turning the equipment off and on, the user is encouraged to try to correct the interference by one or more of the following measures:

- Reorient or relocate the receiving antenna.
- Increase the separation between the equipment and receiver.
- Connect the equipment into an outlet on a circuit different from that to which the receiver is connected.
- Consult the dealer or an experienced radio/TV technician for help.

To maintain compliance with FCC's RF Exposure guidelines, this equipment should be installed and operated with minimum distance between 20cm the radiator your body. Use only the supplied antenna.

Specifications

Food tank capacity: 4L
Water tank capacity: 3L
Power supply type: DC5V/1A power adapter; 3 alkaline size D batteries
Rated input: AC100-240V
Rated output: 5V 1A
Net weight: 3.1±0.1kg
Product size: 426*298*333mm
BE-081-D

Instructions for Use

01 | Connect to power

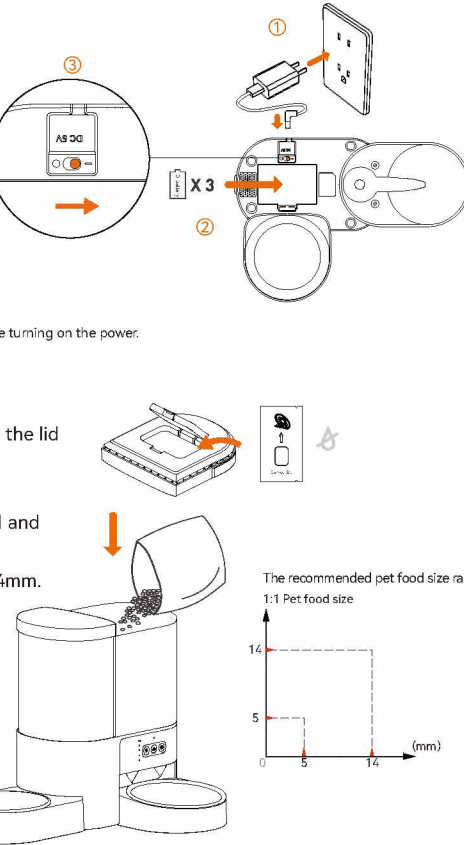
- Insert the 5V/1A power adapter into a socket, and connect it to the device.
- Open the battery compartment at the bottom of the device and install 3 alkaline size D batteries (optional) to prevent power failure.
- Turn on the bottom toggle switch, and the LED lights up to indicate that the device is powered on.

Note: 1) Batteries must be purchased by yourself.
2) Make sure that all components are clean and completely dry before turning on the power.

02 | Filling water and pet food

- After filling the water tank with water, tighten the lid until no water leaks when shaken;
- Pour pet food into the food tank;
- Open the desiccant cover on the food tank lid and place the desiccant inside;
- The recommended pet food size range is 5-14mm.

Note: Do not pour wet food into the food tank.



03 | Button unlocking/locking

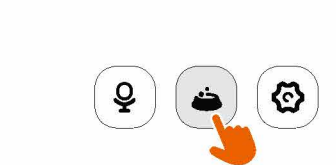
- Button unlocking:** Press and hold [Unlock/Feed] for 3 seconds; the device unlocks with two beeps.
- Button locking:** a) The device automatically locks with one beep after 30 seconds of inactivity; b) Press and hold [Unlock/Feed] for 3 seconds; the device locks with one beep; c) No buttons can be operated when locked.



04 | Manual feeding

In the unlocked state, press and hold [Unlock/Feed] briefly once to dispense 1 portion of food. If there is a recording, it will play once after food is dispensed.

Note: Manual feeding will not affect the feeding schedule set in the App.



05 | Food dispensing sound recording

- In the unlocked state, press and hold [Record] continuously; start recording after hearing a "beep", and end recording with two beeps when released. Recording lasts no more than 10 seconds.
- Press [Record] briefly once to play the recording once.



06 | Restore factory settings

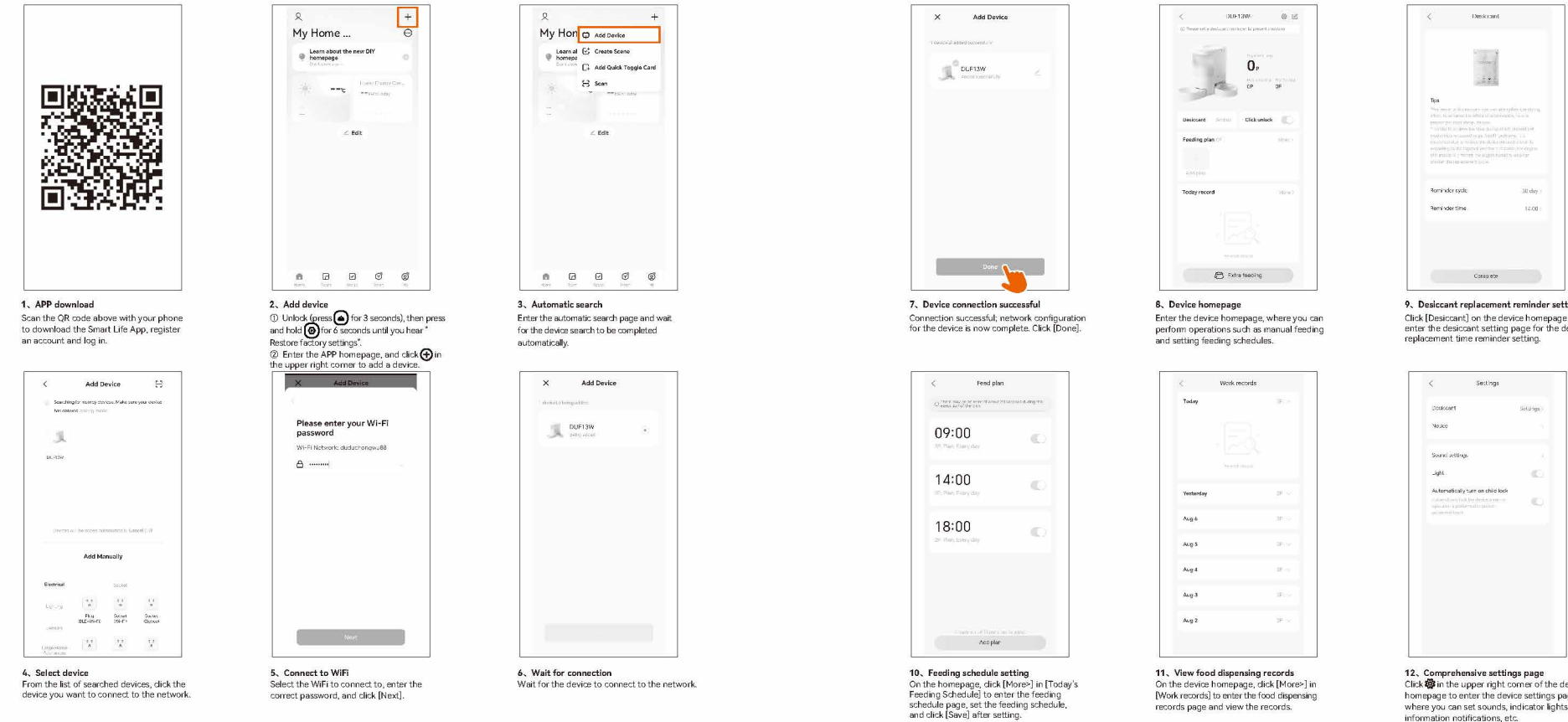
In the unlocked state, press and hold [Record] for 6 seconds; hear the voice prompt "Restore factory settings", all lights stay on for 6 seconds, and network configuration information, feeding schedules, and recording data are all cleared. The device automatically enters network configuration mode (white light flashing).



07 | Description of abnormal conditions

- Food outlet blockage:** Before feeding, the device will detect the food dispensing channel. If the food dispensing channel is blocked, the device will not perform feeding (including manual feeding and scheduled feeding) to avoid pet food accumulation. The device can operate normally only after the food dispensing channel is unblocked and the fault is resolved.
- If food cannot be dispensed due to reasons such as excessively large pet food particles, the device will issue an abnormal food dispensing warning. The device can operate normally only after the fault is resolved.

Smart Life APP Download and Operation



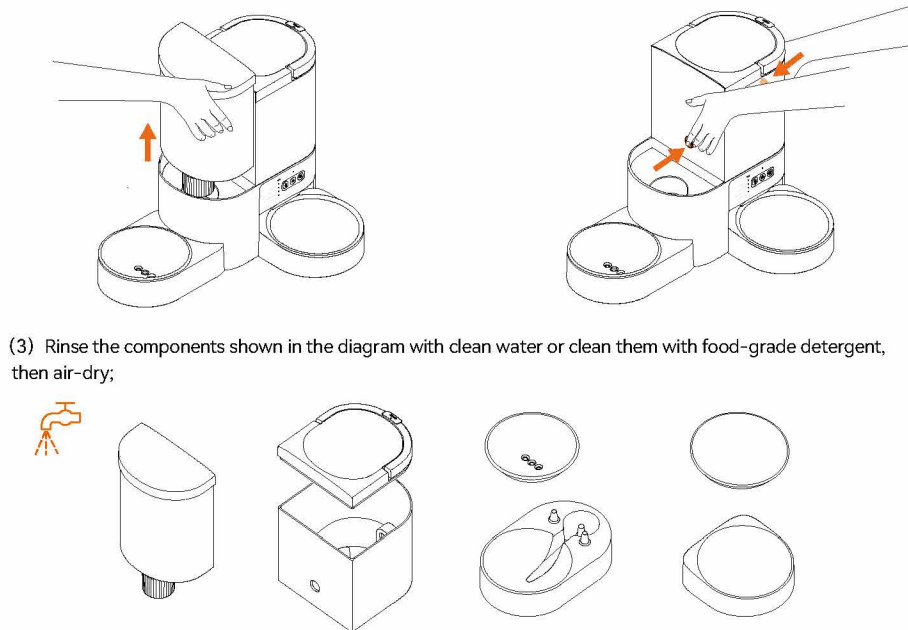
Routine maintenance instructions

- For the health of your pet, it is recommended to clean the device regularly;
- You can clean the device when there is scale in the water tank, the food tank starts to get dirty and there is a lot of loose food in the food trough;
- It is recommended to clean the water bowl every 7 days.

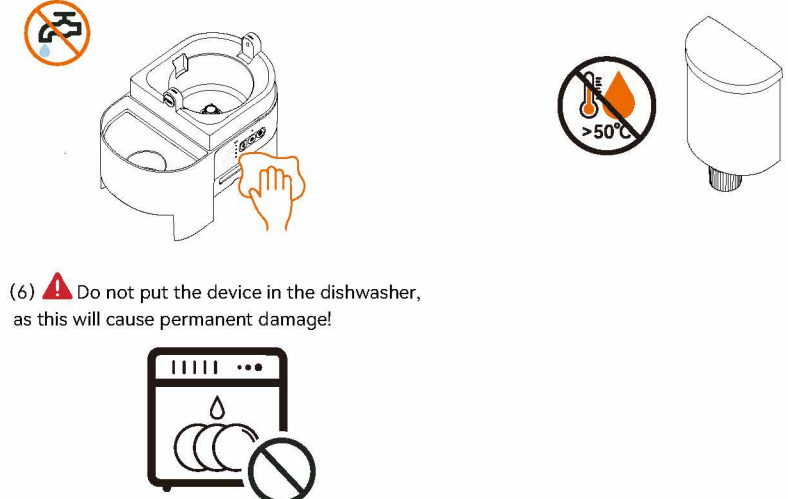
Cleaning instructions:

(1) Take out the water tank;

(2) Press the buttons on both sides of the food tank and take out the food tank;



- The main unit base can be wiped with a damp towel; do not rinse with water;
- Do not clean the water tank with water above 50°C;



Battery mode description

When the feeder is powered by batteries, the battery capacity is limited. To ensure long battery life and normal feeding, the feeder enters battery mode after 30 seconds of inactivity. This mode does not support remote operation via the App, but the set feeding schedule will be executed normally. The device can be woken up by pressing any button when the battery has power.