

1.字体颜色: 黑色 Pantone Black 3 C
橙色 Pantone 1505C

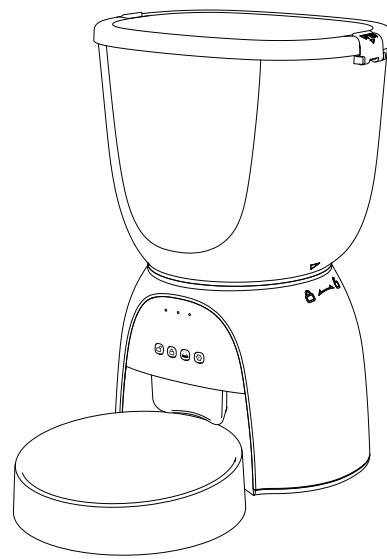
2.单页尺寸: 140x144mm, (七折页) 展开尺寸: 980x144mm

3.材质: 128G双铜, 双面彩色印刷

折页首页

Automatic Pet Feeder

User Manual WiFi Edition



Please read the instruction manual carefully before using the product

Safety Guide

- When children use this product, please use it under the accompaniment of their parents.
- Do not use the feeder for pets that cannot reach the food tray or have any physical disabilities.
- Do not immerse the main unit in water, as this will damage the control panel and other electronic components.
- Do not place any foreign objects in the pet feeder.
- Do not use canned or moist food.
- Do not disassemble the device by yourself.
- Do not modify the device.
- If the device fails or is damaged, do not try to repair the pet feeder by yourself, contact the dealer immediately and solve it.
- Always unplug the power plug when not in use and before cleaning.
- If the power plug of this device is damp, turn off the power to the socket. Do not try to unplug the power plug.

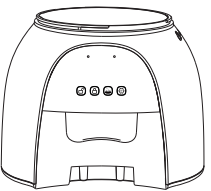
Notice

- Do not allow your pet to chew or swallow any part. If you are concerned about the power cord, purchase a wire conduit (hard plastic protector) at any hardware store to protect the power cord.
- Do not install or store the pet feeder in areas that are susceptible to weather conditions. The normal operating ambient temperature for this device is 0 ~ 40°C.
- Powered by alkaline D batteries. Do not use rechargeable batteries.
- Check the batteries regularly. Always replace with new batteries before leaving for a long time.
- Do not lift the pet feeder by the lid, food bucket or food tray. Lift and carry with both hands and the base while keeping the unit in an upright position.
- For dry food only, the size range is 3-10mm in diameter. Larger food may get stuck in the food outlet.
- Please read and comply with all important instructions listed on the device and packaging.

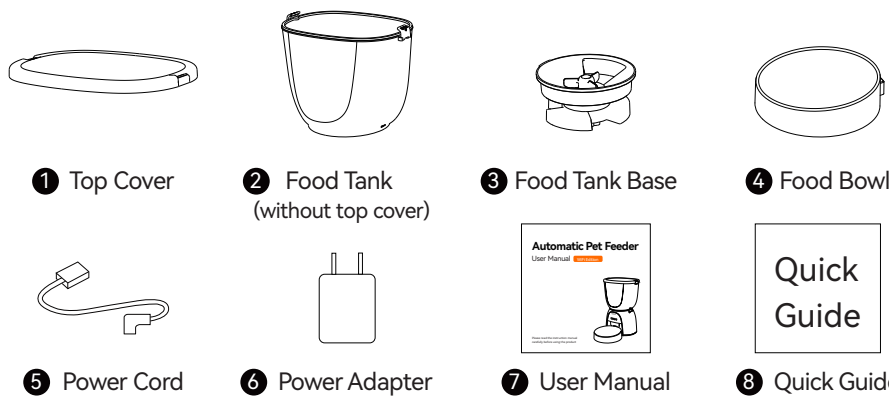
Packing List

After taking out the product, please confirm that the pet feeder and the accessories are complete or not.

Host



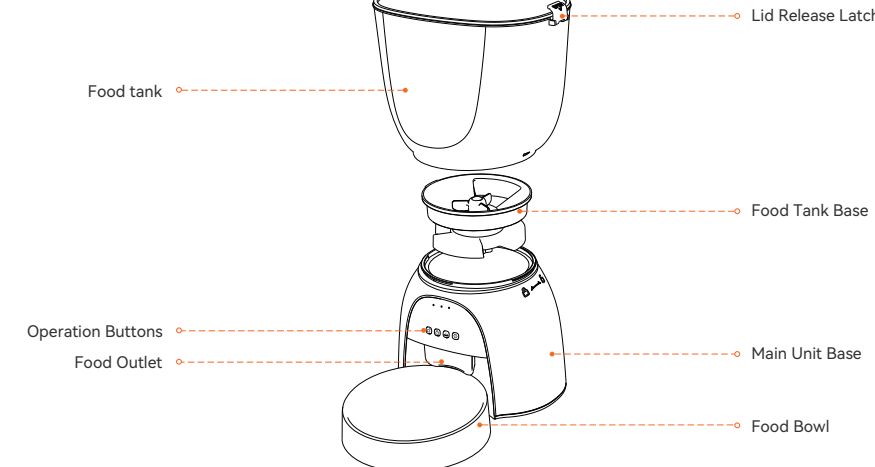
Accessories



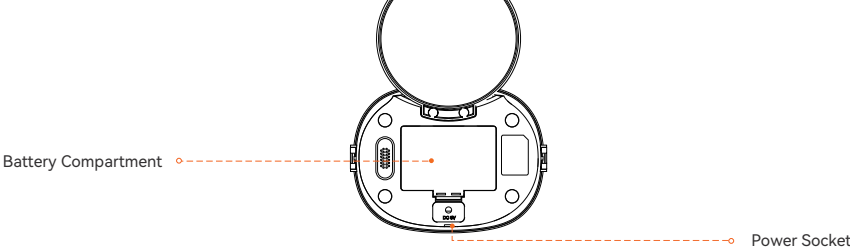
*In order to provide better products, we will regularly improve our products. If the product image is different from the actual product, please refer to the actual one.

Product Image

Exploded View



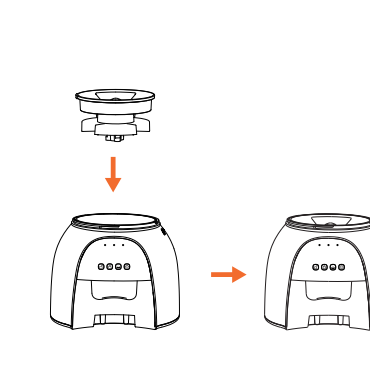
Bottom View



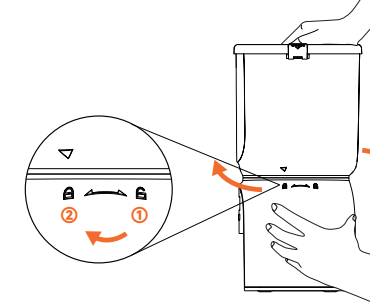
Assembly Sequence

1. Assemble the Food Tank Base

Please place the food tank base correctly into the main unit base as shown in the diagram.

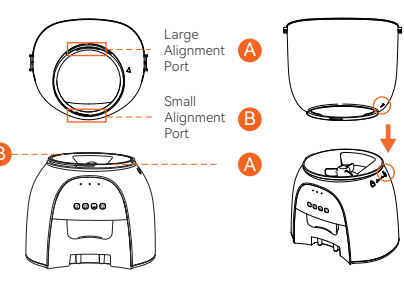


b) Rotate clockwise from ① to ② until tightened. After the operation, reconfirm that it is fastened and not loose.



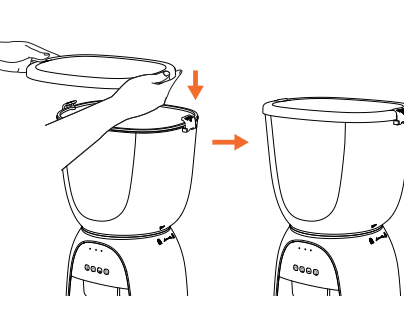
2. Assemble the Food Tank

a) Pay attention to the large (A) and small (B) alignment ports. Align the food tank with the corresponding numbered positions on the main unit as shown, with the ▼ at the bottom of the food tank housing aligned with the unlock symbol on the main unit base housing.

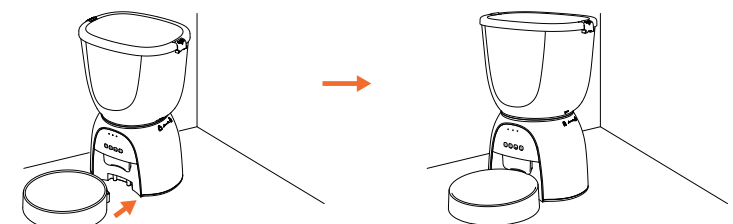


3. Install the Top Cover

Align both sides of the top cover with the food tank latches, and fasten both latches to complete.



4. Place the feeder base on a horizontal surface, with the food tray stuck on the base.



Buttons and Indicator Lights Description

- Unlock Button:** Long press for 6 seconds, a "beep" sound will be heard, the red indicator light will flash twice, and the buttons will be unlocked.
 - Lock Button:** Long press for 6 seconds, a "beep" sound will be heard, the red indicator light will flash twice, and the buttons will be locked.
 - Feed Button:** Short press once for a manual feeding.
 - Settings Button:** Long press for 6 seconds, three "beep beep beep" sounds will be heard, the red and blue lights will light up simultaneously for 6 seconds, the device will restore factory settings and enter network configuration mode (blue light flashing).
- *Note: Buttons can only be used in the unlocked state (except for the settings button).

Indicator Light Color	Indicator light signal	device status
Blue	Flashing	Network Configuration in Progress / Network Configuration Failed
Red	Flashing	Food Jam Reminder
Red and Blue	Solid for 6s	Factory Reset

Simple troubleshooting

Problem solution

Q: The App cannot connect to the device?

- A:
- 1) Long press "Ⓢ" for 6s, wait for the blue light to flash, and enter network configuration state.
 - 2) Ensure that Bluetooth and location services are enabled on your phone.
 - 3) Keep the device and phone within effective communication range, approximately 10 meters.
 - 4) Do not use Chinese characters for WiFi names and passwords, and keep them under 12 characters. Please use a combination of numbers and letters. 5G WiFi signals are not supported; please use 2.4G WiFi signals.

Q: The feeder does not feed accurately or does not feed?

- A:
- 1) Please check first if there is too much food in the food bowl, or if the food channel is blocked.
 - 2) Regularly clean the food outlet and food channel.
 - 3) If using battery power, please check if the batteries are dead.

Q: Device shows offline?

- A:
- 1) The device can only connect and update data within the effective range of the router.
 - 2) Please check if the device at home is more than 10 meters away from the router (effective range is about 10 meters); try to avoid walls in between, as signals will drop sharply through walls, leading to unstable connections and thus device offline status. Also, when the network is poor, the actual status of the device will have a delay.

Q: No response when turning on?

- A:
- 1) First check if the power is plugged in properly. If both are plugged in, please check if the power adapter and power cord are damaged. If damaged, contact customer service.

折页尾页

FCC WARNING

This device complies with part 15 of the FCC Rules. Operation is subject to the following two conditions: (1) this device may not cause harmful interference, and (2) this device must accept any interference received, including interference that may cause undesired operation. Any changes or modifications not expressly approved by the party responsible for compliance could void the user's authority to operate the equipment.

NOTE: This equipment has been tested and found to comply with the limits for a Class B digital device, pursuant to Part 15 of the FCC Rules. These limits are designed to provide reasonable protection against harmful interference in a residential installation. This equipment generates, uses and can radiate radio frequency energy and, if not installed and used in accordance with the instructions, may cause harmful interference to radio communications; however, there is no guarantee that interference will not occur in a particular installation. If this equipment does cause harmful interference to radio or television reception which can be determined by turning the equipment off and on, the user is encouraged to try to correct the interference by one or more of the following measures:

- Reorient or relocate the receiving antenna.
 - Increase the separation between the equipment and receiver.
 - Connect the equipment into an outlet on a circuit different from that to which the receiver is connected.
 - Consult the dealer or an experienced radio/TV technician for help.
- To maintain compliance with FCC's RF Exposure guidelines, this equipment should be installed and operated with minimum distance between 20cm the radiator your body. Use only the supplied antenna.

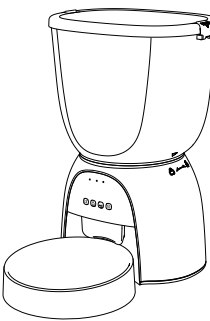
Specification

Food Tank Capacity: 4L
Power Supply: DC 5V/1A power adapter; 3pcs alkaline D batteries
Power Supply: AC100-240V input, DC5V output
Product Weight: 1.37±0.1kg
Size: 22.6*17*33.4cm
BE-061-D

Instructions

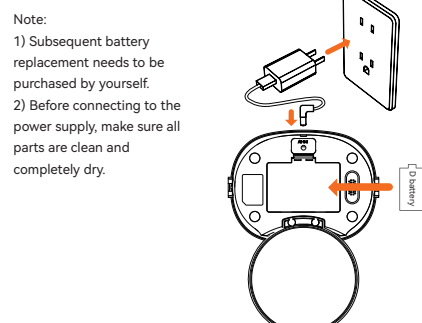
01 | Installation

Complete assembly in the order of installation.



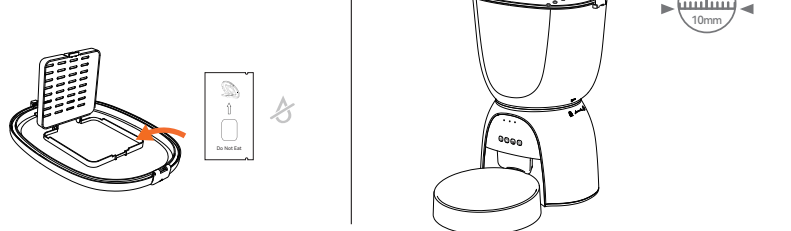
02 | Connect the power supply

1. Plug the 5V/1A power adapter into a wall socket and connect the device.
2. Open the battery compartment on the bottom of the unit and install 3 alkaline D size batteries (not required) in case of power failure.



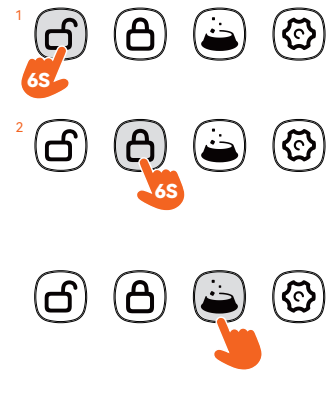
03 | Pouring pet food

1. Open the desiccant box on the top cover and place the desiccant inside.
2. Pour dry pet food into the food tank, close the food tank lid, and fasten the latches on both sides.



04 | Lock/Unlock

1. Long press "Ⓢ" for 6 seconds, a "beep" sound will be heard, the red indicator light will flash twice, and the device will lock.
2. Long press "Ⓢ" for 6 seconds, a "beep" sound will be heard, the red indicator light will flash twice, and the device will unlock.



05 | Feeding

Manual Feeding: Short press once to dispense 1 portion.

Note: Please unlock the device before feeding.

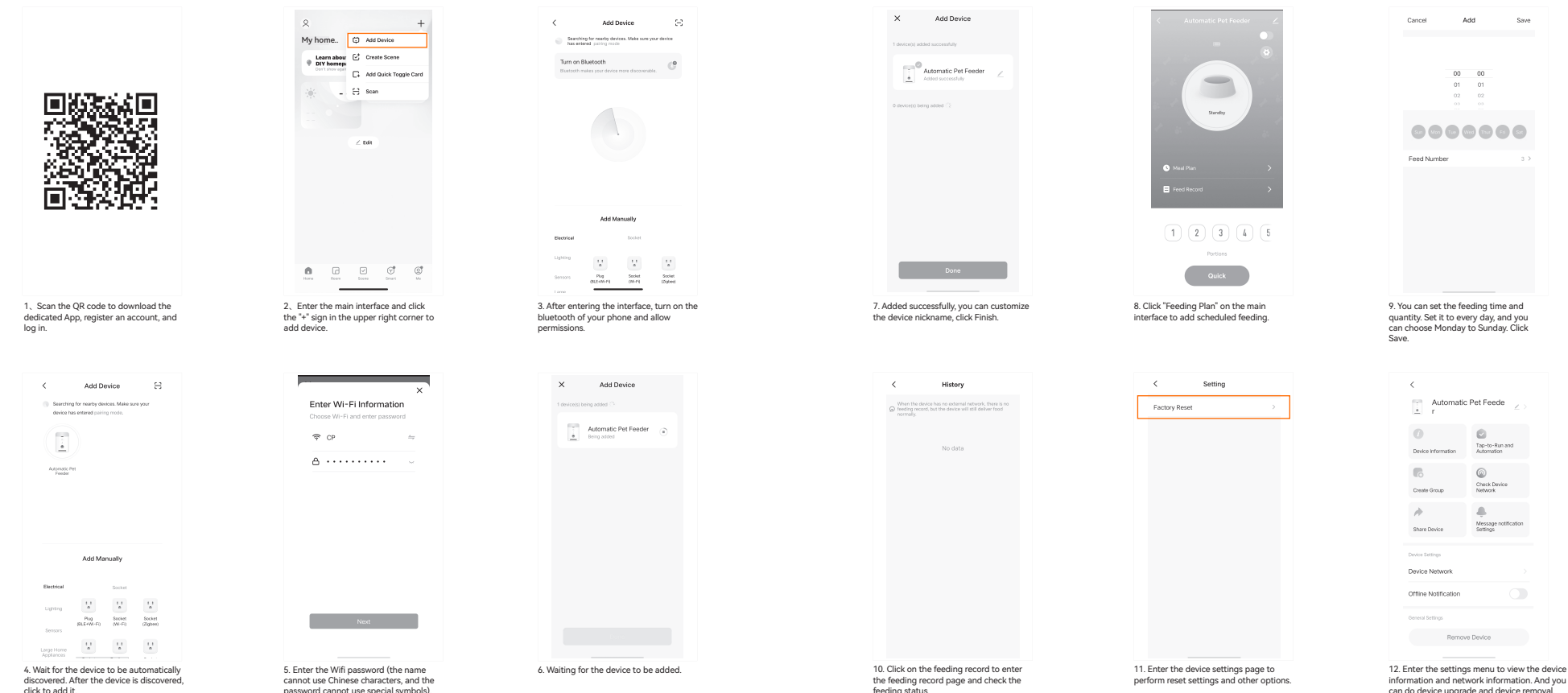
06 | Reset

1. Long press the "Ⓢ" button for 6 seconds, three "beep beep beep" sounds will be heard, the red and blue lights will light up simultaneously for 6 seconds, the device will restore factory settings, and all feeding plans, feeding records, and other data will be cleared.
2. After restoring factory settings, wait for the blue light to flash to enter WiFi fast network configuration mode, and you can reconfigure the network.
3. WiFi network configuration mode switching: Long press for 6 seconds to hear three "beep beep beep" sounds, then the red and blue lights will light up simultaneously for 6 seconds before switching to AP network configuration mode (blue light flashes slowly). Repeat this operation to switch network configuration modes.

07 | Fault Alarm

If the food dispensing structure gets stuck due to reasons such as oversized cat food, the device will issue a food jam warning. After the fault is cleared, the device can operate normally.

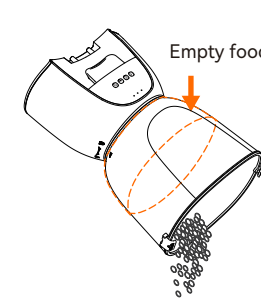
Smart Life Download Operation



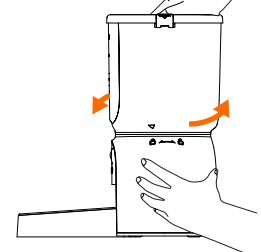
Cleaning Instructions

Clean the device following these steps:

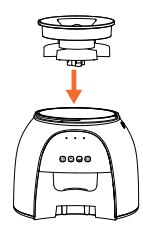
- (1) Remove the food tank lid, empty all food from the tank (essential).



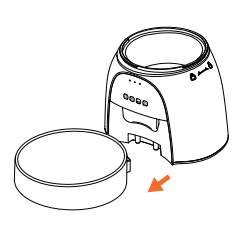
- (2) Remove the food tank; grasp the food tank with your hand, hold the base, rotate counter-clockwise, and remove the food tank.



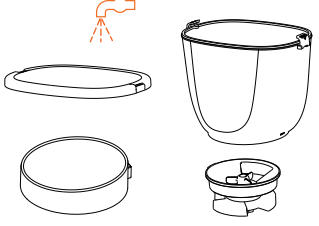
- (3) Remove the food tank base;



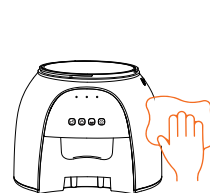
- (4) Empty the food from the food tray, remove the food tray;



- (5) Rinse with clean water or clean with food-grade detergent, and wipe dry or air dry.



- (6) The main unit can be wiped with a damp cloth, do not rinse with water.



- (7) Reassemble: After the device is dry, assemble the device according to the (Assembly Sequence).



- (8) Do not put the device in the dishwasher, otherwise it will be permanently damaged!

