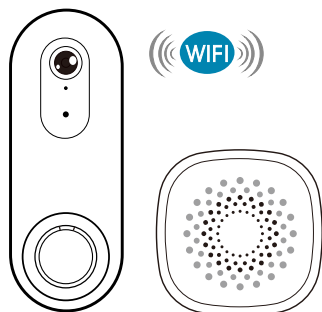


Smart Doorbell

USER MANUAL



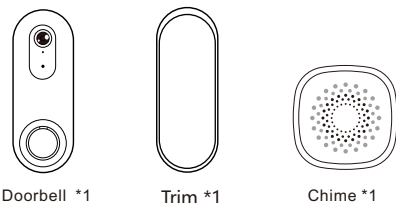
RL-AFH

Version 1.0

Features

- Easy setup.
- Battery powered.
- IP55 rating.
- 60° view angle.
- 850nm infrared light.
- 2.4GHz Wi-Fi connection, low power consumption.
- Visitor call push message.
- Simplex communication for video intercom.
- Snapshot and video recording.
- Low battery notification.
- Support 433MHz wireless door chime (receiver).

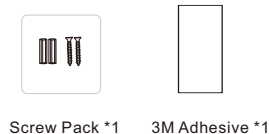
What's Included



Doorbell *1

Trim *1

Chime *1

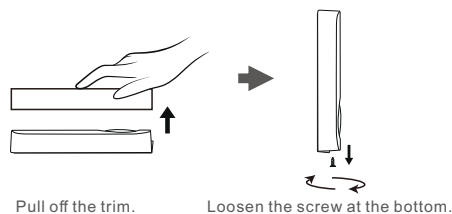


Screw Pack *1

3M Adhesive *1

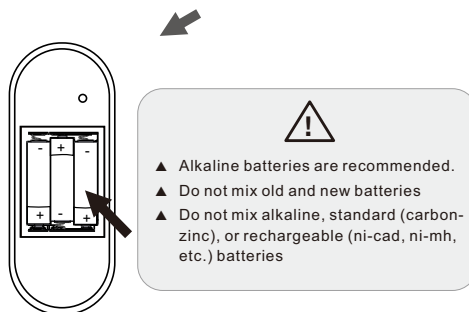
Installation

1. Open the back cover and then install batteries.



Pull off the trim.

Loosen the screw at the bottom.

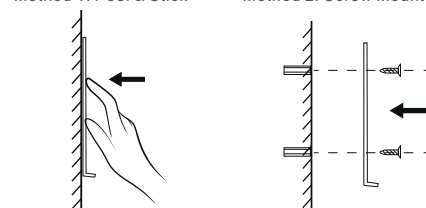


- ▲ Alkaline batteries are recommended.
- ▲ Do not mix old and new batteries
- ▲ Do not mix alkaline, standard (carbon-zinc), or rechargeable (ni-cad, ni-mh, etc.) batteries

2. Install the back plate. Support Peel & Stick and Screw Mount.

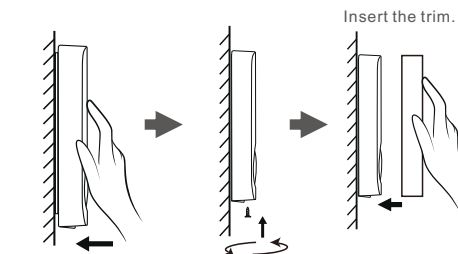
Method 1: Peel & Stick

Method 2: Screw Mount



Push hard for 30s to secure the adhesive

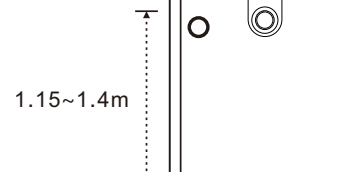
3. Install the doorbell.



Attach the doorbell onto the back plate.

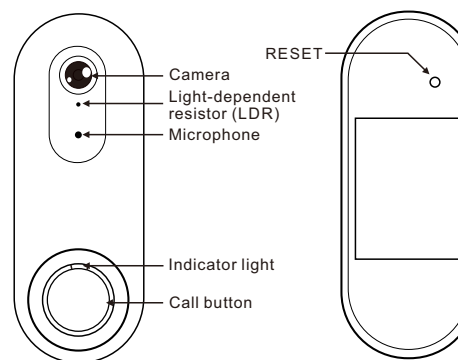
Secure with screw.

4. Install the doorbell 1.15m - 1.4m above the ground for the best photos.

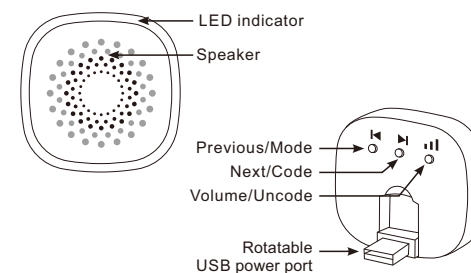


Function Keys

Doorbell



Chime



Function Description

1. Push Message

Your smart phone will receive a push message when the visitor presses the call button. Tap on the message to enter the video intercom page.

2. Video Intercom

On the video intercom page, tap and hold "Hold to Talk" button to talk with the visitor. To listen the doorbell, you should enable the speaker.

3. Share the Device

Enter the real-time monitoring page, tap Settings (at the upper right corner) >> Share Device >> Add >> Input the registered account that you want to share with.

4. Low Battery Notification

Your smart phone will receive a push message when battery level is low. Please replace the batteries in this case.

5. Notification Settings of Your Smart Phone

For your smart phone, go to Settings >> Notification & Status Bar >> App Notifications >> Tuya Smart App >> Slide on the options including Show Notifications, Floating Notifications, Lock Screen Notifications, Sound, and so on (NOTE: These options may vary slightly depending on the model of your smart phone).

6. Reset the Device

Open the back cover, use a needle to press the reset button for 3 seconds, when hearing a "Ding-Dong" tone, the reset is successful.

7. Doorbell Indicator Light

- Blinking: Waiting for network pairing.
- Steady ON: Working
- Steady OFF: Sleeping

Coding between Doorbell and Chime

• Coding

Hold "▶" button on the back of the chime for 3 seconds, it will sound "Ding-Dong" to indicate that it has entered coding mode. Now, press the call button on the doorbell, the door chime will sound the selected ringtone to indicate that the coding is successful (Only one doorbell can be coded each time, to code more, repeat the instruction. Up to 10 doorbells can be coded).

• Uncoding All Doorbells

Hold "⏏" button on the back of the chime for 5 seconds, it will sound "Ding-Dong, Ding-Dong" to indicate that it has cleared the code for all doorbells.

- The doorbell only supports 2.4GHz Wi-Fi. It does not support 5GHz Wi-Fi.
- Metal can cause weak Wi-Fi signal, therefore, keep the doorbell away from the metal.
- The doorbell must not be directly exposed to sunlight.
- The image quality may be interfered by strong electromagnetic signals, therefore, when using the product, avoid the electromagnetic sources such as motor and transformer and make sure the circumstance is barrier-free and no interference.
- Do not attempt to repair this product, please return to your retailer.
- Remove batteries if the product is not in use for a long time and dispose the batteries according to the local laws and regulations.
- Use a slightly damp soft cloth to clean the camera.

Door Chime Operation

1. Mode Selection

Hold "◀" button for 3 seconds to switch between 2 modes: Sound Only/Sound + Light.

2. Ringtone Selection

Press "◀" button or "▶" button to select the previous or the next ringtone. There are 60 ringtones available.

3. Volume Adjustment

Press "⏏" button to adjust the volume level. The level can be adjusted to Mute (with blinking light)/Low/Medium/High/Max.

NOTICES

- The doorbell features low power consumption, which means it will enter sleep mode when no one presses the call button.
- The notification setting options may slightly vary depending on the model of your smart phone.

Network Pairing

1. Scan the QR code below to download and then install it.



TuyaSmart

Android 5.0 / iOS 8.0 or higher

2. Register your Tuya account and log in.
3. Enable "Bluetooth" and "Location" features of your smart phone.
4. Press the call button of the doorbell, the indicator light will blink and the doorbell will enter into the network pairing mode.
5. Open the app, on the home page tap "+" at the upper right corner, app will automatically find the device. Once discovered, tap "Add".
6. Input the account name and password of your 2.4GHz Wi-Fi network, and then follow the on-screen instructions to complete.

Scan the QR code below for the app operation details.



Technical Specifications

Doorbell

Battery: DC4.5V AA/LR6*3
Standby Current: 17μA
Wireless Frequency: 2.4GHz + 433MHz
Wireless Distance: ≈80m(Open area)
Camera Viewing Angle: 60°
Camera Pixel: 0.3MP
Talk Volume: ≈80db
IP Rating: IP55
Operating Temperature: -10°C~50°C
Relative Humidity: 10%~90%(RH)
Outline Size: 136.3*54.3*29mm

Chime

Power: USB DC 5V 0.5A
Standby Current: <10mA
Working Current: { Max: <150mA
Average <100mA
Low: 62-68dB
Medium: 68-74dB
High: 74-80dB
Max: 80-90dB
Volume (30cm) {
Demodulation: OOK
Frequency: 433.92MHz±250KHz
Distance: ≈80m(Open Area)
Working Temperature: -10°C~50°C
Use Environment: Indoor

FCC Warnings

Warning: Changes or modifications to this unit not expressly approved by the party responsible for compliance could void the user's authority to operate the equipment.

This device complies with Part 15 of the FCC Rules. Operation is subject to the following two conditions:
(1) this device may not cause harmful interference, and
(2) this device must accept any interference received, including interference that may cause undesired operation.

Shielded cables must be used with this unit to ensure compliance with the Class B FCC limits.

NOTE: This equipment has been tested and found to comply with the limits for a Class B digital device, pursuant to Part 15 of the FCC Rules. These limits are designed to provide reasonable protection against harmful interference in a residential installation. This equipment generates, uses and can radiate radio frequency energy and, if not installed and used in accordance with the instructions, may cause harmful interference to radio communications. However, there is no guarantee that interference will not occur in a particular installation. If this equipment does cause harmful interference to radio or television reception, which can be determined by turning the equipment off and on, the user is encouraged to try to correct the interference by one or more of the following measures:

- Reorient or relocate the receiving antenna.
- Increase the separation between the equipment and receiver.
- Connect the equipment into an outlet on a circuit different from that to which the receiver is connected.
- Consult the dealer or an experienced radio/TV technician for help.

To maintain compliance with FCC's RF Exposure guidelines, This equipment should be installed and operated with minimum distance between 20cm the radiator your body: Use only the supplied antenna.



NOTICE:

This manual is for the purpose of product use and operation. Design and specifications are subject to change without notice.