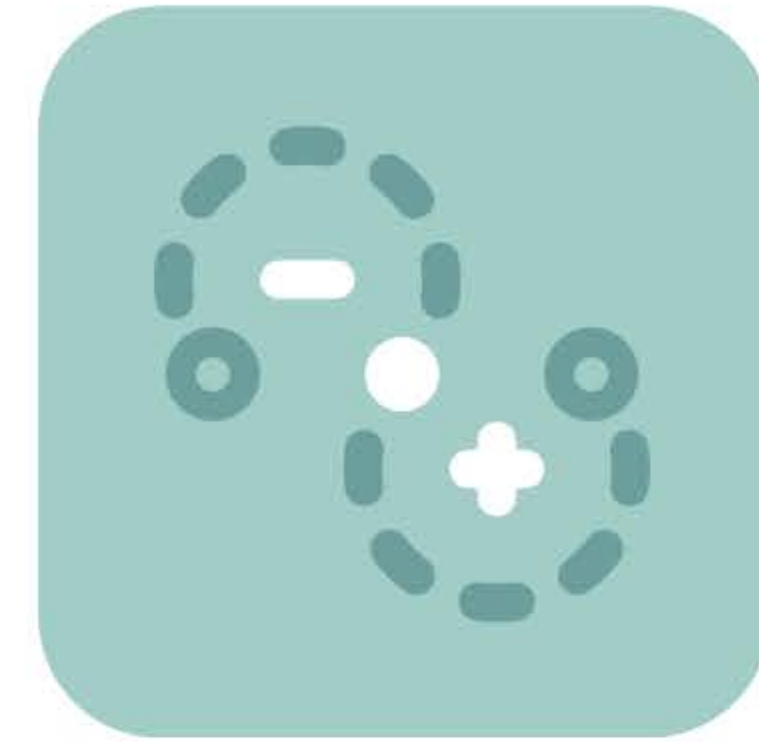


# APP Operation Manual



Aroma-Link

## APP Operations and settings

### I 、Download Aroma-link

1.Please enter the App store, Google play or Android App store to search Aroma-link,then download the App



iOS



Android

### II 、Register the account

1.Open the App Aroma-link, enter the login interface (As shown in the Figure1).  
2.Account registration is required for the first use of the APP, Click the [Register] button below to register an account (As shown in the Figure1).  
3.Fill in the account, email, password and other information, and click [register] after completing, APP will send an activation email to the registered mailbox, please activate the account in the email (As shown in the Figure2).

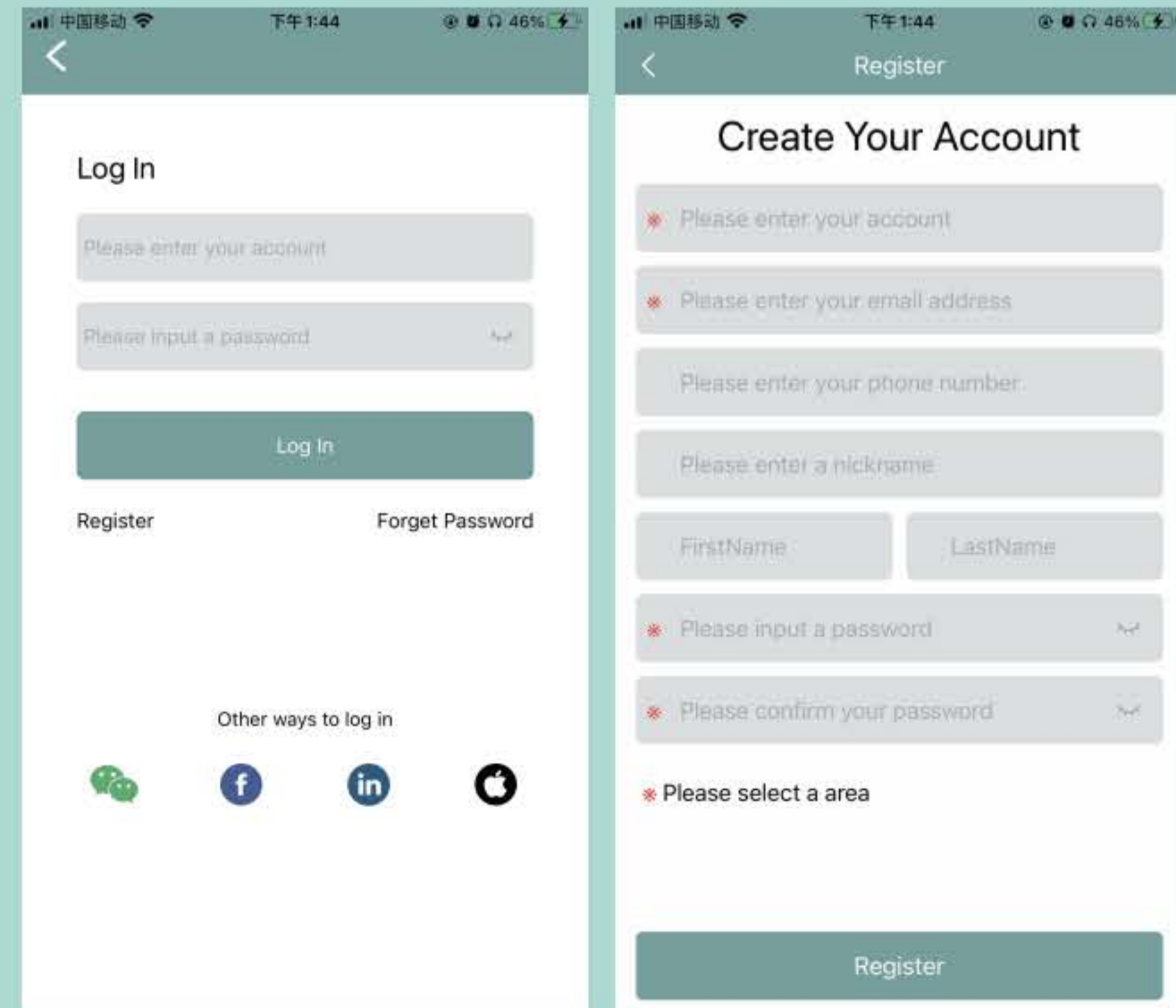


Figure1

Figure2

4.After the APP sends the email, click [Confirm] and in the received registration email [click to activate] (As shown in the Figure3).

### III 、Bluetooth Control

1.Click 【Bluetooth】 (As shown in the Figure4).  
The APP automatically searches for nearby devices and click on the the device name to connect, The default initial password is:" 1234 " (As shown in the Figure5).

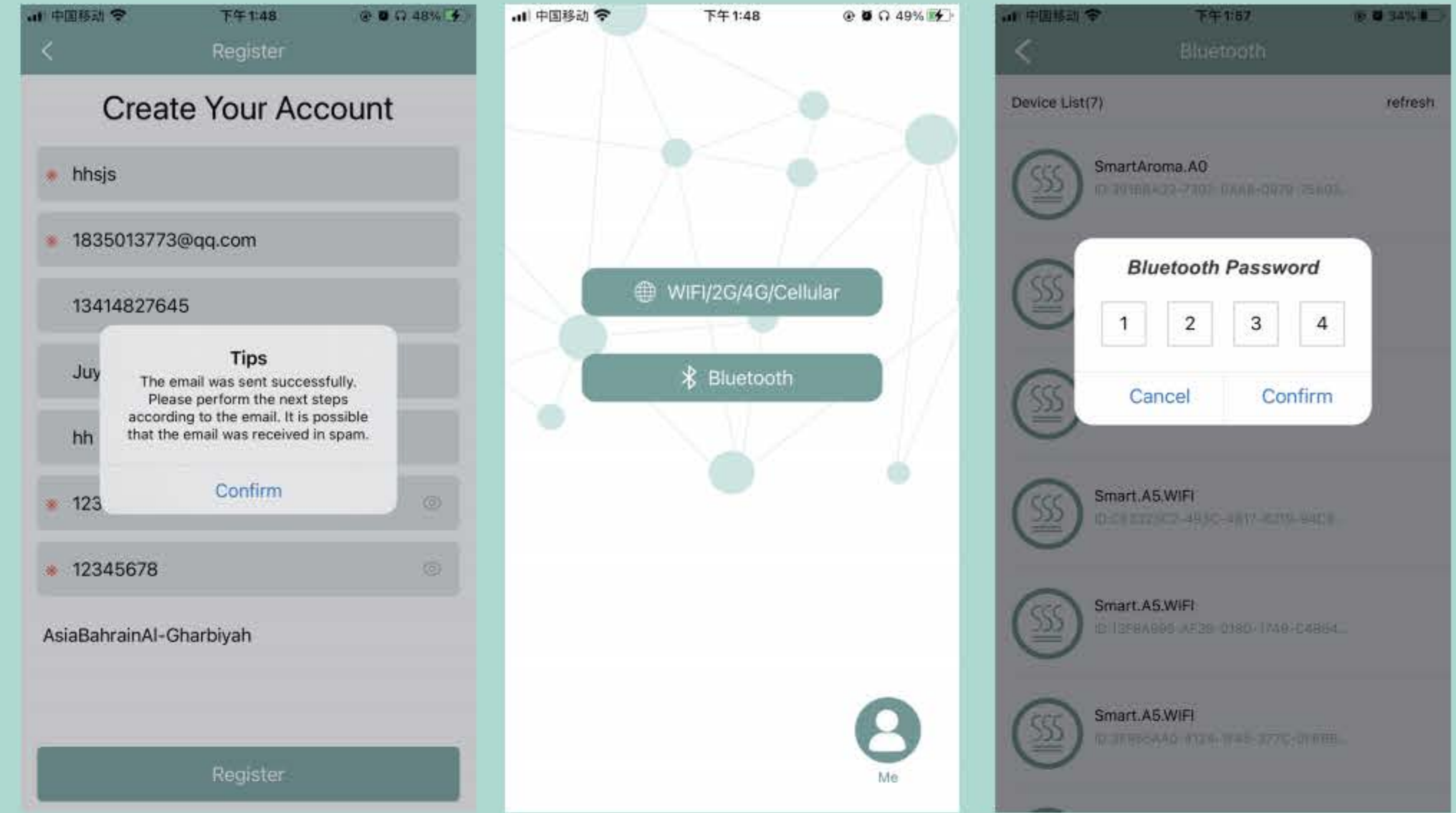


Figure3

Figure4

Figure5

3.The control interface is shown below:

(1) On/Off : Click [ON/OFF] to turn on or off machine (As shown in the Figure6).  
(2) Fan: Click [fan] to open or close fan (as shown in Figure6).  
(3) Set the working time period and working frequency: click [Set] to set the working time period and working frequency (as shown in Figure 7/8).

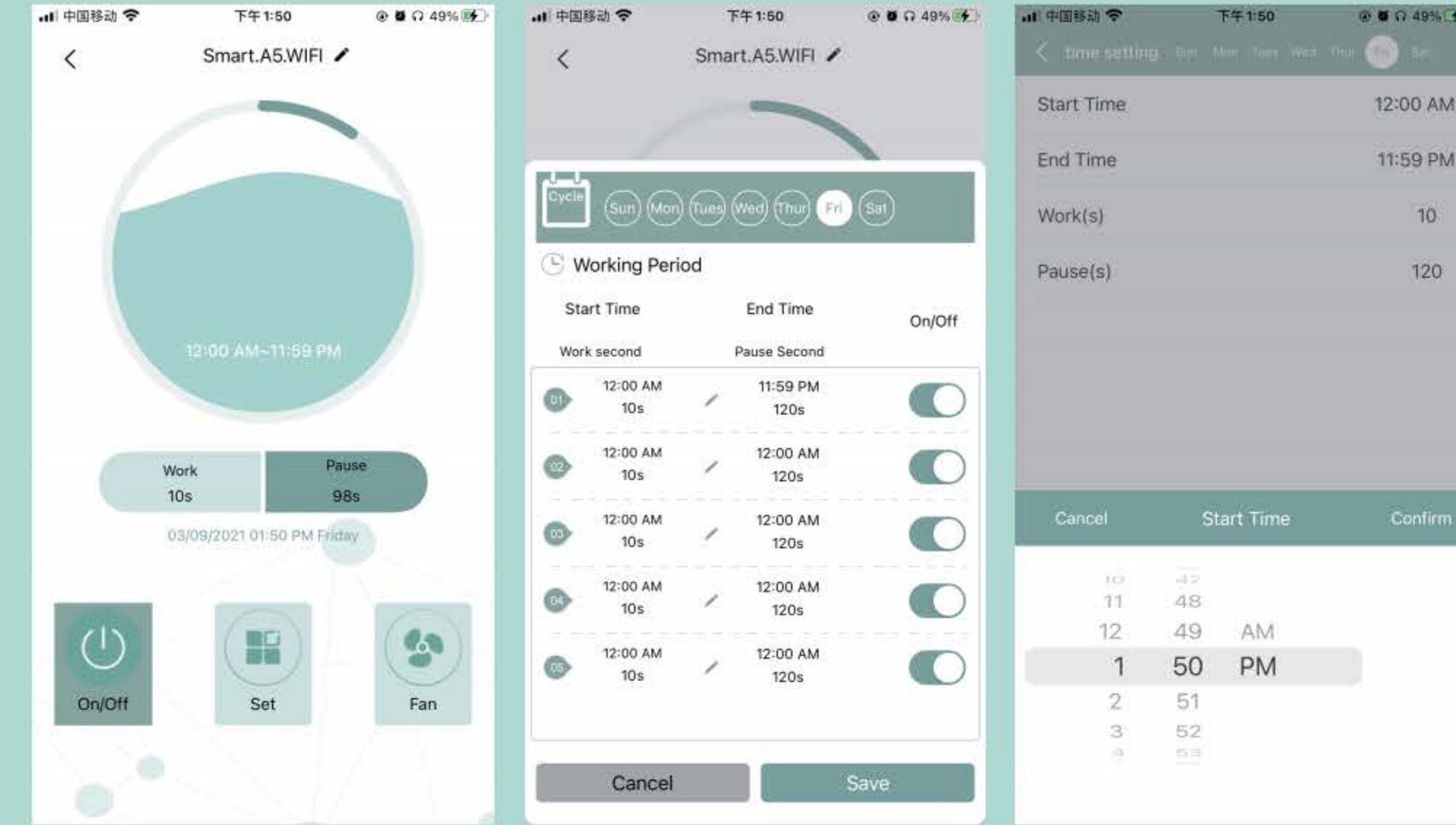


Figure6

Figure7

Figure8

### IV 、 Network control (Note: This function apply to models with WIFI/2G/4G/cellular)

1.Click 【WIFI/2G/4G/Cellular】 (as shown in Figure9).  
2.Click 【Add device】 (as shown in Figure10).  
3.Choose add mode according to device type (as shown in Figure11).

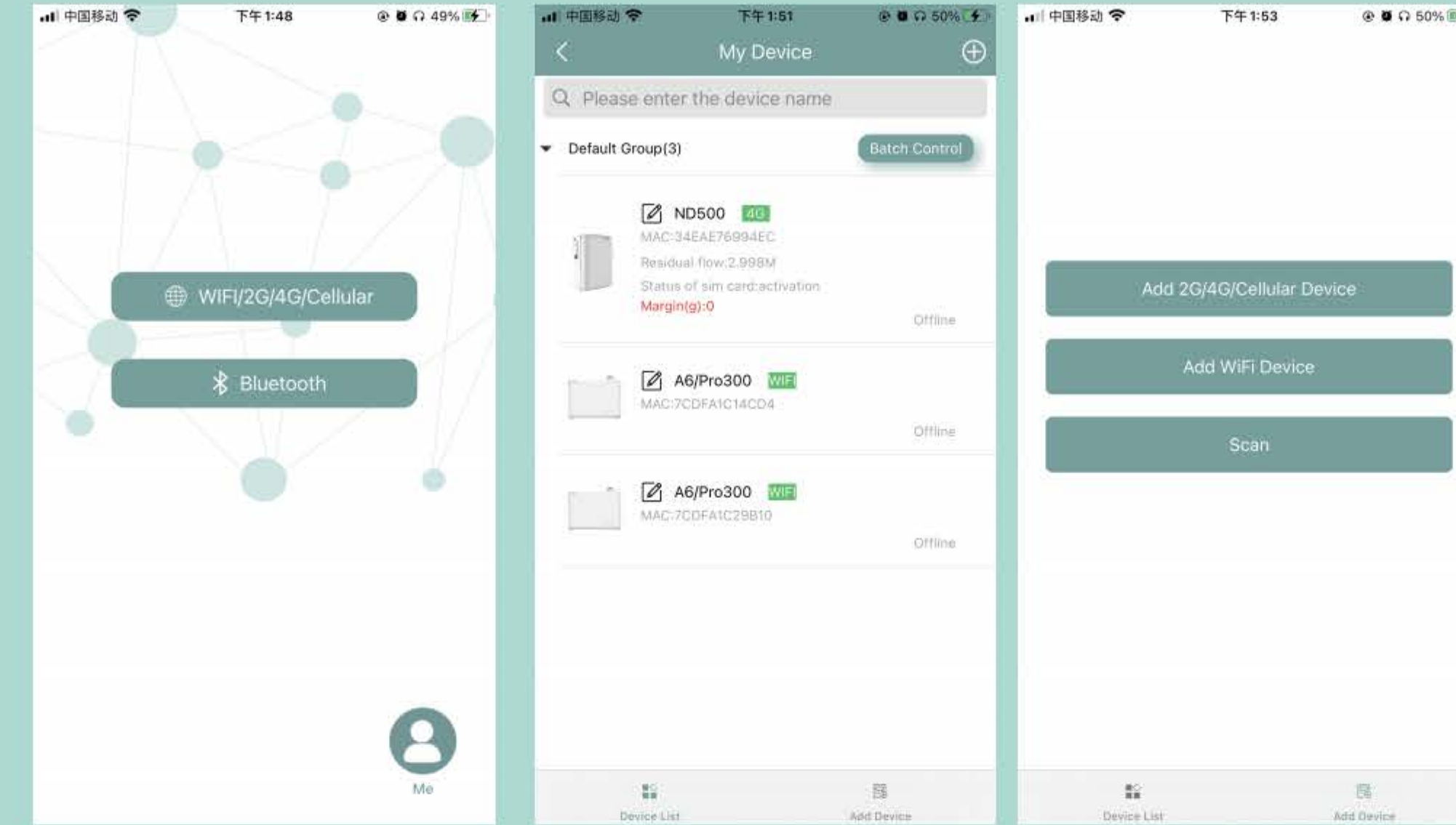


Figure9

Figure10

Figure11

4. 【Add 2G/4G/cellular device】 (As shown in the Figure12/13).  
5. 【Add WIFI device 】 (As shown in the Figure14/15/16).

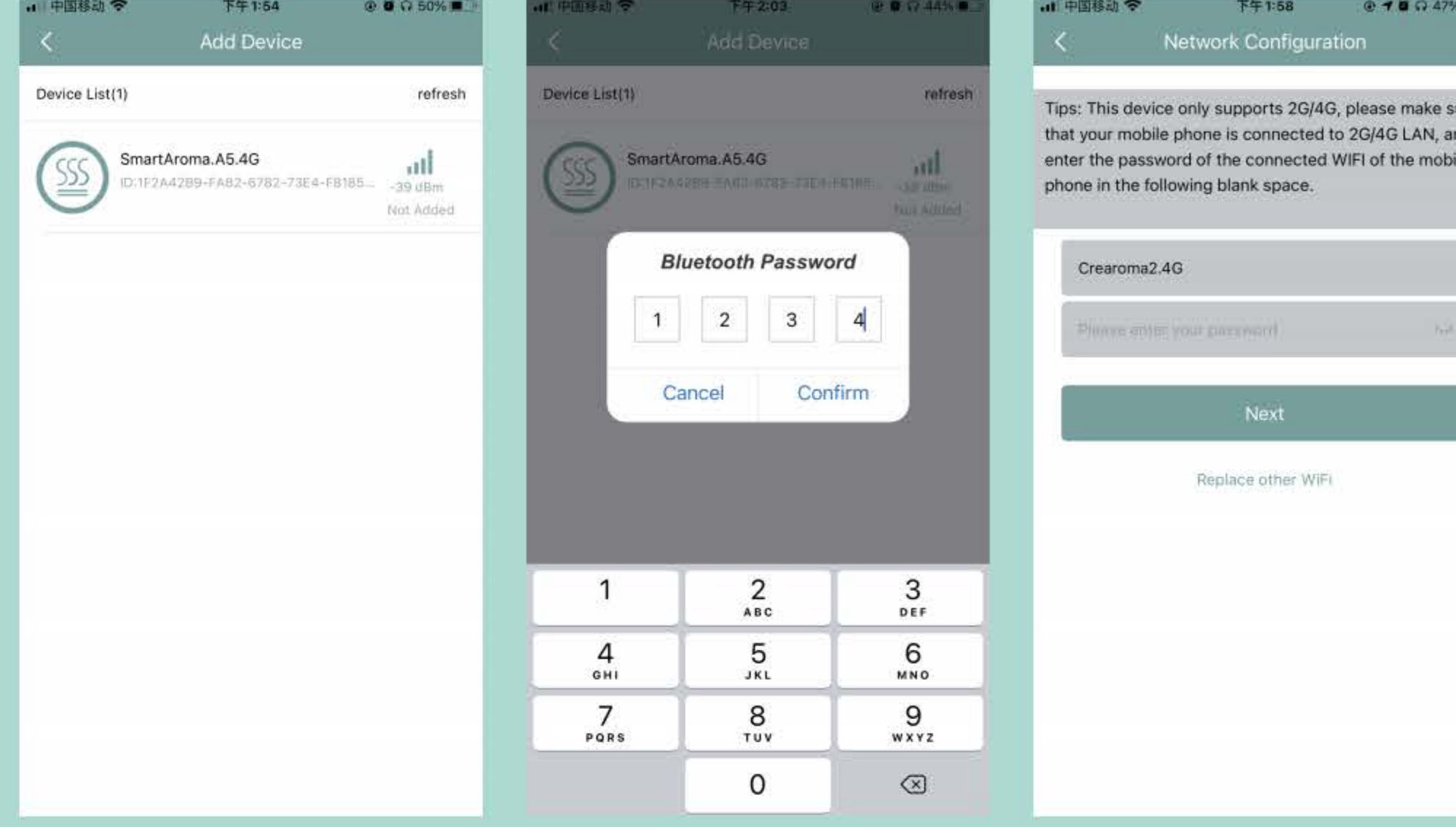


Figure12

Figure13

Figure14

### V 、grouping and group control

1.Group management (As shown in the Figure 17).  
2.Set new group (As shown in the Figure 18).  
3.Group control (As shown in the Figure 19).

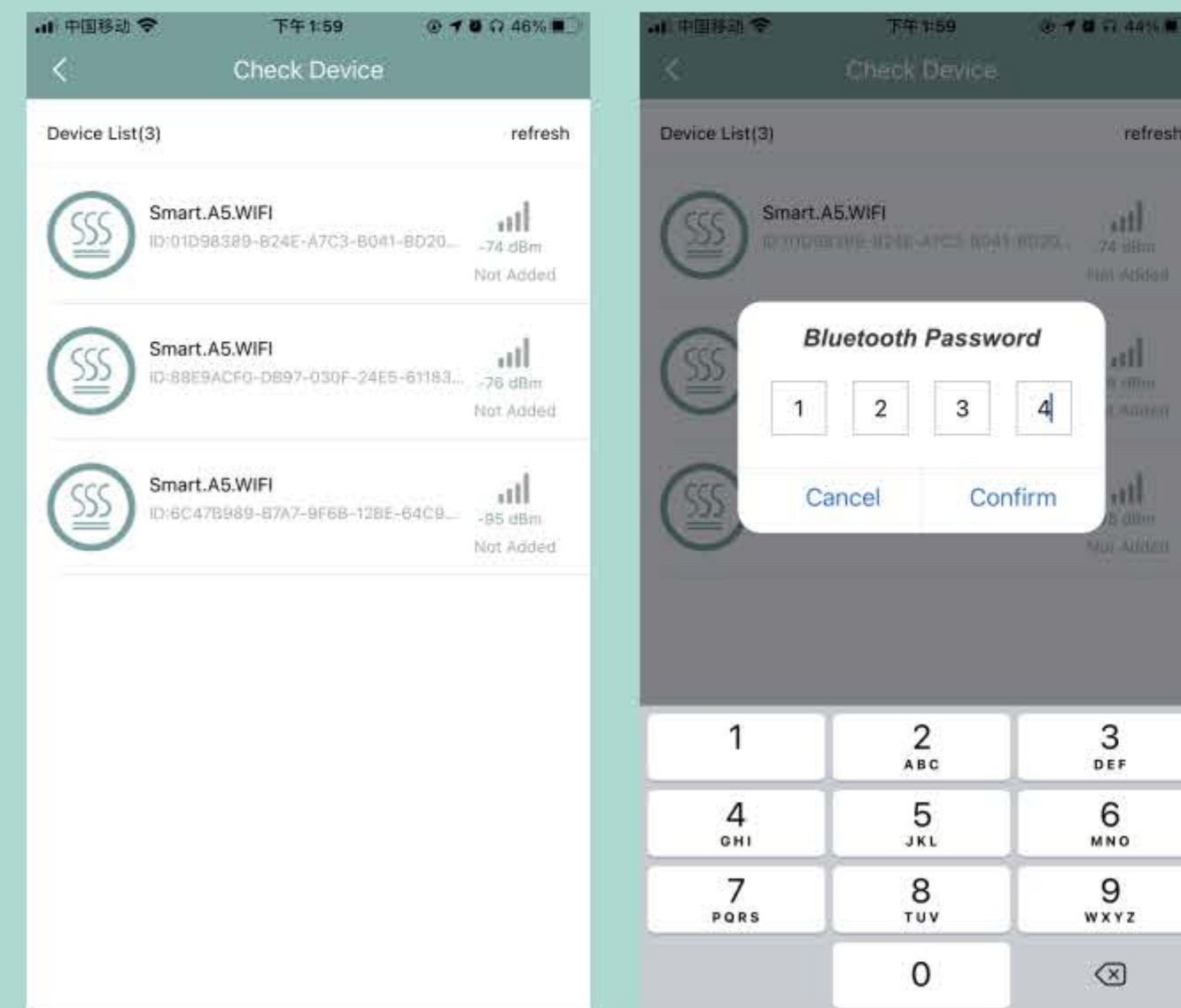


Figure15

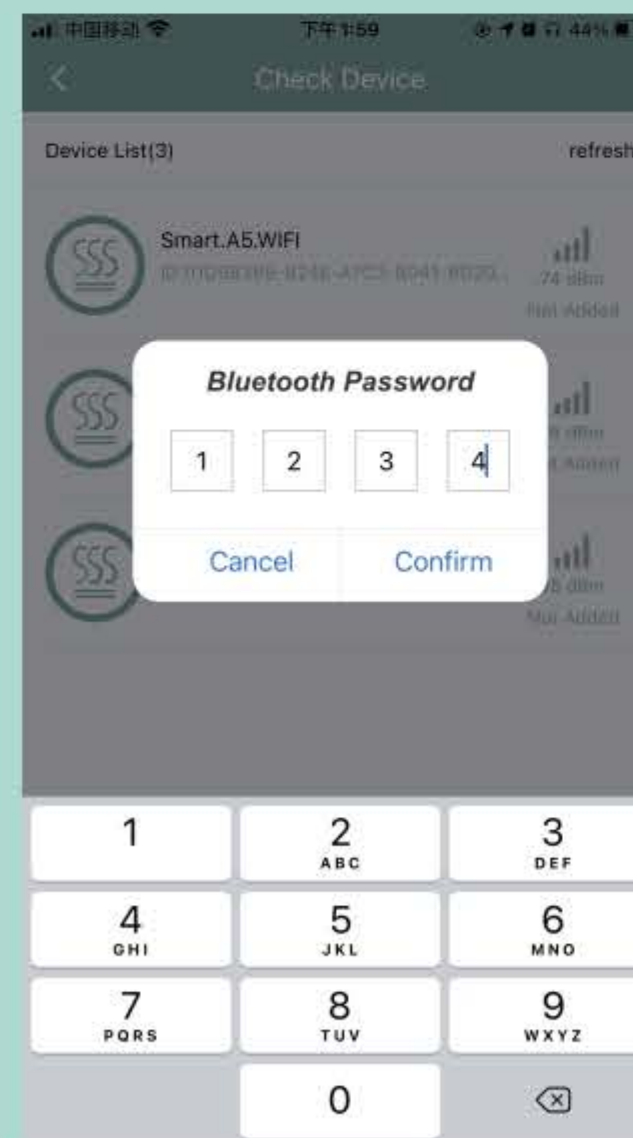


Figure16



Figure17

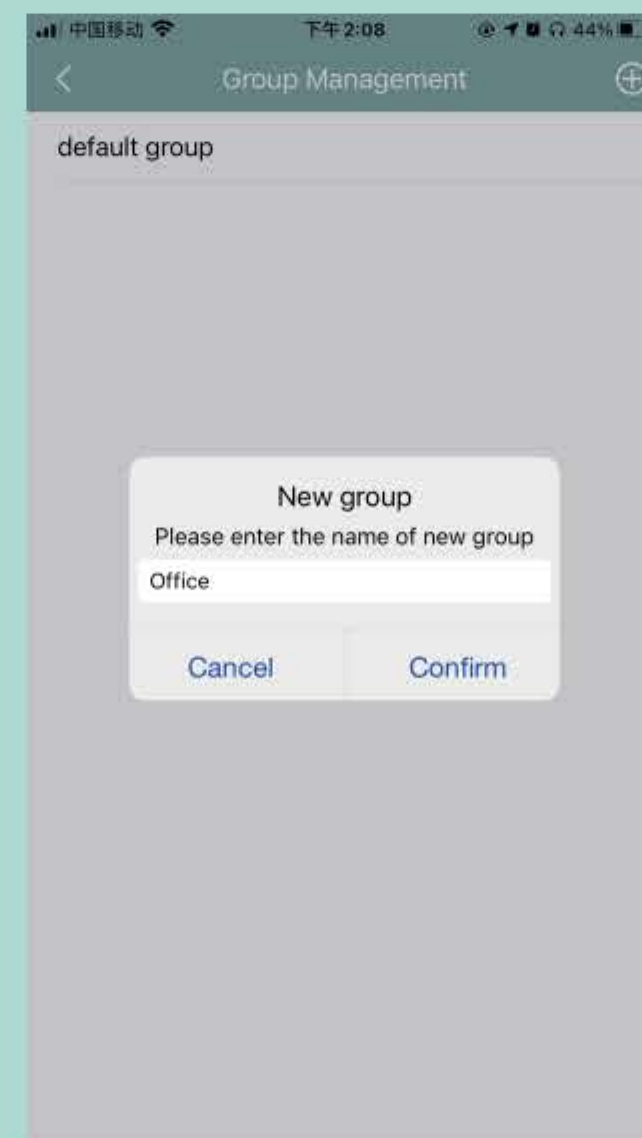


Figure18

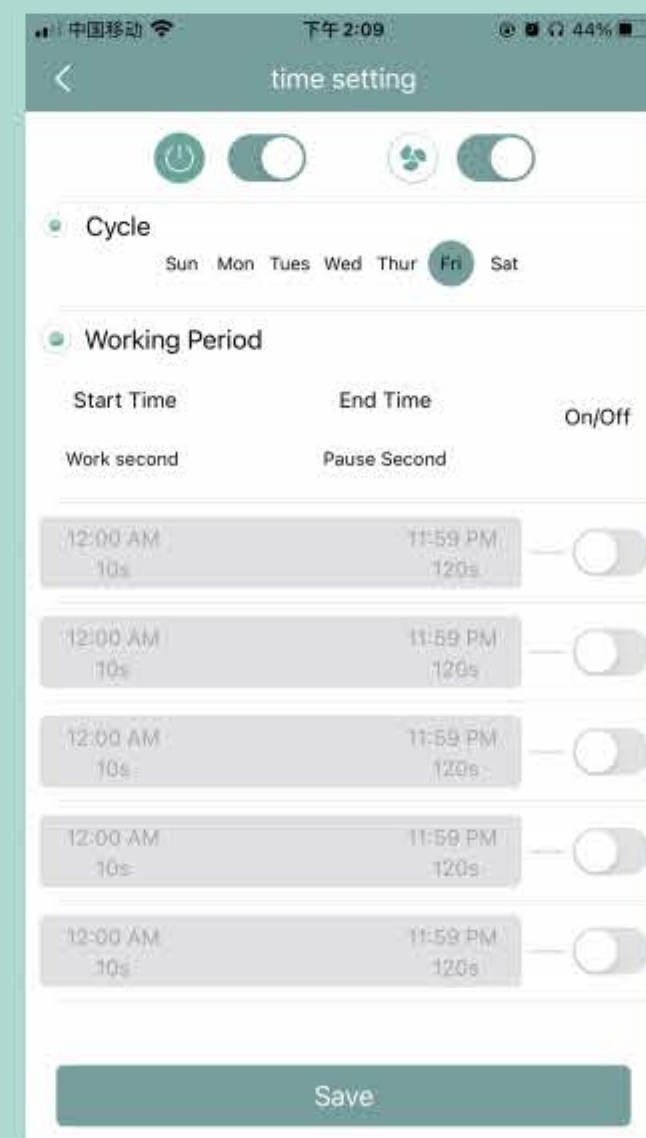


Figure19

### VI 、 Other operations

1. Click on " " pop up Move group/Rename/Qr code sharing/Remove device (As shown in the Figure 20).  
2. Click on " " pop up Rename group/New sub group/Delete group (As shown in the Figure 21).

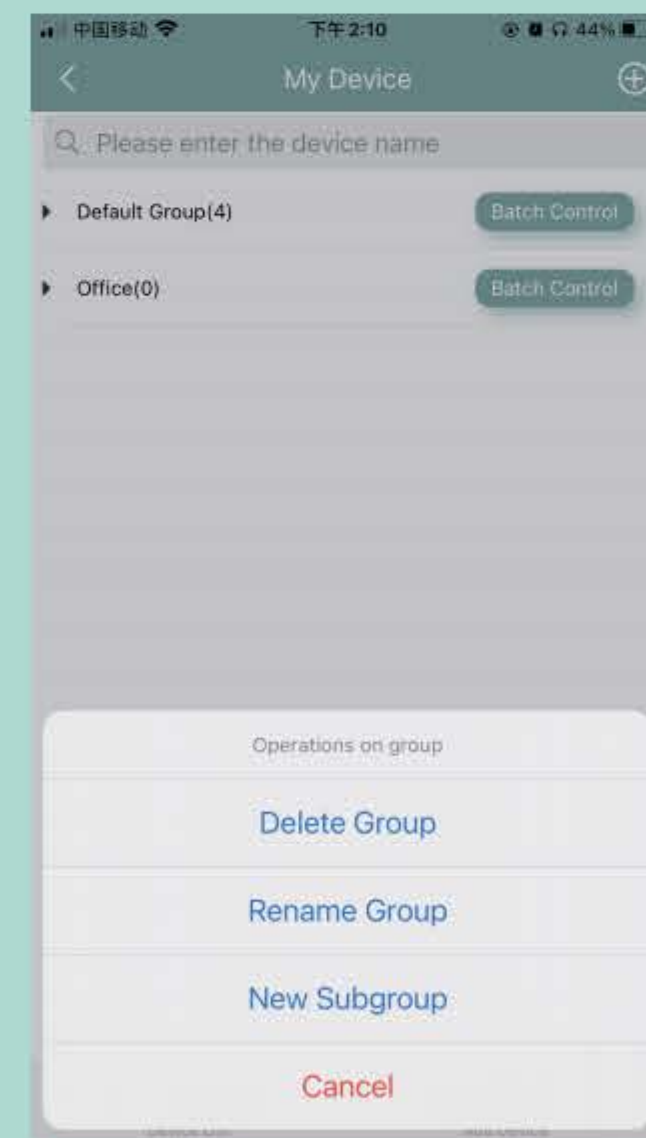


Figure20

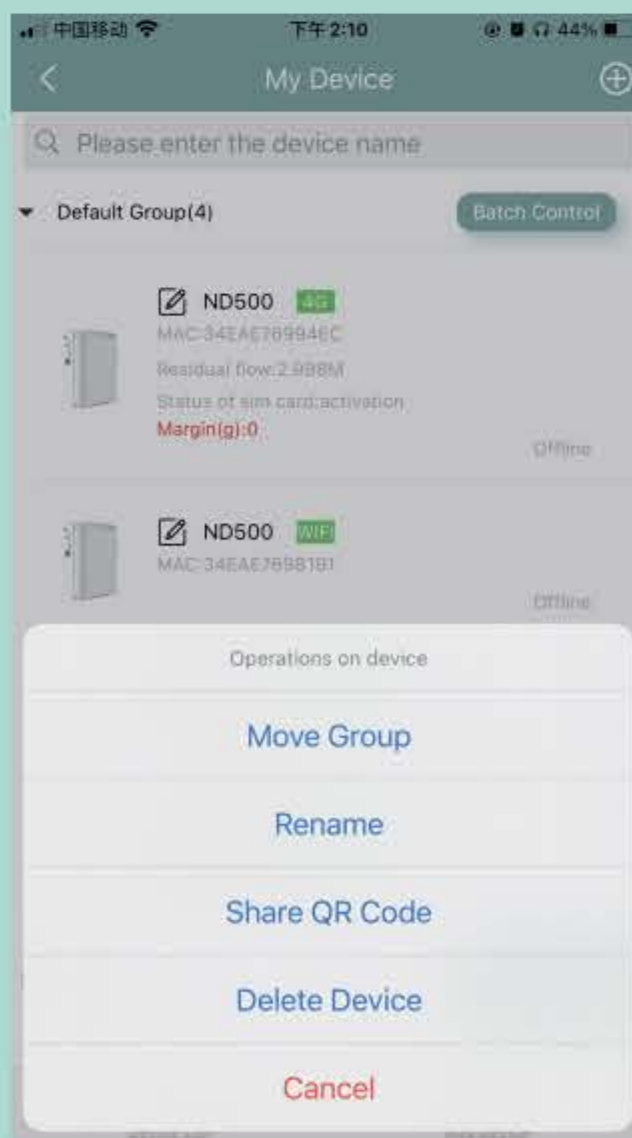


Figure21

### VII 、 Seven, this operation is only available in the 2G 4G version [wifi + bluetooth version does not have this function]

4.Weighing set (As shown in the Figure 22).  
5.Fragrance oil reserve display (As shown in the Figure 23).  
6.After-sale service (As shown in the Figure 24).

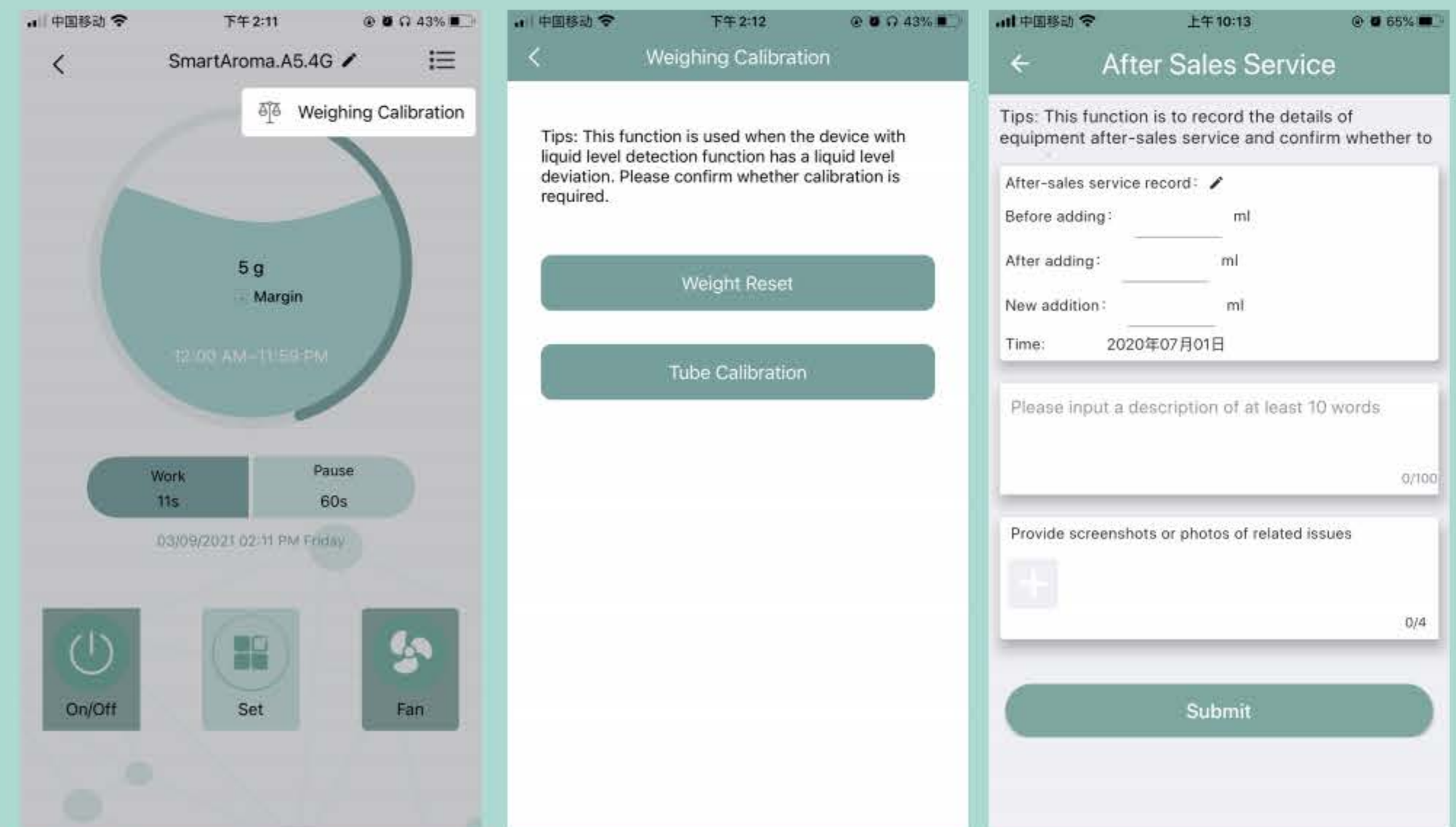


Figure22

Figure23

Figure24

### VII 、 SIM flow query and top up [only for 2G/4G version]

1.Click the device list, then you can check the SIM flow query and statues(As shown in Figure25).  
2.Click the "+" in the upper right corner, then chose "Top Up" (As shown in Figure25).  
3.Select the device that needs to be top-up (As shown in Figure26).  
4.Click the "Top up"button (As shown in Figure26).

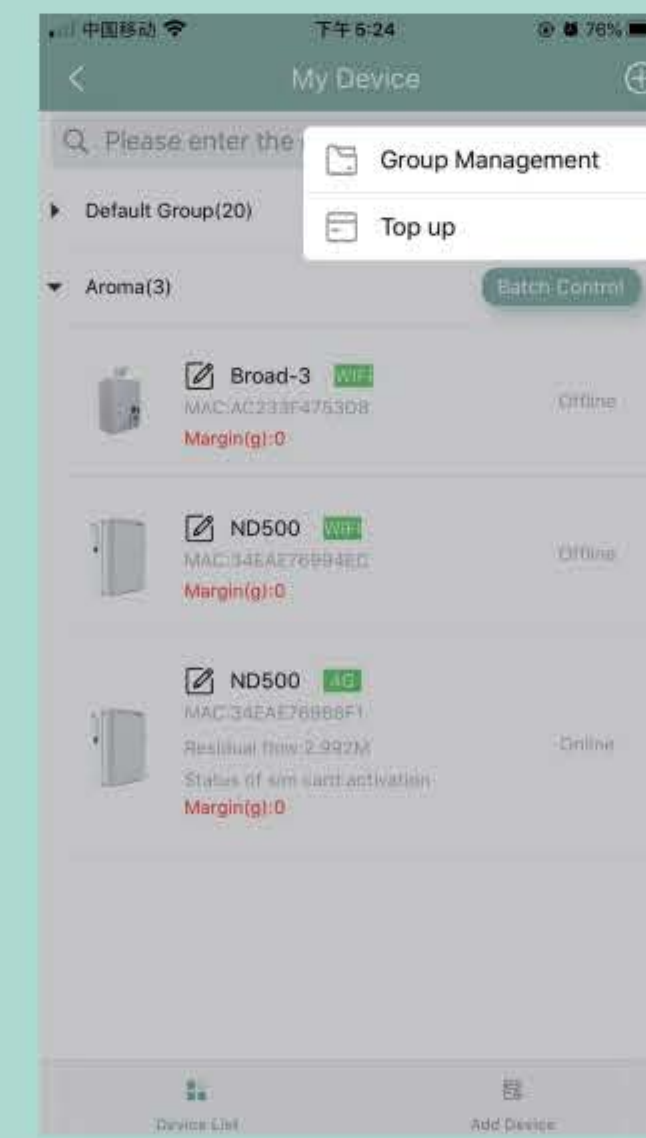


Figure25

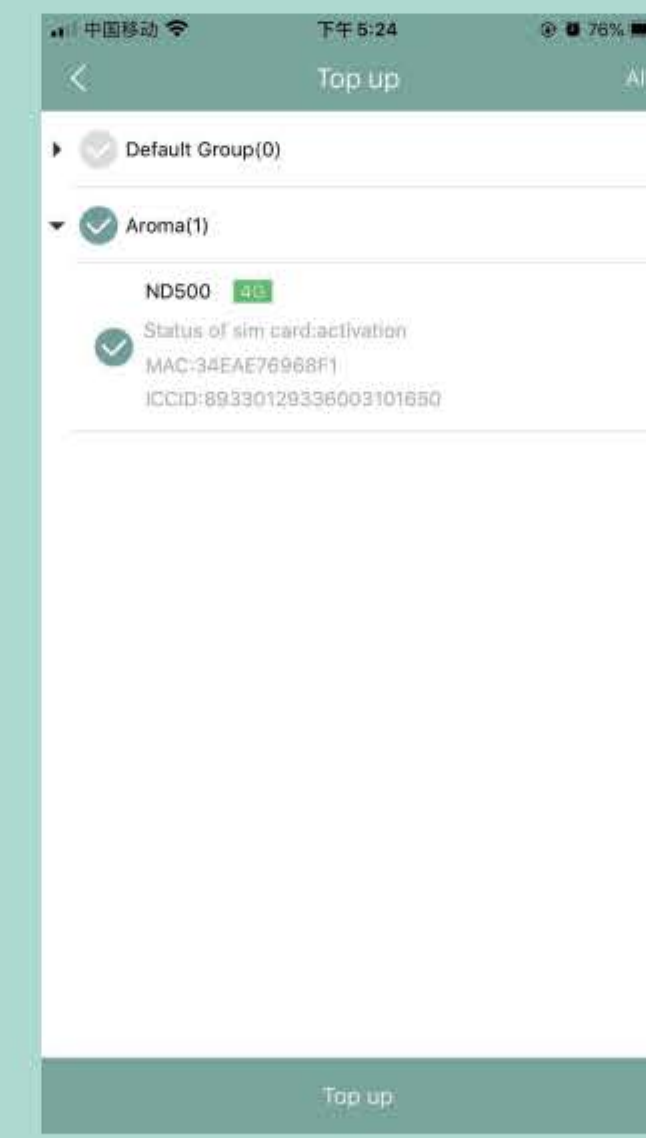


Figure26

5.Select the data package then click " Pay"to confirm recharge information and do next step (As shown in Figure27).  
6.Enter the Paypal payment page,Please follow the prompts to complete the payment(As shown in Figure28).

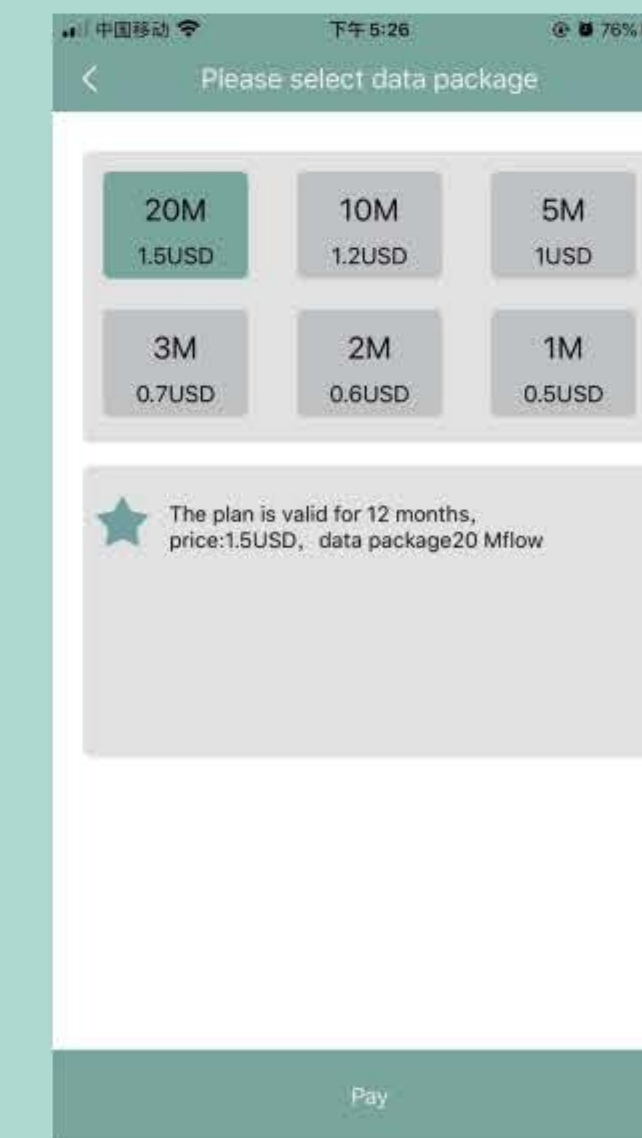


Figure27

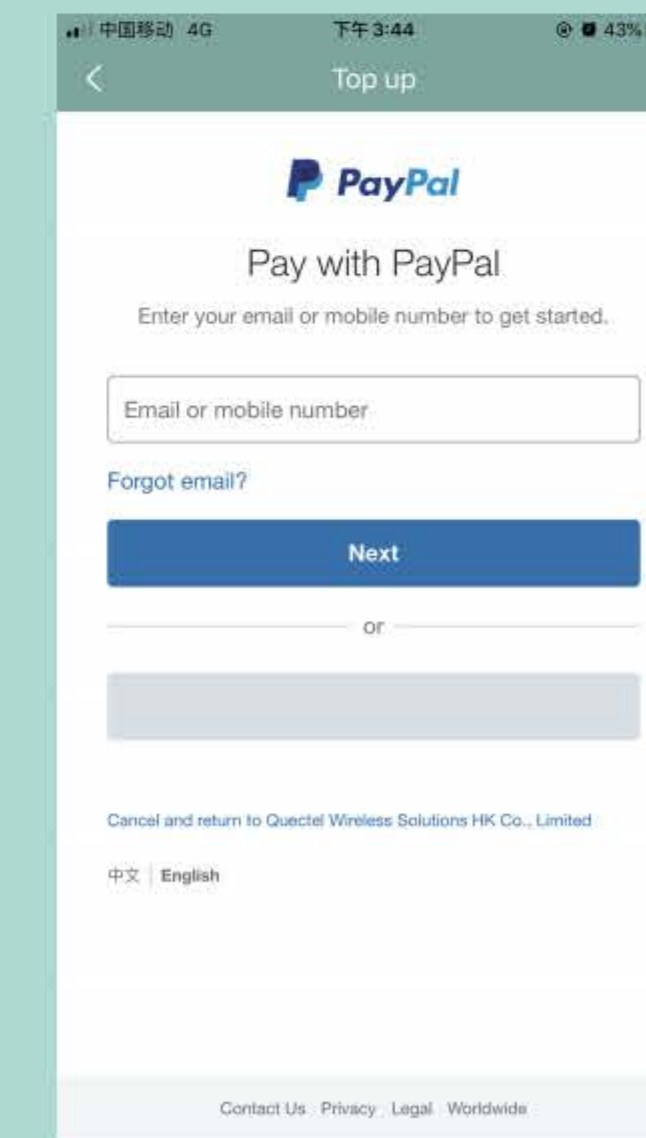


Figure28



FCC Warning:

This equipment has been tested and found to comply with the limits for a Class B digital device, pursuant

to part 15 of the FCC Rules. These limits are designed to provide reasonable protection against harmful interference in a residential installation. This equipment generates, uses and can radiate radio frequency energy and, if not installed and used in accordance with the instructions, may cause harmful interference to radio communications. However, there is no guarantee that interference will not occur in a particular installation. If this equipment does cause harmful interference to radio or television reception, which can be determined by turning the equipment off and on, the user is encouraged to try to correct the interference by one or more of the following measures:

- Reorient or relocate the receiving antenna.
- Increase the separation between the equipment and receiver.
- Connect the equipment into an outlet on a circuit different from that to which the receiver is connected.
- Consult the dealer or an experienced radio/TV technician for help.

Caution: Any changes or modifications to this device not explicitly approved by manufacturer could void your authority to operate this equipment.

This device complies with part 15 of the FCC Rules. Operation is subject to the following two conditions:

(1) This device may not cause harmful interference, and (2) this device must accept any interference received, including interference that may cause undesired operation.

This equipment complies with FCC radiation exposure limits set forth for an uncontrolled environment. This equipment should be installed and operated with minimum distance 20cm between the radiator and your body.