

## Internal photos

Photo 1

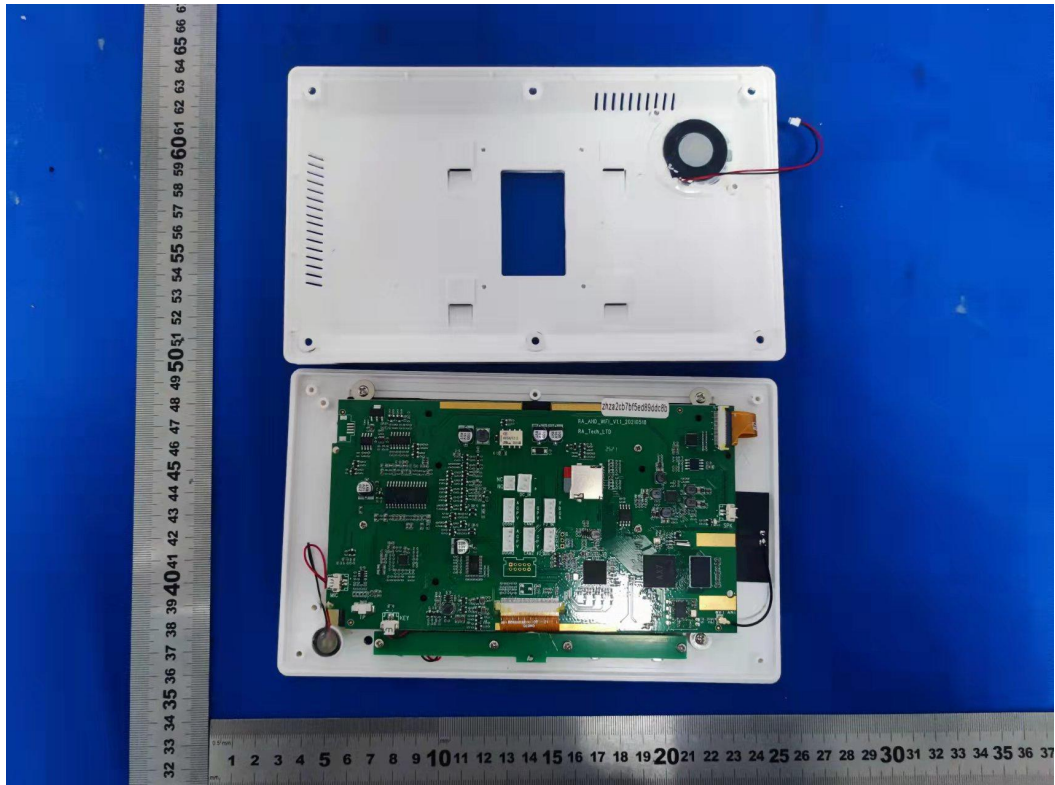


Photo 2



FPC ANTENNA

Photo 3

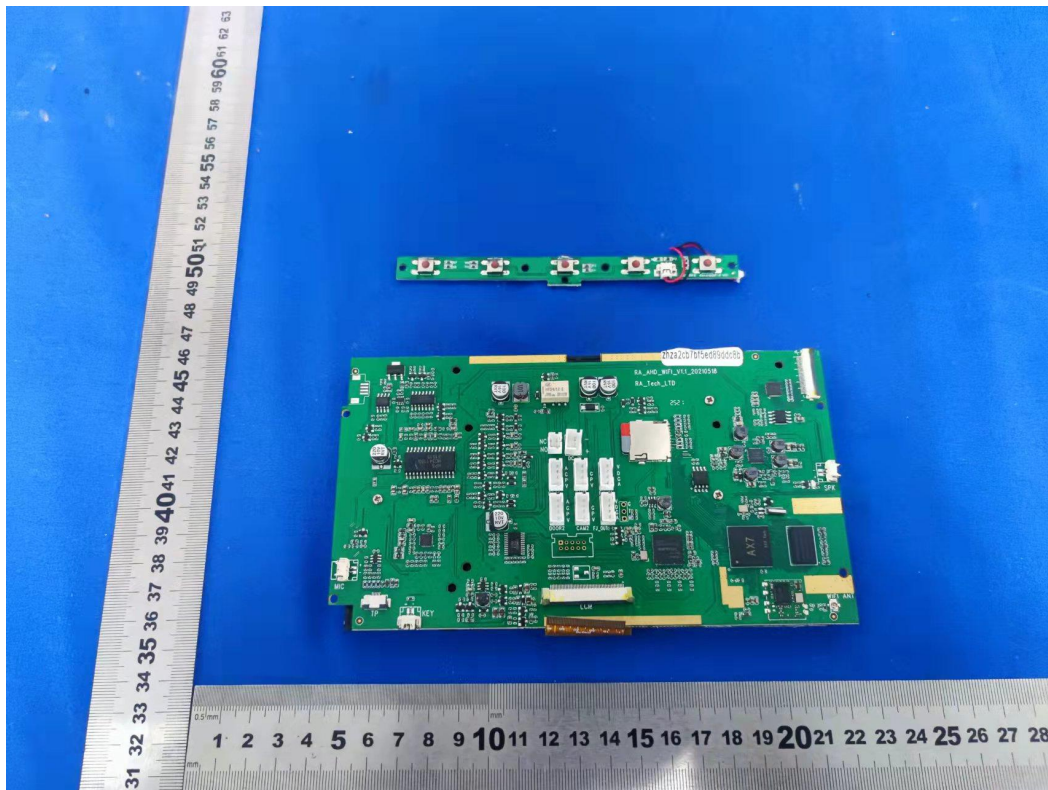
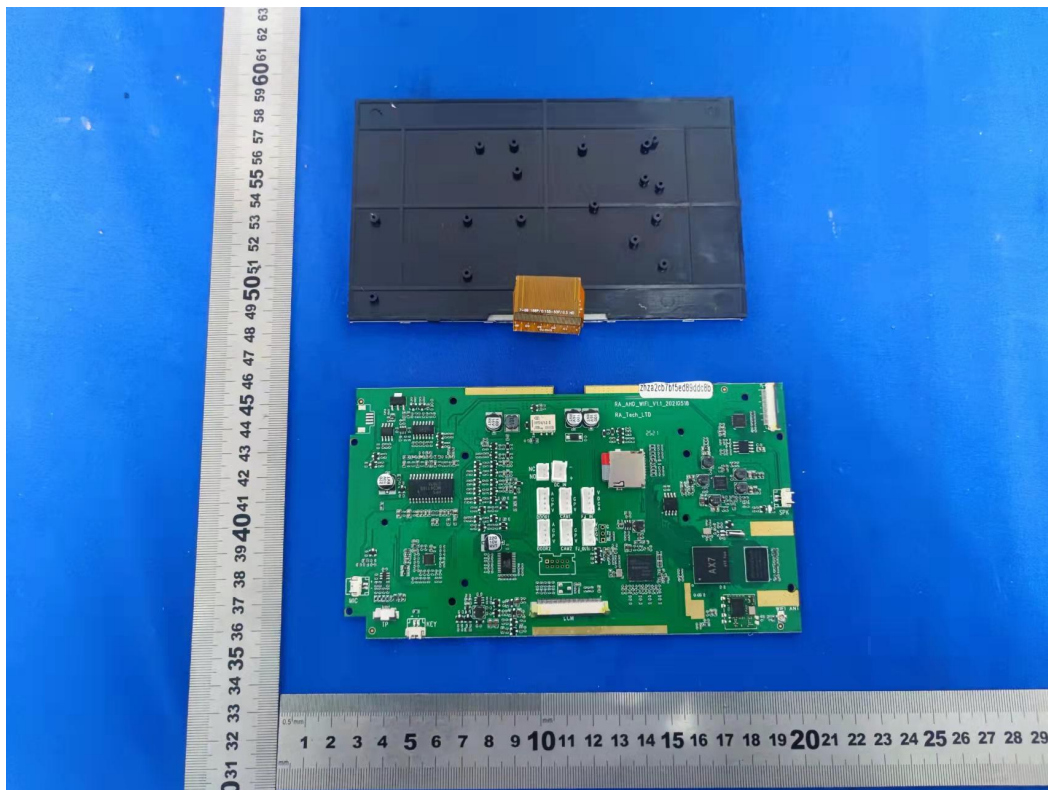


Photo 4



A green printed circuit board (PCB) is shown against a blue background. The PCB is rectangular with four circular holes: one at each end and two in the center. A small notch is located between the two central holes. On the right side, a white connector is attached, with red and black wires extending from it.

Photo 7

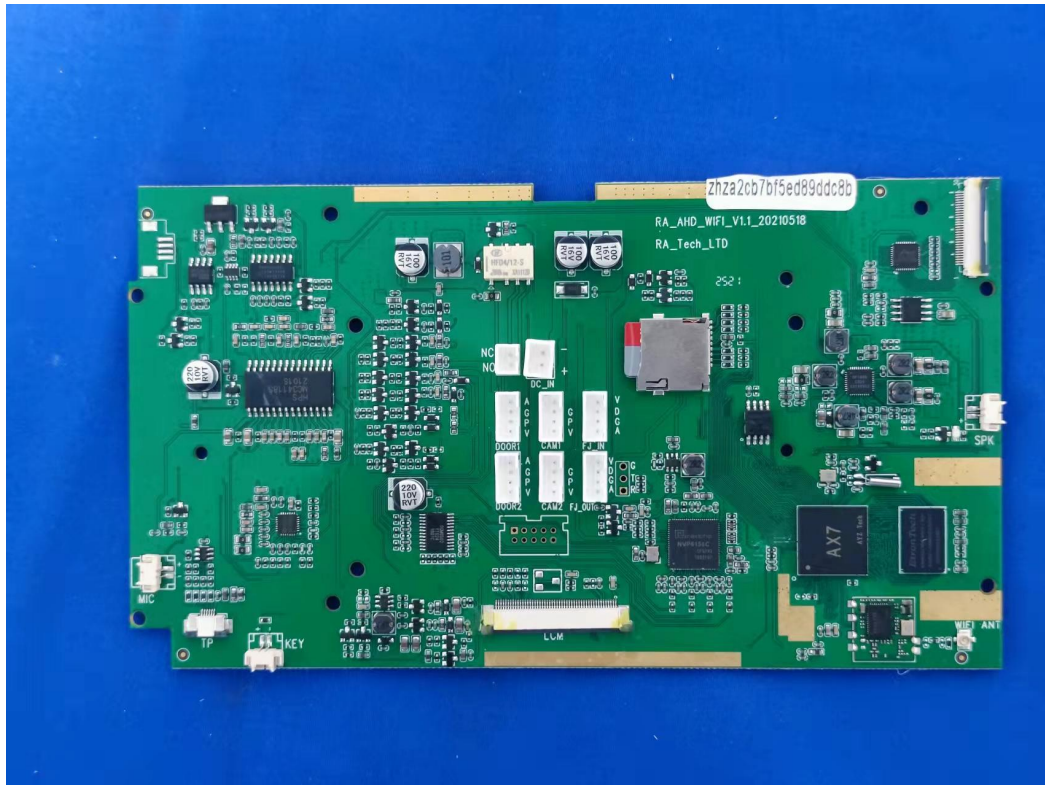


Photo 8

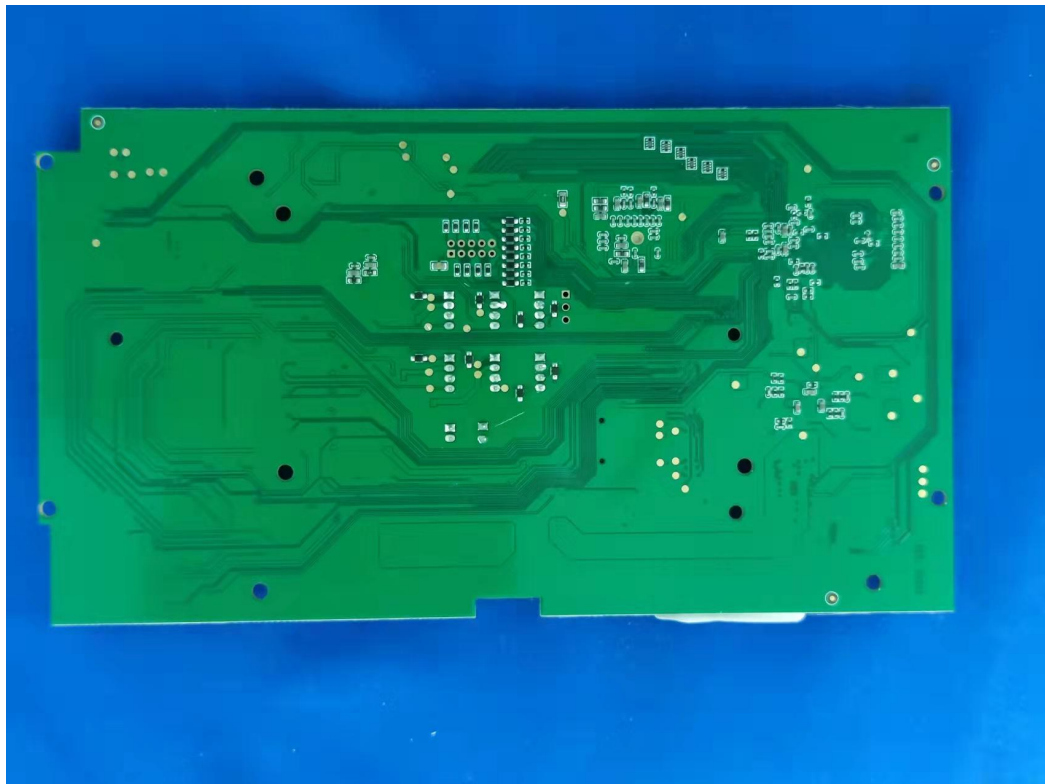


Photo 9

