

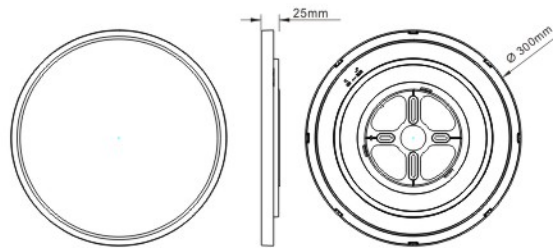
# LED CEILING LIGHT

## English USER MANUAL

### Parameters

Model	Input Voltage(V)	Power (W)	CCT(K)	Produce Size D*H(mm)
LA-RC24W12	AC110-277	24	3000-6500	φ 300* H25

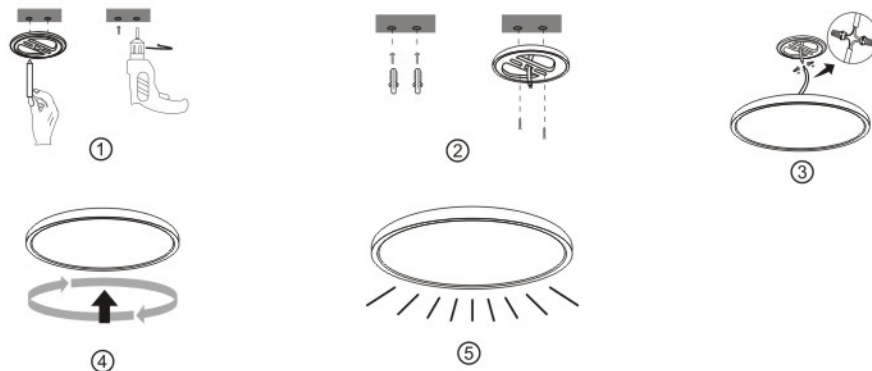
### Product Specification



### Packing List

Item	Name	Qty	Unit	Remark
1	LED Ceiling Light	1	pcs	The packing list is for Ceiling Light
2	User Manual	1	pcs	
3	Screws,Wall Plug	1	pcs	
4	PE Sack	1	pcs	

### Installation Guide




- ① Align the screw holes on the hanging board and draw the holes with a pencil. Use a hammer drill to drill holes in the ceiling.
- ② Install the expansion tube into the hole on the ceiling. Fix the ceiling plate of the lamp to the ceiling with screws.
- ③ Connect the power input lines L and N on the lamp to the mains. Please turn off the power switch before wiring.
- ④ Align the lamp to the position of the ceiling plate, rotate the lamp counterclockwise to fasten it, and you will hear a "click" sound after installation.
- ⑤ Complete the installation. Just turn on the power and use it.

### Warning

- When the input voltage exceeds the standard range, it may cause fixedlight failure. Please be sure to use it under right input voltage.
- The fixed light used in high temperature will reduce its lifespan; consult more details with local distributor
- When installing this fxed light on traditional fluorescent lighting fixture, it's necessary to change the circuitry. Please contact local professional electrician to operate it.
- Make sure you cut off power before you start the installation procedure.

### Attention

- This fixedlight is non-waterproof,please use in dry locations only.
- Do not use with dimmers or totlly enclosed luminaries.
- Please keep the fixedlight away from any corrosive substance.When you clean it, please use dry cloth.
- Due to the fixedlight are installed on high places,please ensure personal safety when you clean and fix them.
- For non-user replaceable light sources,the light source contained in this luminaire shall only be replaced by the manufacturer or his service agent or a similar qualified person.
- When insulated terminal connect with LED Driver, input wire (LN)must insert into the bottom of insulated terminal. For the sake of security, it can prevent the inside insulated wire exposed.
- Products must be sold by professionals.

 Correct Disposal of this product  
This marking indicates that this product should not be disposed with other household wastes throughout the EU. With an aim of preventing unnecessary harm to the environment or human health from uncontrolled waste disposal, the product should be recycled responsibly to promote sustainable use of material resources.

## **FCC Radiation Exposure Statement:**

This equipment complies with FCC radiation exposure limits set forth for an uncontrolled environment. This equipment should be installed and operated with minimum distance 20cm between the radiator & your body.

## **FCC Warning**

This device complies with Part 15 of the FCC Rules. Operation is subject to the following two conditions: (1) This device may not cause harmful interference, and (2) this device must accept any interference received, including interference that may cause undesired operation.

NOTE 1: This equipment has been tested and found to comply with the limits for a Class B digital device, pursuant to part 15 of the FCC Rules. These limits are designed to provide reasonable protection against harmful interference in a residential installation. This equipment generates uses and can radiate radio frequency energy and, if not installed and used in accordance with the instructions, may cause harmful interference to radio communications. However, there is no guarantee that interference will not occur in a particular installation. If this equipment does cause harmful interference to radio or television reception, which can be determined by turning the equipment off and on, the user is encouraged to try to correct the interference by one or more of the following measures:

- Reorient or relocate the receiving antenna.
- Increase the separation between the equipment and receiver.
- Connect the equipment into an outlet on a circuit different from that to which the receiver is connected.
- Consult the dealer or an experienced radio/TV technician for help.

NOTE 2: Any changes or modifications to this unit not expressly approved by the party responsible for compliance could void the user's authority to operate the equipment.