



WINTPEA Owner's Manual

Ceiling fan

universal instruction manual

Read the instructions before installing
the ceiling fan

Keep this manual for future reference



Wintpea is a global company dedicated to the research and development of high-end ceiling fans. Our mission is to provide high-quality retractable ceiling fans for every family. As a team focused on the research and development of ceiling fans, we focus on providing customers with high-quality products and convenient services.

Since the fan is fragile, it may be damaged during transportation. If the fan you received has any damage or parts, please contact the manufacturer's customer service support on Amazon, and we will be happy to help you. Thank you.

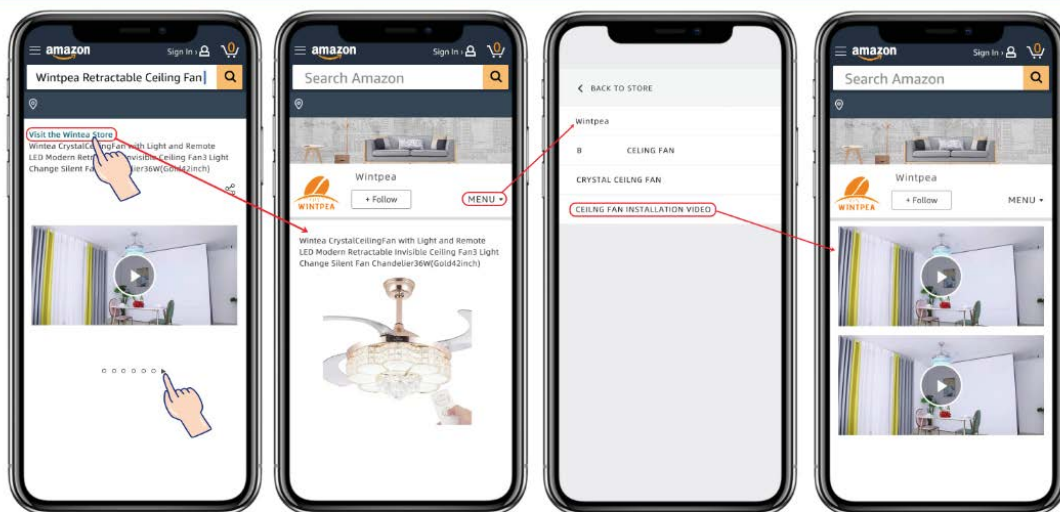
 WINTPEA

 Wintpea Customer Service Team

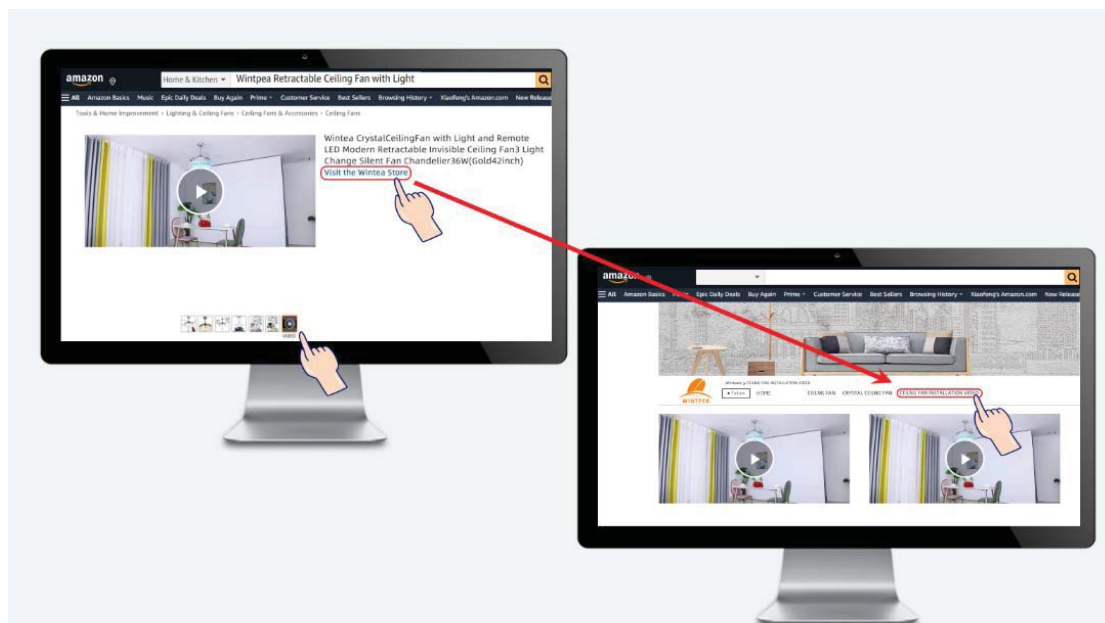
Ceiling fan light installation video	1
Ceiling fan installation tool list	3
Ceiling fan accessories list	5
1. Install the light source, speaker and lampshade	7
2. Install ceiling fan downrod ,coupling cover and canopy	10
3. Mounting Bracket installation	13
4. Install the remote control receiver	16
Instructions for remote control buttons	22
iLamp APP owner's manual	23
Troubleshooting guide	27
Problem: light doesn't work	27
Problem: speaker cannot play music	29
How to choose a suitable ceiling fan location for installation	30
Safety warnings	32

Please observe the owner's manual general safety precautions carefully before and during all phases of handling, installation, removal, operation and maintenance of this product. Failure to comply with these precautions violates safety standards of design, manufacture and intended use of the product. Wintpea assumes no liability for customer's failure to comply with these requirements.

CEILING FAN LIGHT INSTALLATION VIDEO



Click the seventh picture on the Amazon product details page to watch the installation video, or you can watch it in the installation video section of our Amazon brand flagship store.



2 Click the seventh picture on the Amazon product details page to watch the installation video, or you can watch it in the installation video section of our Amazon brand flagship store.

CEILING FAN INSTALLATION TOOL LIST



Electric drill & 8mm drill bit & Screwdriver Bit



Marker pen



Wrench



Wire Stripper

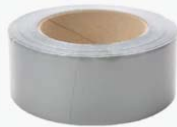
3



Screwdriver



Test Electric Pen



4

Gloves & Electric tape



Herringbone ladder

CEILING FAN INSTALLATION TOOL LIST



Mounting Bracket



Canopy & Coupling cover



Screw pack



4" and 8" Downrod

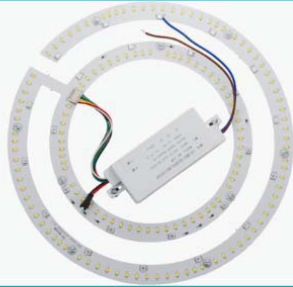
5



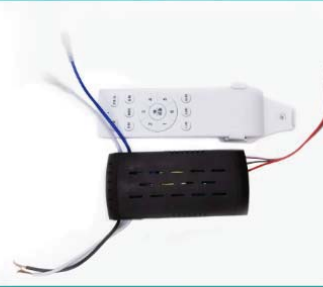
Motor



Lampshade



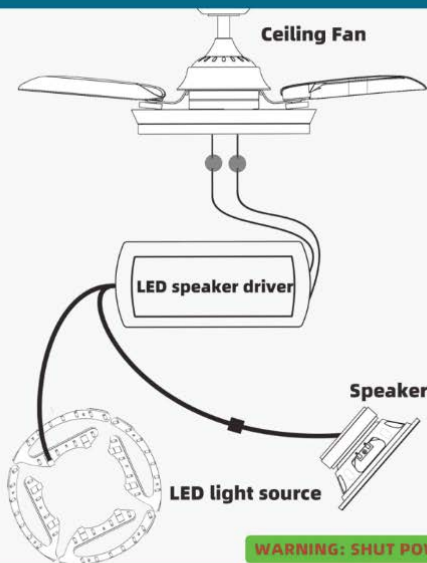
Drive & LED Board



Remote Receiver & Remote Control

6

1.INSTALL THE LIGHT SOURCE, SPEAKER AND LAMP SHADE



WARNING: SHUT POWER OFF AT FUSE OR CIRCUIT BREAKER

Connect Led Speaker driver with the wires from bottom of motor, you can choose any two wires for connection each other, and connect the speaker interface on the LED Speaker driver with the interface on the speaker, Then connect the LED light source interface on the driver with the interface on the LED light source.

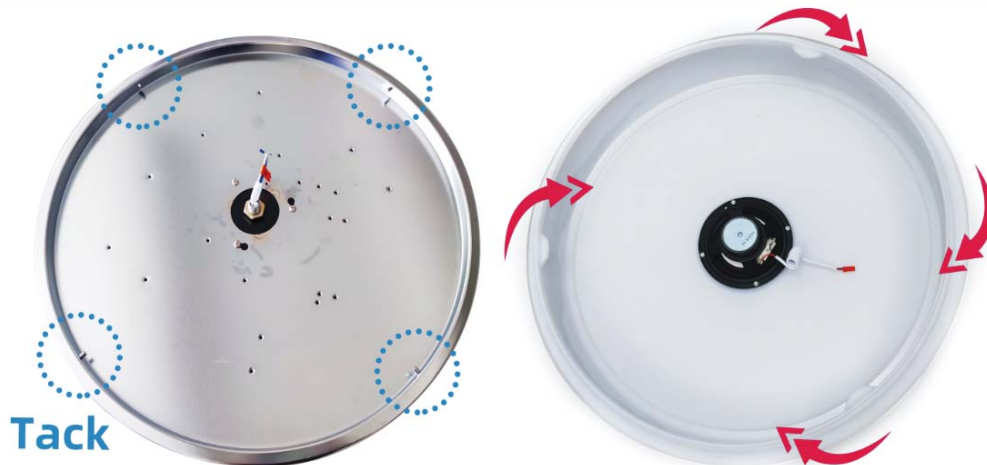
7

BUCKLE TYPE LAMPSHADE CONNECTION METHOD



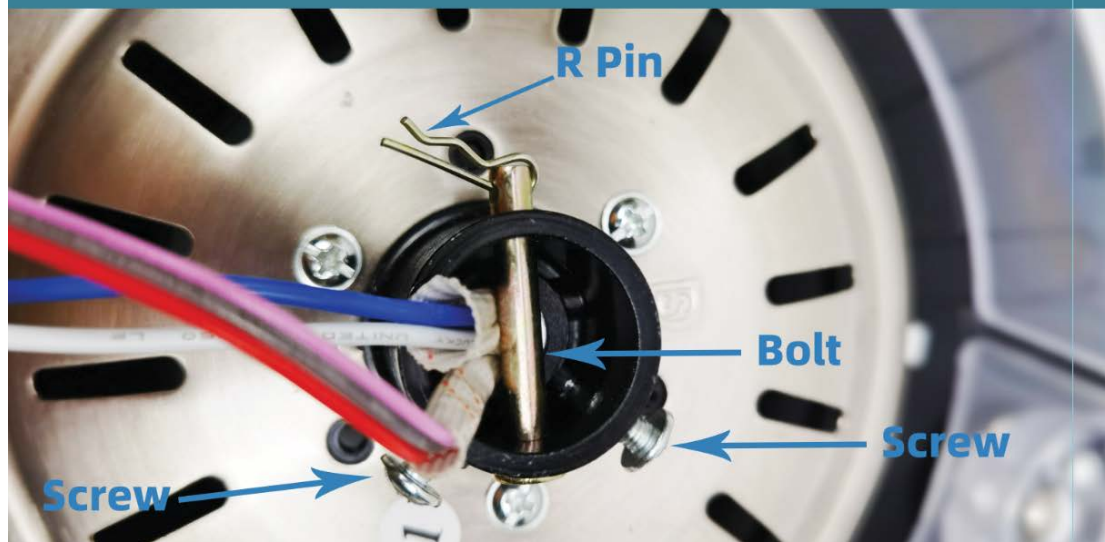
- 8 Align the card slots of the lampshade with the buckles on the motor one by one, and rotate the lampshade to fix it.

TACK TYPE LAMPSHADE CONNECTION METHOD



- Align the card slots of the lampshade with the tack on the motor one by one, and rotate the lampshade to fix it.

2.INSTALL CEILING FAN DOWNROD ,COUPLING COVER AND CANOPY



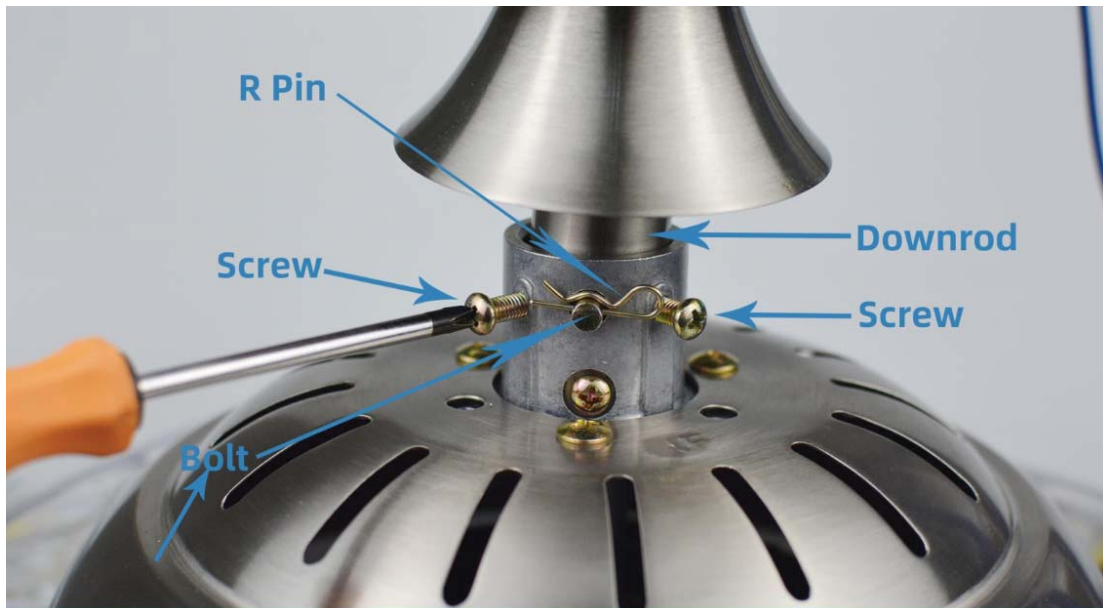
10

Remove the R pin from the motor and bolts, and loosen the screws on both sides



Pass the three wires of the motor through the Coupling cover, canopy and boom in turn

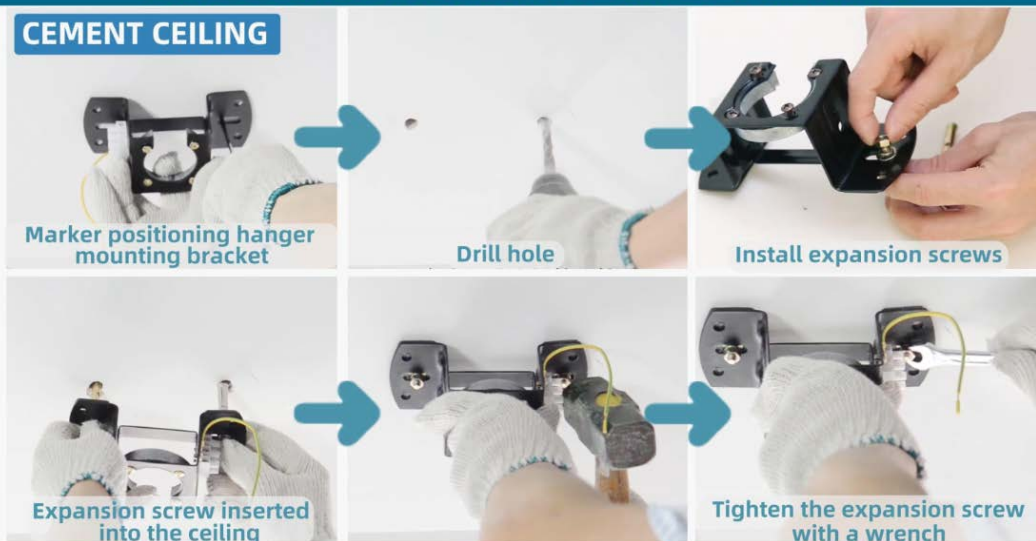
11



12 Lift the coupling cover, pass the bolt out of the hole in the motor base, then insert the R pin into the bolt. Finally, tighten the 2 screws evenly from both sides, otherwise it will cause the fan to shake.

3.MOUNTING BRACKET INSTALLATION

CEMENT CEILING



Use a marker to mark the location of the screw holes on the ceiling, then use an electric impact drill to drill holes in the cement ceiling, insert the expansion screws on the Mounting bracket into the holes, and finally fix the expansion screws in the cement ceiling with a wrench.

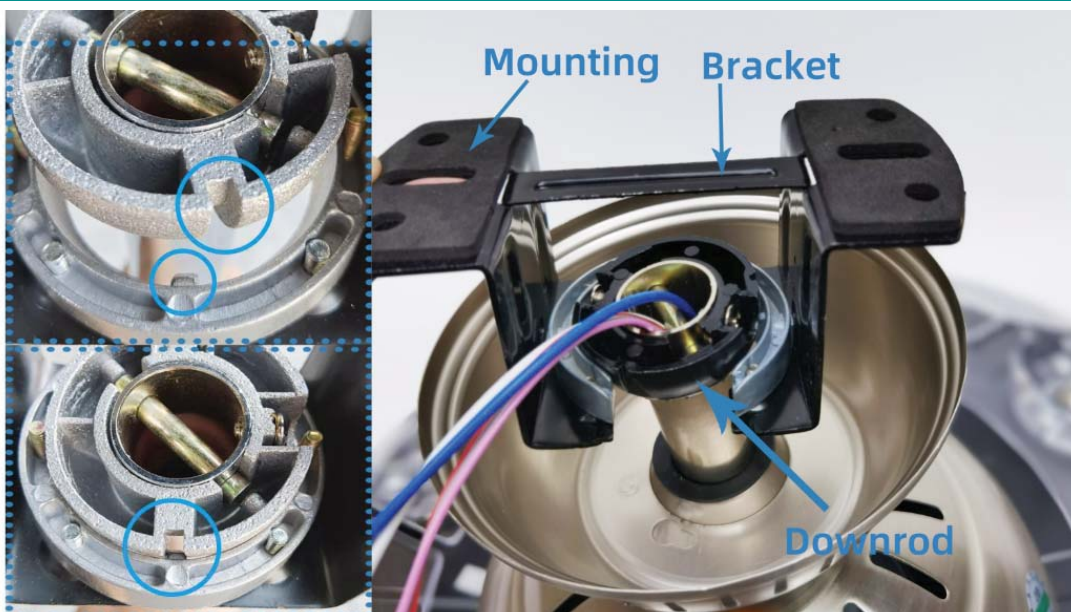
13

WOODEN CEILING



14

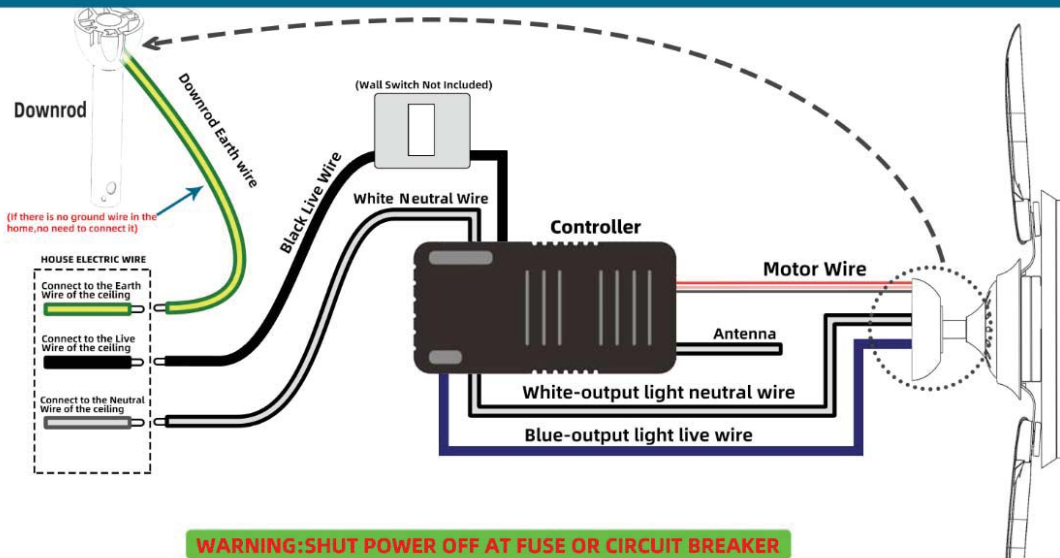
Use an electric drill to screw 4 self-tapping screws into the wooden ceiling to fix the mounting bracket.



Hang the motor to the ceiling mounting bracket, rotating the ball to mesh the groove of the ball with the bump of the hanger, the down rod must fix to the round hole, and confirm its stability, otherwise it will cause the fan to shake.

15

4.INSTALL THE REMOTE CONTROL RECEIVER



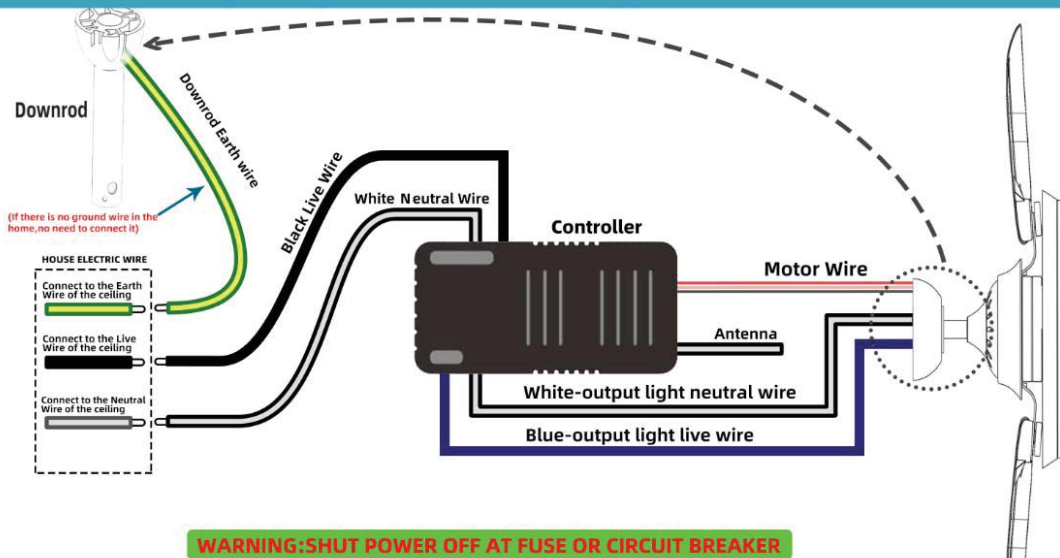
WARNING: SHUT POWER OFF AT FUSE OR CIRCUIT BREAKER

16

Connect the wire of the fan and the wire of the remote control receiver according to the color, and then put on the red wire protective cover.

Connect the black wire of the receiver to the live wire of the ceiling, the white wire to the Neutral wire of the ceiling, and the yellow wires on the downrod to the earth wire.

Wiring diagram 2: Installing the wall switch



WARNING: SHUT POWER OFF AT FUSE OR CIRCUIT BREAKER

Connect the wire of the fan and the wire of the remote control receiver according to the color, and then put on the red wire protective cover.

Connect the black wire of the receiver to the live wire of the ceiling, the white wire to the Neutral wire of the ceiling, and the yellow wires on the downrod to the earth wire.

17

INSTALLATION STEPS OF MODERN MODELS

Frequencyconversion remote control wiring method

SCHEMATIC DIAGRAM OF REMOTE CONTROL WIRING

Note:

1. Wall switch can only control lightscontrol fans need to use the remote control
2. Do not use this product with any adjustable speed wallcontrol device



WARNING

Turn off the main power before installation

The wiring mode is one live line and one neutral line

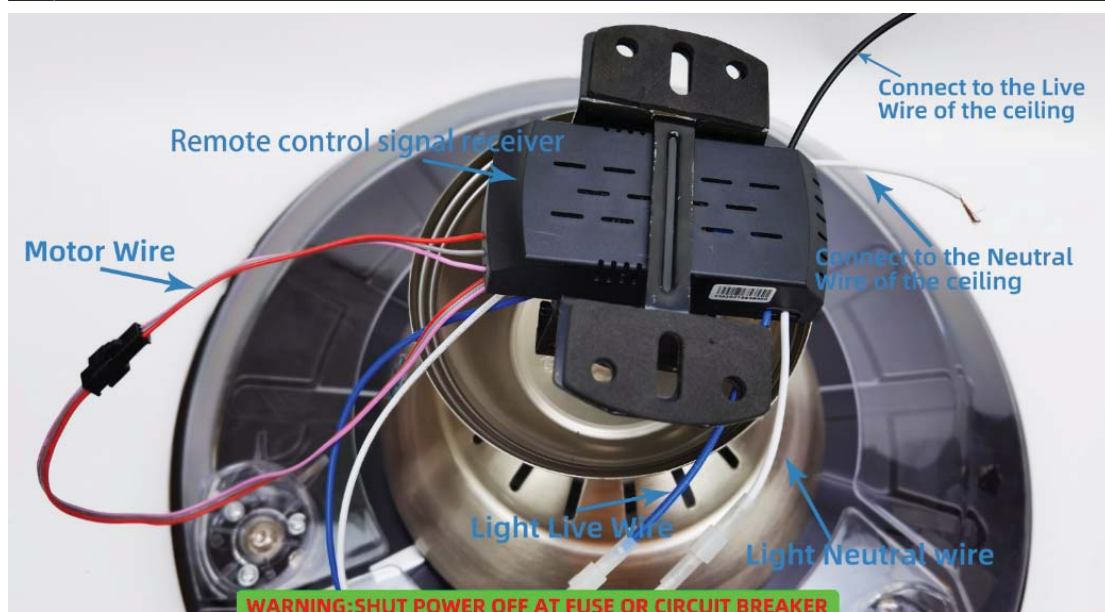
Installation requirements

1. It can be installed with ordinary wiring, and it can also be installed with old house
2. reconstruction without wiring, which is suitable for installation without multiwiring

ANNOUNCEMENTS

Connect the wiring strictly according to the requirements shown in the remote control wiring diagram, and never connect the wiring incorrectly or mix colors, otherwise it will not work normally, and the circuit board will be severely short-circuited and burned.

18

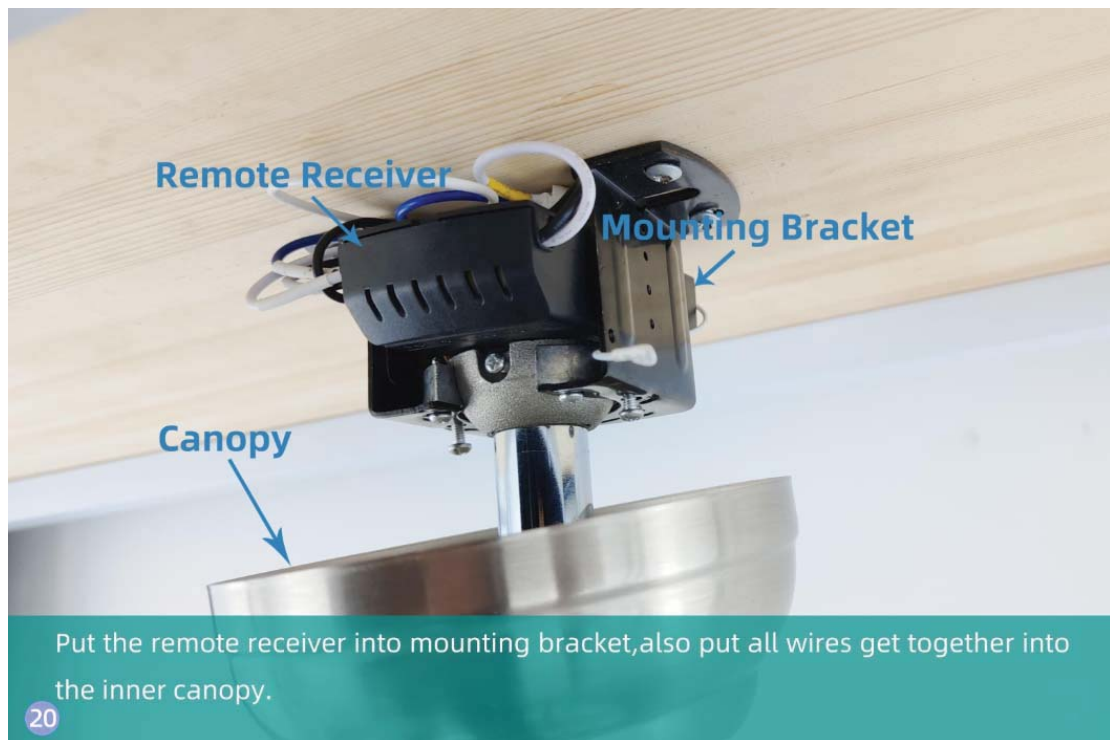


WARNING: SHUT POWER OFF AT FUSE OR CIRCUIT BREAKER

Connect the wire of the fan and the wire of the remote control receiver according to the color, and then put on the red wire protective cover.

Connect the black wire of the receiver to the live wire of the ceiling, the white wire to the Neutral wire of the ceiling, and the yellow wires on the downrod to the earth wire.

19



INSTRUCTIONS FOR REMOTE CONTROL BUTTONS



22

Ilamp app owner's manual

Installation instructions:

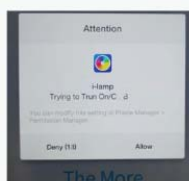
- ① Install an APP software:
Put the remote receiver into mounting bracket, also put all wires get together into the inner canopy.
- ② Add/delete/Rename the bulb:
Turn on the bulb, and then turn on the "iLamp" software and add the light according to the following steps:



Click "iLamp"



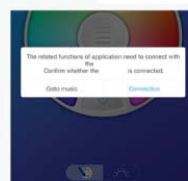
APP will automatically search for iLamp



Click "Allow"



Click "iLamp" to connect it.



Click "Connection"



After connect it, you can click ① to rename or delete the device.

23

③ Function Introduction of Main Interface:

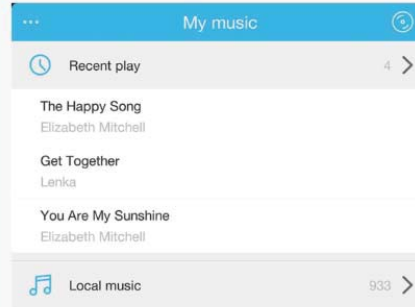


- Click "switch on-off key", can control the whole light's lamplight. This button only controls the lights, not the speaker music.
- At "light colour select area" rotate the block, can choose main light and illumination colour.
- Click "main light source and illumination switchover" can switch main light source between illumination.

d. "Brightness adjust", scroll up and down can adjust main light source and illumination brightness.

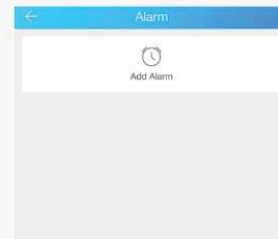
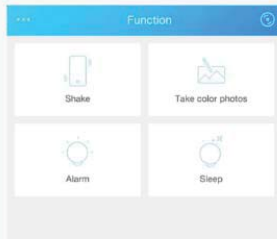
e. "Effect of light select area" have: none effect of light, rhythm. Rainbow, pulse, candle 5 options, esc effect of light click "none effect of light" or click another colour select area.

f. Click "music" play local music or cloud music, click "effect of light", "rhythm" to let the colored lights change with the rhythm of the music.

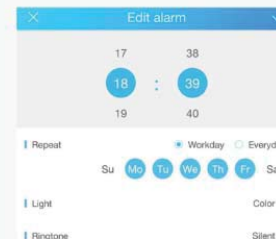


24

④ Interest function introduction



- Click "shake" can adjust colour, player and light correlation function's setting and adjustment.
- Click "photo colour tip" can extract light colour from the photo.

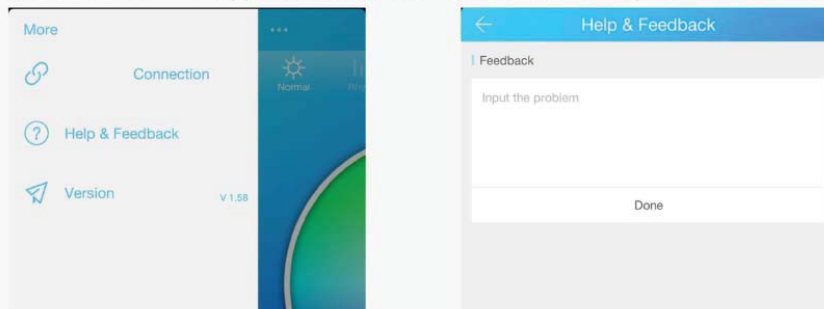


- Click "timing on" to set light up time. lamplight. ringtone, as a alarm to turn on the light.
- Click "timing off" to setup light off time. the light will turn off when the setup time has came, will turn off and become mute gradually.

25

⑤ Menu function introduction

Click the "menu" icon in the upper left corner to show connection, help feedback, version.



a."connection", click to search light, detail from previous introduction.

b."Help feedback" in the course of use if have question or relevant feedback, can write down here.

c."version", shows application's version and search the latest version.

Remark: after phone's B match with light's B. You can use any kind of player in the phone to play music.

The characteristic of B technology, through-wall ability is weak, when install the light, make sure install at a frequent used area, avoid control the light through-wall.

OS X system : Need to match twice. Connect phone's B first, and connect the app's B

26

Problem: light doesn't work

If you have difficulty operating your new ceiling fan, it may be the result of incorrect assembly, installation, or wiring.

In some cases, these installation errors may be mistaken for defects. If you experience any faults, please check this Trouble Shooting guide. If a problem cannot be remedied, please consult with your authorized electrician and please feel free to contact us via Amazon.

1. Ceiling fan lights are not compatible with dimmer switches and can be used with ordinary wall control switches. If the wall control switch and remote control are installed at the same time, the wall control switch can only control the lights, and the remote control can control the lights and fans. When the wall control switch is off, the remote control will not work.

2. Check circuit fuses or breakers and make sure the battery is installed correctly.

3. Check line wire connections to the fan and switch wire connections in the switch housing.

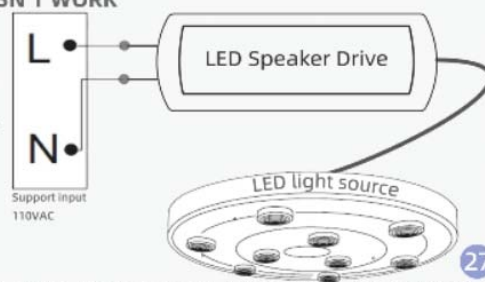
CAUTION: Make sure main power is off.

Solution:

1. Check whether the blue wire of the remote receiver and the blue wire of the fan motor are in bad contact.

2. Connect the home neutral wire and live wire directly to the LED driver (no need to connect the remote receiver and fan) to determine whether the LED light is faulty. If the LED light does not work, please contact our manufacturer's customer service on Amazon to replace it for you.

PROBLEM: LIGHT DOESN'T WORK

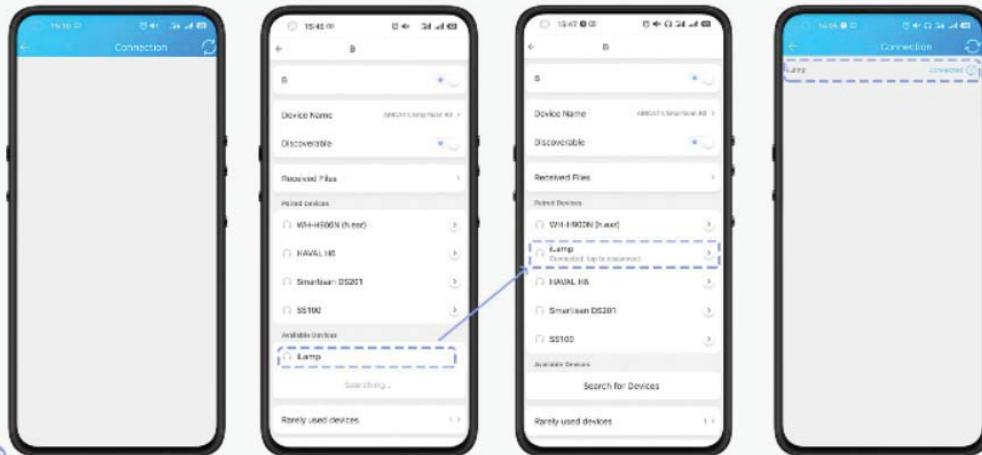


PROBLEM: SPEAKER CANNOT PLAY MUSIC

1. Cannot connect to "iLamp"

a) iLamp APP cannot search for device named "iLamp"

solution: Open the phone settings, search to find device named "iLamp", click "iLamp" to connect the speaker, when you hear a ding-dong, it means that the speaker is successfully connected.



28

b) The device named "iLamp" cannot be found in the phone settings

(1) The remote control turns off the lights, the speaker is not powered, and the speaker cannot play music.

solution: Turn on the remote control light and connect the speaker. If you need to play music with the light off, please turn off the light from the iLamp APP.

(2) LED speaker driver is damaged

solution: Contact our manufacturer's customer service on Amazon to send you a new LED speaker driver.



2. Connect to "iLamp", but no music.

First, please delete the device named "iLamp" in the phone-settings, and then search and connect it again.

a) Speaker doesn't play music

(1) Speaker is in poor contact with the driver's connector

solution: Unplug the speaker and driver interface, and then reconnect it

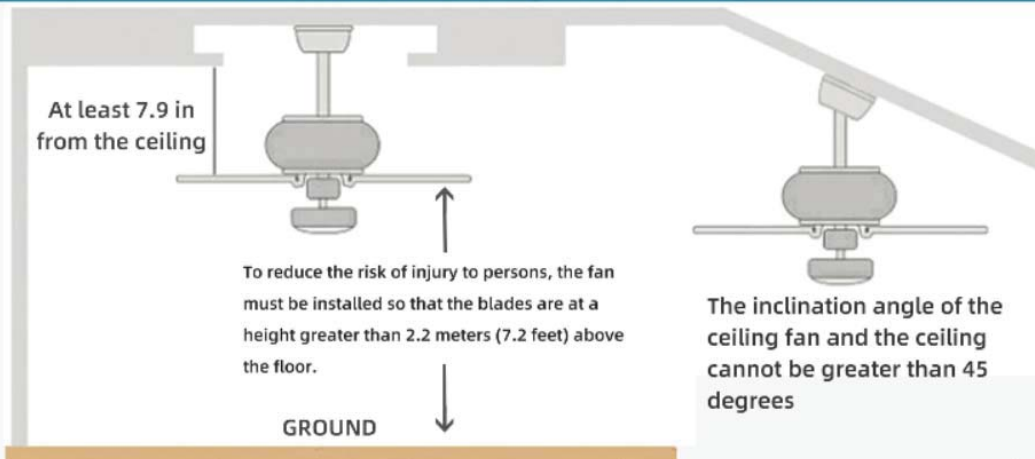
(2) Speaker damage

solution: Contact our manufacturer's customer service on Amazon to send you a new speaker to replace it.



29

HOW TO CHOOSE A SUITABLE CEILING FAN LOCATION FOR INSTALLATION



Recommendations for Downrod selection

10.8-11.5ft	10.8-13.1ft	13.1-14.1ft	14.1ft or more
5-10in	19.7-39.4in	39.4-59in	Not recommended for use

30

1. This fan is designed for indoor use.
2. For fan installed enclosed outdoors, the fan must be installed at least 59 inch from the perimeter of roof/eaves of the enclosure to protect the product from direct or indirect rain water or sunlight.
3. The chosen location for the fan must not allow the rotating blades to come into contact with any object.
4. Please check carefully and make sure that ceiling joists are strong enough and of adequate size to support the weight of about 65 lbs.
5. To reduce the risk of fire, electrical shock or personal injury, please make sure that the fan mounting bracket is directly supported from the building structure. Do not mount to an outlet box.
6. The mounting bracket must be firmly screwed to a load bearing building structure e.g. a concrete ceiling, steel structure, or a timber frame. If additional timber frames are to be added, those must be securely nailed or screwed between the beams.

SAFETY PRECAUTIONS

7. Check and confirm, after the fan is completely installed, that all connections are proper and secure to prevent the fan from falling or causing property damages or personal injury.
8. Take care not to bend or damage Fan Blades when handling or installing them. If such defect is noticed, please contact the Customer Service before installation of the ceiling fan.
9. Ceiling fan Downrod earth wire must be earthed.
10. Do not remove the fan from the ceiling after installation.
11. Make sure electricity is turned off at the main power box before commencing work. Turn off the power by removing fuse or turning off circuit breaker before installing the fan and replacing lamps

31

SAFETY WARNINGS

1. Read all instructions and safety information. Review assembly diagrams provided before installing your new ceiling fan.
2. This fan must be installed by a licensed and qualified electrician according to ETL and local authority regulations.
3. This appliance is not intended for use by persons (including children) with reduced physical, sensory or mental capabilities, or lack of experience and knowledge, unless they have been given supervision or instruction concerning use of the appliance by a person responsible for their safety.
4. Young children should be supervised to ensure that they do not play with the appliance.
5. All electrical works must only be undertaken after disconnection of the power by removing fuses or turning off the circuit breaker, to ensure all pole isolation of the electrical supply.
6. Do not use outdoors where it could be exposed to water or moisture.
7. This manual is not intended to instruct or assist untrained or unqualified persons to install this ceiling fan.
8. It is the responsibility of qualified, licensed installer and user to apply common sense and care at all times during installation and operation.

32

Warning:

This device complies with Part 15 of the FCC Rules. Operation is subject to the following two conditions: (1) this device may not cause harmful interference, and (2) this device must accept any interference received, including interference that may cause undesired operation. Changes or modifications not expressly approved by the party responsible for compliance could void the user's authority to operate the equipment.

NOTE: This equipment has been tested and found to comply with the limits for a Class B digital device, pursuant to Part 15 of the FCC Rules. These limits are designed to provide reasonable protection against harmful interference in a residential installation. This equipment generates uses and can radiate radio frequency energy and, if not installed and used in accordance with the instructions, may cause harmful interference to radio communications. However, there is no guarantee that interference will not occur in a particular installation. If this equipment does cause harmful interference to radio or television reception, which can be determined by turning the equipment off and on, the user is encouraged to try to correct the interference by one or more of the following measures:

- Reorient or relocate the receiving antenna.
- Increase the separation between the equipment and receiver.
- Connect the equipment into an outlet on a circuit different from that to which the receiver is connected.
- Consult the dealer or an experienced radio/TV technician for help.

NOTE: This device and its antenna(s) must not be co-located or operation in conjunction with any other antenna or transmitter

RF Exposure Statement

To maintain compliance with FCC's RF Exposure guidelines, This equipment should be installed and operated with minimum distance of 20cm the radiator your body. This device and its antenna(s) must not be co-located or operation in conjunction with any other antenna or transmitter

33

