

WiFi Water Sensor user manual



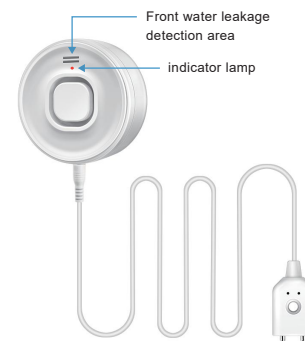
Please read this manual carefully before use and keep it for future reference.

Product parameter

Input voltage: DC3V LR03*2
Quiescent Current: $\leq 42\mu\text{A}$
Alarm current: $\leq 190\text{mA}$
Low Voltage: $\leq 2.4\text{V}$
Installation: Wall Hanging / Placed on the ground
WiFi: 802.11 b/g/n
Working Temperature: $-10^{\circ}\text{C} \sim +60^{\circ}\text{C}$
Working humidity: 95% RH max
Detection line length: 1 meter
Product size: $\phi 64.5 \times 30.5\text{mm}$

1

Schematic diagram of the product



2

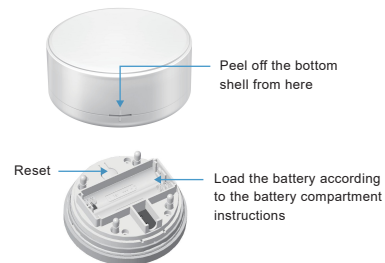
1. Download the smart Life APP from the app store, or scan the QR code below to log in.



Android/iOS

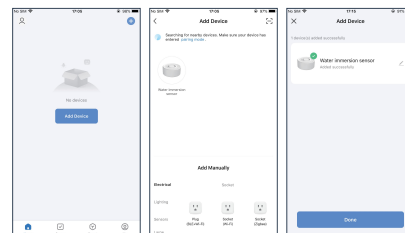
3

2. Remove the bottom shell against the prily open position, press and hold the reset button for more than 5 seconds, the indicator light flashes slowly to enter the Bluetooth networking, and the APP enters the "WiFi password" according to the prompts, and clicks OK to add it successfully.



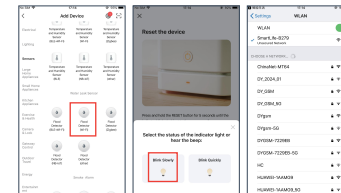
4

3. **Bluetooth networking:** Turn on the Bluetooth of your mobile phone, then enter the smart Life APP, click "+" in the "My Home" interface or click the middle blank space to "Add device". The app interface will automatically discover the device and input the WiFi password (WiFi can only be 2.4GHz) to automatically complete the networking.



5

4. If the Bluetooth networking mode fails to network successfully, turn off the Bluetooth of the mobile phone, select the sensor → temperature and humidity sensor (WiFi) → input "WiFi password" → confirm that the indicator light flashes--select slow flash → go to connect SmartLife-XXXX network and return to the APP to continue adding devices

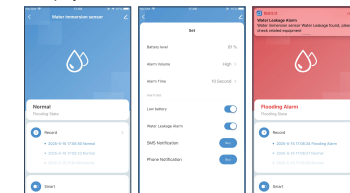


5. After the distribution network is successful, click the water icon to enter the product interface

※ When the bottom of the water is touched by any two 1/4 probes, the APP pushes "water leakage detected" and the buzzer will beep. The water intrusion state shows "water intrusion alarm".

6

※ The water probe does not touch the water, and the buzzer stops ringing (default 10 seconds, time can be set). The water intrusion status is displayed as "normal".



Attention:

※ To upgrade the product, you need to press the reset button for 5 consecutive short times. When the indicator light is always on, it indicates that the upgrade has been entered. Click the APP to upgrade.

※ Set the function, such as alarm volume, the APP displays a red exclamation mark, you need to press the reset button once or trigger the alarm once, the next time the trigger can take effect.

7

Federal Communications Commission (FCC) Statement

This device complies with part 15 of the FCC Rules. Operation is subject to the following two conditions:

- (1) This device may not cause harmful interference, and
- (2) this device must accept any interference received, including interference that may cause undesired operation.

Note: This equipment has been tested and found to comply with the limits for a Class B digital device, pursuant to part 15 of the FCC Rules. These limits are designed to provide reasonable protection against harmful interference in a residential installation. This equipment generates, uses and can radiate radio frequency energy and, if not installed and used in accordance with the instructions, may cause harmful interference to radio communications. However, there is no guarantee that interference will not occur in a particular installation. If this equipment does cause harmful interference to radio or television reception, which can be determined by turning the equipment off and on, the user is encouraged to try to correct the interference by one or more of the following measures:

- Reorient or relocate the receiving antenna.

- Increase the separation between the equipment and receiver.

- Connect the equipment into an outlet on a circuit different from that to which the receiver is connected.

- Consult the dealer or an experienced radio/TV technician for help.

Warning: Changes or modifications made to this device not expressly approved by Dongguan Daying Electronics Technology Co.,LTD may void the FCC authorization to operate this device.

Note: The manufacturer is not responsible for any radio or TV interference caused by unauthorized modifications to this equipment. Such modifications could void the user's authority to operate the equipment.

RF exposure statement:

The transmitter must not be colocated or operated in conjunction with any other antenna or transmitter. This equipment complies with the FCC RF radiation exposure limits set forth for an uncontrolled environment. This equipment should be installed and operated with a Minimum distance of 20cm between the radiator and any part of your body.