

210.00mm

142.50mm

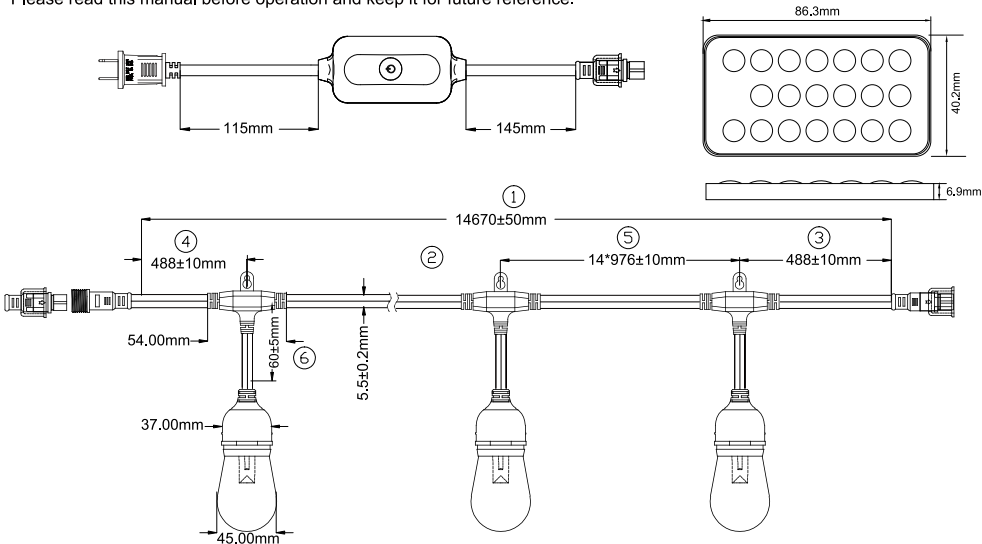
80g书纸, 正反面

# LED RGB String Lights

USML-RGB03-1

Please read this manual before operation and keep it for future reference.

Model: GLS22C2RGBW-SC-15



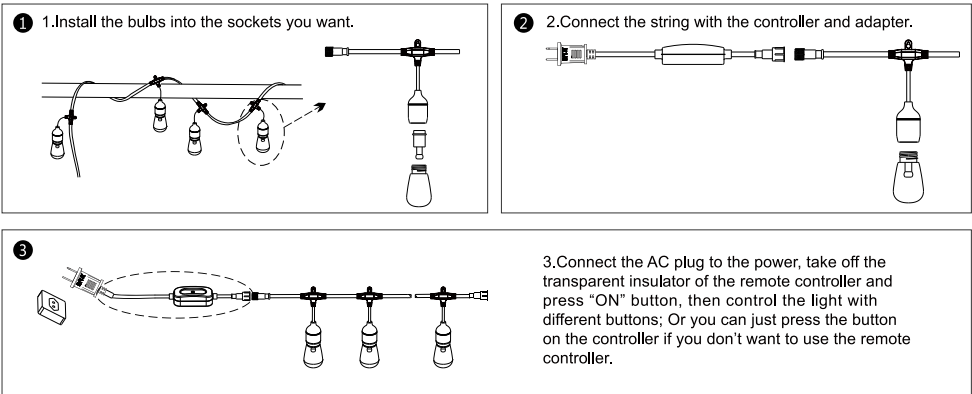
## Parameters

Total Length: 48FT  
Total Socket: 15 Sockets  
Input: 120-240V AC, 60HZ  
Bulb Type: S14  
Beam Angle 270°  
Operation Temperature: -4-104F(-20-40 C)  
Controller Reception Mode: Radio Frequency (RF)  
Remote Controller Battery Type: 2xCR2025 (included)

## Package Includes

1 x String Light with 18 S14 LED Bulbs  
1 x Controller  
2 x Remote Controller  
1 x User Manual

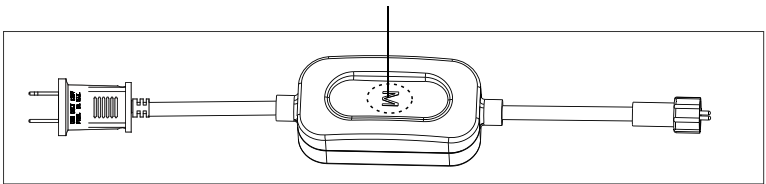
## Installation Procedure



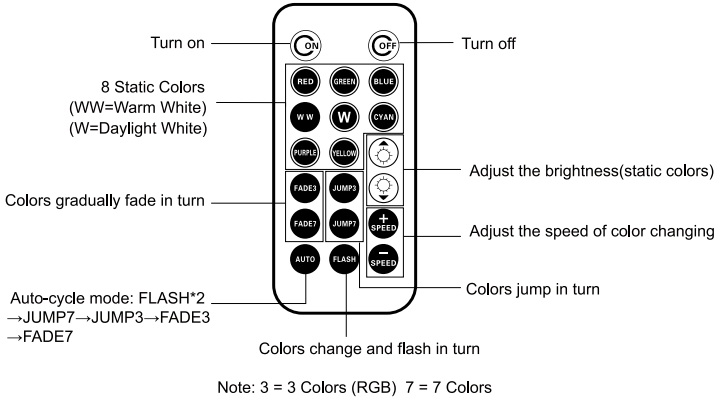
## Operating Instructions

### How To Use The Controller

The button on the controller can serve as the remote controller, as it is able to turn on the string lights, from static single color to fade, jump, flash modes. When the remote controller is missing or out of battery, you can use this button to control the light.  
Long Press: Turn on or turn off the light.  
Short Press: Change different modes as the functions of the remote controller. (But you can't adjust the brightness or speed.)



### How To Use The Remote Controller



### NOTES

- Under the modes of FADE, JUMP, AUTO, or FLASH, it is unable to adjust the brightness.
- If you choose static color, then you can't adjust the speed.
- This product has **memory function**, whenever you turn on, the light will start as the last time you turn off.

### CAUTION

- The product is NOT a toy. To avoid risk of fire, burns, personal injury or electric shock, please install in a place where children cannot reach.
- To reduce the risk of electric shock, DO NOT operate when no bulbs on the sockets.
- When the string light is used outdoor, please connect it to a Ground Fault Circuit Interrupting (GFCI) outlet.
- The string light and the bulbs are waterproof, but the remote controller is NOT waterproof.
- DO NOT install near gas or electric heaters, fire, candles or any dangerous places.
- DO NOT use staples or nails to fix the wiring of the product, or place it on sharp hooks.
- DO NOT place the lamps on the supply cord or any wire.
- DO NOT cover the product with cloth, paper or other objects when in use.
- Unplug it when not used, store in a cool, dry place and avoid sunlight, never leave it unattended.

### After-sales Service Guarantee

12-Month warranty is provided for this device from the date of purchase. If you have any issue or query when using this device, please sign in to Amazon and contact us or email us via MLambert@163.com.  
Note: An order ID with detail description or image is preferred when contacting our customer service if possible.

### Warranty

- During the warranty period, we provide services including refund or replacement without charge to those who use the device in accordance with the user manual.
- This warranty does not cover:  
(A) Failure or damage due to the improper use, repair or remodeling.  
(B) Failure or damage because of falling.  
(C) Failure or damage caused by fire, earthquake, flood, lightning and other natural disasters.  
(D) Failure or damage when used other than its intended use.  
(E) Failure or damage caused by the third-party products other than this device.

Made in China

## **FCC Statement**

This equipment has been tested and found to comply with the limits for a Class B digital device, pursuant to part 15 of the FCC Rules. These limits are designed to provide reasonable protection against harmful interference in a residential installation. This equipment generates, uses and can radiate radio frequency energy and, if not installed and used in accordance with the instructions, may cause harmful interference to radio communications. However, there is no guarantee that interference will not occur in a particular installation. If this equipment does cause harmful interference to radio or television reception, which can be determined by turning the equipment off and on, the user is encouraged to try to correct the interference by one or more of the following measures:

- Reorient or relocate the receiving antenna.
- Increase the separation between the equipment and receiver.
- Connect the equipment into an outlet on a circuit different from that to which the receiver is connected.
- Consult the dealer or an experienced radio/TV technician for help.

Caution: Any changes or modifications to this device not explicitly approved by manufacturer could void your authority to operate this equipment.

This device complies with part 15 of the FCC Rules. Operation is subject to the following two conditions: (1) This device may not cause harmful interference, and (2) this device must accept any interference received, including interference that may cause undesired operation.

### **RF Exposure Information**

The device has been evaluated to meet general RF exposure requirement. The device can be used in portable exposure condition without restriction.