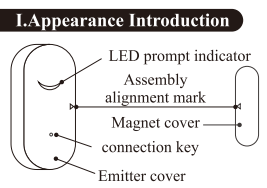


WiFi intelligent alarm

Operation Instructions



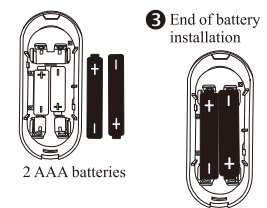
I.Appearance Introduction

1.Way for battery installation

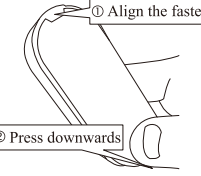
- 1. Open the rear cover of the emitter



- 2. Place two 7# batteries (AAA batteries) properly



- 4. Close the rear cover

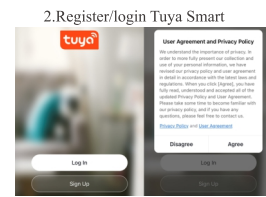


III.Tuya Smart

- 1.Download APP

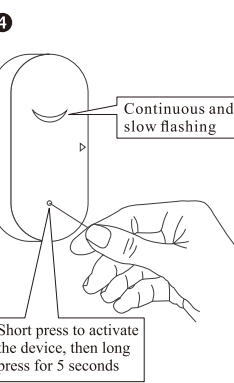
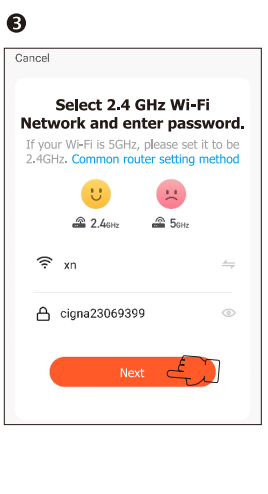
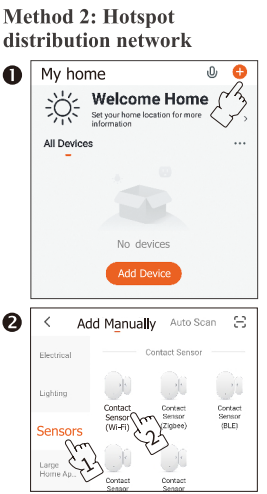
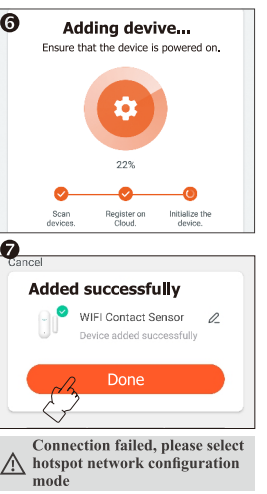
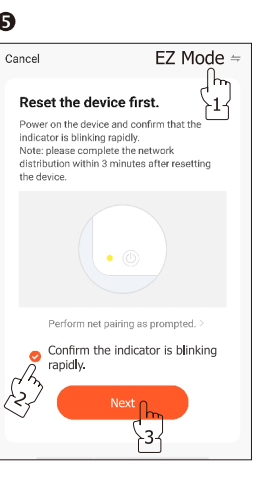
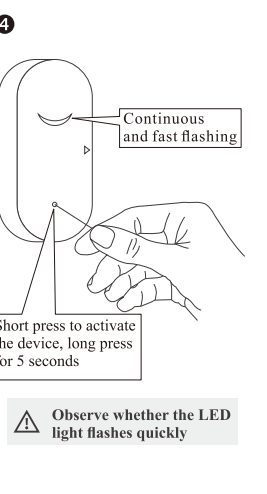
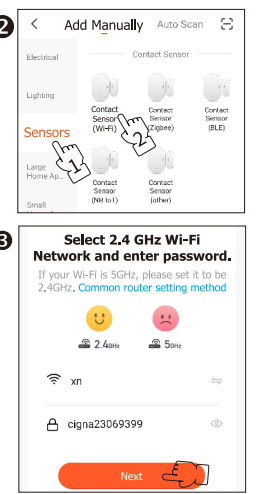
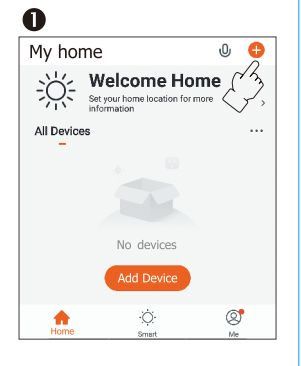


>Scan the two-dimensional code and download "Tuya Smart or (Smart Life)".
>OS: please download the "Tuya Smart or (Smart Life)" at apple application market.
>Android: please download the "Tuya Smart or (Smart Life)" at application market.

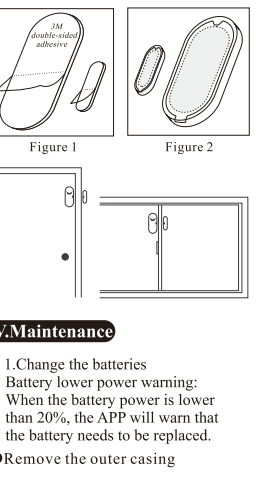
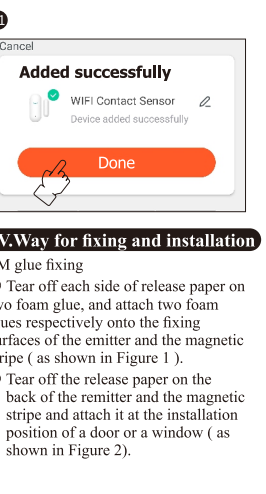
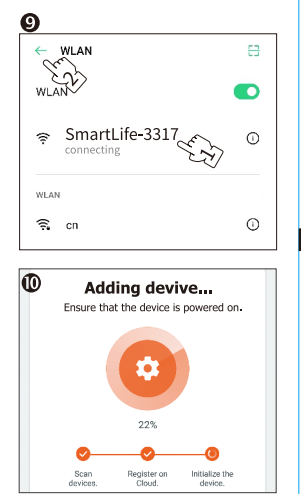
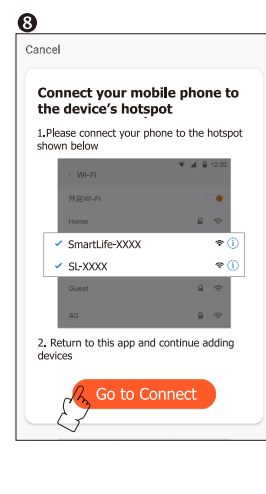
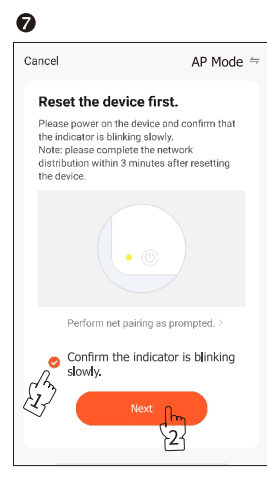
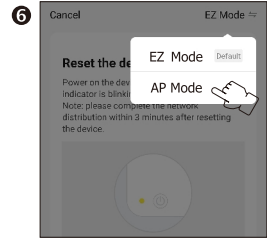
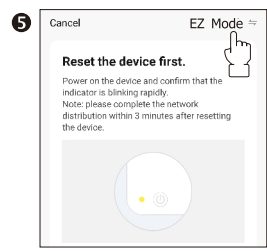


3. Network with mobile phone (two methods)

Method 1: Wi-Fi Quick Connect

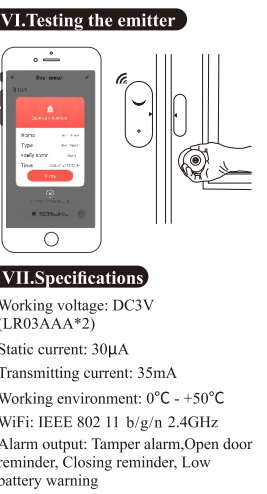
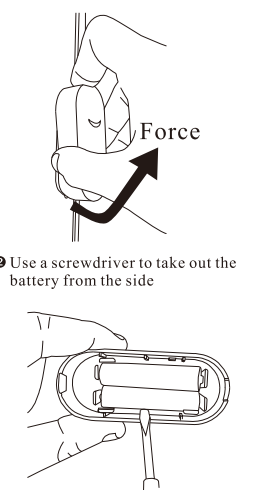


Observe whether the LED light flashes slowly, if it is not flashing slowly, press and hold for 5 seconds.



V.Maintenance

- 1.Change the batteries
Battery lower power warning: When the battery power is lower than 20%, the APP will warn that the battery needs to be replaced.
- 2.Remove the outer casing



FCC WARNING
This device complies with part 15 of the FCC Rules. Operation is subject to the following two conditions: (1) this device may not cause harmful interference, and (2) this device must accept any interference received, including interference that may cause undesired operation.
Any changes or modifications not expressly approved by the party responsible for compliance could void the user's authority to operate the equipment.
NOTE: This equipment has been tested and found to comply with the limits for a Class B digital device, pursuant to Part 15 of the FCC Rules. These limits are designed to provide reasonable protection against harmful interference in a residential installation. This equipment generates, uses and can radiate radio frequency energy and, if not installed and used in accordance with the instructions, may cause harmful interference to radio communications.

However, there is no guarantee that interference will not occur in a particular installation.
If this equipment does cause harmful interference, which can be determined by turning the equipment off and on, the user is encouraged to try to correct the interference by one or more of the following measures:
-- Reorient or relocate the receiving antenna.
-- Increase the separation between the equipment and receiver.
-- Connect the equipment into an outlet on a circuit different from that to which the receiver is connected.
-- Consult the dealer or an experienced radio/TV technician for help.
To maintain compliance with FCC's RF Exposure guidelines, This equipment should be installed and operated with minimum distance between 20cm the radiator your body: Use only the supplied antenna.