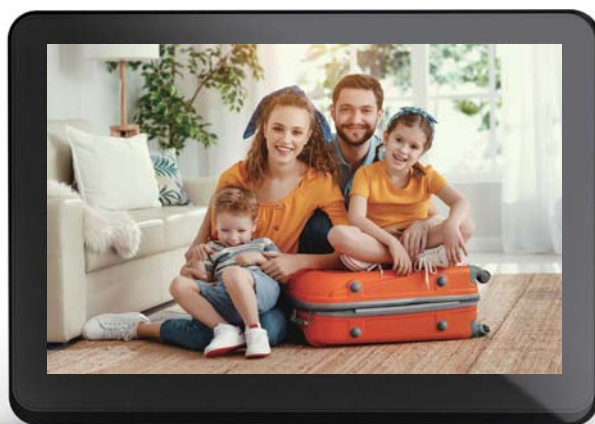


Wi-Fi PHOTO FRAME

User Manual



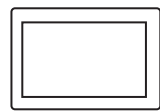
RoHS FC CE 

WELCOME	1
WHAT'S in the BOX	1
OVERVIEW	1
GETTING STARTED	2
INVITE FRIENDS to SHARE	4
UPLOAD PHOTOS and VIDEOS	6
CHANGE FRAME'S SETTINGS via FRAME	9
CHANGE FRAME'S SETTINGS via APP	12
FREQUENTLY ASKED QUESTIONS	15

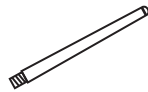
WELCOME

Thank you for purchasing the Wi-Fi photo frame. Please read the user manual carefully and completely before using the frame, and keep it for future reference.

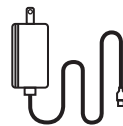
WHAT'S in the BOX



Wi-Fi Photo Frame



Bracket



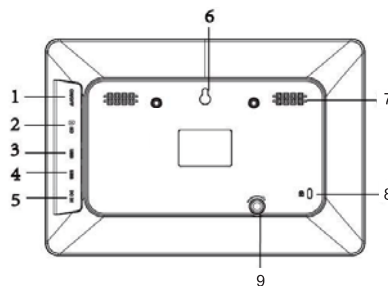
Power Adapter



User Manual

OVERVIEW

1. Power Button
2. SD Card Slot
3. USB Interface(only for factory use)
4. USB Port
5. DC Power Port
6. Wall Mount Hole
7. Speaker
8. keyhole
9. Support rod hole

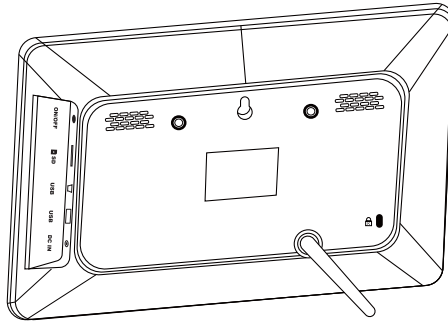


1

GETTING STARTED

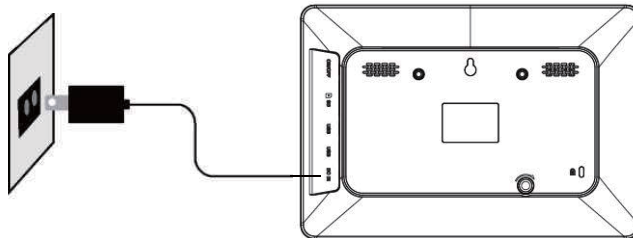
● Installation

Place the photo frame in landscape or portrait mode, install the stand to support the frame. You can also wall mounting your frame with the Wall Mount Hole on the back.



● Power On

Connect the power adapter into the back of the frame. And plug the power adapter into the wall socket. The frame will auto on.



● Initial Settings

When starting your frame for the first time, you need to setup the frame.



① Select a language

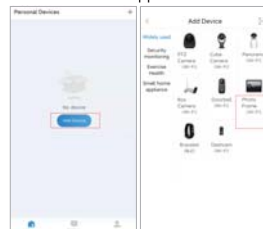


② Select your Wi-Fi network and enter the password and select "OK".
(only supports 2.4GHz Wi-Fi network)



③ Please download and install the Linkle App in your smart phone or tablet by searching Linkle on the Apple Store or Google Play.

④ Please open Linkle App, select "Create an Account" to create an account and log in (please log in directly if you already have an account).



⑤ Click "Add Device" on Linkle App - choose "Photo Frame (Wi-Fi)" - scan the QR code on your frame to connect your frame and app. (you can also find the code on "Settings" → "Device Info" → "Devices QR Code")

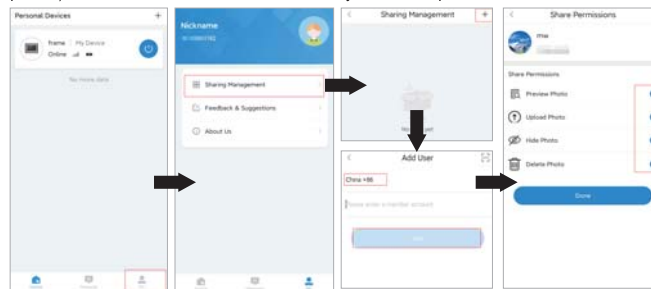
⑥ Enter the your frame name.

INVITE FRIENDS to SHARE

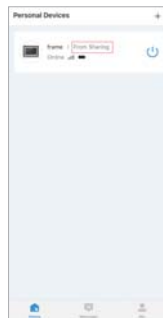
● Invite Your Friends to Share Photos and Videos via App

① Ask your family or friends to download and install Linklemo App and log in.

② Click the "My" on your phone → "Sharing Management" → "My Sharing" and click your device - click "+" icon at the right upper corner → enter your friend's phone number and click "OK". And you can set permissions (preview photos/ Upload photos/ Hide photos/ Delete photos) to limit the functions that can be used by the shared person.

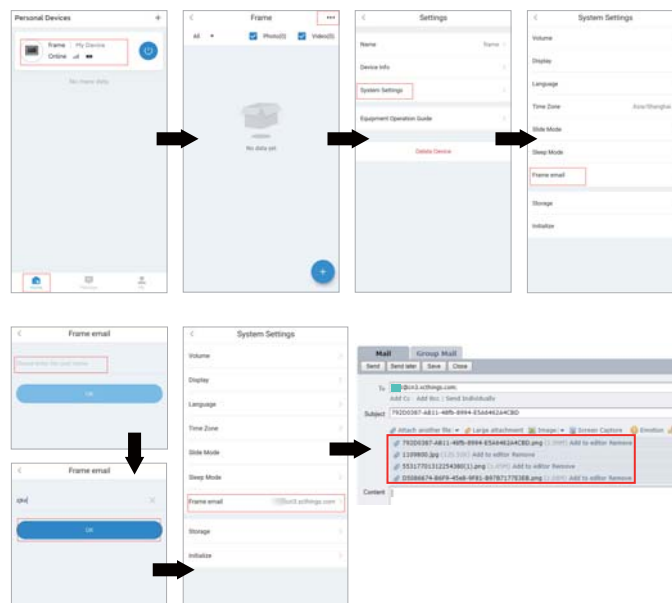


③ After adding friends, your friends can share photos or videos to your frame.



● Invite Your Friends to Share Photos via Email


①Click "Home" on your App and choose your device - click **☰** → "System Settings" → "Frame email"- enter 4-20 simple numbers or letters -Click "OK" - It will create frame email address for you. It will receive all photos by email for frame.
You and your friends can send photos attached (MAX 25MB) to the email you set and it will show on your frame. (please put the photos in the attachment)

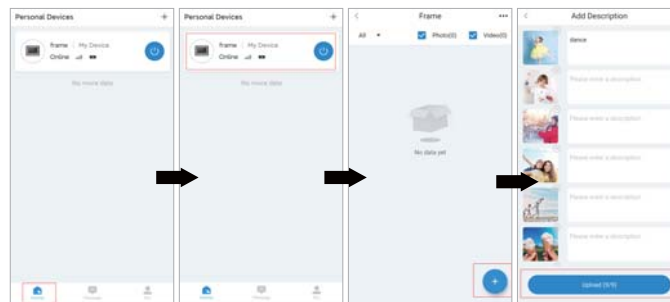


Note 1: The size of the photos uploaded by email can not exceed 25MB for one time.

UPLOAD PHOTOS and VIDEOS

● Upload Photo and Videos via Linklemo App

- ① Open App and log in. Make sure you have bound your account to your frame before.
- ② Click "Home" on your App and choose your device - click  at right bottom corner to upload your photos or videos.
- ③ You can choose to take photo or select photo from your album.
- ④ You can add description of your frame or not.

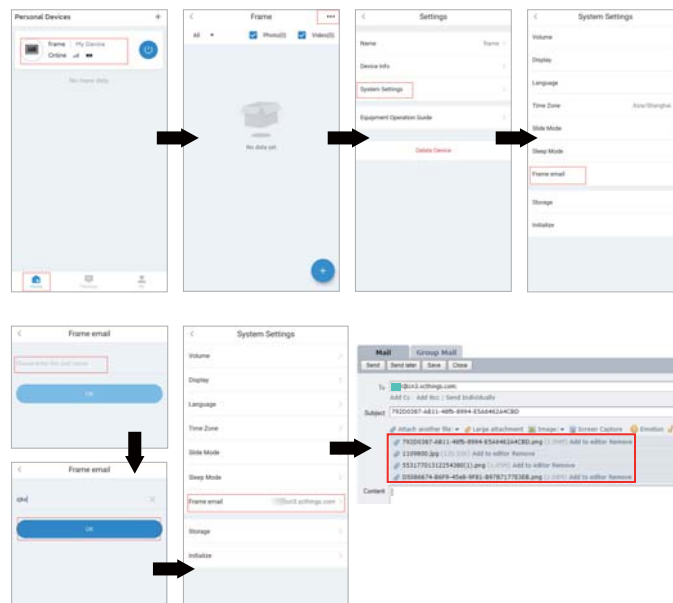


Note 1: Only 9 photos can be sent for one time.

Note 2: Video is limited to 15 seconds. If the video is longer than 15s, you can tap the video to cut the video to 15s.

● Upload Photo and Videos Via Email

① Click "Home" on your App and choose your device - click the *** at right upper corner → "System Settings" → "Frame email" - enter 4-20 simple numbers or letters - Click "OK"
 - It will create frame email address for you. It will receive all photos by email for frame.
 You and your friends can send photos attached (MAX 25MB) to the email you set and it will show on your frame.

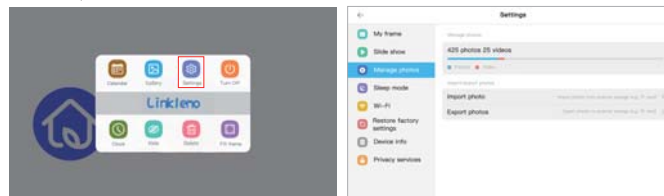


Note 1: The size of the photos uploaded by email can not exceed 25MB for one time.

● Upload Photo and Videos via SD Card or USB Drive

① Insert SD card or USB drive into the frame (Max support 128GB, at least class 10), and the frame will read the SD card or USB drive successfully in seconds.

② Enter the "Settings" on your frame, click "Manage photos" and you can "Import photos" (copy your photos & videos from your SD card or USB drive to your frame internal storage) or "Export photos" (copy your photos & videos from your frame internal storage to your SD card USB drive).



Import photos: select the photos & videos or just click the ☰ at right upper icon to choose all, then click the ⬇️ at right upper icon to download them on frame.

Export photos: select the photos & videos or just click the ☰ at right upper icon to choose all, then click the ⬆️ at right upper icon to download them on your SD card or USB drive.



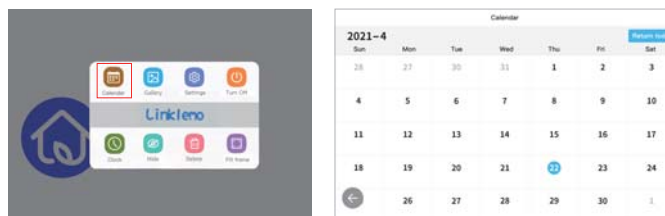
Note 1: The frame cannot recognize SD card and USB drive at the same time.

CHANGE FRAME'S SETTINGS via FRAME

You can navigate the menus through its touchscreen.

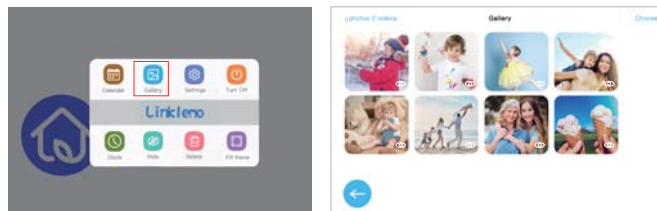
● Calendar

Click "Calendar" on the main menu to enter the calendar display interface.



● Gallery

Click "Gallery" to see all the photos stored in the frame. When photo is playing, swipe left or right to change photos. Tap the screen and it will show the main menu.



● Settings

Click "Settings" to see all the frame's settings.

● My frame

Frame name: change the name of your frame.

Set languages: choose a language for the frame. (English, Français, Deutsch, Italiano, Español, русский, 日本語, 简体中文.)

Set time zone: set the current time zone of the photo frame.

24-hour Format: set the format of the frame date display (12/24 hours format).

● Slide show

Slideshow: set whether the photo frame will play a slide show or not. If not, the frame will repeat one photo.

Display settings: Display Description - display the description of the photo; Fill frame - the photo will be fully viewed in vertical and horizontal way.

Brightness setting: adjust the current brightness of the photo frame.

Volume: set the video volume and notification volume of the photo frame.

Slideshow Interval: set the interval of slideshow.

Slideshow Mode: choose to play your photos randomly or in sequence.

Slideshow Switching Effects: set the photo slideshow effect.

● Manage Photos

Manage Photos: view the current internal storage space of the photo frame, as well as the number of photos and videos.

Import photos: insert SD card or USB Drive into the frame (Max support 128GB), and the frame will read the SD card or USB Drive successfully in seconds.

Choose "Import photos", and select the photos & videos or just click the ☰ at right upper icon to choose all, then click the ⬇ at right upper icon to download them on frame.

Export photos: insert SD card or USB Drive into the frame (Max support 128GB), and the frame will read the SD card or USB Drive successfully in seconds. Choose "Export photos", and select the photos & videos or just click the ☰ at right upper icon to choose all, then click the ⬇ at right upper icon to download them on your SD card or USB drive.

● Sleep Mode

Set the device's screen on / off within a specified time period.

● WiFi Settings

Set the photo frame network. It will save the previously set network, click to connect directly.

● Restore Factory Settings

Erase all the data in your frame

● Device info

The user can view the device QR code, device ID, device model, firmware version, frame email and check the update.(please update timely when there is a red dot on "Check the update") The device QR code and device ID are used to scan the device QR code or input the device ID when the user adds the device through the "Linklemo" APP.

frame email: email received all photos sent by email.

Firmware Version: when the photo frame has a new firmware version, a small red dot will appear at the firmware version, and the user can click "firmware version" to upgrade the firmware.

● Privacy Services

Users can view the privacy statement and service agreement of the photo frame.


● Turn Off

Click "Turn Off" to enter the shut down page. Click "Turn Off" to power off the photo frame. Click "Restart" to restart the frame. Click "Sleep" to immediately put the photo frame into sleep mode.

● Clock

Click "clock" on the main menu to enter the alarm clock interface.

● Hide

Hide the current photo or video. (hidden photo will show on photo preview with , but will not show on photo slideshow.)

● Delete

Delete the current photo or video.

● Fill frame

The photo will be fully viewed in vertical and horizontal way. If the current photo or video is already in the state of filling the frame, the button state will change to "Adapt Album", click it to make the current photo or video fit to the frame.

CHANGE FRAME'S SETTINGS via APP

You can change the frame's setting on your phone.

● Home

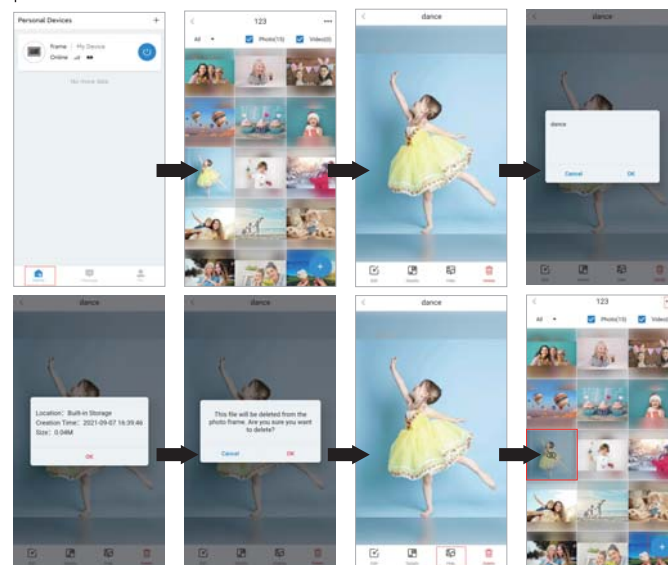
Click "Home" and choose your device and you can see all the photos and videos of frame. Click a photo or video to enter the preview state. (The video in the preview state cannot be played, it can only be played in the photo frame.)

In the preview state, you can edit the description of the photo or video. Click "Details" to view the location, creation time and file size of the photo or video. Click "Hide" or "Display" the photo or video.

Click "Delete" to delete the current photo or video.

Click "Home" and choose your device - click the **☰** icon at right upper icon to set your frame.

Click "Home" and choose your device - click the **+** icon at right bottom corner to upload photos or videos.



①Name

Set the name where you put the frame.

②Device Info

You can find all the related information about this frame, including product model, compiled version, firmware version, Device ID, owner.

③System Settings

Volume: set the video volume and notification volume of the photo frame.

Display: adjust the current brightness of the photo frame.

Language: choose a language for the frame. (English, Français, Deutsch, Italiano, Español, русский, 日本語, 简体中文.)

Time Zone: set the current time zone of the photo frame.

Slide Mode: set whether the photo frame will play a slide show or not. If not, the frame will repeat one photo.

Sleep Mode: set the device's screen on / off within a specified time period.

Frame email: set the email address that receives photos sent by email.

Storage: view the current internal storage space of the photo frame.

Initialize: erase all the data in your frame

④Equipment operation Guide

Operation to use the frame.

⑤Disconnect

Unbound your phone with app.

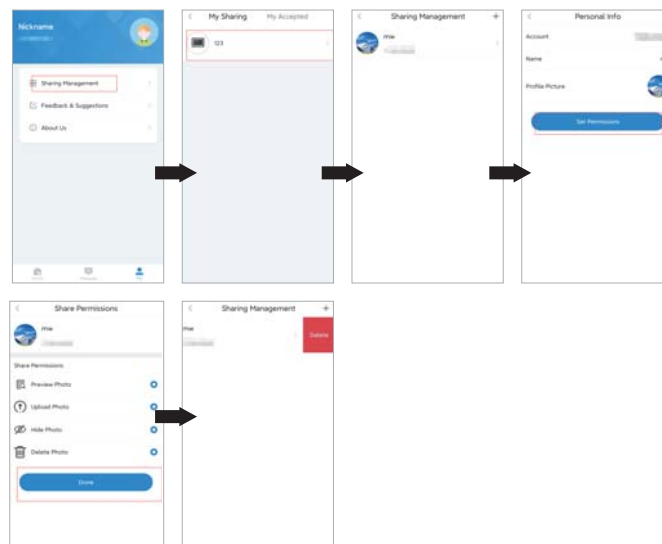
● My

① Profile

Click your profile, you can change profile, create a nickname, QR code, change your password, delete your account, or log out.

② Sharing Management

Check the device you have shared or accepted. You can click on your device and find the shared device. Tap the shared device to set the permission or swipe left and select "Delete" to unbind the user.



③ About us

View the contact email, service agreement and terms of privacy of the photo frame.

FREQUENTLY ASKED QUESTIONS

Can this frame connect to Wi-Fi networks on 5Ghz band?

Answer: No, it only supports 2.4G Wi-Fi network.

Does it has internal storage? Does it support SD card or USB?

Answer: Yes, it has 16GB internal storage. You can also use SD card or USB to expand memory (MAX 128GB, at least class 10)

Does it rotate the photo automatically to fit the frame?

Answer: Yes, the frame can be put horizontally and vertically, the photos will auto-rotate.

Do I have to keep this photo frame plugged all the time?

Answer: Yes, the frame needs to be plugging in for working.

Which photo formats does this frame accept?

Answer: JPEG, PNG, WEBP

Which video formats does this frame accept?

Answer: MP4

Can this frame be hanged on the wall?

Answer: Yes, the frame can hang on the wall with the wall mount hole on the back.

Can I cycle pictures and videos together?

Answer: Yes, you can cycle pictures and videos together.

How can I repeat one photo?

Answer: Click "Settings" → "Slide show" → turn off "Slideshow".

Where can I find my Device ID?

Answer: Click "Settings" → "Device Info" → "Device ID"

Can I control the photo order?

Answer: Yes, the frame can play your photos randomly or in Sequence. Click "Settings" → "Slide show" → "Slideshow Mode".

How do I unbind an account?

Answer: If you would like to unbind an account, please use your phone App. click "My " → "Sharing Management" → choose your device on "My Sharing" → swipe left on the user you want to unbind and select "Delete"

How do I set permissions of my friends?

Answer: Please use your phone App. click "My " → "Sharing Management" → choose your device on "My Sharing" → tap the user and set the permission.

Can I transfer photos or videos from computer?

Answer: No, you can upload photos via SD card / USB Drive/ App / Email.

How many photos can I send via App?

Answer: You can send up to 9 photos via App.

Warning:

This device complies with Part 15 of the FCC Rules.Operation is subject to the following two conditions:(1)this device may not cause harmful interference,and(2)this device must accept any interference received,including interference that may cause undesired operation.

changes or modifications not expressly approved by the party responsible for compliance could void the user's authority to operate the equipment

NOTE:This equipment has been tested and found to comply with the limits for a Class B digital device,pursuant to Part 15 of the FCC Rules.These limits are designed to provide reasonable protection against harmful interference in a residential installation.This equipment generates, uses and can radiate radio frequency energy and if not installed and used in accordance with the instructions,may cause harmful interference to radio communications. However, there is no guarantee that interference will not occur in a particular installation. If this equipment does cause harmful interference to radio or television reception, which can be determined by turning the equipment off and on,the user is encouraged to try to correct the interference by one or more of the following measures:

- Reorient or relocate the receiving antenna.
- Increase the separation between the equipment and receiver.
- Connect the equipment into an outlet on a circuit different from that to which the receiver is connected.
- Consult the dealer or an experienced radio/TV technician for help.

NOTE:This device and its antenna(s)must not be co-located or operation in conjunction with any other antenna or transmitter.

RF Exposure Statement

To maintain compliance with FCC's RF Exposure guidelines, This equipment should be installed and operated with minimum distance of 20cm the radiator your body. This device and its antenna(s)must not be co-located or operation in conjunction with any other antenna or transmitter