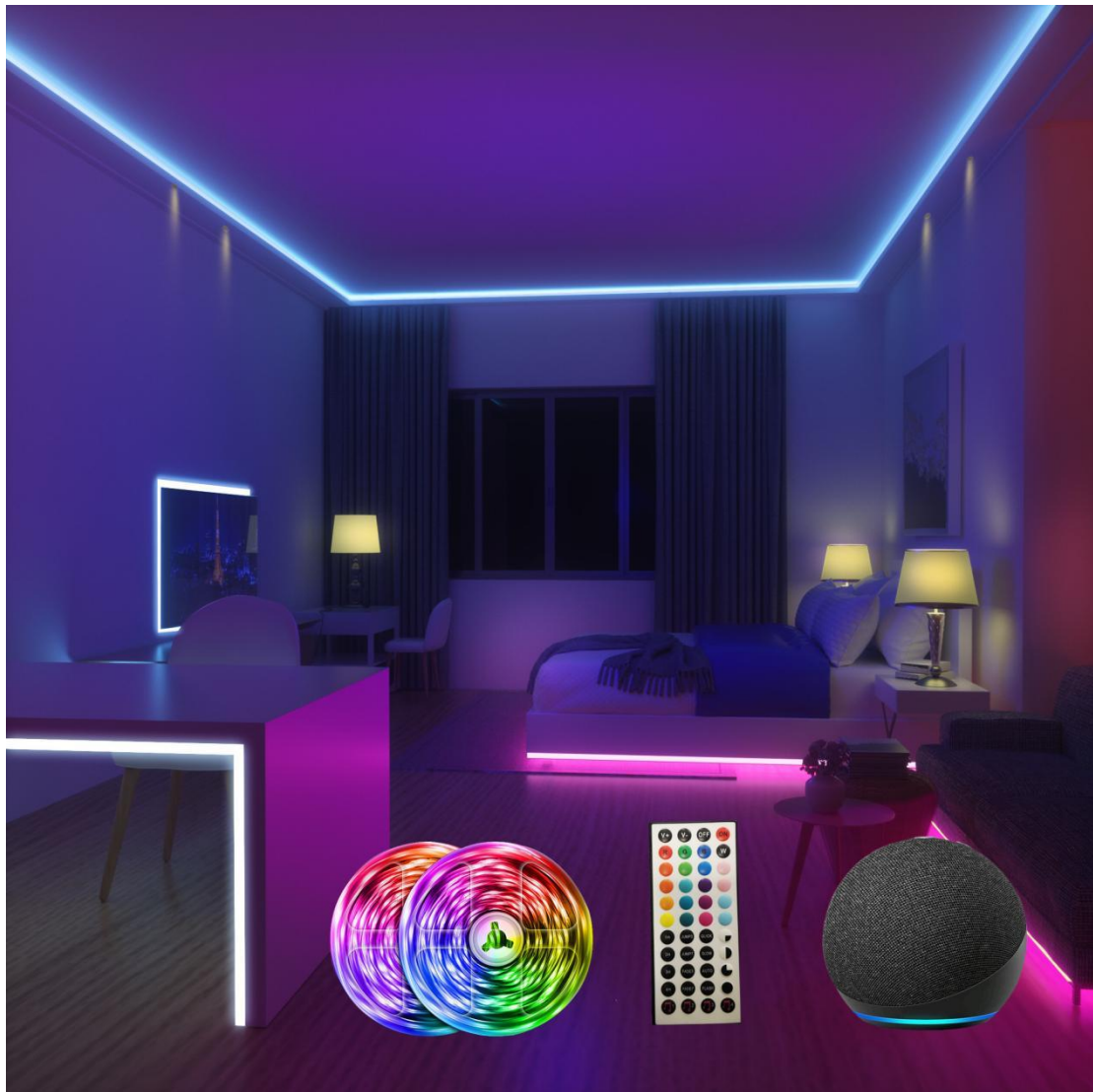


Directly Connected Alexa Light Instruction Manual



Product Name:Led strip lights

input voltage: AC110-220V

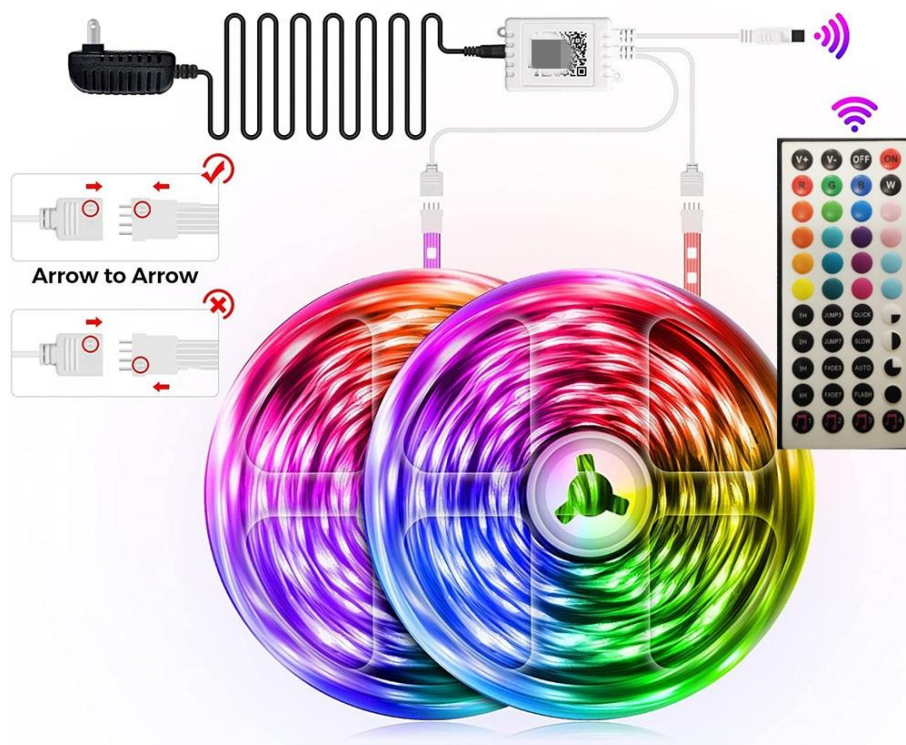
Output voltage:DC 5-24v

Maximum power: 24W

1. Strip light connection

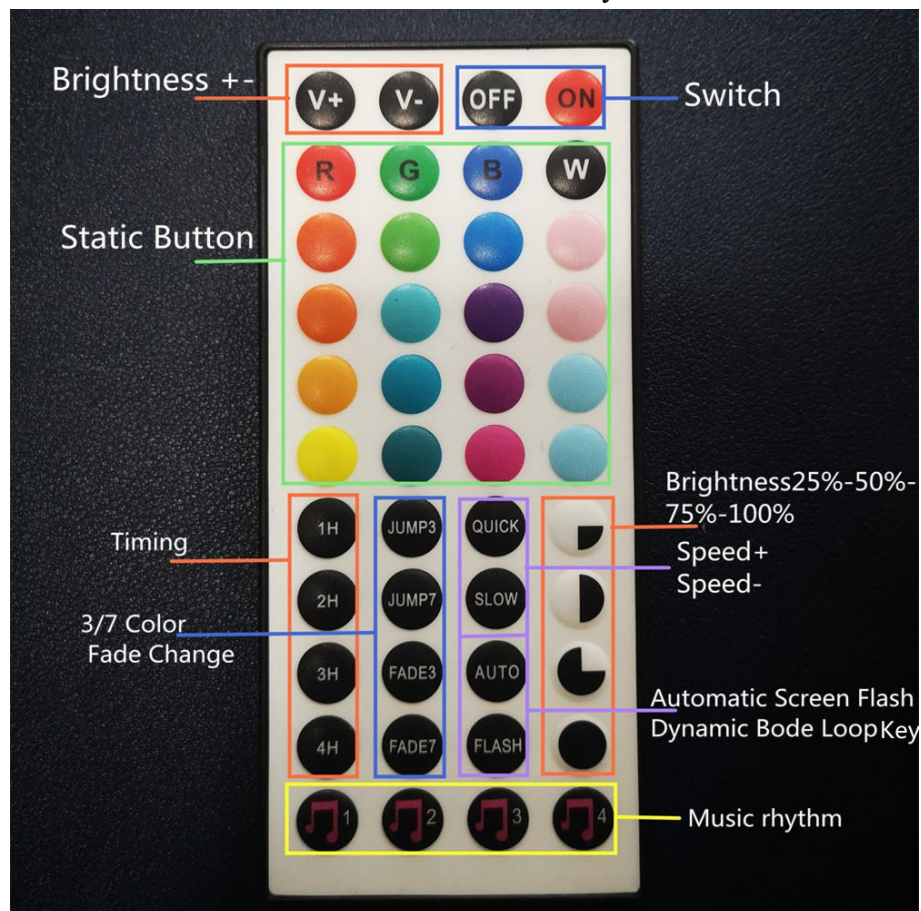
Schematic diagram of product connection (pay attention to the arrow identification of control box connector and strip light connector)

How To connect the led strip lights



2. Remote control function:

Please pull the strip light away, do not roll it for a long time (it is easy to burn out the strip light when rolling it). After connection, connect the power adapter to the patch panel or wall socket. After power-on, the strip light will light up and check whether there is any bad light. If everything is normal, use the configured remote controller to test the function. The functions of remote control keys are as follows:



3. Connect Alexa

3.1 Download “Amzon Alexa APP” in the app market

3.2 Add your Echo sound to “Amzon Alexa APP” (Echo sound after the second generation has mesh function)

3.3 Make sure the Echo stereo at home is turned on and connected to the home network (if not, please refer to the instructions for Echo stereo)

3.4 After correctly connecting the strip light, control box and power supply, unplug and plug the power connector on the control box three times, and the "ON-OFF-ON-OFF-ON" strip light lights up white and flashes to enter the distribution network state (if the strip light is in the distribution network state, the connection can be started directly):



3.5 Connecting configuration strip light

3.5.1 Configuring Strip light with Voice

---Say to Alexa speaker by voice: Alexa, is your software up to date?

---After the update is completed, say to Alexa speaker: Alexa, discover device.

After 45 seconds of searching for devices, you will be prompted to find first light.

In Devices interface, finding first light devices indicates successful distribution network.

---Click First light to control the switch, more color change.

----You can voice to the Alexa speaker and say:

“Alexa, turn on the first light”, turn on the strip light

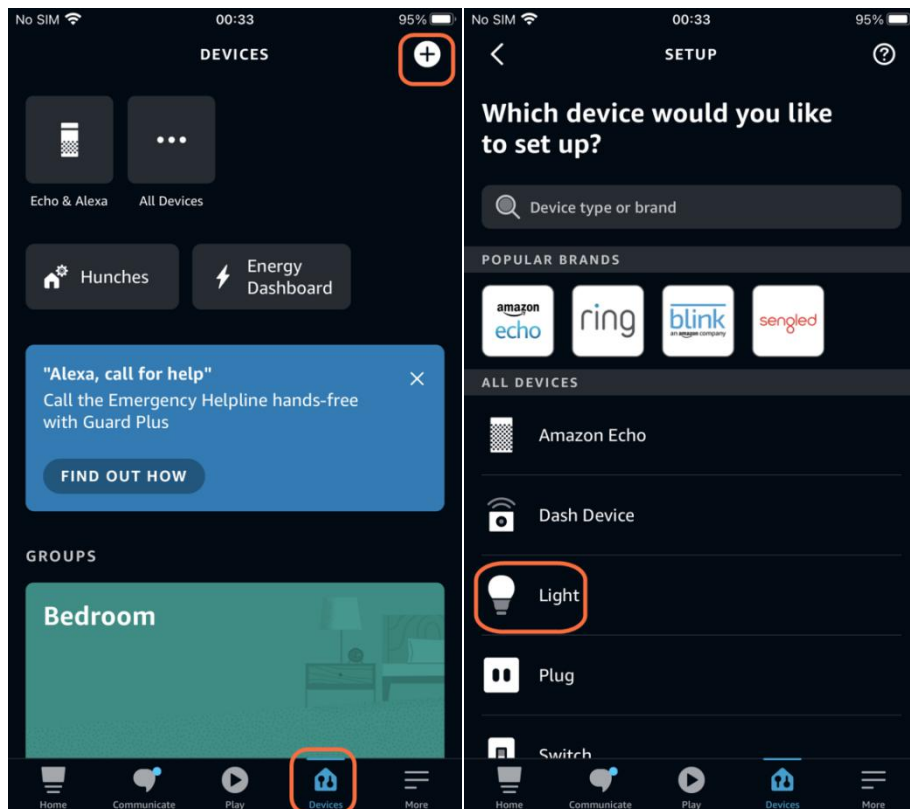
“Alexa, turn off the first light”, turn off the strip light

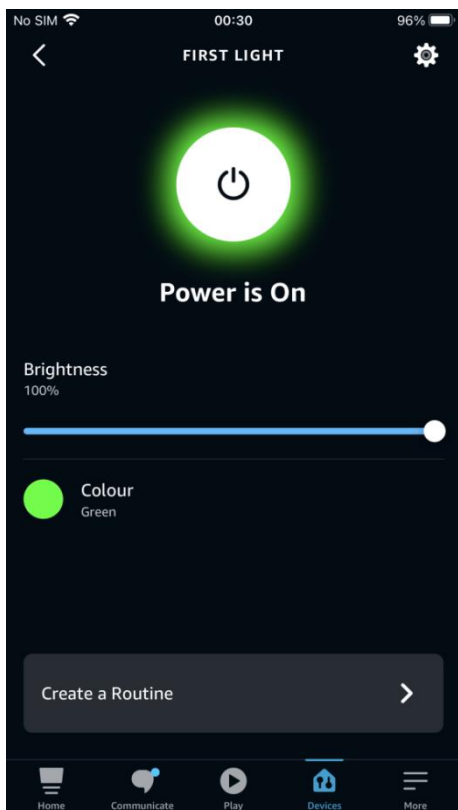
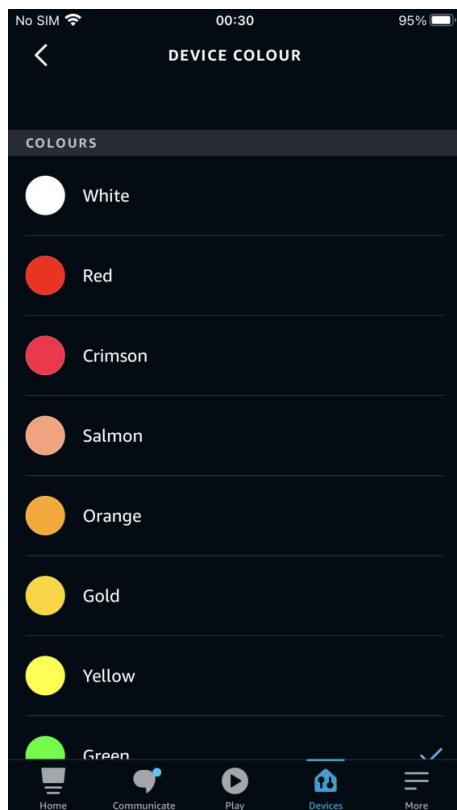
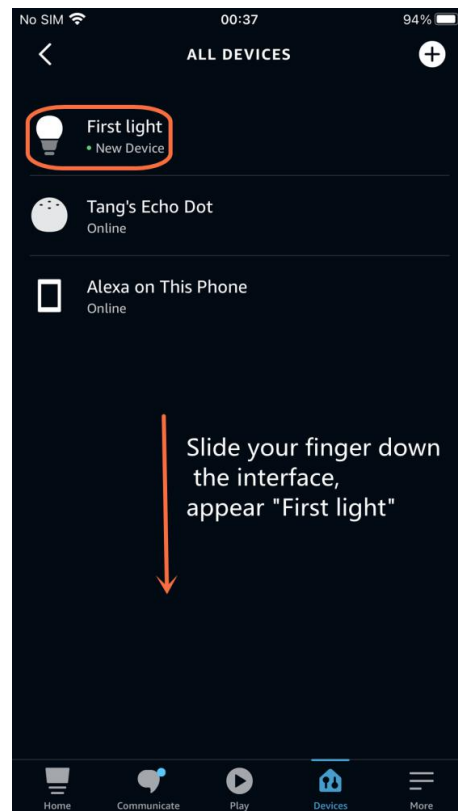
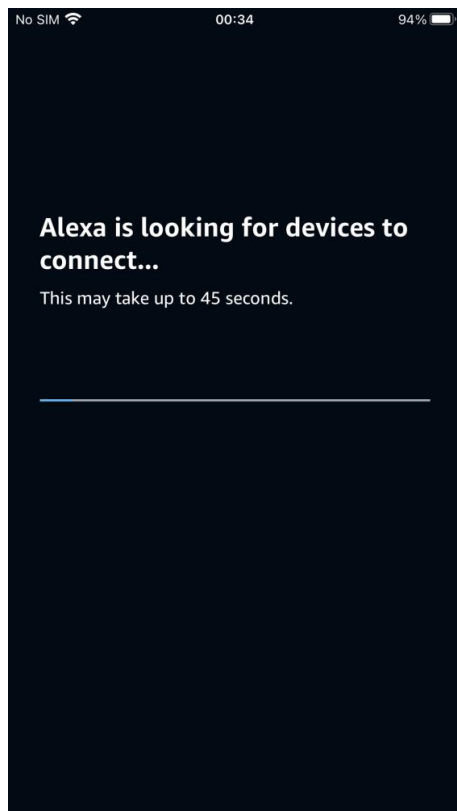
“Alexa, turn the first light to the red”, set the strip light to red

...

3.5.2 Connect the strip light by “Amazon Alexa APP”

Download the "Amazon Alexa" software in the application market, adjust the strip light to the distribution network mode according to the above "3.4" method, and select the connection strip light in the "Amazon Alexa APP" software interface





Federal Communications Commission Notice

This device complies with part 15 of the FCC Rules. Operation is subject to the following two conditions: (1) This device may not cause harmful interference, and (2) this device must accept any interference received, including interference that may cause undesired operation.

Any Changes or modifications not expressly approved by the party responsible for compliance could void the user's authority to operate the equipment.

Note: This equipment has been tested and found to comply with the limits for a Class B digital device, pursuant to part 15 of the FCC Rules. These limits are designed to provide reasonable protection against harmful interference in a residential installation. This equipment generates uses and can radiate radio frequency energy and, if not installed and used in accordance with the instructions, may cause harmful interference to radio communications. However, there is no guarantee that interference will not occur in a particular installation. If this equipment does cause harmful interference to radio or television reception, which can be determined by turning the equipment off and on, the user is encouraged to try to correct the interference by one or more of the following measures:

- Reorient or relocate the receiving antenna.
- Increase the separation between the equipment and receiver.
- Connect the equipment into an outlet on a circuit different from that to which the receiver is connected.
- Consult the dealer or an experienced radio/TV technician for help.

This equipment complies with FCC radiation exposure limits set forth for an uncontrolled environment. This equipment should be installed and operated with minimum distance 20cm between the radiator & your body.