

# Galphi

## USER MANUAL

2.5K Front & Rear & Inside  
3 Channel WiFi Dash Cam

**M2**



**REGISTER WITHIN THE FIRST 30 DAYS**

Scan this QR Code Using your iPhone or  
Andriod's Camera to start your Product  
Registration.

Or visit the link using mobile or PC/MAC:

[peztio.com/apps/product-registration](https://peztio.com/apps/product-registration)

## WATCH GUIDE VIDEOS

---

### **WATCH GUIDE VIDEOS**

Thank you for choosing a Navycrest Dash cam.  
The more familiar you are with your dash cam, the better effect you will have on the road. We therefore strongly suggest you watch our guide videos(the code & link below will re-direct to YouTube).

---

- 1** Scan the below code with your cellphone camera



- 2** Visit the below link directly via the browser

<https://youtube.com/playlist?list=PLUKmX2ADhfGEDdbRpM7ZS0hiob7-rpzqQ>



CONTACT US

### **NOT SATISFIED / NEED SUPPORT?**

Dear customer,

If you are not satisfied with our product or have issues while using our product, please feel free to contact us before you return the product to us, we will try our best to help you!

### **HEY, FIND US HERE**

OUR EMAIL ADDRESS:

[support@galphi.com](mailto:support@galphi.com)

Scan the code with your cellphone and you can email us directly!



OUR WhatsApp

Scan the code with your WhatsApp and chat with our support right now!



Typically we will reply to you in 24 hours on working day!

## INDEX

---

### **INDEX**

<u>Must Read</u>	1	<u>App Introduction</u>	30
<u>Package Contents</u>	6	Live Video Interface	30
Product Overview	7	Camera File Interface	31
Button Functions	8	Get Support from App	32
Indicator Meaning	9	<u>Playback Videos</u>	33
Screen Overview	10	<u>Video Settings</u>	35
<u>Installation</u>	11	<u>Parking Mode Settings</u>	37
Insert/Remove an SD Card	12	<u>System Settings</u>	39
Mount the Main Camera	13	<u>Specifications</u>	42
Connect Power Cable	14		
Install Rear Camera	15		
Format the SD Card	19		
Final Adjust	20		
<u>WiFi Connection</u>	23		
Download Cellphone App	23		
Authorize App Permission	24		
Connect to Camera WiFi	26		
Start to Use App Functions	29		

## MUST READ



For your quick start and make sure your M2 dash cam works properly, please read the following notice carefully.



### Power Issues

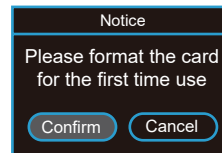
Please keep the M2 dash cam connected to the provided cigarette lighter charger for daily use, as it is not a battery-powered camera. If your car does not have a cigarette lighter port, please **contact us** for a compatible USB TYPE C cable and connect to the power port that can reach 5V/2A output, otherwise, issues may occur to this dashcam.



### Memory Disk Included

A 64GB SD card is included in this package. The SD card is already inserted into the M2 dashcam by default, if yours does not have an SD card, please reach us for replacement.

For the first time boot up, M2 dashcam will prompt 'Please format the SD card', please select 'Confirm' and single press OK BUTTON **OK** or connect the app to process the format then the camera will start recording automatically.



If you consider the provided SD card's capacity is too small, you can upgrade it with a larger one from Amazon. This M2 dashcam can support up to 512GB memory, but it should be a SAMSUNG or PNY Class 10, U3 speed Micro SD card. We recommend you search **B09WB3D5GQ** on Amazon.

Or use the Amazon App or your cellphone camera to scan the code to purchase the larger capacity SD card for M2 dashcam storage extending.



## MUST READ

---



### WiFi Connect

The WiFi of M2 dash cam will turn on as the dash cam power on, please join the WiFi hotspot of the M2 dash cam following the information bellow:

WiFi Name: **Peztio-M2-\*\*\*\***

Default Password: **12345678**



### Parking Mode

If you need to use the 24-hour parking monitoring function, you can get a Type C hardwire kit through our ongoing promotion. Please email or text us via email address or WhatsApp.

Or buy separately at the link:

<https://www.amazon.com/dp/B09SPN811C>

OPTIONAL



### Stop Recording in Parking Mode?

Some customer found their M2 dash cam stops recording even with parking mode engaged, that's because when the voltage of your car's battery drops, the hardwire will cut off the power supply of the M2 dash cam to ensure that you can start the ignition the next time you enter the car again. This is a function to protect your battery to avoid the trouble of your car not starting. In other words, the larger the battery capacity of your car, the longer it can support the M2 parking mode. For ordinary cars, their battery capacity can support the M2 dashcam recording for more than 10 hours. If you drive every day, you won't have to worry about this issue.

## MUST READ



### WiFi Disconnect?

This issue may happen to iOS Carplay / Android Auto users- by default, the mobile phone prioritizes the connection with Carplay or Android Auto, making it challenging to establish a connection with the camera. To successfully connect the camera, please follow these steps:

1. Disable your mobile phone's Bluetooth.
2. Disconnect from any existing WiFi connections.
3. Turn off your car and ensure your mobile phone is no longer linked to Carplay or Android Auto.
4. Restart your car and then connect the camera with your phone.

Generally, it's advisable to maintain the priority connection with Carplay or Android Auto. The dash cam will continue recording automatically without needing to connect to your cellphone's WiFi, functioning as long as it has a power source.



### Connect Failed?

If you can successfully join the M2's WiFi hotspot but the Peztio app just prompts 'Connect Failed', please trouble shoot as following:

1. **VPN:** Is your phone's VPN turned on? If yes, please turn it off temporarily.
2. **CarPlay:** Is your phone connected to CarPlay? If yes, please fully disconnect it.
3. **Local Network Access:** Ensure that the Peztio app has local network access enabled in your phone's settings.
4. **Restart Your iPhone:** Restart your phone and then try reconnecting to the camera's WiFi as so many customer said this can help after they update their iPhone to iOS 18. Many customers have found these steps helpful, especially after updating to iOS 18. I recommend giving them a try, and I'm confident this will resolve the issue.
5. **Reset Network Settings:** Go to Settings > General > Transfer or Reset iPhone > Reset > Reset Network Settings.

If your issue is still with all above done, please contact us for help!

## MUST READ

---



### Check the Cigarette Lighter Port

Please check if your cigarette lighter works properly before you install the camera. The cigarette lighter should supply and disconnect power as you turn on and off your car. Situations you need to pay attention to:

1. There is no cigarette light in your car(no way to power the camera).
2. The cigarette lighter port has power even if you have to turn off the car (it will drain your battery).
3. The cigarette lighter port is defective and has no power.
4. The cigarette lighter port had been taken up by other devices.

If you are in any of the above situations, please get in touch with us for an alternative power option(USB cable or hardwire kit).



### No internet?

Once you connect to Peztio-M2-\*\*\*\* WiFi, it will say 'No internet connection', which is fine and please select 'Keep trying wifi'. But you can not use the internet data at this moment, if you want to use the phone network,(for music, navigation etc.) just disconnect the camera WiFi. **The camera will continue to record even when it is not connected to your cellphone. In other words, you don't need to connect to the dash cam WiFi all the time.**



### No Rear Image

If the rear camera video can not show up when you using the app, please make sure the socket is completely inserted into the main camera, if you have not completely insert the plug into the main camera, the rear image will show black screen, **contact us** if it still not working.



## MUST READ



### Constantly on & off

If the recorded videos are freezing, lagging, or the M2 only recording video for a few seconds then power off, this is the SD card issue(defective / low speed card), NOT the camera issue. Please format the SD card to have a try (**see page 19 or 22**). If the issue remains after you get the SD card formatted, please replace the SD card with a new one as it may reach its life span after so many times erasing and loading data by the M2 dashcam. If you have no idea how to get resolve, please feel free to contact us.

Find us here for any issues, we will reply in 24 hours!



[support@galphi.com](mailto:support@galphi.com)

Scan the code with your  
cellphone and you can  
email us directly!



Scan the code with your  
whatsapp and you can  
chat us directly!

## PACKAGE CONTENT

### PACKAGE CONTENT



M2 Dashcam



64GB SD Card Included



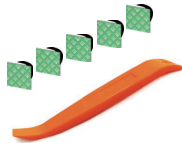
Suction Cup



Car Charger



Rear Camera



Wiring Tools

User Manual

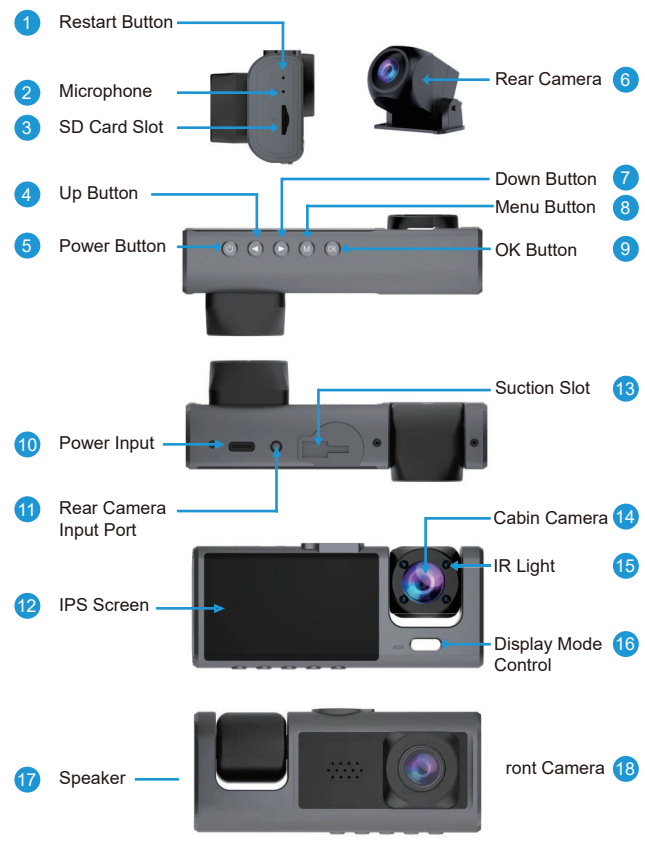
Warranty Card



1. 64GB SD card is included in Package, if you consider the provided card's capacity is too small, you can get a larger one from Amazon. We suggest inserting a SAMSUNG / PNY Class 10, U3 speed micro SD card(up to 256GB) into this M2 dashcam. To make a purchase, please simply search for **B09WB3D5GQ** on Amazon.

2. If there is no cigarette lighter port in your car, please email us [support@galphi.com](mailto:support@galphi.com) to get a USB C cable from us.

**PRODUCT OVERVIEW**



## PACKAGE CONTENT - BUTTONS FUNCTION

### UNDERSTANDING BUTTONS



#### POWER BUTTON

1. Long Press- to Turn ON/OFF the camera.
2. Press Once- to Turn ON/OFF the screen.



#### UP DIRECTION

1. Press Once- to LOCK the video while recording.
2. Press Once- to Scroll Up while operating with menu settings.
3. Press to Scroll Up in the camera select list from the Front, Inside and Back camera(corresponding F, I, B) in playback mode.
4. Press to Scroll Up in the file select list from the normal video, Locked video and photo in playback mode.
4. Press Once- to Scroll to Previous video while in playback mode video list.



#### DOWN DIRECTION

1. Press Once- to Enable/Disble the audio recording in video Mode.
2. Press Once- to Scroll Down while operating with menu settings.
3. Press to Scroll Down in the camera select list from the Front, Inside and Back camera(corresponding F, I, B) in playback mode.
4. Press to Scroll Down in the file select list from the normal video, Locked video and photo in playback mode.
4. Press Once- to Scroll to Next video while in playback mode video list.



#### MENU BUTTON

1. Long press for 3s- to enter Playback Mode
2. Press Once- to enter the video setting menu in video mode
3. Press Once- to enter the system setting menu when in video settings

PACKAGE CONTENT - BUTTONS FUNCTION



- 4. Press Once- to exit the setting menu when in system setting menu.
- 5. Short Press in Playback Mode- to come back to the previous level menu/ exit playback mode.
- 6. Long-Press for 3s -Call out the 'delete/lock' option when a video is selected in play back mode.



OK BUTTON

- 1. Press Once - to Enter / Confirm Specific Settings while in Menu Settings.
- 2. Press Once - to Start/Stop Video Recording in video mode.
- 3. Press Once - to come to the next level menu in playback mode.
- 4. Press Once - to Play/Pause Current Video while in video select list in playback mode.



DISPLAY MODE BUTTON

- 1. Press Once- to Switch the screen display mode from PIP Mode, Front Only Mode, Cabin Only Mode, Rear Only Mode.

INDICATORS STATUS



Solid Blue Light  
Camera is powered.

+

Blinking Blue Light  
Camera is recording

Indicator Goes off  
Camera is powered off.

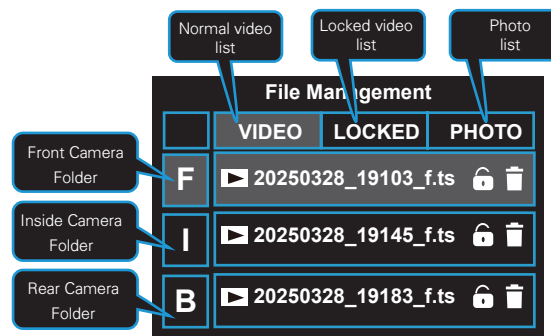
## SCREEN OVERVIEW

### VIDEO MODE



 Hold the MENU button  for 3s in video mode to enter playback mode

### PLAYBACK MODE



## INSTALLATION



### POWER REQUIREMENT

As this M2 dash cam is a 3 channel system with a high resolution of up to 2.5K+1080P+1080P, along with WiFi function, it requires a more powerful power source to drive this system(compared to a normal 5V/1A). We strongly recommend you use the car charger that comes with this package. If your car does not have a cigarette lighter port, please **contact us** to get a TYPE C cable and insert it into a 5V/2A USB port. If you use a normal 5V/1A port to power this camera, issues may occur.

## INSTALLATION

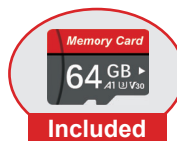


Our default settings of the M2 dash cam allow you to use the camera as soon as you get it without modifying any settings. You can also scan the code on the right to watch the installation video guidance for your M2 dash cam(will redirect to YouTube).

### SD Card Installation / Removal

1

A 64GB SD card is included in this package. The SD card is already inserted into the M2 dash cam by default, so you can skip this step directly. If yours does not have an SD card, please **reach us** for an SD card replacement.

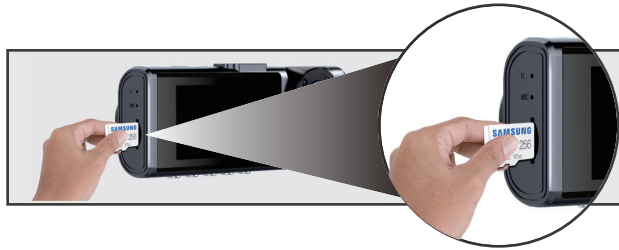


## INSTALLATION - INSTALL MAIN CAMERA

---

### **1** *Install the SD Card*

Turn off the M2 before inserting the SD card. Then place the brand logo facing the Screen side of the camera. Then insert the memory card halfway in first. Then use the card needle (package included) to push the card all the way inward until you hear a click sound then the SD card is locked in place.



### **2** *Remove the SD Card*

To remove the SD card, please gently push its edge inward until it clicks first, after it pops out, please pull it out of the slot.



1. Never remove the SD card while the camera is on, the camera will stop recording immediately and may cause video damage.
2. Please note that every SD card has its life span, when your M2 keeps turning on/off frequently and the videos are not saved, your SD card may reach its life span, please replace a new SD card.



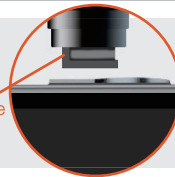
## INSTALLATION - INSTALL MAIN CAMERA

### **3** *Assembly of the suction mount and main camera*

Combine the dashcam with the suction mount, The first time you put it on, it will be tight, don't worry, just push it to right.



Align the tenon of the suction mount to the slot of the M2 dashcam, Insert the tenon part completely into the port, and then push right to the end ( *please pay attention to the direction of the tenon*).



### **4** *Stick it to your windshield*

**a** Please use wet & dry tissues to repeatedly wipe the place you choose to install the recorder in order to clean the dust particles on the windshield and the grease evaporated.

**b** **Installation Area:** Most of our customers choose to install their M2 next to the rear view mirror and close to the passenger side. Park your car in a safe and well-lit area before you start the installation.



## INSTALLATION - INSTALL MAIN CAMERA

**C LOCK IT IN PLACE:** Remove the protective plastic film from the suction cup before installing it. Fixed the suction cup: Press and hold the cup firmly attached to the windshield to ensure that the air between the windshield and the cup is expelled, then lock the knob clockwise to lock it in place.



### **5 Connect the Power Cable**

Use the power cord to connect the TYPE C Power Port of the product to the car's cigarette lighter socket with the package to run the cable through the A-Pillar. The cigarette lighter port usually is in the glove box of your car. You can use the wiring straps to help you run your cable on the front windscreen.

Stick it on the windscreen, and fasten the wire harness underneath.



### **i FOR YOUR SAFETY**

- For the car has side curtain airbags, please run the cable along the window carefully. Please make sure your cable won't obstruct the airbags take effect.

## INSTALLATION

### Rear Camera Installation

2

**i** There are 2 ways for you to install the rear camera, see the below picture, you can choose one of them as your preference. This rear insallation is optional, the front camera can also work without rear cam.

Method 1: Above the license plate  
near by the license plate lamp



Method 2: Mount on the car's  
back roof(inside the car)



## INSTALLATION - INSTALL REAR CAMERA

---

### **1** *Stick the rear camera*

Method 1: Above the license plate near by the license plate lamp

#### ● **Remove the Panel**

Remove your trunk's interior panel to expose the car's rear wiring chambers. Pop open your trunk and look for a solid interior panel covering the opposite side of your license plate mounting area, then insert a trim removal tool or other thin devices behind the panel and pry it off.



#### ● **Snake the cable**

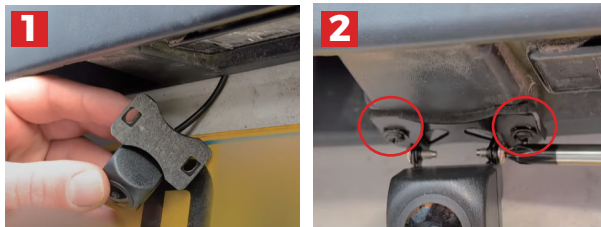
Use a trim removal tool to pop out the tailgate trim, then run the cable from the outside of the car into the trunk of your car.



## INSTALLATION - INSTALL REAR CAMERA

### ● **Mount the rear camera**

The rear camera is included with a 3M tape to stick the rear camera to place first, and then reinforce the installation with the included screws.



### Method 2: Mount on the car's back roof(inside the car)

### ● **Installation Area**

Please install the rear camera in the upper middle of the rear windshield in the car. This will make it easier to arrange the wiring harness and will not obstruct you from viewing the rear through the rearview mirror.



### ● **Clean the Area & Stick the Electrostatic Film**

Please use wet & dry tissues to repeatedly wipe the place you choose to install the recorder in order to clean the dust particles on the windshield and the grease evaporated. Then stick the electrostatic film on the place.

## INSTALLATION - INSTALL REAR CAMERA

### ● **Stick it in Place**

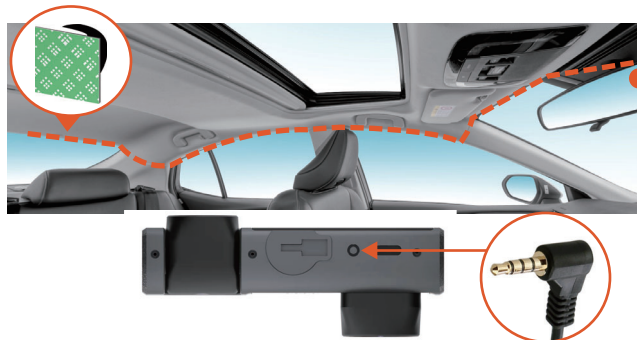
Remove the film of the glue then you can stick it in the mounting area you desire. **Please keep the sticky pad upward, otherwise, the rear videos you record will be upside down.**



### Connect rear camera to main camera

3

Run the rear camera cable as in the picture below, the rear camera cable will go through the C-pillar, B-pillar, and A-pillar of the car body, and finally reach the main lens. You can use the included crowbar to tuck the wire into the interior sealing strip to hide the wire. The wiring straps to help you run your cable on the rear windscreen.



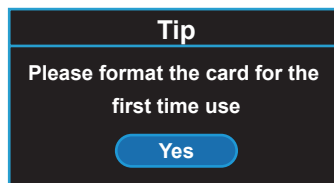
### Final Setup & Test

4

#### **1** Start & Format the SD Card

Start the ignition of your car, and see if the M2 dash cam boots up normally.

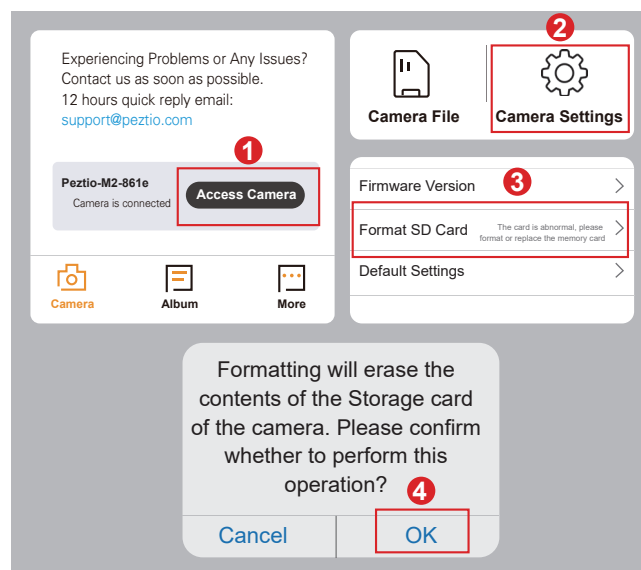
For the first time boot up the M2 dashcam will keep saying 'Please format the SD card', just press OK BUTTON  , and this M2 dashcam will format the SD card itself and start recording.



*Alternatively, you can connect to the Peztio WiFi to precess the format following the steps below:*

- Connect Peztio APP and Access Camera (See Page 23 ).
- Click the "Camera Settings"
- On camera settings page, scroll down until you see "FORMAT SD Card", then choose "Format SD Card", and click "OK" to confirm to format the memory card.

## INSTALLATION - FINAL SETUP & TEST



### ***Keeps telling 'Please insert an SD card'***

- For most situations, the M2 dashcam will auto-start recording after it finishes the SD card format. But if you insert a defective SD card or a low-speed card that can not reach Class 10 U3 speed, it will keep prompting 'Please insert an SD card'. Please replace an SD card that works well and reaches Class 10, U3 speed(512GB Max) in this situation.
- If you have no idea how to get this error resolved, please **contact us** for help: ***[support@galphi.com](mailto:support@galphi.com)***



## INSTALLATION - FINAL SETUP & TEST

### **2** *Adjust the angle*

Adjust the angle of the front and rear camera to make sure that the camera can capture the full image and is not obstructed by window tint or any other objects, we recommend you connect the M2 dashcam to your cellphone app first, then adjust the angle of each camera with reference to the live video.




### **3** *Date & Time Settings*

After you successfully connect your cellphone with the dashcam via WiFi, M2 dashcam will auto sync the time with your cellphone, and you don't need to set the time via the dash cam yourself.

## INSTALLATION - FINAL SETUP & TEST

---




### **4** *Adjust the Screen Display Mode*

M2 dashcam will show the videos from 3 channels by default, you can Single Press the DISPLAY MODE BUTTON (see page7)  to change the screen to display mode from front only, inside only, rear only and 3 channel mode.

### **5** *Format SD Card Regularly*

To keep the SD card clean and smooth operation, we recommend you SD card via the dashcam app every 2 weeks. Steps are below:

#### ***Format by operating the camera***

- > Power on the camera.
- > Single press MENU button  to enter 'Video Settings' Menu.
- > One more press MENU button  to enter 'System Settings' Menu
- > Press DOWN button  to scroll down and select 'format'
- > Press OK button to process the format and wait for it.

#### ***Format by operating Peztio App after connected***

Please kindly check the page 19 of this manual to process the format from app.

## WIFI CONNECTION



## THINGS YOU HAVE TO KNOW

### **WiFi Function**

M2 dashcam has built-in WiFi module, so you can use your mobile phone to wirelessly pair with the camera through the WiFi, and instantly get the video from the dash cam. Apart from that, you can easily watch the live feed, view, download and share videos with family and friends. In summary, just like you connect a Bluetooth speaker to your smartphone for wireless music playback, the dash cam uses a WiFi signal (instead of Bluetooth) to pair your smartphone to the M2 dashcam in the same way.

### **Does not Support Monitor Remotely**

M2 dashcam does NOT support remote monitor. Because the WiFi signal will not be turned on when the car is not powered on and the valid range of WiFi is 10FT. Therefore, the remote monitor function cannot be realized if both above conditions are not met.

### **Does not Have to Connect Phone All the Time**

M2 dashcam will auto start recording and save the videos in the SD card once it is powered on. You don't have to connect the M2 dashcam all the time while you are driving. In reverse, you are not able to use the navigation or listen to the music from online app if you connect the M2 dashcam with your cellphone. So you don't have to connect the M2 dashcam with your cellphone all the time.

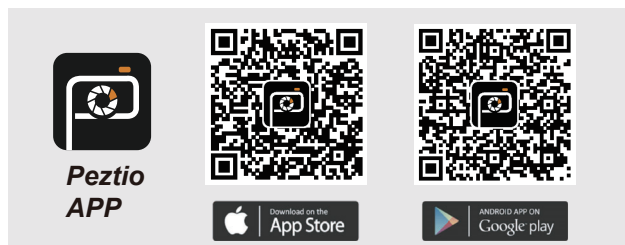
## CONNECT TO APP

---

### Download 'Peztio' app

1

Please scan the QR code of the relevant version below to download the APP and install it.



Or search for 'Peztio' in App Store or Google Play Store to download and install it on your phone.



### **Remain Power Supply**

Please remain the M2 connected to the power while you are operating the WiFi function, otherwise the dash cam WiFi will become offline.

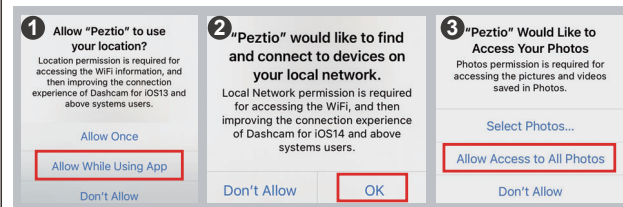
### Authorize App Permissions

2

Just open the 'Peztio' app you've downloaded, and authorize the permissions as below. When opening the app for the first time, please make sure to authorize the App with album, location, WLAN & cellular data, otherwise the Peztio app won't work correctly.

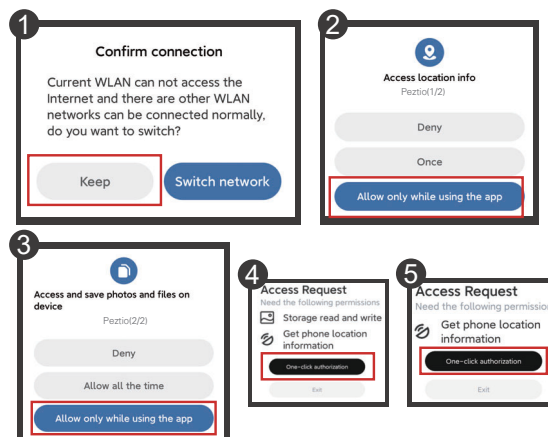
### **Reminder for iOS Users**

If you get these notification windows while using the APP, ensure you choose "Allow" or "OK"



### **Reminder for Android Users**

Please choose "Keep", "Allow" or "Authorization" when these prompts appear.

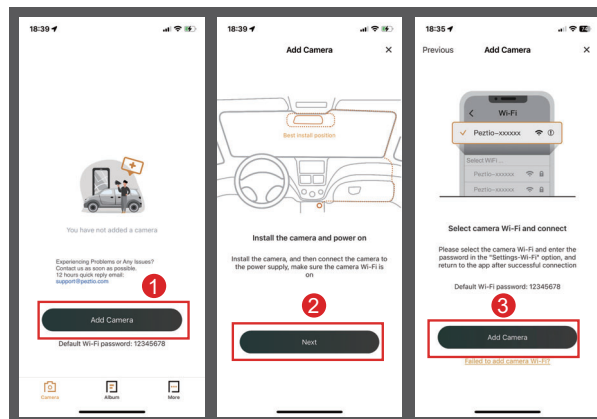


## CONNECT TO APP

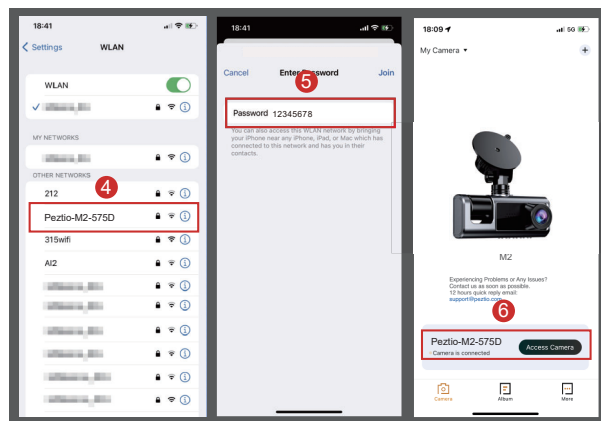
### Connect to the WiFi

3

- When you successfully turn on the app, just simply press 'Add Camera' > 'Next' > 'Add Camera'  
**1** **2** **3**
- Then it will jump to the WiFi setting of your cellphone. Simply join the WiFi of M2 dashcam by going into your iPhone or Android Settings > WiFi > **Peztio-M2-\*\*\*\***  
**4**
- Then enter the default password: **12345678**. And join the network.  
**5**
- Press 'Access Camera' to enter the live video of M2 dashcam  
**6**



## CONNECT TO APP



### Keep Trying Wi-Fi

Once you connect to Peztio-M2-\*\*\*\* WiFi, it will say 'No internet connection', which is fine and please select 'Keep trying wifi'. If you want to use the phone network, just disconnect the camera WiFi. The camera will continue to record even when there is no WiFi connected.

The Wi-Fi network "Peztio-M2-5dfc" does not appear to be connected to the Internet

Do you want to temporarily use cellular data?

Use Cellular Data

Keep Trying Wi-Fi

## CONNECT TO APP

---



### Disconnecting issue for Carplay / Android Auto users:

This is because by default, the mobile phone prioritizes the connection with Carplay or Android Auto, making it challenging to establish a connection with the camera. To successfully connect the camera, please follow these steps:

1. Disable your mobile phone's Bluetooth.
2. Disconnect from any existing WiFi connections.
3. Turn off your car and ensure your mobile phone is no longer linked to Carplay or Android Auto.
4. Restart your car and then connect the camera with your phone.

Generally, it's advisable to maintain the priority connection with Carplay or Android Auto. The dash cam will continue recording automatically without needing to connect to your cellphone's WiFi, functioning as long as it has a power source.



## Start to Use App Functions

4

Once your cellphone successfully join the WiFi hotspot of M2 dashcam, please simply get back to the 'Peztio' App, then the app will take seconds to identify your dashcam information and get it finished, once it is finished, you will see your dash cam name and able to click 'Access Camera' to start data transfer with your camera.

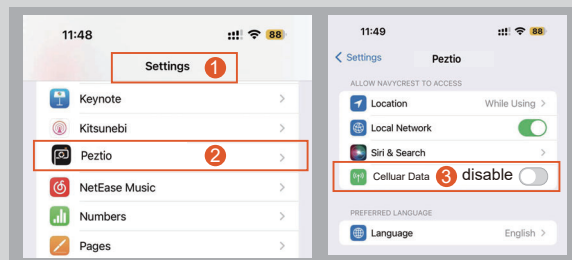
**WATCH GUIDE VIDEO**

Please scan the code to watch the M2 Dashcam WiFi connection video(will redirect to YouTube)

**CAN'T SEE PREVIEW VIDEO?**

The cellular data may cause the live feed not to be viewed. Please following the steps below to get it fixed

1. Go to the 'settings for your iphone'
2. scroll down until you find out the 'peztio'
3. click in peztio and disable the cellular data options



APP INTRODUCTION

Live Video Interface1

Exit: Come back to main interface of the Peztio app and stop data transfer.

● REC  
Recording Now  
● Recording paused  
Recording Stopped

Front Camera Video

Current Date & Time

Change Camera:  
Click to change displaying the video from front camera and rear camera.

Click here to take photos

Camera File:  
Click here to check all the recorded videos that are saved on the SD card, you can playback or download the videos here.

11:48

50

Peztio-M2-9e90

REC

2024/06/20 11:48:22

Camera File

Camera Settings

Camera Name

Click to flip the current screen left or right. This function can only be used when displaying rear/inside camera.

MIC ON  
MIC OFF

Click here to start/stop recording

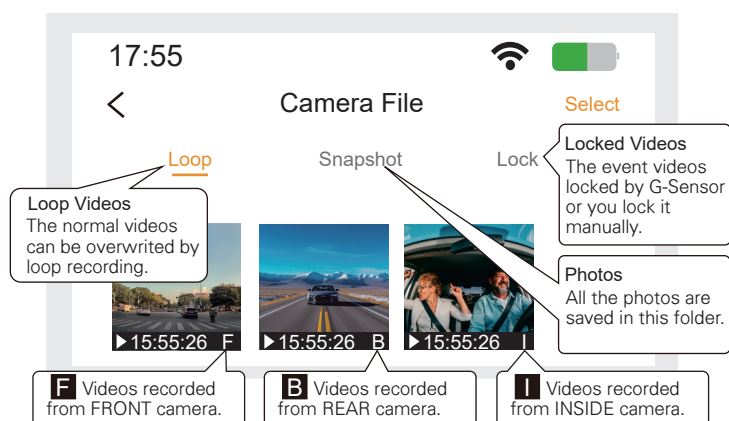
Camera Settings:  
Click here to adjust your camera settings such as format the SD Card etc.

30

## Camera File Interface

2

By clicking the 'Camera File' from the last interface, you can playback and download the videos the M2 dashcam recorded. **Please note that different videos are saved in the different folders, if you want to check the accident videos or the video you locked, please click the 'lock' folder to check.**

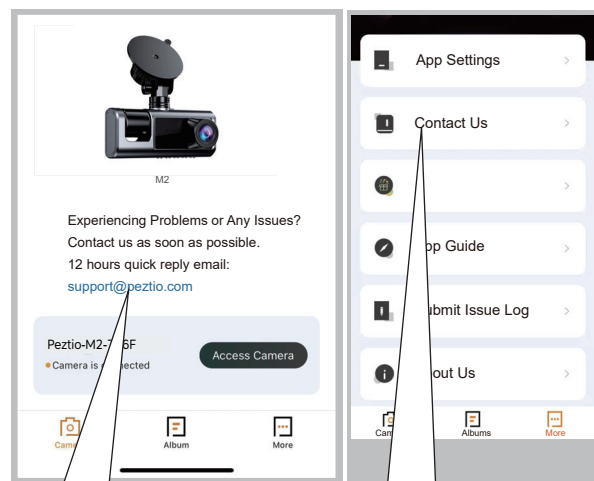
**FOR YOUR BEST EXPERIENCE**

- (1) Please download the videos if you need a more detailed and smoothly video, the preview resolution is at only 480P. For a real 2.5K front video experience, please use a monitor that support 2.5K resolution.
- (2) The downloaded videos / photos will be saved in your local albums.

## APP INTRODUCTION

### Get in Touch with Our Support From the App **3**

If you have any issues or need from our after-sale support, there are 2 ways for you to get in touch with us in 'Peztio' app. Typically we will reply to you in 24 hours on working days!



You can click this email address from the main interface of 'Peztio' app, then it will jump to the email app of your cellphone.

You can also click the 'Contact us' from the 'More' page. Then it will jump to the email app of your cellphone.


PLAYBACK VIDEOS

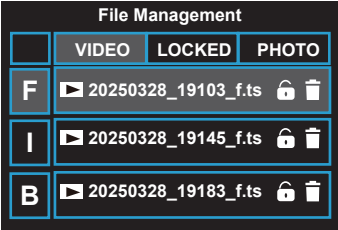
There are 3 methods for you to choose playing back the videos.

Playback Videos from App 1





As mentioned in the previous chapter, you can play back videos by entering the Camera File interface of Peztio App. I won't go into details here. For details, please check pages 31 of this manual.

Playback Videos from Camera Playback Mode 2

You can also hold the MENU button  for 3s in video mode to enter the playback mode of M2 dash cam, in playback mode, you can select & play the files you want.



Button Function

 <ul style="list-style-type: none"><li>● Come to Next Level Menu.</li><li>● Play the selected video.</li></ul>	 <ul style="list-style-type: none"><li>● Move the selector upward.</li><li>● Come to last video.</li></ul>
 <ul style="list-style-type: none"><li>● Come to Previous Level Menu.</li><li>● Exit the playback mode (with Continuous press)</li><li>● Call out the 'Lock/delete' menu (Long press when a video is selected).</li></ul>	 <ul style="list-style-type: none"><li>● Move the selector downward.</li><li>● Come to next video.</li></ul>

## PLAYBACK VIDEOS

### Playback Videos via Your PC

3

- 1 You can remove the SD card from M2 dashcam and insert it to computer directly (if your computer doesn't have memory slot, then you need to purchase a 'Micro SD Card to USB Adapter').



- 2 After you insert the SD card to your computer, please look for the added flash drive. You should be able to see drive named 'CarDVR-M2'.

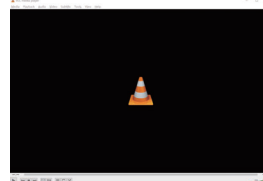


- 3 When you locate the added flash drive 'CarDVR-M2', double click in it, then you will see a folder named 'Novatek', there are 6 folders, you can find the files according the folder name.



#### RECOMMEND VIDEO PLAYER

The video format of M2 dashcam maybe not supported by your computer original video player. We recommend you download a VLC Player to play the videos. You can get it free at [www.videolan.org](http://www.videolan.org)



## VIDEO SETTINGS

### VIDEO MODE SETTINGS

To adjust your video mode setting, please power on the M2 dashcam first, then Single-Press MENU BUTTON  to enter the video setting menu, the following are the options from video setting menu.

#### Resolution

Choose the resolution of front camera according to your needs. The higher resolution you choose, the more storage space it take up.

- 2.5K(Default)
- 1080P

#### Loop Recording

The duration of each recorded video will be saved in the normal video folder according to the loop recording time you set. When the capacity of the normal video folder reaches 70% of the total, new loop recording files will automatically overwrite original loop recording files. After this function is enabled, the video file will automatically overwrite the loop, so as not to stop recording during the driving process.

- 1 minute (Default)
- 2 minutes
- 3 minutes
- 5 minutes



This function can free you from deleting the video manually once the SD card is full. However, this function may fail when you inserted a low-speed card into the dash cam, please insert a Class 10 U3 speed Micro SD card (not larger than 512GB) to make sure this function can work properly.

## VIDEO SETTINGS

---

### G Sensor (Collision Sensing)

G-Sensor is a 3-axis impact gravitational accelerometer which is designed to detect physical and gravitational forces on the camera.

**While Video is Being Recorded:** In the event when G-Sensor is triggered due to physical or gravitational impact force on the camera, the current loop cycle length of video file will be locked so it will NOT be deleted by loop cycle function.


- Off
- Low (DEFAULT)
- Medium
- High

### Rear Camera Mirror

With this option you can flip the rear camera video left and right from the screen display, but the capture video will not change.

- Off (DEFAULT)
- On

### Sound Recording

The M2 dashcam supports voice recording, you can activate it on camera settings to record the voice or turn it off to prevent the voice from being recorded. You can also single press  to turn on/off this microphone right away.

- On (Default)
- Off

### Date Stamp

You can choose whether to put the date watermark on the video.

- Off
- Date and Time (Default)

### Rear Camera Flip

With this option, you can flip the rear camera video upside down from the screen display and output it as a video. This option is for the customer who accidentally installs the rear camera upside down.

- Off (DEFAULT)
- On



## VIDEO SETTINGS

### Cabin Camera Record

For your privacy needs, you can disable the cabin camera from recording.

- On (DEFAULT)
- Off

### IR Light Control

This function is to control the IR night of the inside camera, if you turn it on, it keeps on all the time, if you turn it to auto, it will auto on while it detects the light is weak.

- Auto (DEFAULT)
- On
- Off

## PARKING MODE



### TYPE C HARDWIRE KIT REQUIRED

This 3 feature becomes accessible within camera settings only when the camera is powered by the hardwire kit. To enable this function, you'll require a Type C hardwire kit, available for separate purchase at

<https://www.amazon.com/dp/B09SPN811C>

Alternatively, you can contact us to obtain a free hardwire kit for

### STOP RECORDING EVEN WITH HARDWIRE KIT?

When the voltage of your battery drops, the hardwire will cut off the power supply of the M2 dashcam to ensure that you can start the ignition the next time you enter the car (low voltage protection). So this stop recording issue is a matter of the capacity of your car battery, not a camera malfunction.

## VIDEO SETTINGS

---

### Parking Monitor

This functionality is specifically intended for use when your vehicle is parked. Once you've installed the dedicated hardwire kit and established the connection, you can activate the parking mode via the Peztio app. While your car is parked, if the camera detects a collision, it will activate automatically, record for one minute, and then deactivate. The resulting video will be safeguarded as an emergency file, preventing it from being overwritten by the loop recording feature.

- ☐ Off(Default)
- ☐ Low
- ☐ Middle
- ☐ High

This feature only becomes available within camera settings when connected to the hardwire kit. M2 dash cam will execute the time-lapse record as a priority when you turn on this function and the time-lapse record together.

### Parking Mode/24-Hr Time Lapse Record

This feature is designed to work while your car is parked. After installation of dedicated hardwire kit and connected, you can turn on this function on video mode menu. When you turn off your car, the camera will record 1 fps / 3fps per second video until you turn on the car again. It's extremely saving power and capacity as the normal video is 30 frames per second while this time-lapse is just 1 or 3 frames.

- ☐ Off (DEFAULT)
- ☐ Time Lapse 1 fps (Recommend)
- ☐ Time Lapse 2 fps
- ☐ Time Lapse 5 fps


## VIDEO SETTINGS

### Parking Mode Timing

You can set a duration for parking mode, when the time is out, the camera will power off and go to collision sensing mode(when it detects a collision, the dash cam will power on again and record a 1 min video)

- Off (default, the dash cam will stay on parking mode till you start the car again)
- 12 hours
- 24 hours
- 48 hours

## SYSTEM SETTINGS

In video settings menu, you can press MENU BUTTON  once more to enter the camera system setting menu.

### Contact Technical Support

If you need support from us, just contact us via the information from this content shows, we will reply to you in 24 hours in working days.

### WiFi

This option will show the WiFi information of the name & password, in case you forget the WiFi name or password of M2 dash cam. After you change the WiFi name or password, please forget the WiFi from your cellphone and re-connect again.

WIFI Name/ SSID	Peztio-M2-****
WIFI Password	12345678

## SYSTEM SETTINGS

---

### Frequency

Here you should choose the frequency accordingly to your power supply specification used in your country based on your geographical location.

- 60 Hz (Default)
- 50 Hz

### Key Voice

This feature allows you to turn ON/OFF camera button's beep sound

- Off
- On DEFAULT

### Screen Saver

If you don't press any button for a period of the preset time, the screen will auto-off but the recording will go on. You can also turn off this function to let the screen always be on.

- Off (Screen Always On)
- After 30 seconds
- After 1 minute
- After 2 minutes

### Speaker Volume

This feature allows you to adjust the volume of the speaker, and if you feel the volume of the speaker is too loud, you can turn it down or turn it off.

Voice contents:

- |                             |                             |
|-----------------------------|-----------------------------|
| 🔊 Factory default success   | 🔊 Please insert the SD card |
| 🔊 Formatting is completed   | 🔊 Start recording           |
| 🔊 Mute off                  | 🔊 Start time-lapse video    |
| 🔊 Mute on                   | 🔊 Stop recording            |
| 🔊 Picture success           | 🔊 Video locked              |
| 🔊 Please format the SD card |                             |

### OPTIONS:

- 0
- 1
- 2
- 3 (Default)
- 4

## SYSTEM SETTINGS

### Date / Time

You can set the date & time here manually, but typically this M2 dashcam will auto sync the date & time with your cellphone after the cellphone is connected to this M2 dashcam.

### Format

This feature will allow you to format inserted memory card, all the data will be deleted. You can format the SD via the dash cam by operation the system menu or via the Camera Settings Menu from Peztio app (see page 19).

### Language

You can set the language of the M2 dashcam show.

### Factory Reset

Here you can restore all the settings to factory default settings.




### ***Resetting the dash cam settings & reboot the dash cam are different.***

Reboot the camera hardware.


When your dash cam becomes freezing and no buttons are responsive, rebooting the hardware may help. Please use the needle that came with the package or yours to push the reset hole of the dash cam, this will force a hardware restart, but will keep your previous personal settings.

Setting the camera firmware to default setting.

When you want to restore all settings to factory defaults, you can make the use system setting menu to achieve:

>Double-Press  to enter system setting

>Scroll down and find the 'Default Setting' option,

>Press  to start the process.

## SPECIFICATIONS

### SPECIFICATIONS

<b>Display Screen</b>	2 inch IPS Screen
<b>G-sensor</b>	Built-in
<b>Resolution</b>	Single Front Mode: 2.5K-1440P 2 Channel Mode: 2.5K Front + 1080P Inside 2.5K Front + 1080P Rear 3 Channel Mode: 2.5K+1080P+1080P 1080P+1080P+1080P
<b>Sensor</b>	6 glass, 170 Degree Wide Angel Lens
<b>Language</b>	English, German, Japanese, etc
<b>Video Format</b>	.ts
<b>Picture Format</b>	JPEG
<b>Power interface</b>	5V/2A
<b>Working Temperature</b>	Working temperature -4°F to 167°F (-20 C to 75°C).

## Sincere Thanks

Dear customer,

Thanks for choosing our Icesky dashcam. As you are the most valuable customer of us, we provide 12 months warranty & life time customer care for you. **Please regist your product on our website (following the steps below)** and we will provide the warranty service and customer care for you.

- **If you have any problem about our dash cam, please contact us via the email or whatsapp.** Typically we will reply in 12 hours and we will try our best to help, thank you!

Sincerely,

Icesky

### REGIST YOUR 12 MONTH WARRANTY (CUSTOMER CARE)



#### REGISTER WITHIN THE FIRST 30 DAYS

Scan this QR Code Using your iPhone or Andriod's Camera to start your Product Registration.

Or visit the link using mobile or PC/MAC:  
[peztio.com/apps/product-registration](http://peztio.com/apps/product-registration)



Scan to download  
the 'Peztio' APP

## ***HEY, FIND US HERE***

OUR EMAIL ADDRESS:  
[support@galphi.com](mailto:support@galphi.com)

Scan the code with your  
cellphone and you can  
email us directly!



OUR WhatsApp

Scan the code with your  
WhatsApp and chat with  
our support right now!



Typically we will reply to you in 24 hours on working day!



#### FCC WARNING

This device complies with part 15 of the FCC Rules. Operation is subject to the following two conditions: (1) this device may not cause harmful interference, and (2) this device must accept any interference received, including interference that may cause undesired operation.

Any changes or modifications not expressly approved by the party responsible for compliance could void the user's authority to operate the equipment.

NOTE: This equipment has been tested and found to comply with the limits for a Class B digital device, pursuant to Part 15 of the FCC Rules. These limits are designed to provide reasonable protection against harmful interference in a residential installation. This equipment generates, uses and can radiate radio frequency energy and, if not installed and used in accordance with the instructions, may cause harmful interference to radio communications. However, there is no guarantee that interference will not occur in a particular installation. If this equipment does cause harmful interference to radio or television reception, which can be determined by turning the equipment off and on, the user is encouraged to try to correct the interference by one or more of the following measures:

- Reorient or relocate the receiving antenna.
- Increase the separation between the equipment and receiver.
- Connect the equipment into an outlet on a circuit different from that to which the receiver is connected.
- Consult the dealer or an experienced radio/TV technician for help.

To maintain compliance with FCC's RF Exposure guidelines, This equipment should be installed and operated with minimum 20cm distance between the radiator and your body: Use only the supplied antenna.