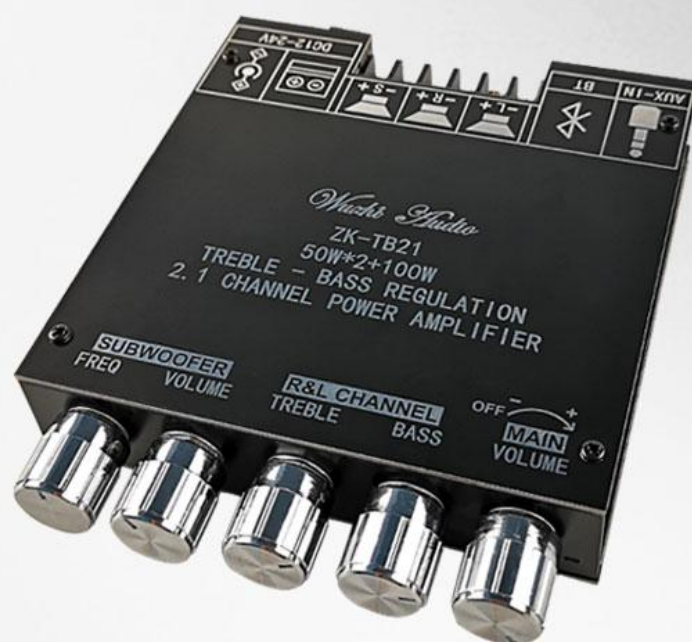


# ZK-TB21 2.1Channels TPA3116D2 BT Power Amplifier Module Treble Bass Subwoofer 50W\*2+100W

**2.1channels** Bluetooth power amplifier module

AUX+Bluetooth | Subwoofer+Left and right channel output

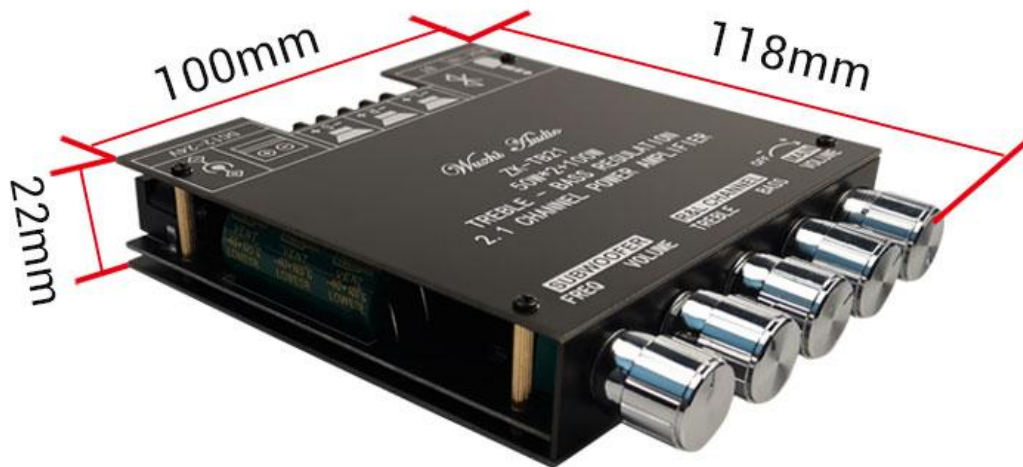


50W + 50W + 100W

## Catalogue

ZK-TB21 2.1 Channels TPA3116D2 BT Power Amplifier Module 50W*2+100W .....	1
Catalogue.....	2
Product parameters .....	3
Product function .....	4
Product details .....	5
Installation diagram and installation list .....	6

# 1. Product parameters



Product Name : 2.1 channel audio amplifier module with Tone

Product Model : ZK-TB21

Bluetooth Version : 5.0 (no shielding, 10 meters)

Input Sensitivity: 500mV

Audio Input : AUX + Bluetooth

Channel : 2.1

Chip Solution : TPA3116D2 (with AM interference suppression)

Power Range : DC12~24V / 5A above (high power recommended high voltage)

Adapter Speaker : 20W~100W, 4~8Ω

Output Power : Max 50W @ R&L channel

Max100W @ subwoofer

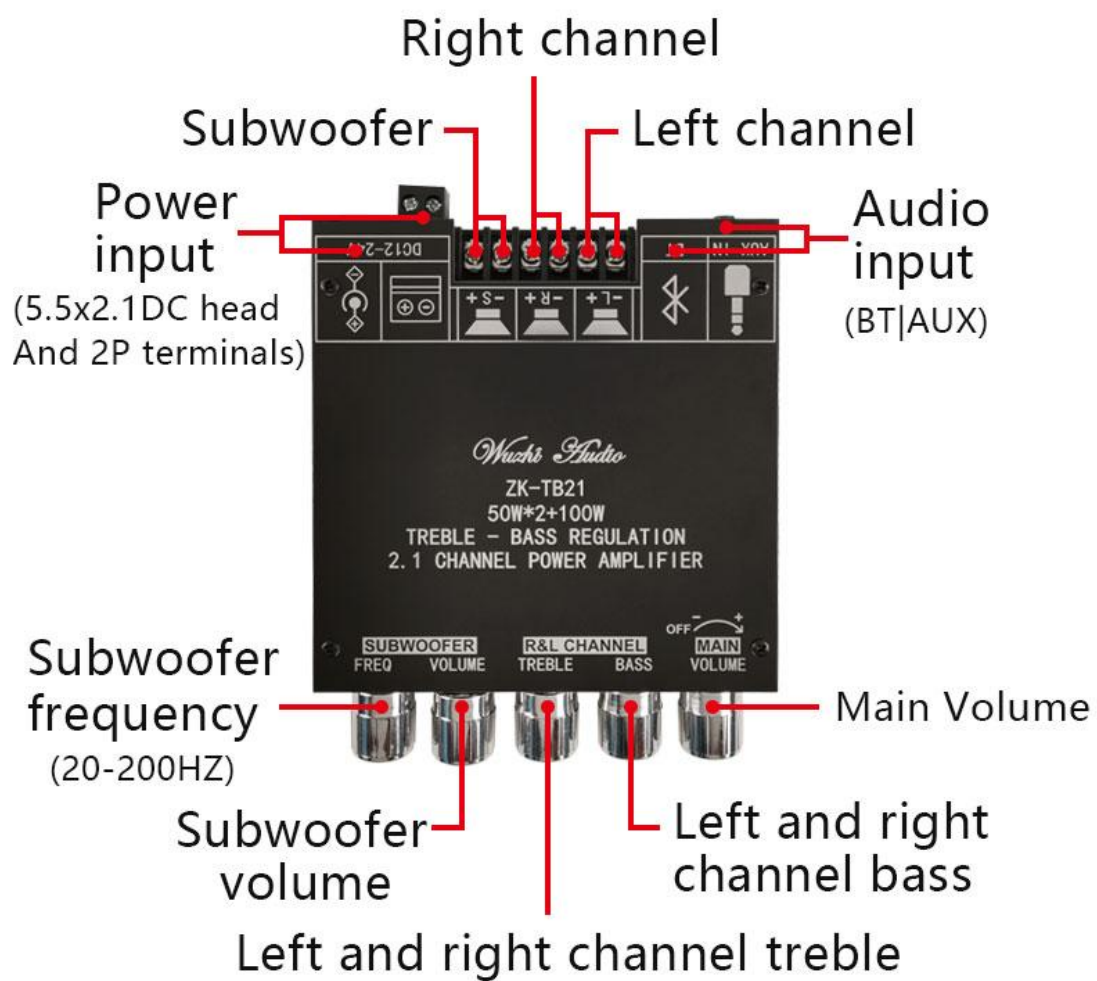
Protection Mechanism : overvoltage, undervoltage, overheating, DC detection, short circuit protection

Product Dimensions : 120mm\*100mm\*20mm

Package Weight : net weight:195g Packing weight:256g

PS: In the audio input is enough, the supply voltage/current is enough, there will be enough output power! The higher the supply voltage, the greater the output power. The smaller the impedance of the speaker, the greater the output power! Please ensure that the power of the adaptor is greater than the actual working power of the amplifier!

## 2. Product function

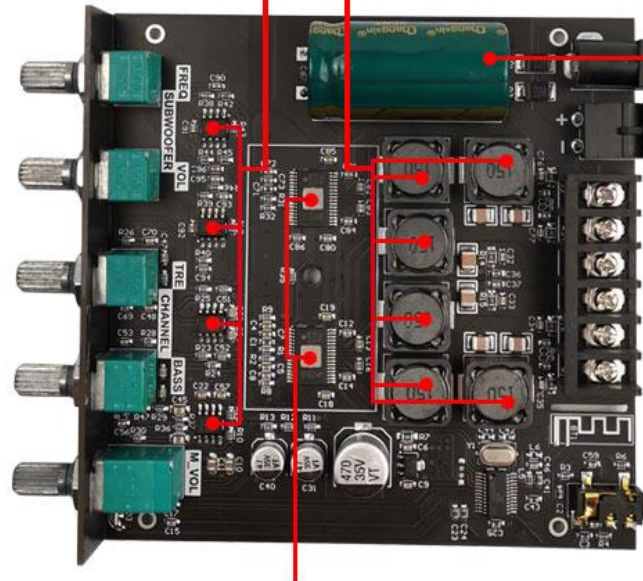


### 3. Product details

Low noise front stage  
operational amplifier

Shield power inductance

Large  
capacity  
energy  
storage  
capacit-  
ance

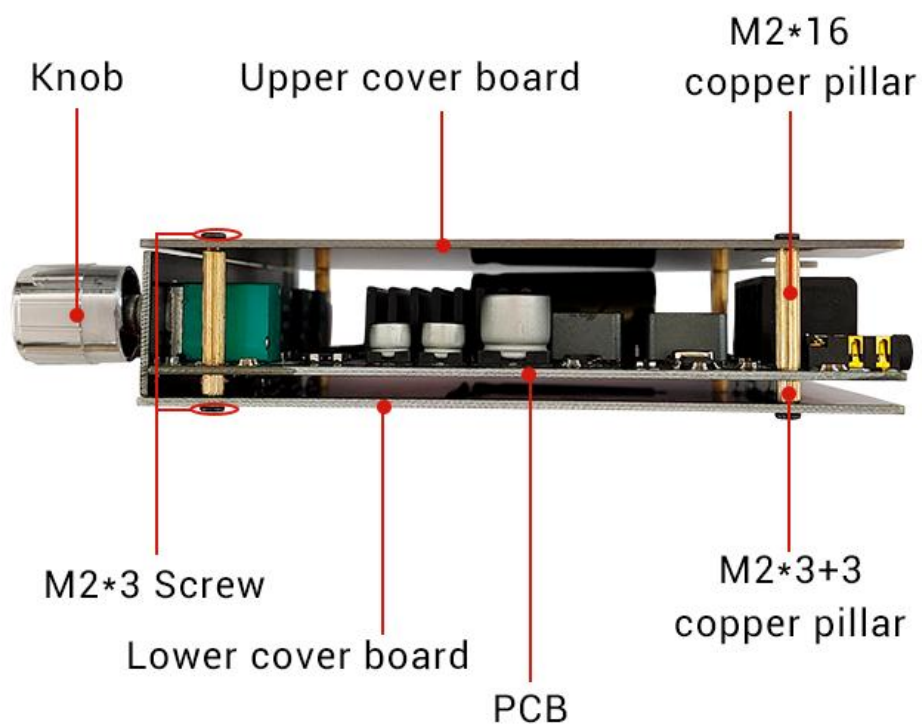


Original imported 3116 amplifier chip



50MM\*25MM\*10MM Heat sinks

## 4. Installation diagram and installation list



Free screwdriver and 2p terminal



This device complies with part 15 of the FCC Rules. Operation is subject to the following two conditions: (1) this device may not cause harmful interference, and (2) this device must accept any interference received, including interference that may cause undesired operation.

Any changes or modifications not expressly approved by the party responsible for compliance could void the user's authority to operate the equipment.

NOTE: This equipment has been tested and found to comply with the limits for a Class B digital device, pursuant to Part 15 of the FCC Rules. These limits are designed to provide reasonable protection against harmful interference in a residential installation. This equipment generates, uses and can radiate radio frequency energy and, if not installed and used in accordance with the instructions, may cause harmful interference to radio communications. However, there is no guarantee that interference will not occur in a particular installation.

If this equipment does cause harmful interference to radio or television reception, which can be determined by turning the equipment off and on, the user is encouraged to try to correct the interference by one or more of the following measures:

- Reorient or relocate the receiving antenna.
- Increase the separation between the equipment and receiver.
- Connect the equipment into an outlet on a circuit different from that to which the receiver is connected.
- Consult the dealer or an experienced radio/TV technician for help.

The device has been evaluated to meet general RF exposure requirement. The device can be used in portable exposure condition without restriction