

IRONZON FINGERPRINT LOCK (291Y)



Content

Installation Video QR Code	02
Packing List	03
Installation Dimension	04
Adjust Latch Length.....	05
Install the Latch and Adjust the Backset of Latch (if needed)	06
Installation Steps	07
Reset Methods	08
Operation of Tuya APP	10
Normally Open Mode On and Off	18
Emergency Unlock	19
IC Caution	20
FCC Statement	22
Useful Tips	24
After-Sales Service	24

Please read this user manual before fitting and using your door lock!
If you need help, please let us know.

Installation Video

Please watch this video first
and use this manual as a guide.



Packing List



Exterior Assembly



Interior Assembly



Spring Latch (Adjustable Length)



Entry Keys (2 ea.)



Connecting
Pipe- Short x2



Connecting
Pipe- Long x2



Screws A



Screws B



Screws C

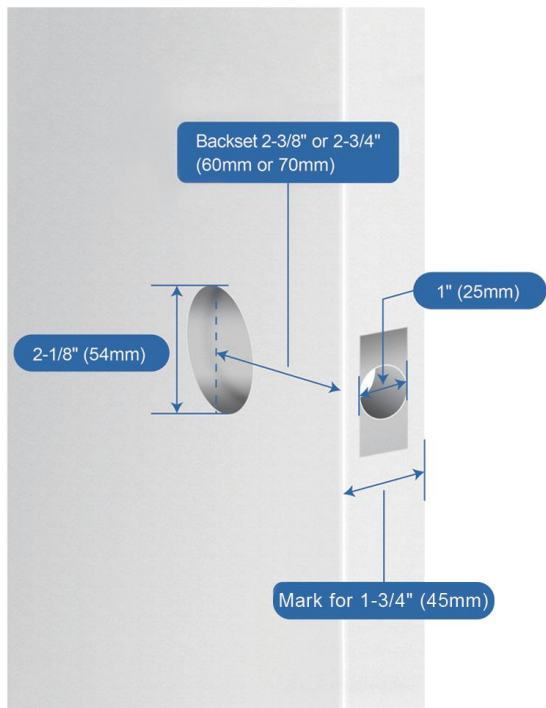


Bottom Box



Strike Plate

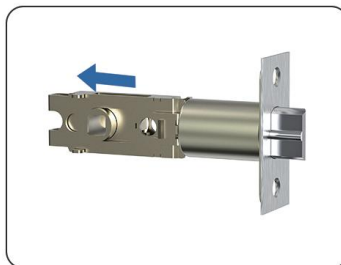
Installation Dimension



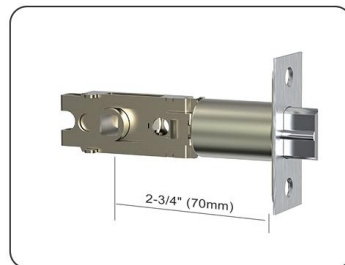
Adjust Latch Length



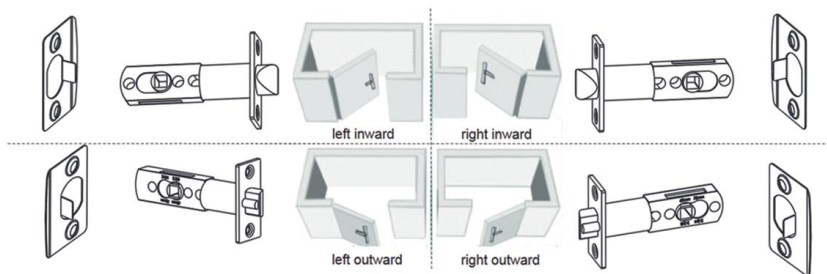
The length of the latch can be adjusted from 60mm(2-3/8") to 70mm(2-3/4") to accommodate two different distances from the door hole to the door side.



Hold the square hole of the latch and pull it outward until it can no longer be pulled.



Now the latch length is adjusted to 70mm(2-3/4").



Note: Pay attention to the direction of the Spring Latch and Pinch Plate Buckle Cover when you installing.

Install the Latch and Adjust the Backset of Latch (if needed)



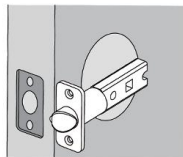
①

Hold the latch in front of the door hole, with the latch face flush against the door edge.



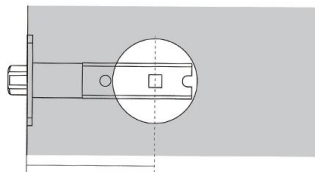
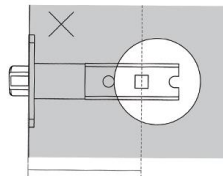
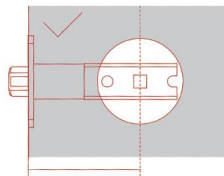
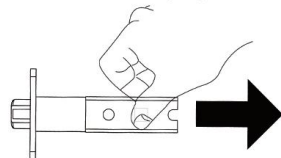
②

If the latch holes are centered in the door hole, no adjustment is required. Proceed to step 2. If latch holes are NOT centered, adjust latch. See "Adjust Latch Length".



③

Latch adjustment (only if needed)




Note: The square hole of the latch remains vertical.

Installation Steps

STEP 1:



Open the battery cover to install the batteries.

 **Note:** 4 AAA Alkaline Batteries.

STEP 3:




Connect door lock circuit board port.

 **Note:** The wire cannot be placed between the battery and the spring.

STEP 2:



Install and fix the door handle.

 **Note:** The square tube should be aligned with the latch holes.

STEP 4:



Tighten the screw securing the battery cover.

Reset Methods

Method 1:

STEP 1:



Move the cover and press and hold the rear handle button for 9 seconds.

STEP 2:



The blue light keeps blinking and the numbers fade from 6 to 1 with a ticking sound.

STEP 3:



The red light blinks and the voice prompts for a successful reset.



Note: To ensure user safety, perform a system reset before using the door lock.

Method 2:

STEP 1:



Touch to wake up the password area.

STEP 2:



Enter “# + 1 + #” , and the indicator will blink blue light.

STEP 3:



Enter the administrator's fingerprint to confirm the information.

STEP 4:



Follow the voice instructions and press “4” for system resetting.

STEP 5:



Press “#” to confirm system reset.

STEP 6:



The red light blinks and the voice prompts for a successful reset.

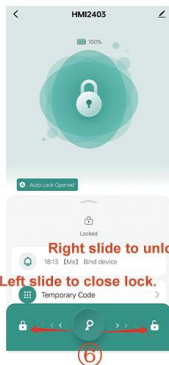
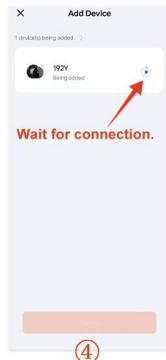
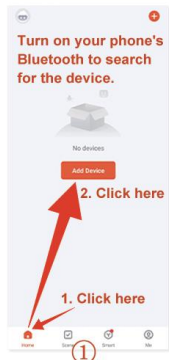
Operation of Tuya APP

I .Scan the Given QR Code with Your SmartPhone to Download the APP.



Tuya Smart

II. Add the Door Lock

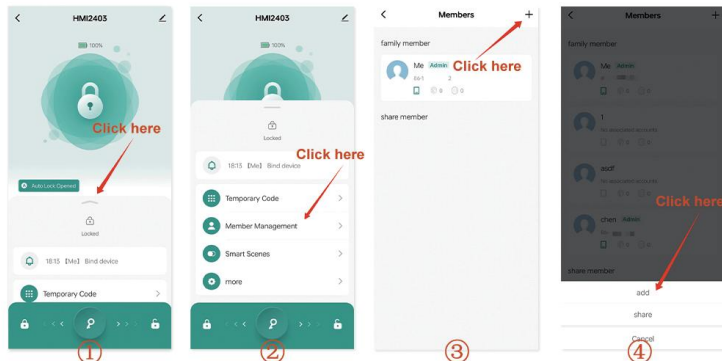


If this text appears on the page, it means the lock is disconnected from your phone. Wake up the lock by touching its fingerprint sensor.

Left slide to close lock.



III. Add Members



You can add or invite members and edit their permissions in Member Management.

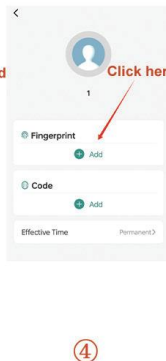
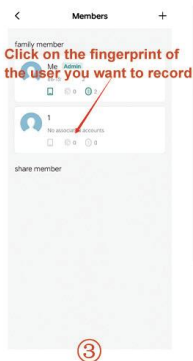
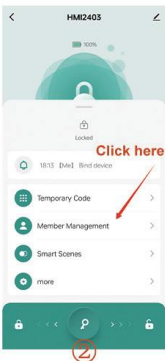
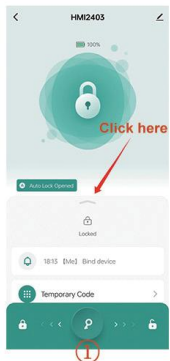


Note: Family members cannot be deleted in Member Management but in Home Management of "Me" Page.

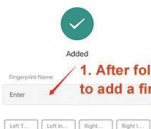
When you add your first family member, the APP will ask you to create a family and then add member. The Tuya account for family members will receive to invitation and it will appear in the family member acceptance.



IV. Add Fingerprints



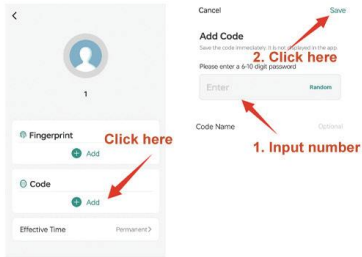
Add the fingerprint from 5 different angles to further improve the recognition rate of fingerprints.



2. Click here



V. Add User Passwords

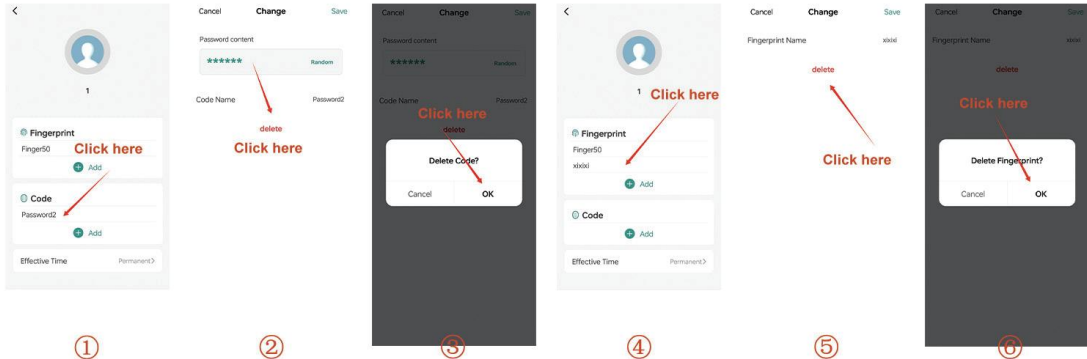


Permanent passwords are valid until you delete them. It is highly recommended to use the password itself as its name.

①

②

VI. Delete Passwords and Fingerprints



①

②

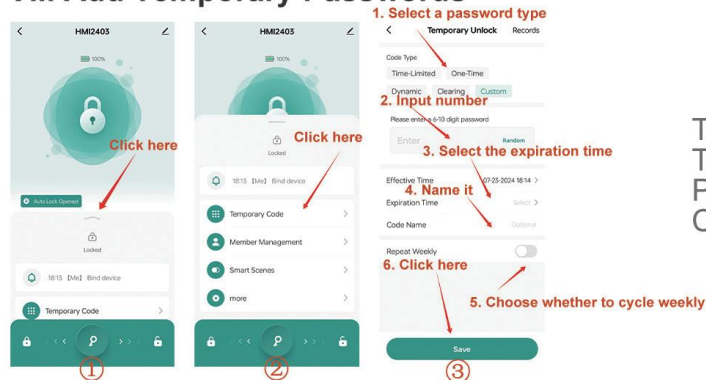
③

④

⑤

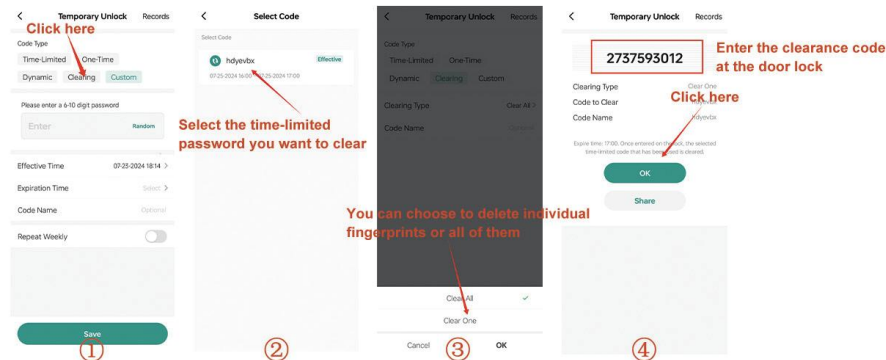
⑥

VII. Add Temporary Passwords

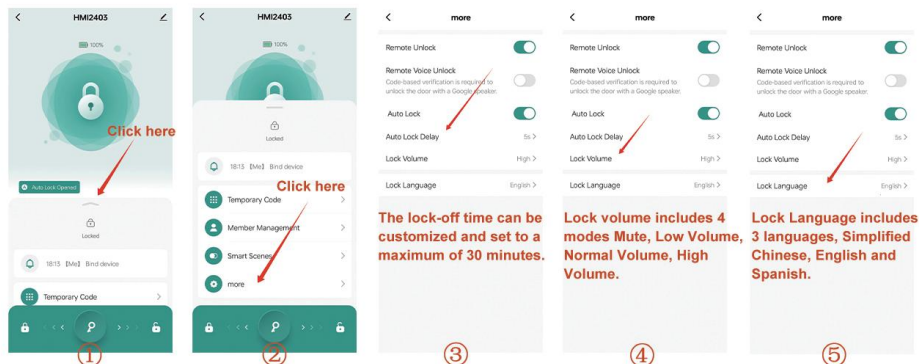


Temporary Passwords include Time-Limited Password, One-Time Password, Dynamic Password and Custom Password.

VIII. Delete Time-limited Passwords



IX. System Settings



X. Add Bluetooth Gateway (Not Included) for Remote Control

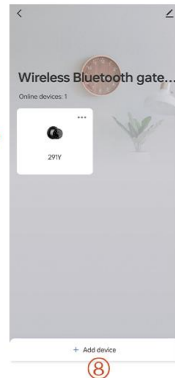
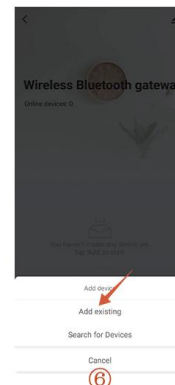
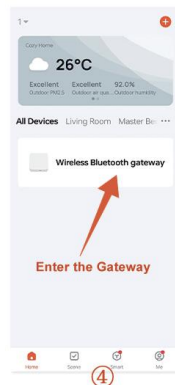
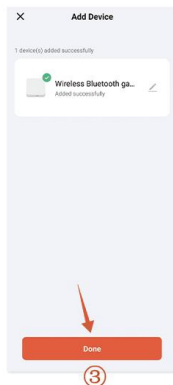
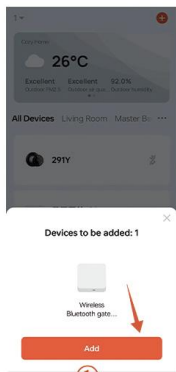
With IRONZON Tuya Bluetooth Gateway, you can control the door lock via Internet.

Warning: Gateways from other band may possibly no work with it!

! Note: Before you bind the lock with the Bluetooth Gateway, make sure at least one password or fingerprint has already recorded in the lock.

2. Please check if "Remote Unlocking" in "Settings" Page is turned on.





⚠ Note:Power on Bluetooth Gateway, long press the Reset Button till red indicator light blinks. Open Tuya Smart APP, and you will see that the device pops out.

Normally-Open Mode



Enter the fingerprint that has been successfully recorded and press “9+#” to turn on the Normally Open Mode.

Cancel Normally-Open Mode



After entering your fingerprint and performing one unlocking and closing, the normally open mode is automatically turned off.

Emergency Unlock



Note: This interface does not support charging and is limited to emergency unlocking when the battery is powered off.

STEP 1:



Plug the Type-C power cord into the connector.

STEP 2:



Press the registered administrator's fingerprint.

STEP 3:



Unlocking is successful.

IC Caution

RSS-Gen Issue 5 "&" RSS-Gen numéro 5

- English:

This device contains licence-exempt transmitter(s)/receiver(s) that comply with Innovation, Science and Economic Development Canada's licence-exempt RSS(s). Operation is subject to the following two conditions:

- (1) This device may not cause interference.
- (2) This device must accept any interference, including interference that may cause undesired operation of the device.

Any changes or modifications not expressly approved by the party responsible for compliance could void the user's authority to operate the equipment.

- French:

Cet appareil contient des émetteurs / récepteurs exemptés de licence conformes aux RSS (RSS) d'Innovation, Sciences et Développement économique Canada.

Le fonctionnement est soumis aux deux conditions suivantes:

(1) Cet appareil ne doit pas causer d'interférences.

(2) Cet appareil doit accepter toutes les interférences, y compris celles susceptibles de provoquer un fonctionnement indésirable de l'appareil.

Tout changement ou modification non expressément approuvé par la partie responsable de la conformité pourrait annuler l'autorité de l'utilisateur à utiliser l'équipement.

FCC Statement

This device complies with part 15 of the FCC Rules. Operation is subject to the following two conditions:

- (1) This device may not cause harmful interference, and
- (2) this device must accept any interference received, including interference that may cause undesired operation.

Note: This equipment has been tested and found to comply with the limits for a Class B digital device, pursuant to part 15 of the FCC Rules. These limits are designed to provide reasonable protection against harmful interference in a residential installation. This equipment generates, uses and can radiate radio frequency energy and, if not installed and used in accordance with the instructions, may cause harmful interference to radio communications.

However, there is no guarantee that interference will not occur in a particular installation. If this equipment does cause harmful interference to radio or television reception, which can be determined by turning the equipment off and on, the user is encouraged to try to correct the interference by one or more of the following measures:

- Reorient or relocate the receiving antenna.
- Increase the separation between the equipment and receiver.
- Connect the equipment into an outlet on a circuit different from that to which the receiver is connected.
- Consult the dealer or an experienced radio/TV technician for help.

Note: The Grantee is not responsible for any changes or modifications not expressly approved by the party responsible for compliance. such modifications could void the user's authority to operate the equipment.

The device has been evaluated to meet general RF exposure requirement.

This equipment complies with FCC's RF radiation exposure limits set forth for an uncontrolled environment. This device and its antenna(s) must not be colocated or conjunction with any other antenna or transmitter.

Useful Tips

1. **Keep at least one key out of the door for emergency.**
2. When the battery is low, the indicator will blink red light. The rest power could only be used for about 50 times.

After-Sales Service

If you have any problem during installation or operation, please contact us.

Our E-mail is support@ironzon.com