

## SMART LOCK INSTRUCTIONS

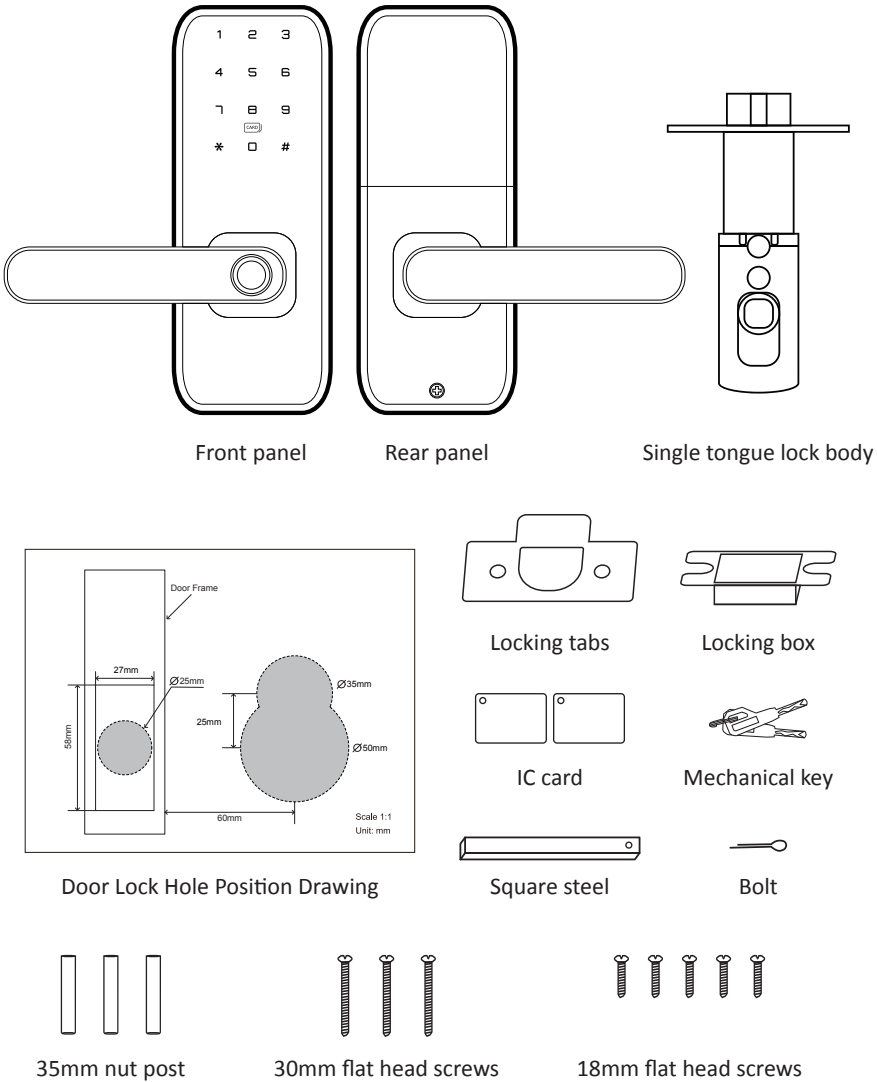
1. Product parameters

Number of users : Fingerprint 100, Password 150, Card 100
Bluetooth standards : Bluetooth 5.0BLE
System support : Android 4.3 / IOS 7.0 +
Unlocking mode : APP, password, fingerprint, credit card, key
Fingerprint Head Type : Semiconductor fingerprint head
Number of password digits : 6 ~ 10 bits
Number of passwords : APP Send password (unlimited), custom password (150)
Scheme of electric power supply : 4 x AA alkaline dry batteries
Operating current : 180mA
Standby current : 35uA
Operating temperature : -20~60°C
Low voltage alarm : 4.8V ± 0.2V is lower than 4.8V when unlocking, broadcast low power reminder, need to replace the battery.
Fakeadmission Rate : ≤0.00004%
Authenticity : ≤0.015%

Tips: Please store your mechanical key outdoors for backup!

2. Inspection of Basic Fittings

Open the package and take out the products and accessories, check whether the items are complete.

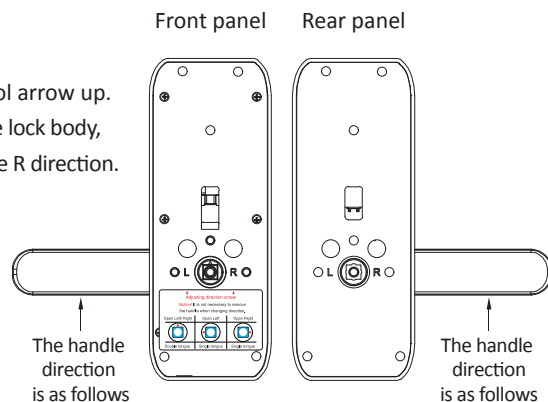


### 3. Door handle reversing left and right

Right door replacement direction:

With double tongue triangle symbol arrow up.

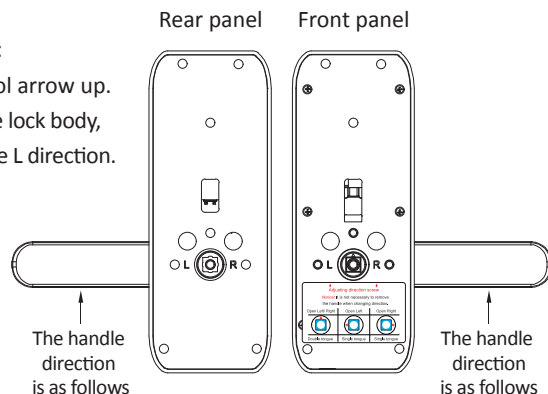
When equipped with a single tongue lock body, the triangle symbol is mounted in the R direction.



Change direction of left open door:

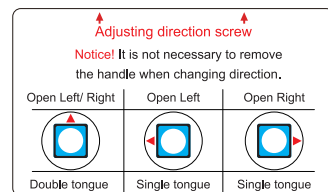
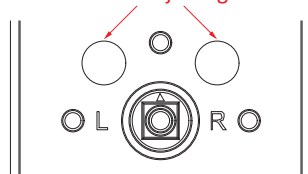
With double tongue triangle symbol arrow up.

When equipped with a single tongue lock body, the triangle symbol is mounted in the L direction.



Note: When changing the left and right door handles on the front and back panels, press down the handle about 15°, remove the adjustment screw in the panel with a phillips screwdriver, and install it in another hole.

Screw hole for adjusting direction

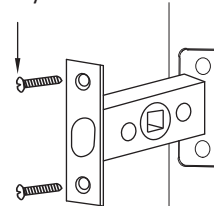


### 4. Installation Steps

#### Installing lock body

Put the lock body into the corresponding door slot and fix the lock body up and down with screws.

Lock body screwX2



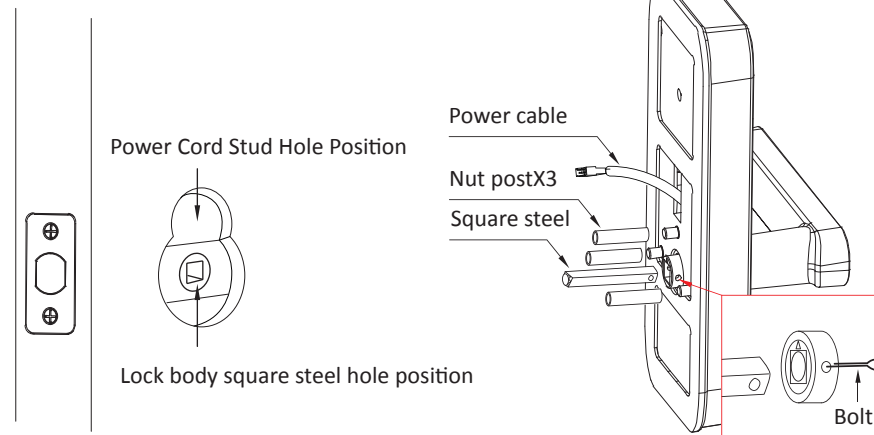
Power Cord Stud Hole Position



Lock body square steel hole position

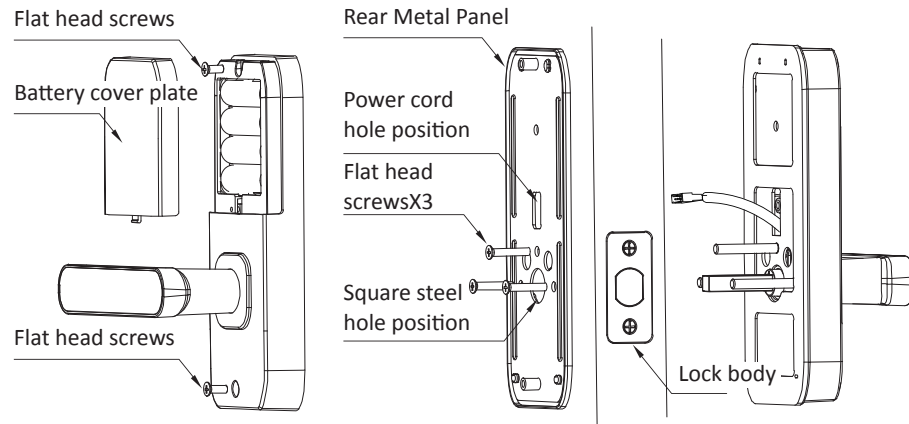
#### Installing the front panel

1. Use the latch to pass through the square steel hole to clamp the latch and fix the square steel on the hole.
2. Screw down the front panel with 3 studs; To use the double tongue lock body just screw the lower 2.
3. Turn the clutch to the corresponding position.
4. Insert the power cord from the front panel through the door hole and insert the stud and square steel into the lock body.
5. Install the silicone pad on the back cover (iron plate), install the corresponding screw to the stud of the front panel and tighten it.

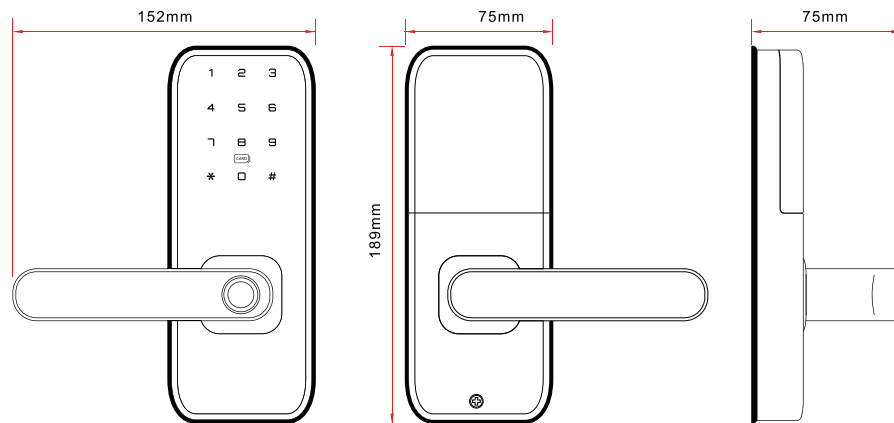


## Installing the rear panel

1. Connect the front and rear panel power cords, and put the surplus power cords into the door frame holes.
2. Remove the battery cover plate, press the handle hole to the end of the square steel, install the two flat head screws on the back panel.
3. Install the four AA batteries and close the battery compartment lid.
4. Test door lock electrification, installation completed.



## 5. Product



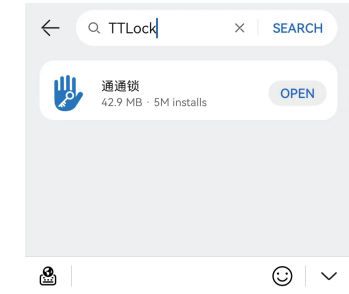
★ Manual measurement, there is error, please refer to the actual product size.

## 6. The app explains.

### APP application download

The iOS version of the software can be downloaded from the App Store and the Android version from google play, App Store, Baidu, Ali, 360, Huawei, Xiaomi and other app markets.

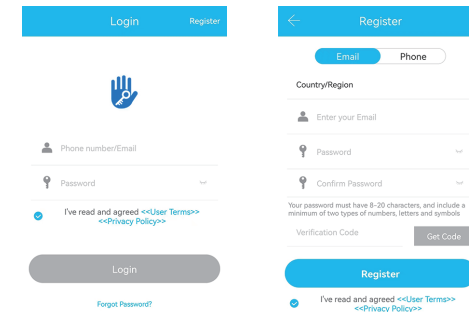
1. Scan the QR code on your mobile phone to download the Tong Tong Lock App
2. Search for "Tong Tong Lock" in the application market to install and download.



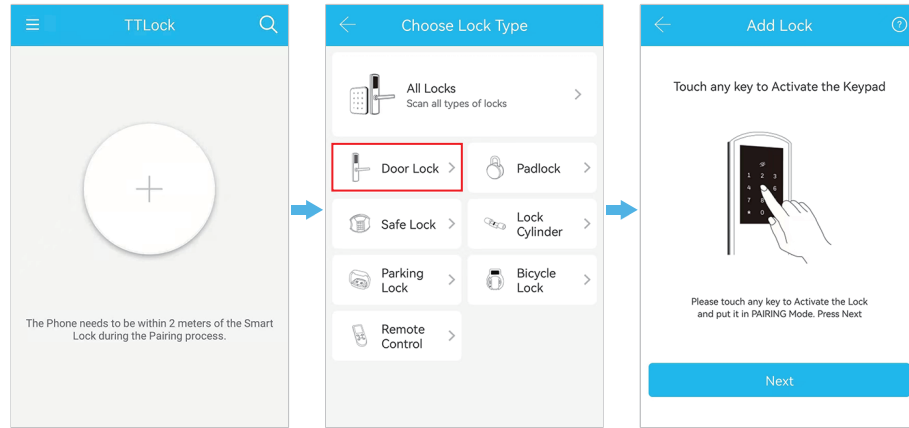
### User registration and login

User registration: On the login page, click on "Register" in the top right corner and enter your mobile phone number or email address, set your password and click Register.

User Login: On the login page, enter your account and password and click "Login".



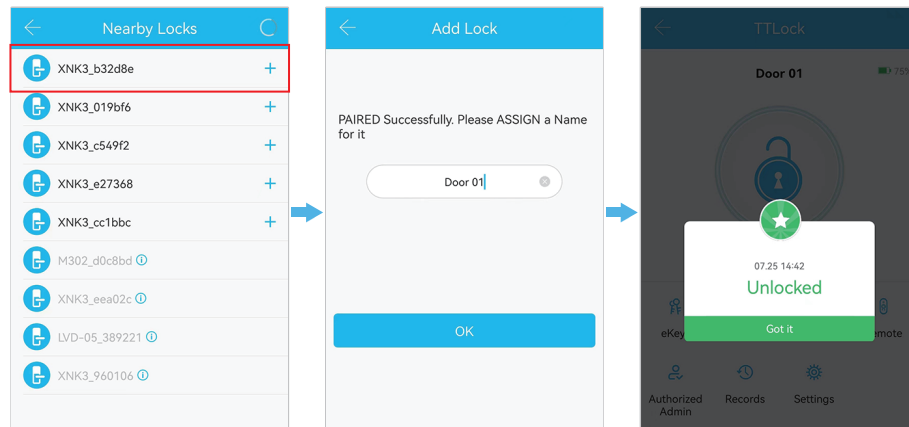
## Add Door Lock Device



Add a Lock

Select Door Lock

Light Up Keypad

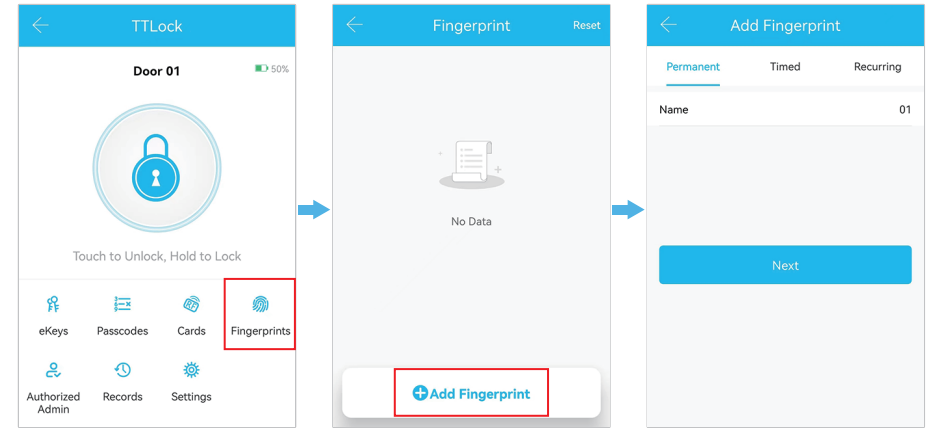


Select Lock

Enter Name

Operation complete

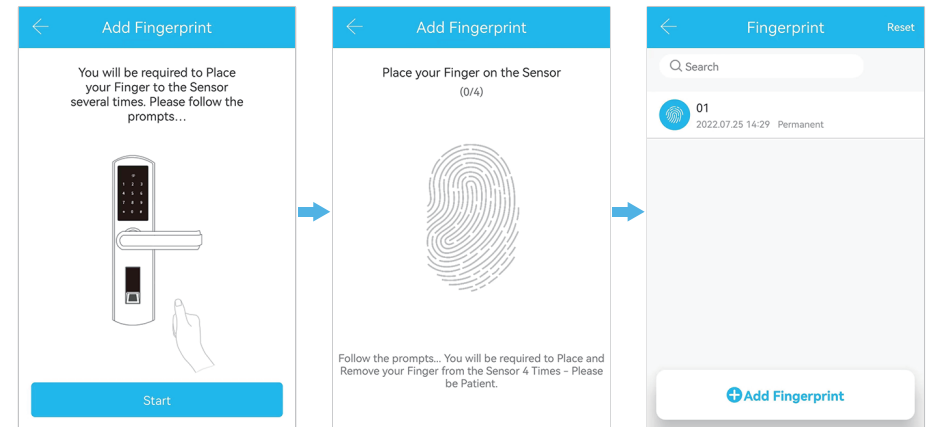
## Set Up Fingerprint Unlock



Select on the main page  
Fingerprints

Click Add Fingerprint

According to the customer's  
door opening needs  
Select fingerprint type

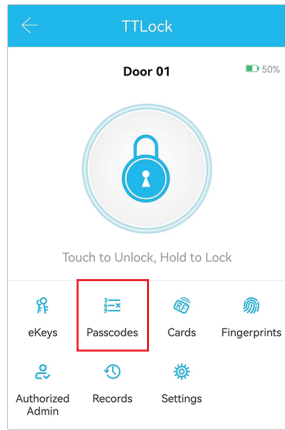


Bring your phone close to the  
door lock device click Start

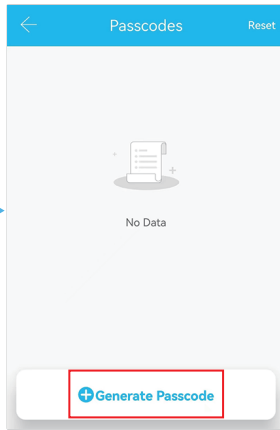
Follow the prompts to  
collect fingerprints

Fingerprint collection  
completed

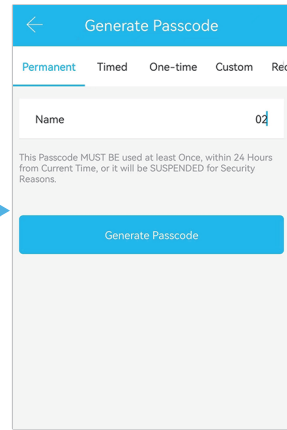
## Set Password To Unlock



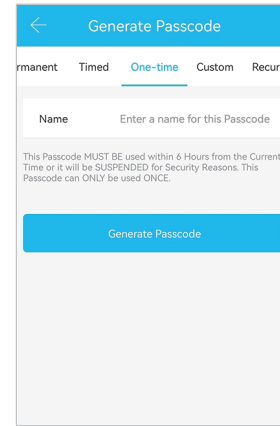
Select on the main page  
Passcodes



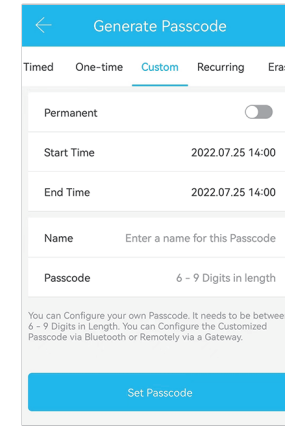
Select Generate Passcode



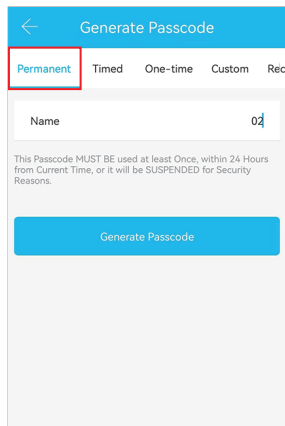
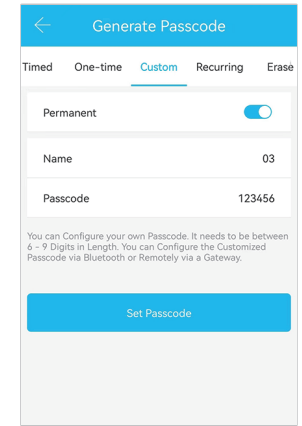
Select the password type  
according to the use  
requirements of the door lock



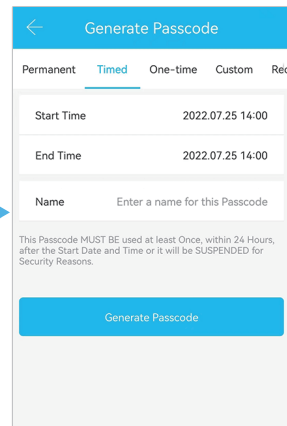
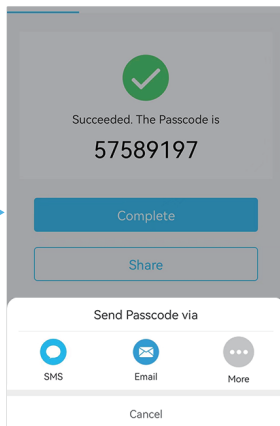
Get One-time password  
1. Select One-time  
2. Name the password  
3. Click Generate Passcode



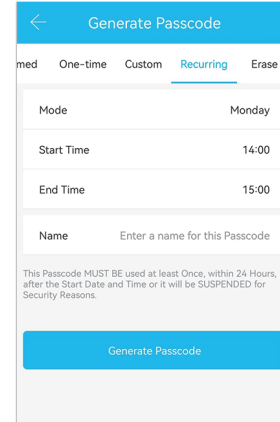
Get Custom password  
1. Select Custom  
2. Set Start Time or End Time or enable permanent option  
3. Name the password  
4. Set a 6-digit password  
5. Click Generate Passcode



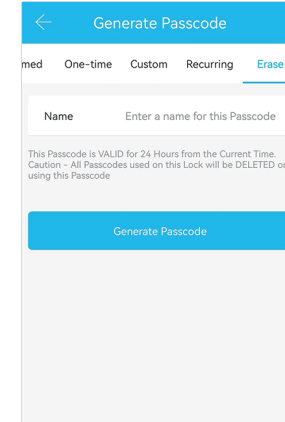
Get Permanent password  
1. Select Permanent  
2. Name the password  
3. Click Generate Passcode  
4. Click finish or share to send password



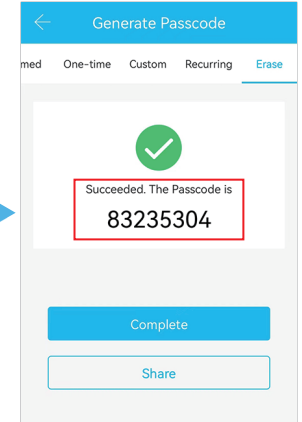
Get Timed password  
1. Select Timed  
2. Set Start Time or End Time  
3. Name the password  
4. Click Generate Passcode

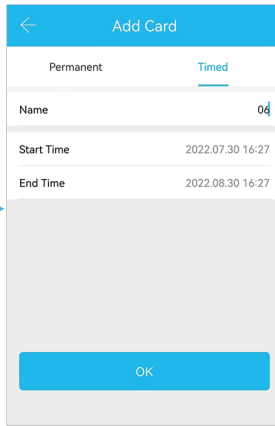
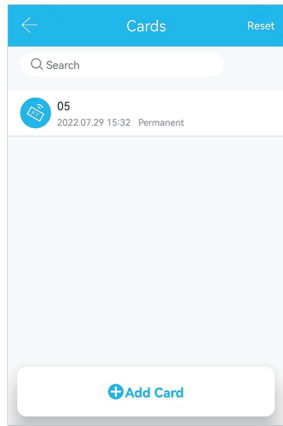


Get Recurring password  
1. Select Recurring  
2. Set repeat mode  
3. Set Start Time or End Time  
4. Name the password  
5. Click Generate Passcode



Erase password  
1. Select Erase  
2. Enter the password on the door lock  
device and clear all passwords

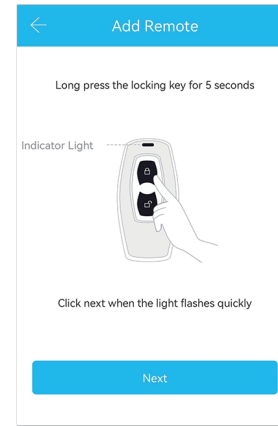




### Set to add IC card

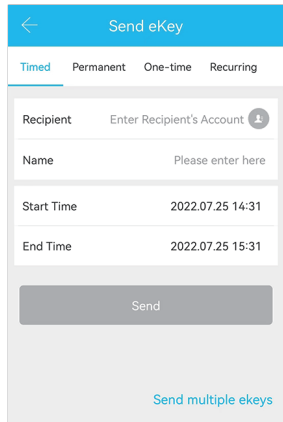
1. Select on the main page Cards
2. Click Add Card
3. Choose Permanent or time
4. Name the password
5. Set the effective expiration time
6. Click OK

(When adding, the card needs to be close to the card reading area of the lock)



### Add a remote

1. Select on the main page Remote
2. Click to add remote
3. Select remote control type  
Select Permanent, Timed, Recurring
4. Name the remote and click Next
5. When the light flashes, click Next
6. Linking device
7. Add finished



### Password sharing

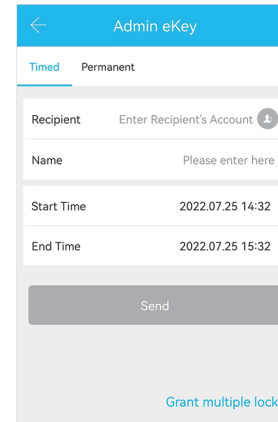
1. Select on the main page eKey
2. Select the type of password to share
3. Choose who to send
4. Click Send

**Timed :** The validity period can be set, the shortest is 1 hour and the longest is 3 years. If the validity period is less than one year the time is accurate to the hour; if the validity period exceeds one year, the time is accurate to the month. The password must be used within 24 hours after it takes effect, otherwise it will automatically expire.

**Permanent:** Set a password that will always be used from now on. The password must be used within 24 hours after it takes effect, otherwise it will automatically expire.

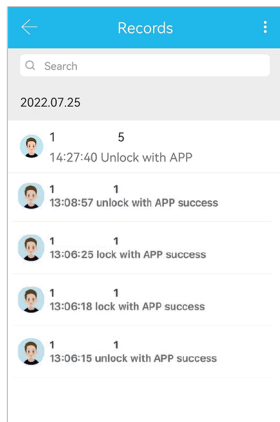
**One-time :** Can only be used once and is valid for 1 hour.

**Recurring :** It can be used repeatedly within the specified time interval, and types such as daily cycle, weekday cycle and weekend cycle can be set.



### Authorized Admin

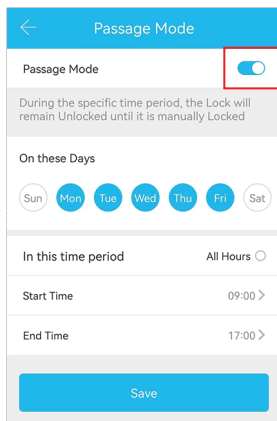
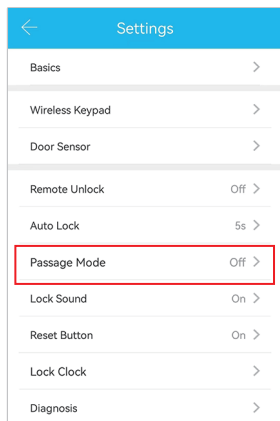
1. Select on the main page Authorized Admin
2. Click Add Authorized Administrator
3. Select administrator type Timed, Permanent
4. Fill in the account number and name of the other party
5. Set Start Time or End Time
6. Click Send



## Open door record query

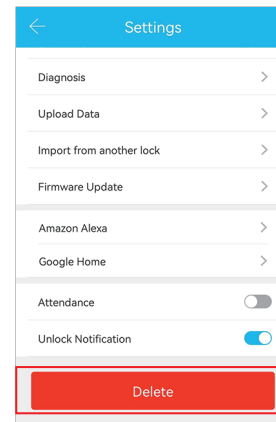
Select on the main page Records

It is also possible to search the door opening records of a single user.



## Passage Mode

1. Select on the main page Settings
2. Choose Passage Mode
3. Open Password query
4. Set opening hours
5. Click Save



## Restore Factory Settings

Delete the device at TT lock app, after click the delete, it need fill your register password and also press #t at the panel of lock, then app will show deleted successfully.

## Off-Line

1. Open the battery cover.
2. Press and hold the reset button below the battery with your hand.
3. Hear the voice prompt "Please enter the initialization password".
4. Enter "000" and the ""#"" key.
5. System initialization is complete.

## How to Verify Password Correctly

After entering the correct password, press "#" to hear the prompt sound "di~". The number light on the password keypad lights up, and the password verification is successful. Press the handle to open the door.



This device complies with part 15 of the FCC Rules. Operation is subject to the following two conditions: (1) This device may not cause harmful interference, and (2) this device must accept any interference received, including interference that may cause undesired operation.

Any Changes or modifications not expressly approved by the party responsible for compliance could void the user's authority to operate the equipment.

**Note:** This equipment has been tested and found to comply with the limits for a Class B digital device, pursuant to part 15 of the FCC Rules. These limits are designed to provide reasonable protection against harmful interference in a residential installation. This equipment generates uses and can radiate radio frequency energy and, if not installed and used in accordance with the instructions, may cause harmful interference to radio communications. However, there is no guarantee that interference will not occur in a particular installation. If this equipment does cause harmful interference to radio or television reception, which can be determined by turning the equipment off and on, the user is encouraged to try to correct the interference by one or more of the following measures:

- Reorient or relocate the receiving antenna.
- Increase the separation between the equipment and receiver.
- Connect the equipment into an outlet on a circuit different from that to which the receiver is connected.
- Consult the dealer or an experienced radio/TV technician for help.

#### FCC Radiation Exposure statement

The device has been evaluatec to meel general RF exposure requirement. The device can be used in portable exposure condition without restriction.