

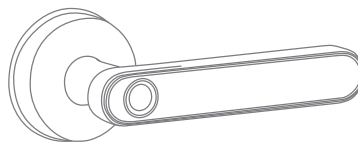
Indoor Smart Lock Instructions

CATALOGUE

1. Check Foundation Accessories	02
2. Installation Step Diagram	03
3. TT-Lock User Manual	05
Product Parameters	05
APP Application Download	06
User Registration and Login	06
Add Door Lock Device	07
Set Up Fingerprint Unlock	08
Set Password To Unlock	09
Other Functions	11
Passage Mode	13
Restore Factory Settings	13
How to Verify	14

1. Check Foundation Accessories

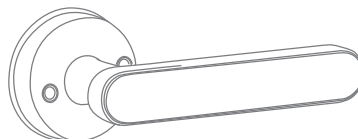
After unpacking the product, check the following accessories .



Front Handle x1



Key X2



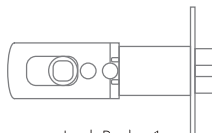
Rear Handle x1



Lock Screw X2



Batteries X4
(Not included)



Lock Body x1



Long Screw X2



Stud X2



Latch Piece x1



Hexagon Wrench X1



Pin X1



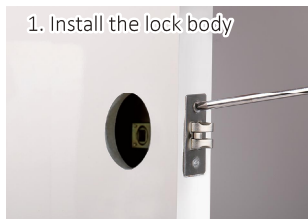
Latch Cover X1



Hollow Square Steel X1

2. Installation Step Diagram

1. Install the lock body



Put the lock body into the corresponding slot and fix the upper and lower screws.

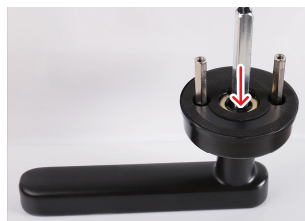
2. Install front handle



Secure the two nut posts to the front handle.



Put the power cord on the front handle through the square steel bar.



Note: Square steel needs to be placed at the bottom.

3. Install the rear handle



Loosen the screws of the rear cover plate with a hexagon wrench and remove the rear cover plate.



Put one end of the power cord through the center hole of the rear handle.

4. Install the battery



Plug in the power cord and install the battery.

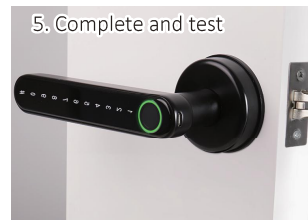


Align the square steel bar, tighten it with long screws, and fix the rear handle.

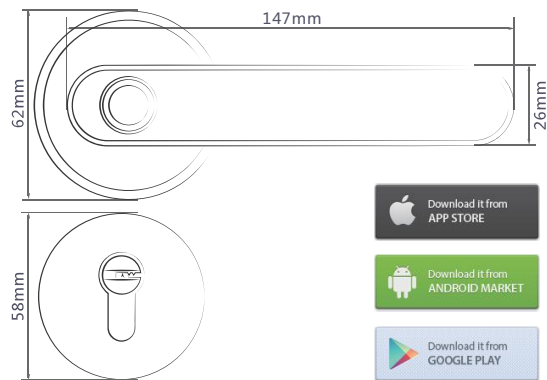


Note: when connecting the power line, the red mark on the terminal block is inserted in the same direction as the port red mark.

5. Complete and test



After installation, check the door opening.



How to open the door : APP, Fingerprint, Password, Key

Number of fingerprints : 100pcs

Number of passwords : APP sends password (Unlimited)
Custom password(150 Groups)

Product material : Zinc alloy lock body, Tempered glass touch screen

Power Supply : Four alkaline batteries

Applicable lock body : Single tongue lock body
Double tongue lock body (standard)

Passage Mode : Door lock status, easy to switch

Low battery reminder : Low battery indicator, red light flashing reminder,
low voltage reminder

Patented design : Independent design, industrial products made into handicrafts.

Product color : Black, brushed nickel, gold; support color customization

APP Application Download

The software (iOS version) can be downloaded from the APP store, and the Android version can be downloaded from the application store of Google play.



APP Store



Google Play

User Registration And Login

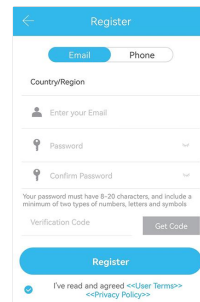
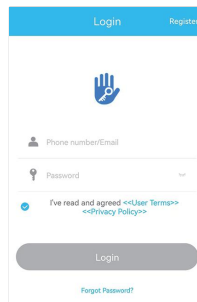
User registration:

On the login page, click "Register" in the upper right corner, enter your mobile phone number or email address, set a password and click Register.

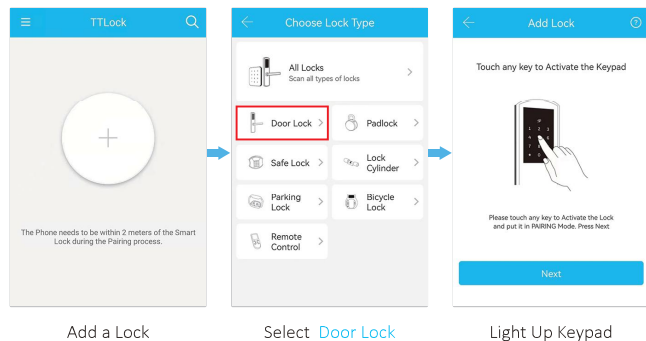
1. User can use phone number or email for registration which supported 159 countries.
2. Verification code will send to phone or email.
3. When the registration is successful, it will jump to home page.

User login:

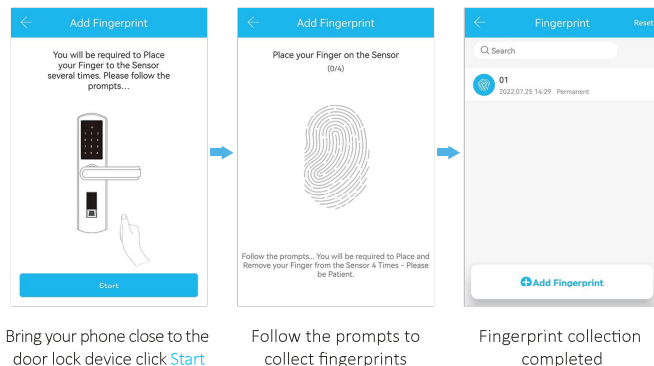
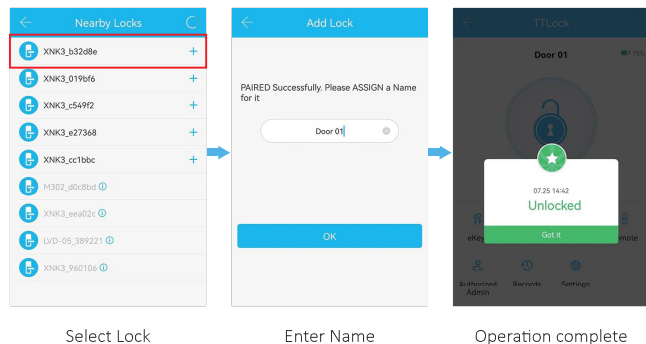
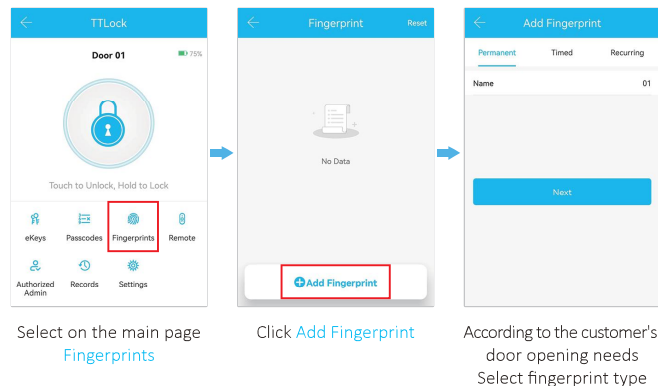
On the login page, enter the account and password, and click "Login"



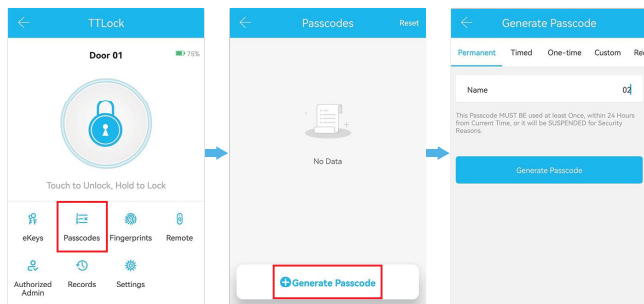
Add Door Lock Device



Set Up Fingerprint Unlock



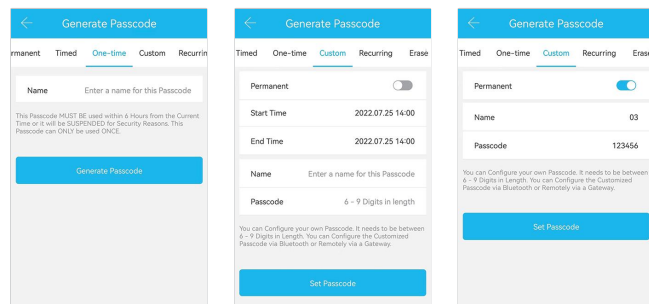
Set Password To Unlock



Select on the main page
Passcodes

Select Generate Password

Select the password type
according to the use
requirements of the door lock

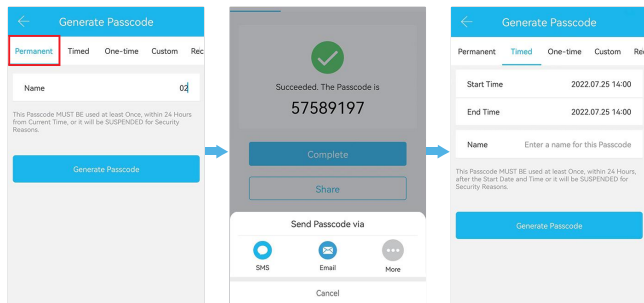


Get One-time password

1. Select One-time
2. Name the password
3. Click Generate Password

Get Custom password

1. Select Custom
2. Set Start Time or End Time or enable permanent option
3. Name the password
4. Set a 6-digit password
5. Click Generate Password

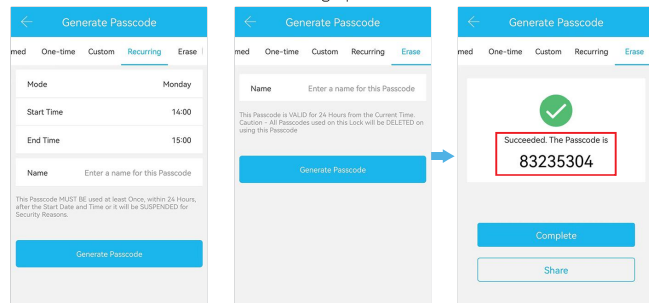


Get Permanent password

1. Select Permanent
2. Name the password
3. Click Generate Password
4. Click finish or share to send password

Get Timed password

1. Select Timed
2. Set Start Time or End Time
3. Name the password
4. Click Generate Password



Get Recurring password

1. Select Recurring
2. Set repeat mode
3. Set Start Time or End Time
4. Name the password
5. Click Generate Password

Erase password

1. Select Erase
2. Enter the password on the door lock device and clear all passwords

Password sharing

1. Select on the main page [eKey](#)
2. Select the type of password to share
3. Choose who to send
4. Click [Send](#)

Timed : The validity period can be set, the shortest is 1 hour and the longest is 3 years. If the validity period is less than one year, the time is accurate to the hour; if the validity period exceeds one year, the time is accurate to the month. The password must be used within 24 hours after it takes effect, otherwise it will automatically expire.

Permanent : Set a password that will always be used from now on. The password must be used within 24 hours after it takes effect, otherwise it will automatically expire.

One-time : Can only be used once and is valid for 1 hour.

Recurring : It can be used repeatedly within the specified time interval, and types such as daily cycle, weekday cycle, and weekend cycle can be set.



Add a remote

1. Select on the main page [Remote](#)
2. Click to add remote
3. Select remote control type Select [Permanent](#), [Timed](#), [Recurring](#)
4. Name the remote and click Next
5. When the light flashes, click Next
6. Linking device
7. Add finished

Authorized Admin

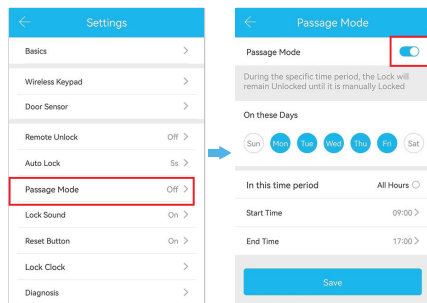
1. Select on the main page [Authorized Admin](#)
2. Click Add Authorized Administrator
3. Select administrator type [Timed](#), [Permanent](#)
4. Fill in the account number and name of the other party
5. Set Start Time or End Time
6. Click [Send](#)

Open door record query

Select on the main page [Records](#)

It is also possible to search the door opening records of a single user.

Passage Mode

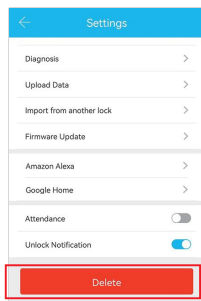


Settings on the APP passage mode

1. Select on the main page [Settings](#)
2. Choose [Passage Mode](#)
3. Open Passage Mode
4. Set opening hours
5. Click [Save](#)

Turn on channel mode by fingerprint

Open the lock by fingerprint (this fingerprint must input at lock), press the digit #123#, then the passage mode is on, freely to in and out. How to off this passage mode, just scan the fingerprint again, then it will be locked.



Restore Factory Settings

1. Delete the device at TT lock app, after click the delete, it need fill your register password and also press # at the panel of lock, then app will show deleted successfully.
2. Press the back panel setup button for 5 seconds to restore the factory settings.



How To Verify Correctly

Language support

Language types:

English, Simplified Chinese, Traditional Chinese, Spanish and other 23 languages.

How to Verify Fingerprint Correctly

Gently press your finger on the fingerprint recognition window, keep your finger flat on the center of the fingerprint collection window, do not slide your finger, and release your finger after successful verification.

How to Verify Password Correctly

After entering the correct password, press "#" to hear the prompt sound "di~". The number light on the password keypad lights up, and the password verification is successful. Press the handle to open the door.

Note: In the online state, to unlock the password, you need to press the "#" key to trigger the numeric keypad.

FCC Statement

This equipment has been tested and found to comply with the limits for a Class B digital device, pursuant to Part 15 of the FCC Rules. These limits are designed to provide reasonable protection against harmful interference in a residential installation. This equipment generates uses and can radiate radio frequency energy and, if not installed and used in accordance with the instructions, may cause harmful interference to radio communications. However, there is no guarantee that interference will not occur in a particular installation. If this equipment does cause harmful interference to radio or television reception, which can be determined by turning the equipment off and on, the user is encouraged to try to correct the interference by one or more of the following measures:

- Reorient or relocate the receiving antenna.
- Increase the separation between the equipment and receiver.
- Connect the equipment into an outlet on a circuit different from that to which the receiver is connected.
- Consult the dealer or an experienced radio/TV technician for help.

This device complies with part 15 of the FCC Rules. Operation is subject to the following two conditions: (1) This device may not cause harmful interference, and (2) this device must accept any interference received, including interference that may cause undesired operation.

Changes or modifications not expressly approved by the party responsible for compliance could void the user's authority to operate the equipment.

The device has been evaluated to meet general RF exposure requirement. The device can be used in portable exposure condition without restriction.