

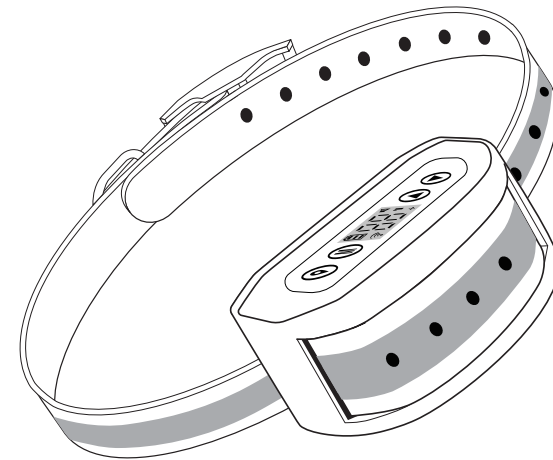
# FOCUSER

**Any issues or concerns you can cont**

**Tech Support:**

FOCUSER@5566mail.com

Model NO.: **PF-09**



GPS Wireless Fence

## User Manual

**NOTE**

GPS Wireless Dog Fence is designed FOR OUTDOOR USE ONLY.

## Table of contents

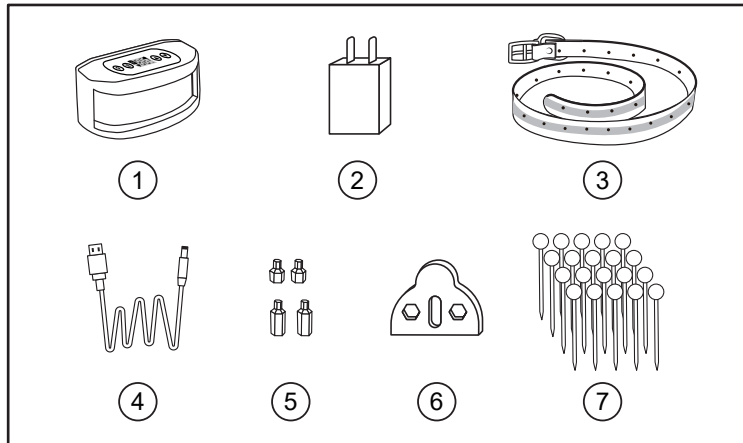
<b>About GPS wireless fence</b> .....	2
<b>Components</b> .....	3
<b>Key Definitions</b> .....	3
<b>Operating Guide</b> .....	4
Step 1: Charge Receiver Collar(s) .....	4
Step 2: Set Up Receiver Collar(s) .....	5
Step 3: Prepare Receiver Collar(s) .....	8
Step 4: Place the Boundary Flags .....	8
Step 5: Fit Receiver Collar(s) .....	10
<b>Training Guide</b> .....	12
<b>Statements</b> .....	12

## About GPS wireless fence



The GPS electronic fence equipment is designed to create a dog park to contain your dog safely playing around in your yard without Digging and Burying Wires. The newly upgraded system can cover 990 meters depending on the Customer's needs. There are four modes of positioning functions (GPS+ BD + Galilean +Glonass), and supporting up to three positioning patterns. The system operates the alarm system (beep/ vibration /shock) to warn dogs while he goes beyond the boundary zone you set up and remains peaceful while pet are within the boundary zone.

## Components



## Key Definitions

- ① GPS Receiver Collar: Designed to transmit and receive the GPS signal to set up the boundary.
- ② Charger: Charges the Receiver Collar(s).
- ③ Collar Belt: Used in conjunction with Receiver Collar(s).
- ④ USB Cable: Connect with the charger to charge the Receiver Collar(s).
- ⑤ Contact Points: Deliver the safe static correction when your pet cross over the boundary.
- ⑥ Test Light: Used with Receiver Collar(s) to test the boundary. The hole on the Test Light can be used as wrench to fix metal probes.
- ⑦ Training Flags: The visual reminders for your pet to know the boundary.

## Operating Guide

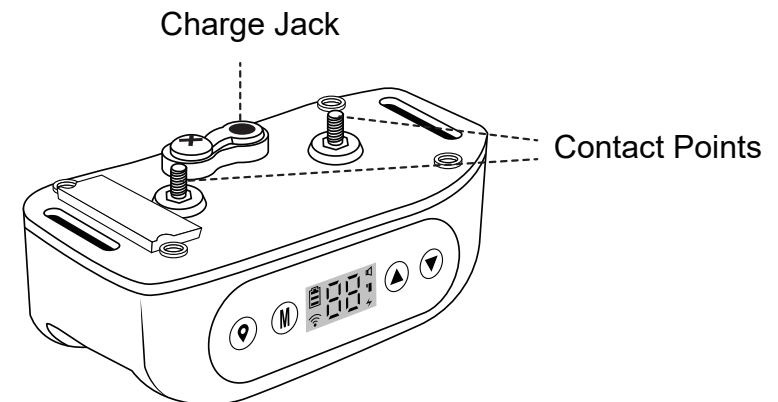
### Step 1: Charge Receiver Collar(s)

The USB Charger is designed to plug into a standard AC wall outlet.

The Collar Light will remain red flickering when the Receiver Collar(s) is charging properly. “🔌”

The light will turn red when charging is complete. “🔋”

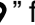
**Battery Status:** The battery power can support device working continuously for 25 hours in the power-on state, and user can press any key to view the battery status in standby state. If the device isn't in use for more than 10 minutes, it will enter deep hibernation state.




### ⚠ IMPORTANT



The icon of the “🔋” will remain flickering when the battery on the receiver is low.


## Step 2: Set Up Receiver Collar(s)



1. Press the power key “” for 3 sec to turn on the device. The display will first flickering “88”, then takes 1-3 minutes wait until the display numbers reaches to six or more. Now, it's ready for next steps.




### TIPS

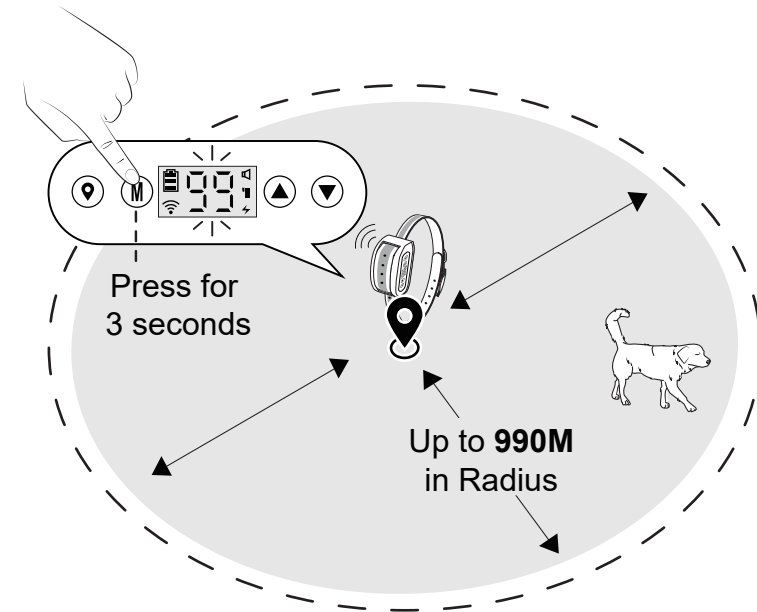
The “” shows signal strength. Please use this system with 2 or more Frames




“” or “” Poor GPS signal, this area is not suitable for GPS wireless system.

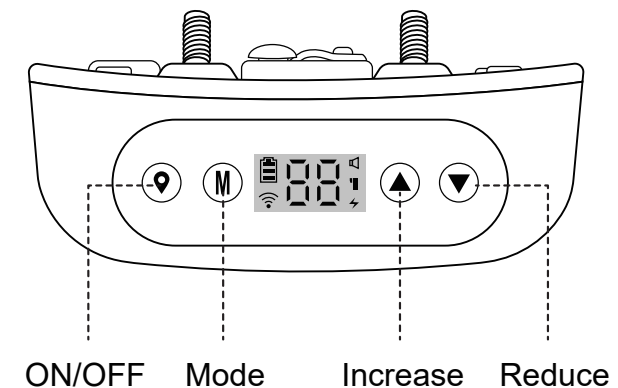
“” : Fair GPS signal, this area is OK but not perfect.

“” or “” : Strong GPS signal, perfect area to set up GPS wireless system.

2. Long Press: Press the mode key “” for 3 sec to enter the distance setting mode, and the flickering number on the screen means radius range. (For example: "03"=30 meters radius range, "10"=100 meters.) You can use the “” and “”keys to adjust the distance accordingly. The system will automatically remember the setting after 5 sec. The "99" will be the maximum, and the largest range will be 990 meters.



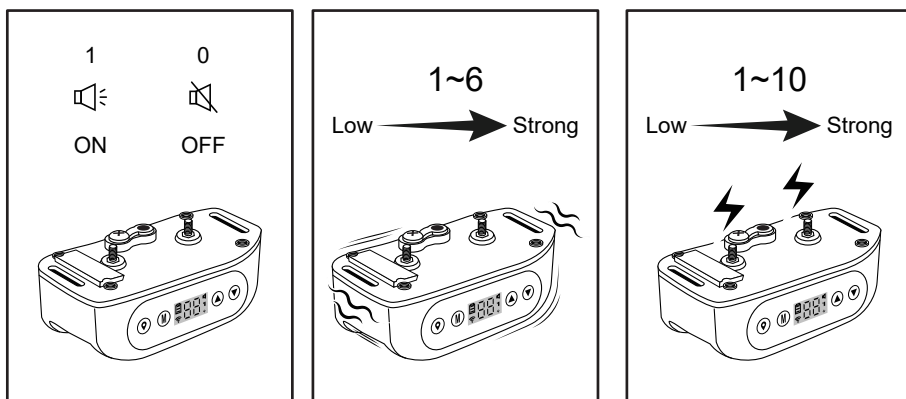
3. Short Press: Press the mode key “” for 1 sec to set the alarm mode (beep, vibration and shock). Use the “” and “” key to adjust the strength of the alarm. After selecting a pattern that works best for your dog reasonably, we can step to train.



Beep Modes: 0~1. With "1", beep mode ON, with "0" for beep OFF.

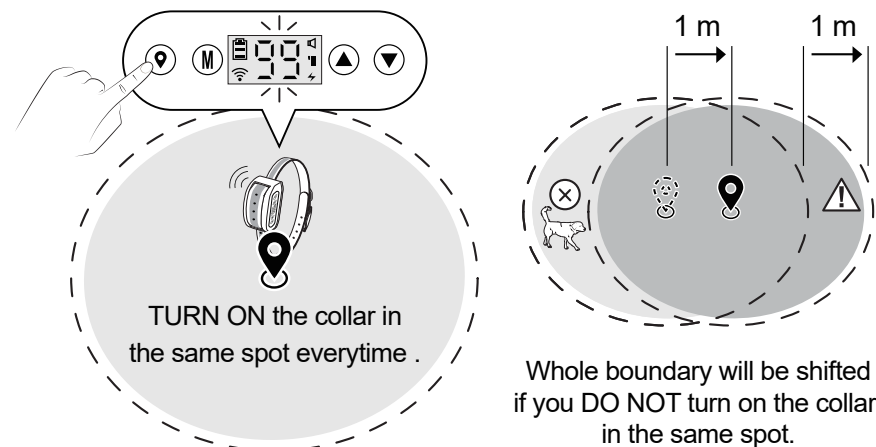
Vibration Modes: 0~6. With "0", the vibration mode off, and 1-6 modes can be set as the corresponding intensity of vibration that pets can receive.

Shock Modes: 0~10. With "0", the shock mode off, and 1-10 modes can be set as the corresponding intensity of shock that pets can receive.



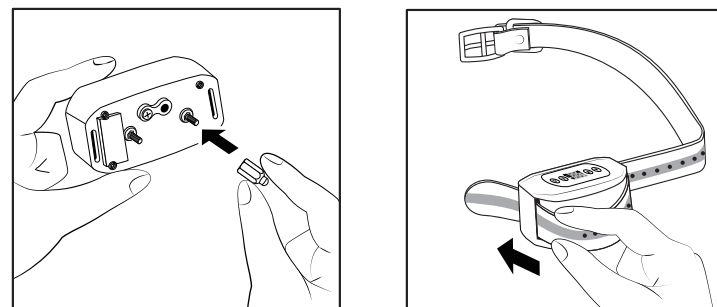
### ⚠ IMPORTANT

Please mark the spot you set up the boundary, it will be the center of the boundary. You will need to TURN ON the collar at the same spot to remain the boundary's fixedness. For example, you turn on the collars 1 meter to the left side, the whole boundary will be shifted 1 meter to the left.



## Step 3: Prepare Receiver Collar(s)

Install the contact Points and Collar Belt for Receiver Collar(s).



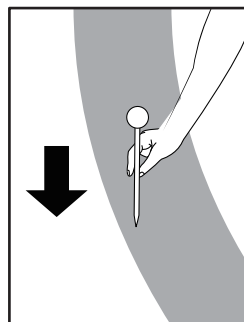
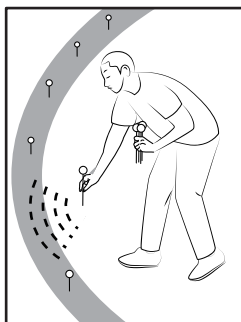
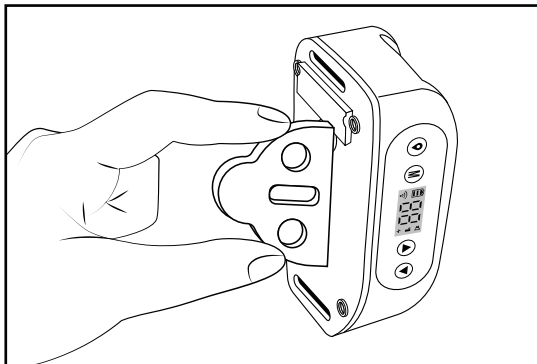
## Step 4: Place the Boundary Flags

The Boundary Flags are visual reminders for your pet to cognize where the Boundary Zone is located. The Receiver Collar(s) will activate within 1-2 feet of the Boundary Flags.

1. Follow the step 2 to set up your desired zone.
2. Using the Test Light, hold the Receiver Collar(s) at your pet's neck height.
3. Walking toward to the edge of the desired zone you set up until the Receiver Collar(s) beeps and the Test Light Flashes.
4. Place a Training Flag in the ground.
5. Walk back into the desired zone until the beeping stops.
6. Repeat this process around the boundary zone until it is marked with Boundary Flags every 10 feet.

## Test light instructions.

1. Make sure the Receiver Collar Battery is properly charged.
2. Hold the Test Light contacts to the Contact Points.



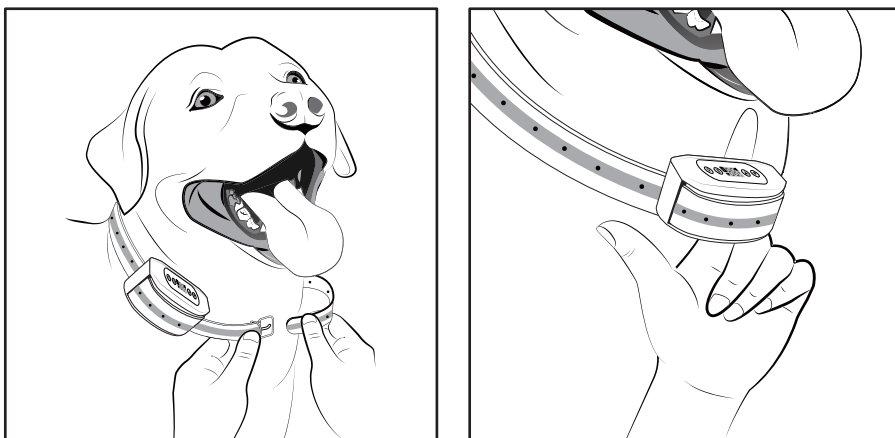
## Step 5: Fit the Receiver Collar(s)

### ⚠ IMPORTANT

- The proper fit and placement of your Receiver Collar is important for effective training. The Contact Points must have direct contact with your pet's skin on the underside of his neck.
- Avoid leaving the Collar on the dog for more than 12 hours per day.
- Check the fit to prevent excessive pressure.
- Never connect a lead to the electronic collar; It will cause excessive pressure on the contacts.
- If a rash or sore is found, discontinue use of the collar until the skin has recovered.
- If the condition persists beyond 48 hours, see your veterinarian.

## To assure a proper fit, please follow steps below:

1. Start with your pet standing comfortably.
2. Center the Contact Points underneath your pet's neck, touching the skin.
3. You may need to trim the hair in the area of the Contact Points, but never shave the dog's neck.
4. Check the tightness of the Receiver Collar by inserting one finger between the end of a Contact Point and your pet's neck. The fit should be snug but not constricting.
5. Trim the Collar Belt to the length fitting your dog's neck.

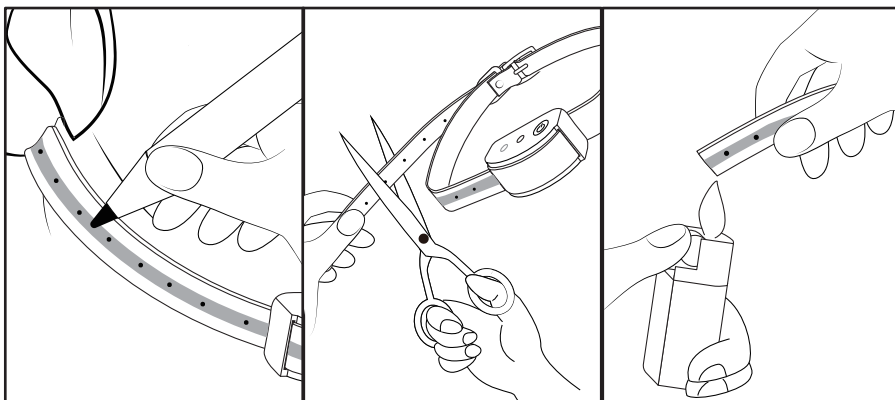


## Training Guide

- Have fun with your pet throughout the training process. Training Should be fun, fair, firm and consistent.
- Train for 10 to 15 minutes at a time. Don't try to do too much or too quickly, More-frequent short sessions are better than less-frequent longer sessions.
- If your pet shows signs of stress, slow down the training time, add additional days of training, or increase the amount of play time with your pet in the Pet Area.
- Finish each training session on a positive note with lots of praise and play.
- Remove the Receiver Collar after each training session.
- During training, if you need to take your pet out of the Pet Area, remove the Receiver Collar or turn off the Receiver Collar.

### Trim the collar as follows:

- Mark the desired length of the Collar with a pen.
- Remove the Receiver Collar from your pet and cut off the excess.
- Seal the edge of the cut collar by applying a flame along the frayed edge.



## Statements

1. The system defaults to the buzzer alarm. When the pet is out of the set boundary, it will activate vibration and electric shock for 7 seconds, and then pause for 7 seconds. It process will repeat three times, if the pet has not returned to the safety area, the system will not perform the electric shock, but the buzzer alarm will still exist, the humanized software settings can avoid any harm to your pet caused during the training. Once the pet return to the boundary, the system will restart the set alarm mode.
2. The strength of GPS signal depends on environmental factors, such as dense woods, high-rise buildings, and cloudy weather, etc.

## FCC Statement

This device complies with part 15 of the FCC Rules. Operation is subject to the following two conditions: (1) This device may not cause harmful interference, and (2) this device must accept any interference received, including interference that may cause undesired operation.

This equipment has been tested and found to comply with the limits for a Class B digital device, pursuant to part 15 of the FCC Rules. These limits are designed to provide reasonable protection against harmful interference in a residential installation. This equipment generates, uses and can radiate radio frequency energy and, if not installed and used in accordance with the instructions, may cause harmful interference to radio communications. However, there is no guarantee that interference will not occur in a particular installation. If this equipment does cause harmful interference to radio or television reception, which can be determined by turning the equipment off and on, the user is encouraged to try to correct the interference by one or more of the following measures:

- Reorient or relocate the receiving antenna.
- Increase the separation between the equipment and receiver.
- Connect the equipment into an outlet on a circuit different from that to which the receiver is connected.
- Consult the dealer or an experienced radio/TV technician for help.

Caution: Any changes or modifications to this device not explicitly approved by manufacturer could void your authority to operate this equipment.

### RF Exposure Information

The device has been evaluated to meet general RF exposure requirement. The device can be used in portable exposure condition without restriction.