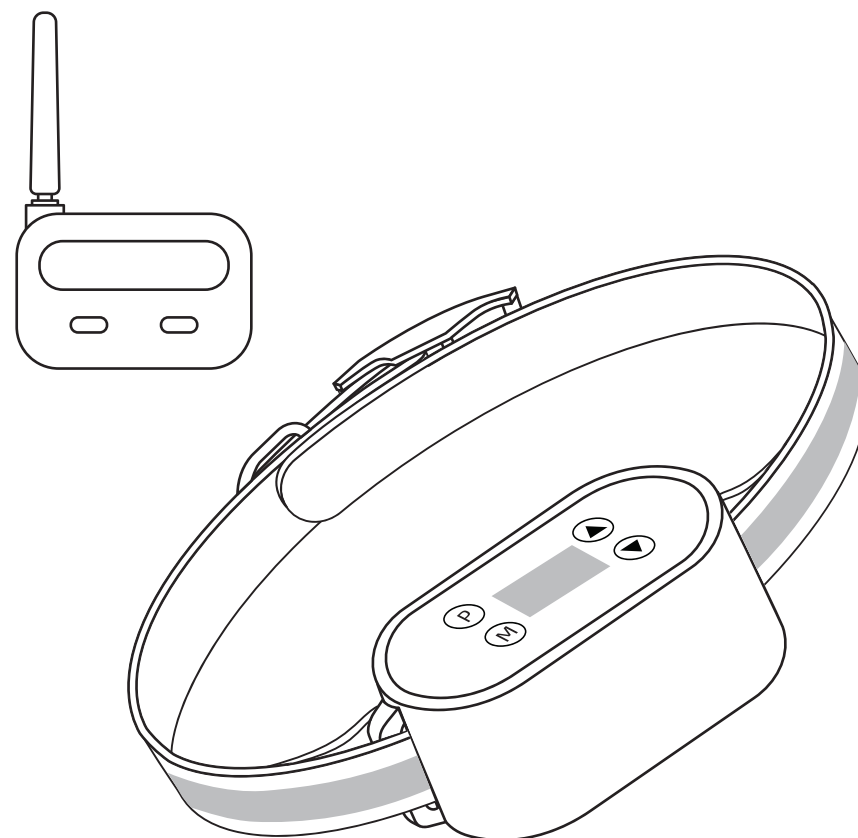


**Any issues or concerns you can contact  
Tech Support:**

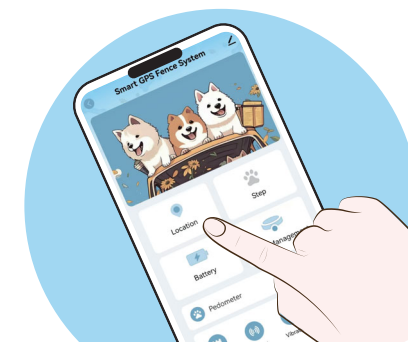
FOCUSER@5566mail.com

Model NO.: **AG-19**



**Smart Pet Fence System**

**User Manual**



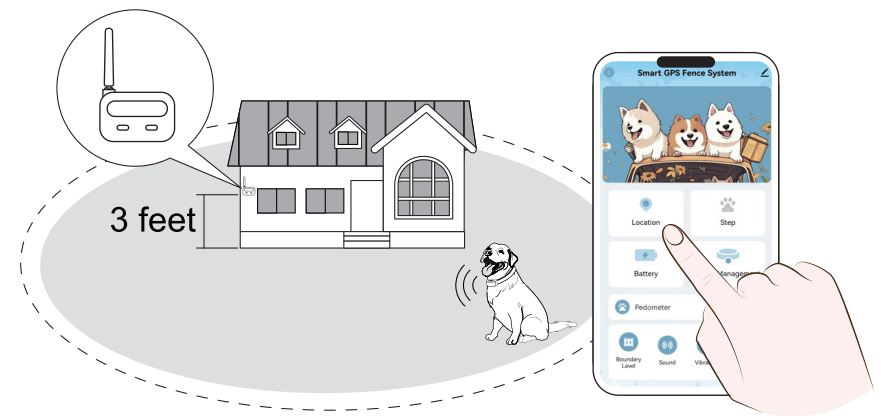
## NOTE

GPS Collar is designed FOR OUTDOOR USE ONLY.

## Table of contents

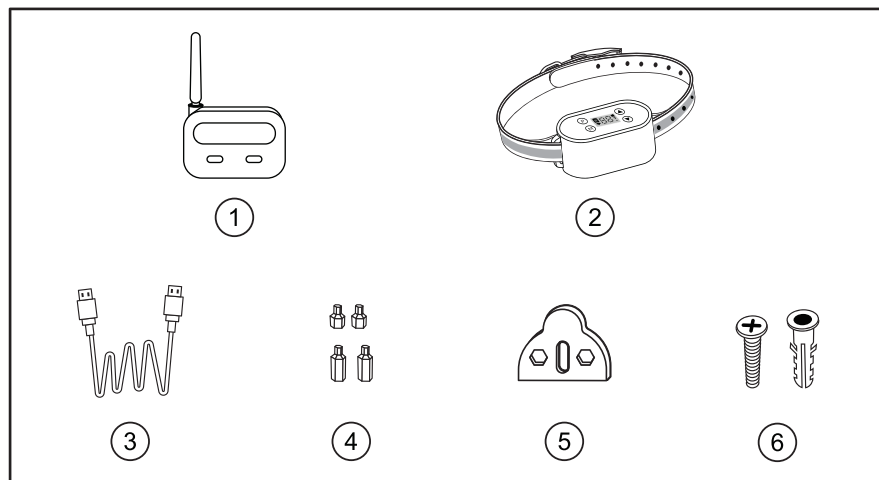
<b>About GPS Collar</b> .....	2
<b>Components</b> .....	3
<b>Operating Guide</b> .....	4
Step 1: Pair up the transmitter and collar(s) .....	4
Step 2: Connect to the Mobile APP .....	6
Step 3: Setting the GPS Collar receiver .....	9
Step 4: Fit the Receiver Collar(s) .....	11
<b>Training Guide</b> .....	13
<b>Statements</b> .....	14

## About Smart GPS Fence System



The Smart GPS Fence System equipment is designed to create a dog park to contain your dog safely playing around in your yard without Digging and Burying Wires. Additionally, you can use your smartphone to monitor your dog's location, track its activity levels, set boundaries and alarm modes such as sound, vibration and shock levels. If your dog goes missing, you can locate its last known position and check the collar's battery level. The system will also remind you to recharge the collar in a timely manner, preventing it from powering off due to a depleted battery.

## Components



## Key Definitions

- ① Transmitter: Designed to transmit the signals.
- ② GPS collar receiver: Designed to receive the GPS and transmitter signals.
- ③ Charging Cable: Connect with the charger to charge the Receiver Collar(s).
- ④ Contact Points: Deliver the safe static correction when your pet cross over the boundary.
- ⑤ Test Light: Used with Receiver Collar(s) to test the boundary. The hole on the Test Light can be used as wrench to fix metal probes.
- ⑥ Screws: Used for setting up the transmitter on the wall.

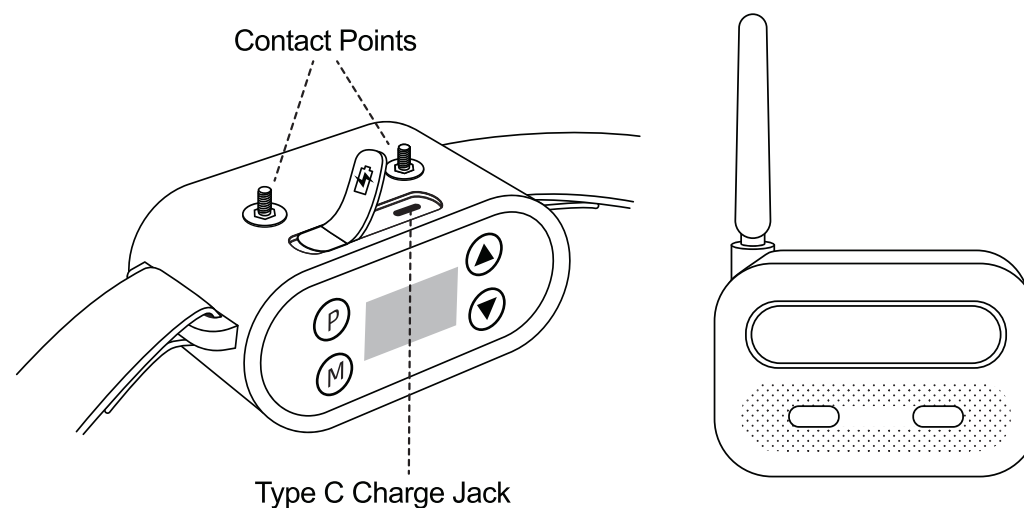
## Operating Guide

### ⚠ NOTICE


**Factory-paired. You can skip the pairing step and directly proceed to Step 2 to connect to the Wi-Fi.**

### Step 1: Pair up the transmitter and collar(s)

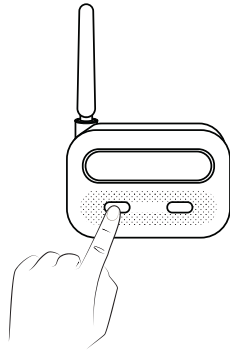
1. Charge the transmitter and collar.



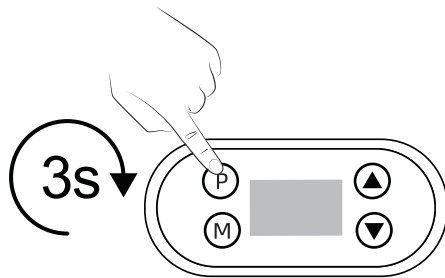
### ⚠ IMPORTANT

The icon of the “” will remain flickering when the battery on the receiver is low.

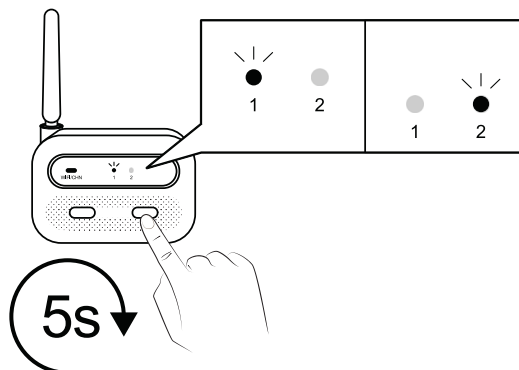
2. Press the left button on the transmitter to power it on.



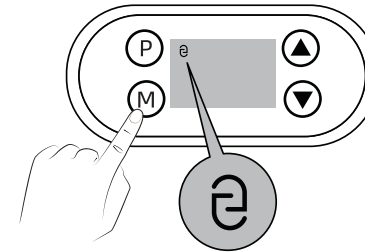
3. Press and hold the "P" button on the GPS collar receiver for 3 seconds to turn it on.



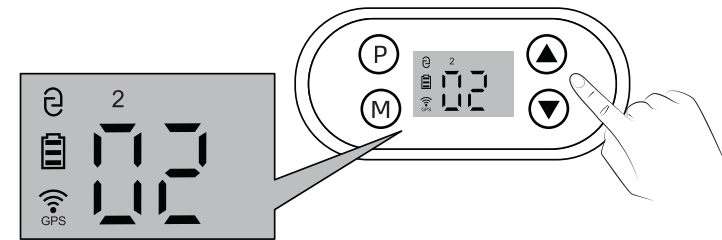
4. Press and hold the right button on the transmitter for 5 seconds, and the LED lights will cycle through a flashing sequence.



5. Press the M button on the GPS collar receiver, and the pairing icon will be displayed.



6. Use the up and down buttons to select the GPS collar number (collar1, collar 2...or collar 5). Once selected, the transmitter LED will flash and then remain steadily light.



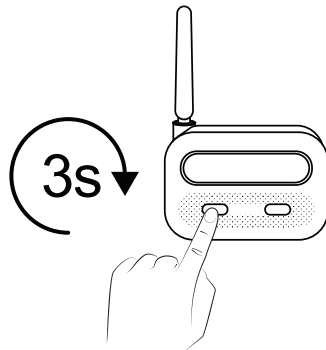
## Step 2: Connect to the Mobile APP

1. Turn on your phone's Wi-Fi and select a 2.4GHz Wi-Fi network.
2. Scan the QR code or download the Tuya Smart app.



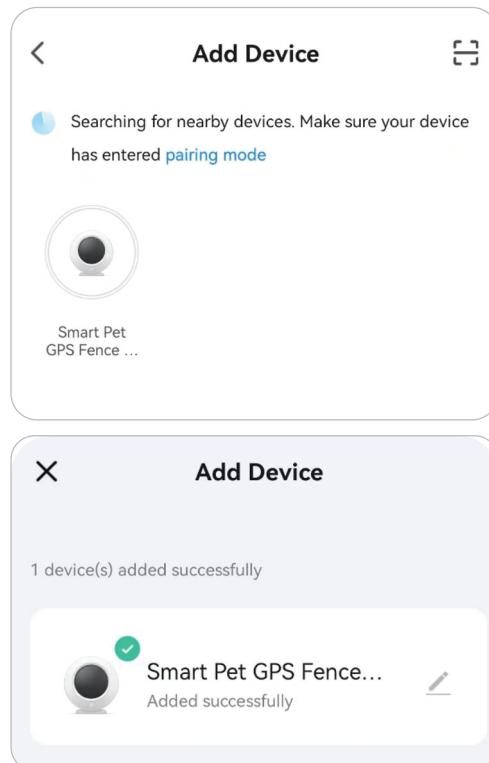
3. Open the app and navigate to the first interface

4. Press and hold the left button on the receiver for 3 seconds to initiate the connection process (the transmitter will beep three times).

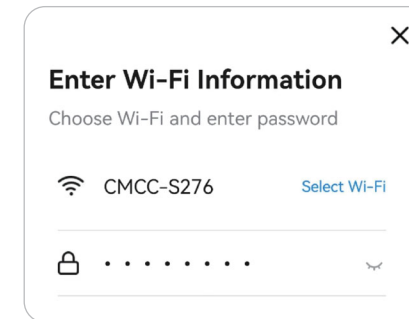


5. Tap "Discover Devices" on the app interface.

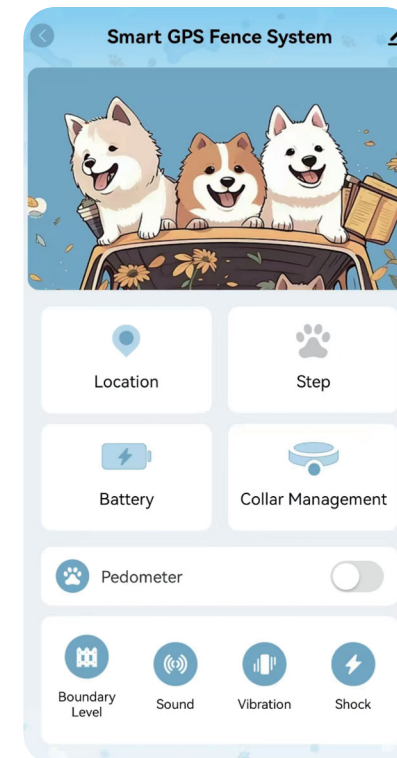
6. Add the "Smart GPS Pet Fence" device.



7. After approximately 10 seconds, the system will display the Wi-Fi name and password. Enter the corresponding Wi-Fi credentials, and the interface will indicate a successful connection.



8. Configure relevant features through the app, such as step counting, location tracking, virtual fence distance settings, and alert modes.



### Step 3: Setting the GPS Collar receiver

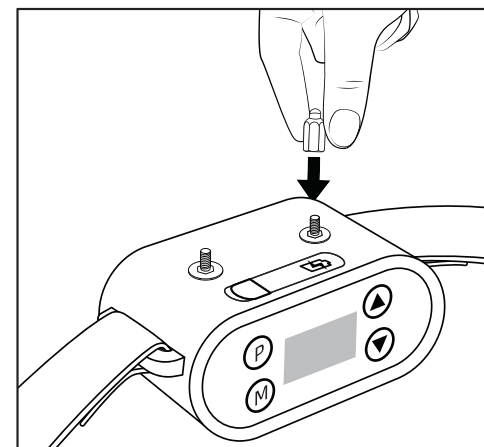
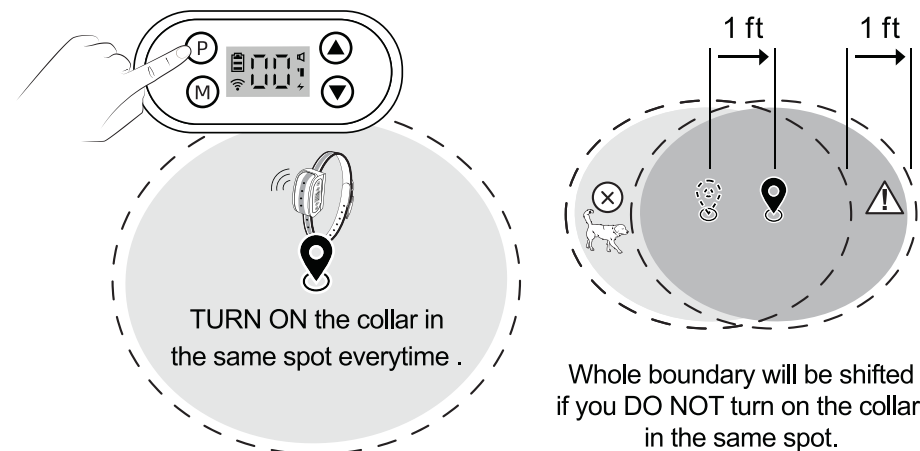
1. Set the GPS Collar Place the collar outside and mark the original starting point (this will serve as the boundary circle's center).
2. The display will initially show "00". Wait for 1–3 minutes until it displays a number between 1 and 32 (this indicates the signal strength).
3. Press and hold the Mode key (M) to cycle through distance settings. The display will flash numbers ranging from 2 to 30 (e.g., 2 corresponds to 20 meters, 3 to 30 meters, and so on, up to 30 for 300 meters). Begin testing from the shortest distance.
4. Briefly press the Mode key to configure the alert modes, including sound, shock, and vibration settings.

#### ⚠ IMPORTANT

Please mark the spot you set up the boundary, it will be the center of the boundary. You will need to TURN ON the collar at the same spot to remain the boundary's fixedness. For example, you turn on the collars 1ft to the left side, the whole boundary will be shifted 1ft to the left.

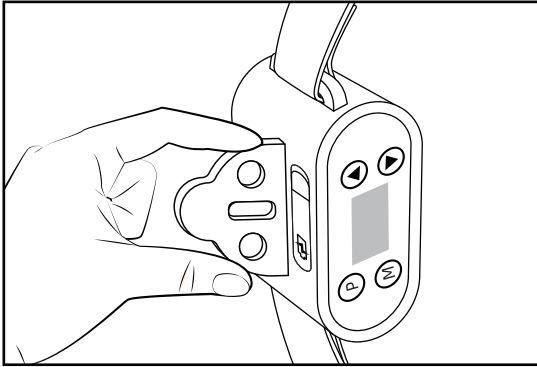
#### ⚠ NOTICE

Every time the device restarts, it will default to the new location as the original point. When shutdown, the system will automatically save the set distance and alarm mode.



## Test light instructions.

1. Make sure the Receiver Collar Battery is properly charged.
2. Hold the Test Light contacts to the Contact Points.



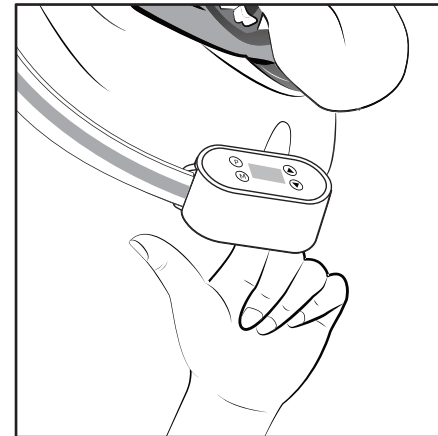
## Step 4: Fit the Receiver Collar(s)

### ⚠ IMPORTANT

- The proper fit and placement of your Receiver Collar is important for effective training. The Contact Points must have direct contact with your pet's skin on the underside of his neck.
- Avoid leaving the Collar on the dog for more than 12 hours per day.
- Check the fit to prevent excessive pressure.
- Never connect a lead to the electronic collar; It will cause excessive pressure on the contacts.
- If a rash or sore is found, discontinue use of the collar until the skin has recovered.
- If the condition persists beyond 48 hours, see your veterinarian.

## To assure a proper fit, please follow steps below:

1. Start with your pet standing comfortably.
2. Center the Contact Points underneath your pet's neck, touching the skin.
3. You may need to trim the hair in the area of the Contact Points, but never shave the dog's neck.
4. Check the tightness of the Receiver Collar by inserting one finger between the end of a Contact Point and your pet's neck. The fit should be snug but not constricting.
5. Trim the Collar Belt to the length fitting your dog's neck.



## Trim the collar as follows:

- Mark the desired length of the Collar with a pen.
- Remove the Receiver Collar from your pet and cut off the excess.
- Seal the edge of the cut collar by applying a flame along the frayed edge.

## Training Guide

- Have fun with your pet throughout the training process. Training Should be fun, fair, firm and consistent.
- Train for 10 to 15 minutes at a time. Don't try to do too much or too quickly, More-frequent short sessions are better than less-frequent longer sessions.
- If your pet shows signs of stress, slow down the training time, add additional days of training, or increase the amount of play time with your pet in the Pet Area.
- Finish each training session on a positive note with lots of praise and play.
- Remove the Receiver Collar after each training session.
- During training, if you need to take your pet out of the Pet Area, remove the Receiver Collar or turn off the Receiver Collar.

## Statements

1. The system defaults to the buzzer alarm. When the pet is out of the set boundary, it will activate vibration and electric shock for 7 seconds, and then pause for 7 seconds. It process will repeat three times, if the pet has not returned to the safety area, the system will not perform the electric shock, but the buzzer alarm will still exist, the humanized software settings can avoid any harm to your pet caused during the training. Once the pet return to the boundary, the system will restart the set alarm mode.
2. The strength of GPS signal depends on environmental factors, such as dense woods, high-rise buildings, and cloudy weather, etc.
3. The "📶" icon: The continuous flickering "📶" indicates that the device is searching for satellites signals; no flickering of "📶" suggests that the device has picked up the satellite signals and is prepared to position.
4. The "⏻" icon: When this icon flickers, it indicates the device is set off and the screen can be shut down to enter the power-saving mode.



FCC Warning:

This equipment has been tested and found to comply with the limits for a Class B digital device, pursuant to part 15 of the FCC Rules. These limits are designed to provide reasonable protection against harmful interference in a residential installation. This equipment generates, uses and can radiate radio frequency energy and, if not installed and used in accordance with the instructions, may cause harmful interference to radio communications. However, there is no guarantee that interference will not occur in a particular installation. If this equipment does cause harmful interference to radio or television reception, which can be determined by turning the equipment off and on, the user is encouraged to try to correct the interference by one or more of the following measures:

- Reorient or relocate the receiving antenna.
- Increase the separation between the equipment and receiver.
- Connect the equipment into an outlet on a circuit different from that to which the receiver is connected.
- Consult the dealer or an experienced radio/TV technician for help.

Caution: Any changes or modifications to this device not explicitly approved by manufacturer could void your authority to operate this equipment.

This device complies with part 15 of the FCC Rules. Operation is subject to the following two conditions:

(1) This device may not cause harmful interference, and (2) this device must accept any interference received, including interference that may cause undesired operation.

This equipment complies with FCC radiation exposure limits set forth for an uncontrolled environment. This equipment should be installed and operated with minimum distance 20cm between the radiator and your body.