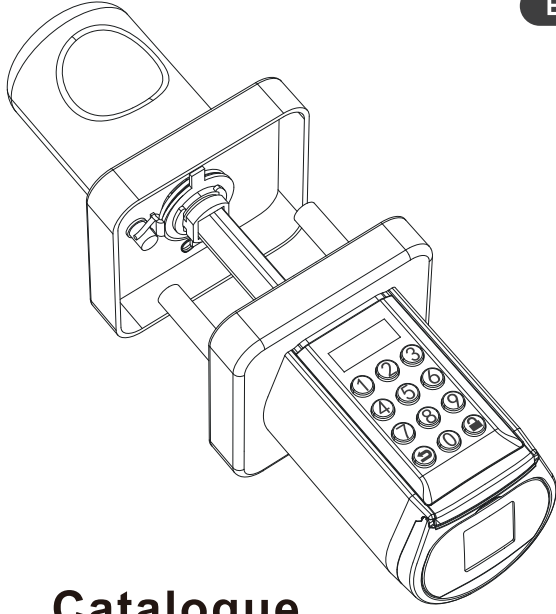


# PCB10KEY32

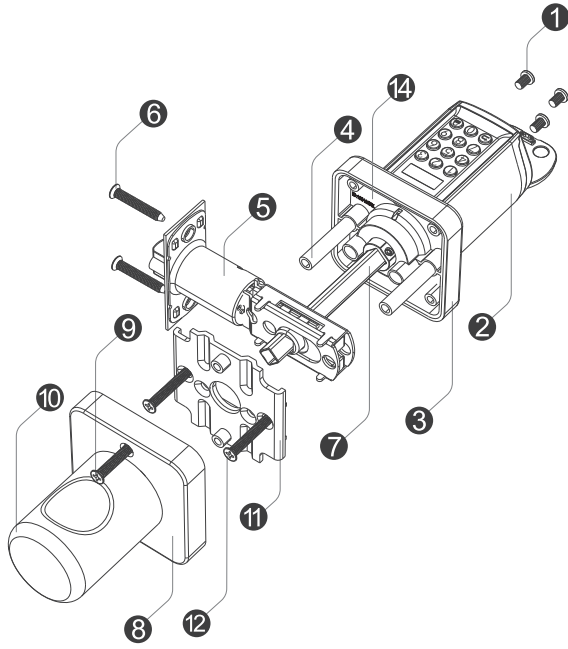
## Instruction

English



### Catalogue

- Part list figure .....01
- Accessories list(TOOL BOX) .....02
- Install battery .....03  
Operating instruction
- Unlock and lock .....04  
Uresetting diagram
- Installation diagram .....05
- Passcode:Flow chart .....06
- RFID card:Flow chart
- Other settings:Flow chart
- Applicable size .....08  
Product Introductio
- Bluetooth activation and login instructions .....09  
Log in to the app
- Bind the device .....10
- Specifications .....11  
FAQ

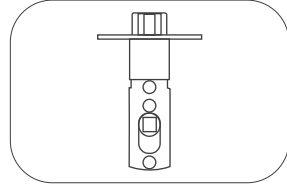


### PART LIST FIGURE

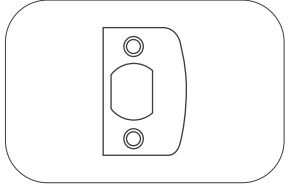
- ① Screws for battery compartment
- ② Front Handle
- ③ Front Panel
- ④ Screw casing
- ⑤ Lockbody
- ⑥ Scerws for lock body
- ⑦ Toggle lever
- ⑧ Rear Panel
- ⑨ Scerws for rear Panel
- ⑩ Rear handle
- ⑪ Mounting bracket
- ⑫ Mounting bracket screw
- ⑭ Product ID

- 01 -

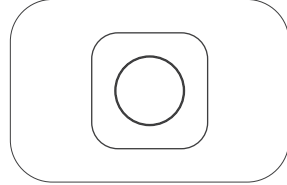
### Accessories list(TOOL BOX)



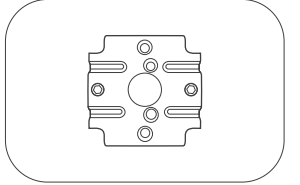
Single latch lock body\*1



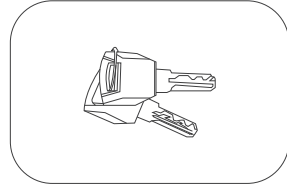
Gusset\*1



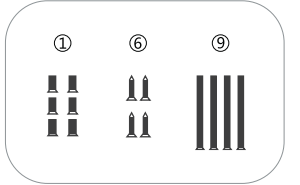
Stickers\*2  
(Used to cover the door hole)



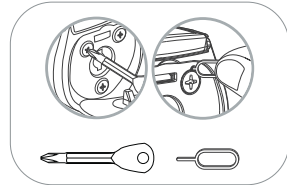
Mounting bracket\*1



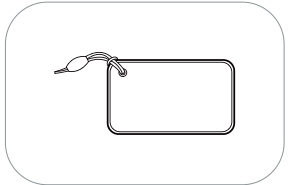
KEY\*2



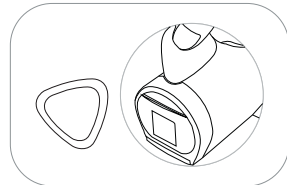
Fixing screw\*14



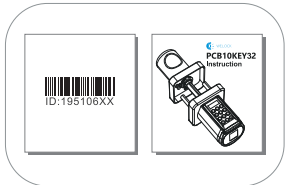
Phillips screwdriver & Thimble



RFID Card\*3



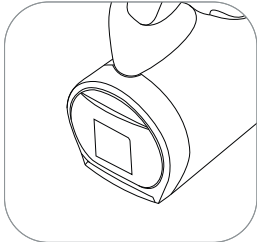
Battery installation  
assistance tool\*1



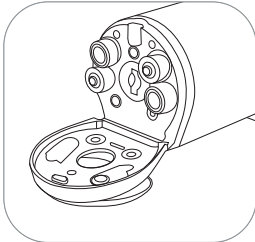
Product ID\*1 Manual\*1

- 02 -

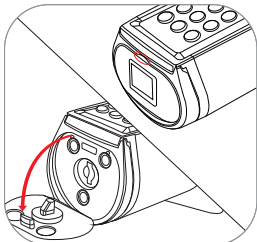
### Install battery



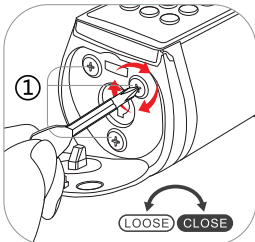
1.Insert the battery installation  
assistance tool and rotate to  
open the battery  
compartment cover



2.Install battery



3.Open the silicone cover



4.Tighten the screws

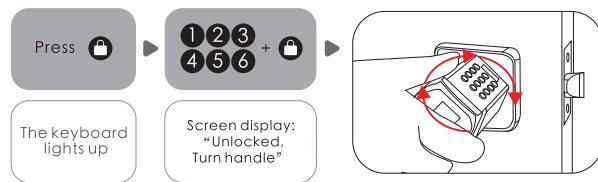
### Operating instruction

- 1) Enter the wrong passcode 5 times continuously, the system is locked for three minutes and cannot operate.
- 2) Press to wake up the keyboard+10 digits temporary passcodeEnter the wrong passcode 5 times continuously, the system is locked for three minutes and the cannot operate.Temporary passcode generation needs to be done in the App.The time on the screen should be the same as the time on the phone,otherwise the temporary passcode will be invalid
- 3) Press to wake up the keyboard+swipe the IC cards Swipe the unmatched card 5 times continuously,the system is locked for three minutes and the cannot operate.Any IC card can unpock the door in factory state.
- 4) Bind the lock on APP  
Bind the lock on APP via Bluetooth, click "unlock", and the phone yime will be synchronized to the lock via Bluetooth.

- 03 -

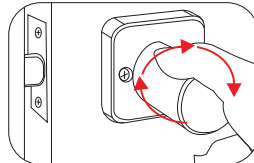
### Unlock and lock

Unlock the door from outside You can unlock the door in any direction

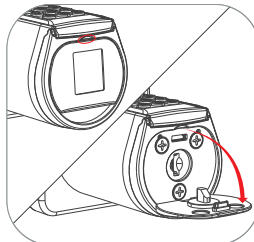


The rear handle can be turned left or right 90° .

To protect the lock not be damaged by torsion forcefully



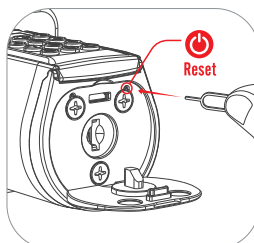
### Uresetting diagram



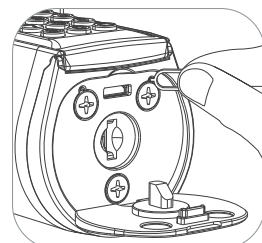
1.Opening the silicone cover



2. Find the Thimble in the  
attached accessories



3.Find the hole where the reset  
button is located

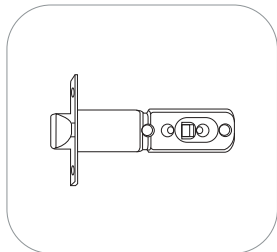


4.Insert the thimble into the hole  
and press the reset button

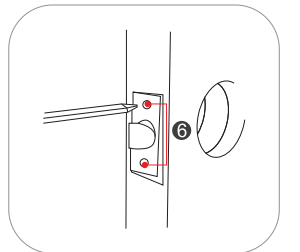
- 04 -

### Installation diagram

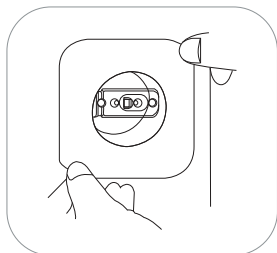
2.1 Picture of installation Inward opening door:The inclined surface of the bolt face outwards when installing



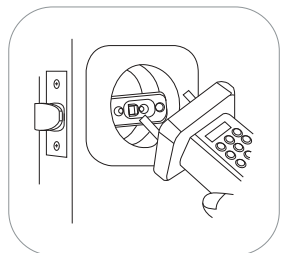
1.The length of the lock  
body can be adjusted  
according to the diameter  
of the keyhole



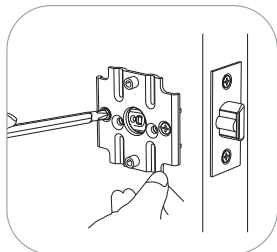
2.Install the lock body and  
tighten the screws



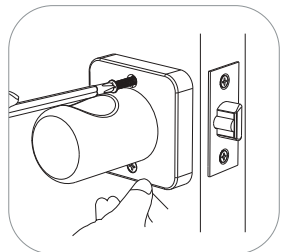
3.Place the lock body and  
tighten the screws



4.Install outdoor



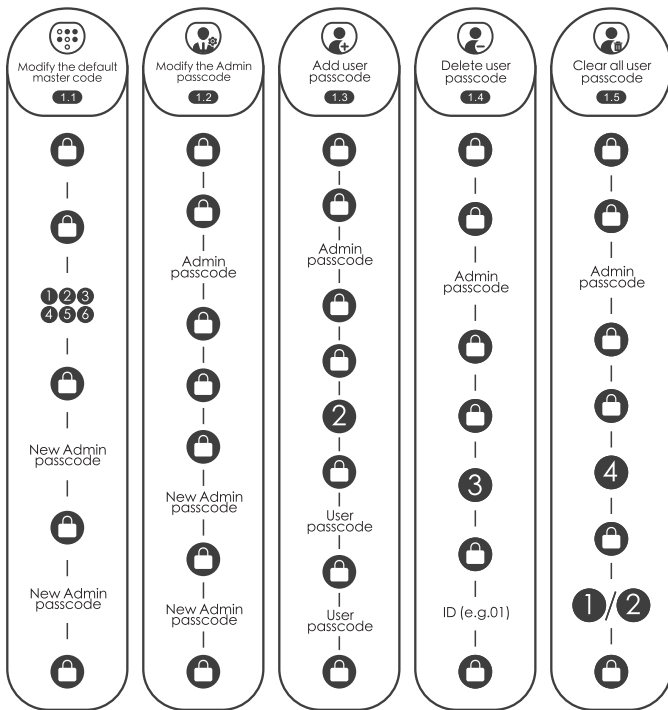
5.Install the mounting  
bracket and tighten the  
mounting bracket screws



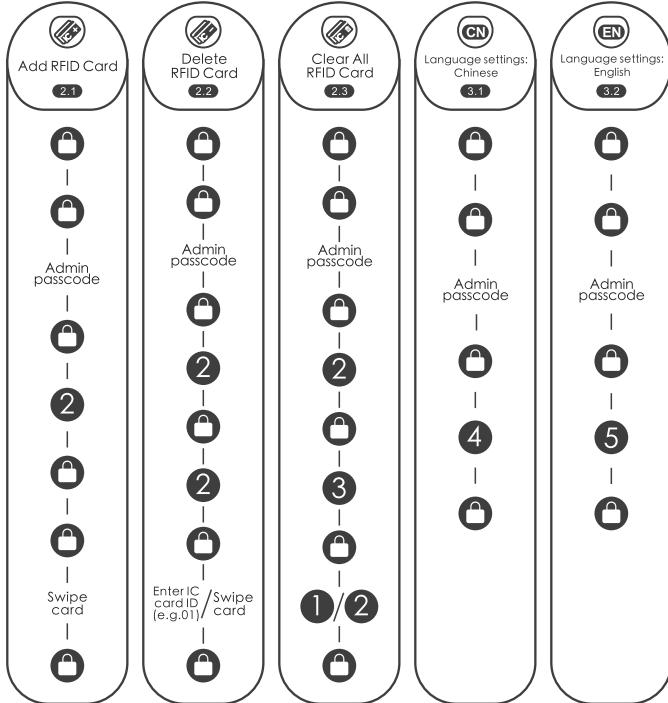
6.Install the rear panel  
handle and tighten  
the screws

- 05 -

### 1.Passcode:Flow chart

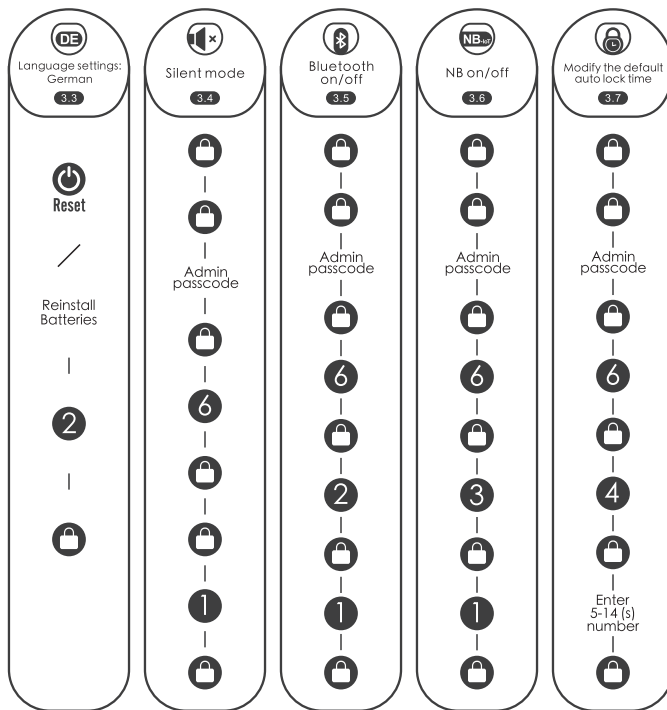


### 2.RFID card: Flow char

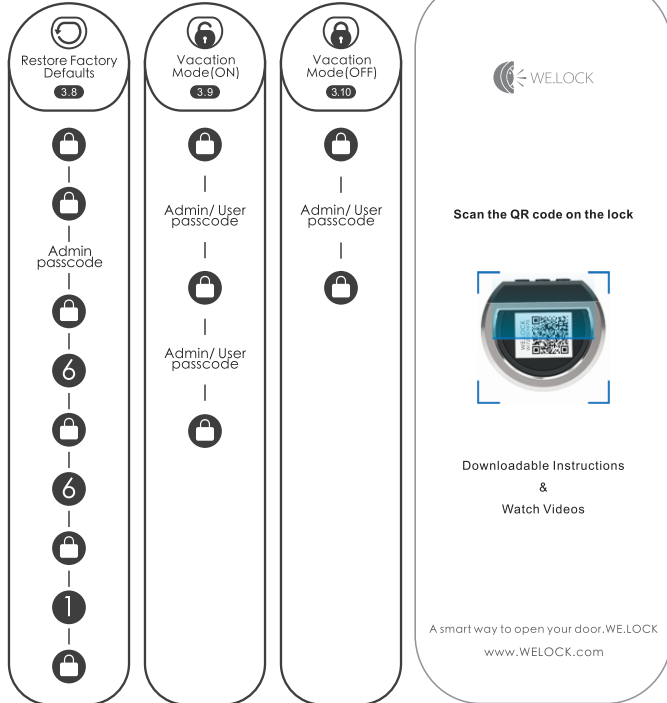


- 06 -

### 3.Other settings: Flow chart

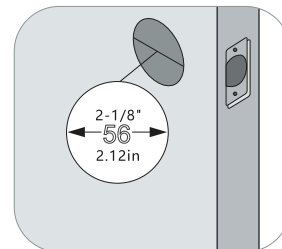


### 3.Other settings: Flow chart

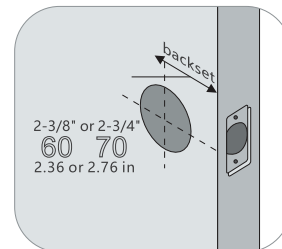


- 07 -

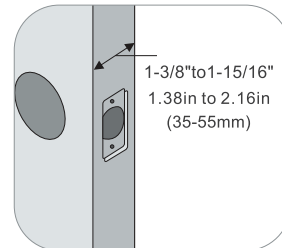
### Applicable size



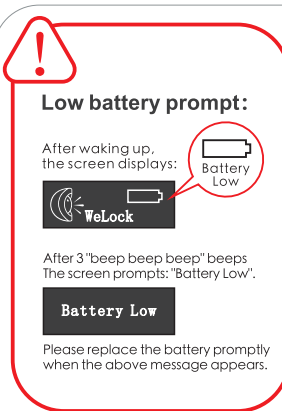
1.Measure to confirm that the hole in the door is 2-1/8" (2.12in)



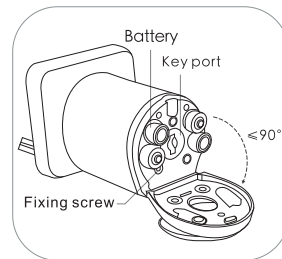
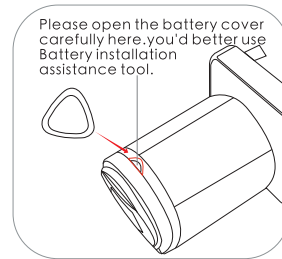
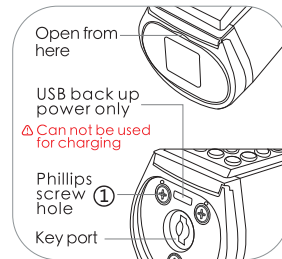
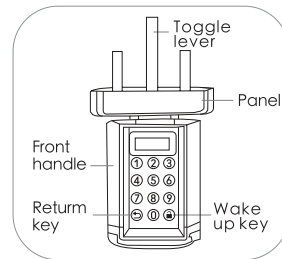
2.Measure to confirm that backset is either 2-3/8" or 2-3/4" (2.36or2.76in)



3.Measure to confirm that the door is 1-3/8" to 2" (1.36in to 1.97in)



### Product Introduction



- 08 -

### Bluetooth activation and login instructions

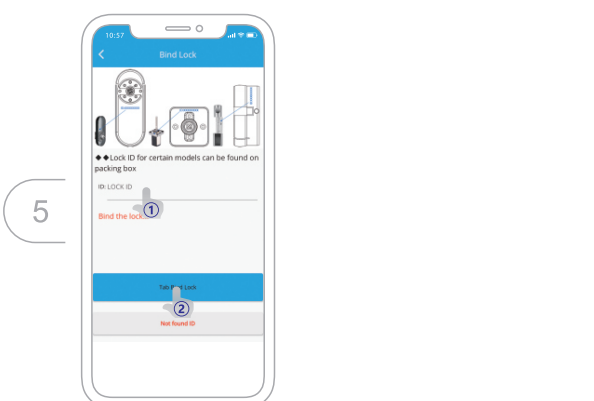
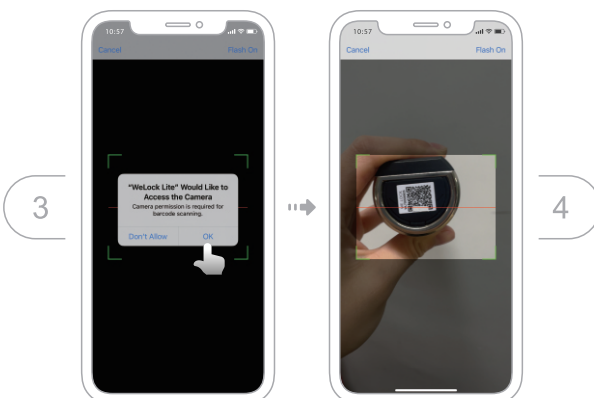
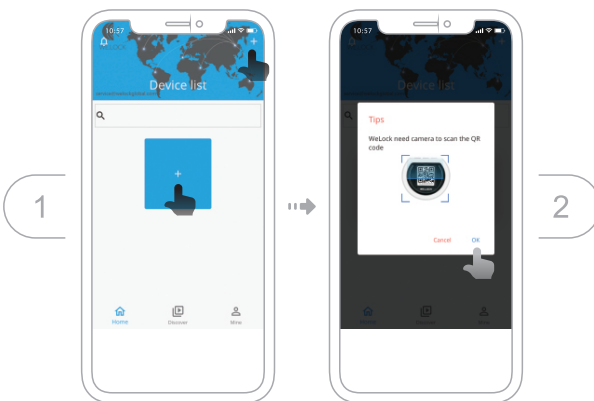
Scan the QR code on the lock.



Select "Android/iOS" to download.



### Bind the device



### FAQ

- How often is the battery changed?**  
When the low battery alarm occurs, the battery needs to be replaced in time.
- When will the low battery alarm?**  
The battery is below 20%.
- How can enter scramble code?**  
Enter any number before and after a correct passcode, 30 digits or less.
- How can unlock when the battery runs out?**  
Users can use a mobile power supply to power the lock via a micro USB cable, and then use our App to unlock.
- How can contact customer service?**  
Please contact this email: Service@WelockGlobal.com

### FCC WARNING

This device complies with part 15 of the FCC Rules. Operation is subject to the following two conditions: (1) This device may not cause harmful interference, and (2) this device must accept any interference received, including interference that may cause undesired operation.

Any Changes or modifications not expressly approved by the party responsible for compliance could void the user's authority to operate the equipment.

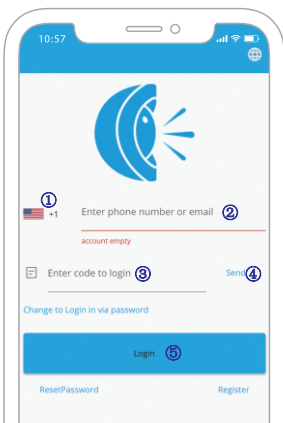
NOTE: This equipment has been tested and found to comply with the limits for a Class B digital device, pursuant to part 15 of the FCC Rules. These limits are designed to provide reasonable protection against harmful interference in a residential installation. This equipment generates uses and can radiate radio frequency energy and, if not installed and used in accordance with the instructions, may cause harmful interference to radio communications. However, there is no guarantee that interference will not occur in a particular installation. If this equipment does cause harmful interference to radio or television reception, which can be determined by turning the equipment off and on, the user is encouraged to try to correct the interference by one or more of the following measures:

- Reorient or relocate the receiving antenna.
- Increase the separation between the equipment and receiver.
- Connect the equipment into an outlet on a circuit different from that to which the receiver is connected.
- Consult the dealer or an experienced radio/TV technician for help.

The device has been evaluated to meet general RF exposure requirement. The device can be used in portable exposure condition without restriction.

### Log in to the app

- Select your country/region
- Enter the phone number/email to get the verification code
- Click"Send"
- Enter the verification code after receiving the message
- Click"Login"



- 09 -

- 10 -

- 11 -