



Smart Feeder AI

AI-B20



English

中文

日本語

Deutsch

français

Español

русский язык

한국어

Material list



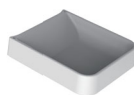
①
Host



②
Food bin



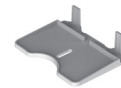
③
Grain bin cover



④
Food bowl



⑤
Protective cover

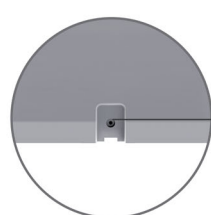
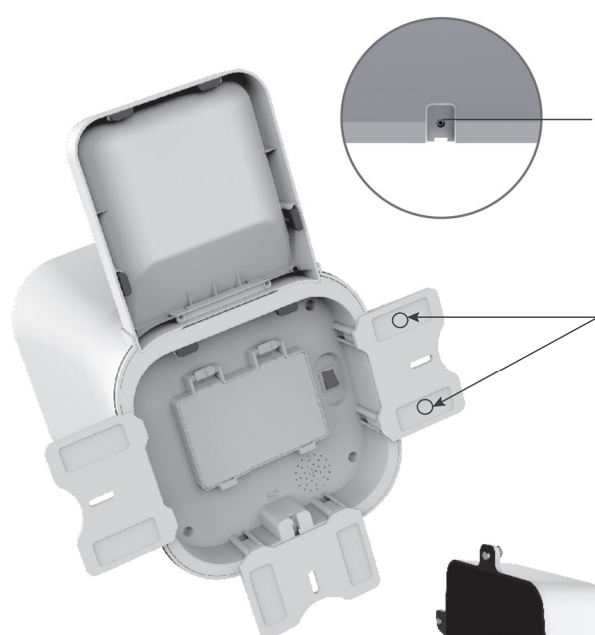
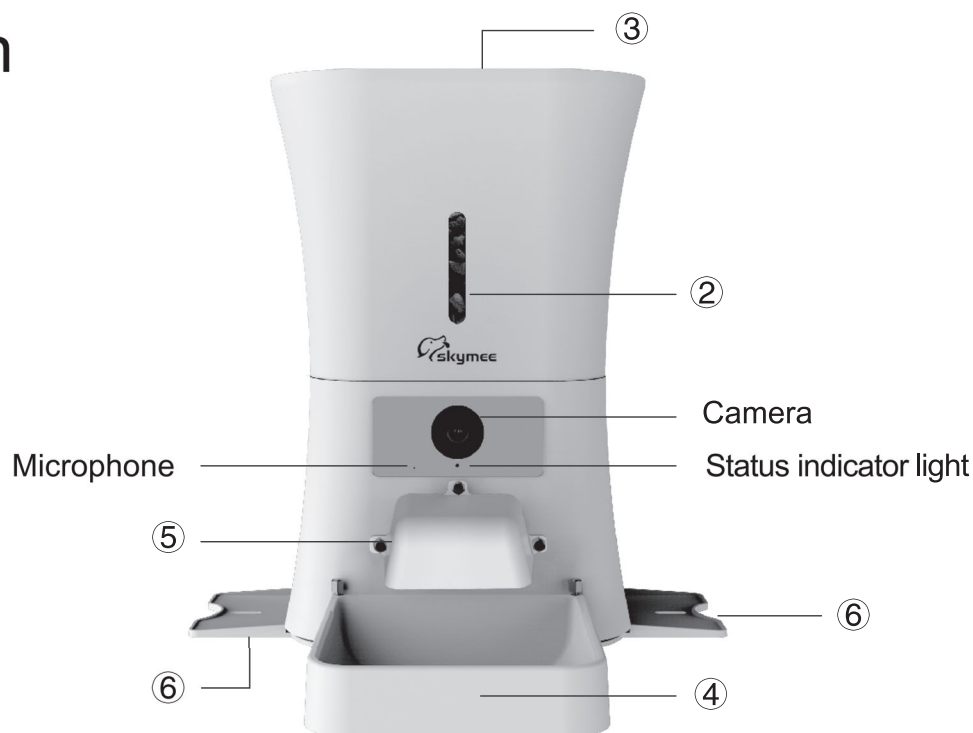


⑥
Stable foot pedestal *3



⑦
Power adapter

Component Description



RST hole



Power port

Battery switch

Make sure that the position of the feeder is not moved any more, and use double-sided adhesive tape to fix it



⑤

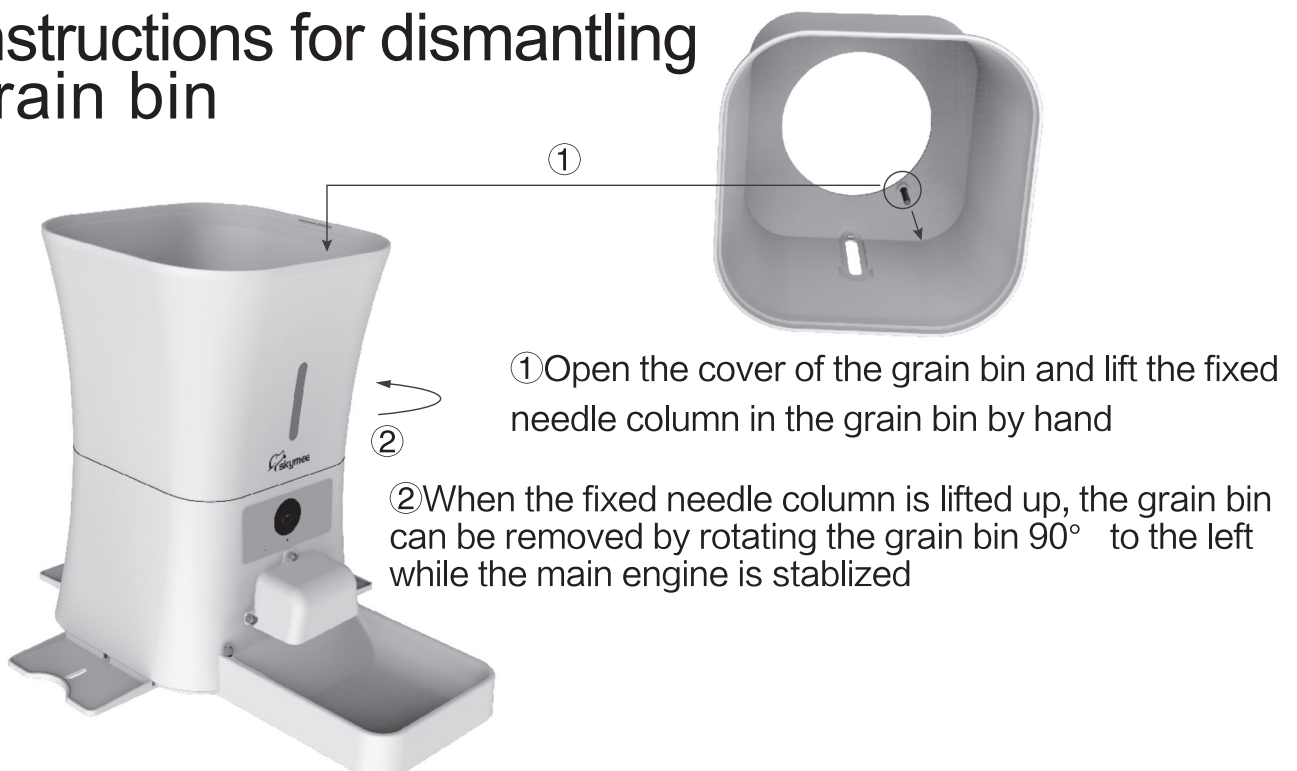
Role of the protective cover

- 1.Prevent the pet from biting the discharging door
- 2.Prevent the infrared detection of the equipment from being disturbed by infrared light in sunlight or strong light.

Assembly Instruction



Instructions for dismantling grain bin



Description of status indicator lights

Powered by external power supply

- Red light: Slowly flashing for no food or device fault
Quick flashing for no food
- Blue light: Slowly flashing for configurable state
Quickly flashing for networking
Normally on for successful connection
Blue light on for 15s: Powered on and starting

Powered by built-in battery

- Red light: Normally on for normal power supply by battery
Flashing for food clogging, device fault, battery low

Attentions

1. Minimum requirements for equipment use

1.1 Equipment end web requirement

In case of standard resolution, the uplink bandwidth speed is at least 512kbps.

In case of high resolution, the uplink bandwidth speed is at least 1Mbps.

1.2 app end web:

The uplink bandwidth speed is at least 512kbps for standard resolution and at least 1Mbps for high resolution.

2. Please do not allow anything other than pet food to fall into the material pail, otherwise the equipment will become abnormal for operation or even a pet safety problem may arise. The dog food diameter is $\leq 15\text{MM}$.

3. Do not allow pets to bite the electric wire, which may lead to death due to electric shock.

4. Please ensure that any child uses this equipment under the guide of an adult.

5. Do not touch the food outlet in food discharging.

Troubleshooting

1. If connection fails when hearing "Doo" in reading the 2D code for adding equipment, check if the Wi-Fi password is correct and connect again, or change to equipment hot point for equipment addition. (See if the equipment indicator lamp is Blue and blinks. If the Blue lamp is on constantly, press and hold the equipment Reset hole. On hearing "Doo" after 5 seconds, have the equipment resume to the addition state).

2. In case of failing to read the 2D code and hear "Doo" in adding equipment, check if the equipment indicator lamp is Blue and blinks. If the Blue lamp is on constantly, it indicates that there has been an equipment addition. You can press and hold the equipment Reset hole. On hearing "Doo" after 5 seconds, have the equipment resume to the addition state. Just connect again.

3. In case of any error in equipment addition, you may have used 5G Wi-Fi for binding. Wireless Wi-Fi supports 2.4GHz frequency band only. 5G Wi-Fi is not supported temporarily. Please adjust for 2.4G Wi-Fi.

4. The real-time pictures are not smooth. Confirm if the web uploading and downloading rates meet the equipment work requirements. If the web rate is too low, you may choose a smooth mode.

5. The equipment displays offline. Check if the web is normal.

6. That the equipment red lamp is on indicates that there is no food or the equipment is abnormal.

7. When the equipment does not work or the power is not supplied normally, check if the rated working voltage is 5V and the rated power 10W/2000mA.

Download and install app



App Store



Google play



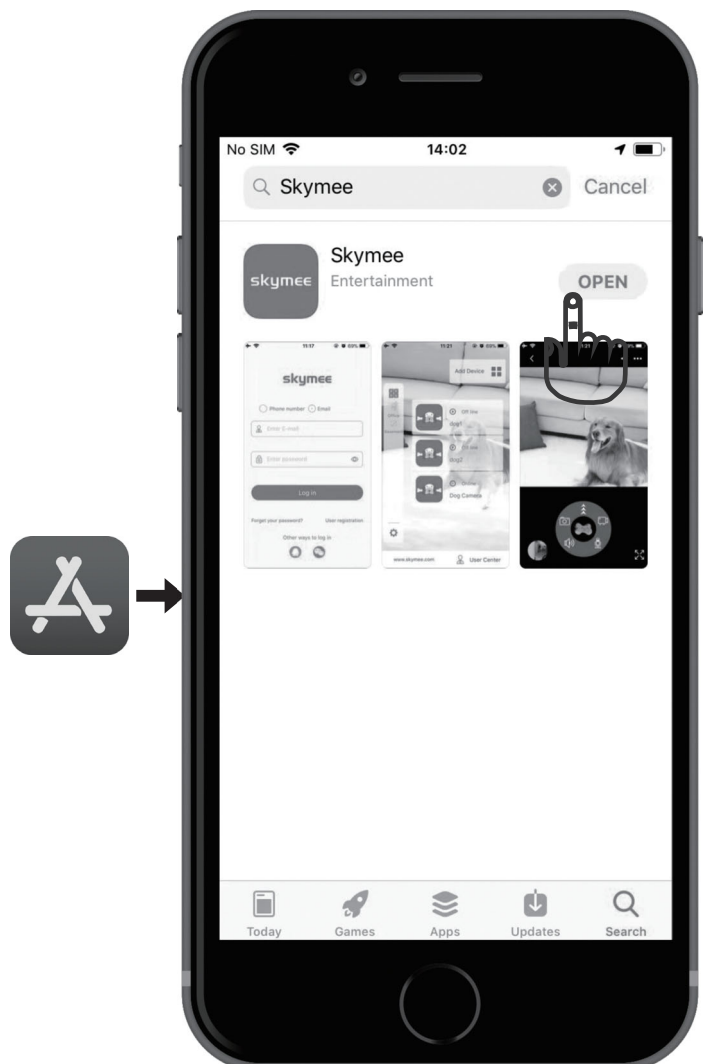
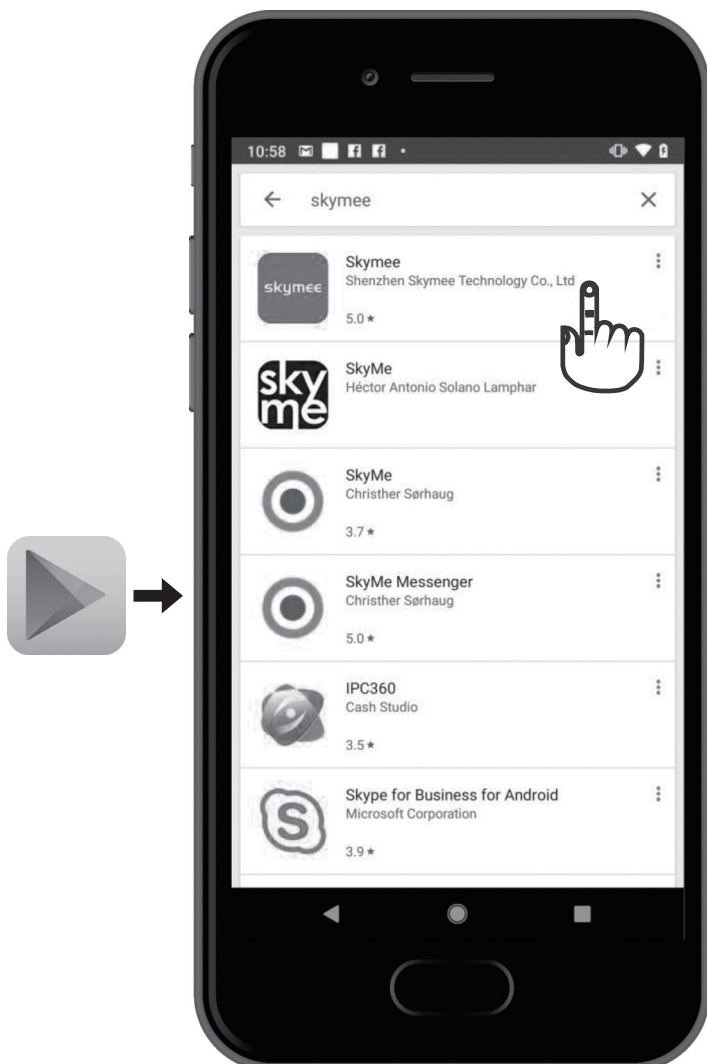
Android & ios

The mobile phone scans the QR code or logs on the website to download and install the app.



For Android users, enter Google play to search "skymee" and download.

For Iphone users, enter App store to search "skymee" and download.



FCC Statement

This equipment has been tested and found to comply with the limits for a Class B digital device, pursuant to part 15 of the FCC rules. These limits are designed to provide reasonable protection against harmful interference in a residential installation. This equipment generates, uses and can radiate radio frequency energy and, if not installed and used in accordance with the instructions, may cause harmful interference to radio communications. However, there is no guarantee that interference will not occur in a particular installation. If this equipment does cause harmful interference to radio or television reception, which can be determined by turning the equipment off and on, the user is encouraged to try to correct the interference by one or more of the following measures:

- Reorient or relocate the receiving antenna.
- Increase the separation between the equipment and receiver.
- Connect the equipment into an outlet on a circuit different from that to which the receiver is connected.
- Consult the dealer or an experienced radio/TV technician for help.

To assure continued compliance, any changes or modifications not expressly approved by the party.

Responsible for compliance could void the user's authority to operate this equipment. (Example- use only shielded interface cables when connecting to computer or peripheral devices).

This equipment complies with Part 15 of the FCC Rules. Operation is subject to the following two conditions:

- (1) This device may not cause harmful interference, and
- (2) This device must accept any interference received, including interference that may cause undesired operation.

FCC Radiation Exposure Statement:

The equipment complies with FCC Radiation exposure limits set forth for uncontrolled environment. This equipment should be installed and operated with minimum distance 20cm between the radiator and your body.

.