

BLUETOOTH BLE BEACON

Model:E-BBE9

Datasheet

V003

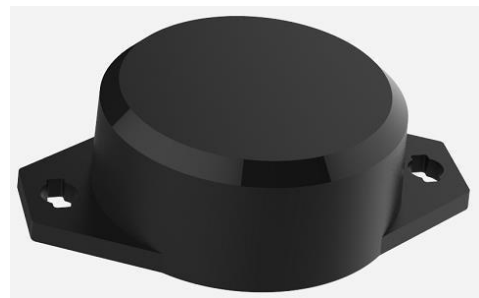
Part #	Description
E-BBE9	BLUETOOTH BLE BEACON with 3-axis accelerometer sensor, Bluetooth® 5.0, IP67 waterproof & dustproof, screw fixing, pre-flashed MiniBeacon Plus software supports broadcasting iBeacon & Eddystone simultaneously

The BLUETOOTH BLE BEACON E-BBE9 is a new generation beacon which loaded accelerometer and intelligence MiniBeacon Plus software on the Bluetooth® 5.0 hardware platform. E-BBE9 has a smart rotatable mechanical design for the housing that makes the coin battery replaceable and IP67 waterproof & dustproof grade combination perfectly.

It is attached to objects by screws mounting or double-sided adhesive for indoor location, activity monitoring, asset tracking etc. so as to realize the remote data management. It is able to configure the BLUETOOTH BLE BEACON E-BBE9 via configuration app BeaconSET+ to different parameters so that to meet different applications.

FEATURE

- IP67 waterproof & dustproof
- Replaceable coin battery 1000mAh
- Advertising iBeacon & Eddystone
- Max. storage 200 history records
- Bluetooth® 5.0 chipset nRF52 series
- The max. 100 meters advertising distance
- Internal ON/OFF push button
- Tough enclosure and screw fixing
- Accelerometer available



BLUETOOTH BLE BEACON E-BBE9

APPLICATION

- Indoor location
- Retail promotion
- Activity monitoring
- Inventory tracking

ACCESSORY

- 2 pcs screws / double-sided adhesive

CONFIGURATION TOOL

- BeaconSET+ (iOS & Android)

ACTIVATE E-BBE9

- Clockwisely open the rotatable housing, press “push button” and keep holding on 3 seconds; The blue LED lights on 5 seconds and then off, the BeaconPlus E-BBE9 has been activated on;
- Press “push button” and keep holding on 3 seconds; The blue LED blinks 5 times and then off, the BeaconPlus E-BBE9 has been turned off;

CERTIFICATION

- iBeacon MFi License (iBC-14-00582)
- Bluetooth® EPL Certification
- FCC Regulation (FCC Part 15.)
- CE Regulations (Included EN300328/301489/60950/62479)

ELECTRONIC PARAMETER

Item	Value	Remarks
Case Color	White	
Battery Model	1 x CR series battery	1000mAh
Transmission Current	5.3mA (peak current)	Tested at 0dBm transmission power
Transmission Range	100 meters	Maximum
Waterproof level	IP67	Tested at 1-meter water
Antenna	50ohm	On board / PCB Antenna
Size	49 x 66 x 17.5mm	49mm diameter, 66mm length, 17.5mm height

PARAMETER SETTING

Each E-BBE9 BLUETOOTH BLE BEACON has been pre-configured in the factory before the shipment. Here below is given the main parameters and default settings.

Type	Item	Default Settings
iBeacon	UUID (16 bytes)	4D41474E-5441-4027-BDC4-19D9D8CE069E
	Major (2 bytes)	0
	Minor (2 bytes)	0
Eddystone	Instance ID @UID	Random (6 bytes)
	Namespace ID @UID	Random (10 bytes)
	/	/
Base Parameters	Measured Power	-59 (0xC5)
	Radio Tx power	- 4 dBm)
	Adv. Interval	5 (500mS)
	Beacon ID	Random, it is the MAC address of beacon.
	Beacon Name	E-BBE9
	Connectable	Yes (it is configuration mode)

	Password	EmeritE9
Extra Function	Reset factory	Available
	Power off	Available
	Modify password	Available
	Remove password	Available
	Update firmware	Available

ACCELEROMETER SENSOR PARAMETER

Type	Item		Default Settings
Accelerometer Measurement	Range	+/-2g	Adjustable by firmware
	Measurement Accuracy	1mg/digit	
	Sampling Period	Once every 90ms	---

TECHNICAL DOCUMENT

Item	Version	File Name	Date
Datasheet	V2.0	E-BBE9 BLUETOOTH BLE BEACON Datasheet	30 th May, 2019
Instruction	V1.0	E-BBE9 BLUETOOTH BLE BEACON Configuration Instruction	5 th June, 2019
SDK	V2.0	Both iOS and Android	18 th May, 2018

PACKING INFORMATION

Details	Box	Carton
Quantity (E-BBE9)	20 pcs	200 pcs
Net Weight	0.45 Kg	4.5 Kg
Gross Weight	0.55 Kg	6.2 Kg
Size	31 x 11 x 8 cm	32 x 23 x 40 cm

FIRMWARE UPDATE

1. J-LINK Port;
2. Over the Air(OTA);

Please contact MINEW sales team to ask more related information if needed.

FCC Requirement

changes or modifications not expressly approved by the party responsible for compliance could void the user's authority to operate the equipment.

This device complies with Part 15 of the FCC Rules. Operation is subject to the following two conditions:

- (1) this device may not cause harmful interference, and
- (2) this device must accept any interference received, including interference that may cause undesired operation.

Note: This equipment has been tested and found to comply with the limits for a Class B digital device, pursuant to Part 15 of the FCC Rules. These limits are designed to provide reasonable protection against harmful interference in a residential installation. This equipment generates, uses, and can radiate radio frequency energy, and if not installed and used in accordance with the instructions, may cause harmful interference to radio communications. However, there is no guarantee that interference will not occur in a particular installation. If this equipment does cause harmful interference to radio or television reception, which can be determined by turning the equipment off and on, the user is encouraged to try to correct the interference by one or more of the following measures:

- Reorient or relocate the receiving antenna.
- Increase the separation between the equipment and receiver.
- Connect the equipment into an outlet on a circuit different from that to which the receiver is connected.
- Consult the dealer or an experienced radio/TV technician for help.

To maintain compliance with FCC's RF Exposure guidelines, This equipment should be installed and operated with minimum distance between 20cm the radiator your body: Use only the supplied antenna.

<END>