



## User's Guide

### E7 Active Noise Cancelling Headphones

#### Specification E7

Load impedance: 16Ω  
 S/N: ≥ 85dB  
 Frequency range: 20Hz-20KHz  
 Power supply: Lithium battery or Type-C USB cable  
 Audio source: iPhone, iPad, Smartphone, Notebook, MP3, MP4, etc  
 Function spec: Bluetooth, Microphone  
 Size: 166x92x181mm

#### Important information

1. Support Line in Noise Cancelling.
2. Couldn't Play Music under Line in When Power off.

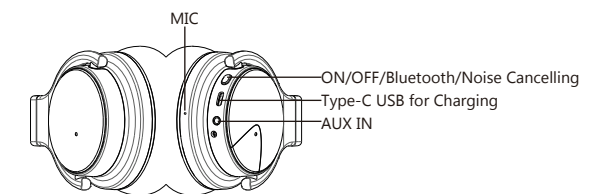
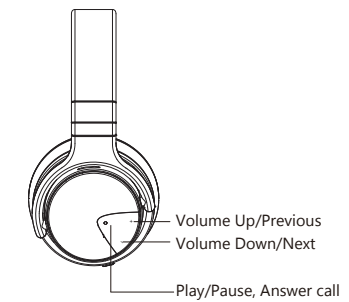
#### Battery Precautions

The device can be powered by a built-in rechargeable lithium battery. Please charge the battery for at least 8 hours before your first use of device.

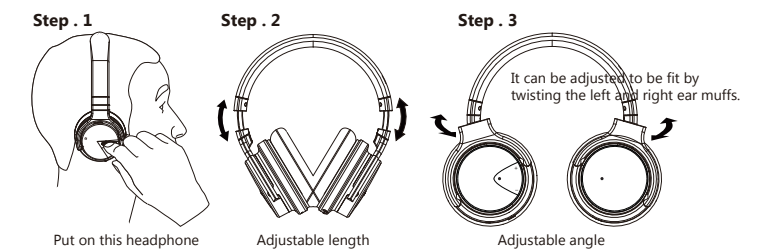
- Rechargeable batteries are only to be charged under adult supervision.
- Use only the supplied Type-C USB cable to recharge the battery. Improper charging may damage the battery and the device.
- Do not attempt to open the rechargeable battery or battery pack. There are no serviceable parts inside.
- Keep the battery out of reach of children. If swallowed, consult a physician immediately.
- Do not dispose batteries in a fire as they may explode. Batteries may also explode if damaged. Please dispose them according to local regulation.

EN 1

#### Getting Started

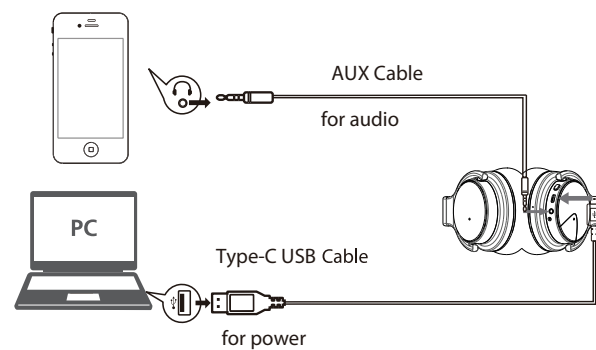


#### Installation Operation



EN 2

#### Cable Connection



#### Bluetooth Connection

Pairing headphone to your Smart device (Smart device should be within 10 meters of this headphone).

1. Activate pairing mode on headphone by turn the switch to "BT". The LED will flash in blue.
2. Turn on Bluetooth function of your device, (refer to the device owner's manual to locate Bluetooth function).
3. Select "Search" or "Discover" devices.
4. Select "E7".
5. If requested, type the password or PIN 0000
6. Press the Enter key.

After completing the steps above, a message on your Smart device will appear confirming that your device is now paired/ connected.  
 In case of unsuccessful pairing, turn off it and restart, then do as steps above.  
 If the Bluetooth on your smart device remains open, when you restart the headphone, the Bluetooth will be connected automatically.

EN 3

#### Function Guidance

Play music from your Smart device

Button	Operation	Function
+	Long Press	Previous song
+	Short Press	Volume up
-	Long Press	Next song
-	Short Press	Volume down
●	Short Press	Play/Pause, Answer/End a call
●	Long press	Ready for pairing
○	Long press	ON/OFF
○	Short Press	ANC ON/OFF

#### LED Display Status

	LED Display	Light indication	
Right Light	Blue	Flash	Power ON
		Stay Solid	Paired
	White	Active noise cancelling ON	
	Red	Charging in process	
	Red OFF	Fully charged	

EN 4

#### Product care

- Do not drop, crush, bend or apply excessive force to the device.
- Do not expose your device to moisture, extreme or prolonged heat, cold, humidity, or other adverse conditions. Avoid storing it in damp, humid or wet places, as it is not waterproof.
- Clean the unit with a soft cloth or damp chamois leather. Never use solvents.
- The Unit can only be opened by qualified personnel.
- This device contains magnets. Keep magnetic field sensitive products such as credit cards and video screen away from this device to avoid damage or malfunction.

#### FCC Statement

This equipment has been tested and found to comply with the limits for a Class B digital device, pursuant to part 15 of the FCC Rules. These limits are designed to provide reasonable protection against harmful interference in a residential installation. This equipment generates, uses and can radiate radio frequency energy and, if not installed and used in accordance with the instructions, may cause harmful interference to radio communications. However, there is no guarantee that interference will not occur in a particular installation. If this equipment does cause harmful interference to radio or television reception, which can be determined by turning the equipment off and on, the user is encouraged to try to correct the interference by one or more of the following measures:

- Reorient or relocate the receiving antenna.
  - Increase the separation between the equipment and receiver.
  - Connect the equipment into an outlet on a circuit different from that to which the receiver is connected.
  - Consult the dealer or an experienced radio/TV technician for help.
- Caution: Any changes or modifications to this device not explicitly approved by manufacturer could void your authority to operate this equipment.  
 This device complies with part 15 of the FCC Rules. Operation is subject to the following two conditions: (1) This device may not cause harmful interference, and (2) this device must accept any interference received, including interference that may cause undesired operation.

#### RF Exposure Information

The device has been evaluated to meet general RF exposure requirement. The device can be used in portable exposure condition without restriction.