

Wireless Motion Sensor LED Light

Thank you for buying our products. Please read this User Manual carefully for the sake of correct use and normal operation.

◆ Product applicability

This product can be widely used at all places and positions of a house, e.g.: the cupboard, food locker, storage cabinet of a kitchen, the wardrobe, bedside cabinet, closet of a bedroom, the corridor, stairs, aisle, lavatory, garage, garret, basement etc. In addition, more importantly: its installation is easy since no any other tool is needed. It can almost be installed at any place!

It has been provided with powerful light and human body induction functions for easy and intelligent operation.

It is featured by compact structure, light weight, broad transparent panel, bright appearance, aluminum alloy casing, good heat dissipation and comfortable feeling. For this product, more spaces can be saved in addition to easy installation.

◆ Product function description

1. With a built-in thermosensitive infrared sensor and a light sensor function module, the lamp can be turned on automatically when a moving person is detected and turned off 20s after the person moves out of the induction zone.
2. SMD2835 LED lamp beads are used for the sake of eco-friendly and energy-saving operation and longer service life.
3. A built-in large-capacity rechargeable lithium battery is used. Repeated charging is supported to prevent alkali battery contamination.
4. A USB charging port is provided for USB charging.
5. Three-way switch mode: OFF - Turning off; ON - Normally On; G or AUTO - Nightinduction mode.

◆ Product parts

1×LED induction lamp 1×metal piece 1×adhesive tape
1×USB charging cable 1×User Manual

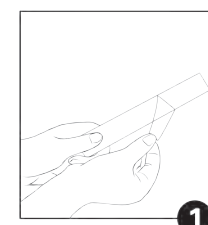
Note: The quantity of parts provided is dependent on the product model.

◆ Note:

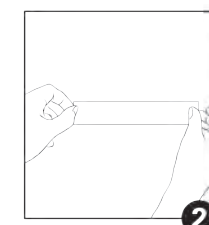
1. Please charge the product before use for the first time.
2. Human body induction range: Front - 2-3m; horizontal direction - 100; Side- 1-2m. The induction effect is dependent on the ambient temperature, human body form and moving speed.
3. After a certain period of time, please recharge the induction lamp if the luminance decreases or it's not working normally.
4. The charging port of this product or the USB port of your computer or the 500mA (or 1000mA) charger shall be connected with a USB cable.
5. If this product is idle for a long time, please charge it at least once a month for the sake of longer battery service life.
6. The operating temperature for this product ranges from -5° C to 30° C. The induction sensibility will be affected and the battery will be liable to damage if the temperature is out of this range.
7. Installation of this product near heat sources (such as air-conditioner outlet, heating outlet, humidifier, hearth and oven with changing temperature) and at any place with direct light or humidity shall be prevented.

◆ Product parameter

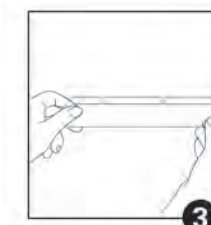
Model	DL002A	DL002B	DL002C
LED lamp bead	10 LED SMD2835	20 LED SMD2835	18 LED SMD2835
Color temp.	6000-6500K(standard white light) 2800-3000K(warm white light)	6000-6500K(standard white light) 2800-3000K(warm white light)	6000-6500K(standard white light) 2800-3000K(warm white light)
LED luminance	80 lm (+/-20%)	150 lm (+/-20%)	140 lm (+/-20%)
LED life	>60000H	>60000H	>60000H
Standby current	<0.2mA	<0.2mA	<0.2mA
Working current	<120mA	<200mA	<180mA
Service environment	Day or night	Day or night	Day or night
IP grade	Indoor	Indoor	Indoor
Induction mode	Photosensitive + thermosensitive infrared induction	Photosensitive + thermosensitive infrared induction	Photosensitive + thermosensitive infrared induction
Induction range	3m(+/-20%)	3m(+/-20%)	3m(+/-20%)
Induction angle	100 °(+/-20%)	100 °(+/-20%)	100 °(+/-20%)
Battery capacity	3.7v 1000 mA/h Lithium battery	3.7v 1000 mA/h Lithium battery	3.7v 1500 mA/h Lithium battery
Product size	L x W x H:190x34x12.5mm	L x W x H:190x34x12.5mm	L x W x H:305x34x12.5mm
Weight	Net weight =80g Gross weight =122g	Net weight =80g Gross weight =124g	Net weight =120g Gross weight =180g



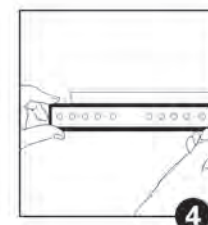
Remove the protective film on the iron piece



Stick the double-side tape onto the iron piece



Stick the adhesive iron piece to anywhere you want



Align the sensor light to the position of the iron piece



Installation rendering

FCC Statement

This device complies with part 15 of the FCC rules. Operation is subject to the following two conditions: (1) this device may not cause harmful interference, and (2) this device must accept any interference received, including interference that may cause undesired operation.

Changes or modifications not expressly approved by the party responsible for compliance could void the user's authority to operate the equipment.

NOTE: This equipment has been tested and found to comply with the limits for a Class B digital device, pursuant to part 15 of the FCC Rules. These limits are designed to provide reasonable protection against harmful interference in a residential installation. This equipment generates uses and can radiate radio frequency energy and, if not installed and used in accordance with the instructions, may cause harmful interference to radio communications. However, there is no guarantee that interference will not occur in a particular installation. If this equipment does cause harmful interference to radio or television reception, which can be determined by turning the equipment off and on, the user is encouraged to try to correct the interference by one or more of the following measures:

- Reorient or relocate the receiving antenna.
- Increase the separation between the equipment and receiver.
- Connect the equipment into an outlet on a circuit different from that to which the receiver is connected.
- Consult the dealer or an experienced radio/TV technician for help.