

# WIFI LED SMART STRIP INSTRUCTIONS



Email: [led@customersupport.cn](mailto:led@customersupport.cn)



# 1. After-sales service

▪ **Our Commitment: Provide you with 5 star After-Sales Service!**

▪ **Dear customer:**

1. There is a certain rate of defect on mass produced product even for famous corporations like Apple and Sumsung.
2. With various individual components(adaptor, remote, controller, light rolls...) light strips are more complicated than other products. A glitch on any parts will affect the whole item.Hence, besides quality, we also focus on post sales service that you can fully rely on.

**If any problem, please feel free to contact us and we will follow up quickly and do our best to help you for your satisfaction.**

Please email us at [\*\*led@customersupport.cn\*\*](mailto:led@customersupport.cn) with the **screenshot** of your Amazon Order Number page.

---

## Why Add Facebook?

To hear the latest update about various LED products (**RGB series, Bluetooth series, WiFi series, Bluetooth rainbow color series, 2-Pack/3-Pack garage light, 2-Pack Motion Garage Lights...**) and these newly released products are launched regularly for free testing. If interested, feel free to contact us!



facebook  
US After-sales service



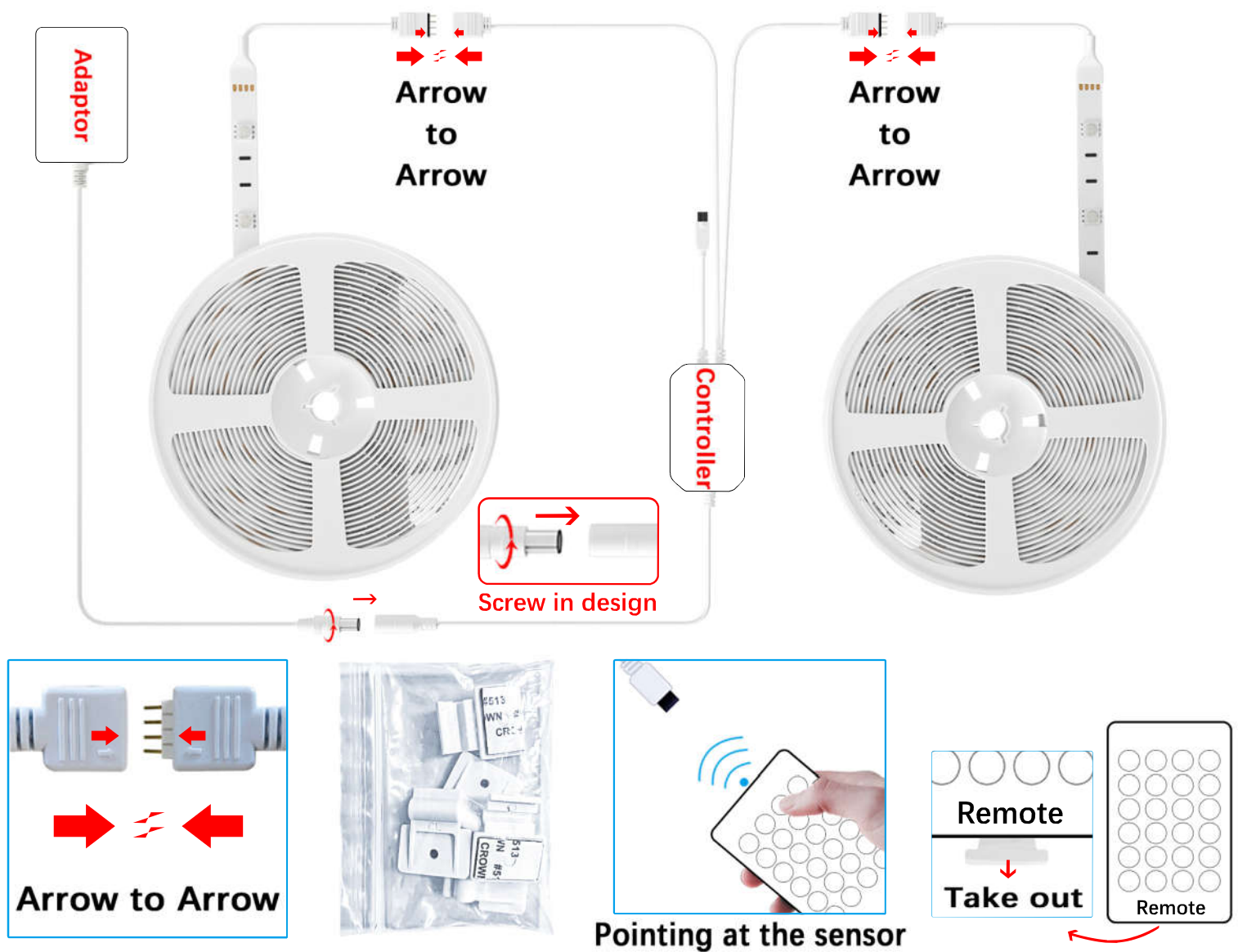
facebook  
CA After-sales service



facebook  
AU After-sales service



## 2. Installation



### Key points of Installation

①. Stick the LED strip on suitable surface.



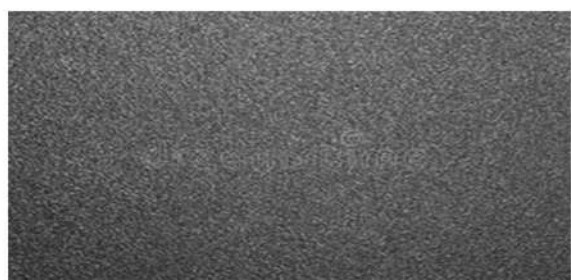
**Knitted/Wool fabrics**



**Dust wall**

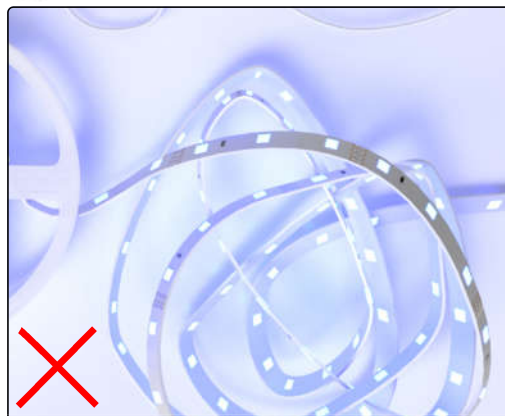


**Frosted glass**



**Rough plastic surface**

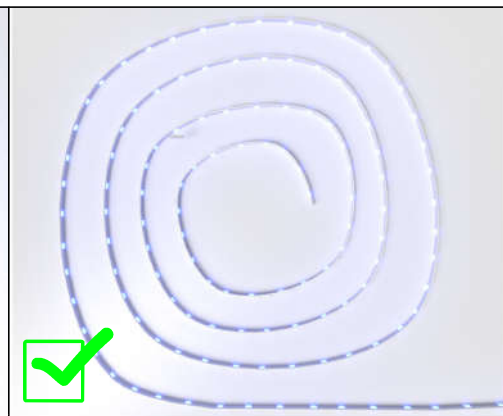
## ② .Test item



Entanglement can cause neighboring **resistors** to collide and cause a **short circuit**.



It can lead to **overheating** if you test it without unrolling for more than **2-3 mins**.



Please do in this way by scattering them out to avoid overheating.



It is not recommended to **extend the light strip by connecting two rolls of light strips directly without the controller in the middle** because this will shorten the life of the power adapter.

1. The brightness will decrease and colors mismatching might occur
2. The power adapter may be damaged for overload

Malfunctions are often caused by **incorrect installation methods** other than others factors or the quality of the product itself.

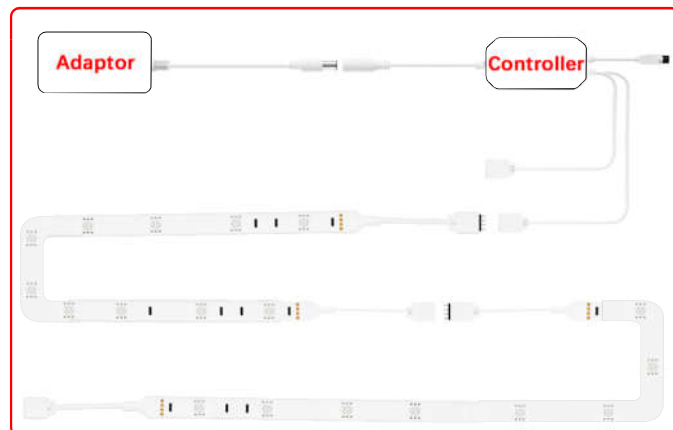
Risk of extending the light strips:

1. Reduced brightness, especially the distant parts from the power source.
2. Reduced service life of the adapter.
3. Inconsistent colors on LED sections.
4. Light bead failure.

Correct way



Wrong way

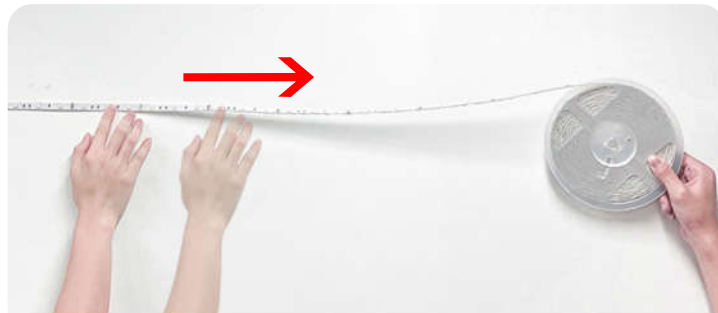


If extending is a required step for your installation, please bear these risks in min.

### ③. Uncover the backing adhesive



### ④. Tear and attach

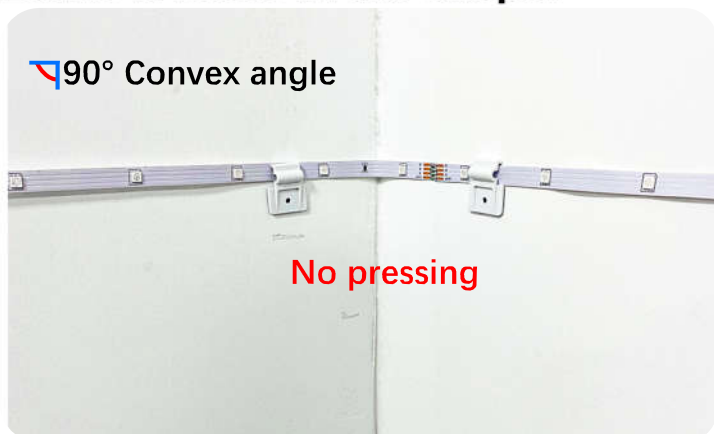


During installation, it is recommended that you use a helping hand holding and unfolding the light strand to avoid twisting of the light strip

### ⑤. Fixate the light end, controller and adaptor cord with the clips provided first.



### ⑥. No pressing on the turning. Leave it loose in arc shape.



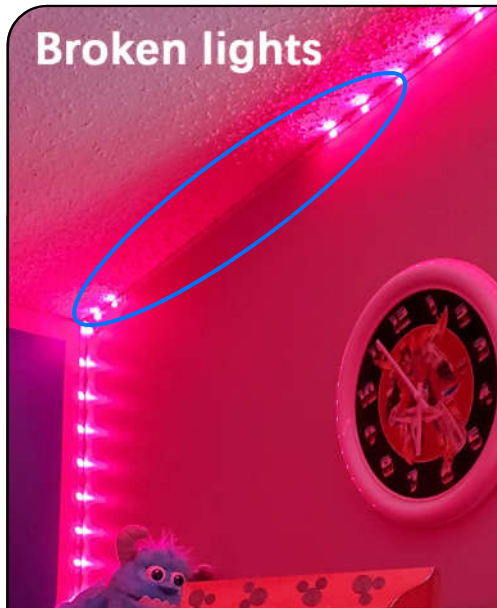
### ⑦. Stick the LED strip and press the panel with a little force.







If cases like below occur or you need corner connector and securing clip, please contact us.  
**Email:led@customersupport.cn**



**Securing clip**

### 3. Instructions for APP connection

①. Wi-Fi must be **2.4GHz**. If not, please contact local provider for adjustment



 **2.4GHz**

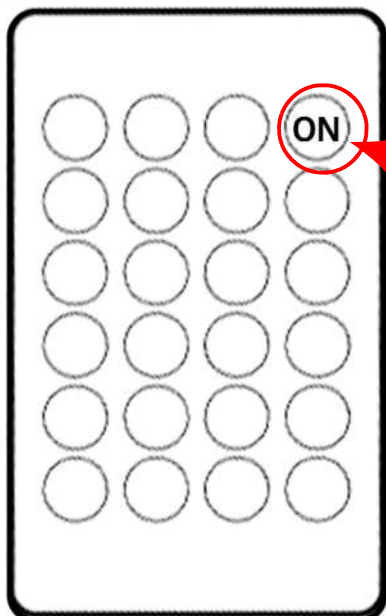
 **5GHz**

②. Download Cozylady App, set up your account and log in



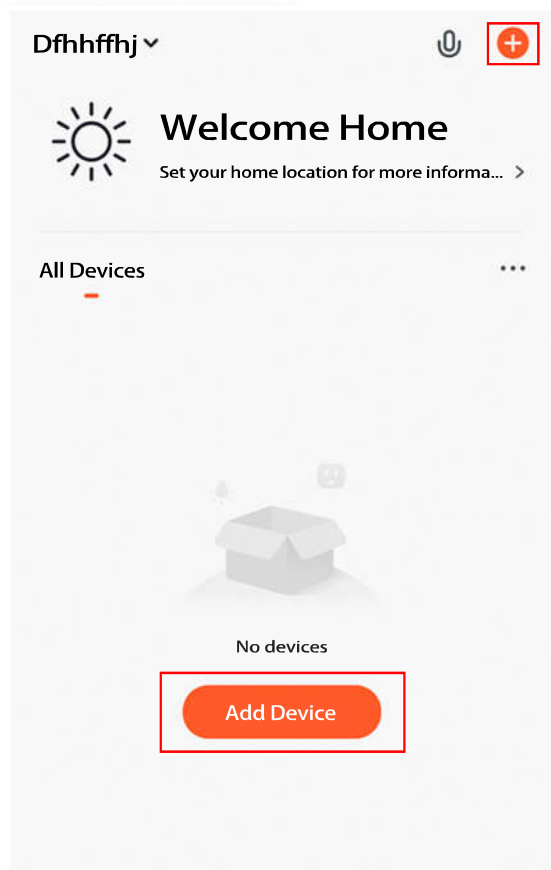
③. Power on your LED strip light set

④. Press the ON button of the remote and hold it for about **3-10 seconds** until the LED strip starts flickering in red

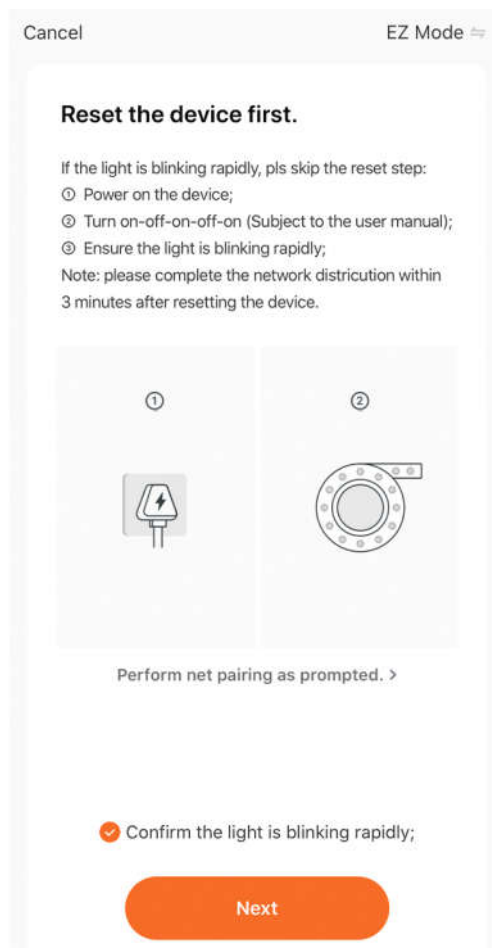
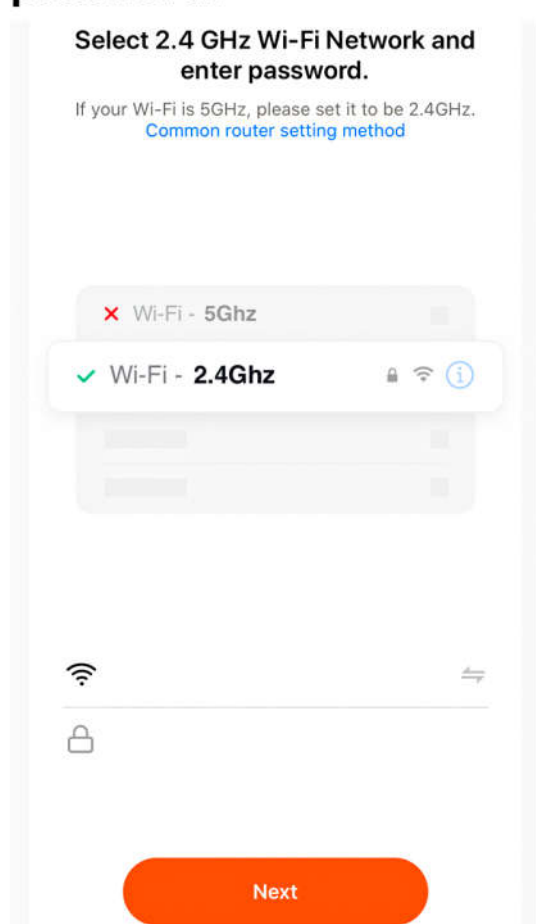


**Holding for about 3-10 seconds**

⑤. Click the **“+”** on the upper right or click **“Add Device”** - **“lighting”** - **“Strip Lights”**.

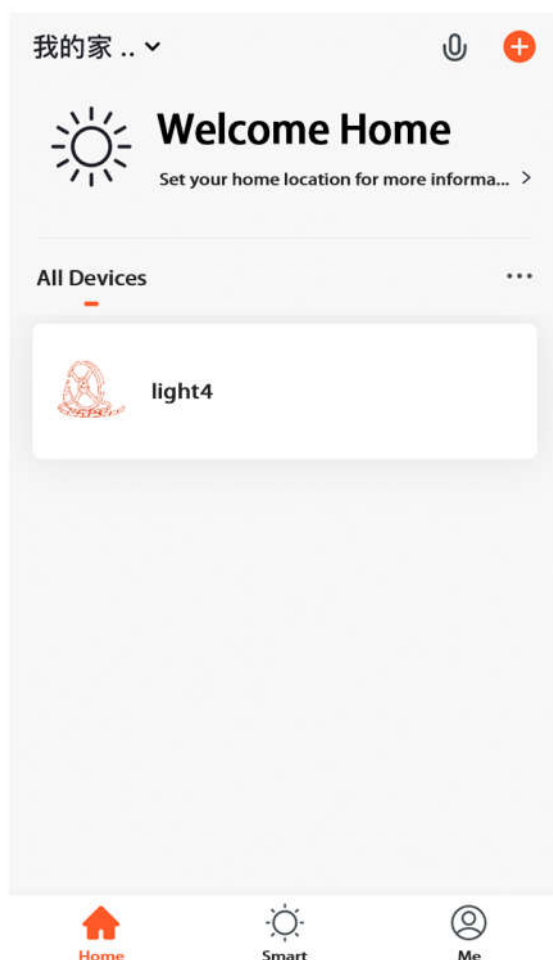
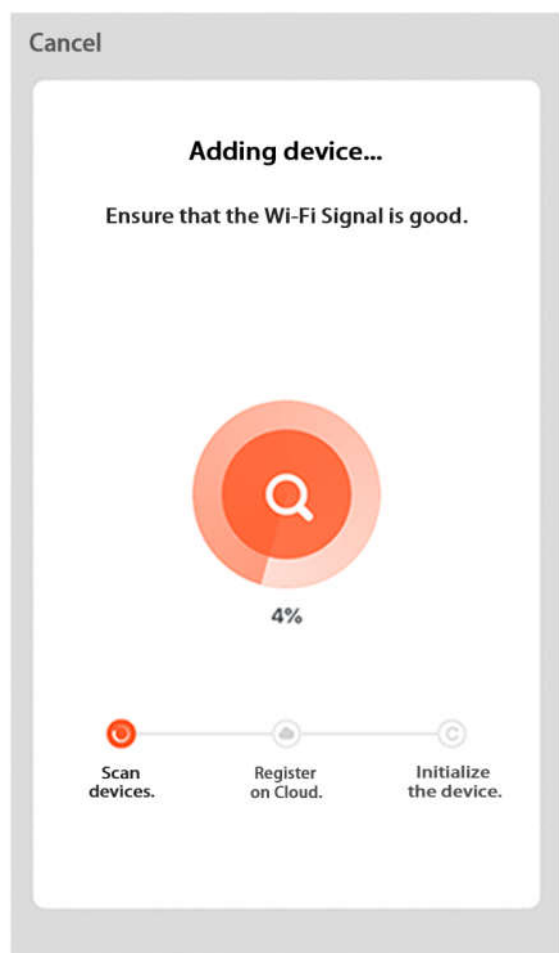


⑥. Click **“Next”** (and when the light is actually blinking fast) click **“is fast blinking”**, and then choose a 2.4G Home Wifi and enter with password.





⑦. Wait for a few seconds for successful connection with the home router and then you can name the controller as you want, such as (light4). Lastly, click **“Done”** to finish the setting and the light strip is now controllable by your phone.



### Attention

If there occurs case of connection failure as showed in the graph below, please confirm first whether the controller is connected to 5G network. If so, you would need to restart the process and switch to 2.4G network.

## Connection timed out

### Check demerit points and retry

- ① Check if the device has been reset and the indicator is blinking quickly.
- ② Check if it is 2.4 GHz Wi-Fi.
- ③ Verify the Wi-Fi password.



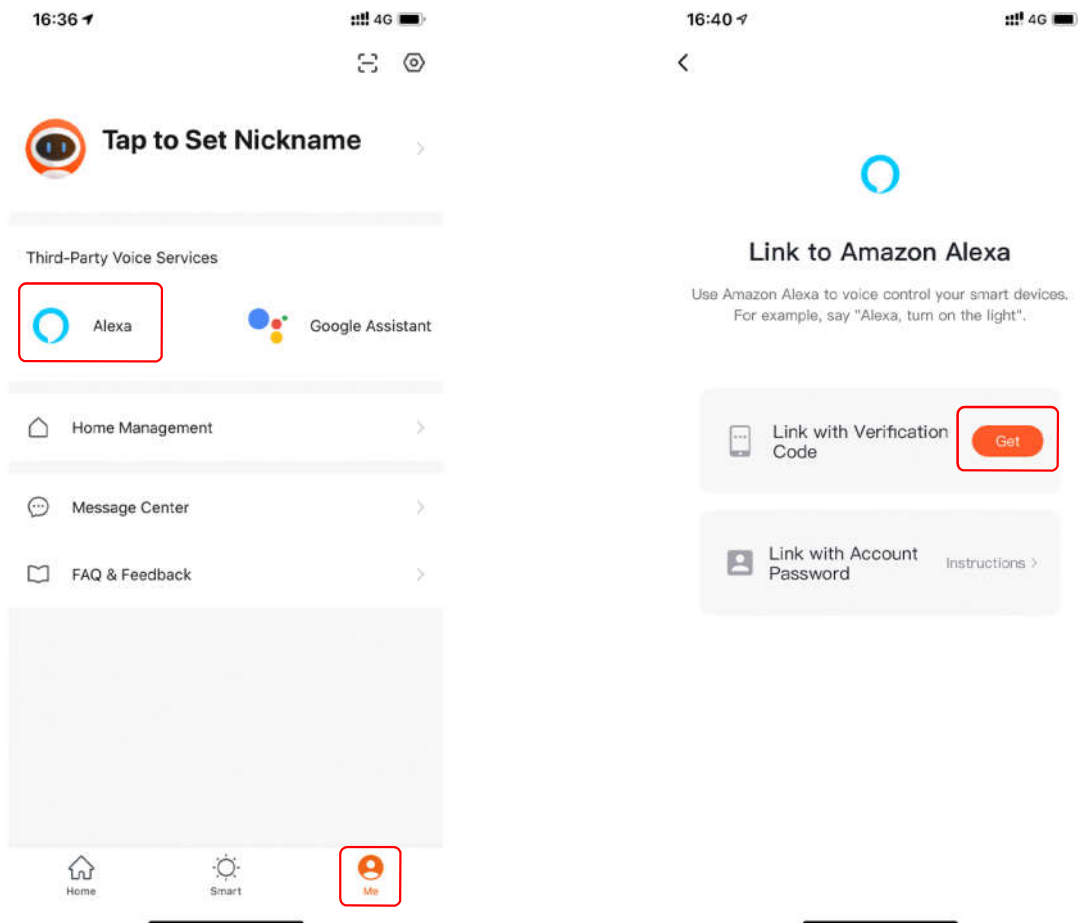
Retry

Switch Pairing Mode

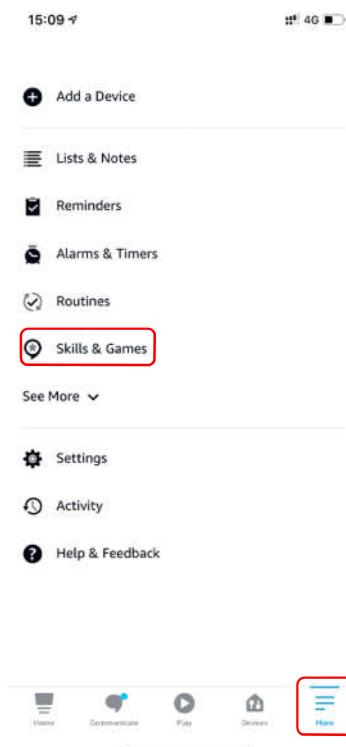
[More device-pairing FAQs](#)

# 4. How to connect Alexa

①. Open Cozylady App---Find **"Me"** on the bottom right corner and click---Find Alexa and click it---Click **"Get"** next to **"Link with Verification Code"** --Copy the code

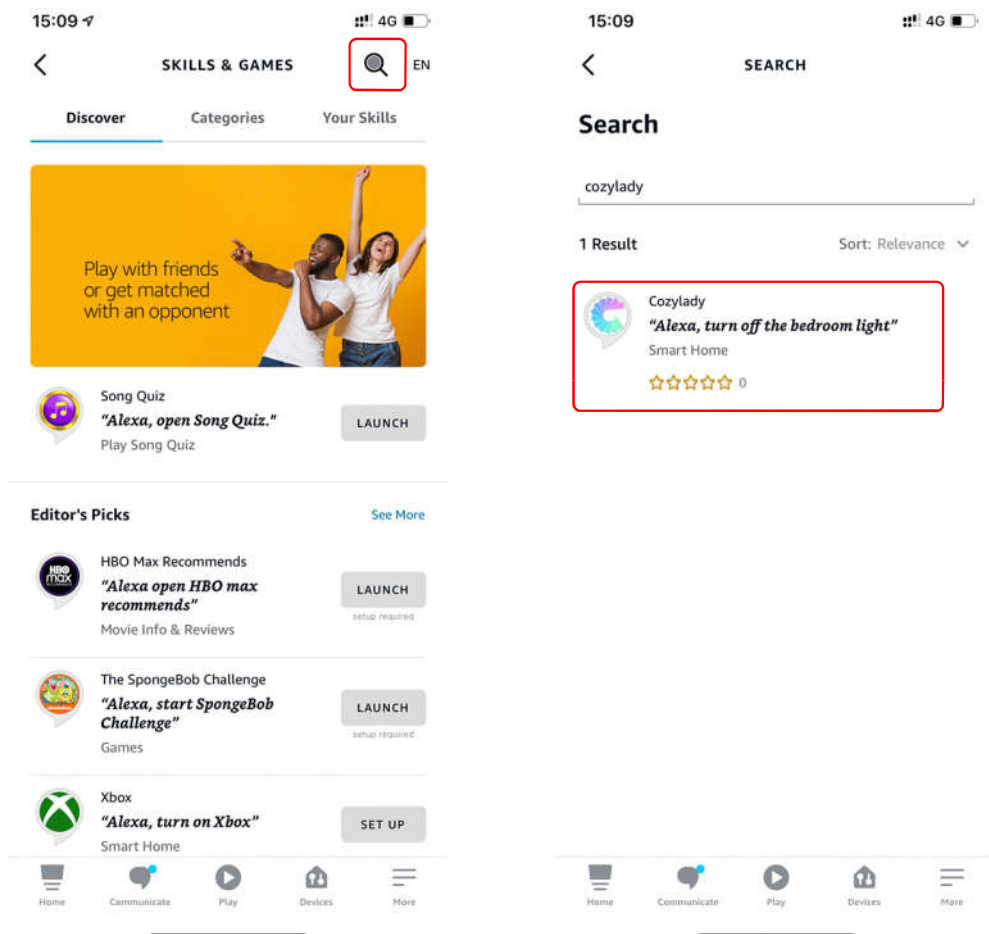


②. Open Alexa App--Go to **More** page on the bottom right--Find **Skills & Games** and click it

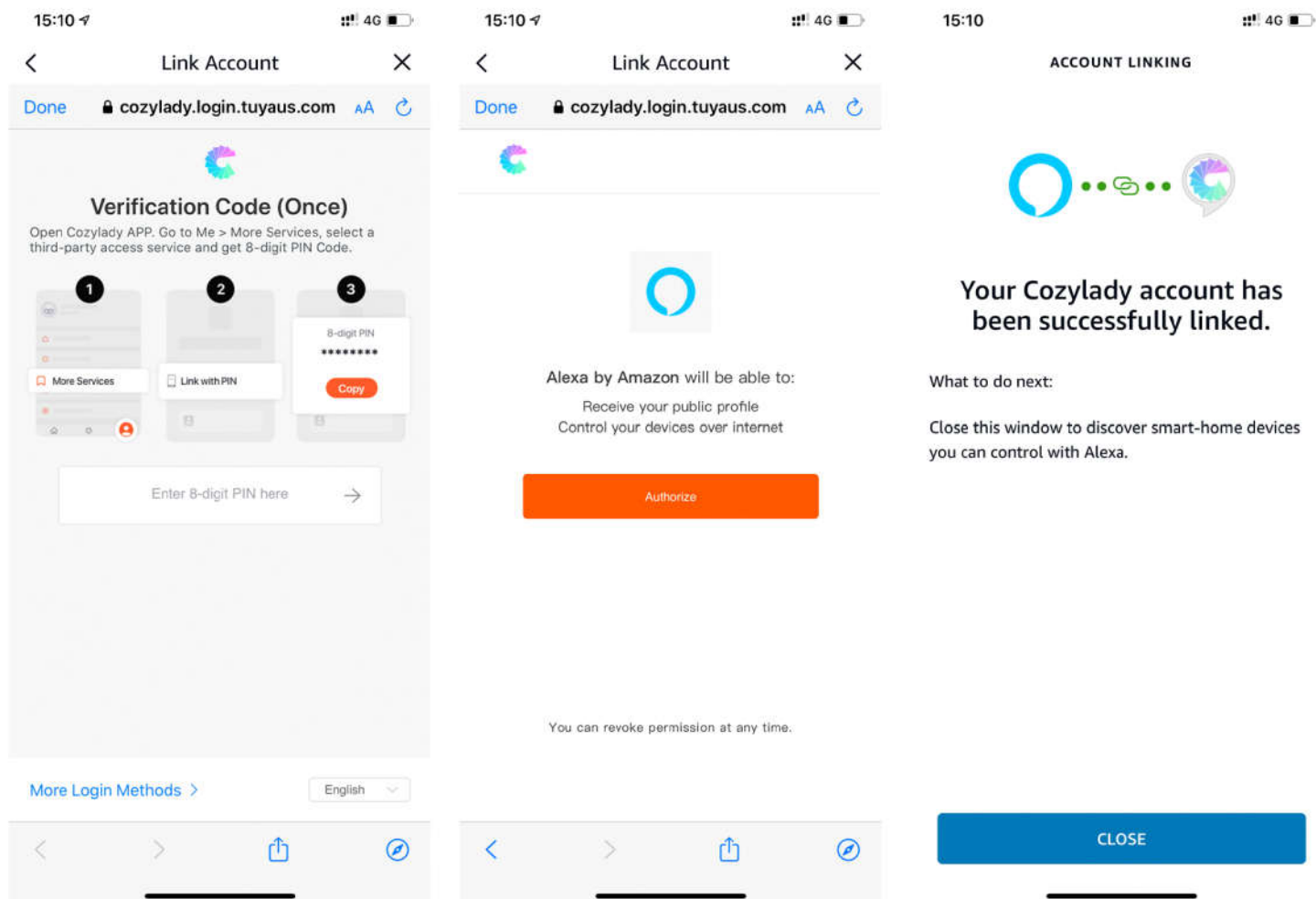




### ③. Search **Cozylady** and click the result



### ④. Click **"Enable Skill"** and put in the **Code** - - Done



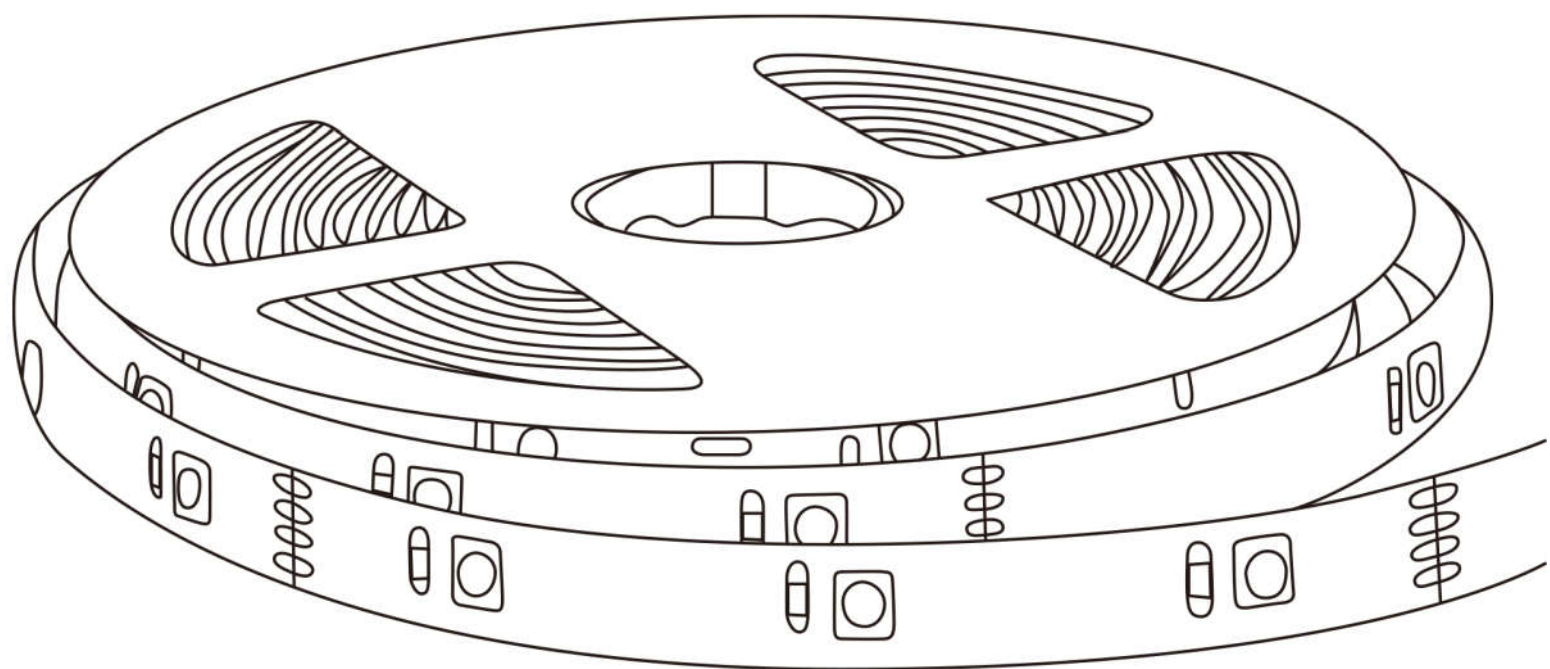
## 5. Safety Information

- ①. Keep away from open flame.
- ②. Avoid overheating the light when power is on.  
Please unroll the light before using.
- ③. Avoid rough surface. Make sure the surface is clean and dry before installation.
- ④. Avoid uncovering too much backing during installation and stick it to the installation surface slowly.
- ⑤. Avoid pressing the lamp bead on the lamp strip with too much force.
- ⑥. Backing adhesive does not have good adhesion to all materials, so please use the securing clips we provide.
- ⑦. Avoid direct contact between light beads, which might cause failure of light beads caused by short-circuit.
- ⑧. Non-waterproof version is for indoor use only.  
Please avoid direct contact to liquid or vapor.
- ⑨. Please don't cut the light strips randomly, it is not recommended to cut it by yourself, so as to avoid operating errors and lead to product failure.
- ⑩. Please avoid using the light set in stormy weather.

## Exemption Clause

Please note our company is not liable for any faulty or damage caused by use of any unoriginal accessories from another company brand, or components(including power adapter, receiver/controller, connectors and any other parts not included in the product's original package)

Support team: [led@customersupport.cn](mailto:led@customersupport.cn)



### EVATOST CONSULTING LTD

Suite 11, First Floor, Moy Road Business  
Centre, Taffs Well, Cardiff, Wales, CF15 7QR  
[contact@evatmaster.com](mailto:contact@evatmaster.com)



### eVatmaster Consulting GmbH

Bettinastr. 30  
60325 Frankfurt am Main, Germany  
[contact@evatmaster.com](mailto:contact@evatmaster.com)



**Made in China**



FCC Warning:

This equipment has been tested and found to comply with the limits for a Class B digital device, pursuant

to part 15 of the FCC Rules. These limits are designed to provide reasonable protection against harmful interference in a residential installation. This equipment generates, uses and can radiate radio frequency energy and, if not installed and used in accordance with the instructions, may cause harmful interference to radio communications. However, there is no guarantee that interference will not occur in a particular installation. If this equipment does cause harmful interference to radio or television reception, which can be determined by turning the equipment off and on, the user is encouraged to try to correct the interference by one or more of the following measures:

- Reorient or relocate the receiving antenna.
- Increase the separation between the equipment and receiver.
- Connect the equipment into an outlet on a circuit different from that to which the receiver is connected.
- Consult the dealer or an experienced radio/TV technician for help.

Caution: Any changes or modifications to this device not explicitly approved by manufacturer could void your authority to operate this equipment.

This device complies with part 15 of the FCC Rules. Operation is subject to the following two conditions:

(1) This device may not cause harmful interference, and (2) this device must accept any interference received, including interference that may cause undesired operation.

This equipment complies with FCC radiation exposure limits set forth for an uncontrolled environment. This equipment should be installed and operated with minimum distance 20cm between the radiator and your body.