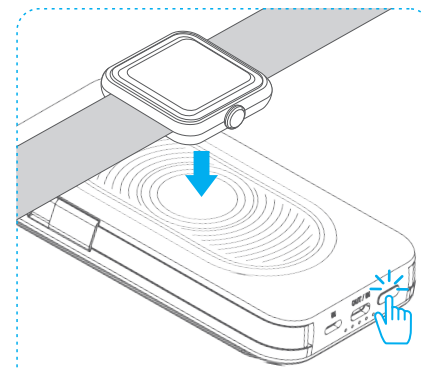


PN-W35S 尺寸:70 \* 105mm 105克铜版纸 折页 彩色双面印刷 风琴折

⚠ Only supports genuine Apple Watches

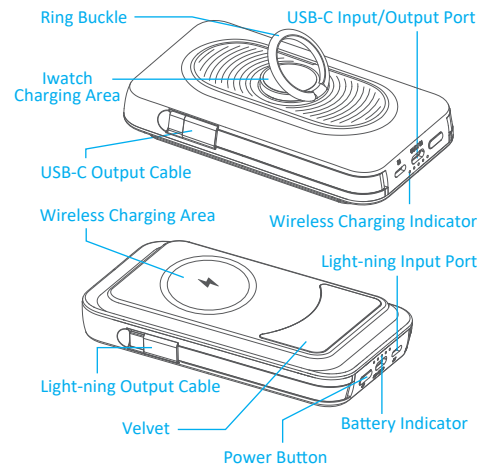


Please press the power button to start charging

✉ Support@blavor.com

Thank you for choosing our product. In order to provide a better user experience, we have provided detailed information about the product and instructions for use. Please read the instructions carefully before using this product to use it correctly.

1. Product Details



2. Product Parameters

Model	PN-W35S
Battery Capacity	10000mAh/3.85V/38.5Wh
Lightning Input	DC5V/2A
USB-C Input Port	DC5V/3A 9V/2A 12V/1.5A
USB-C Output Port	DC5V/3A 9V/2.22A 12V/1.67A
USB-C Input Cable	DC5V/3A 9V/2A 12V/1.5A
USB-C Output Cable	DC5V/3A 9V/2.22A 12V/1.67A
Lightning Output Cable	DC5V/2.4A
Wireless Output	2.5W(Watch) 5W 7.5W 10W 15W

3. Product Features

1. Exclusive design, fashionable and beautiful.
2. Original A-class polymer battery provides safety and stability.
3. Wireless output, compatible with all Qi-enabled mobile phones.
4. Using the original magnetic module, compatible with all models of Apple Watch.
5. Strong magnetic portable design, perfectly absorb mobile phones (iPhone 12 series and later) and is not easy to drop.
6. Built-in two cables for charging at any time, compatible with various digital products.
7. Ring buckle bracket design, suitable for various application scenarios.

4. Package Includes

- 1 \* Magnetic Wireless Power Bank
- 1 \* USB-C Charging Cable
- 1 \* Ring Buckle
- 1 \* User Manual

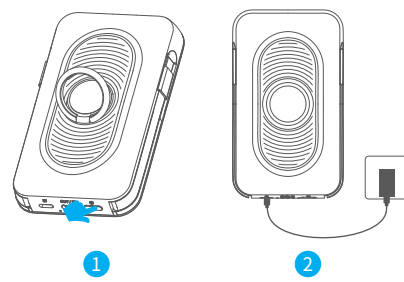
5. Instructions:

1) Turn on/off

Press the power button to turn on the power bank, and the LED battery indicator lights up, if there is no charging device connected, the power bank will automatically shut down after 30 seconds.

2) Charging the power bank

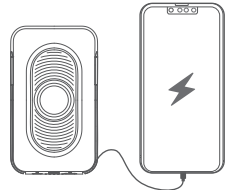
Plug the USB-C cable or the Light-ning cable into the power bank, and the other end into the port of the charger. The LED battery indicator will flash when charging, and the LED battery indicator will stay on when fully charged.



3) Charge your devices

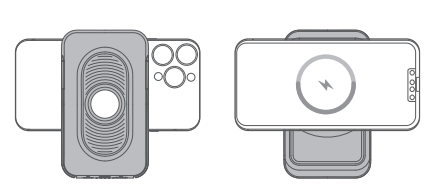
\*Cable charging

Plug into your device, then press the power button to turn on the power bank, and the LED battery indicator lights up.



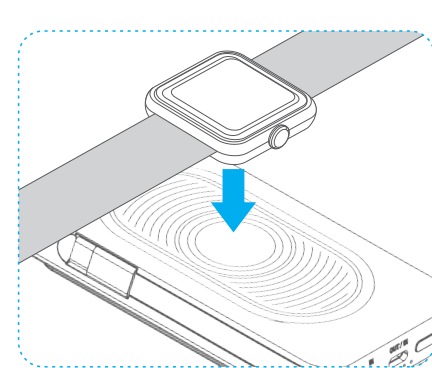
\*Wireless charging

Attach your phone to the wireless charging area of the power bank, then press the power button to charge your phone. The magnetic function is only compatible with iPhone 12 series and later.



4) Watch wireless charging

Press the power button, the indicator light is on. Put the watch in the wireless charging area and the watch will be absorbed and charged automatically.



6. Product Maintenance

To ensure the maximum efficiency of this product, please note the following:

1. Keep away from wet corrosive substances.
2. Do not use chemicals to clean this product.
3. When the product is not used for a long time, please charge it every six months.

Tips

1. The magnetic wireless charging is not compatible with non-magnetic phone case.
2. Magnetic function is only compatible with iPhone 12 series and later.
3. When the portable charger is charging or discharging, some heat may be generated due to the energy loss during the transmission process, which is a normal phenomenon.
4. When the phone is connected to wireless charging and wired charging at the same time, the phone will automatically switch to wired charging, and wireless charging will stop.
5. The suggestion is to plug in the charging cable while using magnetic attraction, as it can perfectly solve the problems of overheating and low charging conversion rate.

7. Warning

1. This power bank is suitable for DC 5V/3A charging devices. Use of a device beyond this specification may cause damage to this product.
2. Please do not disassemble or modify the power bank.
3. Keep away from fire and keep dry to prevent failures.
4. Please do not use the power bank at high temperatures ( $\geq 45^{\circ}\text{C}$ ).
5. Please connect a device that conforms to the output specifications of this product.
6. If you see any bulging, swelling, leakage, or other abnormality from the power bank, stop using it immediately.

8. Warranty & After-Sales Service

- 1) Every BLAVOR product is provided with 12 months of warranty and lifetime technical support.
- 2) If you have any problems with our products or services, please contact our dedicated customer service at Support@blavor.com. We usually get back to you within 24 hours during business days.



Please contact our after-sales Service department at Support@blavor.com

BLAVOR  
Magnetic Wireless Power Bank

## **FCC Statement**

This equipment has been tested and found to comply with the limits for a Class B digital device, pursuant to part 15 of the FCC Rules.

These limits are designed to provide reasonable protection against harmful interference in a residential installation. This equipment generates, uses and can radiate radio frequency energy and, if not installed and used in accordance with the instructions, may cause harmful interference to radio communications. However, there is no guarantee that interference will not occur in a particular installation. If this equipment does cause harmful interference to radio or television reception, which can be determined by turning the equipment off and on, the user is encouraged to try to correct the interference by one or more of the following measures:

- Reorient or relocate the receiving antenna.
- Increase the separation between the equipment and receiver.
- Connect the equipment into an outlet on a circuit different from that to which the receiver is connected.
- Consult the dealer or an experienced radio/TV technician for help.

This device complies with part 15 of the FCC Rules. Operation is subject to the following two conditions:

- (1) This device may not cause harmful interference, and
- (2) this device must accept any interference received, including interference that may cause undesired operation.

Any changes or modifications not expressly approved by the party responsible for compliance could void the user's authority to operate the equipment.

This equipment complies with FCC radiation exposure limits set forth for an uncontrolled environment. The device has been evaluated to meet general RF exposure requirement. The device can be used in portable exposure condition without restriction.