



Note

1. The camera only supports 2.4 GHz router Wi-Fi network.
2. Using this camera for illegal purposes is against the law.
3. Strictly adhere to the law. The manufacturer/vendor/trader will not be held responsible for your action.
4. Do not use this device near an open flame or extreme heat sources.
5. Temperature range deviation can lead to damage on the device.
6. This is not a waterproof device.
7. Keep this device away from damp environments and rain. Do not pour water on its surface.

Before Use

1. Please download TuyaSmart app or SmartLife app.
2. Use the USB cable (included) to power on the camera, then use the reset pin to press and hold the RESET key for 10 seconds to restore the factory settings, and then connect to use. **Note:** If restart is successful, the red light is always on, then 30 second later blue light will be flashing slowly.

Indicator Light

1. The **red** light is the power indicator, and the **blue** light is Wi-Fi indicator.
2. The corresponding mode is as follows:
 - (1) Hotspot mode (P2P): **red** light is always on, **blue** light flashes slowly (Note: P2P mode is for first setup only)
 - (2) Successfully connected to your home Wi-Fi (remote mode): **blue** light and **red** light are off together.

1. Install micro SD card

(Note: this is not required if you only need remote live view)

1. Please make sure the camera is within the Wi-Fi range. If the camera is outside of the range, it will not be able to work with SD card
2. Before install, locate on the back panel to insert your micro SD card (up to 128GB)
3. For privacy protection, the recordings on the SD card will be encrypted. You can then watch the footage via Tuyasmart app or Smart life app only, not via a computer.
4. If the camera malfunctions for any reason, please use USB cable to charge the camera and using the pin to press the reset hole for 5-10 seconds

2. Setup Wi-Fi

Step 1: Download & install app TuyaSmart

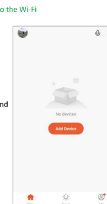
Option 1: Scan the QR code below to download and install TuyaSmart from Apple Store for IOS, and search on Google Play for Android.



Option 2: Go to Apple Store or Google Play and search for **TuyaSmart** app or **Smartlife** app. This camera can work with either one.

Step 2: Connect the camera to the Wi-Fi

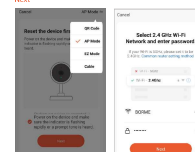
1. Open the Wi-Fi setting on your phone to find camera Wi-Fi named "SmartLife-xxxx" or "SL-xxxx".
2. After connected, go back and open the app, it will show "Add Device".
3. Press "Add Device" or the icon on the top "+" to connect the device.



4. Select "Security & Video Surveillance" section, choose and press "Smart Camera (Wi-Fi)".



6. Select 2.4GHz Wi-Fi Network and enter password. Then press

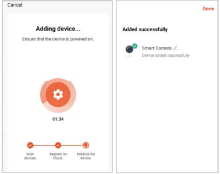
24/7 support@expert.us 2021 | EXPERT

7. Connect your mobile phone to the device's hotspot.

8. Open Wi-Fi setting to find camera Wi-Fi start from "SmartLife-xxxx" or "SL-xxxx", then back and open the App. Then click "Go to Connect"



9. After connected successfully, click "Done"



3. Motion Detection Alarm Setting



4. SD Card Setting

Note: Please format SD card before start setting



Specification

Video Format	H.264
Resolution	1920 x 1080 p
Frame Rate	30fps
Video Proportion	16:9
USB Speed	2.0
Storage Support	Up to 128 GB SD card
Support System	iOS, Android

FAQ

- (Q1) Remote monitoring is not played smooth?
- (R) Please select the appropriate resolution according to the network environment.
- (Q2) SD card is not saved?
- (R) The SD card must be formatted for the first time using.
- (Q3) Can't connect to Wi-Fi?
- (R) Please select 2.4Ghz Wi-Fi. Check if the Wi-Fi password is correct or reset the camera firstly.
- (Q4) The APP is not smooth when watching micro SD card video remotely.
- (R) Due to the difference in the decoding capabilities of mobile phones, please adjust the video resolution to suit your phone.

- (Q5) forget your password?
- (R) Press the reset button for 5 seconds to restore the factory settings.

Note: If the camera cannot be connected to the router Wi-Fi or camera offline, please reset it, then connect the camera step by step.

This device complies with part 15 of the FCC Rules. Operation is subject to the following two conditions: (1) This device may not cause harmful interference to radio or television reception, which can be determined by turning the equipment off and on, the user is encouraged to try to correct the interference by one or more of the following measures:

-Reorient or relocate the receiving antenna.
-Increase the separation between the equipment and receiver.
-Connect the equipment into an outlet on a circuit different from that to which the receiver is connected.

Note: This equipment has been tested and found to comply with the limits for a Class B digital device, pursuant to part 15 of the FCC Rules. These limits are designed to provide reasonable protection against harmful interference in a residential installation. This equipment generates uses and can radiate radio frequency energy and, if not installed and used in accordance with the instructions, may cause harmful interference to radio communications. However, there is no guarantee that interference will not occur in a particular installation. If this equipment does cause harmful interference to radio or television reception, which can be determined by turning the equipment off and on, the user is encouraged to try to correct the interference by one or more of the following measures:
-Reorient or relocate the receiving antenna.
-Increase the separation between the equipment and receiver.
-Connect the equipment into an outlet on a circuit different from that to which the receiver is connected.

Consult the dealer or an experienced radio/TV technician for help.

This equipment complies with FCC radiation exposure limits set forth for an uncontrolled environment. This equipment should be installed and operated with minimum distance 20cm between the radiator & your body.