

# USER MANUAL

## Catalogue

### I. Introduction

1. <a href="#">Technical Parameter</a> .....	1
2. <a href="#">Private Lock</a> .....	2
3. <a href="#">Backup Key</a> .....	3
4. Initialization.....	3

### II. [Installation](#) Guide

1. Change Handle Direction.....	4
2. Overview.....	5
3. Installation Diagram.....	6

### III. Operation Programing

1. Pairing Lock to Phone App	
1.1 Download the App " TTLock".....	9
1.2 Register and Login the Account.....	9
1.3 Match the Lock to the Application.....	9
2. TT LOCK App Operating	
2.1 Account Information Change.....	10
2.2 Lock/Unlock.....	11
2.3 Send ekey.....	11
2.4 Generate Passcode.....	12
2.5 e keys.....	12
2.6 Passcode.....	13
2.7 IC Cards.....	13
2.8 Fingerprints.....	14
2.9 Authorize Admin.....	14
2.10 Records.....	15
2.11 Settings.....	15
2.12 Remote Control.....	16
3. <a href="#">Add user by the lock</a> .....	16
4. <a href="#">Application FAQ</a> .....	18

---

# I. Introduction

## 1. Technical Parameter

Battery Type	4pcs 1.5V AA dry batteries (No include) <b><u>Rechargeable batteries are not recommended, because most rechargeable battery's voltage is 1.2V.</u></b>
Working Voltage	4.5~6v
Unlock Ways	Bluetooth, Fingerprint, Passcode, Access Card, Key, Alexa (Need to match the gateway <b>sold separately</b> ).
Scanner Type	LED 3D Live fingerprint sensor
FRR, FAR	$\leq 1\%$ , $\leq 0.001\%$
Work Environment	Temperature: $-20\sim 60^{\circ}\text{C}$ Humidity: $0\sim 95\%$
Passcode Capacity	150
Fingerprint Capacity	120
Card Capacity	200
Center Distance	60mm or 70mm (2-3/4" or 2-3/8")
Door Thickness	35~55mm (1-8/3"~2-1/8")
Passcode Length	6~12digits
Unlock response time	0.3s

## 2. Private Lock

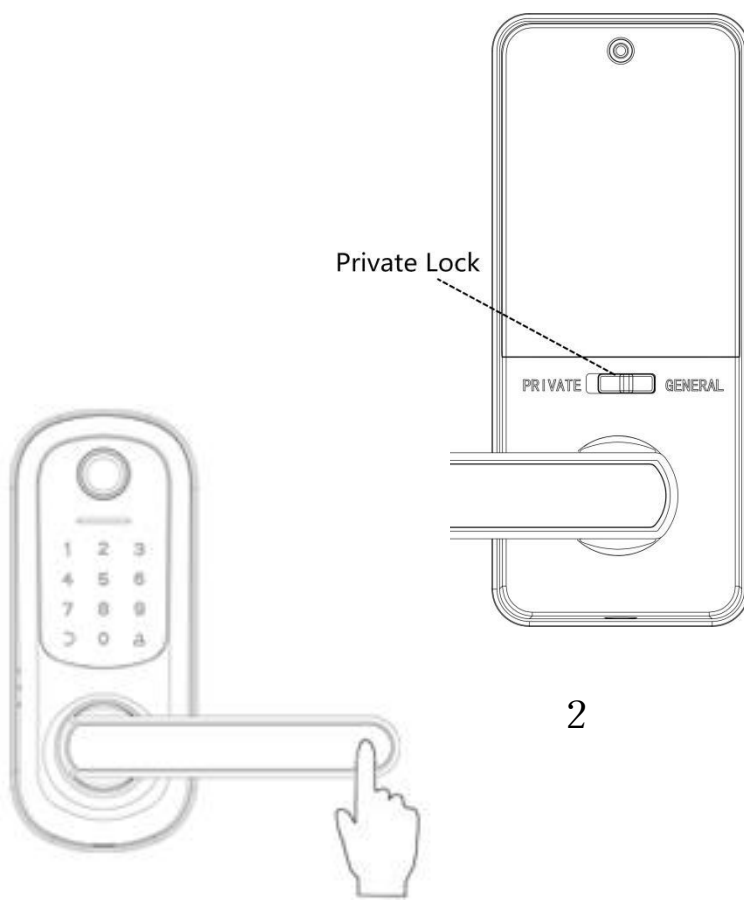


### **Private mode**

Only the administrator passcode, administrator APP account and backup key can unlock the lock.

### **General mode**

Every added users can unlock it by Bluetooth, passcode, fingerprint, card and backup key.

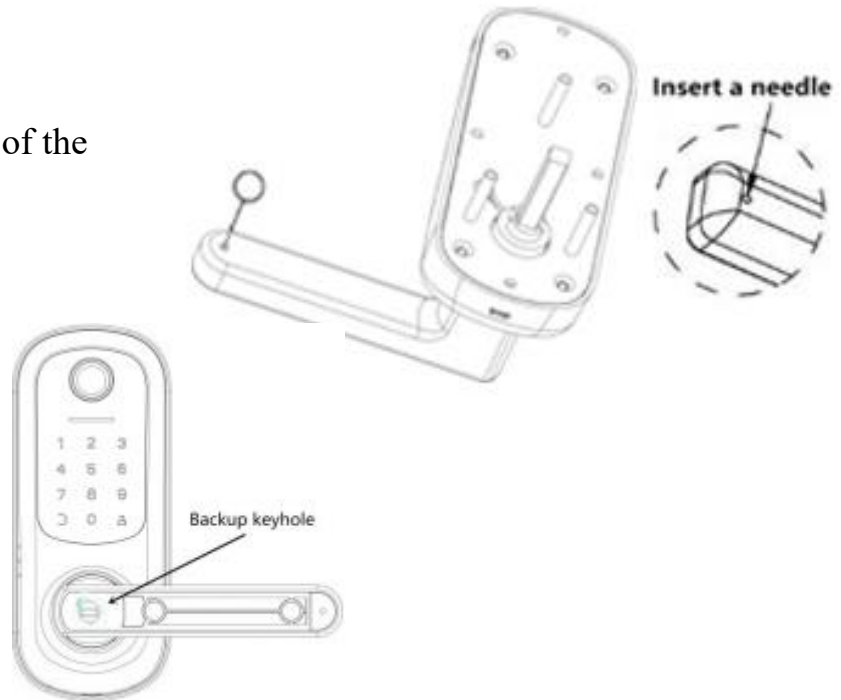


## 3. Backup Key

## Remove the cover cap (2

ways).

**Method 1:** Press the end of the outer handle to pry up the cap.



**Method 2:** Insert a needle into the little hole to push the cap off.

Insert the key and turn right 90 degree. Press down the handle to open door.

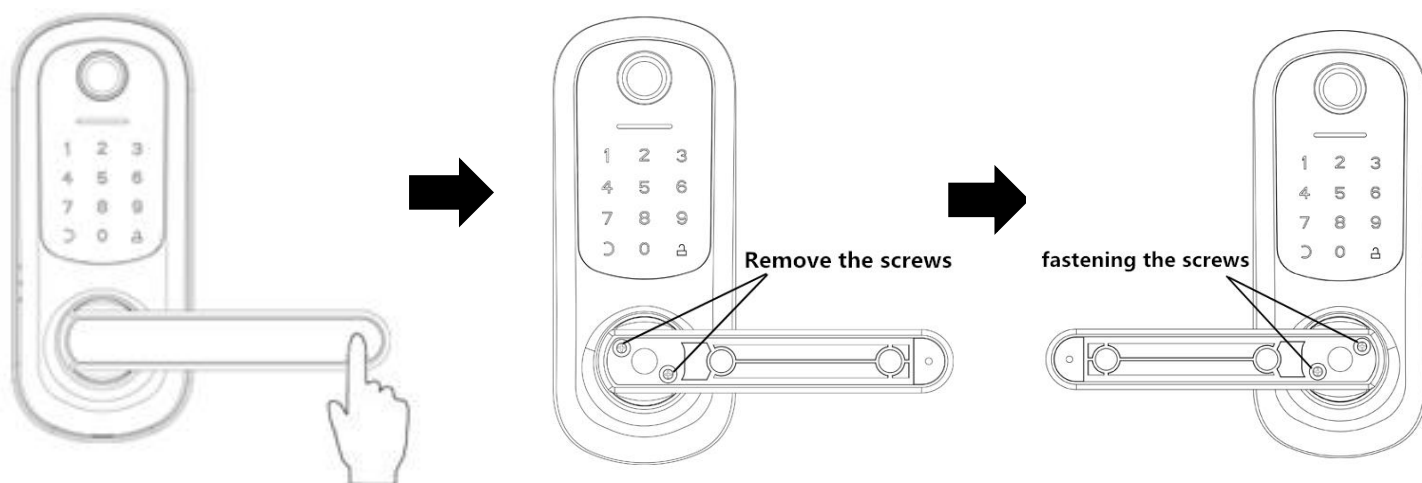
***Notice:** Please put the backup keys in other place.*

## 4.Initialization

Remove the battery cover and press the “SET” button for 5 seconds, lock will sound 'Please enter the initialization passcode'. The initial passcode is 000+ ” . The lock will sound ‘Delete administrator successful’ means that you have initialized the lock successfully.

## II. Installation Guide

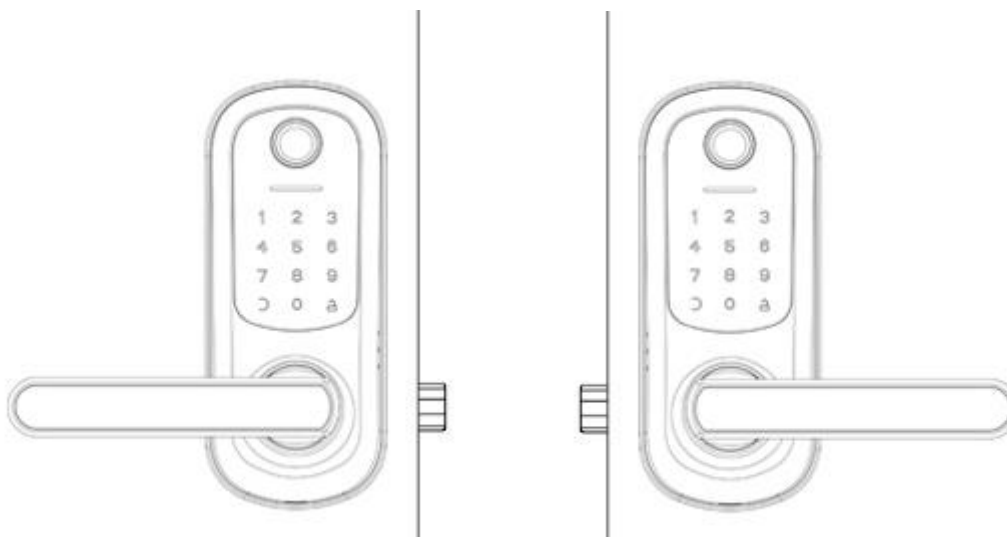
### 1. Change Handle Direction



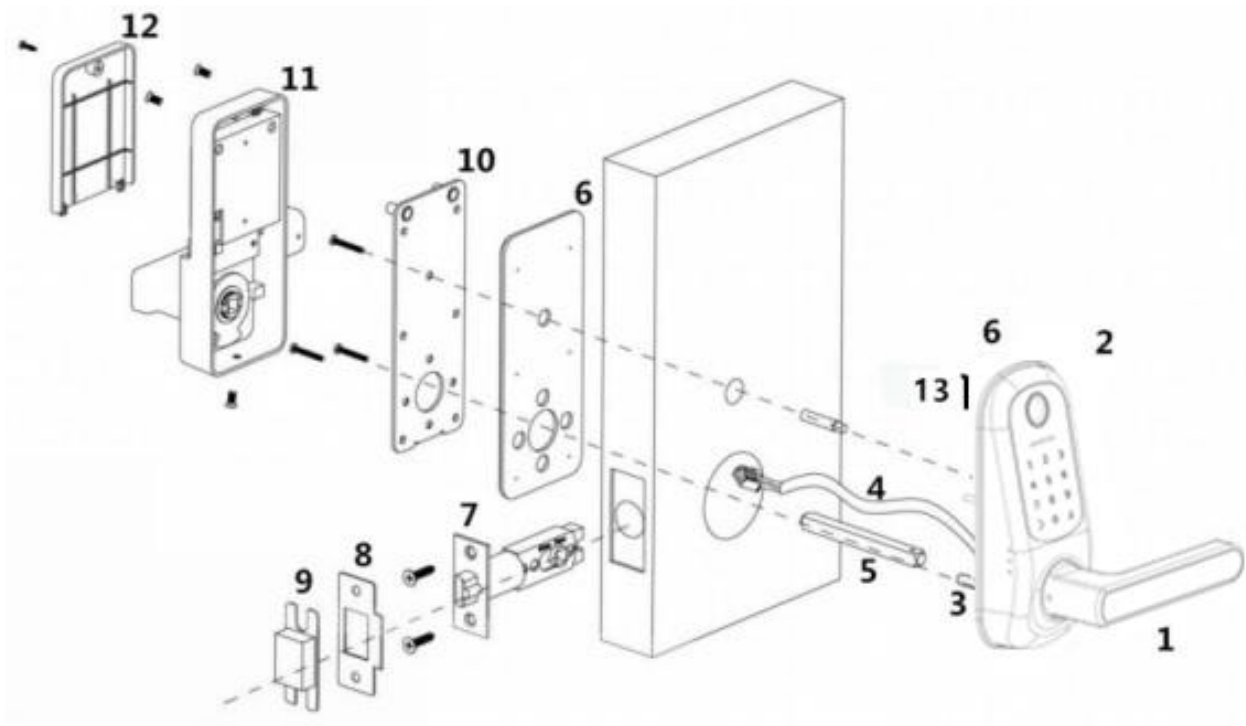
Remove the cover cap and remove the screws, take off the handle.

Install the handle in the direction you need then fastening the screws.

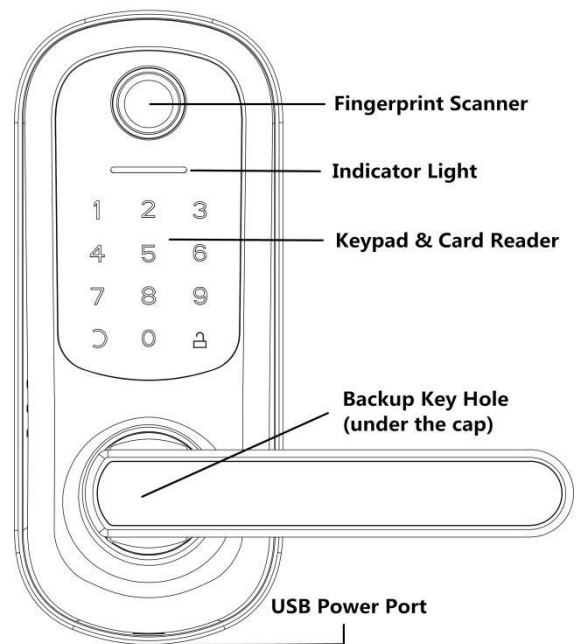
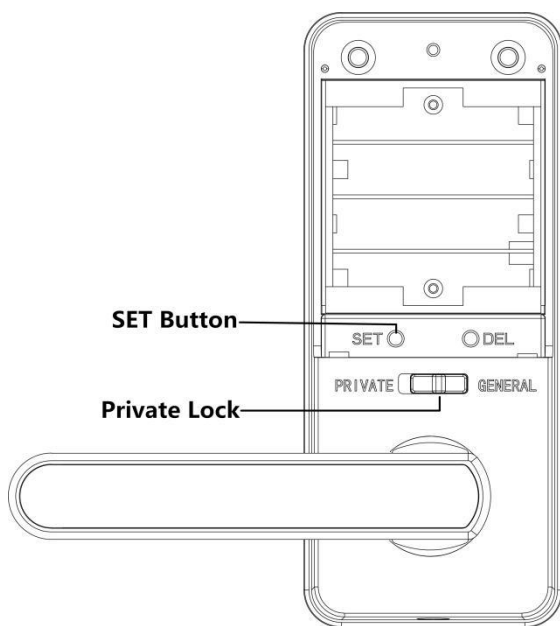
(Notice: The way to change the inner lock's handle direction is the same as the outer lock.)



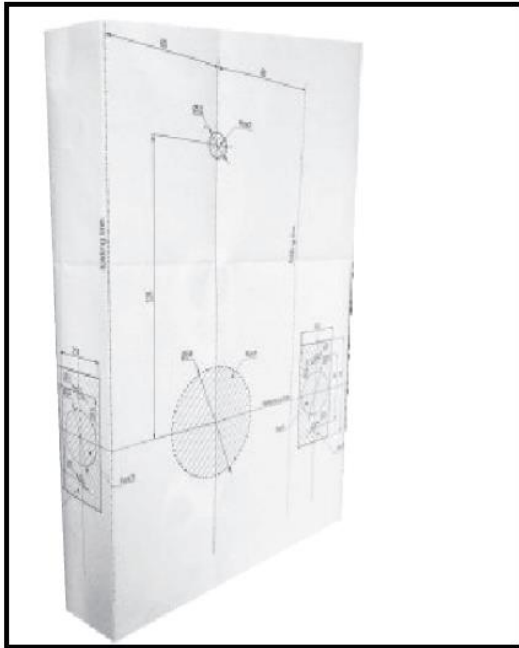
## 2. Overview



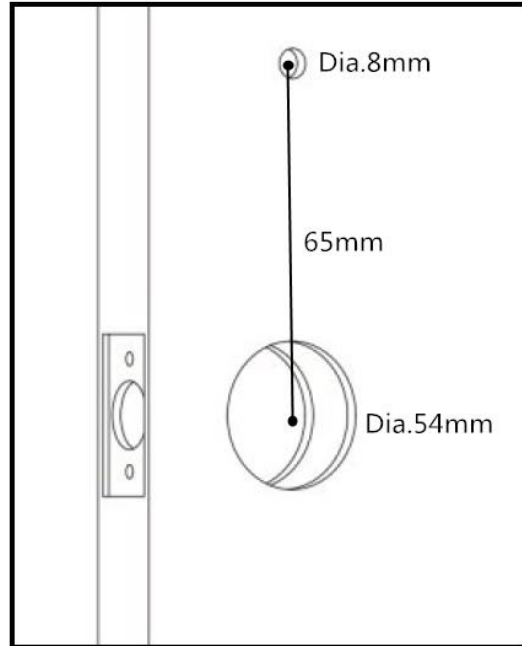
1. Outer Handle   2. Outer Lock   3. Screws Pillar   4. Data Cable  
 5. Square Spindle   6. PVC Sheet   7. Latch   8. Strike Plate   9. Bottom Case  
 10. Metal Plate   11. Inner Lock   12. Battery Cover   13. Pin (fixed square spindle)



### 3.Installation Diagram



**1. Place the template on the door to make the holes, and then drill holes for installation.**



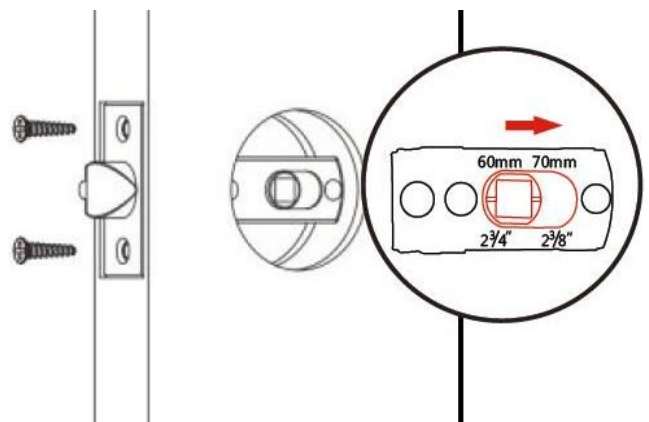
**2. Determine the backset for your door.**

#### **3.1 Install the latch**

1.Adjust the length of the latch according to the distance from the door hole center to the door edge.(60mm or 70mm)

2.Insert the latch in the hole and tighten screws.

3.Install the bottom case and strike plate on door frame.(Accessories numbered 8 and 9 on the page 5 Overview)





### 3.2 Install the outer lock with square spindle

1. Select the suitable **square spindle** that fit your door thickness. (shorter : 35~45mm; longer: 45~55mm)



2. Find the little pin in the accessories bag. Install the square spindle, **through the little hole with the pin to fixed the spindle on the outer lock. Bend the bottom of the little pin to hold it in place.** (Please be sure align the position of the little hole)

Select the suitable square spindle

Shorter: 35mm-45mm  
Longer : 45-55mm

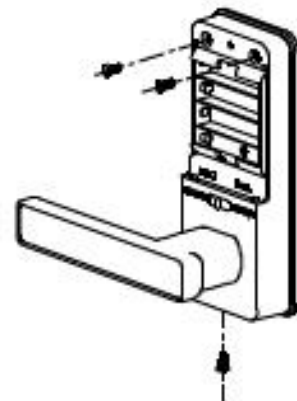
Through the little hole with the pin to fix the spindle and bend the bottom part of the pin

### 3.3 Get the metal plate

1. Find the **inner lock** and take off the battery cover.

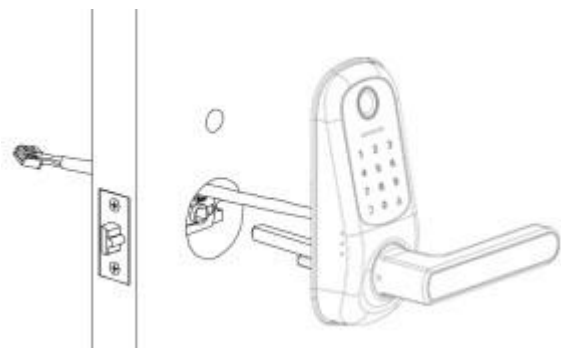
2. Remove these 3 screws.

3. Get the metal plate and PVC sheet. (Numbered 10 and 6 on the page5 Overview)



### 3.4 Install the outer lock

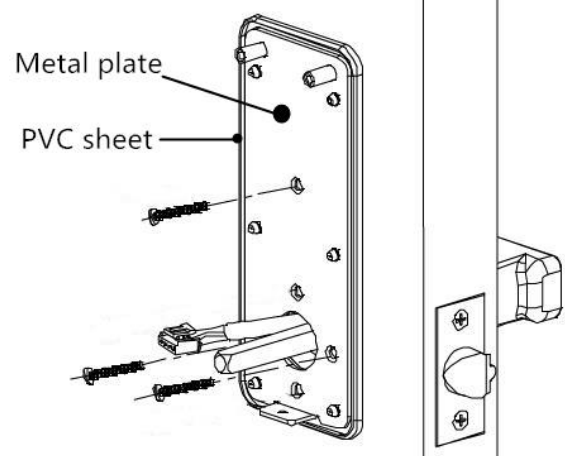
Let the data cable goes on the top of latch. Make sure the square spindle and 2 screws pillar through the latch holes.



### 3.5 Install the metal plate

1. Select the suitable screws that fit your door thickness. (shorter : 35~45mm; longer: 45~55mm)

2. Install the metal plate to the door and tighten these 3 screws.



### 3.6 Install the inner lock

1. Connect the data cable to the inner lock.

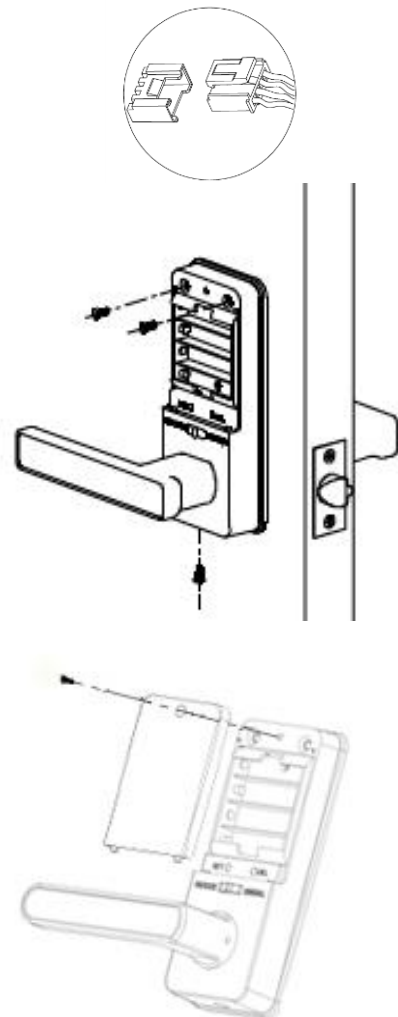
2. Install the inner lock on the metal plate and fasten with **3 short screws** to fix it on the door.

3. Install **4pcs AA dry batteries**. (No include)

**(Warm Tips: Rechargeable batteries are not recommended, because most rechargeable battery's voltage is 1.2 volts.)**

4. Install the battery cover and fasten with **1 screw** to fix it on the lock.

5. Programme the lock by TTLock APP.



# III. Operation Programming

## 1.Pairing Lock to Phone App

Please put your phone near the lock when programming.

### 1.1 Download the App " TTLock"

Android Mobile Phone—Search "TTLock" from Google Play. Apple Mobile Phone —please search "TTLock" from App Store.



### 1.2 Register and Login the Account

LoginRegister

Phone number/Email

Password

Login

[Forgot Password?](#)

←Register

EmailPhone

Enter your Email

Password

Confirm Password

Verification Code

Get Code

Your password must have 8-20 characters, and include a minimum of two types of numbers, letters and symbols

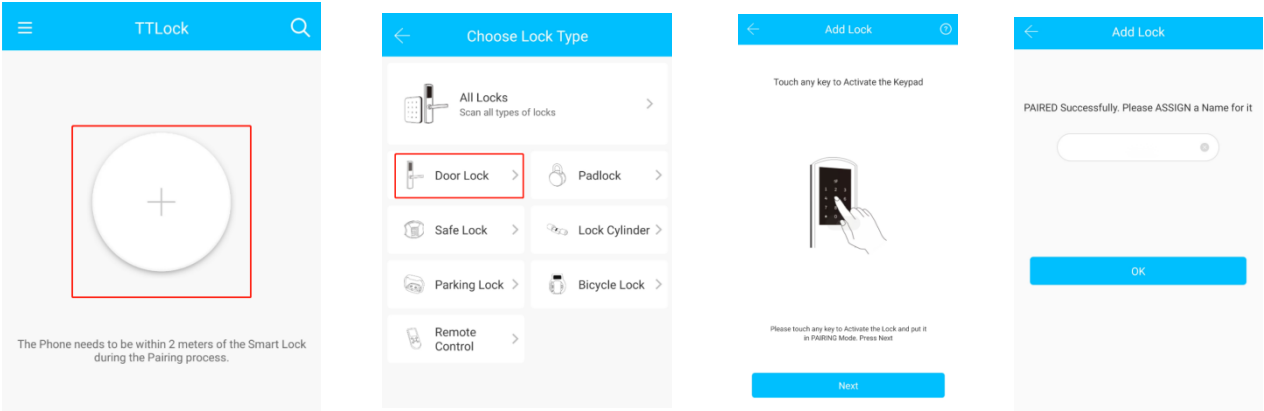
Register

By Registering you agree to our Privacy Policy

### 1.3 Match the Lock to the Application

Please follow steps below when you match the lock. Please turn on the phone Bluetooth. When you add lock, you need to touch the screen of the lock after installing the lock and installing the battery, match the blue icon lock, and set the name for the

lock.



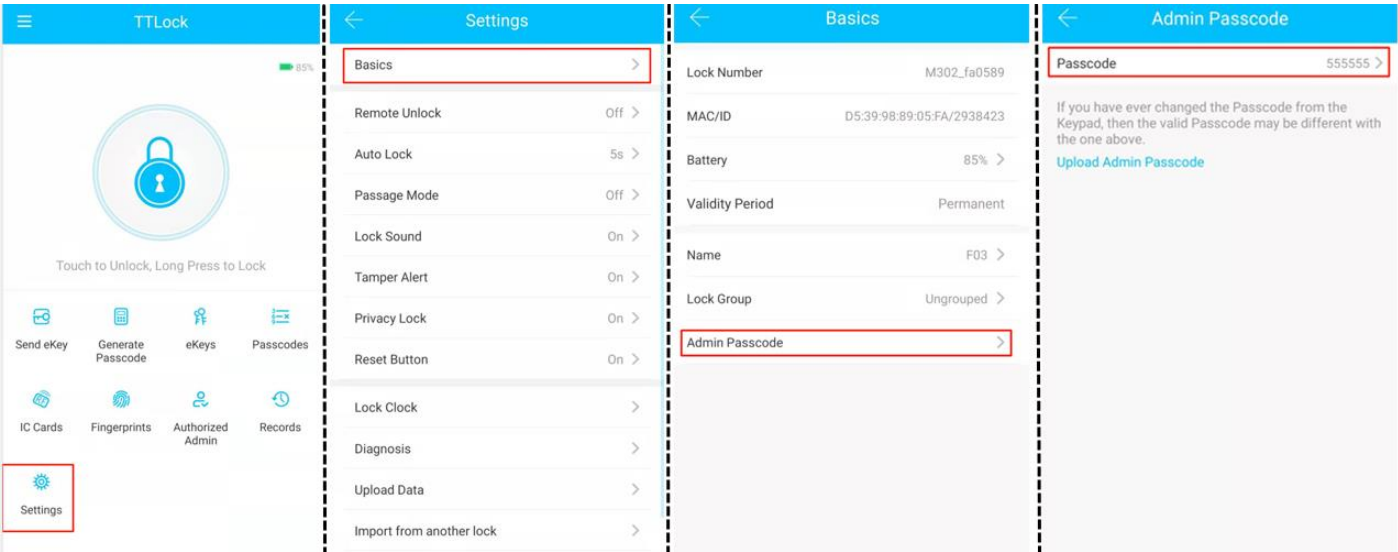
**Note:** If the smart lock is in a non-addable state, please initialize the lock.(Refer to Page 4 Initialization)

**2.TT LOCK App Operating**

**2.1 Account Information Change**

Once the lock is added successful, the TTLock App account becomes the administrator of the lock. And an administrator passcode for the lock will be generated at the same time. You can change the administrator passcode follow the steps below. Each account can be added with multiple smart device Locks for management.

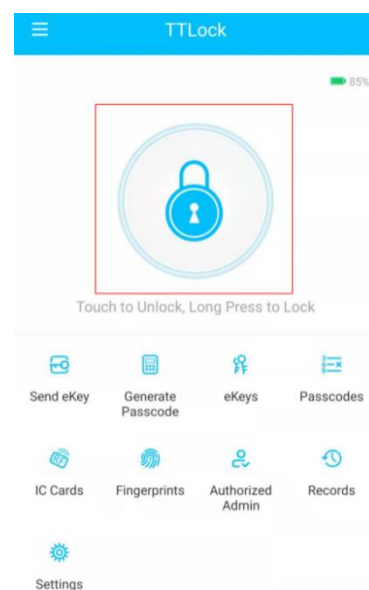
Press **Setting** → **Basic** → **Admin Passcode**



**Note:** When the inner lock switches to the privacy mode (Refer to the Page 2 to learn about Private Lock), only the administrator passcode and the administrator APP account can unlock the lock.

## 2.2 Lock/Unlock

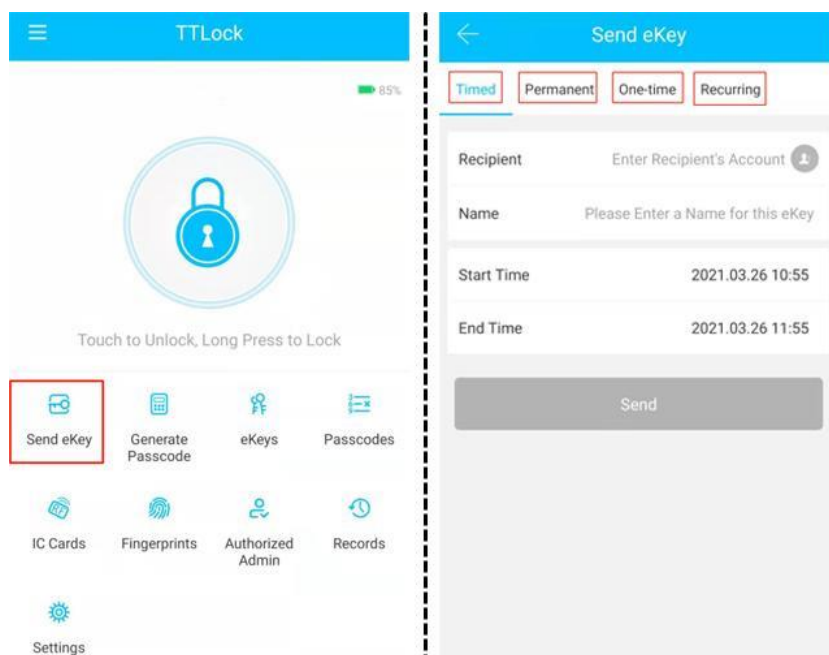
Press for unlock, long press for lock. It requires your smart phone and Bluetooth lock to be within a certain range.



## 2.3 Send ekey

You can add another account on the app. This way your family can also control the Bluetooth lock via the app-Support authorized users to Limit time, Permanent, One-time, Recurring control smart Lock.

**Note:** The users also need to register the TTLOCK APP Account.




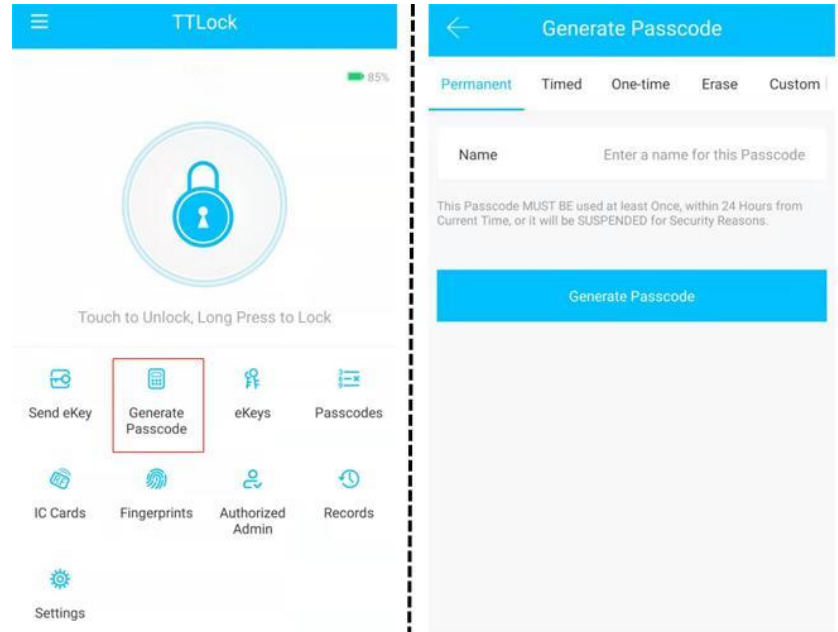
## 2.4 Generate Passcode

Generate or customize the passcode of the Bluetooth lock.

Generate or customize permanent, one-time, time-limited, recurring passcode.

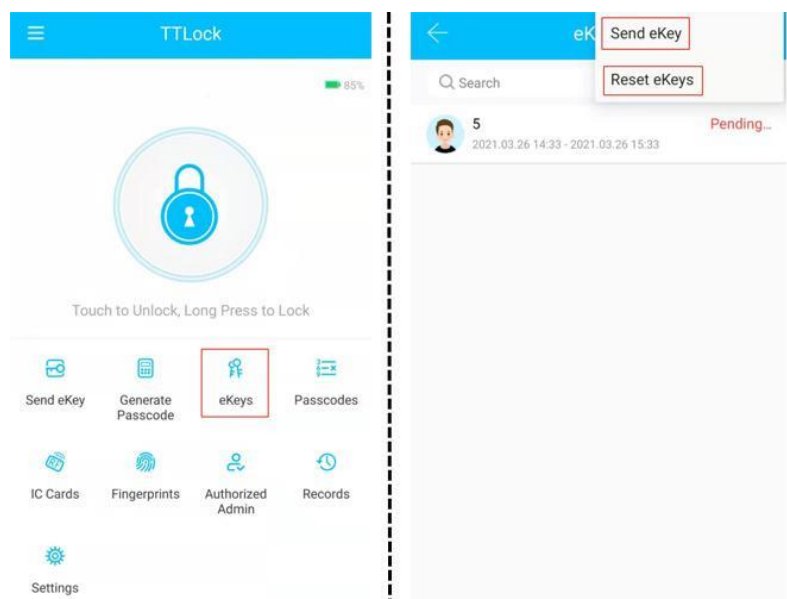
**Note:** Generate the passcode to clear the passcode that Bluetooth lock stored by "Erase". Once used, in addition to the admin passcode.

(You can unlock the lock by: input the password you have set + )



## 2.5 e keys


Manage the authorized accounts in "Send eKey". Admin can clear eKey, reset eKey, send eKey etc.

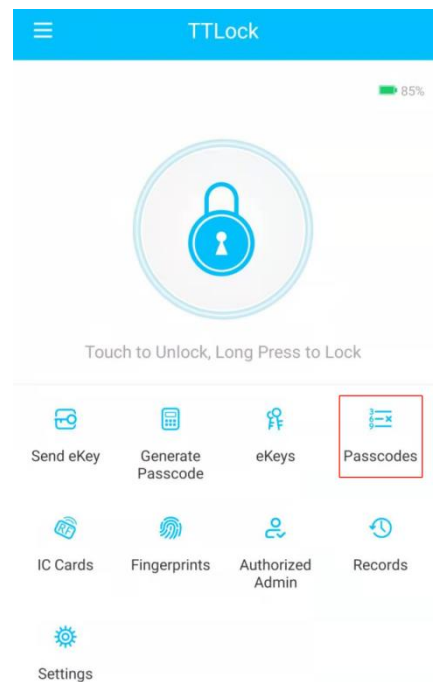


## 2.6 Passcodes

It records all passcodes stored by the Bluetooth lock you had set.

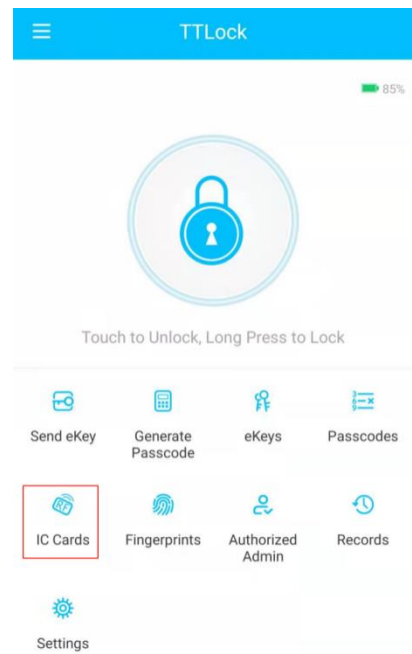
In addition, it can also reset, generate, upload passcodes.

(You can unlock the lock by: input the password you have set + )



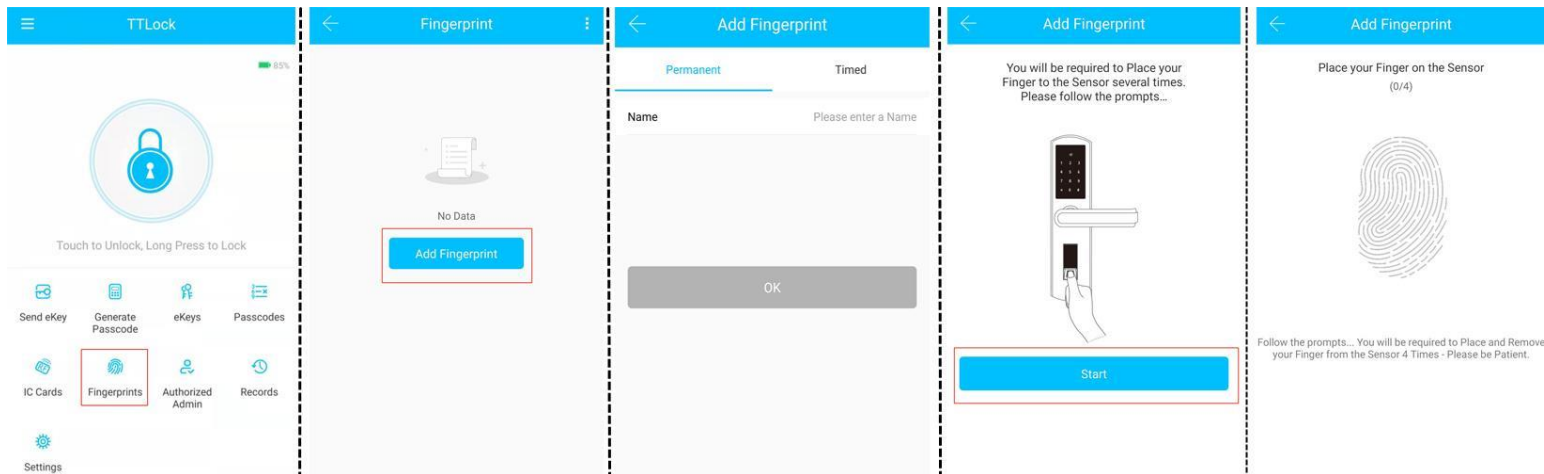
## 2.7 IC Cards

You can match two types of IC card: Permanent or Timed. Place the card against the card reader sensor on the smart Lock(keypad panel).



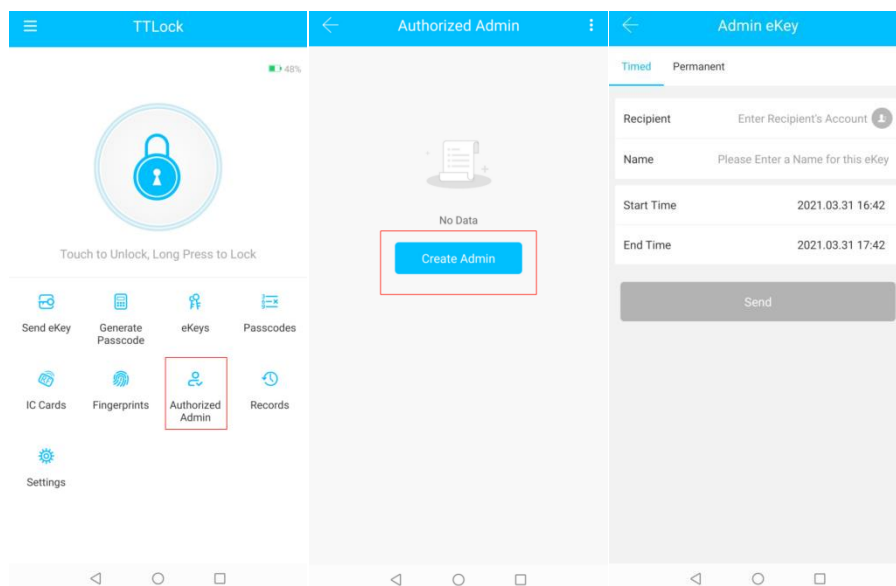
## 2.8 Fingerprints

You will be required to Place and Remove your finger to the sensor 4 times please follow the prompts.



## 2.9 Authorize Admin

You can authorize other TTLock App account as admin. After authorization is successful they will have the same functions as admin except for authorize admin.

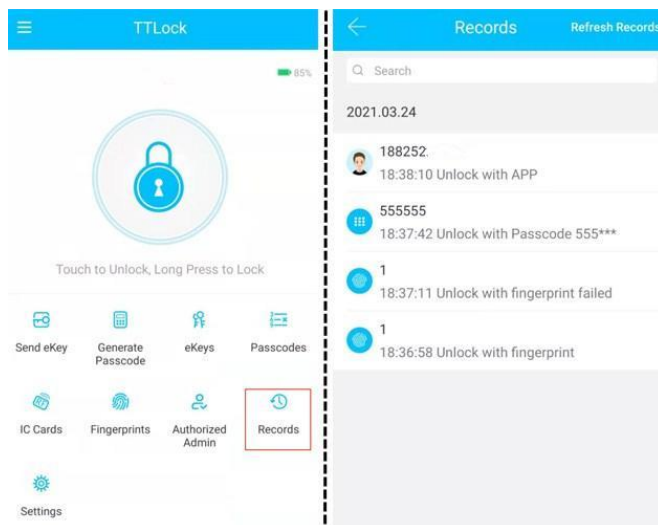




## 2.10 Records

It records the time and manner of the smart lock when someone opening or closing.

Manage your Bluetooth lock safely and efficiently.

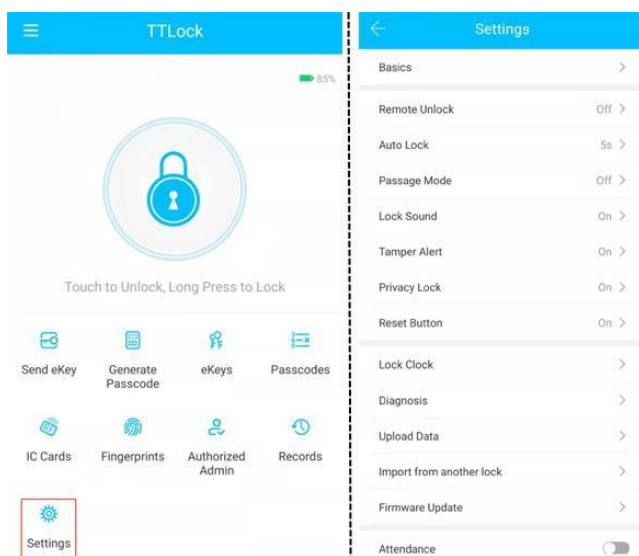


## 2.11 Settings

It have the function about the Bluetooth Lock function setting, lock information setting, remote unlocking, auto-off time, lock sound, time proofread, record reading, etc.

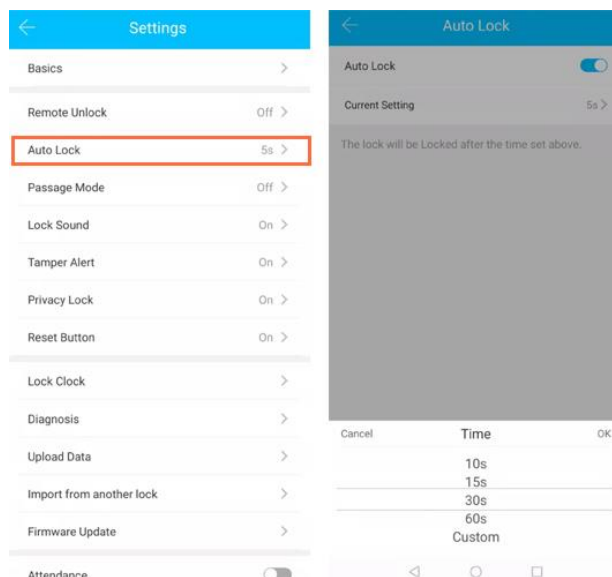
You can find the information about the lock such as battery power, admin passcode.

**Note:**The admin passcode will not be cleared when erase passcode, other passcode will be cleared.

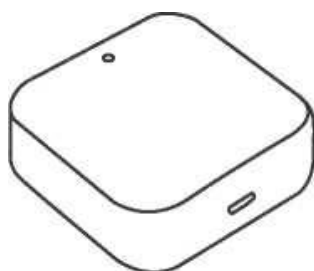


If you forget to lock your door often, you could to set "Auto Lock".

Set the time for automatic locking in your needs, so you don't have to worry about security accidents due to being unlock.



## 2.12 Remote Control



Remote control support needs an extra additional Wi-Fi Gateway(**sold separately**). Match the gateway, smart phone, app then the smart Lock can support remote control lock.

**Note:** If you want to connect with Amazon Alexa, you need to buy a WIFI Gateway.

## 3. Add user by the lock

**Note:** Except adding users through the TTLock App, you can also add users directly on the lock follow the steps below.

Remove battery cover and press SET button. Then please verify administrator by pressing

“ ↺ +85 + 🔓 + administrator passcode + 🔓 ”

( you can view or set the administrator passcode fellow the page 10.)



**Please enter fingerprint, passcode or access card**

Finger print: press **the same fingerprint, for 4 times.**

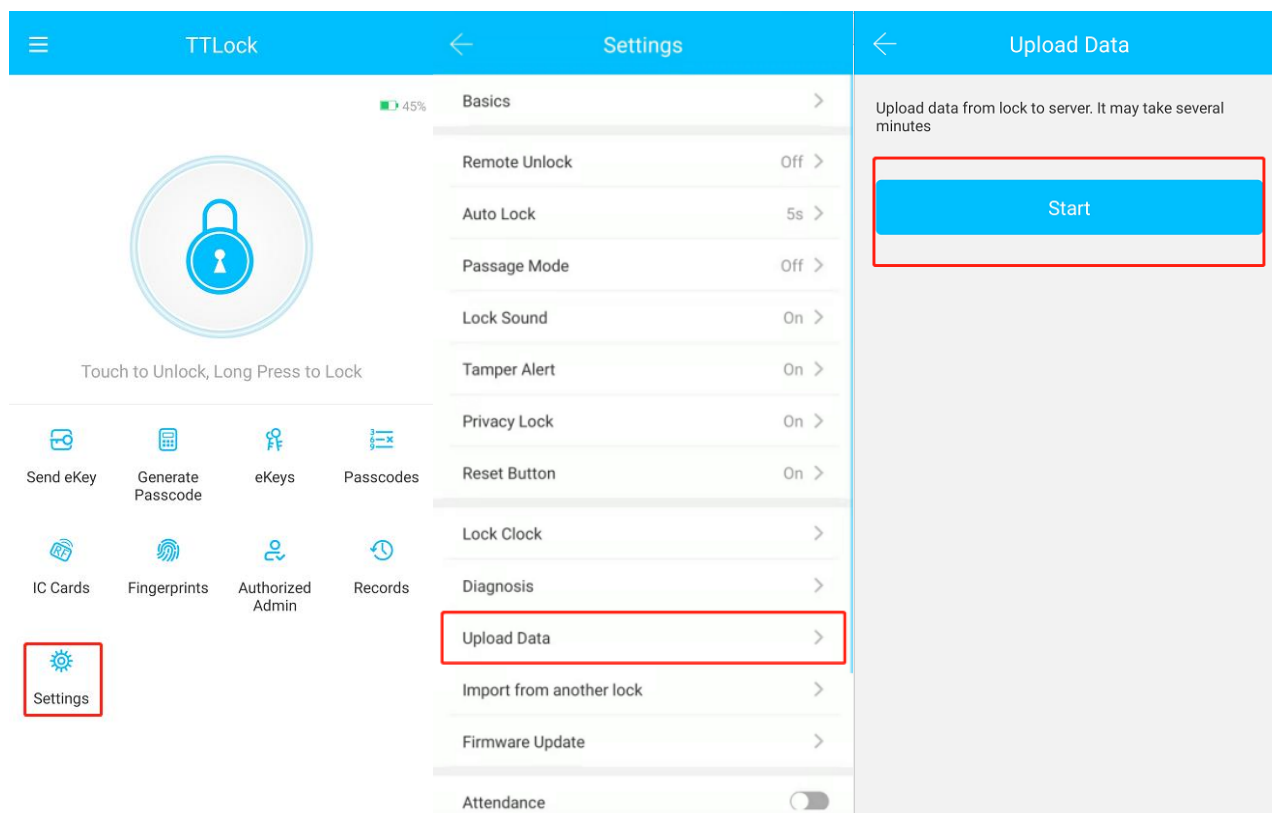
Passcode: press 6~12digits Passcode + 🔓 , **for twice.**

Access card: put a access card close to the keypad, for 1 time.

After you create first user, system will automatically proceed to register the next user. You can continue to register more or touch ↺ key to cancel it.

**Note:** For the users that you add directly with the lock, please synchronize the data through the TTLock App follow the step below, so that you can also manage the users in the App.

Operation: Select **Setting** —————> **Upload Data** —————> **Start**



## **4.Application FAQ**

### **Q1. How to do if I cannot match the door lock (the name is gray) in the TTLock?**

A1. Try to initialize the lock. Please find the initialization on page 3 of the manual. And follow the steps on page 9 to pair the lock to TTLock App.

### **Q2. How to set the account Passcode?**

A2. TTlock - Upper left corner(menu button) -Settings - Click on your profile picture(edit) - Reset Passcode.(Refer to Page 10 **Account Information Change**)

### **Q3. How to set/check the admin passcode?**

A3. TTLock - Settings - Basics- Admin Passcode.

### **Q4. How to set auto lock time?**

A4. TTLock - Settings - Auto Lock. Please Calibrate Time in [Lock Clock] and Enter the [Firmware Update] to confirm that your APP is the latest version.

### **Q5. What is [Send e-key]?**

A5. Send e-key to authorize to other accounts. The recipient also needs to download TTLock and register an account. Recipients will have permission to control the lock via their phone APP.

### **Q6. How to Erase/Edit the guest passcode?**

A6. Erase: Generate Passcode - Erase- Click Generate - Enter this passcode on the keyboard and all guest Passcodes will be erased. Edit: Passcodes - Click on a code - You can edit in [Passcode].

## FCC Statement

This equipment has been tested and found to comply with the limits for a Class B digital device, pursuant to part 15 of the FCC Rules. These limits are designed to provide reasonable protection against harmful interference in a residential installation. This equipment generates, uses and can radiate radio frequency energy and, if not installed and used in accordance with the instructions, may cause harmful interference to radio communications. However, there is no guarantee that interference will not occur in a particular installation. If this equipment does cause harmful interference to radio or television reception, which can be determined by turning the equipment off and on, the user is encouraged to try to correct the interference by one or more of the following measures:

- Reorient or relocate the receiving antenna.
- Increase the separation between the equipment and receiver.
- Connect the equipment into an outlet on a circuit different from that to which the receiver is connected.
- Consult the dealer or an experienced radio/TV technician for help.

Caution: Any changes or modifications to this device not explicitly approved by manufacturer could void your authority to operate this equipment.

This device complies with part 15 of the FCC Rules. Operation is subject to the following two conditions: (1) This device may not cause harmful interference, and (2) this device must accept any interference received, including interference that may cause undesired operation.

### RF Exposure Information

The device has been evaluated to meet general RF exposure requirement. The device can be used in portable exposure condition without restriction.