

Portable Label Maker



Read thoroughly before using

P22

Thanks for choosing P22 printer

- The paper bin must be clean. Any debris will catch and damage the print head while printing.
 - Use alcohol to clean the paper bin and print head.
 - Do not disassemble the printer or attempt any self-repairs. Power off the printer if any malfunctions occur.
 - Charge in a cool and ventilated room. Do not expose the printer to high humidity or temperatures.
 - Keep away from water.
 - If any strange scents or smoke comes from the printer, poweroff and unplug immediately.
 - Avoid dropping or shaking the printer to prevent damage.
 - Do not open the cover while it is printing.
 - Do not touch the print head immediately after printing as it will be HOT.
 - Use a soft clean cloth to clean the outside of the printer.
 - High temperatures may result in poor print quality.
 - Use label paper offered by printer manufacturer for best results. Use of other label printers may result in poor print quality or damage to the printer.
 - The longevity of the printed labels depends on the quality of the label paper.
 - Choose high quality label paper if you need them to last.
 - Keep away from children.
 - Store in a clean and dry environment.
- Printer does NOT come with an adapter. Use one with a rating of 5V 1A.
- This printer can only be used in non-tropical environments.
 - The printer may cause radio interference. Take any necessary precautionary measures.

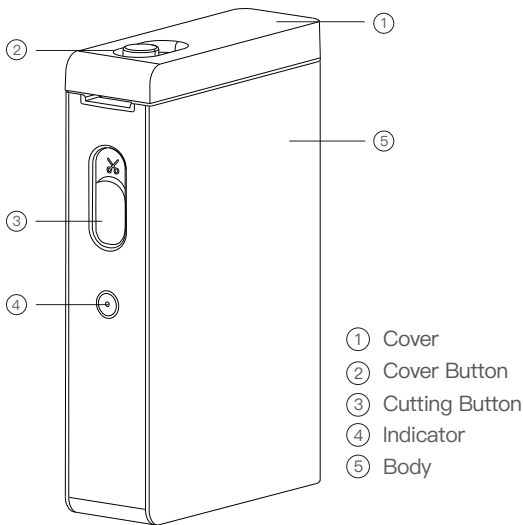
Print Technology	Direct Thermal
Resolution	203 DPI
Supported Paper Width	15mm (12mm available)
Supported Paper type	Gap Paper/ Continuous Paper
Connection	Bluetooth
Paper Cutting	Manual Paper Cutting
Battery	1300 mAh
Charge	Type-C
Input	5V 1A DC
Work Environment	5~40°C,90%RH (no condensation)
Storage Environment	5~40°C,90%RH (no condensation)
Life expectancy	50 km
Product Size	79.5x30x130.6 mm

The contents of this manual may change without prior notice. The components, hardware, software, and technology may be upgraded for better functionality.

Contact sales or customer support with any questions or concerns.

Figure

03



APP Download

04

For Android and Apple users, you can search “Labelnize” in Google Play or APP store and install. The second method is scan the QR below code.



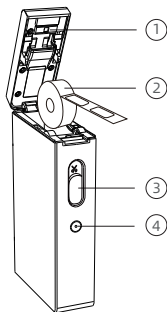
Install Label Printer Paper

05

1. Slide the cover button to the other side to open the cover.
2. Load the paper roll in the paper bin. Refer to the image for the correct placement.
3. Unroll the paper enough so that it sticks out of the printer slightly.
4. Close the cover. Press the power/ feed button to calibrate the label and test the printer.

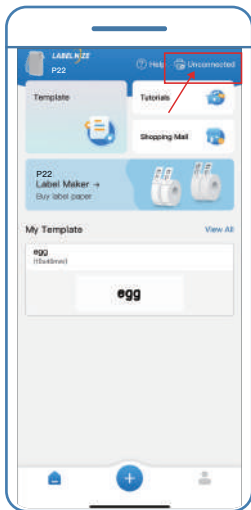
Notes:

1. Double-click the power/ feed button can return the first label to the paper bin.
2. Use label paper offered by printer manufacturer for best result.

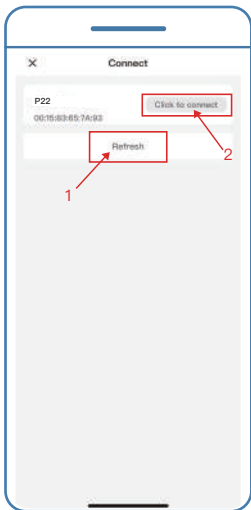


- ① Print Head
- ② Label Paper Roll
- ③ Cutting Button
- ④ Power/ Feed Button

1. Turn on Bluetooth on your phone
2. Long press the power button to start the machine
3. Open the “Labelnize” App, Tap “UnConnected”
4. Find “P22”, tap “Click to connect”



③



④

1. Tap “+” to edit label
2. Click the ⚙ key to customize the label size and paper type



①



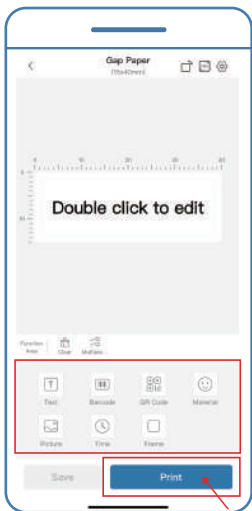
②

3. Tap “Text” to input text

4. Edit function description After editing, tap to “Print”



③



④

5. Select the copies and print

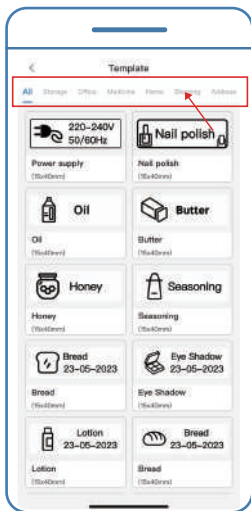


⑤

1. Click “Template”
2. Select a template based on your needs



①



②

3. Click the template to edit
4. Click "Print"



③

Indicator	Status
Flash Green	Charging
Light off	Fully charged
Flash Red	Print head overheat or low battery, printing can't be finished
Steady Red	Cover is open or out of paper, printing can't be finished
Steady Blue	Bluetooth connection successful

Q: What are the dimensions of the included label roll?

A: The included roll contains white labels that are 15*40mm and can be found inside paper bin.

Q: Do I need to register to use the printer?

A: Registration is not necessary. Registered accounts are able to save and retrieve label templates.

Q: Why is the printer printing blank labels?

A: It may be because the label paper is laid reversely, the labels must be face up.

Q: Why does the printer continuously feed labels?

A: (1) It may be because there is label or residues sticking on the detectors on the cover or in the paper bin.

(2) It may be because there is label or residues sticking on the print head. The label paper failed to be detected.

(3) The sensors could be blocked with debris. Clean the sensors and print head located on the top cover.

Q: Why does the printout look gray or faded?

A: Use label paper offered by printer manufacturer for best results. You can also try cleaning the print head unit located on the top cover with rubbing alcohol.

Q: Why does the printer skip a label or print incomplete?

A: (1) Check if the label size and software print template match.

(2) Reinstall the label roll and manually press the feed button once to

allow the printer to detect the label gap position.

(3) Using non-genuine labels may result in poor print quality or mismatched sizes. Use genuine labels.

Q: Why did the printer suddenly stop printing?

A: Certain safety measures are in place. The most common reasons are going to be the printer ran out of paper or it is low on battery.

Q: How can I center the label content when editing?

A: (1) On the right side of the [Text] section, there are options of aligning center, left, or right—click to adjust the text position in the text box.

(2) For other patterns or content, you can adjust the position by clicking on it and selecting the [Align] option. It can also be moved with fingers.

We offer an extensive warranty for all products that extend through 1 YEAR of the order date. This warranty covers quality related issues and product defects.

During the warranty period, malfunctions occur under normal use in accordance with the instruction manual(determined by our company's official staff), we can send you a replacement product.

This warranty does not apply in cases of abuse, mishandling, unauthorized repair of the product, or the inevitable . If you have any question about this warranty or would like additional information, please contact us directly via e-mail on the packing box. Please keep the original box, packing materials and all documentation in the event that service is required.

This equipment has been tested and found to comply with the limits for a Class B digital device, pursuant to part 15 of the FCC Rules. These limits are designed to provide reasonable protection against harmful interference in a residential installation. This equipment generates, uses and can radiate radio frequency energy and, if not installed and used in accordance with the instructions, may cause harmful interference to radio communications.

However, there is no guarantee that interference will not occur in a particular installation. If this equipment does cause harmful interference to radio or television reception, which can be determined by turning the equipment off and on, the user is encouraged to try to correct the interference by one or more of the following measures:

- Reorient or relocate the receiving antenna.
- Increase the separation between the equipment and receiver.
- Connect the equipment into an outlet on a circuit different from that to which the receiver is connected.
- Consult the dealer or an experienced radio/TV technician for help.

Caution: Any changes or modifications to this device not explicitly approved by manufacturer could void your authority to operate this equipment.

This device complies with part 15 of the FCC Rules. Operation is subject to the following two conditions: (1) This device may not cause harmful interference, and (2) this device must accept any interference received, including interference that may cause undesired operation.

RF Exposure Information

This equipment complies with FCC radiation exposure limits set forth for an uncontrolled environment. This equipment should be installed and operated with minimum distance 20cm between the radiator and your body.

English: This device contains licence–exempt transmitter(s) / receiver (s) that comply with Innovation, Science and Economic Development Canada’s licence–exempt RSS(s). Operation is subject to the following two conditions:

- (1) This device may not cause interference.
- (2) This device must accept any interference, including interference that may cause undesired operation of the device.

The digital apparatus complies with Canadian CAN ICES–3 (B) / NMB–3(B).

French: Cet appareil contient des émetteurs / récepteurs exempts de licence qui sont conformes aux RSS exemptés de licence d’Innovation, Sciences et Développement économique Canada.

L’exploitation est soumise aux deux conditions suivantes :

- (1) Cet appareil ne doit pas provoquer d’interférences.
- (2) Cet appareil doit accepter toute interférence, y compris les interférences susceptibles de provoquer un fonctionnement indésirable de l’appareil.

l’appareil numérique du ciem conforme canadien peut – 3 (b) / nmb – 3 (b).

This device meets the exemption from the routine evaluation limits in section 2.5 of RSS 102 and compliance with RSS 102 RF exposure, users can obtain Canadian information on RF exposure and compliance.

cet appareil est conforme à l'exemption des limites d'évaluation courante dans la section 2.5 du cnr – 102 et conformité avec rss 102 de l'exposition aux rf, les utilisateurs peuvent obtenir des données canadiennes sur l'exposition aux champs rf et la conformité.

This equipment complies with Canada radiation exposure limits set forth for an uncontrolled environment.

Cet équipement est conforme aux limites d'exposition aux rayonnements du Canada établies pour un environnement non contrôlé.

This equipment should be installed and operated with minimum distance 20cm between the radiator & your body.

Cet équipement doit être installé et utilisé à une distance minimale de 20 cm entre le radiateur et votre corps.