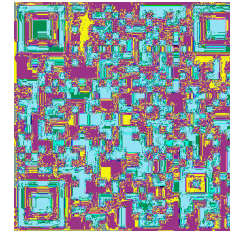


背面



IP camera Q3171 User manual

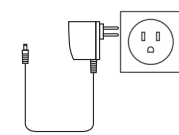


Please scan the QR code
above to download
"V380Pro APP"

A Connect the device



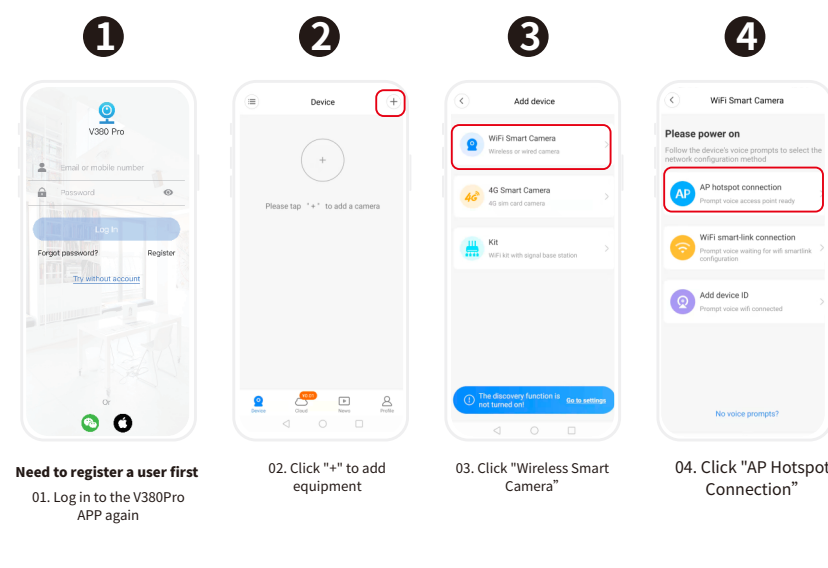
Download APP
Use the mobile phone's "Scan" function to
scan the QR code, download and install "V380Pro"



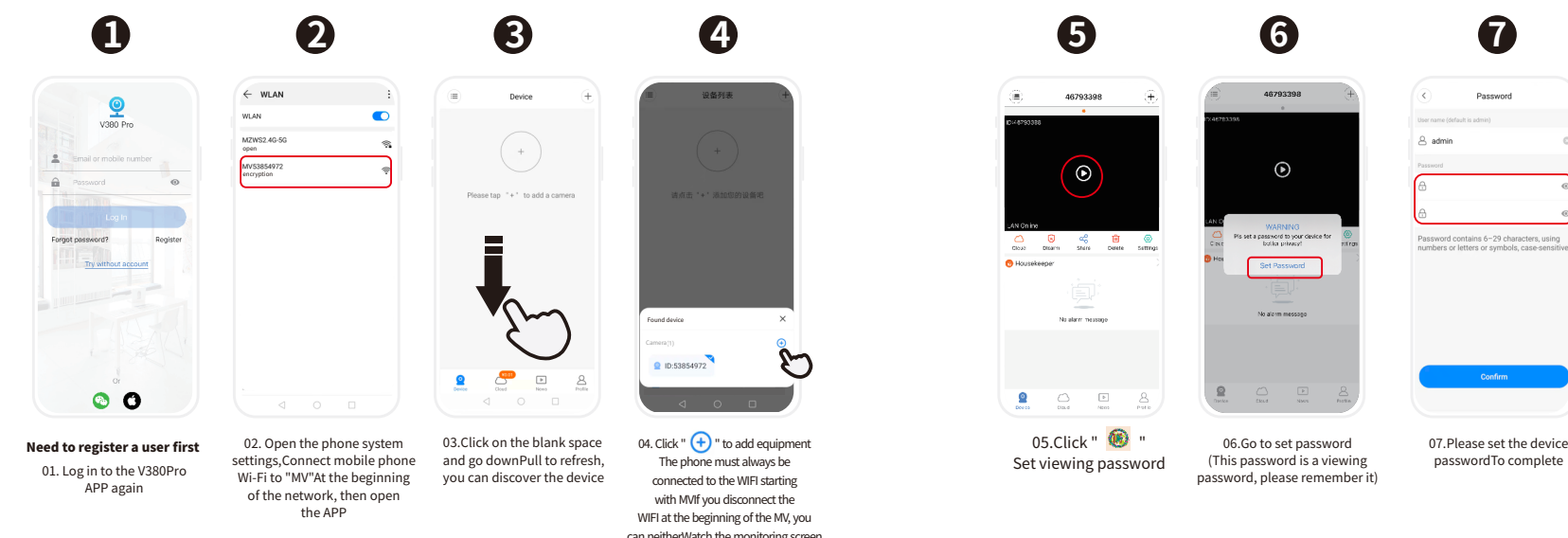
Connect power

Connect the device to the power supply for about 1 minute until the
following beep sounds: System startup, system startup is complete,
hotspot is being established, hotspot is established

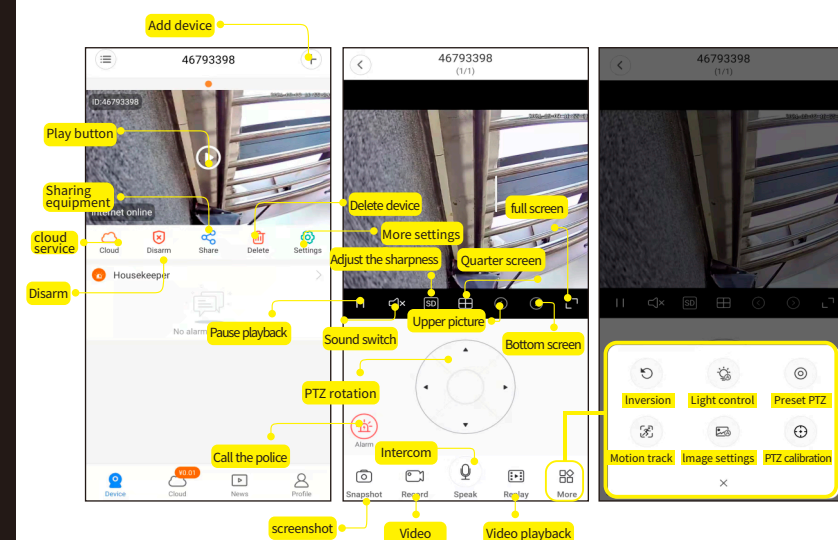
B Wi-Fi connection operation steps



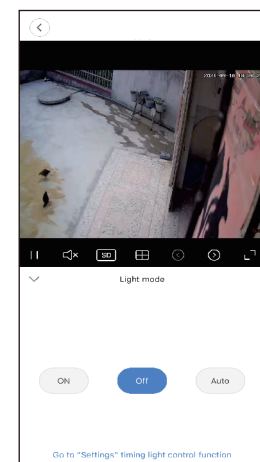
C AP hotspot without internet operation steps



C Function Description



Light control instructions:

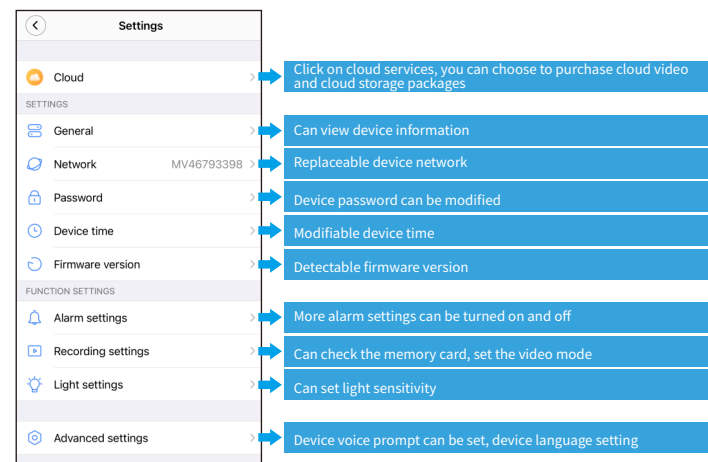


Auto: The default black and white
night vision at night. When an object
passes by, the full-color night vision
is automatically turned on

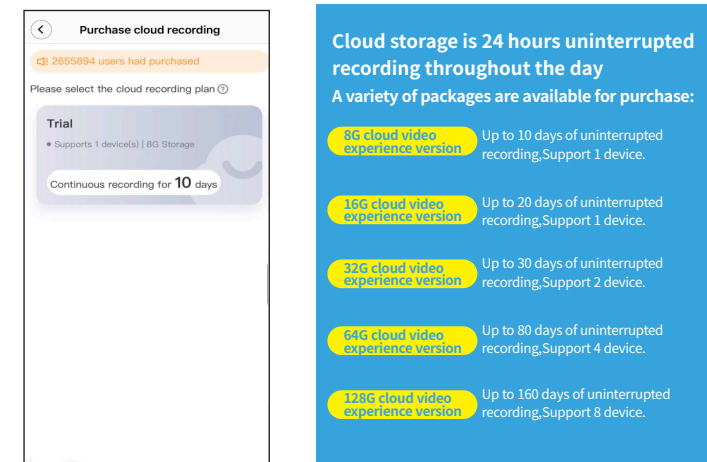
Normally open: the white light can
be turned on manually

Normally off: the white light can
be turned off manually

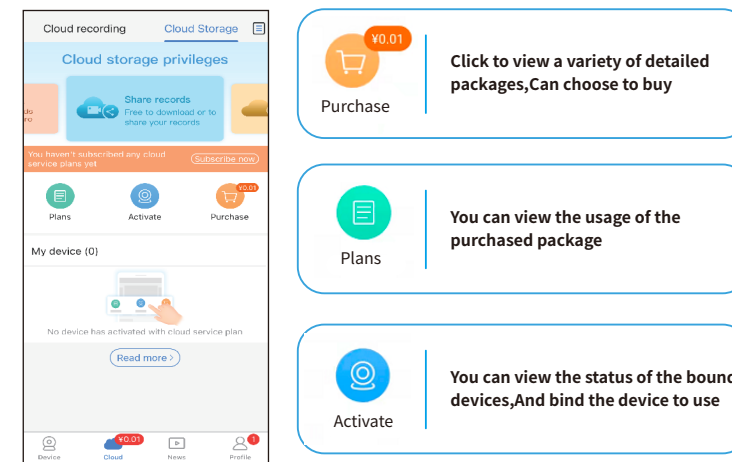
Alarm description:



Cloud video description



Cloud storage description:



common problem

problem	Cause/solution
What should I do if the device is unsuccessfully added?	For the first connection between the camera and the router, please connect to the distribution network at close range. Check whether the wifi password is correct and the phone can connect to the network normally. Restart the router, restart the camera, and try to connect to the Internet again.
What if the display device is offline?	First confirm whether the power supply and network are normal. If there is no problem, power off the camera and restart it. For example, the camera voice prompt system is starting, the system is started, the wifi connection is in progress. The camera voice prompts that the wifi connection is not completed, which means that the camera cannot connect to the router wifi. Check if the camera is too far away from the router, the signal is not good, and the camera cannot be connected to the wireless wifi. Or reset the camera to factory settings, and then reconnect to the network.
Watch screen display password. What should I do if I make a mistake?	Enter the password input that is prompted to set up on the screen when the camera is connected for the first time. The password is a combination of 6-8 digits in English. The factory default user name admin. If you have forgotten the password, you need to restore the camera to factory settings, find the camera to restore factory settings button, Press and hold for about 10 seconds, and the camera voice prompts to restore the factory settings, and you can reconnect to the network settings.

FCC Statement

This device complies with Part 15 of the FCC rules. Operation is subject to the following two conditions: 1) this device may not cause harmful interference, and 2) this device must accept any interference received, including interference that may cause undesired operation.
Note: This equipment has been tested and found to comply with the limits for a Class B digital device, pursuant to part 15 of the FCC Rules. These limits are designed to provide reasonable protection against harmful interference in a residential installation. This equipment generates uses and can radiate radio frequency energy and, if not installed and used in accordance with the instructions, may cause harmful interference to radio or television reception, which can be determined by turning the equipment off and on, the user is encouraged to try to correct the interference by one or more of the following measures:
-Reorient or relocate the receiving antenna.
-Increase the separation between the equipment and receiver.
-Connect the equipment into an outlet on a circuit different from that to which the receiver is connected.
-Consult the dealer or an experienced radio/TV technician for help.
Changes or modifications not expressly approved by the party responsible for compliance could void the user's authority to operate the equipment.

Radiation Exposure Statement
This device complies with RF radiation exposure limits set forth for an uncontrolled environment. This transmitter must not be co-located or operating in conjunction with any other antenna or transmitter.
This device must operate with a minimum distance of 20 cm between the radiator and user body.

正面