

CPLID TV BACKLIGHT

INSTALLATION

1. Test Your Light

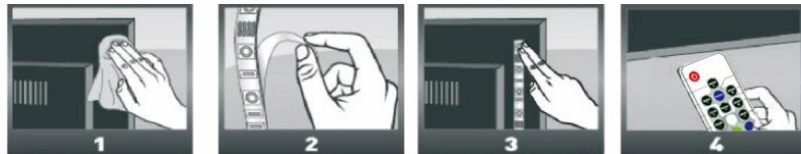
Plug the light into a USB port of your TV, and turn on TV, the light will on. Pull off the plastic piece on the bottom of the remote, and check it.

2. Plan Your Route

Before attaching the strips, measure the area where the strips attaching to, plan the route and let the strips to cover all sides of your TV.

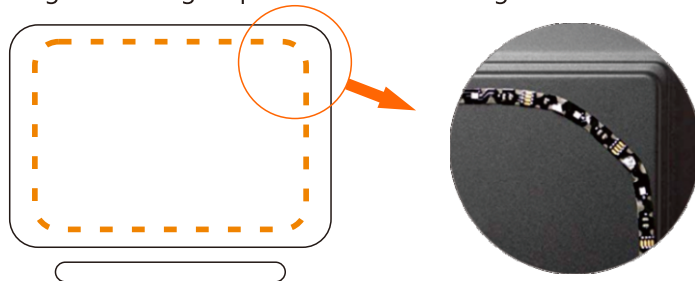
3. Clean the Mounting Surface

Use the provided wipes to clean the mounting surface. The mount surface must be solid, oil-free and dust-free, otherwise the strips will fall down after a while.

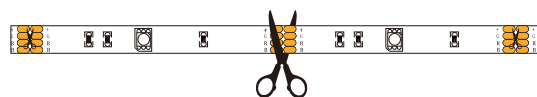


4. Attach the Strips

Peel off the protective film from the adhesive strips, and stick the strips from the USB cable side. Please lightly bend the strips to fit along the TV corners, excessively folding or bending strips will lead to a damage.



5. Cut the excess strips at the "+GRB" mark.



Note: If you have any problems with the light, please feel free to contact us.

Email: phlid@foxmail.com

SPECIFICATIONS

LED STRIPS

Input	DC 5V (USB port) / 1 A
Power	4.5 W
LED Chip	3528 RGB
Color	17 static colors, 38 dynamic modes dimmable
Beam Angle	120°
Back Adhesive	Red 0.4 mm thickness sponge adhesive

REMOTE CONTROL

Control Mode	Remote RF control
Control Distance	Max. 20 Meters
Battery Type	CR2025

OTHERS

Working Temperature	-20°C ~ 45°C
Working Humidity	0% ~ 80% RH
Life Span	40,000 hours

Remote Control

- ON/OFF
- 17 Single color cycle
- Brightness adjust in static color/Speed adjust when light is fade/flash
- Choose a single color, press this, color will fade/flash.
- 3/7 colors fade / 3/7 colors flash
- Pair/Unpair the lights
- On dynamic mode, press , the light will stagnant at current color
press , the light will continue at current mode.



10 kinds of single color

I bought more than one set of this TV lights, and want one remote to control only one light, how to pair the remote with TV lights?

1), Unplug all TV lights from your TV.

2), Plug one TV light, and press "ENCODE" synchronously in 3 seconds when plugged.

3), TV light will flash once or twice, then paired.

How to unpair?

Repeat the above steps but hold down the "ENCODE" button.

Troubleshooting

Symptom	Possible Causes	Solution
Lights turn on or flicker after TV turned off.	TV USB port still be powered when TV is off	Shut down the power of your TV or use the remote to turn off the light
TV light is not on when the TV is turned on	TV USB port can not supply enough power	Re-plug the USB of the light or change a USB port
	If the issue still exist please test the TV light with a wall adapter and report it to us for assistance.	
Remote does not work	Replace the remote battery.	
	Contact us for a remote replacement.	
TV light falls down	Dust pollution	Keep TV back surface dust-free, and replace the adhesive tape

TV light still does not work properly? Text an email to phlid@foxmail.com
We will fix it.

Service Guarantee:

- 1, We offer full refund or return if the product is defective within 30 days from the order date.
- 2, We offer partial refund or replacement if the product is defective within 180 days.
- 3, We offer 365 days online customer support.

Email: phlid@foxmail.com



140X210mm

FCC Statement

This equipment has been tested and found to comply with the limits for a Class B digital device, pursuant to Part 15 of the FCC Rules. These limits are designed to provide reasonable protection against harmful interference in a residential installation. This equipment generates uses and can radiate radio frequency energy and, if not installed and used in accordance with the instructions, may cause harmful interference to radio communications. However, there is no guarantee that interference will not occur in a particular installation. If this equipment does cause harmful interference to radio or television reception, which can be determined by turning the equipment off and on, the user is encouraged to try to correct the interference by one or more of the following measures:

- Reorient or relocate the receiving antenna.
- Increase the separation between the equipment and receiver.
- Connect the equipment into an outlet on a circuit different from that to which the receiver is connected.
- Consult the dealer or an experienced radio/TV technician for help.

This device complies with part 15 of the FCC Rules. Operation is subject to the following two conditions:

(1) This device may not cause harmful interference, and (2) this device must accept any interference received, including interference that may cause undesired operation.

Changes or modifications not expressly approved by the party responsible for compliance could void the user's authority to operate the equipment.