



After service

Email:
MiniPC:Support-pc@bee-link.com
TV BOX:Support-box@bee-link.com
Sales : Wholesale@bee-link.com

Call us! +86-755-36633117/36633118



SEI

SERIES MINIPC



User Manual

WARNING

- **INGESTION HAZARD:** This product contains a button cell or coin battery.
- **DEATH** or serious injury can occur if ingested.
- A swallowed button cell or coin battery can cause **Internal Chemical Burns** in as little as 2 hours.
- **KEEP** new and used batteries **OUT OF REACH of CHILDREN**
- **Seek immediate medical attention** if a battery is suspected to be swallowed or inserted inside any part of the body.

- ⚠**
- Remove and immediately recycle or dispose of used batteries according to local regulations and keep away from children. Do NOT dispose of batteries in household trash or incinerate.
 - Even used batteries may cause severe injury or death.
 - Call a local poison control center for treatment information.
 - The compatible battery type (e.g., LR44, CR2032).
 - The nominal battery voltage
 - Non-rechargeable batteries are not to be recharged.
 - Do not force discharge, recharge, disassemble, heat above or incinerate. Doing so may result in injury due to venting, leakage or explosion resulting in chemical burns.

- ⚠**
- Ensure the batteries are installed correctly according to polarity (+ and -).
 - Do not mix old and new batteries, different brands or types of batteries, such as alkaline, carbon-zinc, or rechargeable batteries.
 - Remove and immediately recycle or dispose of batteries from equipment not used for an extended period of time according to local regulations.
 - Always completely secure the battery compartment. If the battery compartment does not close securely, stop using the product, remove the batteries, and keep them away from children.

Thank you for choosing Beelink.
Please read the user manual carefully, and keep it for future reference.

Connect to a wonderful life

CONTENTS

◇ English Instructions	01-04
◇ Deutsches Benutzerhandbuch	05-08
◇ Instrucciones en español	09-12
◇ Istruzione in italiano	13-16
◇ Instructions en français	17-20
◇ Инструкция на русском языке	21-24
◇ 日本語版取説	25-28



⚠ Before using this product, please read and make sure you understand the instructions ("User Manual"), and other safety guidelines to ensure your safety and prevent unnecessary harm resulting from improper use. Your use of this product will be considered as your acceptance of all the terms related to this product.

【User Manual】

Dear user: Thank you for using this product. To ensure your safety and benefits, please read the instructions carefully before use.

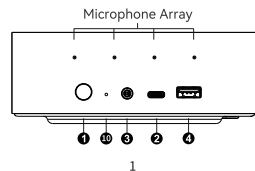
【Disclaimer】

- Be sure to use the product with the original power cord. Beelink shall bear no liability for any issues or failures caused by your use of a third-party DC power cord.
- Users may utilize music, videos, pictures, and software provided by a third party, but Beelink shall not be held responsible for any copyright issues or software failures.
- In case of a product failure, Beelink will strictly adhere to the warranty terms. However, Beelink shall not be liable for any property or economic loss that may arise during use.
- The device is shipped with pre-installed software, which can be used after your proper testing. The uninstallation of the software during compatibility or other issue checks will not impact the quality of the device.
- Beelink reserves the right to improve the products at any time. Specifications or design of the actual products are subject to change without notice.

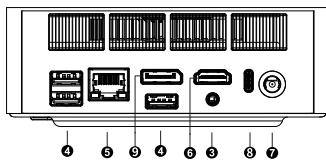
【Product Description】

With an operating system installed, this product can be used for home entertainment and office purposes when connected to the internet. It can be connected to a variety of display devices, such as monitors, TV sets, and projectors.

【Buttons and Ports】



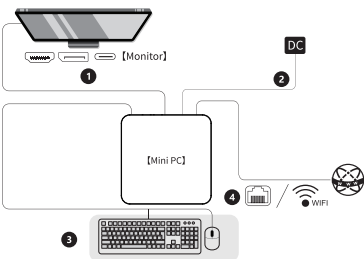
⚠ The four small holes at the top are the sound holes of microphone array. To avoid damaging the microphone and affecting the pickup effect, please do not poke or block them.



- | | | |
|-----------------|------------------|---------------------|
| 1. Power button | 2. Type-C port | 3. 3.5mm audio jack |
| 4. USB port | 5. Ethernet jack | 6. HDMI port |
| 7. DC in port | 8. USB-C port | 9. DP port |
| 10. CLR CMOS | | |

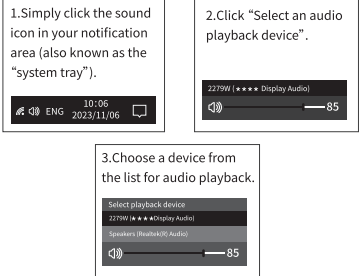
【Quick Setup Guide】

- Connect the device to a monitor using an HDMI cable, a DisplayPort cable, or a USB-C cable.
- Connect the device to a power socket with the provided DC power cord and boot it up.
- Connect a keyboard and mouse to the device through the USB ports or via Bluetooth (Mice or keyboards are not included in the retail package).
- Use an Ethernet cable or Wi-Fi to connect the device to the internet. Note: You need to configure the Wi-Fi settings on the device for wireless network connection.



【How to Switch the Audio Playback Device in Windows】

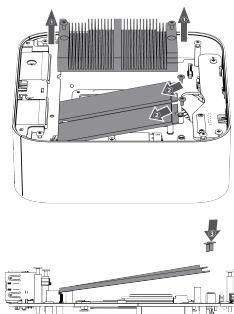
If your Windows Mini PC is connected to multiple audio playback devices (e.g. speakers, headphones, webcams with built-in microphones, and Bluetooth headsets) simultaneously, you will need to choose one of them for audio playback.



【SSD Installation】

Note: The following installation operations should be performed when the power is disconnected (as illustrated in the picture).

- Remove the SSD heatsink.
- Align the plug of the SSD and that of the M.2 slot on the motherboard.
- Gently push the SSD in and use the screw to fix it in place.



【Precautions for Use】

In order to continuously improve the user experience, Beelink may occasionally update applications and firmware.

- Do not use strong chemical solvents to clean the product, and we recommend you wipe it with a soft cloth.
- Please keep this product away from fire.
- Please do not try to open the case or perform repairs yourself. If a failure occurs, please contact Beelink's customer service.
- When cleaning the electronic product, please keep it dry and be cautious of electric shocks.
- Please check whether any cables or plugs are worn or damaged.
- Do not dispose of the product carelessly. Be mindful to protect the environment.
- Working environment temperature: -10°C-45°C; humidity: 30%-85%.
- Storage environment temperature: -20°C-60°C; humidity: 10%-90%.

【Waste Recycling Instruction】

Users intending to dispose of a Beelink product are recommended to comply with local laws and regulations on waste electrical and electronic equipment recycling. Please send the product to a local organization certified by the government for recycling.



The terms "HDMI" and "HDMI High-Definition Multimedia Interface", the HDMI trade dress, and the HDMI logo are all trademarks or registered trademarks of HDMI Licensing Administrator, Inc.

FCC Statement

This equipment has been tested and found to comply with the limits fofo a Class B digital device, pursuant to part 15 of the FCC Rules. These limits are designed to provide reasonable protection against harmful interference in a residential installation. This equipment generates, uses and can radiate radio frequency energy and, if not installed and used in accordance with the instructions, may cause harmful interference to radio communications. However, there is no guarantee that interference will not occur in a particular installation. If this equipment does cause harmful interference to radio or television reception, which can be determined by turning the equipment off and on, the user is encouraged to try to correct the interference by one or more of the following measures:

- Reorient or relocate the receiving antenna.
- Increase the separation between the equipment and receiver.
- Connect the equipment into an outlet on a circuit different from that to which the receiver is connected.
- Consult the dealer or an experienced radio/ TV technician for help.

ThThis device complies with part 15 of the FCC Rules. Operation is subject to the following two conditions: (1) This device may not cause harmful interference, and (2) this device must accept any interference received, including interference that may cause undesired operation.

Caution

Any changes or modifications not expressly approved by the party responsible for compliance could void the user's authority to operate the equipment.

FCC Radiation Exposure Statement

This equipment must be installed and operated in accordance with provided instructions and the antenna(s) used for this transmitter must be installed to provide a separation distance of at least 20 cm from all persons and must not be co-located or operating in conjunction with any other antenna or transmitter. End-users and installers must be provide with antenna installation instructions and transmitter operating conditions for satisfying RF exposure