

Alarm

Wireless Home Security

User's Manual



Contents

Introduction	1
Before you start	3
1. Quick Setup Guide	4
2. Connect your alarm system to smartphone	7
3. Learn to use Alarm System	9
4. Voice Control work with Alexa, and Google Home	14
5. How to use SET button of the Base Station	17
6. How to add additional Sensors and Key Fob	20
7. Troubleshooting.....	26

Say hello to Alarm.

Alarm Base Station



The central hub of your Alarm system.
Connects all of your Alarm devices to the
Smart Life app, so you'll always stay in
control of your home, wherever you are.

Connects to power with the included power
supply.

Contact Sensor

Alerts you when a door or window is opened.

Uses the Sensor magnet and mounting hardware included with the Contact Sensor Install Kit.



Key Fob

Gives you hands-on control of your Alarm system.

Press the buttons to set the Alarm in 3 different Security Modes.

PIR Motion Sensor

Alerts you when someone is passing by.

With 120° wide detection angle and up to 10m detection distance, protecting family safety



BEFORE YOU START

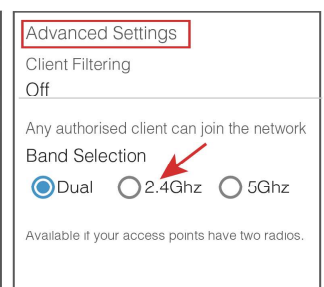
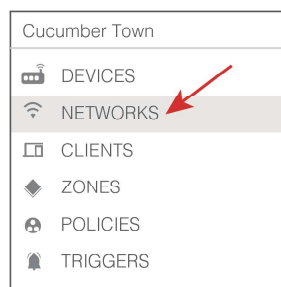
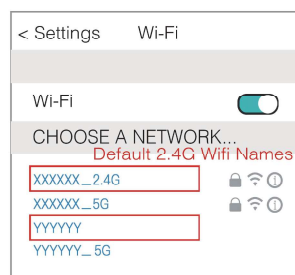


Wi-Fi Signal

The Alarm system is **ONLY** worked with a 2.4 GHz Wi-Fi signal, NOT a 5 GHz Wi-Fi signal.

For 2.4 GHz Wi-Fi You'll need to know:

1. If you only have 5 GHz Wi-Fi router, you will **NOT** be able to complete the connection.
2. If you are using a dual Wi-Fi router and it broadcast 2 Wi-Fi signals, make sure that your phone was connected with the 2.4 GHz Wi-Fi signal, it should be the Wi-Fi signal that next to "_5G".
3. If you are using a dual Wi-Fi router but it broadcast only 1 Wi-Fi signal, you will have to manage your Wi-Fi router and change the settings to have 2.4 GHz Wi-Fi.



1. Quick Setup Guide

1) Power up the Base Station

The **Base Station** is the brains and primary siren of your system. It communicates with all of your devices and sends us your alarm signals if you have activated alarm monitoring service.

- Place your **Base Station** in a **central location** in your house. **DO NOT** install it on the floor.
- The base station must always connects to power with the included power supply.
- Rechargeable 8-hour battery backup only as an emergency battery.

2) How to use the Key Fob

Alarm Modes

Your Alarm system has three Security Modes to choose from: **Disarmed**, **Away**, and **Home**. You can switch between them using the Key Fob.

Disarmed Modes

No Sensors inside your home are armed. This is useful when you're at home and want the freedom to go in and out easily.

Away Modes

When you arm in Away Mode, by default all Sensors are armed. This Mode should be used when you go out and there's no one at home.

Home Modes

When you arm in Home Mode, only door and window Sensors are armed by default. This Mode should be used when someone wants to stay home and feel safe.



SOS button

Alarm features a SOS Alarm just in case an emergency occurs while you're at home. To trigger it, press the lightning button on the Key Fob.

3) Contact Sensor Installation

Test and Install the Contact Sensor

1. Remove the battery activation strip.
2. **Test the alignment before you adhere each piece.**
(The **convex triangular sides** of the sensor and magnet need to face each other.)
The blue light should flash once when you separating the sensor and magnet.
3. Set your Alarm System to "Away Mode", the base station should sound sirens when you separating the sensor and magnet.
4. Adhere the sensor on the door and the magnet on the doorframe, or the other way around.

2. Connect your alarm system to smartphone

1. Set up your Smart Life account

1) First, download the Smart Life app for your iOS or Android device.

- Before setting up your Alarm, make sure you have the latest version of the Smart Life app from the app store.



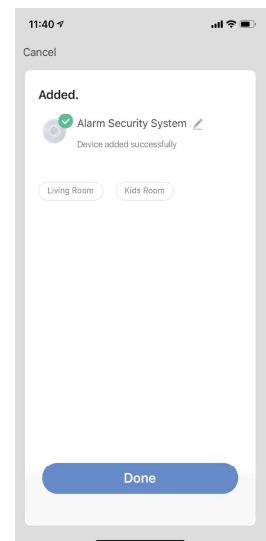
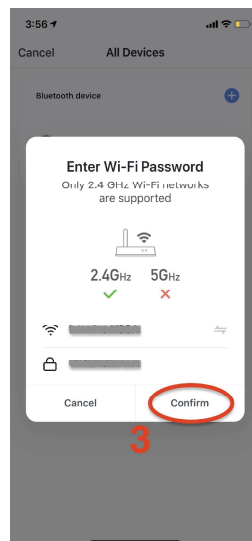
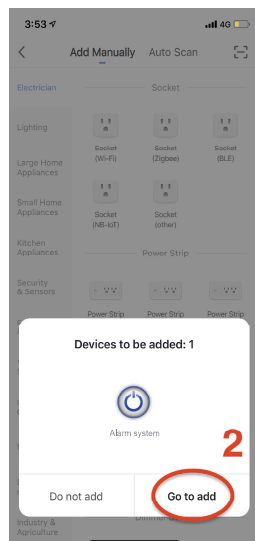
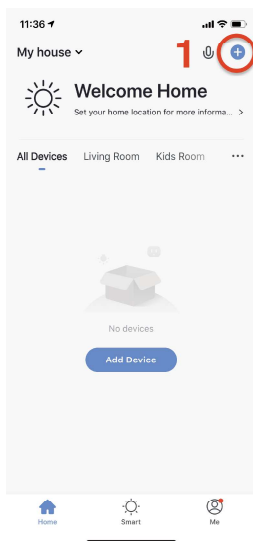
2) Next, create your account.

- If you're new to Smart Life, tap **Sign up** to create account. Enter your mobile phone or email address, then tap **Get Verification Code**, enter the code you receive in your mobile phone or email to set up the password.
- If you already have a Smart Life account used for other devices, tap **Log in with Existing Account**.

2. Connect the Alarm Base Station to Smart Life app

IMPORTANT: Make sure your smartphone is connected to your home 2.4Ghz Wi-Fi signal before the following setup. Turn on your smartphone's **Bluetooth**.

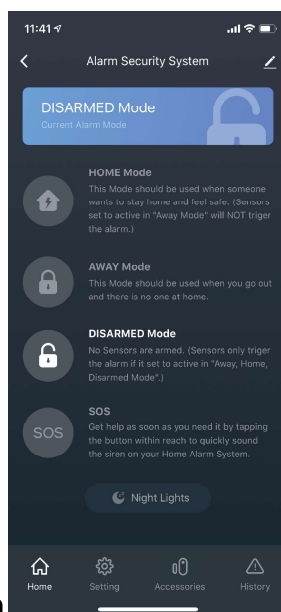
1. Launch the app and tap the Plus (+) in the top right corner to add a device.
2. Tap **Go to add**.
3. Enter your home Wi-Fi name and password, then tap **Confirm**.
4. Now your Base Station is successfully added to Smart Life app. Tab **Done**.



3. Learn to use Alarm System

Alarm Modes

Your Alarm system has three Security Modes to choose from: **Disarmed**, **Away**, and **Home**. You can switch between them using the Key Fob and the Smart Life app.



Away Modes

When you arm in Away Mode, by default all Sensors are armed. This Mode should be used when you go out and there's no one at home.



Home Modes

When you arm in Home Mode, only door and window Sensors are armed by default. This Mode should be used when someone wants to stay home and feel safe.



Disarmed Modes

No Sensors inside your home are armed. This is useful when you're at home and want the freedom to go in and out easily.

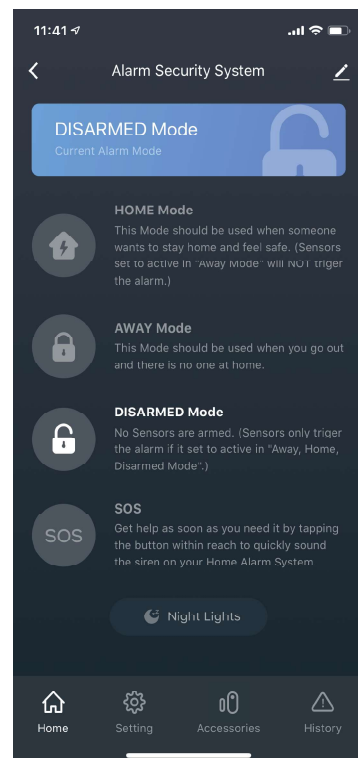
How to Arm and Disarm your Alarm

Using the **Key Fob**, simply press the Disarmed, Away, or Home Mode button.

Using the **Smart Life app**, simply tap the Mode of your choice.

- **Disarming will cancel your alarm signal.**

If you're professionally monitored, disarming the system during an alarm cancels the alarm signal sent to the monitoring center. In an emergency, allow the alarm to continue without disarming until you're sure response is not needed.



* Security Mode of Sensors

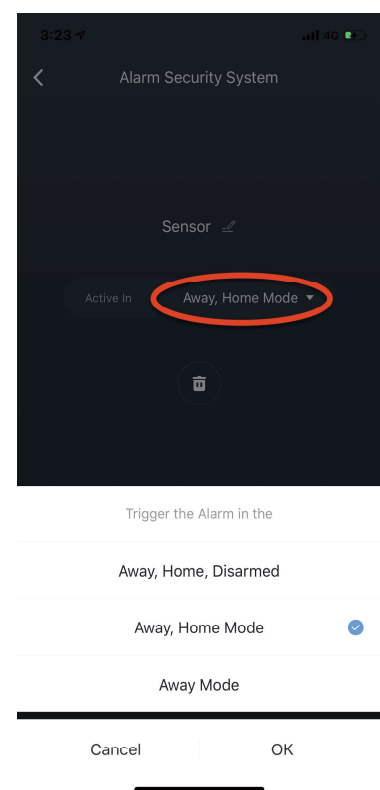
Choosing which Sensors are monitored in each mode.

Each Security Mode monitors specific groups of Sensors.

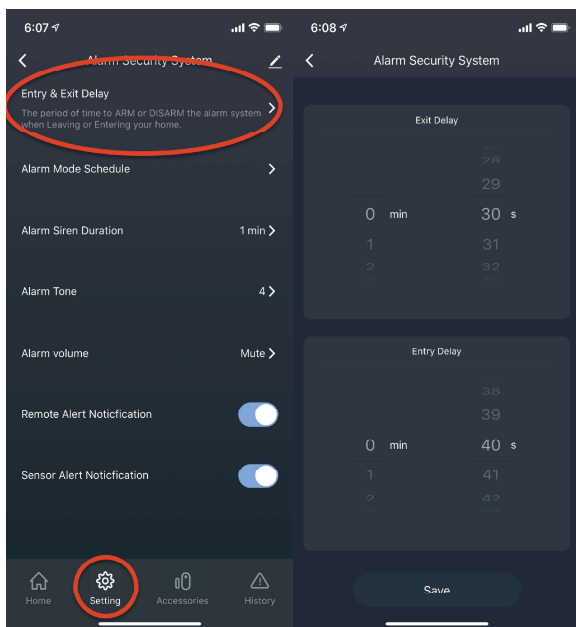
By default, **Away Mode** and **Home Mode** arms only Contact Sensors used on doors and windows.

You can customize which Sensors are armed in **Away Mode**. For example, if you want to avoid arming a specific door while in Home Mode, you can adjust this using Mode Settings (choose trigger the Alarm in the **Away Mode**).

****Sensors set to **Away, Home, Disarmed Mode** will trigger the alarm even your alarm system is set to **Disarmed mode**.**



Understanding Entry & Exit Delay



Exit Delay gives you a short period of time to leave your home once you've armed the Alarm. You'll hear a beeping sound to remind you that there is only a few seconds to exit your home and close the door. When your Exit Delay ends, your Alarm is in Armed Mode.

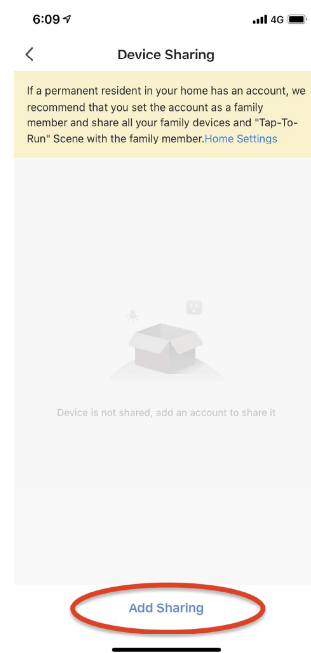
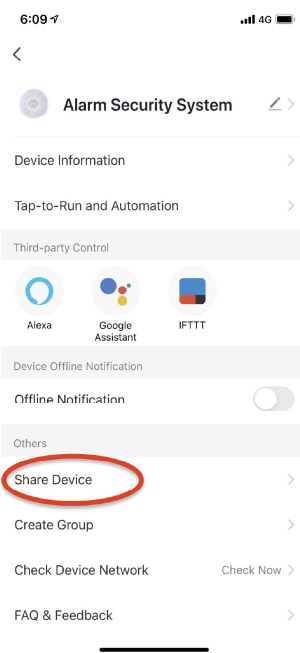
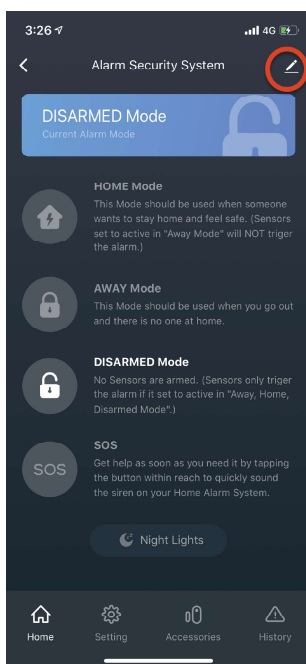
Entry Delay gives you a short time to disarm your Alarm when entering your home. Opening your door will trigger the Entry Delay to begin counting down. You'll hear beeping sound during the delay, and when the delay ends, if you don't disarm, your Alarm siren will sound.

* Customize each delay for any time between 0 seconds (no delay) and 540 seconds (9 minutes). Just make sure you have enough time to arm and disarm your Alarm.

Adding Shared Family Users

Tap **pen icon**, tap **Share Device**, then tap **Add Sharing** to enter sharing user's Smart Life account name.

(Sharing users should sign up for a Smart Life account in advance.)

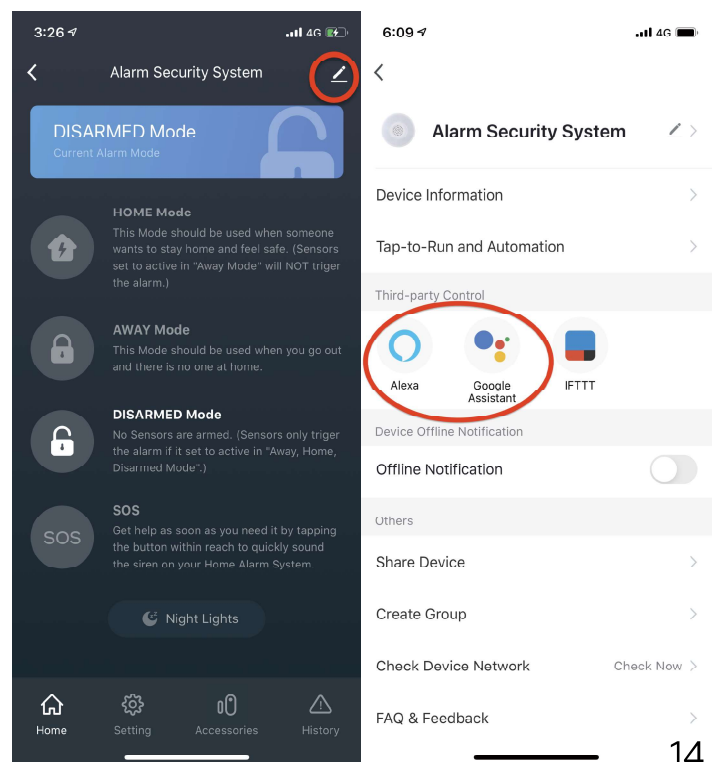


4. Work with Alexa, and Google Home

Voice Control

Connect Alarm System to select Alexa, or Google Home devices to easily set your Alarm in **Home, Away, and Disarmed Modes** and check the status of your security system with hands-free voice control.

- Tap **pen icon**, then tap **Alexa** or **Google Assistant icon** to connect.



Alexa Voice Commands

You can start controlling the Smart Alarm System with amazon Alexa using voice command. Such as:

- **"Alexa, arm {Alarm Security System} in away mode"**
- **"Alexa, arm {Alarm Security System} in home mode"**
- **"Alexa, disarm {Alarm Security System} "**
- **"Alexa, what's your voice code for my {Alarm Security System} ; Voice code 1234"**
- **"Alarmed" or "Disarmed"**

** {Alarm Security System} is the default name of your alarm system.*

Google Home Voice Commands

You can start controlling the Smart Alarm System with Google Home device using voice command. Such as:

- **" Set the {Alarm Security System} to away mode."**
- **" Set the {Alarm Security System} to home mode."**
- **"Disarm {Alarm Security System} "**

** {Alarm Security System} is the default name of your alarm system.*

5. How to use SET button of the Base Station

1. How to use SET button for Pairing alarm accessories

1. Learning sensor: long press for 3 seconds (one beep) and release the button. The red and white flashes alternately to enter the learning sensor state. After pairing to the device, the white light flashes.

2. Trigger the sensor to send a code, and **the host learns successfully**: the white light flashes and a beep sounds

Host learning failure: two beeps

Exit the learning state: press the function key once, the red and white lights are off

2. How to use SET button to setup Wi-Fi Connection

Enter the **Wi-Fi Connection Mode**

Switch the network configuration mode: the default EZ network configuration mode is turned on, and the network configuration light (white light) flashes quickly. Press and hold the network configuration button for 8 seconds (one beep), the network configuration light (white light) flashes slowly, and the AP hotspot network configuration mode is entered.

3. How to use SET button to RESET the base station

RESET the base station

1. Turn **OFF** the base station.
2. Press and hold the **SET** button, and turn **ON** the base station while pressing the SET button.
3. You will hear 2 beeping sounds. Now the Base Station has been **RESET**.

* This RESET procedure includes deleting all sensors and remote controls from the Base Station, and clear the Wi-Fi setting.

6. How to add additional Sensors and Key Fob Devices though the Smart Life APP

Setting up your Alarm security devices involves two steps:



Connect

the device to your
Alarm System.



Configure

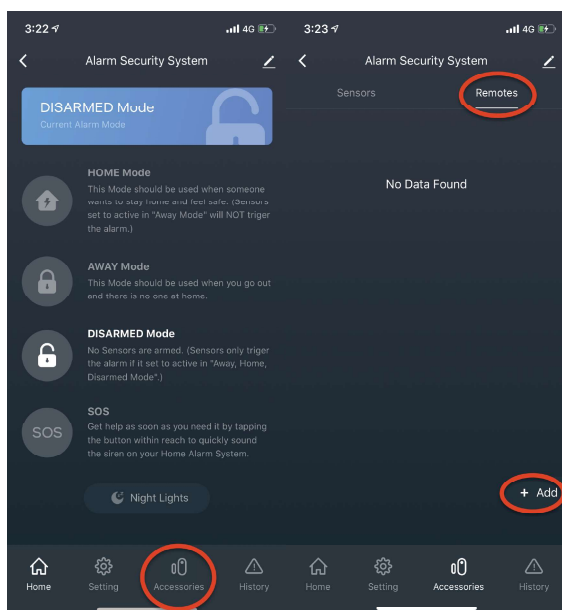
any unique settings
as needed.

For the easiest setup, complete two steps for each device before moving on to the next one. Using the app and this guide, we'll help you position your Alarm to improve the security of your home.

Key Fob

1. Connect

To connect a Key Fob, tap **Accessories** at the bottom to set up the key fob.



Tap **Remotes**, then **tap + Add**, then there will be followed by a beeping sound from the Base Station.

Now you need to press one of the key fob button.

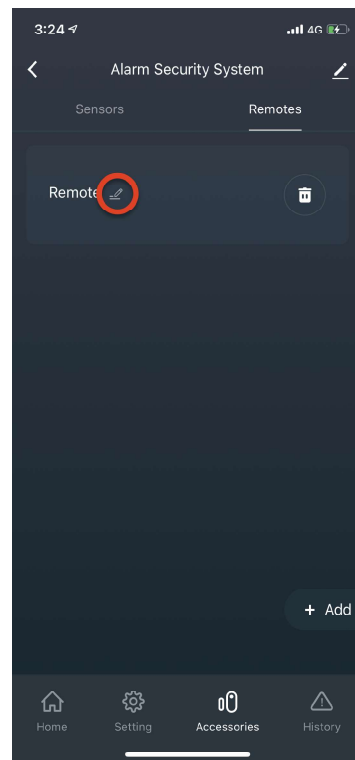


Key Fob

2. Configure

Using the app, choose the key fob, give it a unique name describing the key fob.

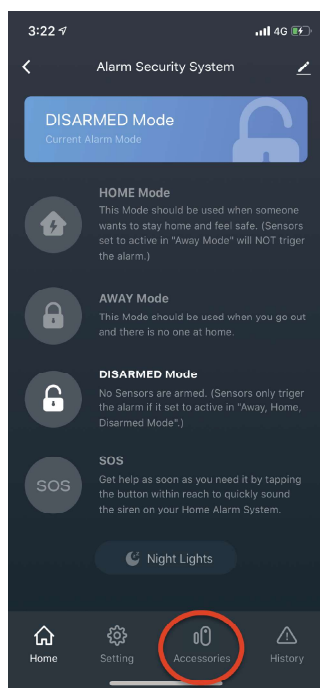
Tap **Remotes**, then tap **pen icon** to edit the device name.



Contact Sensor, Motion Sensor, & Door Bell

1. Connect

To connect a Contact Sensor, Motion Sensor or Door Bell, tap **Accessories** at the bottom to set up the sensor device.



a) Contact Sensor

Line up the Contact Sensor (sensor and magnet) together (Fig.1).

Tap **Sensors**, then tap **+ Add**, then there will be followed by a beeping sound from the Base Station. Now you need to separate the Contact Sensor (Fig.2).

b) Motion Sensor

Turn on the **Motion Sensor** (ON/OFF button on the back).

Tap **Sensors**, then tap **+ Add**, then there will be followed by a beeping sound from the Base Station. Now you need to wave your hand in front of the Motion Sensor.

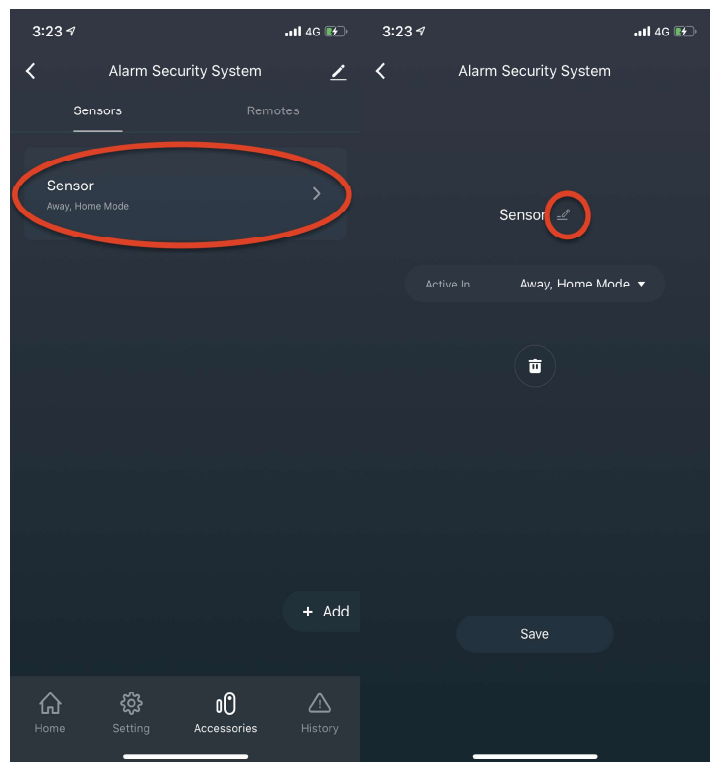
c) Door Bell

Tap **Sensors**, then tap **+ Add**, then there will be followed by a beeping sound from the Base Station. Now press the Doorbell button.

2. Configure

Using the app, choose the Sensor placement (Door, Window or any name), give it a unique name describing the location, and assign it to a room.

Tap **Sensor**, then tap **pen icon** to edit the device name.



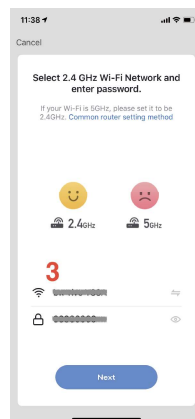
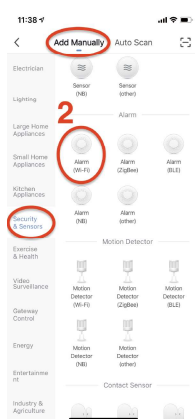
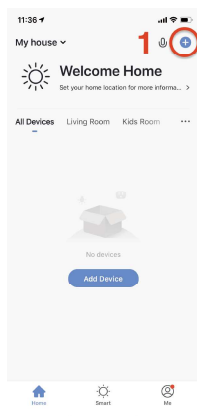
Troubleshooting

Connect your alarm system to smartphone (AP mode)

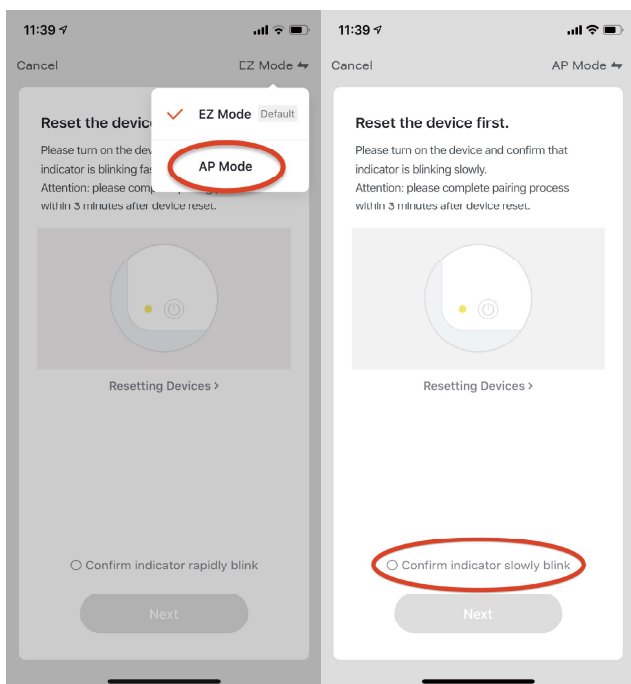
IMPORTANT: Skip this step if you have successfully connected to smartphone.

Make sure your smartphone is connected to your home 2.4Ghz Wi-Fi signal before the following setup.

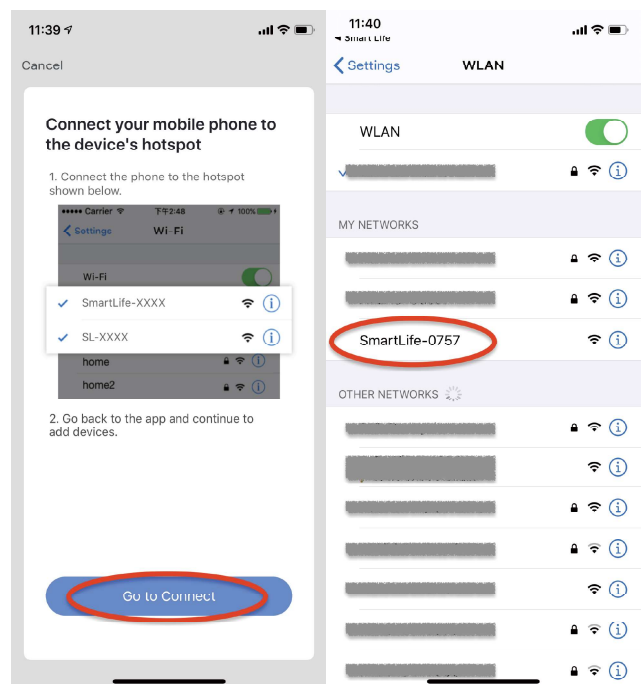
1. Launch the app and tap the Plus (+) in the top right corner to add a device.
2. Select **Add Manually**, then **Security & Sensors**, then **Alarm (Wi-Fi)**.
3. Choose your Wi-Fi network and Enter the password. Then tab **Next**.
4. Press and hold the **SET** button for **8** seconds, release the SET button when you hear **2 beeping sounds** and the RED light of base station is slowly blinking (2s/time).



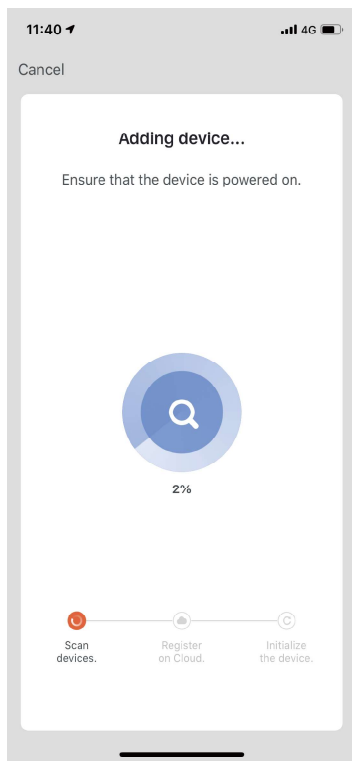
5. Choose **AP Mode** and Select **Confirm indicator slowly blink**.



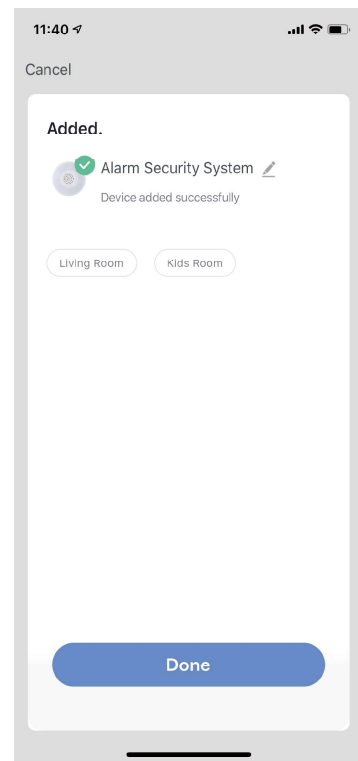
6. Tap **Go to Connect**, select **WLAN** on your smartphone setting, choose **SmartLife-XXXX** network on the WLAN setting.



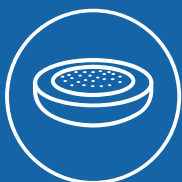
7. After successfully connected to **SmartLife-XXXX**, switch back to **Smart Life app**, it will show **Adding device** on the Smart Life App.



8. Now your **Base Station** is successfully added to Smart Life app. Tab **Done**.



Customize your safer home.



Base Station



Contact Sensors



Pir Motion Sensor



Doorbell



Remote Control



Linkage

Federal Communications Commission Notice

This device complies with part 15 of the FCC Rules. Operation is subject to the following two conditions: (1) This device may not cause harmful interference, and (2) this device must accept any interference received, including interference that may cause undesired operation.

Any Changes or modifications not expressly approved by the party responsible for compliance could void the user's authority to operate the equipment.

Note: This equipment has been tested and found to comply with the limits for a Class B digital device, pursuant to part 15 of the FCC Rules. These limits are designed to provide reasonable protection against harmful interference in a residential installation. This equipment generates uses and can radiate radio frequency energy and, if not installed and used in accordance with the instructions, may cause harmful interference to radio communications. However, there is no guarantee that interference will not occur in a particular installation. If this equipment does cause harmful interference to radio or television reception, which can be determined by turning the equipment off and on, the user is encouraged to try to correct the interference by one or more of the following measures:

- Reorient or relocate the receiving antenna.
- Increase the separation between the equipment and receiver.
- Connect the equipment into an outlet on a circuit different from that to which the receiver is connected.
- Consult the dealer or an experienced radio/TV technician for help.

This equipment complies with FCC radiation exposure limits set forth for an uncontrolled environment. This equipment should be installed and operated with minimum distance 20cm between the radiator & your body.