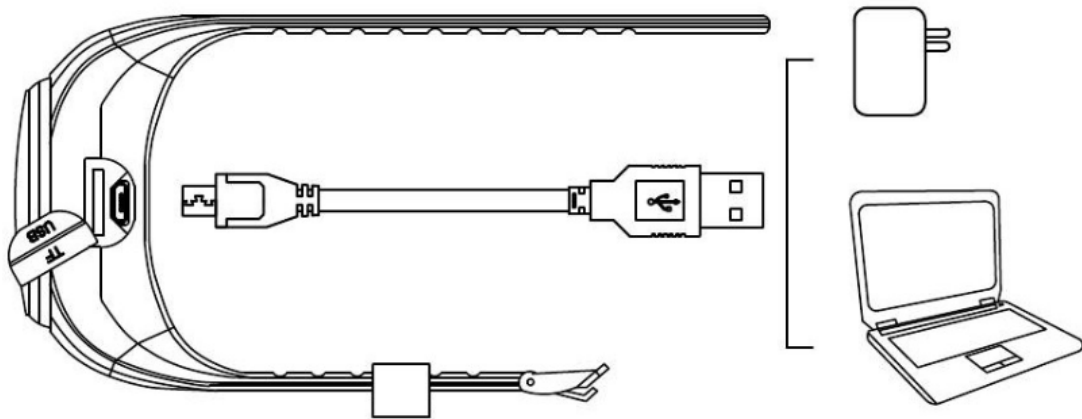


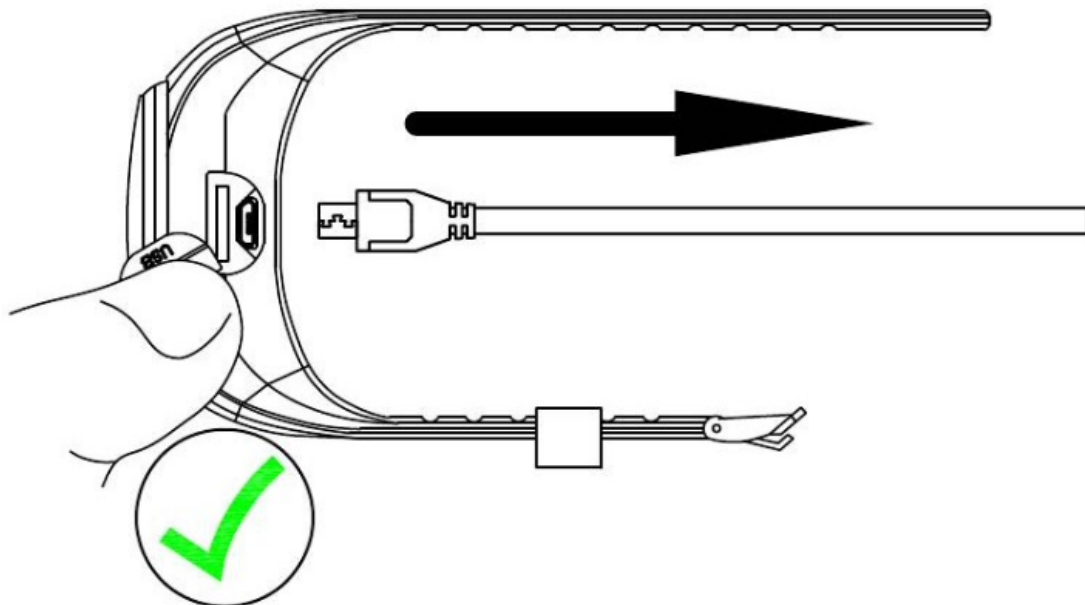
# **X10 Wirless Speaker Watch User Manual**

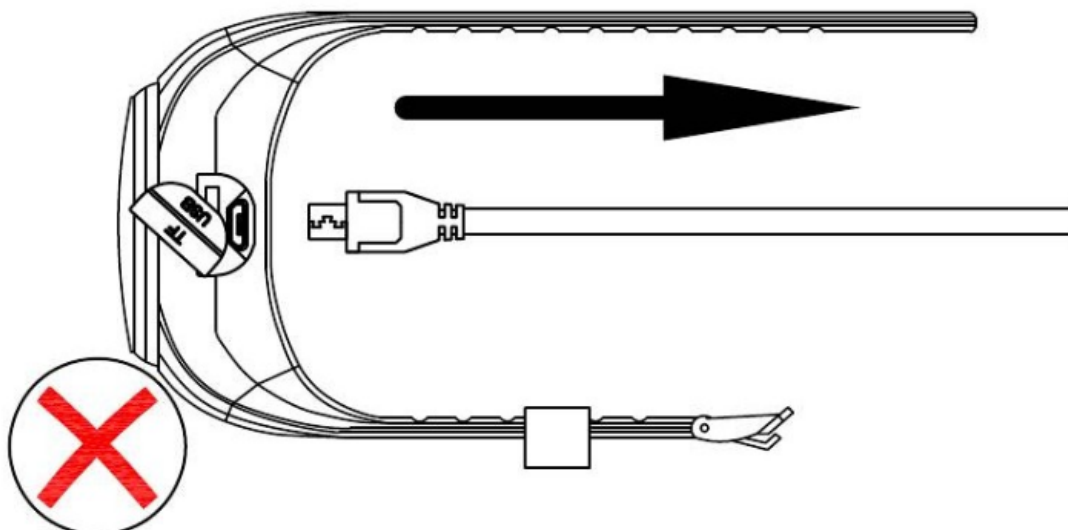
## Notes Before Use

1, Before you start using the music watch, please open the USB cover and plug in to the computer or wall charger(not include) through the included micro USB cable to charge this watch fully first. Please plug the cable connector into the port fully to ensure good contact. Red LED lights while charging, red LED goes off when fully charged. The charge time is almost 2 hours.

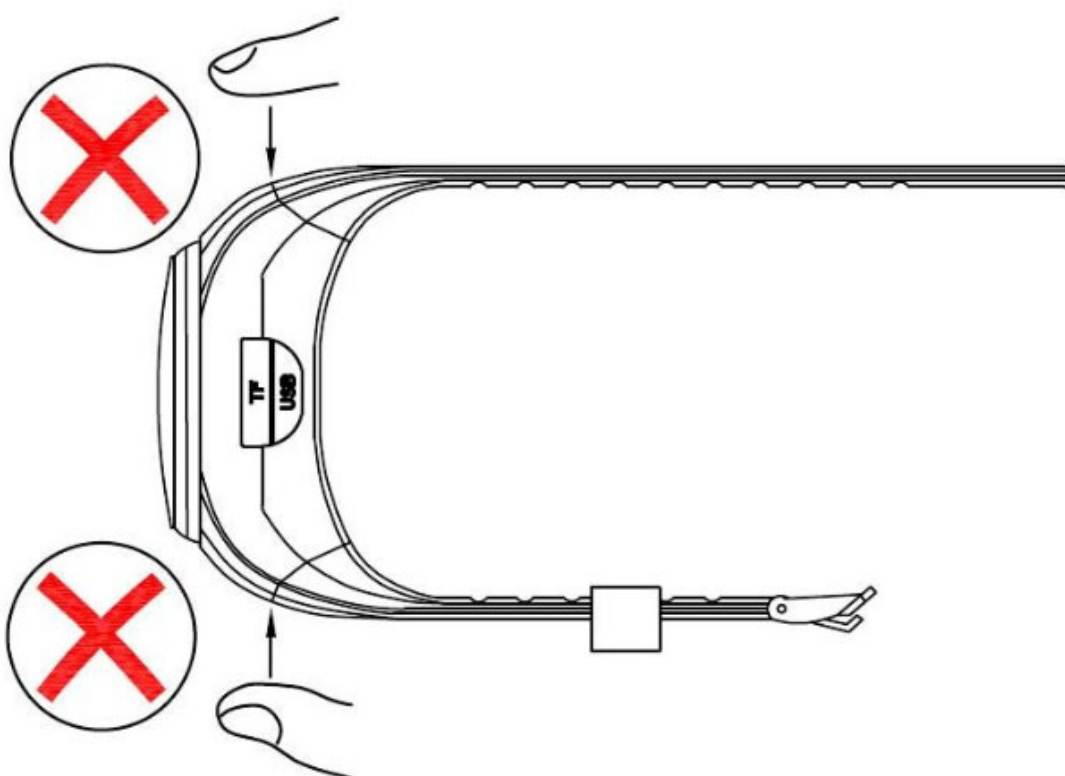


2, Please press the USB silicone cover with your finger when plugging out the cable from the watch, to protect the USB cover from being pulled out together. If it is pulled out accidentally, please screw out screws to install it.





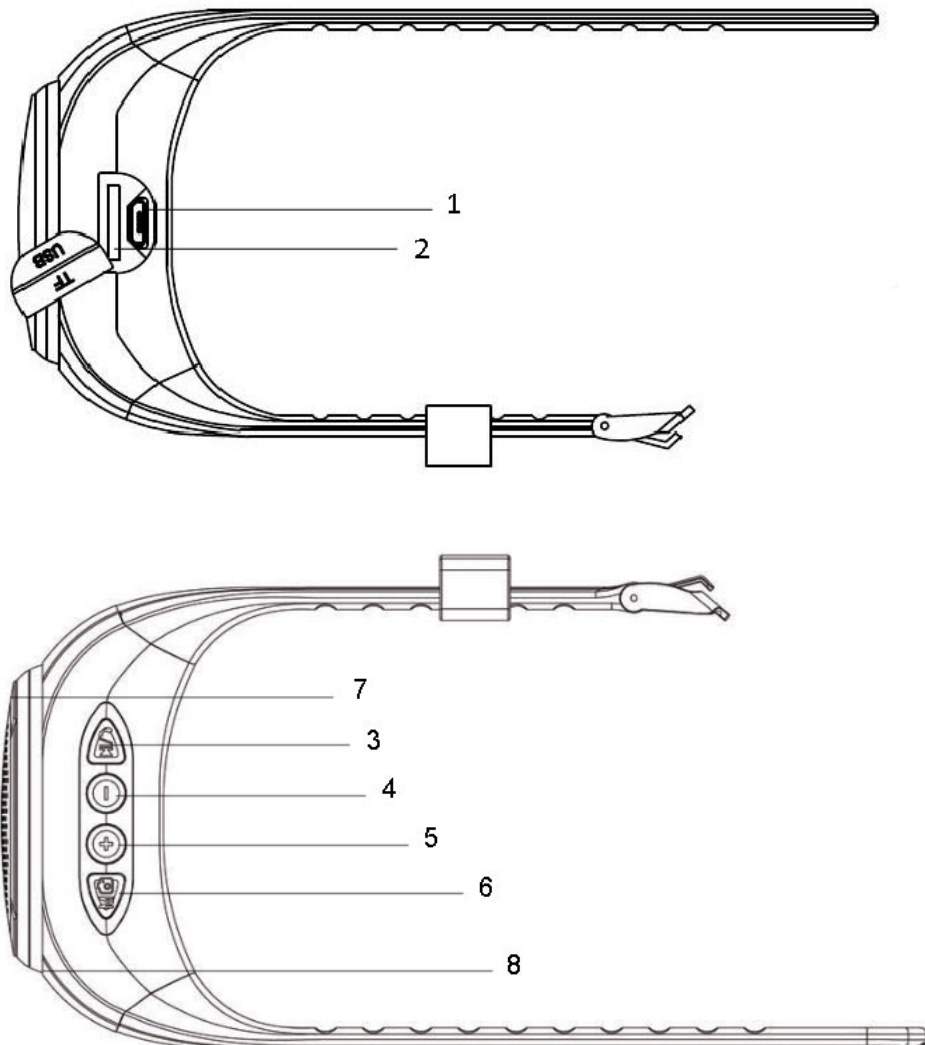
3, Please don't apply strong pressure to the connection part from the watch strap to the case.



4, This watch is IP45 waterproof, splash proof and rainproof, perfect for sports, beach, poolside, garden, shower, car, boat & golf cart etc.

Note: IP45 rating waterproof speaker can resist gentle water spray & splash but cannot be partially or fully submerged into the water.

# Product Overview



- 1 Micro USB charge port (open the cover before charge)
- 2 Micro SD card slot (open the cover before insert card)
- 3 Power ON/OFF (long press)  
Play/Pause (short press)  
Answer/Hang up (short press when phone is coming)
- 4 Volume - / Previous (long press is Volume -, short press is Previous)
- 5 Volume + / Next (long press is Volume +, short press is Next)
- 6 Mode Button  
Bluetooth Mode / Play by TF Card Mode / Selfie Mode (double press to switch)  
Turn ON/OFF LED flashing light (long press)  
Remote Capture (single press after X10 Selfie Mode is connected)
- 7 LED charging status indicator
- 8 Microphone

**Features:**

A great fun way to listen to music and audiobooks on the wrist.

Good for walking your dogs, running, jogging, cycling, hiking and other outdoor or indoor activity.

Wirelessly play music from your mobile devices via Bluetooth or from Micro SD card.

Let music go with you everywhere.

Fit for the aged, adults, big kids.

Switchable LED flashing light enhance the experience.

Connect to computer to be a small PC USB speaker.

Support Bluetooth speaker, TF card play, hands free calls, remote capture

**Specifications:**

- Waterproof: IP45
- Music playtime: 6 - 10 hours at Mid-volume; 4 - 6 hours at Max-volume.
- Charge time: 2 hours
- Audio format: MP3, WAV
- Speaker output: 3W
- Built-in microphone
- Micro USB charge port
- Built-in rechargeable battery: 500mAh
- Charge Input: 5V 500mAh
- Wireless technology: Bluetooth 5.0 + EDR
- Bluetooth distance range: 30 feet
- Support micro SD card up to 32GB

**Package Contents:**

Music Watch x 1

User Manual x 1

Micro USB charge and sync cable x 1

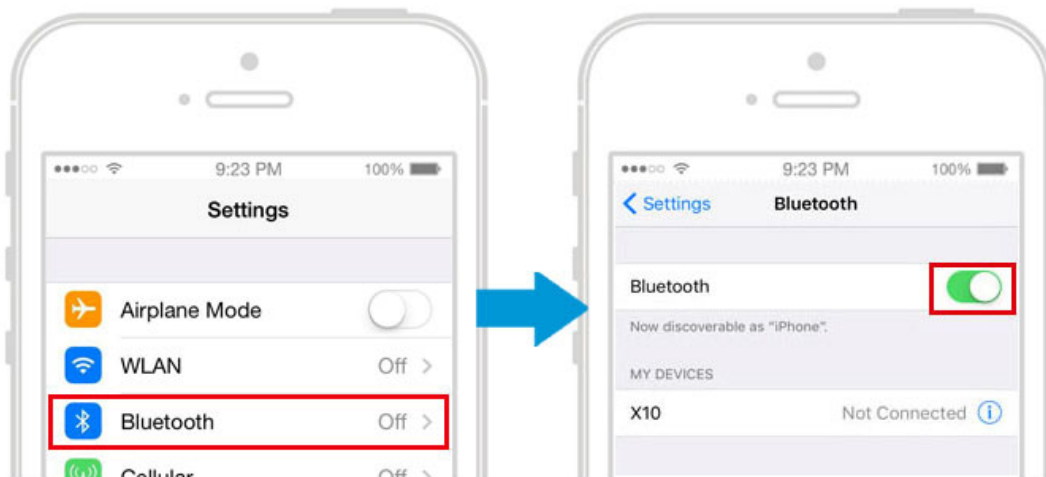
## How To Use

### **1. Wirelessly Play Music / Audiobooks via Bluetooth**

#### **Connection to your Mobile Device**

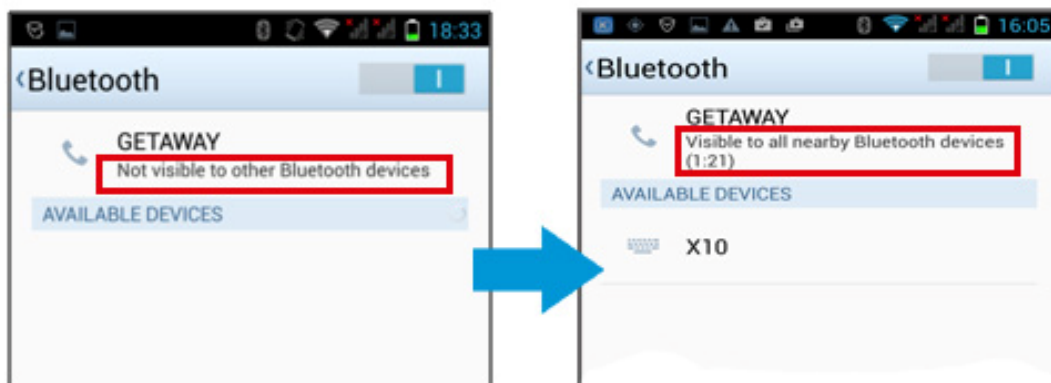
**Note:** For Bluetooth to work, please keep your device stay in Bluetooth distance range of 30 feet. The range can be impacted by environmental conditions i.e. walls, people, clothing, bag, mobile device's Bluetooth antenna signal strength.

1). Activate Bluetooth function from your phone Settings. (Pic.1)



(Pic.1)

Note: Some Android mobile devices may find "Not visible to other Bluetooth devices" or "Only visible to paired devices", please click it and change to be "Visible to all nearby Bluetooth devices" (Pic.2)



(Pic.2)

2). Long press "Power ON/OFF button"  to turn on the speaker watch and then beep tones are heard and it says "Bluetooth Mode".

3). Search for X10 in your Bluetooth list, and click X10 to pair and connect (Pic.3). Beep tones are heard once paired successfully. (Pic.4)

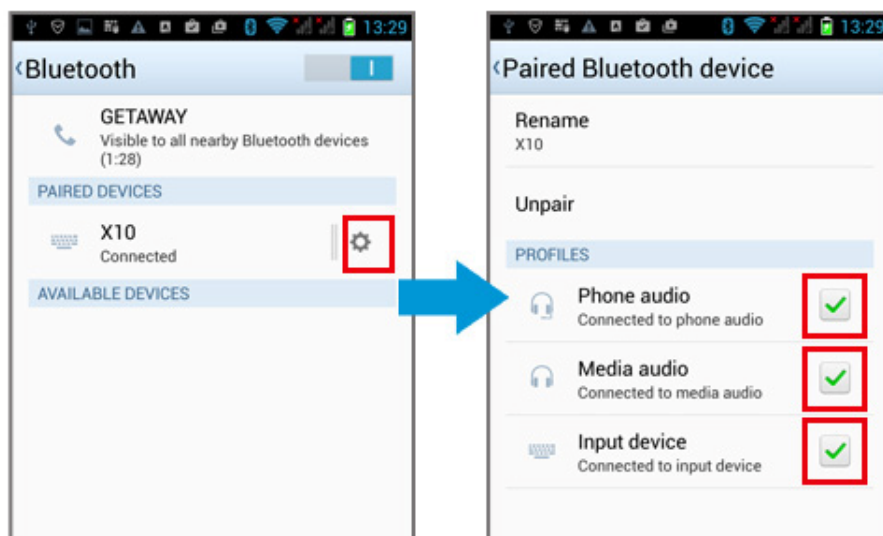


(Pic.3)



(Pic.4)

Note: Some Android mobile devices didn't switch on "Call audio", "Media audio" and "Input device" by default in Bluetooth setting. Please find the connected X10, click the setting button on the right side, and switch on "Phone audio" "Media audio" and "Input device". (Pic.5)



(Pic.5)

4). Open your music player in your phone and ready to enjoy music from this speaker watch.

Open your audiobook APP (e.g. Audible, Audiobooks etc.) in your phone and listen to audio books from this watch. The audio book file format shall be MP3. Single press "+" or "-" button to play forward or backward. This watch cannot play next audio book automatically but manually.

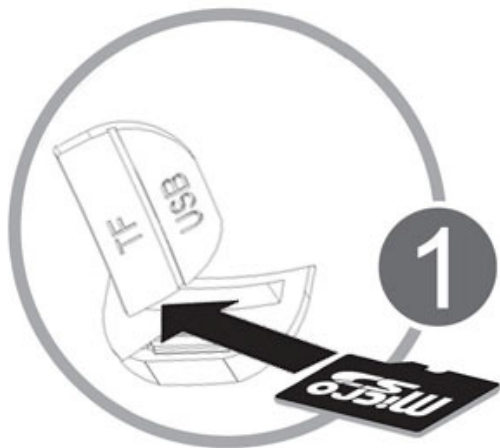
Note: The above are generic steps to pair to a Bluetooth device, for more specific instructions on Bluetooth connectivity for your device, please consult

your phone manufacturer's manual.

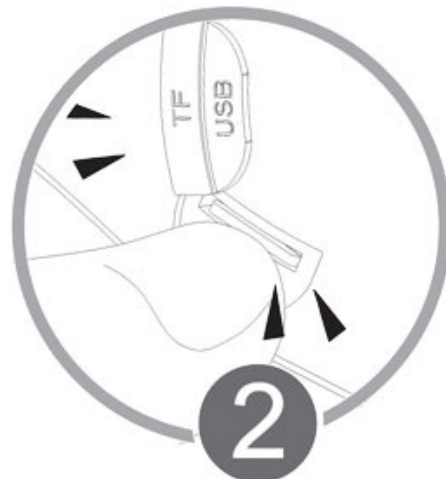
## 2. Play Music from Micro SD Memory Card / TF Card

1). Transfer music files with MP3 format to the Micro SD card.

a). Open the USB cover of the speaker watch. Please push Micro SD card into the slot until it locks into place (Pic.6) (Pic.7). Note: the gold contacts face downward. If it is not easy for your finger to push the card into the slot, please use a paperclip or a tiny tool to help push until the card locks.

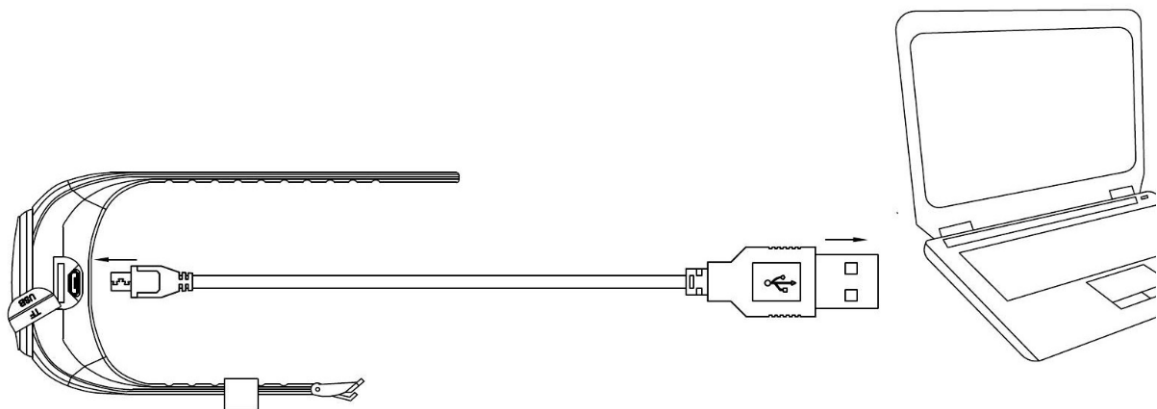


(Pic.6)





(Pic.7)

b). With your laptop turned on, plug the included USB cable into the watch and place the other end into the computer. (Pic.8)



(Pic.8)

c). Long press "Power ON/OFF"  button to turn your music watch on and double press "Mode Button"  to switch the mode to be "PC Mode".

d). Open the "My Computer" window. Your Micro SD card is displayed as a "Removable Disk" icon.




e). Open the "Removable Disk" icon to access the Micro SD card. Create "Music" folder in the Micro SD card.

f). Drag and drop the desired songs to the "Music" folder on the Micro SD card.

**Note: MP3 music file format is the best.**

g). When finished, disconnect by clicking "Safely Remove Hardware" icon in the system tray, then select "Safely Remove USB Mass Storage Device". Pull out the cable from the watch. It says "Bluetooth Mode".

Note: There are more ways to transfer music files to Micro SD card besides the above way downloading from computer. For more specific instructions, please consult your device manufacturer.

2). Double press "Mode Button"  can interchange "Play by TF Card" Mode and "Bluetooth Mode" to play music from TF card or Bluetooth connection from phone.

Note: If want to take the Micro SD card out, just gently press on the Micro SD card to release the lock, then carefully pull it out. If it is not easy for your finger to install or uninstall the card, please use a paperclip or a tiny tool to help.

### 3. IP45 Waterproof


This watch is IP45 waterproof, splash proof and rainproof, perfect for sports, beach, poolside, garden, shower, car, boat & golf cart etc.

Note: IP45 rating waterproof speaker can resist gentle water spray & splash but cannot be partially or fully submerged into the water.

### 4. Play as A Small PC USB Speaker

Note: Please make sure this music watch is not connected to any Bluetooth devices.

1). With your computer turned on, plug the included USB cable into the watch and place the other end into the computer.

2). Long press "Power ON/OFF"  button to turn your music watch on and

double press "Mode Button"  to switch the mode to be "PC Mode".

3). Start to enjoy music, movies and videos with this small PC speaker.


Note: Please make sure to connect to computer first, then turn on your watch.

## 5. Automatic Bluetooth Connection


Check your phone settings and make sure Bluetooth is "on". If it is not the first connection between your phone and music watch, and if it is on select scan for Bluetooth devices and your music watch should pair automatically once power on.

## 6. Hands free Phone Calling



Please make sure this watch is connected to your mobile device via Bluetooth.

Short press "Answer/Hang up"  button to answer or end a phone calling on the wrist. Recommended distance from mouth to the microphone is less than 1.64ft. Swinging arm affects talking quality.

## 7. Turn Off LED flashing lights

Long press "Mode Button"  to turn off LED flashing lights if you don't like.

## 8. Remote Capture

Double press "Mode Button"  to switch the mode to be "Selfie Mode". Search for "X10 selfie mode" in your Bluetooth list, and click "X10 selfie mode" to pair and connect. Beep tones are heard once paired successfully. After "X10 selfie mode" connection, open the camera of your mobile device, then single press "Mode Button"  on the watch to remote taking photos.

### Notes:

- 1, When BT transmitting devices cannot be connected, please delete the rest BT receiving devices name on the list. Re-activate X10, re-searching and re-pairing.
- 2, Hands-free call is only available on BT connected status. The phone call could be interfered with high frequency electromagnetism. People should not try to use this product under high frequency environment.
- 3, The sound performance could also be affected when BT transmitting devices are under poor signal environment, or under low battery capacity.
- 4, This speaker is IP45 waterproof, it can resist gentle water spray & splash but cannot be partially or fully submerged into the water.

This device complies with Part 15 of the FCC Rules. Operation is subject to the following two conditions:

- (1) This device may not cause harmful interference, and
- (2) This device must accept any interference received, including interference that may cause undesired operation.

Warning: Changes or modifications not expressly approved by the party responsible for compliance could void the user's authority to operate the equipment.

NOTE: This equipment has been tested and found to comply with the limits for a Class B digital device, pursuant to Part 15 of the FCC Rules. These limits are designed to provide reasonable protection against harmful interference in a residential installation. This equipment generates uses and can radiate radio frequency energy and, if not installed and used in accordance with the instructions, may cause harmful interference to radio communications. However, there is no guarantee that interference will not occur in a particular installation. If this equipment does cause harmful interference to radio or television reception, which can be determined by turning the equipment off and on, the user is encouraged to try to correct the interference by one or more of the following measures:

- Reorient or relocate the receiving antenna.

- Increase the separation between the equipment and receiver.

- Connect the equipment into an outlet on a circuit different from that to which the receiver is connected.

- Consult the dealer or an experienced radio/TV technician for help.

FCC Radiation Exposure Statement:

The device has been evaluated to meet general RF exposure requirements. The device can be used in portable exposure condition without restriction.