

# User Manual

# Wireless Camera

(T-Series)



Website: [www.jennov.com](http://www.jennov.com)



Email: [support@jennov.com](mailto:support@jennov.com)



US-Direct Line: 0013239021978

Please read this manual instruction carefully before use

---



## Ethernet Cable Connection Way



## Wireless(Hotspot) Connection Way



Please scan above QR code, and watch operation video

## Contents

1. Ethernet Cable Connection Way	P04-P10
2. Wireless(Hotspot) Connection Way	P11-P18
3. CamHipro Interface Instruction	P19-P21
4. Motion Detection Setting	P22-P24
5. SD Card Plan Recording	P25-P27
6. Email Alarm Setting	P28-P34
7 T-Series software settings on computer	P35-P37
8 Camera search tool	P38-P40
9 Playback on mobile phone	P41-P42
10 PC HIP2P client password incorrect	P43
11 Remote view software on PC-HiP2P	P44
12 Playback videos via IE browser	P45
13 Dedicated video player download	P46-P47

## Install Phone APP

You can search "CamHipro" in Android or Apple App store or scan the QR code below to download "CamHipro".

Note: For the security of your device, please change the device password when you watch it for the first time.

(The password must be a mixture of letters and numbers with more than 8 digits. It is not recommended to use special symbols, otherwise the device may not be recognized and cannot be viewed)

Please keep your password properly. If you forget your password, you need to restore the device to factory settings and add it again.

This App is totally free.



Android



iOS



CamHipro

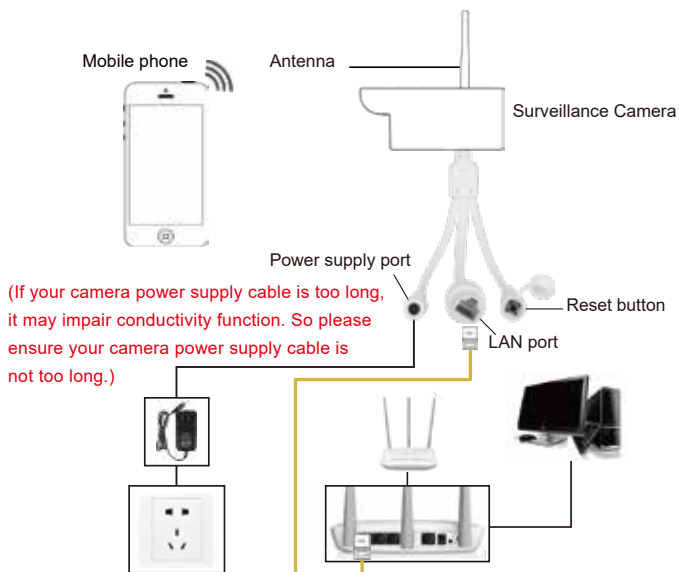


# Ethernet Cable Connection Way Sketches

The following sketches are only for reference. The camera appearance may be different from the camera model you have ordered, but it will not make any difference to the settings. If you choose wireless connection way, please ignore "Ethernet cable connection way" part, and refer to "Wireless connection way" directly.

Ethernet cable connection way: 1. Power on your wifi camera 2. Connect your router and camera by Ethernet cable.

**Note:** When you plug the network cable to camera, you will unable to find the camera hot spot.

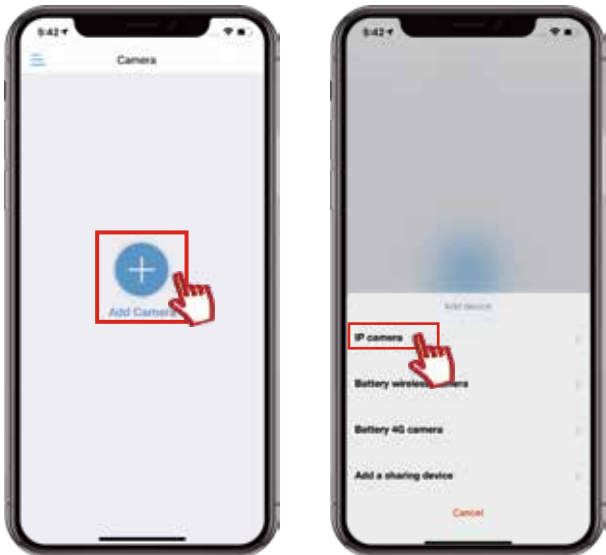


# Ethernet cable connection way 01

Power the wifi camera. Connect your router and camera by Ethernet cable.  
(Please keep your phone and your camera are in the same Internet segment)

1.After installing CamHipro,please open it,and click "Add camera".

2.Choose "IP camera" .



## Ethernet cable connection way 02

Choose "Device in use"

Way 1 to add: input the UID by manual, or scan the UID QR code on the camera.

Way 2 to add: choose "Search nearby devices"(make sure the camera and phone are in same network:LAN)

(If not find the device, please check the connection of camera and router,and make sure the camera has been powered on)





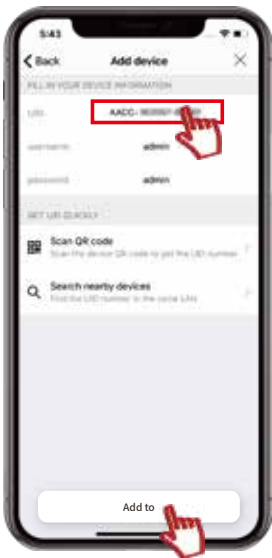
## Ethernet cable connection way 03

Scan the QR code on the Camera to add the camera to App.



## Ethernet cable connection way 04

- 1.After you add the UID,the default user name and default password are both:admin
- 2.Click "Confirm add"--Name the camera--confirm



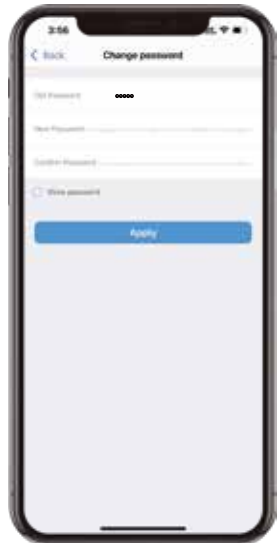
## Set password 05

Note: For the security of your device, please change the device password when you watch it for the first time.

(The password must be a mixture of letters and numbers with more than 8 digits. It is not recommended to use special symbols, otherwise the device may not be recognized and cannot be viewed)

Please keep your password properly. If you forget your password, you need to restore the device to factory settings and add it again.

After the password is changed, the device will automatically reset and wait for about 10 seconds, and the device will automatically connect.



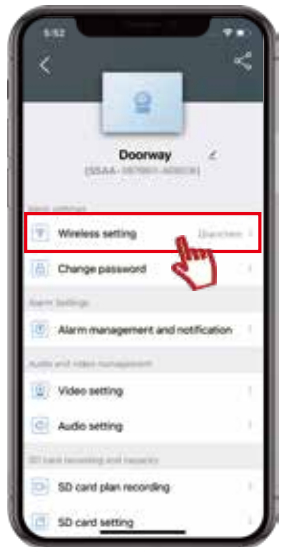
# Ethernet cable connection way 06

Transfer the camera to Wifi connection:

Setting--Wireless Setting--Find your Wifi signal--Input password of your Wifi--Apply

After success, you can unplug the Ethernet cable.

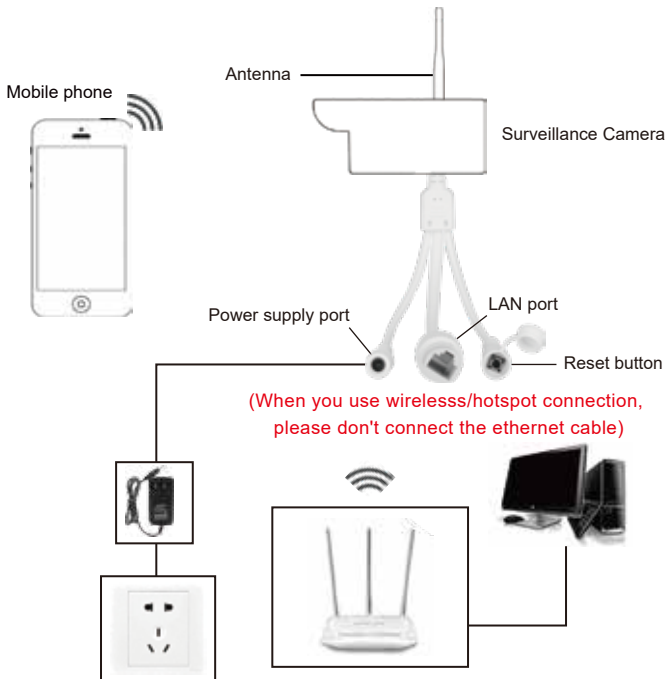
If fails, please reset the camera and do the connection again.



# Wireless(Hotspot) Connection Way Sketches

**\*When you use wireless/hotspot connection, only need plug in(don't connect the ethernet cable).  
(if you connect the Ethernet cable, will not find the hotspot/wifi signal)**

The following sketches are only for reference. The camera appearance may be different from the camera model you have ordered, but it will not make any difference to the settings.



# Wireless(Hotspot) Connection Way 01

Wireless connection way doesn't need Ethernet cable.

In phone "settings" --- "WLAN"

please choose the camera's hotspot,

Named as "IPCAM-XXX",password "01234567".

When connect to camera hotspot successfully,please open the phone APP "CamHipro".

Note:

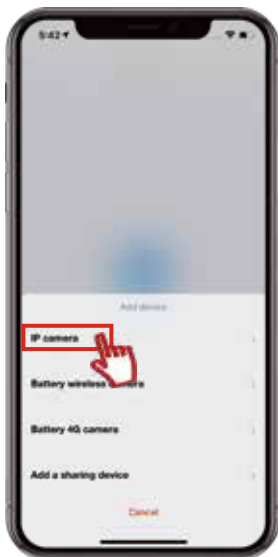
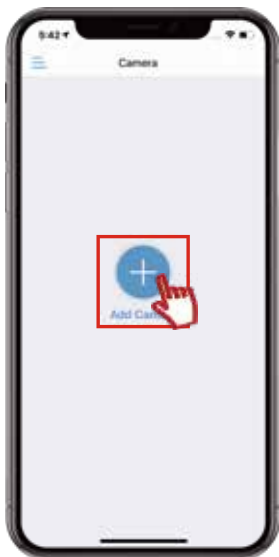
A.If you can't find camera hotspot,please press reset button for around 30 seconds, then try again.

B.Please kindly note if you connect your camera with Ethernet cable,you'll not find the camera hotspot.



## Wireless(Hotspot) Connection Way 02

Run CamHipro App--Click Add device--IP camera.



## Wireless(Hotspot) Connection Way 03

Choose "New device", UID will show up, click to add this camera.

New device: Devices never connected to the network after factory reset

Device in use: Cameras that have been connected to the LAN/Internet.

Scan QR code on the camera, can view the video.





# Wireless(Hotspot) Connection Way 04

After you add the UID,the default user name and default password are both:admin

Click "Add to"

Choose your Wifi and input your wifi password--Configure wireless and add devices



# Wireless (Hotspot) Connection Way 05

Can Name the camera--confirm

Click the camera--View the video

Click the setting gear--Do settings



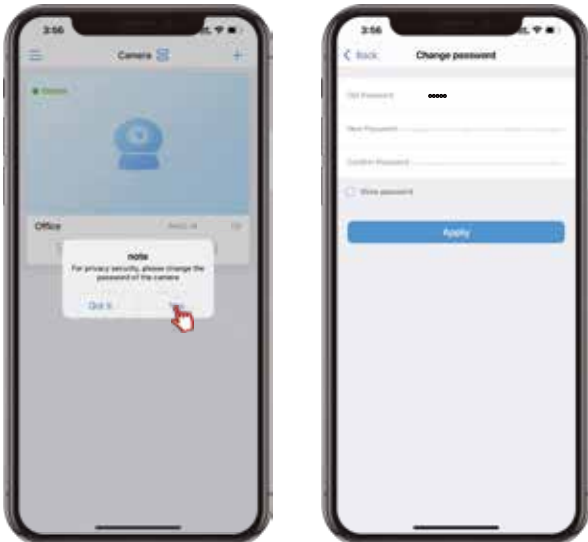
## Set password 06

Note: For the security of your device, please change the device password when you watch it for the first time.

(The password must be a mixture of letters and numbers with more than 8 digits. It is not recommended to use special symbols, otherwise the device may not be recognized and cannot be viewed)

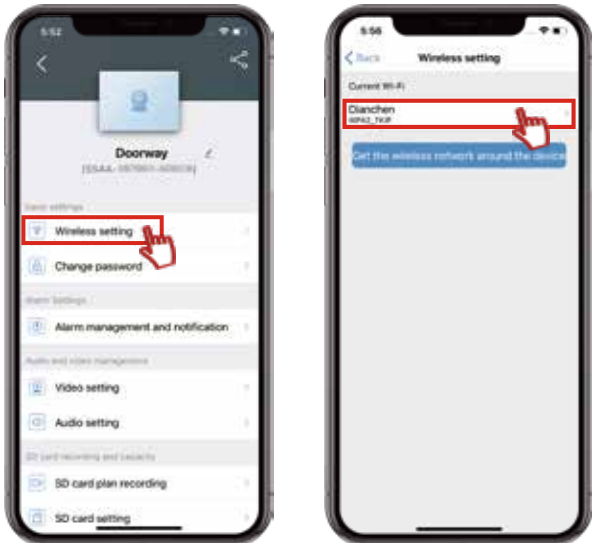
Please keep your password properly. If you forget your password, you need to restore the device to factory settings and add it again.

After the password is changed, the device will automatically reset and wait for about 10 seconds, and the device will automatically connect.



# Wireless (Hotspot) Connection Way 07

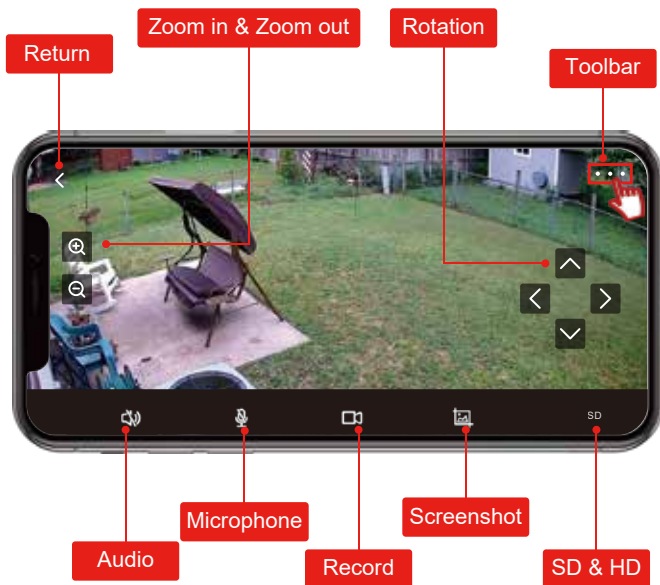
If you forgot to transfer camera hotspot to your home wifi when add it to your app, you can configure home Wifi by following steps:  
Setting--Wireless Setting--Find your Wifi signal--Input password of your Wifi--Apply  
If fails,please reset the camera and do the connection again.



# CamHipro Interface Instruction

## (Full Screen Viewing)

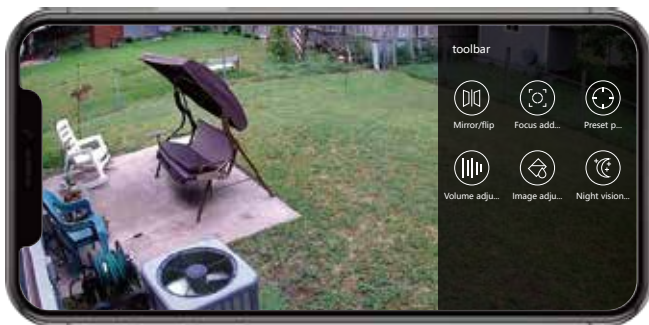
Note: Pan, tilt, zoom, preset, night vision mode and audio function only for some models. If you have question, please contact the seller.



# CamHipro Interface Details Instruction

(Full Screen Viewing)

- 1.Return:return to last interface
- 2.PTZ: Zoom in & Zoom out
- 3.Rotation: up,down,left,right
- 4.Toolbar:Mirror/flip,Focus,Preset,Volume,night vision
- 5.Audio:live audio monitoring
- 6.Microphone:speak through the camera
- 7.Record:start to record video on phone
- 8.Screenshot:save picture on phone
- 9.SD & HD: SD-Stardard Definition;HD-High Definition



# CamHipro Interface Details Instruction

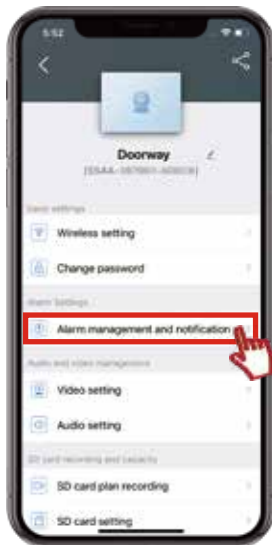
## (Normal Screen Viewing)

Set the functions you need via setting buttons.



# Motion Detection Setting 01

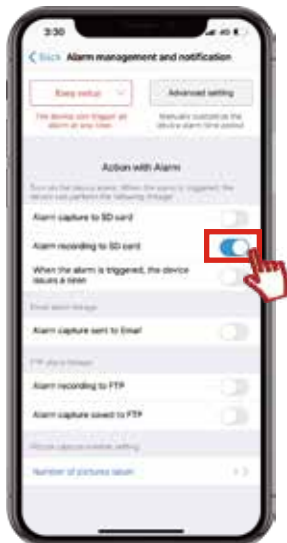
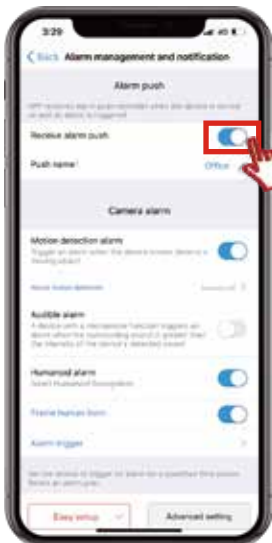
- 1.Click "Setting" gear.
- 2.Alarm management and notification.





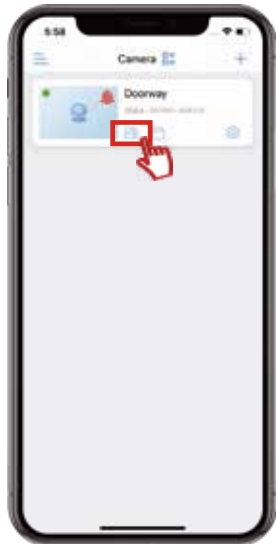
# Motion Detection Setting 02

1. Receive alarm push: Enable
2. Drag down--Alarm recording to SD card



## Motion Detection Setting 03

1. When motion is detected, your phone will get notification.
2. You can play back the video to check what happens.
3. Please make sure the SD card is working.

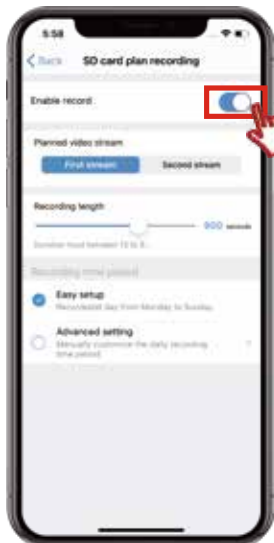


# SD Card Plan Recording 01

1.Select "SD card plan recording"

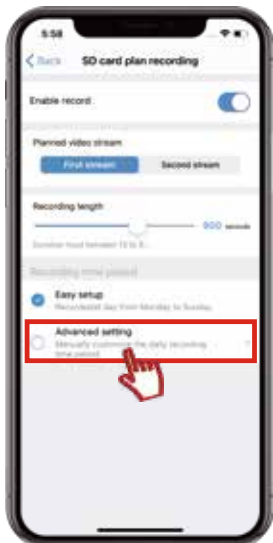
2.Turn on "Enable record"

(The default easy setup is to record constantly 24/7 hours)



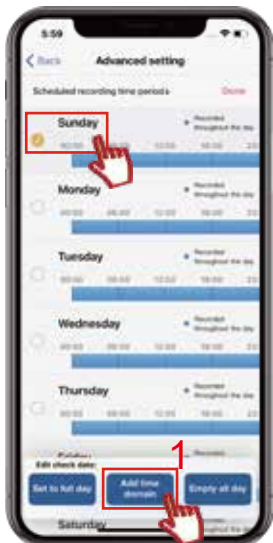
# SD Card Plan Recording 02

1. Enter "Advanced setting"
2. Click "Quick editing" to change the setting



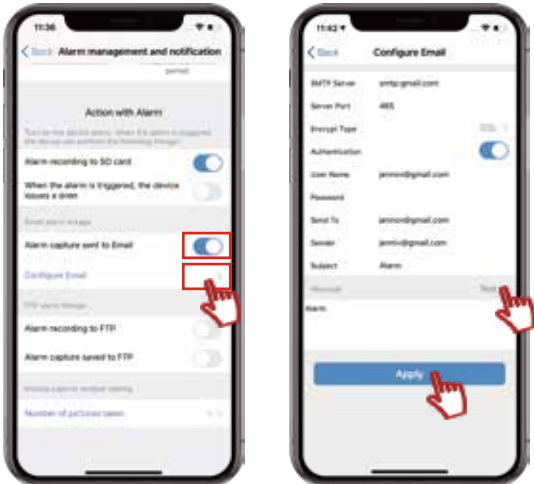
## SD Card Plan Recording 03

1. Select the day you want to modify and add a new time domain.
2. Set up the “Start recording time” and “End recording time” for the new time domain.
3. Click “confirm” to complete the settings.



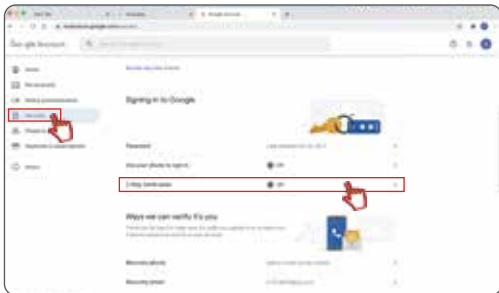
# Email Alarm Setting

1. Turn on "Motion detection alarm" and "Alarm capture sent to Email" at the same time.  
(Email alarm function will be activated only when you have enabled detection alarm function)
2. Click "Configure Email", take Gmail alarm as an example, please check below picture.  
Please kindly note the password is not your Gmail login password, it is a dedicated password generated randomly by Gmail. Please read manual from page 26 to page 30 to find the way how to obtain this 16-bits dedicated password.
3. After completing the settings of Email alarm, the APP will send you email alarm when the camera detect motion.



# Obtain Gmail password 01

1. Please login your Gmail account, and click "Security", and turn on "2-step Verification".



2. Then a new page will appear, click "GET STARTED".



## Obtain Gmail password 02

3.Input your Gmail account password again to login and click “Next” .



4.In order to protect your account security,you will need to verify your mobile phone.Input your phone number and choose the verification way,Text message or Phone call,finally click “Next” .



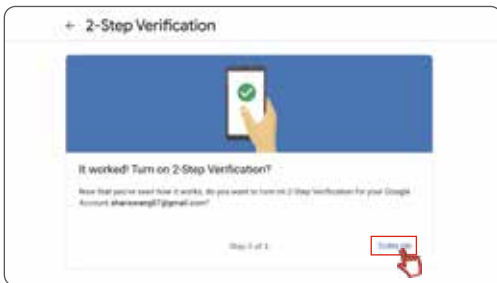


## Obtain Gmail password 03

5. Then enter the verification codes you obtained, and click “Next” .



6. After verified your identification, you can enable the 2-step Verification by clicking “TURN ON” .

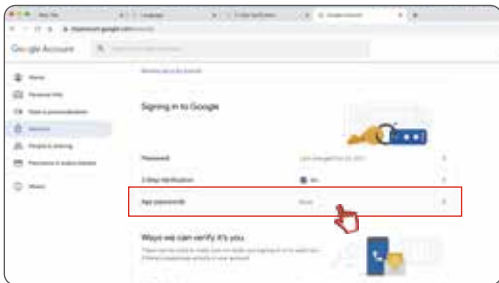


# Obtain Gmail password 04

7. After enabling the “2-Step Verification” function, return back to home page of your Gmail.



8. Choose “Security” and click “APP password” to enter next page.



# Obtain Gmail password 05

9. Enter your Gmail password to login, and click "Next".



10. Choose the corresponding device you login the Gmail account to receive the 16-bit password, and click "GENERATE"



## Obtain Gmail password 06

11.Finally you will obtain the 16-bit password,then enter the password into NVR E-mail settings.



# T-Series software settings on computer 01

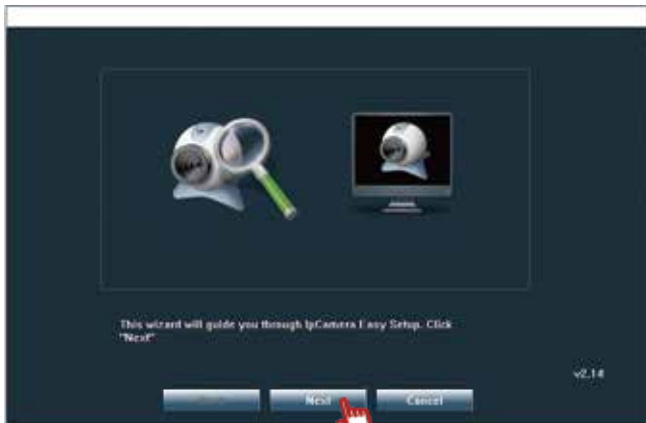
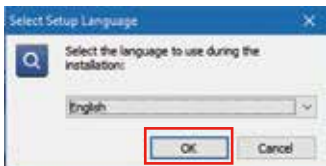
- 1.Input "www.jennov.com" in browser.
- 2.Find "Support"--- "Download"
- 3.Find "T-Series"



## T-Series software settings on computer 02

Dedicated search tool on computer-SearchTool

Connect camera and router by Ethernet cable, please ensure that the camera and router are in the same network segment.



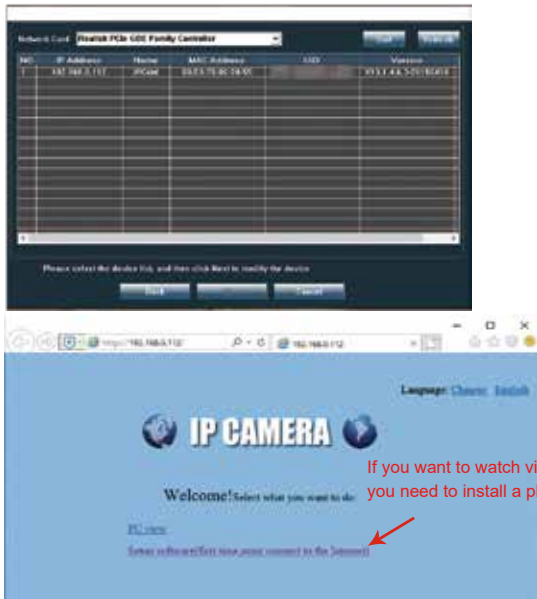
## T-Series software settings on computer 03

Run the software "SearchTool",and the ip address of your camera will appear soon,double click the ip address to watch the live view in IE browser.

If it is the first time for you to watch video in IE browser,you may unable to watch the video before download a plugin.Login user name:admin,password:\*\*\*\*\*

The password is the password set when the phone is logged in.

(If fail to install the plugin,please turn down the IE browser security level.)



# Camera search tool-SearchTool 01

Steps to set up motion detection on SearchTool

Please click Settings>Alarm>Motion detection, then you can select detect areas and sensitivity level.



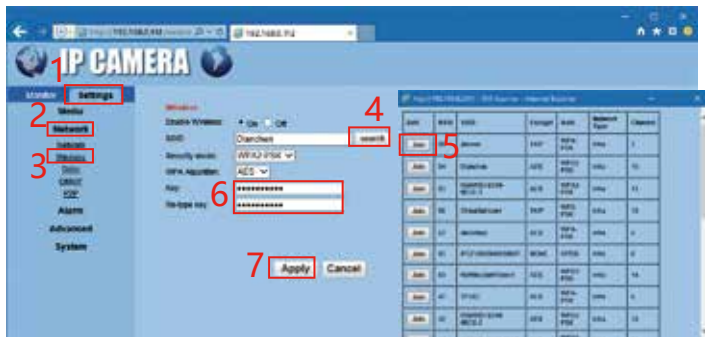


# Camera search tool-SearchTool 02

## Steps to set up wifi connection on SearchTool

Enter System Settings>Network>Wireless.

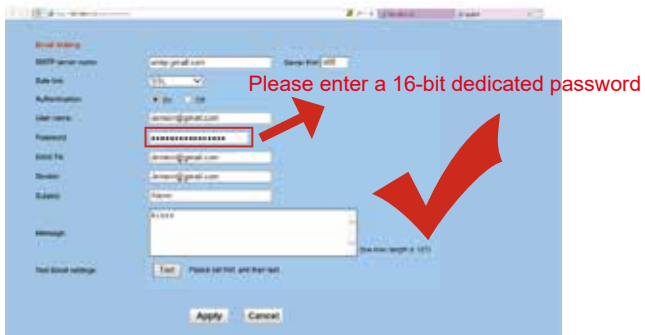
Please ensure you have turn on "Enable Wireless",then click "search", and select your wifi,and enter wifi password,finally click "Apply" to finish the wifi settings.



# Camera search tool-SearchTool 03

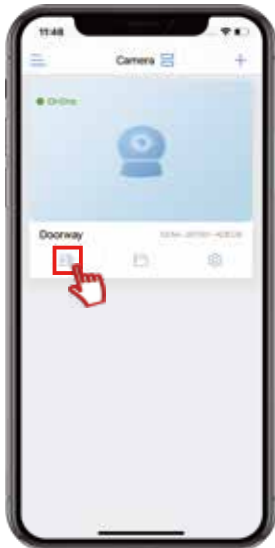
## Steps to set up Email alarm on SearchTool

Please follow the steps as below picture shows to set up Email alarm via SearchTool, and you can refer to page 26 to page 30 to obtain the dedicated 16-bit password.



## Playback on mobile phone 01

- 1.Remote playback is to play the videos recorded on the SD card.
- 2.Run CamHipro APP,and click playback icon to check the videos.

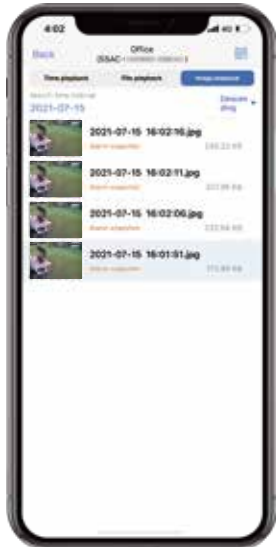


## Playback on mobile phone 02

Select "Time playback".

Drag the cursor to control the time point you want to playback.

Select "image playback" See the saved snapshot image.



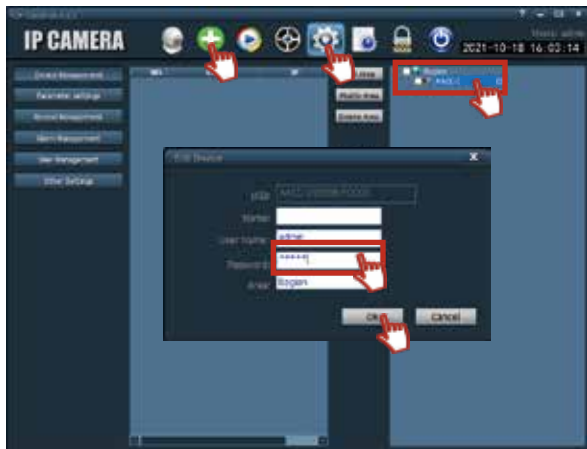
# Hip2p password login

Note: If you are watching directly on the computer, no password is required (provided that the phone is not connected).

If you set a password for the camera on your mobile phone, you also need to set the password when viewing on the PC client.

Open the client and click the + sign to add a device. At this time, if your phone has changed the camera password, it will prompt that the password is incorrect. Follow the steps below to use the client.

Open the client to find the settings, double-click the UID number of the device with the left mouse button, and the editing interface pops up, enter the password you set on the phone in the password position, click OK, click the preview interface, double-click the UID number in the region to watch the screen normally .



Note: IE browser requires Flash support, but after Flash stops updating, the device will no longer continue to use IE browser to watch.

You can only use the mobile APP and client to watch, please understand.

# Remote view software on PC-HiP2P

## Steps to playback on HiP2P

Please click "Remote playback", and you can select channel (your camera UID) and Choose date/Start Time/End Time to search the video files to playback.



# Playback videos via IE browser

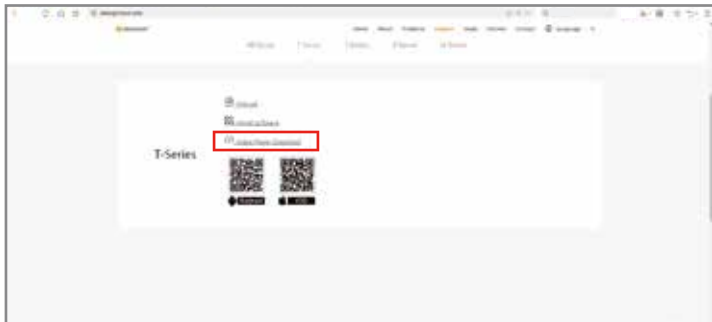
You can playback local videos via IE browser.

This function requires your camera and computer connect to the same router.



# Dedicated video player download 01

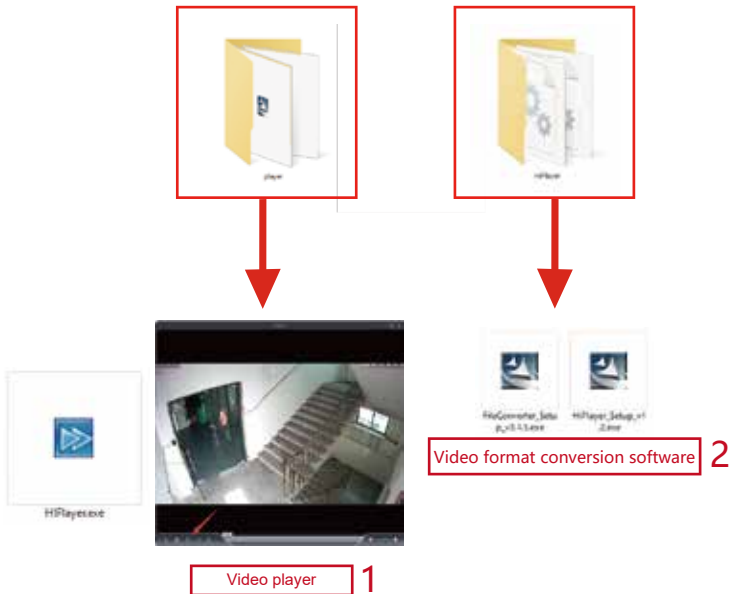
1. Go to "www.jennov.com"
2. Find "Support" --- "Download"
3. Find "T-Series" --- "Video Player Download"





## Dedicated video player download 02

- 1.You need to use special video play to playback downloaded video files or videos saved in your camera's SD card.(For H.264/H.265 video files)
- 2.With this player,you can convert H.264/H.265 files to AVI format and play it via other video player.



Dear Customer,

Thank you for your purchase from us.

We can promise all the products meet professional standards in surveillance industry.

Hope you are satisfied with our product and service.

If you have any problem in use our product, please contact Jennov Customer Service.

Website: [www.jennov.com](http://www.jennov.com)

Email: [support@jennov.com](mailto:support@jennov.com)

US-Direct Line: 0013239021978

Note: This equipment has been tested and found to comply with the limits for a Class

B digital device, pursuant to Part 15 of the FCC Rules. These limits are designed to

provide reasonable protection against harmful interference in a residential installation.

This equipment generates, uses and can radiate radio frequency energy and, if not

installed and used in accordance with the instructions, may cause harmful interference

to radio communications.

However, there is no guarantee that interference will not occur in a particular

installation. If this equipment does cause harmful interference to radio or television

reception, which can be determined by turning the equipment off and on, the user is

encouraged to try to correct the interference by one or more of the following

measures:

Reorient or relocate the receiving antenna.

Increase the separation between the equipment and receiver.

Connect the equipment into an outlet on a circuit different from that to which the

receiver is connected.

Consult the dealer or an experienced radio/TV technician for help.

Warning: Changes or modifications to this unit not expressly approved by the part

responsible for compliance could void the user' s authority to operate the equipment.

### FCC Radiation Exposure Statement

This equipment complied with FCC radiation exposure limits set forth for an uncontrolled

environment. This equipment should be installed and operated with minimum distance 20cm

between the radiator & your body.