

Note: There is a removable protective film on the keypad. Not scratches! If you like, you can peel it off after installation.

Below are some how-to videos.

#1. Video about how to install the handle and tumbler:

<https://youtu.be/HsGX5VQmpKk>

#2. Video about how to install the lockset to the door:

<https://youtu.be/nNBn5E4efV0>

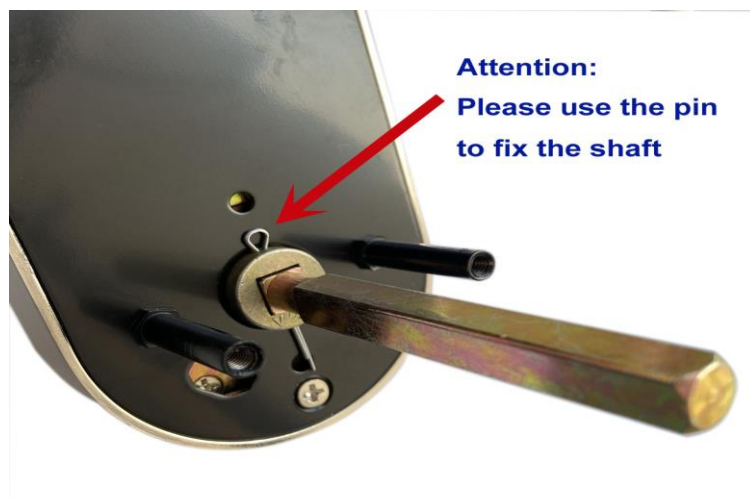
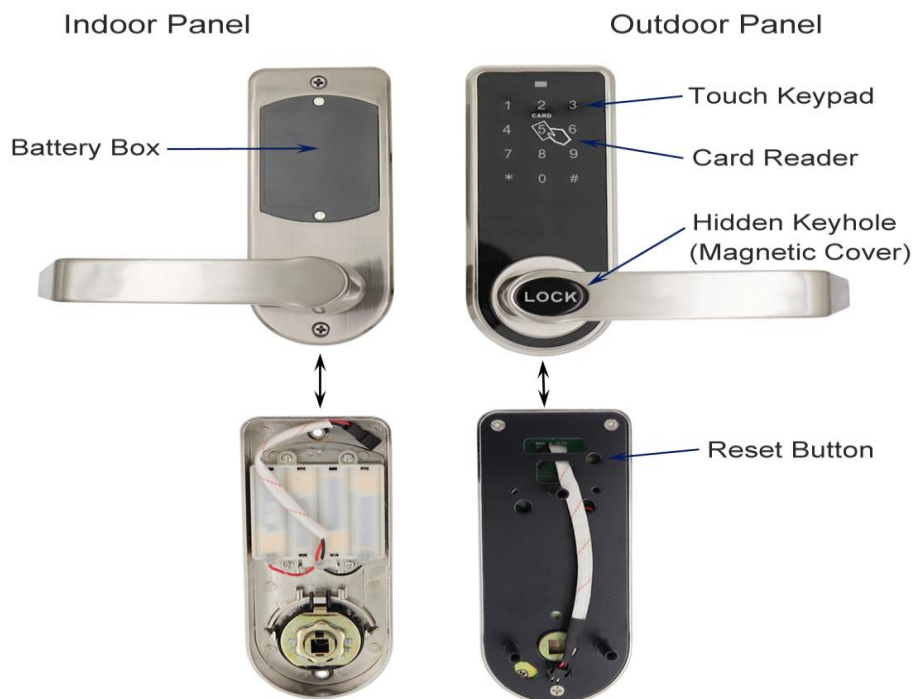
#3. Video about how to set up RFID cards to unlock:

<https://youtu.be/DzwHWsh5hkU>

#4. Video about how to set up passwords to unlock:

<https://youtu.be/8Sml2pEpUY>

If you have problem in use/installation, please feel free to contact us for assistance by email: support@etekjoy.com



Quick Guide

There are 3 ways to reset the lock.

#1 Method: Press the Reset Button.

#2 Method: Read the admin card 7 times (Swipe 7 times)

#3 Method: Input codes: admin password, #, 7.

Examples of password settings

Change default admin password 12345678 to new admin password 87654321.

Input: 12345678, #, 1, 87654321, #, 87654321, #, *

Set up a new user password 13579

Input: admin password, #, 8, 13579, #, 13579, #, *

Set up admin card

At the very beginning or after resetting, the first and second configured card are admin cards. You can set up only one admin card or two admin cards max. For example, after resetting, swipe a card in the RFID sensing area. This card will be configured as admin card.

Set up user card(s)

Read cards as the following: admin card, new user card(s)

ETEKJOY 3-in-1 Electronic Interior Door Lock for Home & Office

The lock has powerful functions and is convenience for use. It can be unlocked by password, RFID card and mechanical key. Passwords and cards are set up by users to ensure max safety. It fits home and office interior doors.

Main Features:

- Card management: 2 admin cards and 200 user cards max.
- Emergency mechanical key
- Touch screen password input
- Password can be set freely: 1 admin password and 50 user passwords max.
- Support garbled input: 12 digits max (add random code before and/or after true code).
- Low power alarm
- Easy to install: hole dig diagram (found in the end of the manual)

1, Reset Door Lock

1.1. Press Reset Button about 3 seconds, one long beep, release the button. Resetting succeeds. All admin and user cards, admin and user passwords are removed and the lock is reset to default. The default admin password after resetting is [12345678](#).

2. Set Up Admin Card

2.1. The first configured card after resetting is the admin card. There is one long beep after setting the first admin card, and two long beeps after setting the second admin card. You can use 1 or 2 admin card(s).

Admin Card Instruction		
Times for swiping admin card	function	Phenomenon
1 time	Unlock & Set user cards	One short beep. Green light blinks.
2 times	Delete user card	One long beep. Red light blinks.
3 times	Delete lost user card	Two long beeps. Red light blinks.
4 times	---	One short beep. Red light blinks.

5 times	Delete all user cards	Three long beeps. Red light blinks. Buzzer beeping twice quickly means deletion completes.
6 times	N/A	One short beep. Red light blinks.
7 times	Reset the lock to default	One long beep. Red light links. Buzzer beeping twice quickly means resetting completes.

3.Set Up User Card

3.1. Swipe admin card. One beep. Motor turns (unlock). Green light blinks. Enter the mode of setting up user card.

3.2. Swipe a new card. One long beep means setting successfully. Repeat this step to set another user card.

There will be 2 short beeps if this card already exists (set up before)

Up to 200 user cards can be set up.

3.3. If the lock doesn't detect an effective card, it will exit user-card-set mode.

4. Delete User Card

Setting	Operation	Sound/Light
Delete single user card	Swipe an admin card twice	1 long beep, green light blinks
	Swipe the card you want to delete	1 short beep
	Deletion succeeds	
	Repeat steps above can delete other cards.	
	If the card doesn't exist, there will be 2 short beeps	
Delete single lost user card	swipe admin card 3 times	2 long beep, green light blinks quickly
	Swipe the card set before the lost one	1 short beep
	Deletion succeeds	
	Repeat steps above can delete other cards	
	If you lose the first user card, swipe the last user card to delete it in this mode.	
Delete all user cards	Swipe admin card 5 times	3 long beep, green light blinks, 2 beep
	Deletion succeeds	

Touch Screen Usage

Touch screen panel is under dormancy mode to extend battery life. Touch "5" to activate the screen. Back light on means that screen is activated. The screen will go back to dormancy mode if no input within 5 seconds.

Set Up Password

The default admin password is [12345678](#). Input admin password and press # button. Buzzer beeps one time. Unlock. Green light blinks. Choose the corresponding functions.

Password Instruction		
Function Button	Function	Sound/Light
1	Change admin password	One long beep, green light and red light blink alternately
8	Set up user password	One long beep, green light blinks
4	Delete next user password	one long beep, red light blinks
0	Delete all user passwords	Three beeps, red light blinks
9	Set up passage mode (unlock always)	Red light on, one long beep, unlock, enter passage mode; Green light on, one long beep, lock, cancel passage mode
7	Reset the lock to default	One long beeps, red light blinks, buzzer beeps twice quickly means resetting completes.

Settings	Operations	Sound/Light
Change admin password	Input the old admin password and #	1 short beep, red and green light blink alternately
	Press button "1"	

	Input new 8-digit admin password	1 long beep
	Press button #	
	Re-input the new admin password	Green light on, 3 long beeps
	Press button #	
	Setting done	
	If inputting wrong admin password at the second time (Two times' don't match)	
		5 beeps
	Re-input new admin password	Green light on, 3 long beeps
	Press button #	
	Setting done	
	Or press button * to exit.	

Set up user password	Input the admin password	motor turns
	Press button #	
	Press button "8"	1 long beep, green light blinks
	Input a 4-6 digit user password	1 long beep
	Press button #	
	Re-input the user password	2 long beep
	Press button #	
	Setting done	
	If inputting wrong user password at the second time (Two times' don't match)	
		after 5 beeps
	Re-input correct user password	
	Setting done	
	If the user password already exists	2 short beeps
	Up to 50 user passwords can be set	
	Press button * to exit.	

Delete single user password	Input the admin password and #	1 long beep, red light blinks
	Press button “4”	
	Input the user password set before the one you want to delete. (Input the last password to delete the first password)	1 short beep
	Deletion done	
	Press button * to exit.	
Delete all user passwords	Input the admin password and #	3 long beeps, red light blinks, final two beeps means that deletion completes
	Press button “0”	
	Deletion done	
	Press button * to exit	
Change user password	Input the old user password and #	1 short beep, red light and green light blink alternately
	Press button “1”	
	Input new 4-6 digit user password	long beep
	Press button #	
	Re-input the new user password	3 long beeps, green light on
	Press button #	
	Changing user password done. Old password is invalid. New password works.	
	If input the wrong password at the second time	

	press button #	after 5 beeps
	Re-input password	
	Done	
	Press button * to exit	

5. Unlock

5.1 By RFID Card

Swipe a card in the sensing area, motor turns after 1 beep, green light on. Unlock. The lock will re-lock automatically if it detects the action of opening door by the handle. If no action, 3 seconds later, green light off, it will re-lock automatically.

5.2, By Admin Password

Input admin password and #, 1 beep, motor turns, green light on, unlock. The lock will re-lock automatically if it detects the action of opening door by the handle. If no action, 5 seconds later, green light off, it will re-lock automatically.

5.3, By User Password

Input password and #, 1 beep, motor turns, green light on, unlock. The lock will re-lock automatically if it detects the action of opening door by the handle. If no action, 5 seconds later, green light off, it will re-lock automatically.

5.4, By mechanical Key

You can use the metal key to unlock anytime. (Tips: You can put a sticky tape on the keyhole cover, and move it off quickly.)

Remarks:

- A. If password or card is invalid, there will be 3 short beeps, the red light turns on.
- B. if the power is low, there will be 5 continuous beeps, red light turns on. After the low power alarm alerts for the first time, the lock can unlock about 200 times at least. To ensure the normal use, please replace the batteries ASAP..
- C. The keypad will be locked for 5 minutes after 5 consecutive wrong inputs.

Technical Parameter

*Working Voltage: 6.0V(4x AA alkaline batteries)

*Static Consumption: below 100uA

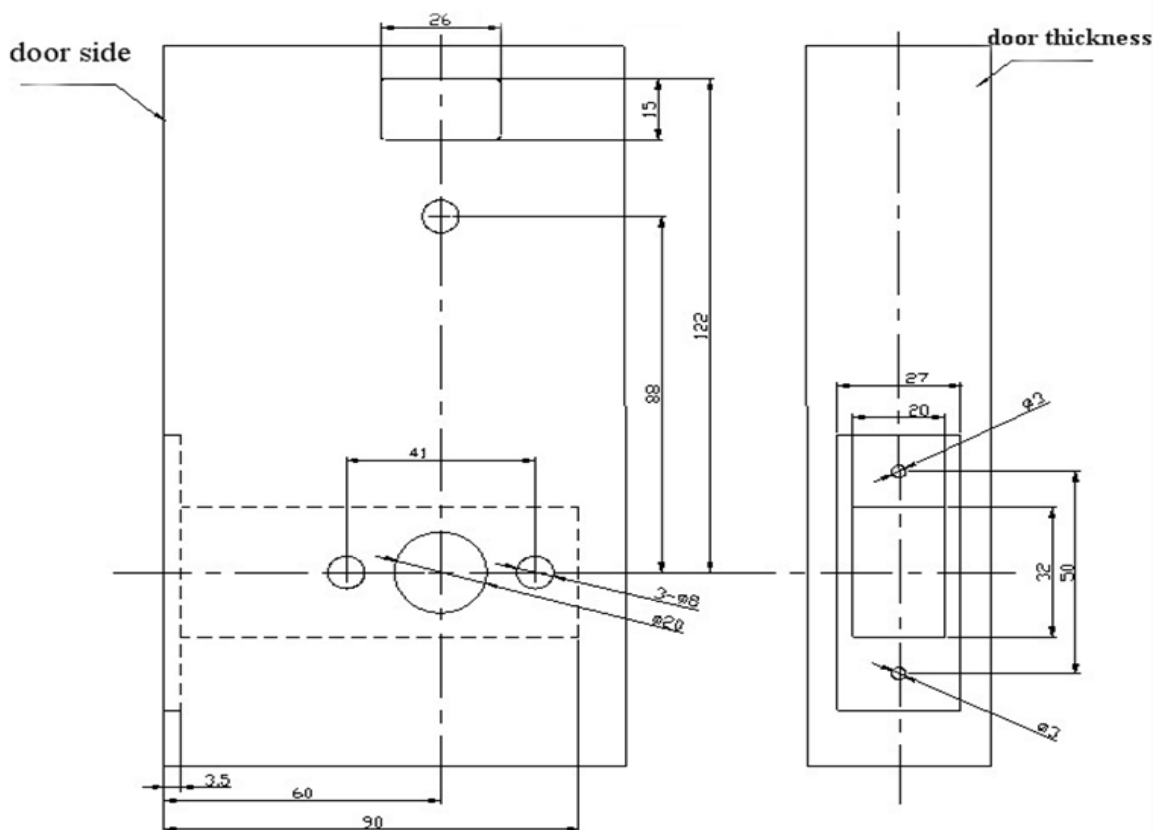
*Dynamic Consumption: below 300uA

*Battery life: over 10 months (4x AA quality alkaline batteries)

*Low power alarm voltage: 4.5V

*Card Max Sensing Distance: above 25mm (125KHz RFID card/tag)

office&home interior door lock 818



FCC Statement

Changes or modifications not expressly approved by the party responsible for compliance could void the user's authority to operate the equipment.

This equipment has been tested and found to comply with the limits for a Class B digital device, pursuant to Part 15 of the FCC Rules. These limits are designed to provide reasonable protection against harmful interference in a residential installation. This equipment generates uses and can radiate radio frequency energy and, if not installed and used in accordance with the instructions, may cause harmful interference to radio communications. However, there is no guarantee that interference will not occur in a particular installation. If this equipment does cause harmful interference to radio or television reception, which can be determined by turning the equipment off and on, the user is encouraged to try to correct the interference by one or more of the following measures:

- Reorient or relocate the receiving antenna.
- Increase the separation between the equipment and receiver.
- Connect the equipment into an outlet on a circuit different from that to which the receiver is connected.
- Consult the dealer or an experienced radio/TV technician for help

This device complies with part 15 of the FCC rules. Operation is subject to the following two conditions (1) this device may not cause harmful interference, and (2) this device must accept any interference received, including interference that may cause undesired operation.

This equipment complies with FCC radiation exposure limits set forth for an uncontrolled environment.