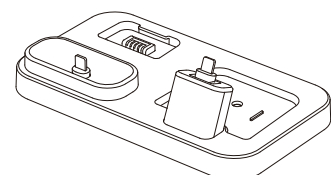


3 in 1 Charging Station

Model NO. :ST-A8-BL

- ① Highest internal frequency: 350kHz
- ② Input: DC 5V2.1A-5V3A
- ③ Output: DC 5V2A

PART LIST



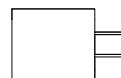
Base * 1



Watch Charger * 1



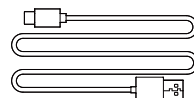
Support Back for
Cellphone * 1



Wall Charger * 1



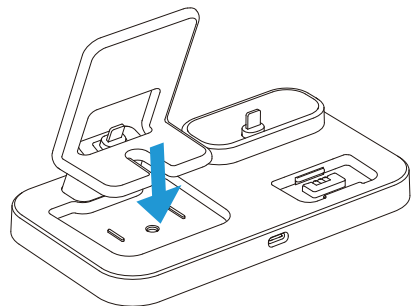
Screw Knob * 1



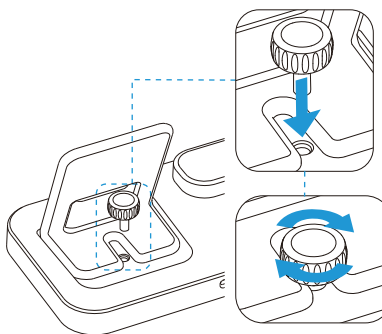
Cable * 1

INSTALLATION NOTES

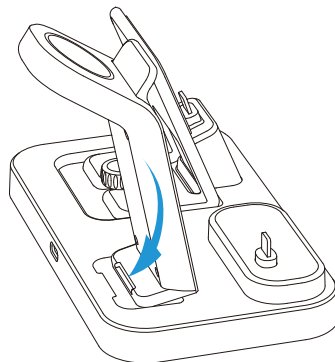
- ① Place the phone back vertically downwards.



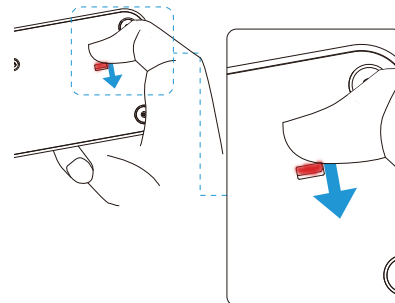
- ② Install the screw knob.



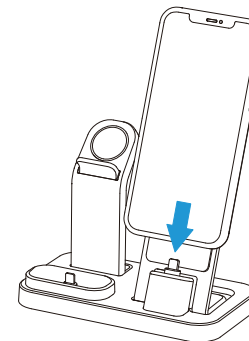
- ③ Insert the watch charger into the base obliquely, then press it down.



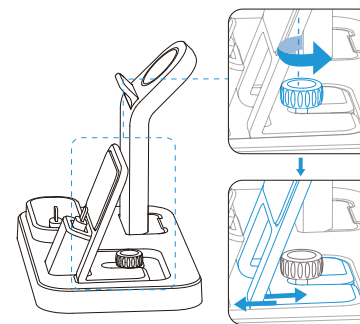
- ④ If you need to remove the watch charger, just press the red area at the bottom and then you could take it off.



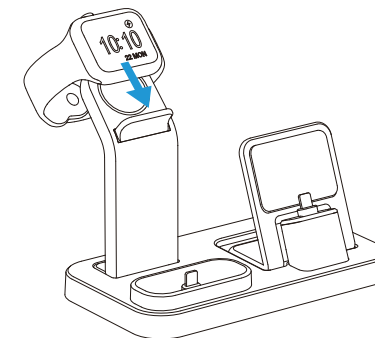
- ⑤ Align the phone and insert.



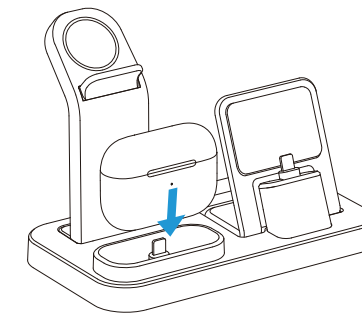
- ⑥ Also you could adjust phone holder to reach a suitable distance.



- ⑦ Put your watch on the watch charger.

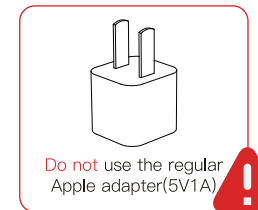


- ⑧ Put your AirPods on the AirPods holder.



WARM TIPS

- ①



Recommend
Charger
✓ 5V2.1A



- ② Reach us by your Amazon order detail page (select “order” “sold by” or “contact seller”) for warranty about it.



1 Year Warranty and
Dedicated Customer Service.

物料号：ST-A8说明书版本v2.0

FCC statement:

This device complies with Part 15 of the FCC rules. Operation is subject to the following two conditions: 1) this device may not cause harmful interference, and 2) this device must accept any interference received, including interference that may cause undesired operation.

Note: This equipment has been tested and found to comply with the limits for a Class B digital device, pursuant to part 15 of the FCC Rules. These limits are designed to provide reasonable protection against harmful interference in a residential installation.

This equipment generates uses and can radiate radio frequency energy and, if not installed and used in accordance with the instructions, may cause harmful interference to radio communications. However, there is no guarantee that interference will not occur in particular installation. If this equipment does cause harmful interference to radio or television reception, which can be determined by turning the equipment off and on, the user is encouraged to try to correct the interference by one or more of the following measures:

- Reorient or relocate the receiving antenna.
- Increase the separation between the equipment and receiver.
- Connect the equipment into an outlet on a circuit different from that to which the receiver is connected.
- Consult the dealer or an experienced radio/TV technician for help.

Changes or modifications not expressly approved by the party responsible for compliance could void the user's authority to operate the equipment.

Radiation Exposure Statement

This device complies with FCC RF radiation exposure limits set forth for an uncontrolled environment. This transmitter must not be co-located or operating in conjunction with any other antenna or transmitter. During the operation of device a distance of 15 cm surrounding the device and 20 cm above the top surface of the device must be respected.