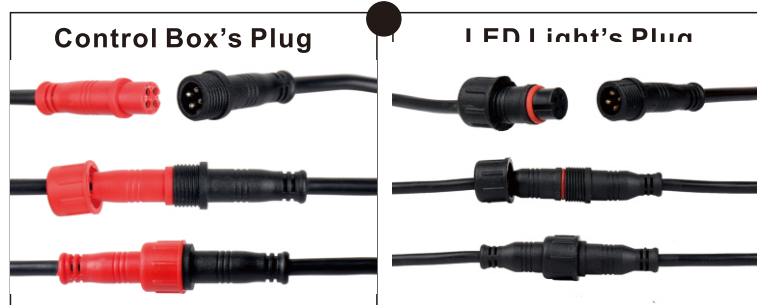


## RGB LED Light Connecting Instruction

\* This instruction is for all the LED lights that use Ble\_Light APP for remote.



### Step 1:

Please check that all the plugs connected tightly. If the connection is loosened, then the LED lights may not light up, so please make sure all the plugs are connected tightly.



### Step 2:

Connect the lights and the wiring harness to the control box, red wire connect to ACC(12V DC), black wire connect to negative electrode.

### Step 3:

There are two methods to download the APP.

#### Method1:

Scan the QR code on the control box to download the Ble\_Light app as picture show.

#### Method 2:

IOS: Search "OL-ble light" on APP Store as picture show. Android: Search "OL-blelight" on APP Store as picture show.

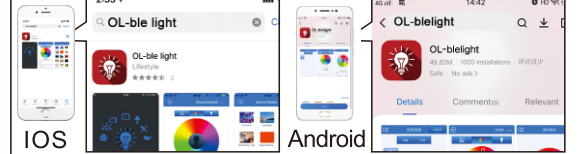
After you download the Ble\_Light app, please reference below "Ble\_Light Operating Instruction" to start control the color of the RGB LED lights.

Method 1:Scan QR Code to Download APP

Left Code for IOS

Right Code for Android

Method 2:Search "OL-blelight" on APP Store

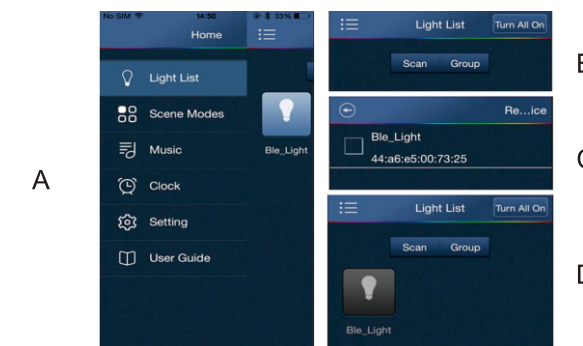


### Tips:

- 1.Please connect all the LED lights together before they connect to the power, avoiding strong current make the lights burned.
- 2.Please Do Not put the control box nearby the engine or any hot places. The Working Temperature of the control box is -20°C - +70°C. The control box is not waterproof, so please keep it in somewhere dry. And please place the control box to non-metallic substances place, then the connection will be better.
- 3.If you connect the control box red wire to battery, black wire to negative, then the RGB LED lights will need to use the app to switch it off.
- 4.Please turn on the location permission of your phone before use the app, to make the app to find out the RGB LED lights. If your phone already turn on the location permission, please ignore this tip.

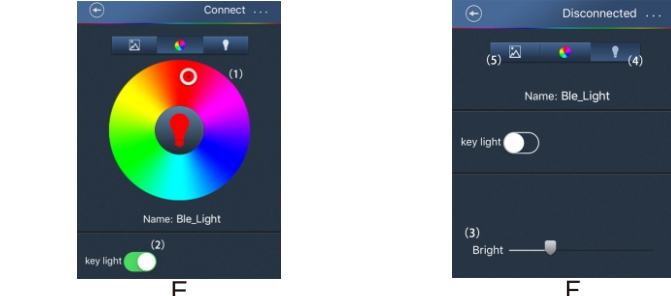
### BLE\_Light Operating Instruction

- 1 Go to "setting">"Bluetooth", and open the mobile Bluetooth
- 2 Click slide left/right to switch between "Home" and "Function" interface. Pic. **A**



- 3 Click "Home">"Light List">"Scan", select the scanned BLE\_Lights, then click back to your "Light List". Pic. **B&C&D**

- 4 Click in this icon, then click "Connect". Pic. **D&E**
- 5 (1) Adjustment of key lights' color on the color disk (2) control the key light's on/off (3) Sliding brightness bar can adjust the brightness of the lights (4) Click this icon, to set white lighting (5) Click this icon, DIY the color on the picture from album or take photo. Pic. **E&F**



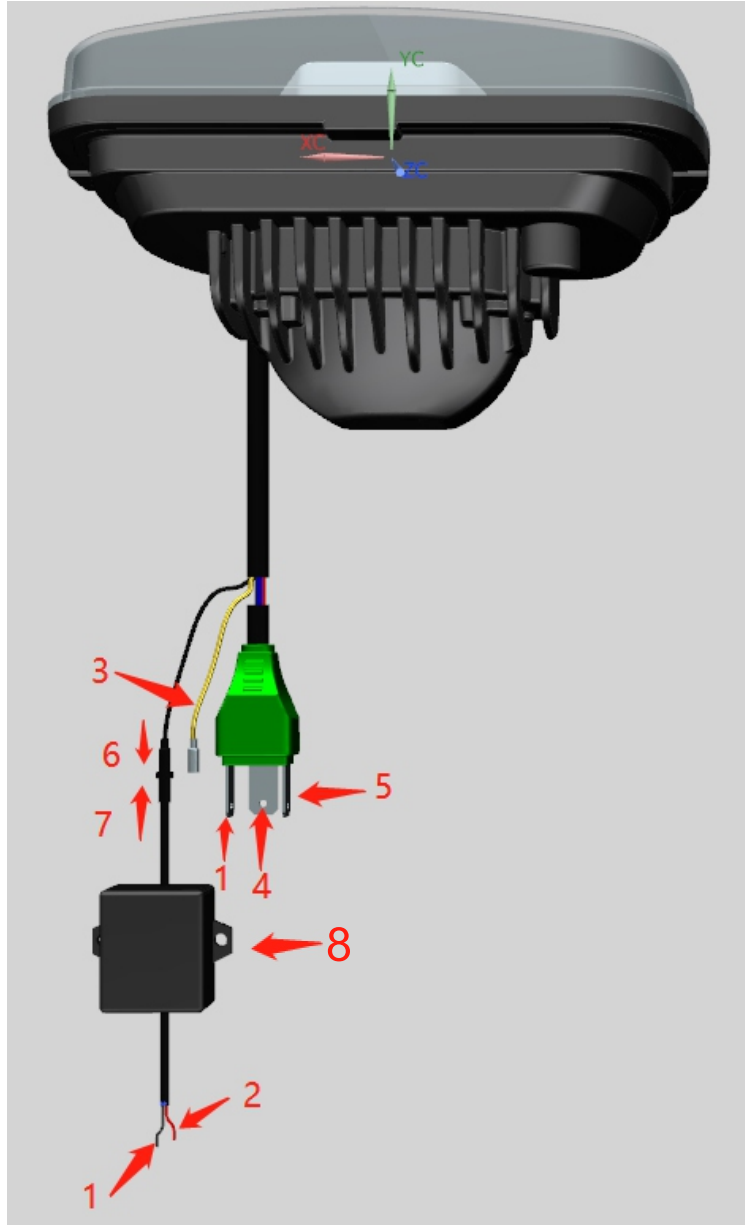
## Use Guidelines

### OL-2071SRGB RGB LED Light

### Electric Parameter

Input Parameter: DC 12V  
Turn Signal: 0.07A  
Low Beam: 2A  
High Beam: 2.63A

### Wire Diagram:

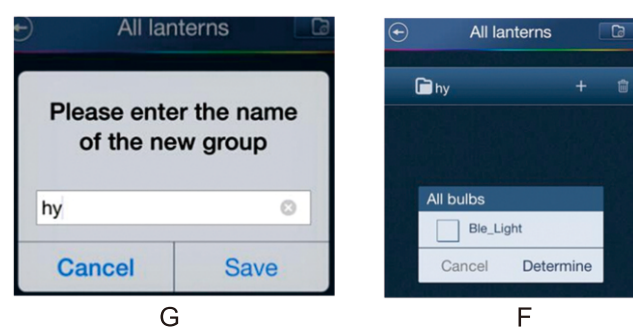


- 1—GND
- 2—Control Box Positive(Red Wire)
- 3—Turn Signal(Yellow Wire)
- 4—Low Beam
- 5—High Beam
- 6+7—Connected
- 8—Control Box

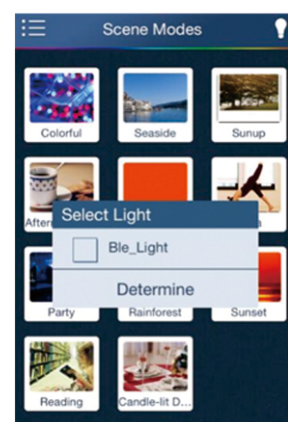
- ①High beam and low beam connects to OEM Headlights' socket (H4 Plug)
- ②Turn signal connects to OEM turn signal-positive(Yellow Wire)
- ③RGB Control Box positive connects to ACC(Red Wire)
- ④RGB Control Box negative connects to ground(Black Wire)
- ⑤No.6 connects to No.7

- 6 Group Control: Click group - "light list interface", setting up a new group and control the lights in the group.

**Warm Note:** APP can connect at most 4 light kits. Any group combination ways to control all the lights, single control is also available. Pic. **G&H**



- 7 Click "Home" > "Scene Modes", entering to the Scene Mode interface and click upper right icon to select the lights which need to be controlled, then select the scene mode and the lights will turn to the selected mode. Pic. **I**



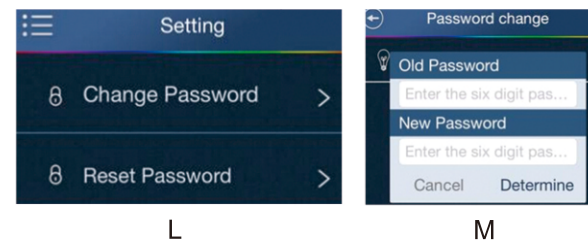
- 8 Click "Home" > "Music", entering to Music interface and click the upper right icon to add music to the music list, then the light color will change with the music rhythm. Pic. **J**



- 9 Click "Home" > "Clock", entering to the Clock interface to add a new clock. Pic. **K**



- 10 Click "Home" > "Setting", entering to Setting interface to modify connection password, or reset the password. Pic. **L&M**



#### Warm Note:

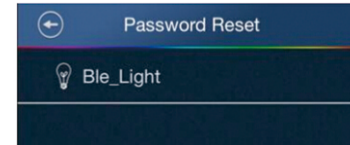
- ①Light's original password: 000000
- ②Modify Password interface can only modify the connected light's password. The corresponding light will be flashing when modifying password.

- 11 Reset Password: When you forget your light's password, you can reset your password.

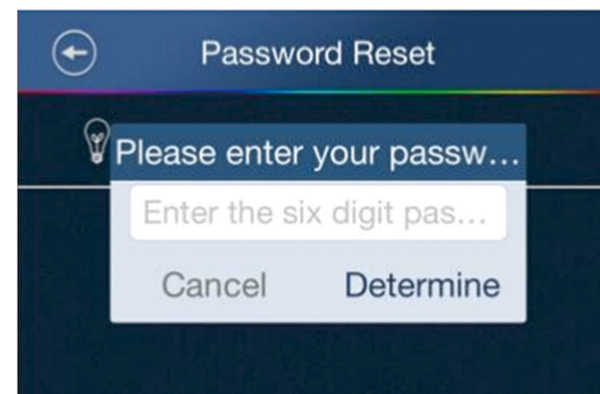
- (1)Scan and add the lights which need to reset password in Light List interface. Pic. **N**



- (2)Click "Home" > "setting" > "Reset Password", then there will display the added lights and these lights haven't connected. Pic. **O**



- (3)Cut the lights' power and then power on, click the light's name in 30S and there will Pop-up reset password box. Input password and click confirm, then the system will tip password reset successful. Pic. **P**



If you have any questions of this **RGB LED** light, please feel free to contact us with order ID, we will do our utmost to assist you.

### FCC STATEMENT

This device complies with Part 15 of the FCC Rules. Operation is subject to the following two conditions:

- (1) This device may not cause harmful interference, and
- (2) This device must accept any interference received, including interference that may cause undesired operation.

**Warning:** Changes or modifications not expressly approved by the party responsible for compliance could void the user's authority to operate the equipment.

**NOTE:** This equipment has been tested and found to comply with the limits for a Class B digital device, pursuant to Part 15 of the FCC Rules. These limits are designed to provide reasonable protection against harmful interference in a residential installation. This equipment generates uses and can radiate radio frequency energy and, if not installed and used in accordance with the instructions, may cause harmful interference to radio communications. However, there is no guarantee that interference will not occur in a particular installation. If this equipment does cause harmful interference to radio or television reception, which can be determined by turning the equipment off and on, the user is encouraged to try to correct the interference by one or more of the following measures:

- ☐ Reorient or relocate the receiving antenna.
- ☐ Increase the separation between the equipment and receiver.
- ☐ Connect the equipment into an outlet on a circuit different from that to which the receiver is connected.
- ☐ Consult the dealer or an experienced radio/TV technician for help.

### FCC Radiation Exposure Statement:

This equipment complies with FCC radiation exposure limits set forth for an uncontrolled environment. This equipment should be installed and operated with minimum distance 20cm between the radiator & your body.