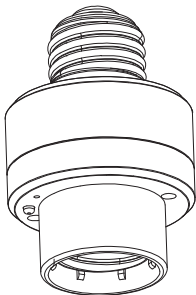




Remote Control Transmitter

WT101

[Instruction Manual]



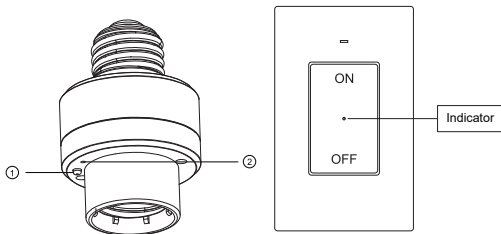
Please pay attention to the warning signs
Read the instructions with caution before operating
and keep it properly

Warning:

To reduce the risk of fire, electric shock, or personal injury, please strictly follow the instructions.

1. Indoor use only. Avoid high humidity, high temperature, and areas with a high magnetic field.
2. Always be sure to cut off the power before installing the receiver.
3. Don't connect any device that may exceed the performance limits of the receiver.
4. Don't install or repair the product Only authorized service personnel should undertake such installation and repairs.
5. If the remote is not in use for an extended period time, remove batteries.
6. Used batteries should be disposed of safely and properly.
7. To prevent a choking hazard, keep packing materials away from children.
8. Do not use the battery again if it is dropped or knocked out of shape.

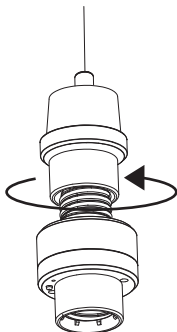
Product Layout



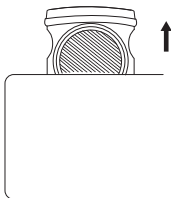
① Program button (On/Off button)

② Indicator

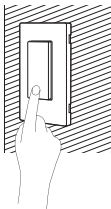
Operating Instructions



1. Please screw the lamp head to the lamp holder.



2. Remove the isolation tab in the battery compartment of the transmitter.



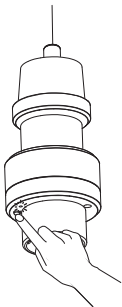
3. Press the ON/OFF button on the wall switch remote control to turn the receiver on and off.

Note:

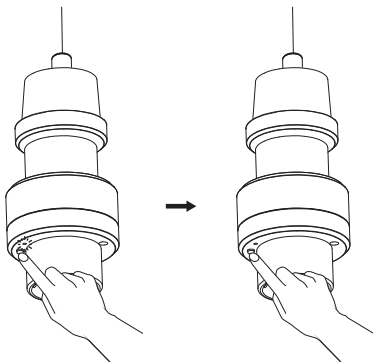
1. The program button of the receiver can also be used as a manual switch.
2. The receiver will remain "OFF" after a power cut to save energy.

Canceling Programming

To remove a receiver from all transmitter pairings (no remote transmitter can control it):



1. Press the program button on the receiver for 6 seconds until the indicator light starts to flash rapidly. (Note: The light flashes from slowly to rapidly.)

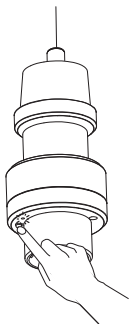


2. Release the program button and then press it again. The indicator light will be off. All the programming has been canceled.

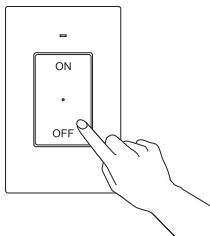
Programming the Receiver

The receivers and transmitters have been pre-paired for immediately use, but there are few units may not be pre-programmed or programmed incorrectly, or you want to customize the configuration to meet your needs.

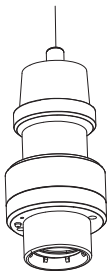
To program a transmitter and receiver, please follow the steps below:



1. Press the program button on the receiver for 3 seconds until the indicator light starts to flash slowly.



2. Release the program button, then press the ON button (1) on the transmitter, and after 1 second, press the OFF button (1).

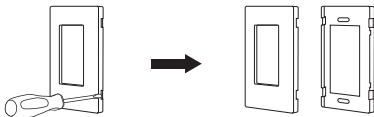


3. Programming / pairing is successful when the indicator light stops blinking.

Note:

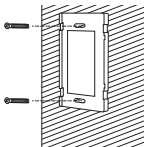
Each set of ON or OFF button can be paired with and control several outlets;
Each outlet can be paired and controlled by multiple transmitters.

Mounting the Wall Switch

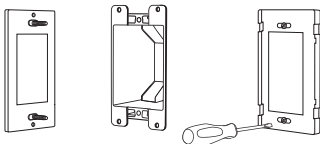


1. Separate the upper and lower shells of the Wall Switch.

Way1



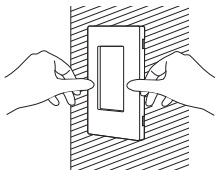
Way2



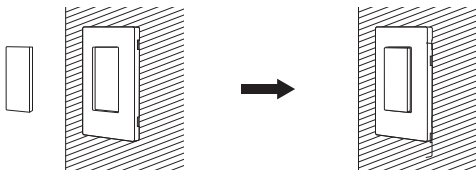
2.Install Wall Plate

Way1: Secure the lower housing of the wall switch to the wall using the provided mounting screws.

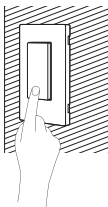
Way2: Secure the lower housing of the wall switch inside the wall box using the provided mounting screws.



3.Attach the upper shell to the lower shell.



4. Attach the transmitter to the base.



5. Press the ON/OFF button on the wall switch remote control to turn the receiver on and off.

Battery Replacement

1. If you find the receiver is working abnormally or the indicator on the transmitter becomes dim, replace the remote battery with a new CR2032 3V battery, making sure the polarity +/- of the battery is correct.
2. Low battery power may decrease readable wireless remote range.
3. Remove batteries if the remote is not in use for an extended period of time.

Troubleshooting

In the case that one receiver is unresponsive to the remote control, please follow the steps below to resolve the issue:

1. If the wire switch receiver is unresponsive to the remote control, please refer to the "Canceling Programming" and "Programming the Receiver" sections in the manual to reprogram the receiver.
2. Make sure the receiver and appliance are properly connected and powered on.
3. Replace the remote battery with a new CR2032 3V battery.
4. The remote transmitter may be too far away to control the receiver.
5. Make sure not to exceed the maximum load.
6. "Canceling Program" is always prior to "Programming the Receiver" when you would like to make changes.

Specifications

- Input Voltage: 120VAC, 60Hz
- Max.load Power: Incandescent Bulb 100W; CFL/LED 60W
- Transmission Frequency: 433.92MHz
- Remote Control Distance:100 Feet (Free Area)
- Remote Battery: CR2032 3V
- Socket Type: Standard Medium E26 E27

Safety Information

Federal Communications Commission Interference Statement. This equipment has been tested and found to comply with the limits for Class B digital device, pursuant to part 15 of the FCC Rules. These limits are designed to provide reasonable protection against harmful interference in a residential installation. This equipment generates, uses and can radiate radio frequency energy and, if not installed and used in accordance with the instructions, may cause harmful interference to radio or television reception, which can be determined by turning the equipment off and on, the user is encouraged to try to correct the interference by one or more of the following measures:

- Redirect or relocate the receiving antenna.
- Increase distance between the equipment and the receiver.

- Connect the equipment into an outlet on a circuit different from that to which the receiver is connected.
- Consult the dealer or an experienced radio/TV technician for help.

This device complies with Part 15 of the FCC Rules. Operation is subject to the following two conditions:

(1) this device may not cause interference, and (2) this device must accept any interference, including interference that may cause undesired operation of the device.

FCC Caution: Any changes or modifications not expressly approved by the party responsible for compliance could void the user's authority to operate this equipment

This equipment complies with FCC radiation exposure limits set forth for an uncontrolled environment. This equipment should be installed and operated with minimum distance 20cm between the radiator & your body.

ISED Warning:

This device complies with Innovation, Science, and Economic Development Canada licence-exempt RSS standard(s). Operation is subject to the following two conditions:

- (1) this device may not cause interference, and
- (2) this device must accept any interference, including interference that may cause undesired operation of the device.

Le présent appareil est conforme aux CNR d'Innovation, Sciences et Développement économique Canada applicables aux appareils radio exempts de licence. L'exploitation est autorisée aux deux conditions suivantes :

- (1) l'appareil ne doit pas produire de brouillage, et
- (2) l'utilisateur de l'appareil doit accepter tout brouillage radioélectrique subi, même si le brouillage est susceptible d'en compromettre le fonctionnement.

This equipment complies with ISED radiation exposure limits set forth for an uncontrolled environment. This equipment should be installed and operated with minimum distance 20cm between the radiator & your body.

Ce matériel est certifié pour une exposition de rayonnements ISED pour un environnement naturel. Ce matériel doit être installé et se faire avec une distance minimale de 20cm entre les radiateurs et les autresYour body shop.

One Year Limited Warranty

Supported by our professional R&D team and QC team, we provide One Year Warranty for materials and workmanship from the purchase date. Please note that the warranty does not cover damage caused by personal misuse or improper installation.

Please attach your Order ID and Name so that our dedicated customer service team can help you better.

