



otcaccess
C5
by
<bvk>
Installation manual



Content

Considerations before installing C5	3
List of conditions where C5 should not be installed:.....	3
What is C5	3
FCC Compliance Information	4
C5 ports	5
Preparing the Beauty Door	6
Preparing the safe door	9
Removal of the existing safe lock.....	9
Keypad installation.....	12
New lock installation.....	13
Installation of C5	14
Top box lock installation	15
Top box cables	17
ATM Safe box preparation	20

Considerations before installing C5

Before installing C5 to an ATM, visually inspect the ATM to detect any abnormalities that could negatively affect the regular functionality of C5.

In case you face any of the problems listed below quit the installation.

List of conditions where C5 should not be installed:

- Evidence of vandalism (broken bezel, open or broken fascia, unscrewed side panels, broken screws, damaged dispenser etc.)
- Problems in the opening space of the ATM
- If there is another operator working on the ATM.
- If the area doesn't meet minimum security requirements (remote location, insufficient staff surveillance)
- If there is any problem caused by a natural phenomenon (flood, energy cut, air conditioning failure etc.)

What is C5

C5 is a control unit. It gives the possible to drive and monitor the locks and door switches connected to it. Thanks to C5, the access to the ATM will be executed with OTCs (One time codes). Physical keys will not be longer needed.

The C5 is accompanied by a physical or digital keypad used to enter the One Time Codes. The electric or data driven locks connected to the C5 will be triggered when a valid OTC is entered to keypad.

The MiniSmart Keypad and the locks can be set up and powered with OTCaccess controllers only.

The MiniSmart Keypad power sources shall be 12 Vdc SELV with LPS or PS2.

FCC Compliance Information

OTCaccess C5 controller with FCC ID: 2A4FC2105

OTCaccess MiniSmart Bluetooth Keypad with FCC ID: 2A4FC2303

The devices comply with part 15 of the FCC Rules. Operation is subject to the following two conditions: (1) the devices may not cause harmful interference, and (2) the devices must accept any interference received, including interference that may cause undesired operation.

Note: The equipment has been tested and found to comply with the limits for a Class B digital device, pursuant to part 15 of the FCC Rules. These limits are designed to provide reasonable protection against harmful interference in a residential installation.

The equipment generates, uses, and can radiate radio frequency energy and, if not installed and used in accordance with the instructions, may cause harmful interference to radio communications. However, there is no guarantee that interference will not occur in a particular installation.

If the equipment does cause harmful interference to radio or television reception, which can be determined by turning the equipment off and on, the user is encouraged to try to correct the interference by one or more of the following measures:

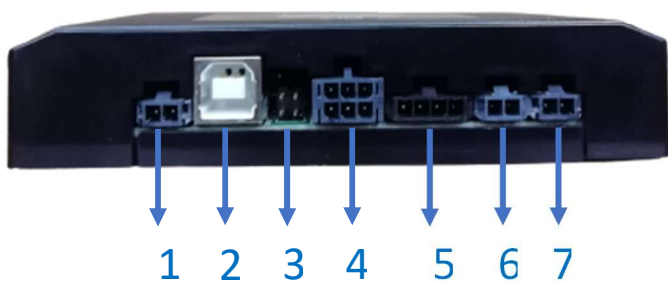
- Reorient or relocate the receiving antenna.
- Increase the separation between the equipment and receiver.
- Connect the equipment to an outlet on a circuit different from that to which the receiver is connected.
- Consult the dealer or an experienced radio/TV technician for help.

Changes or modifications to this product not authorized by BVK Technology could void the electromagnetic compatibility (EMC) and wireless compliance and negate your authority to operate the product.

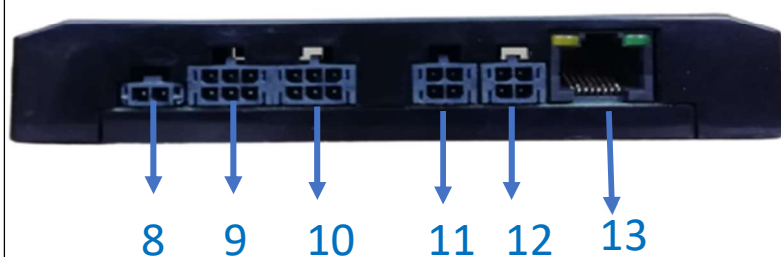
C5 ports



Bottom

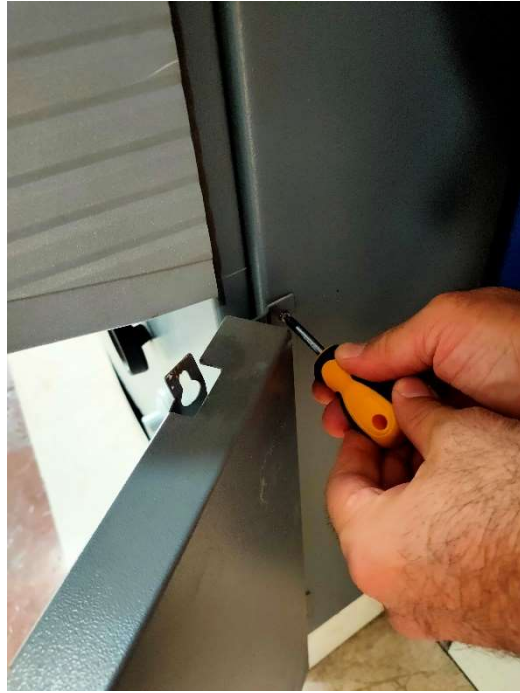


Top



1. Power	2. USB Type B	3. Analog Keypad	4. Keypad
5. Motor 1	6. Door Switch	7. Digital Output	8. Door switch
9. Motor 2	10. Motor 3	11. RS 232	12. RS485
13. RJ45 Ethernet			

Preparing the Beauty Door



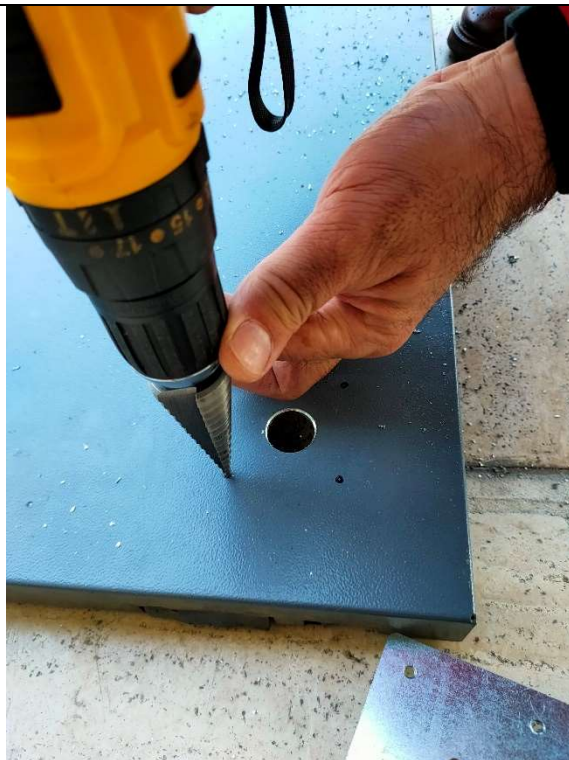
1. Remove the outer door



2. Bent the protruding parts with pliers so that the surface is plain



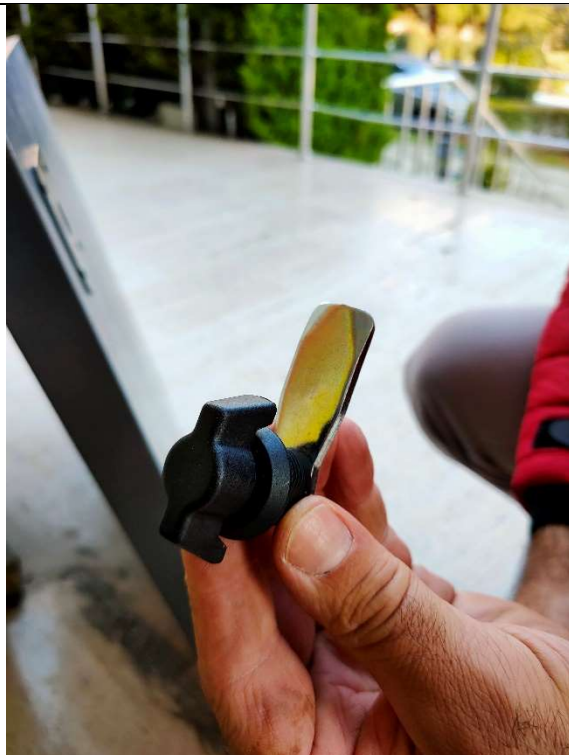
3. Put the hole template on the upper left corner of the door. Mark locations



4. With a drill bit, drill 4mm holes on edges and 20 mm hole in the middle



5. Clean the holes from inside



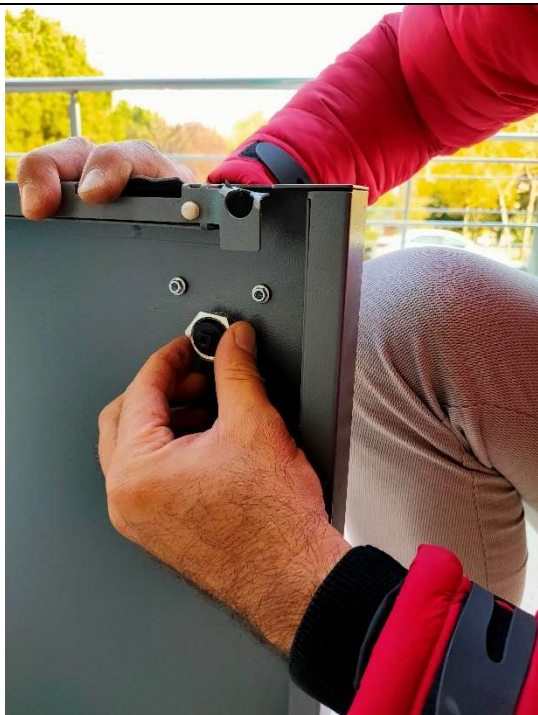
6. Prepare the lock with the plastic handle



7. Unscrew the lock



8. Fit the lock fixing plate on the front. Secure the plate with M4 nuts from the back. Insert the lock





9. Fix the lock in place with its nut from the back


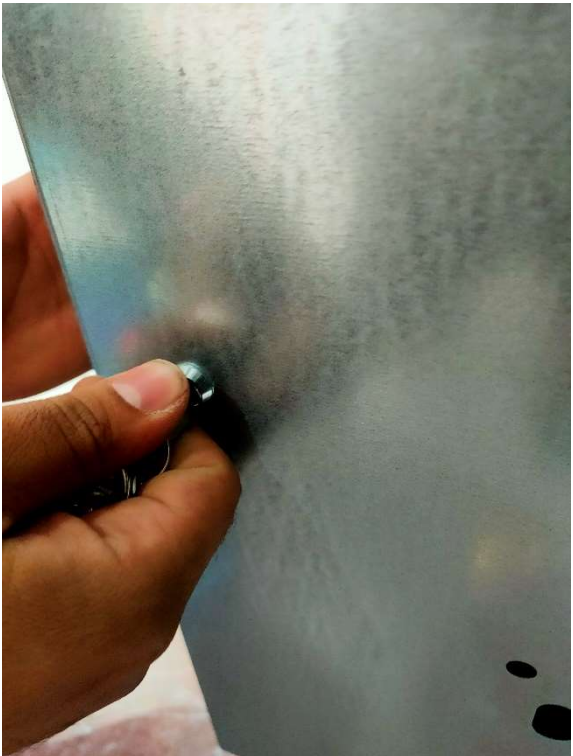


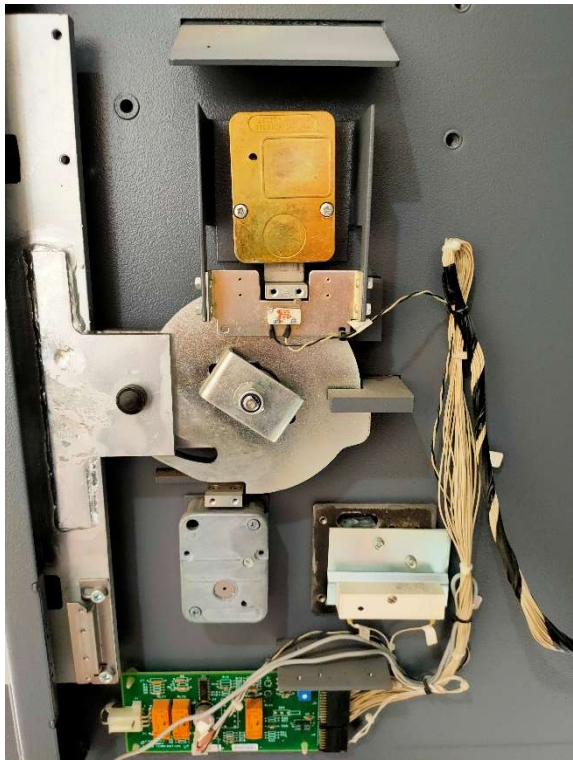
10. Place the hook of the lock as shown in the Picture and fix it with its screw

Preparing the safe door

	
<p>1. Unscrew the 2 metal pieces from the steel door of the safe</p>	<p>2. Install the new striker pieces instead. Fix them with two M4x10 RYSB bolts</p>

Removal of the existing safe lock

	
<p>1. Open the safe door. Unscrew the inner guard metal plate</p>	<p>2. If the metal plate is closed, unlock it with the key</p>



3. Remove the metal plate



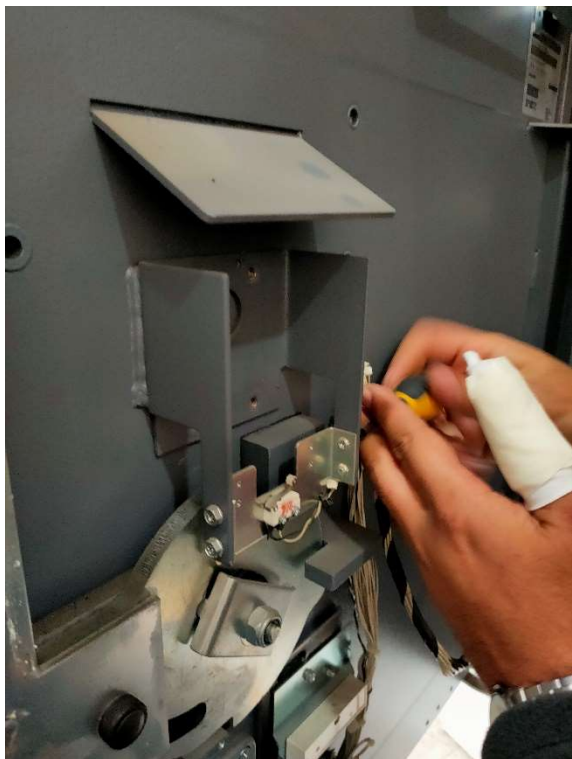
4. Unscrew the screws of the lock



5. After removing the cover, unscrew the existing lock.



6. Remove the lock



7. Remove the lower protective metal



8. It is not mandatory to use this piece of metal for future installation

Keypad installation



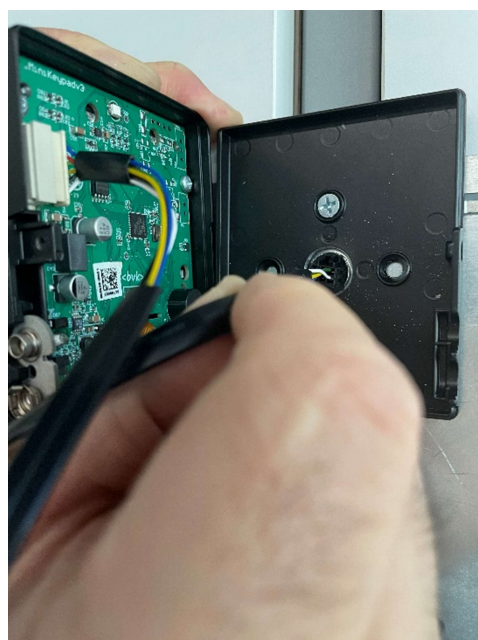
1. Remove the black round part on the safe door of the ATM



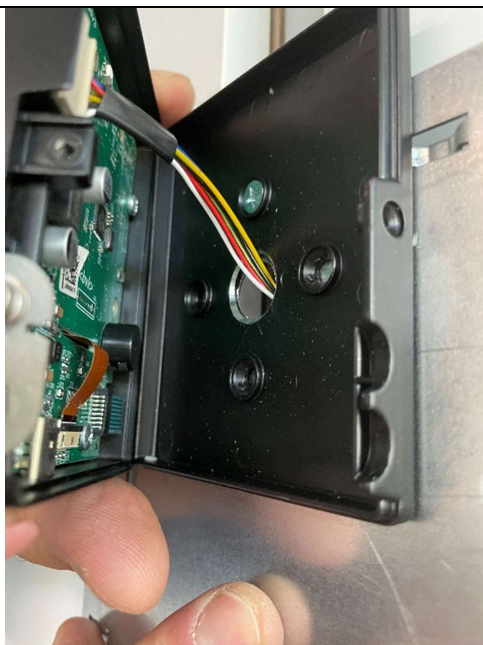
2. Remove the bolt on the right side of the keypad and keep it



3. Mount the bottom cover of the keypad to the safe door using the existing screw places (4 units M4x12 bolt)



4. Insert the cable from inside the keypad through the hole of the bottom cover of the keypad so that it gets to the other side of the door



5. Assemble the front and the back of the keypad

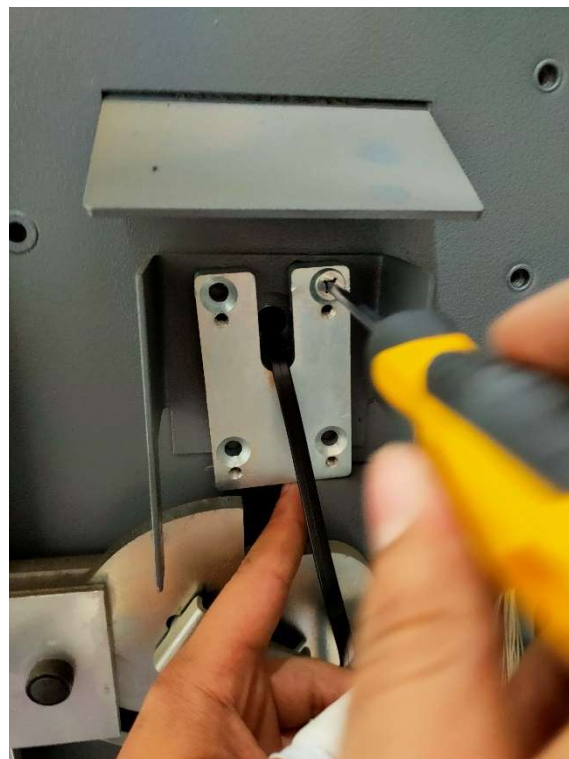


6. Screw the bolt you kept (check step 2) back firmly.

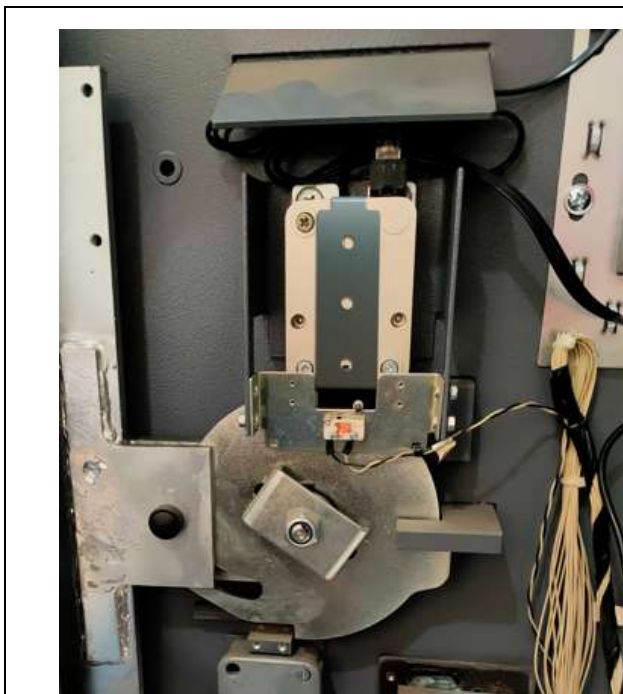
New lock installation



1. Take the lock lift plate



2. Install the lock lift plate in place of the old lock with 4x M6x20 YHB



3. Mount the new lock in place with 3xM6x30 YSB bolts.
You don't have to reassemble the lower metal part.
Attach BVK OTC19 cable to the lock
Note! Make sure you keep the protective metal plate of the lock until the end of the installation.

Installation of C5



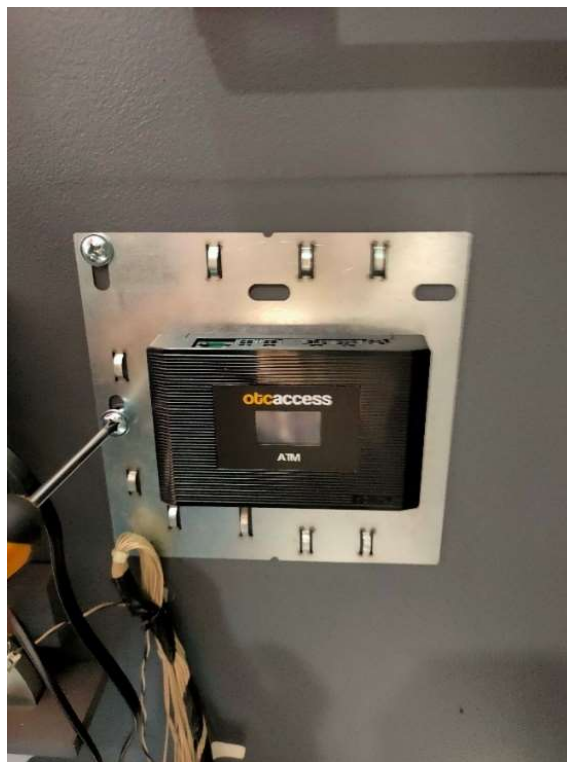
1. Take BVK anchoring plate and place C5 on it



2. Fix C5 to the plate with 4 x 2.9x20 YHB

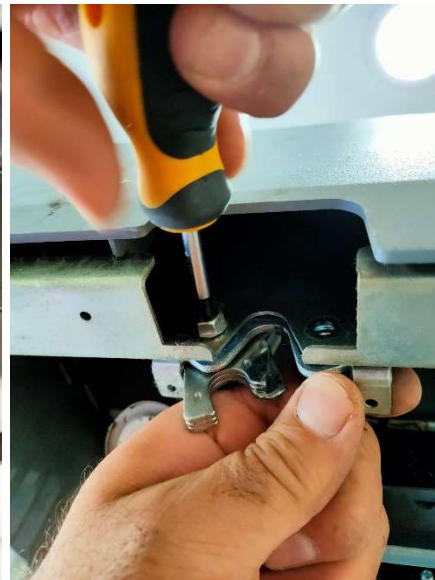


3. Place the plate so that it is on the right side of the lock



4. Set the plate in place with 2xM6x15 RYSB using the existing holes

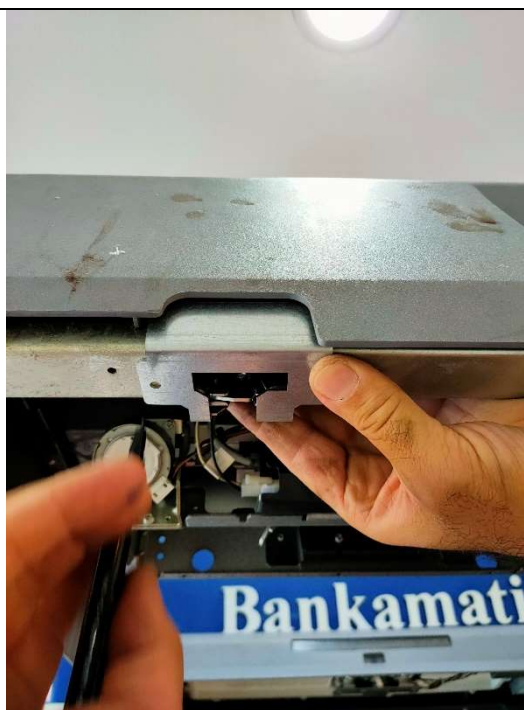
Top box lock installation



1. Remove the lock rings and bolts from the door



2. Pair the lock with its plate



3. Place the plate over where the old locks were and mark. Do it for both locks

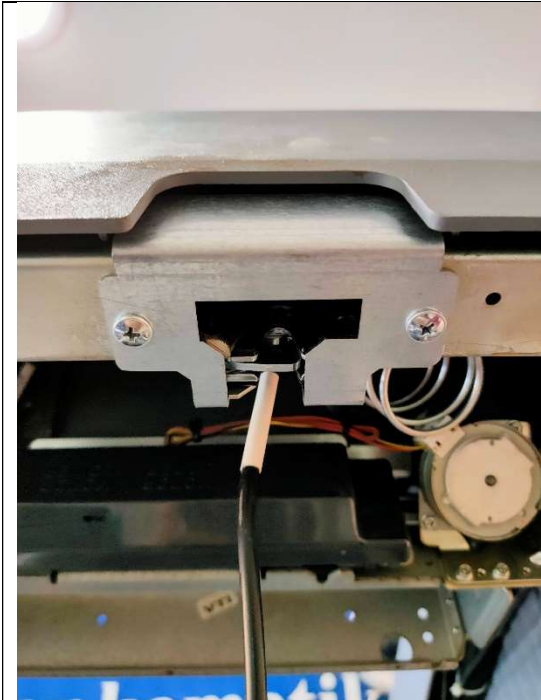


4. Drill 2 x 3 mm holes for both locks



5. Fix the plate with M4x12 RYSB bolts. Install the nut from the inside

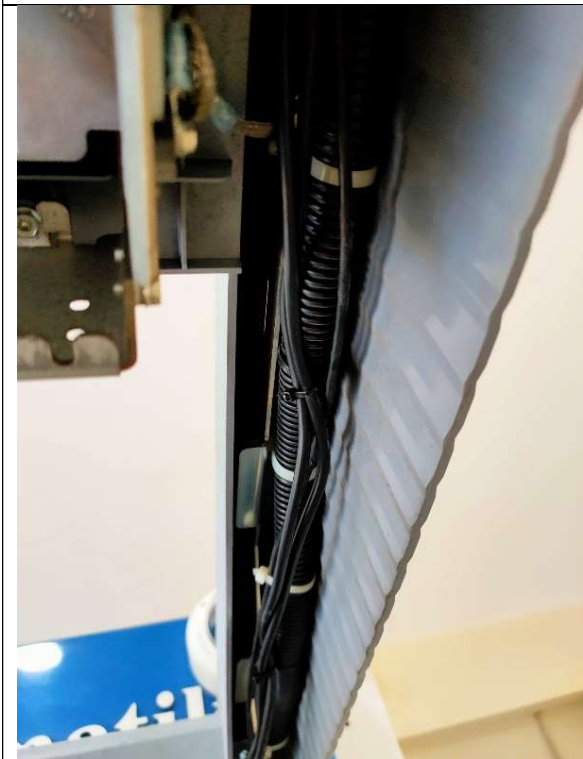
Top box cables



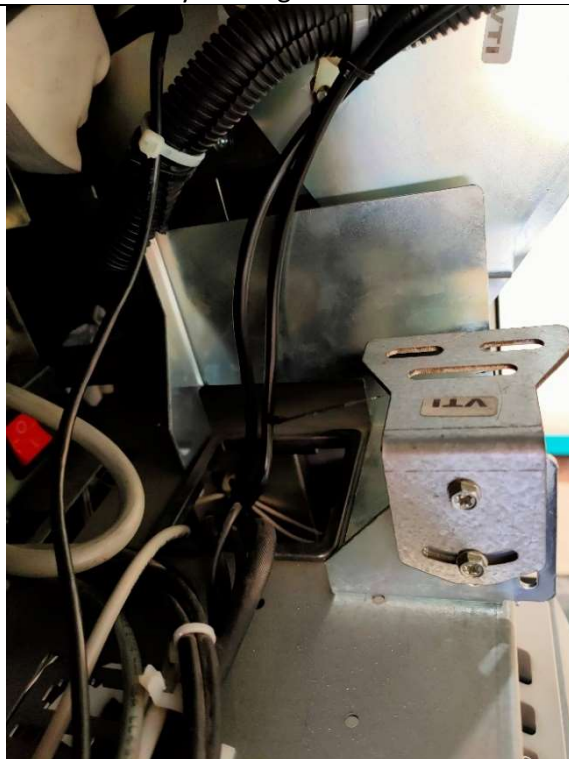
1. Lock attached to the front door



2. Already existing cables on the front door



3. Already existing cables on the front door



4. Already existing cables on the front door

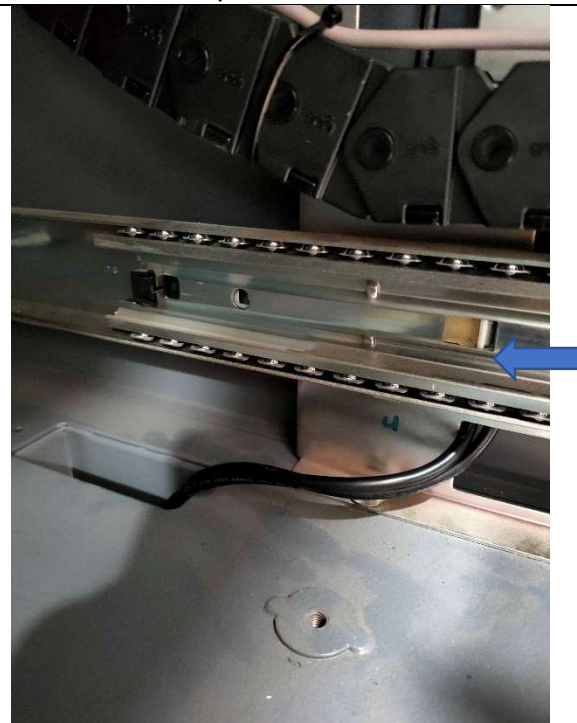


The way is shown by this stick

5. Cable way inside ATM



6. Cable way inside ATM



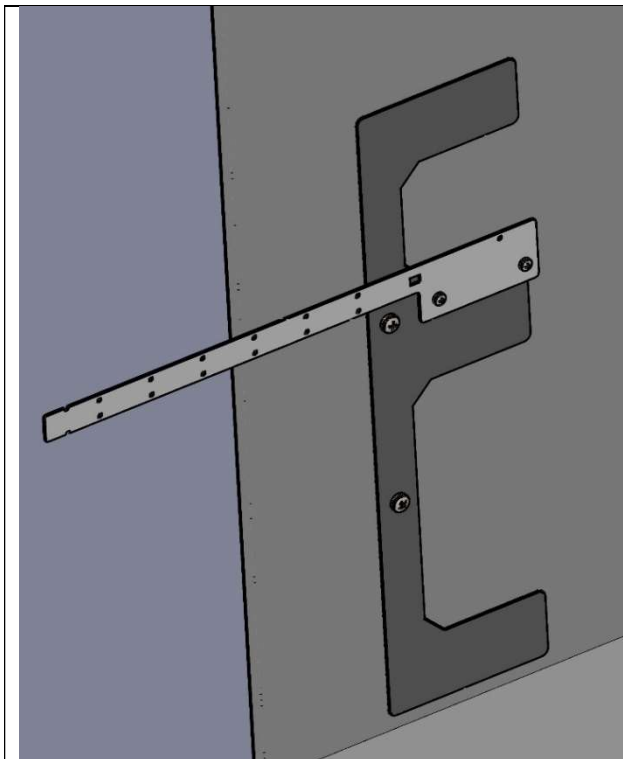
7. Cable way inside ATM





8. Cable way inside ATM

ATM Safe box preparation



1. Fix the cable protection plates into the already existing wholes on the left bottom wall of the safe



2. Fix the upper cabinet lock cables as shown in the photo to avoid damage



3. Place the cables as shown in the photo



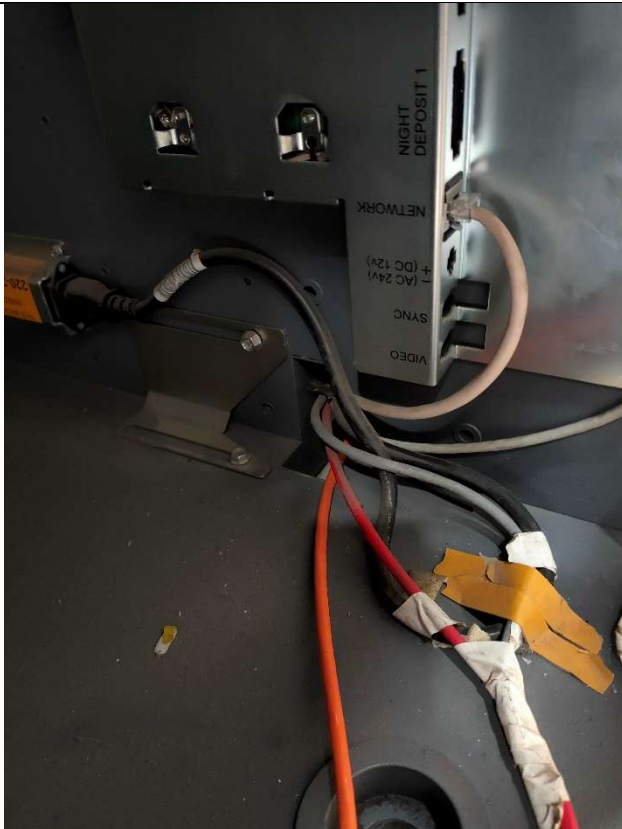
4. Connect the cables to the PoE adapter.



5. Cable passage

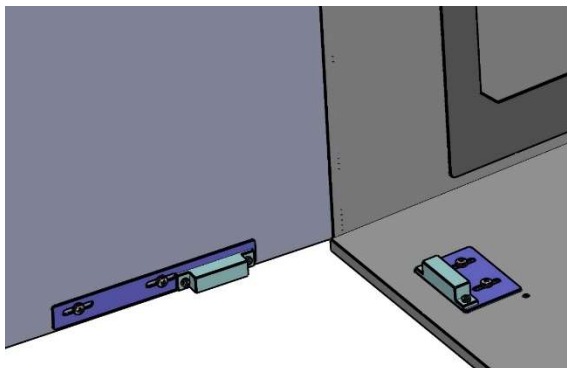


6. Cable passage



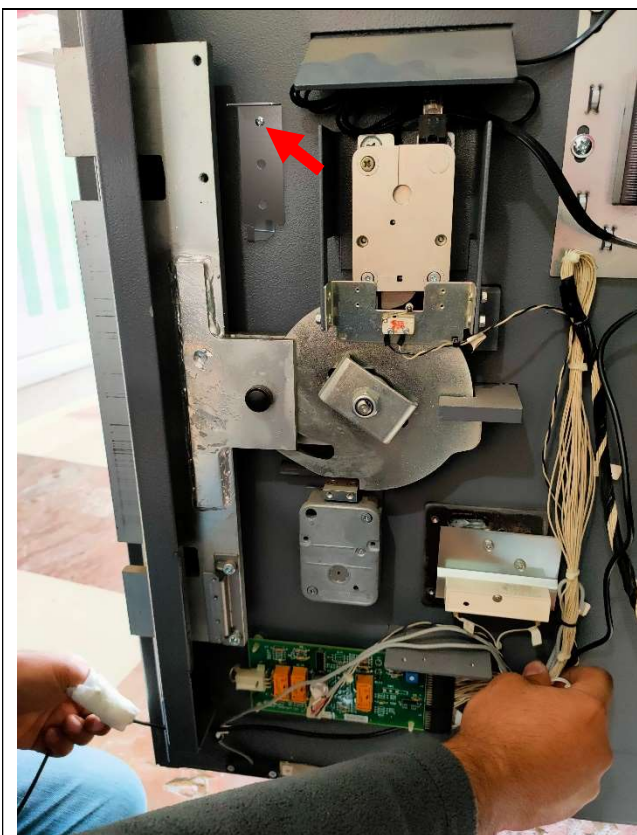
7. Cable passage

8. Mount the magnetic door switch plates into the existing holes on the door and floor of the safe with M4 bolts. Place the wired door switch on the door. Place its counterpart onto the floor. Fix the switches with M3x5 YSB bolts



9. Remove the protection metal plate from the lock





10. Screw the protection metal plate to the door of the ATM, you might need it in case you will need to remove the lock and store it lately.



11. Connect the cables to C5 referring to page 4 „C5 ports”

- Keypad cable – port No. 4
- Magnetic door switch cable – port No. 8
- Safe door lock – port No.10
- Ethernet (PoE) – port No.13
- 2 x top box lock – port No. 12 and 5