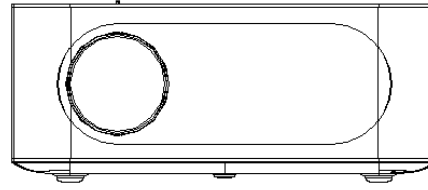


LOGO(METASEE)

1080P Full HD Projector Versatile Smart Projector

Quick Start Guide



P1

Important Safety Instructions

Please read and understand all instructions before using the projector.

Do not change any settings not described in this manual.

If physical injury, data loss, or damage is caused by failure to follow the instructions, the warranty does not apply.

Setup

- ① To reduce the risk of fire and/or electric shock, do not expose the projector to rain or moisture, or objects filled with liquids, such as vases, should not be placed on it.
- ② Do not place the projector in areas susceptible to excessive dust and dirt or near any appliance generating a strong magnetic field.
- ③ To prevent overheating, do not block the ventilation openings. Do not place the projector on the soft surface, such as sofa, pillow, to avoid blocking the cooling inlets.
- ④ Do not place the projector in a confined space and always leave enough space for ventilation around it.
- ⑤ Please protect the projector from direct sunlight heat, large temperature fluctuations and humidity.
- ⑥ When the projector is running for a long time and the surface becomes too hot, turn it off and unplug the power cord. Please wait for the projector to cool down before resuming operation.
- ⑦ Please handle the projector with care and avoid touching the lens.
- ⑧ Do not place heavy or sharp objects on the projector.
- ⑨ Do not disassemble to avoid electric shock.
- ⑩ Please use the attachments or accessories specified by the manufacturer.
- ⑪ Do not vibrate violently to avoid damage to internal components.
- ⑫ Do not allow children to handle the projector without supervision.
- ⑬ In the following conditions, a layer of moisture may appear inside the projector

which can lead to malfunctions;

- I . If the projector is moved from the cold to warm area.
- II. After a cold room heats up.
- III. Please seal the projector on a plastic bag before moving to another room to avoid any moisture when it is placed in a damp room, and wait for 1-2H before taking it out of the bag.

P2

Power Supply

- 1. Please power off the projector before removing the power supply from the socket.
- 2. Please protect the power cord from being stepped on or pinched, particularly at plug and receptacle.
- 3. To disconnect the AC power cord, please pull it out by grasping the plug. Never pull the cord itself to avoid damage.
- 4. Please unplug the projector if thunderstorm or unused for a long time.
- 5. Please remain easy to operate when using the power plug or an appliance coupler as the disconnect device. And before making or changing any connections, ensure that all devices are disconnected from the power sockets.
- 6. Do not touch the power cord or the power plug with wet hands.
- 7. When connecting the projector, please try to place the power cord at the same level as the machine. Do not leave the cord dangling to avoid poor contact or other problems.

Repairs

- 1. Please repair the projector by an authorized service center and do not make any repairs by yourself.
- 2. Please note that improper maintenance may damage to the projector.
- 3. Please refer all services to the qualified service personnel.

P3

Hearing Protection

Please set the volume at a safe level and do not listen at high volume for a long time to avoid hearing damage.

Cleaning

1. Please power off the projector and unplug the power cord before cleaning the surface.
2. Please use a soft, lint-free cloth and do not use liquid, gaseous or easily flammable cleansers, like sprays, abrasives, polishes and alcohol, to clean the projector.
3. Do not use any liquid cleaning agents to clean the lens to avoid damage to the protective coating on it.
4. Please wipe the surface gently and be careful not to scratch the surface.
5. Open the bottom cover and take out the air filter, gently remove the dust using a small vacuum designed for computers or a very soft brush, such as a paintbrush.
6. Please use the lens cleaning paper to clean the lens of this projector.

Cautions

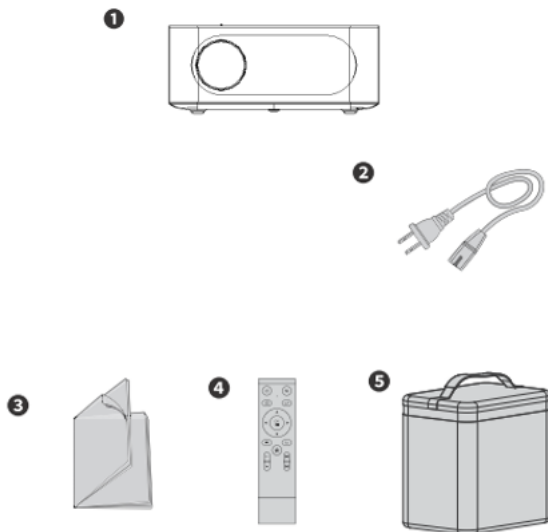
1. Possibly hazardous optical radiation emitted from the projector.
2. Do not stare at the beam to avoid the bright light hurt your eyes.

P4

Important Safety Instructions

What's in the Box

1. The projector
2. Power cord
3. Quick start guide
4. Remote control
5. Pouch



NOTE

Lamp life may vary depend on environment conditions and usage.
Actual features and specifications of product are subject to change without notice.
Some of the accessories may vary from region to region.
If any questions, please consult the dealer for detailed information.

P5

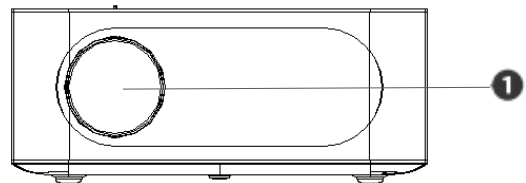
Overview

Front View

1. Lens

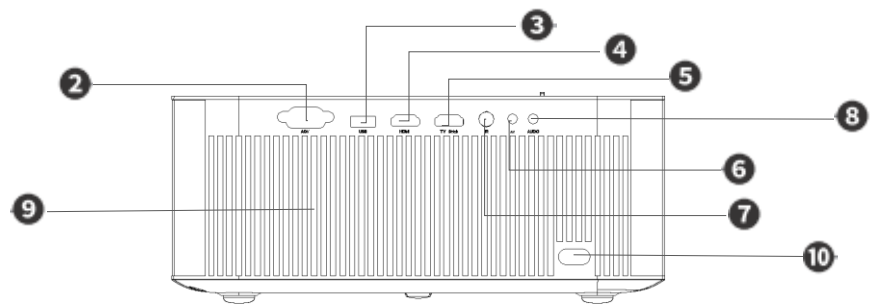
Do not look directly into the lens.

Please remove the lens cover before use.



Rear View

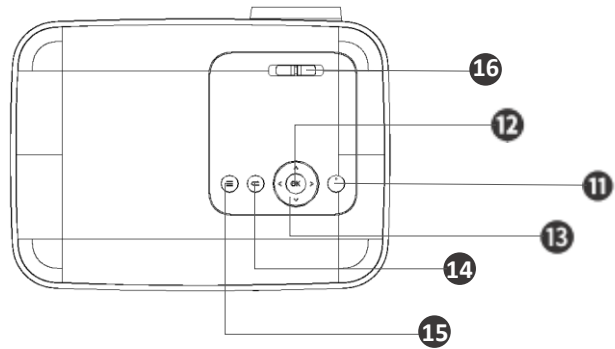
2. VGA port
3. USB port
4. HDMI port
5. TV stick port
6. IR receiver
7. AV port
8. Audio output
9. Heat sink
10. DC in



P6

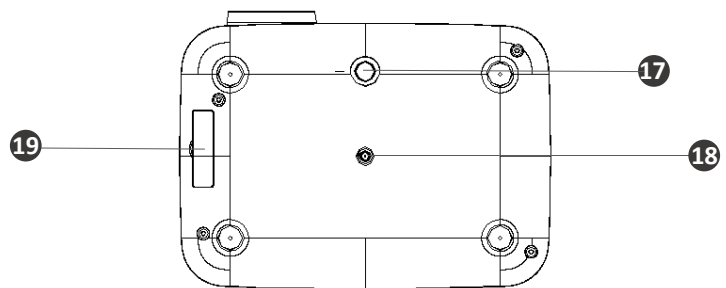
Top View

- 11.Power button
- 12.OK button
- 13.Arrow buttons
- 14.Back button
- 15.Menu
- 16.Manual keystone correction



Bottom View

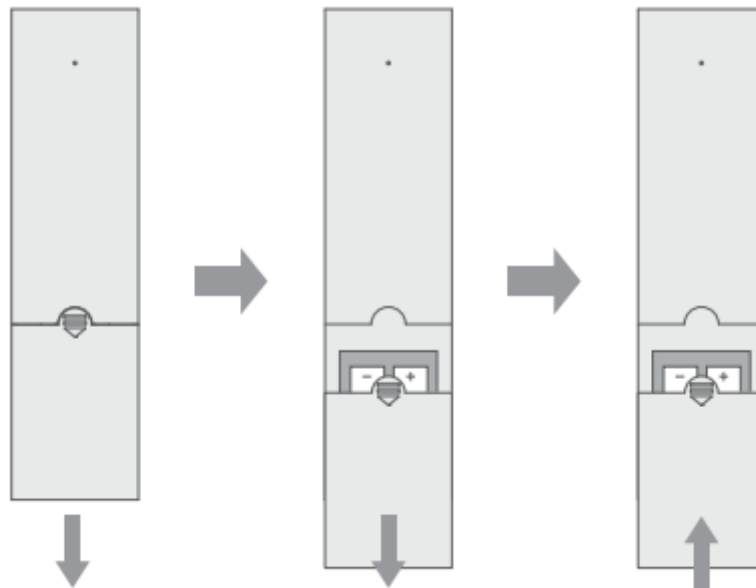
- 17.Adjustable screw foot
- 18.1/4" screw hole for ceiling
- 19.Detachable air filter



P7

Prepare the Remote Control

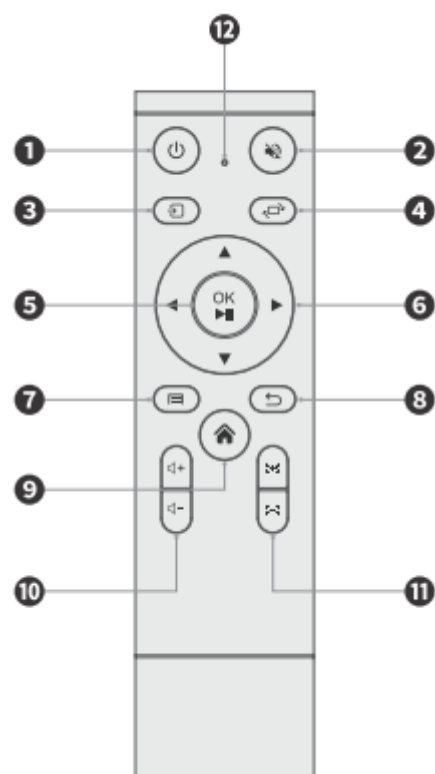
Please install two AAA batteries(not included) in the remote control before use.



1. Please remove the battery back cover of remote control first.
2. Slide to open the cover to install or replace the batteries (please note to match the polarity(+/-) indicated) and close the cover.

Remote Control

1. ON/OFF
2. Mute
3. Input source
4. Flip
5. OK/Pause
6. Arrow buttons
7. Menu
8. Back
9. Home
10. Volume \pm



- 11. Focus \pm
- 12. Indicator

P8

Getting Start

Placement

Please place the projector on a flat and stable foundation squarely in front of the projection screen.

The projection screen shall be white and flat for best viewing.

The distance between the projector and screen should be the minimum of 0.93m(30 inches) and the best of 2.63m(85 inches).

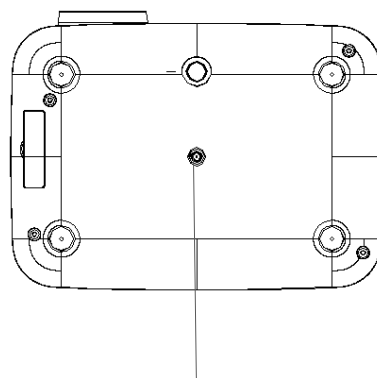
(0.93~3.72m / 30''~120'')

NOTE

You can also install the projector in the following ways: from the rear desktop, front ceiling or rear ceiling.

Please make sure to select the correct Projector Direction options in the menu settings.

Please ensure the ceiling installation is safe and stable to avoid damage to the machine or accidental injury.



Please make sure to use 1/4'' screws when ceiling.

P9

Projection Distance

The distance between the projector and projection screen determines the approximate size of the image.

The table below shows approximately how far to place the projector from the screen based on the size of the image.

Screen size(length x width)	Projection distance(m)
30 inches	0.93m
60 inches	1.86m
90 inches	2.79m
100 inches	3.10m
120 inches	3.72m

Power On

1. Connect the projector to socket outlet by using the provided power cord.
2. Press the power button on the projector or the remote control.
3. Turn the projector towards a flat and white projection surface.
4. To focus the image by remote control.
5. Adjust manually the image to square by the keystone correction button of the projector.

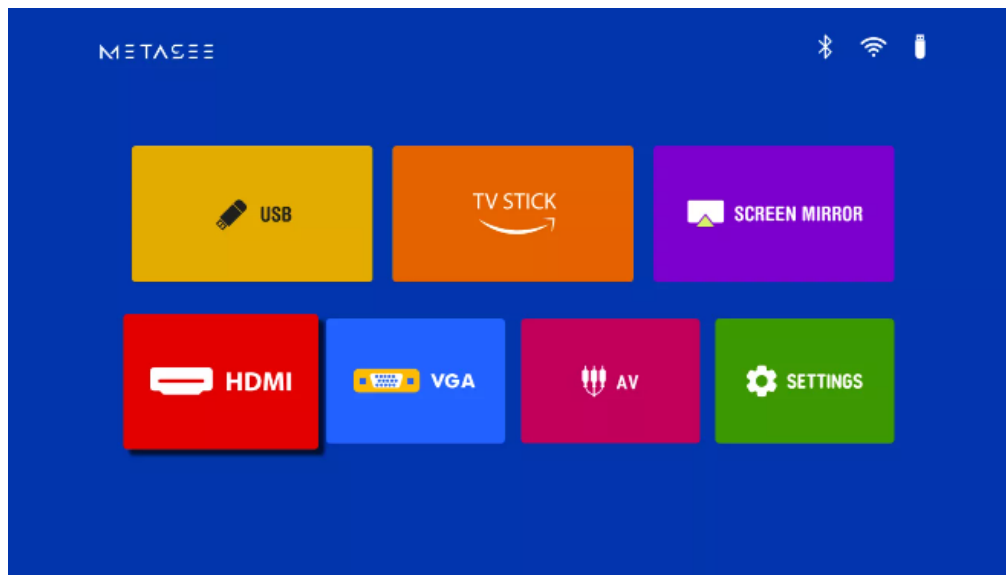
P10

Using the Projector

Play from HDMI Devices

The projector can be connected to various HDMI devices such as TV box, TV stick, DVD player, gaming console, etc.

1. Connect it to an HDMI playback device with the HDMI cable(not included).
2. Enter to the “HDMI” input source on the home page, and then operate successfully.



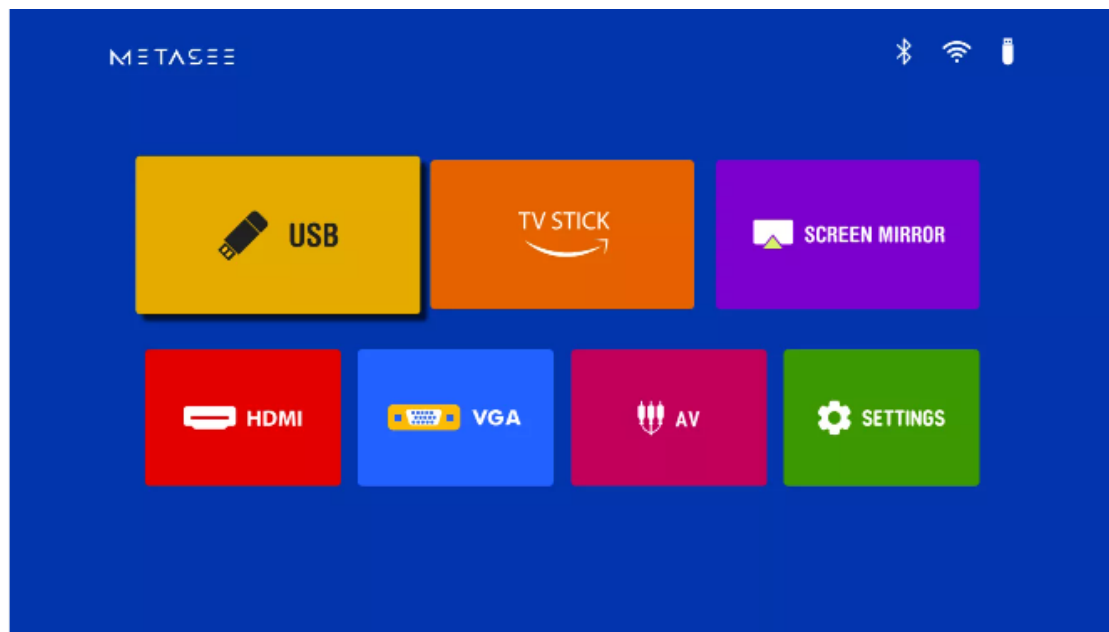
NOTE

There are two HDMI port on the projector and one is special for playing TV stick. And you can enter the “TV STICK” mode directly on the home page.

Play from USB Devices

With the projector, you can enjoy music, video or pictures that are stored in the USB drive.

1. Insert the U drive into the USB socket.
2. Enter to the “USB” input source on the home page, and then to play something what you want.

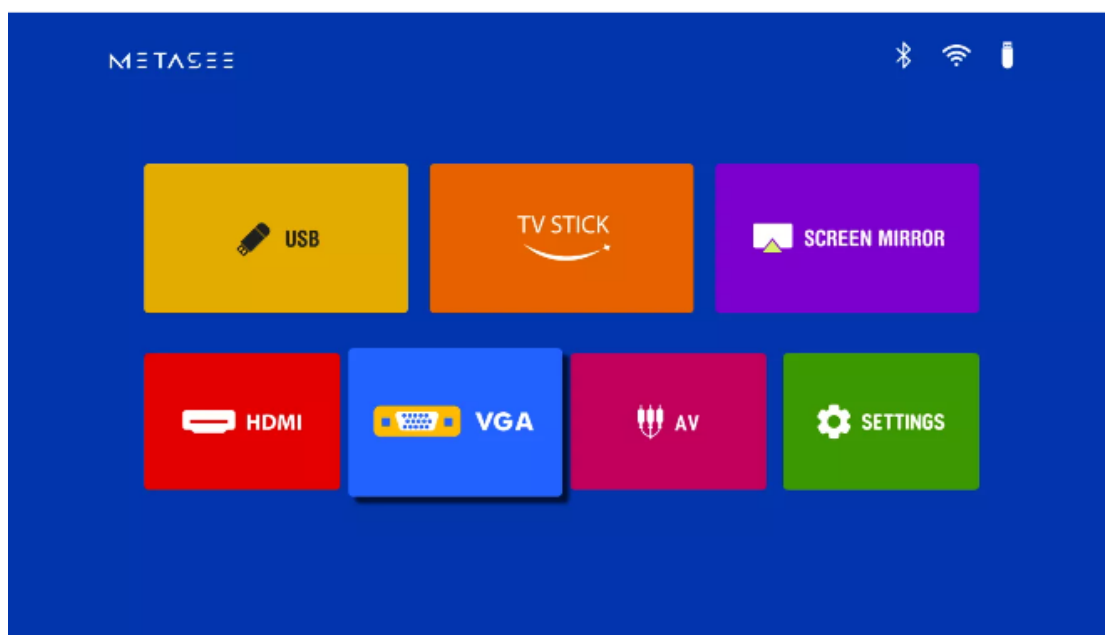


P11

Play from VGA Devices

With the VGA port, the projector can connect with TV or PC etc.

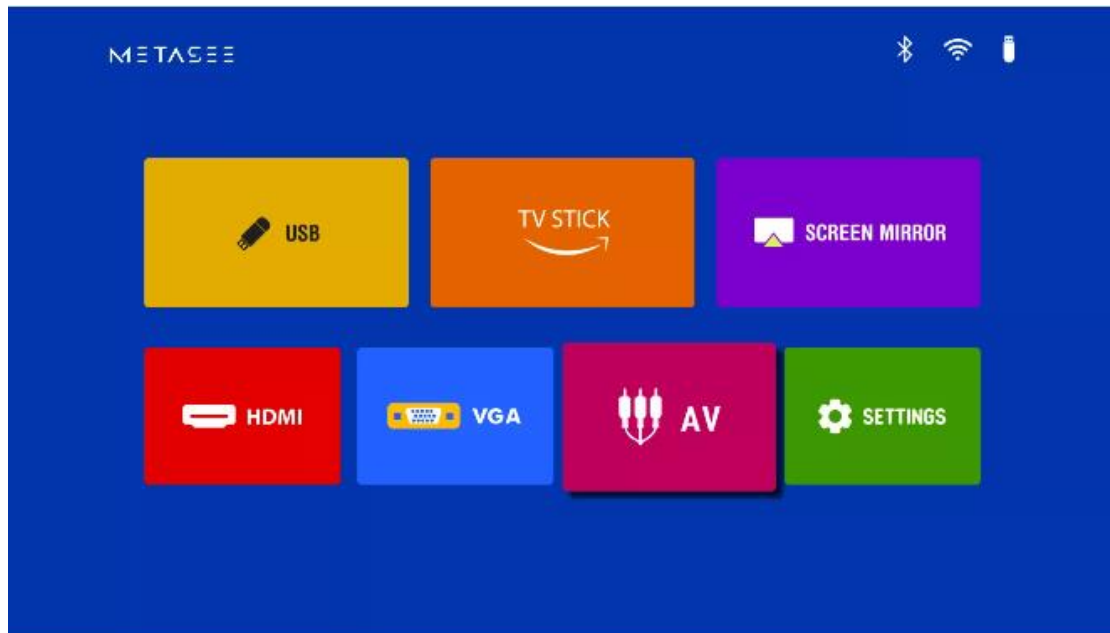
1. Connect it to an VGA playback device with the VGA cable(not included).
2. Enter to the “VGA” input source on the home page, and then operate successfully.



Play from AV Devices

With the AV port, the projector can connect with DVD or Karaoke Player etc.

3. Connect it to an AV playback device with the AV cable(not included).
4. Enter to the “AV” input source on the home page, and then operate successfully.



Play from External Devices

1. The projector can also connect to external devices, including headphones and speakers.
2. Please note that the built-in speakers will be disabled when connect to external speakers.
3. Please use a 3.5mm audio cable to connect your headphones or external speakers.
4. Connect the cable to the AUDIO out port on the projector, you will hear from the external devices.

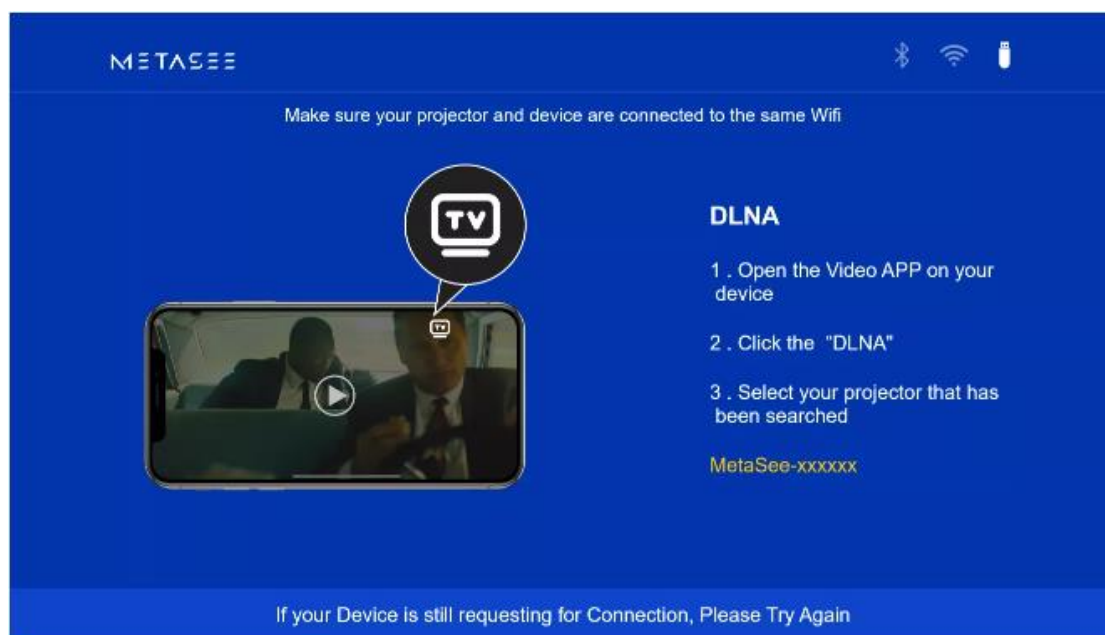
NOTE

Before connecting the headphones, please turn down the volume to avoid damaging your ears.

P12

DLNA

1. Enter the "SCREEN MIRROR" on the home menu and select the "DLNA" mode. When the page is ready, you can find "XXX Connected" on the projection screen.
2. Open the video APP on your phone and play the video.
3. Find and click the "TV" icon(DLNA function) to scan the devices.
4. Connect the local device "MetaSee-xxxxxx" that has been searched and sync the video directly.



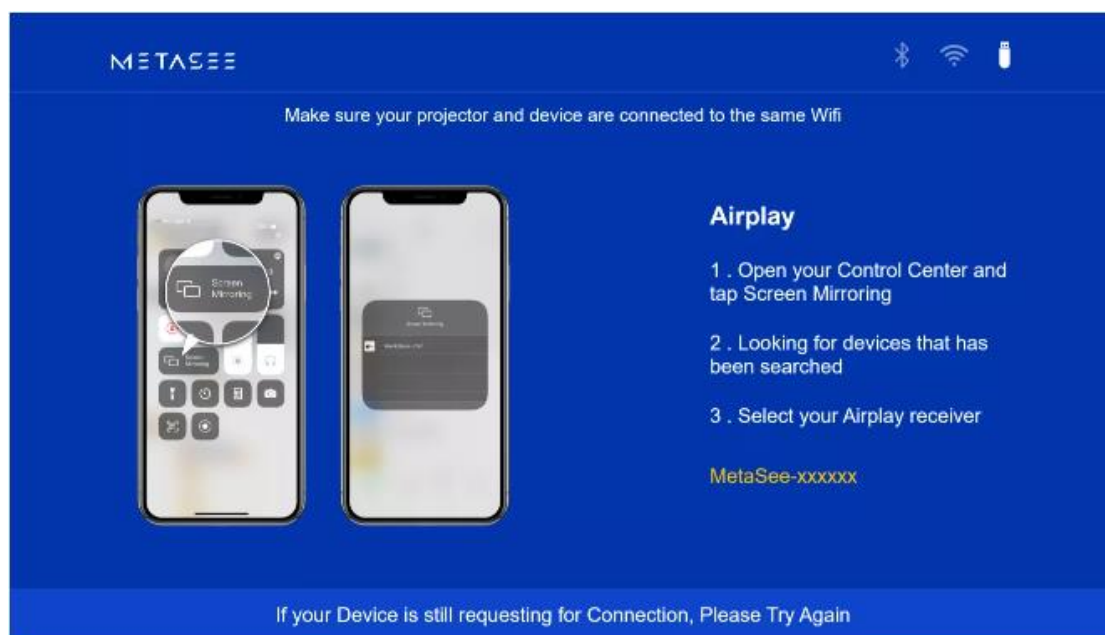
NOTE

1. Please make sure that the projector and your phone connected to the same network first.
2. Please note that there are not all the mobile phone and APPs support the "DLNA" function.
3. Please wait for the DLNA page to be ready.
4. If your device is still requesting for connection, please try again.

P13

Airplay(For iOS Devices)

1. Enter the "SCREEN MIRROR" on the home menu and select the "Airplay" mode. When the page is ready, you can find "XXX Connected" on the projection screen.
2. Click "Screen Mirroring" of the control center on your phone and scan the devices.
3. Connect the your Airplay receiver "MetaSee-xxxxxx" that has been searched and sync the screen directly.



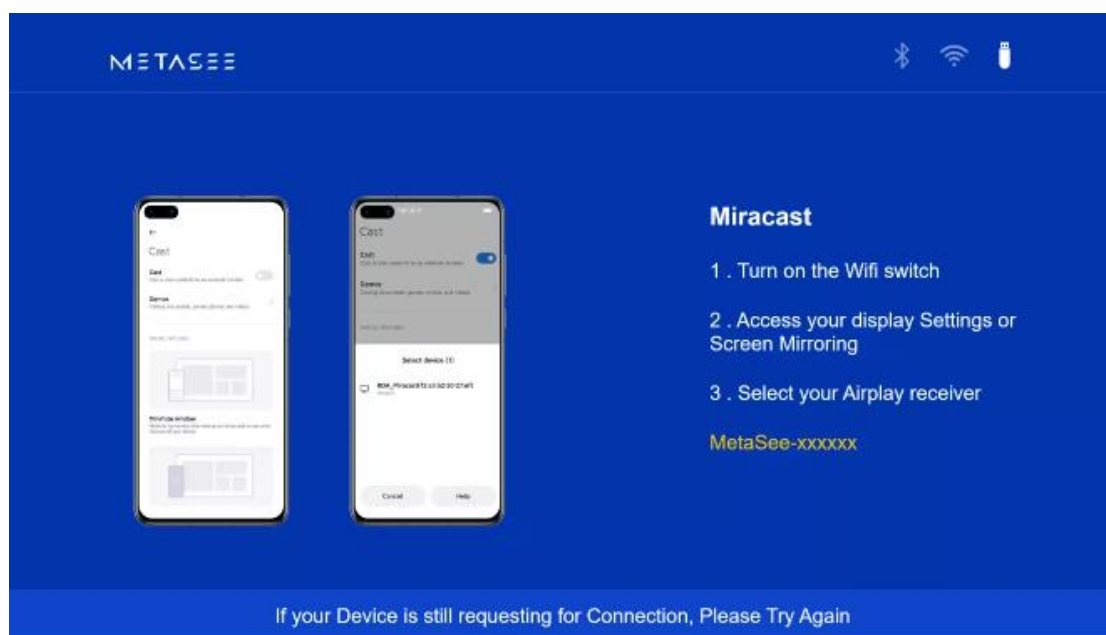
NOTE

1. Please make sure that the projector and your phone connected to the same network first.
2. Please wait for the Airplay page to be ready.
3. If your device is still requesting for connection, please try again.

P14

Miracast(For Android Devices)

1. Enter the "SCREEN MIRROR" on the home menu and select the "Miracast" mode. When the page is ready, you may find "Ready for Connection" on the projection screen.
2. Turn on the WIFI switch and access screen cast or multi-screen on your display settings.
3. Connect the your Miracast receiver "MetaSee-xxxxxx" that has been searched and sync the screen directly.



NOTE

1. Android devices must have built-in wireless projection or multi-screen function.
2. Please confirm to enter the Android mode(Miracast) before mirroring.
3. Please wait for the Miracast page to be ready.
4. If your device is still requesting for connection, please try again.

P15

Specifications

NOTE

Please note that the specification and design may subject to change without notice.

Model: MV1

Power consumption: <100W

Display technology: LCD+LED

Native resolution: 1920 x 1080P

Light source: RGB LED

Projection size: about 30-120 inches

Throw ratio: 1.4:1

Throw distance: about 0.93m to 3.72m

Speakers: 5W x 1

Batteries: AAA batteries x 2(for remote control)

Dimensions(W x L x H): 264mm x 192.18mm x 110.5mm

Net Weight: 2.79KG

Max Operating Temperature: 35 °C

Troubleshooting

1. Cannot turn on the projector with remote control?

Make sure that the projector is connected to the power supply, then power on and make the remote aim the front or back of the projector.

2. The remote control doesn't work?

Make sure the batteries are already installed in the remote control or replaced.

Make the remote aim the front or back of the projector.

3. Blurred image?

Please adjust the clarity of the screen by the focus button of the remote control.

4. Distorted image?

Please slide the button of manual keystone correction on the projector and adjust the projection image until being square.

5. Rotate projection image?

Enter the [SETTINGS] > [Projector Direction] and switch to a correct state.

NOTE



This product complies with the requirements of the European Community.
This product can be used across EU member states.



This product is designed and manufactured with high quality materials and components, which can be recycled and reused.



This symbol indicates the product must not be discarded as household waste, and should be delivered to an appropriate collection facility for recycling. Proper disposal and recycling help protect natural resources, human health and the environment.



For more information on disposal and recycling of this product, please contact your local municipality, disposal service, or the shop you bought it.

P16

FCC Notice

This equipment has been tested and found to comply with the limits for a Class B digital device, pursuant to part 15 of the FCC Rules. These limits are designed to provide reasonable protection against harmful interference in a residential installation. This equipment generates, uses and can radiate radio frequency energy and, if not installed and used in accordance with the instructions, may cause harmful interference to radio communications. However, there is no guarantee that interference will not occur in a particular installation. If this equipment does cause harmful interference to radio or television reception, which can be determined by turning the equipment off and on, the user is encouraged to try to correct the interference by one or more of the following measures:

- Reorient or relocate the receiving antenna.
- Increase the separation between the equipment and receiver.
- Connect the equipment into an outlet on a circuit different from that to which the receiver is connected.
- Consult the dealer or an experienced radio/TV technician for help.
-

Caution: Any changes or modifications to this device not explicitly approved by manufacturer could void your authority to operate this equipment.

This device complies with part 15 of the FCC Rules. Operation is subject to the following two conditions: (1) This device may not cause harmful interference, and (2) this device must accept any interference received, including interference that may cause undesired operation.

RF Exposure Information

This equipment complies with FCC radiation exposure limits set forth for an uncontrolled environment. This equipment should be installed and operated with minimum distance 20cm between the radiator and your body.

Manufacturer: ENGINE TECHNOLOGY LIMITED

Address: HANGTIAN NAN ROAD, CHENGDU ECONOMIC TECHNOLOGY ZONE
CN/CHENGDU SICHUAN

NOTE

1. All connections to other computing devices must be made using shielded cables to maintain compliance with FCC regulations.
2. Any provided shipping labels must be used within 20 days from the date they're issued by support.
3. 30 Day Money Back Guarantee for Any Reason.
You may return your undamaged product and packaging within 30 days of purchase to receive a FULL REFUND for any reason.
If the reason for return is not related to quality, the customer must pay for the return shipping fee.
4. 12 Months Warranty for Quality Related Issues.
The products are warrantied to be free from material and workmanship defects for 12 months from the date of purchase.
Within this period, your seller will provide a replacement and cover any return shipping costs for products that fall in normal use.

The manual is subject to change without any prior notice.

OSD options and pictures shown in this document may differ slightly from your product.

Please read the instructions carefully before using the product and keep safely for reference.