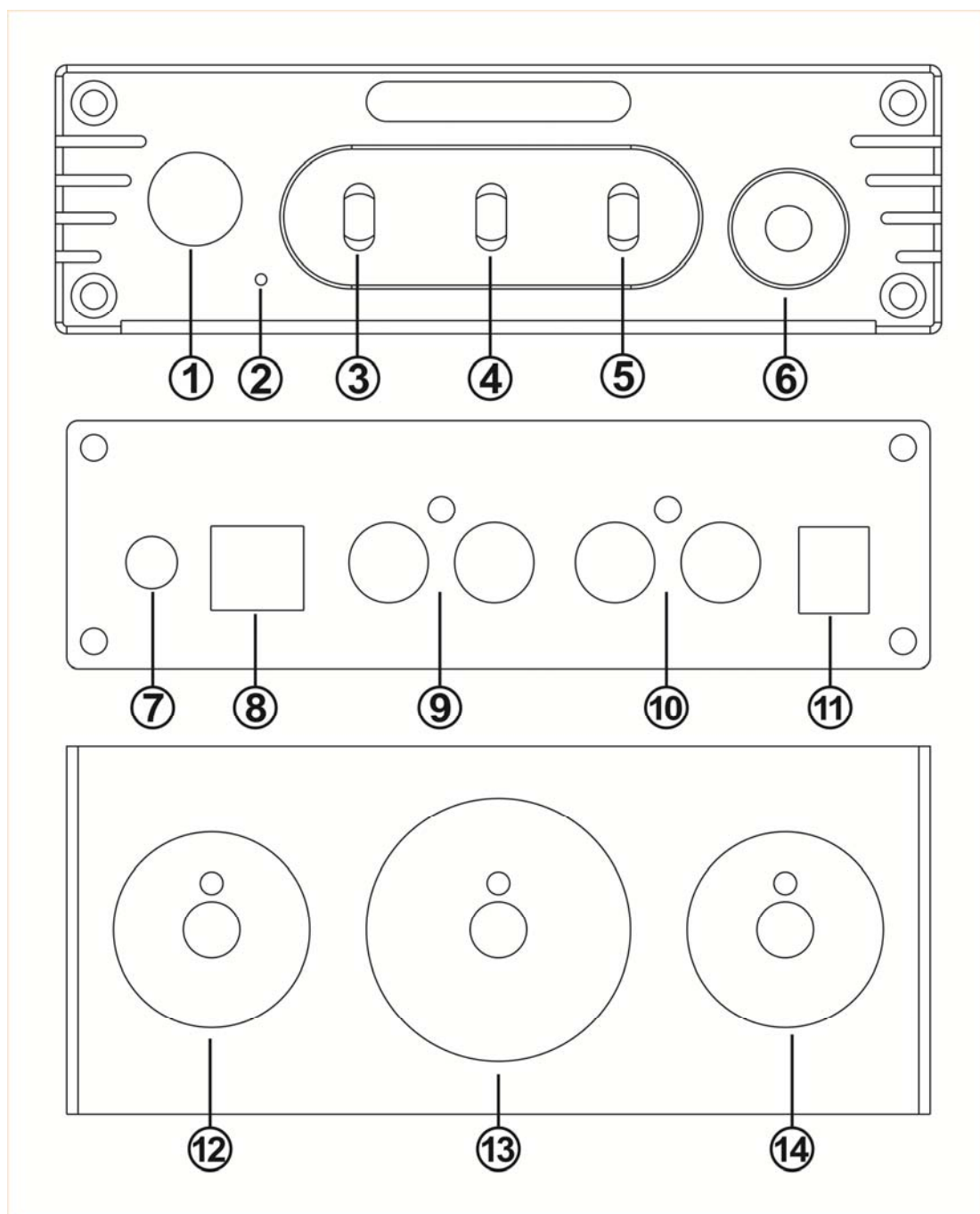


非常感谢阁下购买本公司产品!在使用产品前,请阁下认真阅读本说明书内容。

蓝牙版面板说明:



- ①开关机键
- ②电源指示灯
- ③蓝牙/PC-USB/RCA 输入切换开关
- ④TONE 开关(关闭状态下高低音调旋钮无效)
- ⑤电子管装饰灯颜色选择开关(可通过开关变换电子管装饰灯颜色或关闭)
- ⑥耳机放大输出接口(插耳机 RCA 输出自动断开)

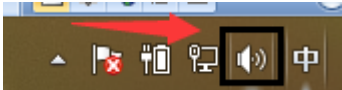
- ⑦蓝牙天线
- ⑧PC-USB 输入接口
- ⑨RCA 输入接口（比如 CD、DAC 解码器、手机、电视等，红色接右声道输入，白色接左声道输入）
- ⑩音源输出接口（比如功放、耳放、有源音箱等，红色接右声道，白色左声道）
- ⑪电源接口（DC 电源不得超出 12V）
- ⑫低音旋钮（顺时针低音增多，逆时针低音减少）
- ⑬音量旋钮（顺时针总音量增加，逆时针总音量减小）
- ⑭高音旋钮（顺时针高音增多，逆时针高音减少）

操作步骤：

- 1. 确定 VOL 旋钮为最小状态。
- 2. 将随机配的电子管按方向装入电子管座（电子管不分左右，安装电子管前检查下引脚有没有变形，变形可用手拨正）。
- 3. 将需要使用的音源接到音源输入接口（连接蓝牙时需要将输入选择开关拨到蓝牙输入）
- 4. 将需要外接的后级设备接到音源输出接口。
- 5. 接上 DC12V 电源。
- 6. 按下开关机键开启电源。
- 7. 顺时针旋转旋钮选择需要的音量大小及高低音量。

PC-USB 操作说明：

- 1. 使用出厂配置的 USB 线接上机器后面板的 PC-USB 接口（USB 可支持热拔插）
- 2. 按输入信号选择键选择 USB 输入。
- 3. 如下图在 PC 端右下角找到带有喇叭符号的图标



- 4. 点击右键弹出对话框点击《选择播放设备》
- 5. 弹出对话框选择 PC 识别到的播放设备（本机器 USB 为自动识别, 免手工安装驱动）
- 6. 点击确认识别到的数字输出。

规格参数：

| | | | |
|----------------|------------------------|------|--------------|
| PC-USB 支持输入采样率 | 192K/24Bit | 失真 | 0.1% |
| PC-USB 支持操作系统 | XP/W7/W8/W10/MAC/linux | 蓝牙版本 | 5.0 |
| 耳机匹配阻抗 | 32-300Ω | 信噪比 | ≥98dB |
| 耳放最大输出功率 | 160mW 32Ω 负载 | 工作电压 | DC12V |
| 高低音调整范围 | ±6dB | 裸机尺寸 | 180*118*36MM |
| RCA 输出电平 | 2.3V | 裸机重量 | 0.62kg |
| 频率响应 | 20Hz-20kHz (±3dB) | 包装尺寸 | 240*210*60mm |

常见问题：

问：我所有线都连接好了，但是没有声音输出？

答：1. 检查 POWER 指示灯是否亮，如果没亮则拨动开关键开机。按开机键后指示灯依然不亮，此时你可以找一个同等电压输出的（必须是 12V）再测试。

2. 如指示灯亮，检查 VOL 旋钮是否在最小的状态，如在最小状态顺时针旋转则正常

3. 如以上两点都正常，检查输入音源的播放设备是否暂停了、静音了或者音量处于最小状态。

问：为什么声音出现破音？

答：这款产品为前级产品，也是有放大作用的，如果后级设备音量调到最大，而前级也调到最大，那就很容易失真，此时你只需要将前级或后级音量调小一些就可以。

问：为什么机器音量不变，而接入不同的音源（如先接 CD 再换成手机）声音大小却不一样了？

答：不同的播放设备输出电信号幅值是不一样的，比如手机通常是 0.35MV，而 CD 则是 1V。自然声音大小是不一样的。

问：为什么喇叭出现很大的电流声？

答：如你使用的不是原厂标配的电源，请更换电源后再测试。市面很多电源存在纹波干扰系数大则会造成很大电流声。

问：为什么我插上输入线后不接播放音源，音箱会有很大的嗡嗡声？

答：使用了不带屏蔽的信号线空载时，会有干扰信号进入到功放进行放大，如你讨厌这个声音建议你更换带屏蔽的信号线，或者拔掉信号线。

问：为什么胆前级买回来开始听声音很硬，三频不是很清晰，但是工作 1 天后就正常了？

答：电子管是一个很敏感的器件，温度一般要达到一个程度才能发挥最好的效果，所以一般开机预热半小时左右后声音就很自然。

问：我可以更换电子管升级吗？

答：可以的，目前我们出厂有测试匹配过 6J1/6J4/GE5654/6AK5/6*1n, 可以直接替换的，不同电子管声音会有很大区别。

问：我更换电子管可以不断电直接拔插吗？

答：不可以，这样非常容易把电子管烧坏，因为机器内部是高压工作的，热插拔电子管烧坏还有可能损坏机器。

问：这款机器可以接留声机/电唱机吗？

答：目前这款还不支持留声机/电唱机信号输入，因为留声机/电唱机输出电信号幅值很小，需要增加唱机放大器。

问：为什么 PC-USB 接上 PC 后没有声音？

答：先按 PC-USB 操作使用步骤确认是否选择了数字播放输出，如果选择了依然没有声音，可以重启电脑再重复一次操作就可以了。

问：为什么我所线都插好了，但是 RCA 模拟输出没有声音？

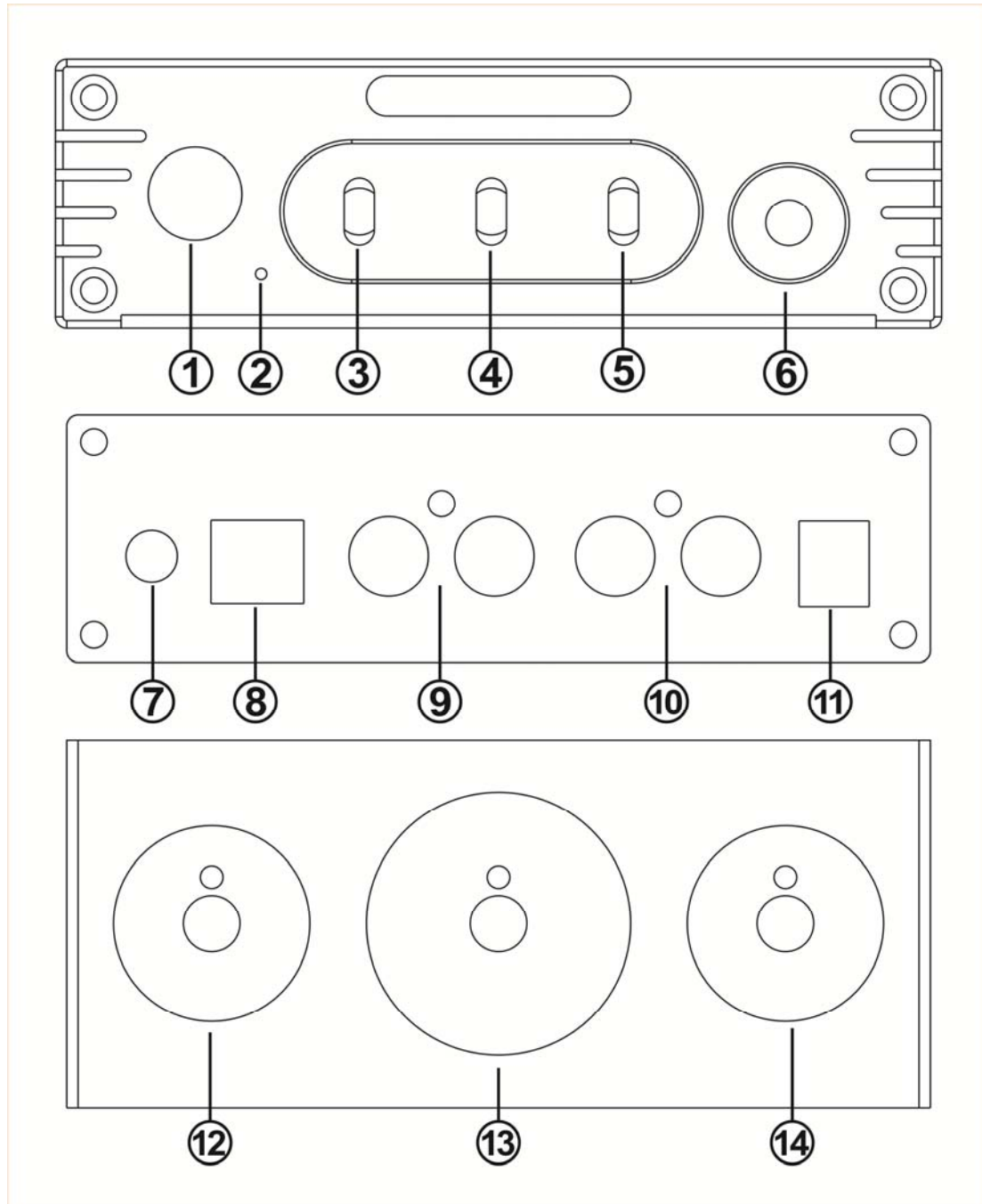
答：这时你要检查耳机输出是否插了耳机，或者插了耳机转接头，如果插了你要把耳机或转接头拔下来模拟 RCA 输出才会有声音。

敬告：

1. 请勿私自打开外壳，操作不当可能会引起触电的危险。
2. 请使用正规厂家的开关电源，否则会损坏机器的风险。
3. 请勿将机器放置在高温高湿环境下工作。
4. 请勿在通电状态下拔插更换电子管，否则会烧坏你的电子管和机器。
5. 请勿更换不匹配的电子管型号，否则会烧坏你的电子管和机器。

Thank you very much for choosing our products! Please read this manual carefully before using the product.

Surface Instructions:



- ①Power Switch
- ②Power Led
- ③ Bluetooth /PC-USB/RCA input selective switch

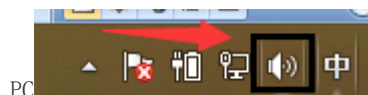
- ④TONE Switch (When closed bass and treble knob is invalid)
- ⑤Color selection switch for vacuum tube decorative lamp (The color of the decorative lamp can be changed or turned off by switching)
- ⑥Headphone amplifier output port
- ⑦Bluetooth RF
- ⑧PC-USB input jack
- ⑨Audio In (Such as CD、DAC、Mobile、TV etc, (Such as CD, DAC decoder, mobile phone, TV, etc., red to right channel input, white to left channel input)
- ⑩Audio Out (Such as amplifier, Earphone amplifier, active speaker, red to right channel input, white to left channel input)
- ⑪Power Plug (DC power can't beyond 12V)
- ⑫Bass Knob (increase clockwise and decrease counterclockwise)
- ⑬VOL+/- (increase clockwise and decrease counterclockwise)
- ⑭Treble Knob (increase clockwise and decrease counterclockwise)

Operation Steps:

1. Make sure the VOL turn to the minimum
2. Install the tube into the base of the tube according to the direction (the tube is not left or right, check whether the pin is deformed before installing the tube, and the deformation can be corrected by hand).
3. Connect the sound source that needs to be used (When connecting to bluetooth, you need to turn the input selection switch to bluetooth input)
4. Connect the external post equipment to the audio source output interface.
5. Connect the DC12 power supply
6. Turn on the power switch
7. Rotate the knob clockwise to select the desired volume

PC-USB Operation Instructions:

1. Connect the PC-USB interface of the rear surface of the machine with factory provided USB cable (USB can support hot plug)
2. Press the input signal selection switch to select USB input.
3. The following photo shows the icon with horn symbol in the lower right corner of



4. Right click to pop up the dialog box and click <choose play device.
5. Select the playback device recognized by PC in the pop-up dialog box (USB of this machine is automatic identification, no manual installation and drive).
6. Click to confirm the identified digital output.

Specifications:

| | | | |
|------------------------------------|--------------------------|-------------------|--------------|
| PC-USB Input Sampling Frequency | 192K/24Bit | THD | 0.01% |
| PC-USB System supported | XP/W7/W8/W10/MAC/linux | Bluetooth VER | 5.0 |
| Headphone matching impedance | 32-300 Ω | SNR | ≥ 98 dB |
| Headphone Max power output | 160mW 32 Ω load | Working voltage | DC12V |
| Bass & Treble Range | ± 6 dB | Product Dimension | 180*118*36MM |
| RCA output level | 2.3V | Product Weight | 0.62kg |
| Frequency Range | 20Hz-20kHz (± 3 dB) | Package Dimension | 240*210*60mm |

Frequently Asked Questions:

Q:ables are connected, but no sound output?

A: 1. Check the POWER indicator is on, press the POWER button if the light is still off, At this point you can find a same output voltage power supply (must 12V) to check if the machine or power supply failure. If the POWER indicator light is on, check whether the corresponding input signal is selected correctly.

2. If the indicator light is on, check whether the VOL knob is in the minimum position. If so, turn clockwise to normal Volume

3. If both of the above are normal, check the input device if it is paused, mute, or the volume is minimized

Q: Why does the sound is cracking?

A: This product is for the tube preamp, but also can be used as preamp, If post equipment is max volume & preamp too, it's easy to distortion, you just need to turn down the volume of the equipment, then ok.

Q: why does the volume of the machine stay the same, while the sound of different audio sources (such as CDS and mobile phones) is different?

A: The output range of different types of audio source devices is different, the mobile phone is usually 0.35mV, and the CD is 1V. The signal output amplitude of the sound source will directly influence the volume

Q: Why do loudspeakers make a lot of electric noise?

A: if you are not using the original factory standard power supply, please replace the power supply before testing. Many power supply in the market have large interference coefficient, which will cause a lot of current sound.

Q: Why the speaker has drone when I just plug in the input cable but don't connect the sound sources ?

A: If you use unshielded signal lines, there will be interference signals entering the power amplifier. If you hate the sound, you are advised to use the shielded signal lines or unplug the signal lines.

Q: Why the sound is very hard at the beginning, the 3 frequencies is not very clear, but normal after a day use?

A: The tube is a very sensitive device with good effect once the temperature should reach a degree commonly, normally about half an hour later the voice is very natural.

Q: Can I update the tube?

A: yes, we have tested and matched 6J1/6J1/6j4 / GE5654/6ak5/66*1n1n in our factory. It can be replaced directly. The sound will be different with different tube.

Q: Can I replace the tube without power off ?

A: no, it is very easy to burn the tube, because the machine works under high voltage and the hot plug will damage the tube & machine, also will hurt the people

Q: Can this machine connect to the phonograph/phonograph?

A: At present, this model does not support the signal, input of the phonograph/gramophone because the output signal amplitude of the phonograph/gramophone is small, so it needs to increase the phonograph amplifier.

Q: why there is no sound when PC-USB connects to PC?

A: First press the PC-USB operation to confirm whether the digital playback output has been selected. If still no sound, you can restart the computer and repeat the operation again.

Q: why is it that all my wires are plugged in, but the RCA analog output is silent? A: at this point, you should check whether the earphone output is plugged into the earphone or the earphone adapter. If so, you should unplug the earphone or adapter to simulate the RCA output.

Warning

1. Please do not open the shell without permission. Improper operation may cause the danger of electric shock.
2. Please use the power supply of the regular manufacturer, otherwise it will damage the machine.
3. Please do not use the machine in a high temperature and humidity environment.
4. Please don't replace the tube when the power on, otherwise the tube & machine will be damaged
5. Please don't use the non-matched tube, otherwise the tube & machine will be damaged

FCC Warning
Statement

Changes or modifications not expressly approved by the party responsible for compliance could void the user's authority to operate the equipment. This equipment has been tested and found to comply with the limits for a Class B digital device, pursuant to Part 15 of the FCC Rules. These limits are designed to provide reasonable protection against harmful interference in a residential installation. This equipment generates uses and can radiate radio frequency energy and, if not installed and used in accordance with the instructions, may cause harmful interference to radio communications. However, there is no guarantee that interference will not occur in a particular installation. If this equipment does cause harmful interference to radio or television reception, which can be determined by turning the equipment off and on, the user is encouraged to try to correct the interference by one or more of the following measures:

- - Reorient or relocate the receiving antenna.
- - Increase the separation between the equipment and receiver.
- - Connect the equipment into an outlet on a circuit different from that to which the receiver is connected.
- - Consult the dealer or an experienced radio/TV technician for help.

This device complies with part 15 of the FCC Rules. Operation is subject to the following two conditions: (1) This device may not cause harmful interference, and (2) this device must accept any interference received, including interference that may cause undesired operation.

The device has been evaluated to meet general RF exposure requirement.