

FCC Statement

This equipment has been tested and found to comply with the limits for a Class B digital device, pursuant to part 15 of the FCC Rules. These limits are designed to provide reasonable protection against harmful interference in a residential installation. This equipment generates, uses and can radiate radio frequency energy and, if not installed and used in accordance with the instructions, may cause harmful interference to radio communications. However, there is no guarantee that interference will not occur in a particular installation. If this equipment does cause harmful interference to radio or television reception, which can be determined by turning the equipment off and on, the user is encouraged to try to correct the interference by one or more of the following measures:

- Reorient or relocate the receiving antenna.
 - Increase the separation between the equipment and receiver.
 - Connect the equipment into an outlet on a circuit different from that to which the receiver is connected.
 - Consult the dealer or an experienced radio/TV technician for help.
- Caution: Any changes or modifications to this device not explicitly approved by manufacturer could void your authority to operate this equipment.

This device complies with part 15 of the FCC Rules. Operation is subject to the following two conditions: (1) This device may not cause harmful interference, and (2) this device must accept any interference received, including interference that may cause undesired operation.

RF Exposure Information

The device has been evaluated to meet general RF exposure requirement. The device can be used in portable exposure condition without restriction.

Specific Absorption Rate (SAR) information :

This Shenzhen Weinate Trading Co., Ltd. meets the government's requirements for exposure to radio waves. The guidelines are based on standards that were developed by independent scientific organizations through periodic and thorough evaluation of scientific studies. The standards include a substantial safety margin designed to assure the safety of all persons regardless of age or health. FCC RF Exposure Information and Statement the SAR limit of USA (FCC) is 1.6 W/kg averaged over one gram of tissue. Device types: Shenzhen Weinate Trading Co., Ltd. has also been tested against this SAR limit. This device was tested for typical body-worn operations with the back of the phone kept 10mm from the body. To maintain compliance with FCC RF exposure requirements, use accessories that maintain an 10mm separation distance between the user's body and the back of the phone. The use of belt clips, holsters and similar accessories should not contain metallic components in its assembly. The use of accessories that do not satisfy these requirements may not comply with FCC RF exposure requirements, and should be avoided.

WIFI Camera

User Manual

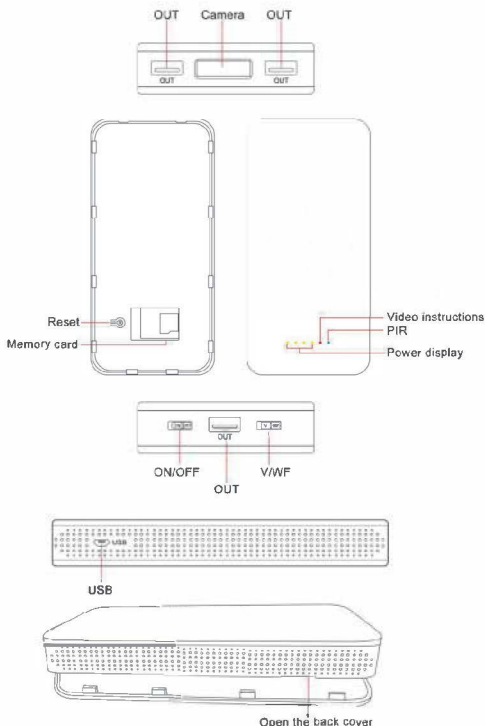


Scan the QR code to watch the camera setting video.

In order to connect to the router faster, please be next to the router and complete the next steps. After completing the settings, install the camera in the same room as the router.

Thank you for using this WiFi camera.

Product Structure



The Indicator Lights:

- The orange lights indicate battery power status (It will keep on 10 seconds while the camera is powered ON/OFF every time, one light means 25% power remain).
- The red light indicates continuous recording mode.
- The blue light indicates WiFi mode (Camera was connected to WiFi)

Reset Function: If you can't connect to Wifi, you need to press the reset button to reset (Click button for 10 seconds) device and then turn on the "Phone Setting" to connect hotspot. (Device Reset Successful: blue light is always slowly flashes)

Continuous Recording Mode:

V: This power bank camera support recording without a WiFi, just insert a Micro SD card (Up to 128GB) and power on the device, then slide the V/WF button on V position, the blue light will flash 10 seconds and goes off, the camera will start recording and saved on the SD card; If the blue light always stay on, the camera not start recording, please check that if the SD card missed or it's full.

WF: Will V/WF button on WF position. It will turn on the WIFI mode, and you can perform the following setting operations next to the router.

Wi-Fi Remotely Mode:

If you want to view the camera while you're away, please download the App and connect your camera to WiFi as following steps, if the camera connected to wifi successfully, the blue light is always stay on.

1. Download and Install the APP.

For iOS Devices:

- Scan below QR Code for iOS operating system to download and install "Lookcam" APP with iPhone or iPad devices.
- Search "Lookcam" in App Store with your iOS devices, download and install APP.

For Android Devices:

- Scan below QR Code for Android operating system to download and install "Lookcam" APP with Mobile or tablet devices.
- Search "Lookcam" in Google Play with your iOS devices, download and install APP.

Please do not download the wrong one (lookcam pro)



Important Tips:

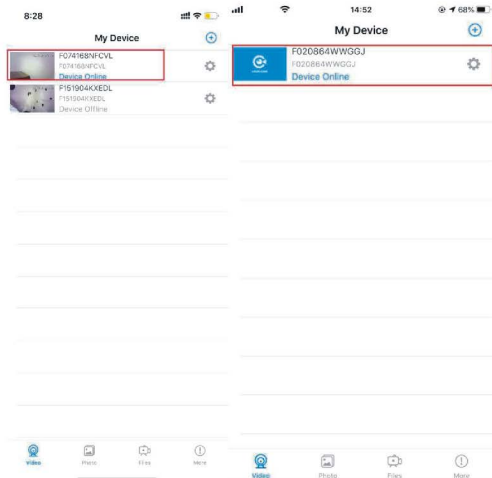
For the first time use, please press the Reset button about 10 Seconds to restore the factory settings before camera setup and use. (Device Reset Succeeded: Blue light is flashing slowly, it means that the camera is waiting for wifi connection).

2. Camera Setup and Wi-Fi Connection.

- Open the **WIFI SETTINGS** of your phone --> Click on LAN --> Choose and connect the name of hotspot signal named as: FXXXXXXX (It was generated by the camera)



- After the connection is successful, go back to the APP
- You can see the device is successfully added and online in the app

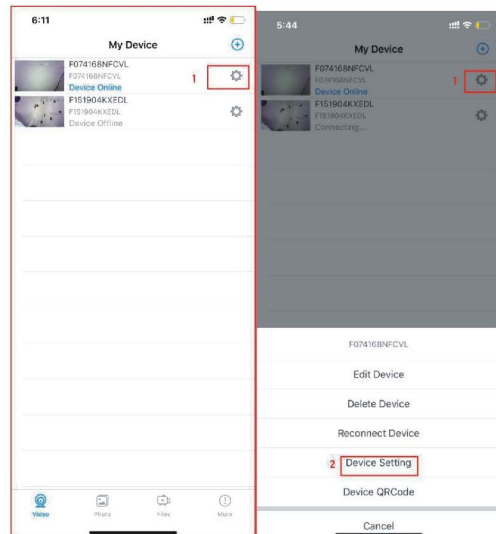


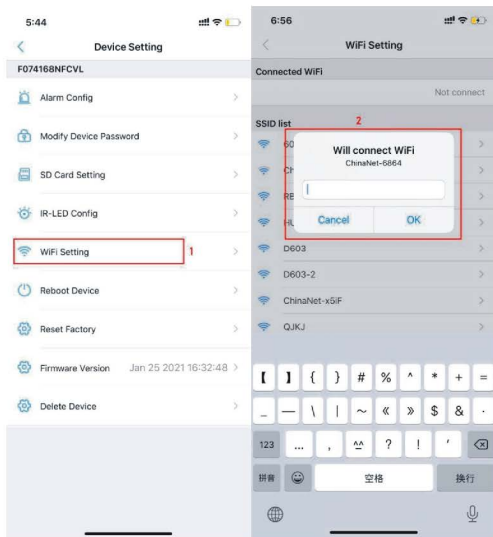
Important Note at this Step:

If you can not find the camera's hot-spot signal in your phone, you have to reboot the device by press the RESET-key for about 8S until the indicator lights shut off, then the device will be restart and the hot-spot signal will come up again in a few seconds, then you're able to connect the hot-spot and config the wifi connection.

When this step was done, you're able to watch video when you're nearby the device. If you want to access live streaming video remotely, it need to set up the camera connected to router's WIFI on next steps.

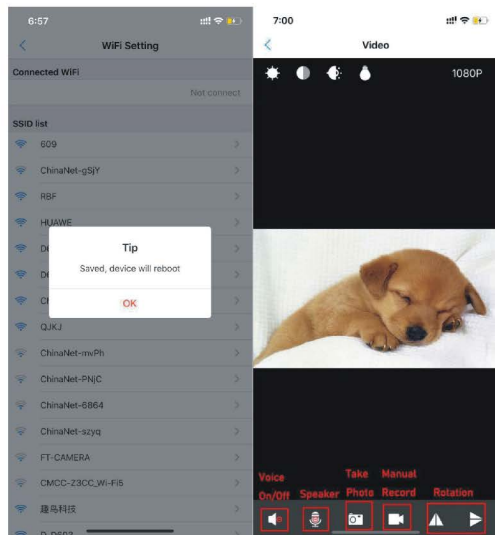
D. Click the setting button, choose the "Device Setting" to select your router's WIFI, input your WIFI password, then click ok to connect WIFI.



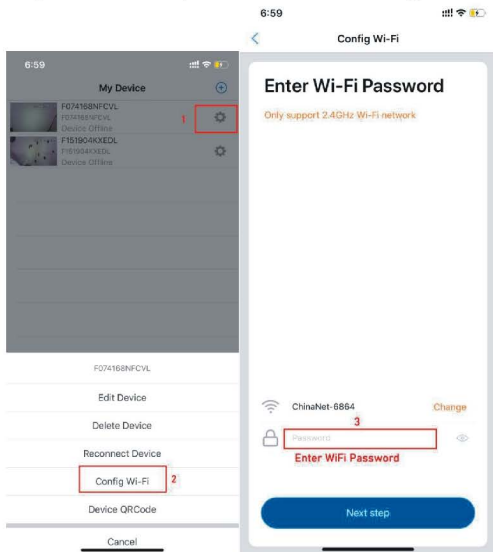


The camera only supports 2.4Gwifi frequency, please don't choose a wifi name such as (ChinaNet-5G) or (ChinaNet-2G)

E. Waiting for the device reboot until the camera goes online, the blue light will always stay on and then you can access live video and monitor your home anytime from anywhere by your phone.



F. If your device can't connect with your router, please make sure your WIFI password don't include any special character, then re-connect WIFI again.

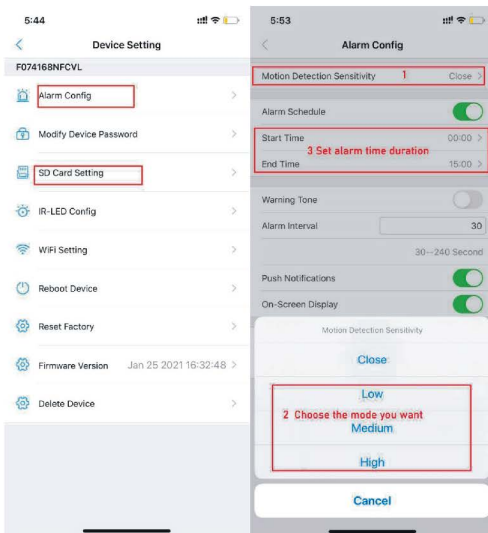


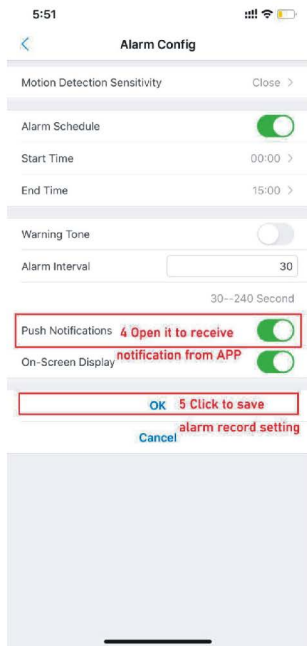
2. Check the router

Usually the router is 2.4 GHz and 5 GHz dual frequency. If the camera is not successfully connected to the router, you can find the URL on the back of the router to enter the router's website or app, enter the settings, and check whether the router is set to 2.4GHz and 5GHz combined into one. If so, you will only see A router name, you can divide the router into dual frequency, you will see the mobile wifi list will have an extra wifi name *****-5G, this is 5Gwifi, it is not available, you only need to connect 2.4GHzWIFI .

3. Alarm Setting.

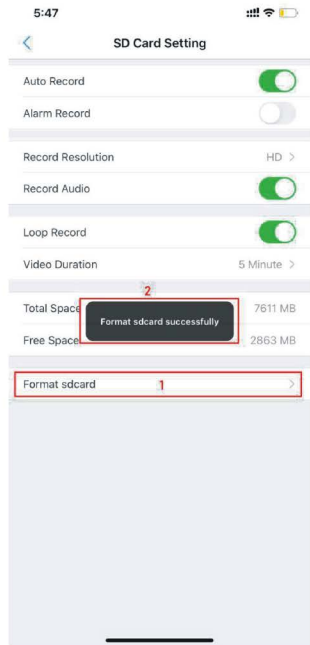
Open the motion detection sensitivity and select the mode you want for warning mode. Alarm Schedule (Start Time) - (End Time), Warning tone. Alarm Interval(30-240 Second), Push Notifications, On-Screen Display.





4. Micro SD Card Format

This device support max 128GB TF Card(not included), after insert memory card, you can format TF card through APP before using



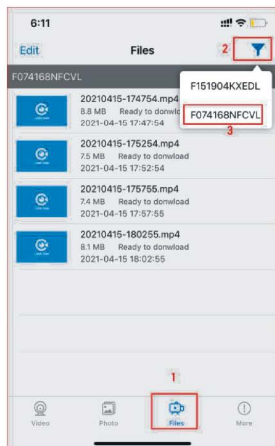
5. TF Card Recording Setting.

Click the Setting -->Device Setting,then select to make SD Card Setting. There are three mode for **video recording**:

- 1) **Auto Record**: all day record when you open the “Auto Record” button
- 2) **Alarm Record**: motion detection recording, please go to “Alarm Config” for setting
- 3) **Loop Record**: when TF card is full, it will automatically overwrite the recording file to continue video recording and storage on TF card
- 4) **Record Audio**: Turn On/OFF to record demo with audio/ without audio
- 5) **Record Resolution**: The factory default is HD
- 6) **Video Duration**: 1 minute/ 3 minute/ 5 minute can be optional

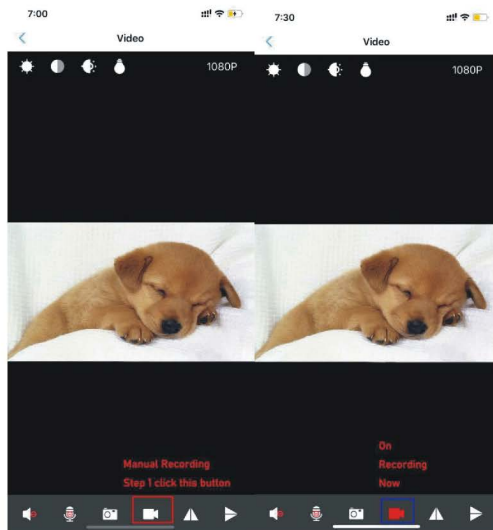
6. Video Playback.

Find “Files” in APP—Click video file(mp4 format) to Playback video on TF Card

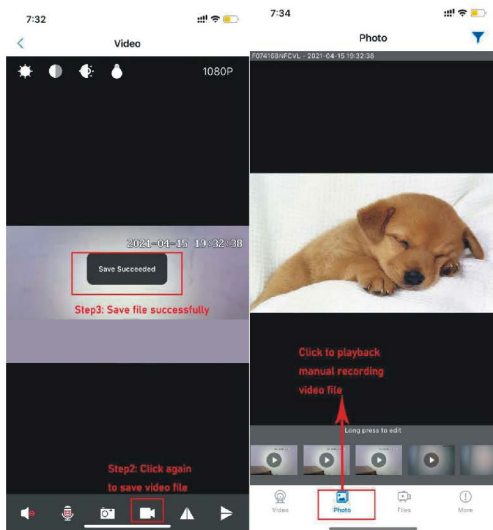


7. Manual Recording.

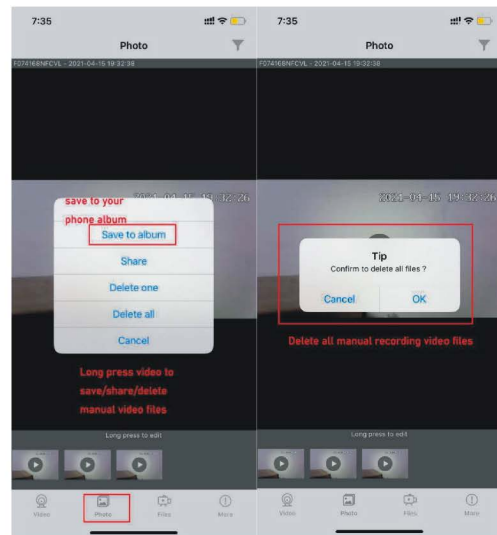
- 1) Click manual recording button on APP, it will save video file on your phone



2) Where to playback manual video recording file.



3) How to share/delete your manual recording video file.



8. Battery Charging and Wireless Charging Functions.

(1) **Charge the power bank camera:** Connect the power bank by Micro USB cable. After the power is connected, the orange lights will blink in sequence. After the battery is fully charged, all the 4 orange lights will stay on and will not blink anymore.

(2) **USB charging for mobile phone:** USB charging for any mobile devices by the USB power cord.

9. Related Parameters.

Resolution Ratio	1080P/30fps
Video Format	AVI
Connection Type	WiFi (2.4G only)
Visual Angle	90 degree
Minimal Illumination	1LUX
Compressed Format	H.264
Night Vision Distance	5-8 meter
Recording Range	20 m ²
Battery Capacity	10000 mAh
Charging Time	10 hours
USB/Wireless charging output	5V/2A
Memory Card Type	TF card
Maximum Storage	Up to 128G
Mobile Phone Operating System	Android/iOS

10. Frequently Questions & Answers

What micro SD card is required for recording?

The camera supports up to 128GB micro SD card.

Please use high speed class 10 FAT formatted memory card.

Why can't I use my micro SD Card for recording?

You must format the micro SD before using.

If SD card is not recognized when inserted into camera just remove and re-insert.

Why can't the camera go online?

1.The camera is far away from your router.

2.Check if your router is working properly or not .

3.Weak WiFi signal

4.Wrong password while WiFi setting.

Why is remote monitoring not smooth ?

You should choose a suitable resolution to watch according to your internet speed.

when I forgot my password ?

Press the RESET button 5 seconds and restore the factory setting, then the password is recover to initial password: **123456**, and you can set your own passwords to ensure the security of your camera.

If the camera stop working or offline at any situation, please restart the device by clicking the reset button 5-8 seconds until the blue lights flash slowly, then have to connect your phone to the hot-spot(FXXXXX) and complete the whole WiFi configuration again.

**If you have any setup questions,
please contact us via email:**

**Email: WNAT.help@hotmail.com
WhatsApp China: +8618682168838**