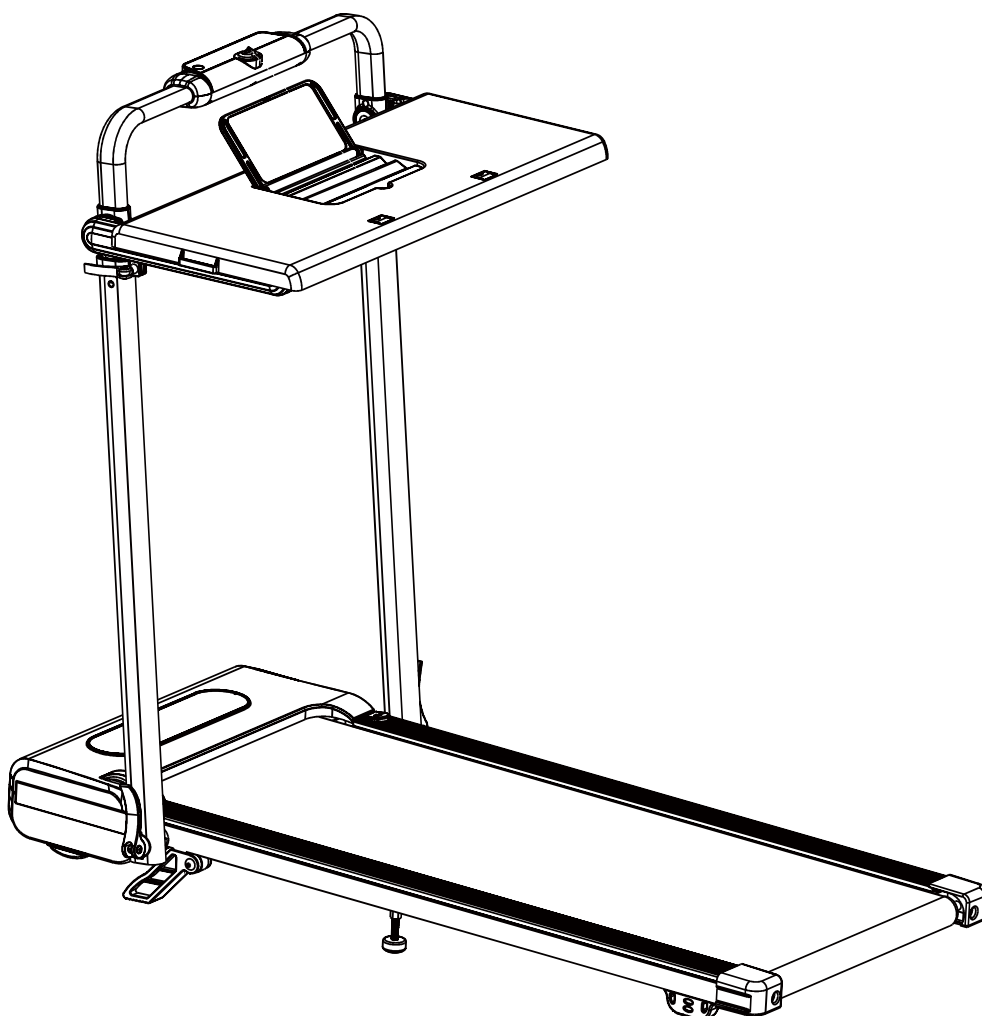


**ACEZOE**

**3 in 1 Foldable Treadmill with Desk & Incline**

# ***User Manual***

**Model P20**



*Born for a Healthier Life !*

## CONTENT

<b>1. After-sales Service</b>	<b>02</b>
<b>2. Important Safety Warning</b>	<b>03</b>
2.1 Precautions Before Use	-03
2.2 Precautions While Using	-03
2.3 Storage and Maintenance Precautions	-04
2.4 Precautions for Coin Cell Batteries	-04
<b>3. Overview &amp; Accessories</b>	<b>05</b>
3.1 Package List	-05
3.2 Product Overview	-06
3.3 Button Console	-07
3.4 Mini LED Screen	-07
3.5 Remote Control	-08
<b>4. Assembly &amp; Folding</b>	<b>10</b>
4.1 Assembly	-10
4.2 Folding	-13
<b>5. How to Use</b>	<b>15</b>
5.1 Slope Adjusting	-16
5.2 Treadmill Mode	-16
5.3 Walking Pad Mode	-19
5.4 Sleep Mode	-19
<b>6. How to Use with APP</b>	<b>20</b>
6.1 APP Download	-20
6.2 Connect & Control Device	-20
6.3 Functions	-21
<b>7. Maintenance</b>	<b>22</b>
7.1 General Maintenance	-22
7.2 Running Belt Adjustment	-23
7.3 Running Belt Lubrication	-24
7.4 Product Cleaning	-25
<b>8. Specification</b>	<b>26</b>
<b>9. Troubleshooting</b>	<b>27</b>
<b>10. Warranty</b>	<b>29</b>

If you have any questions, please email to ✉ [support01@acezoe.us](mailto:support01@acezoe.us)

## 1. After-sales Service



Please do not disassemble, repair or return the machine before contacting Acezoe Support Team.

For damaged or defective products, questions, replacement parts or any other service support, please feel free contact our customer service department as below.



Email our Customer Service to get more help: ✉ [support01@acezoe.us](mailto:support01@acezoe.us)



Acezoe is glad to serve you, we will get back to you within 1 business day.



Scan this QR code or browse Acezoe official website to get more product Installation Guide:  
[www.acezoe.us](http://www.acezoe.us)



02 >>>

If you have any questions, please email to ✉ [support01@acezoe.us](mailto:support01@acezoe.us)

## 2. Important Safety Warning



**ATTENTION: Before using this machine, please read all instructions in the manual and cautionary markings on the machine carefully.**

### 2.1 Precautions Before Use

- This product only works under 120V/60Hz voltage. Be sure to use a power socket with safety ground. The grounding plug must be installed and grounded according to the parameters specified locally. If the plug does not match the socket, ask qualified electricians or after-sales staff to handle it.
- Be careful not to place the treadmill on items such as thick carpets, so as not to affect the air circulation under the treadmill. ⚠
- Keep the room well ventilated when using the treadmill.
- Do not use or store in places exposed to direct sunlight, high-temperature places such as around stoves, or heating appliances such as electric blankets, which may cause electric leakage or fire. ⚠
- Do not use with wet hands! Do not pull out or insert the power plug with wet hands to avoid electric shock or injury. ⚠
- Do not use the product in a state where the outside of the product is cracked, damaged, or peeled off (the internal structure is exposed), or when the welding part is peeled off.
- Do not use if the power cord or plug is damaged, or if the outlet jack is loose, which may result in electric shock, short circuit or fire. ⚠
- The maximum weight capacity of this unit is 300 pounds (136 KG).

### 2.2 Precautions While Using

- Barefoot exercise is strictly prohibited. Please do warm-up exercise before exercise to avoid body strain.
- Please stop exercising immediately and consult a doctor if you feel unwell or have abnormalities during use.
- Patients who are being treated by a doctor should be sure to use this product only after discussing with a specialized doctor, especially those who have suffered injuries to the legs, waist and neck; those who have deforming arthritis, rheumatism, gout; those who have osteoporosis; those who have heart disease, vascular disorders, high blood pressure, and so on; people with obvious poor health condition.
- Do not jump up and down during exercise to avoid falling and getting injured.
- Do not let children approach treadmill in use to avoid accidents. Pay attention to the surrounding people not to get close during using.
- Do not use this machine with two or more people at the same time, which may result in an accident or fall injury.
- Persons who are indisposed, mentally disabled or lack common sense are not allowed to

03 >>>

If you have any questions, please email to [support01@acezoe.us](mailto:support01@acezoe.us)

use it, unless under the supervision and guidance of persons responsible for their safety.

- Minors must be accompanied by adults when using treadmill.
- Avoid long-term overload operation. It is recommended that turn off the power after 2 hours of continuous use and let the machine rest for 10 minutes before using it.
- Please turn off the power switch after exercise. Pull out the power plug from the socket when not in use to avoid the deterioration of the insulation due to dust and moisture, which may lead to electric leakage and fires. ⚠

### 2.3 Storage and Maintenance Precautions

- Please be sure to unplug the power plug of the treadmill before cleaning, maintaining and moving the product. ⚠
- Open the motor protection cover at least once a year to vacuum and clean the motor.
- Add 10ml of lubricating oil every 3 months to maintain the machine. Silicone oil must be placed out of the reach of children to avoid serious consequences by accidental ingestion.
- Store the treadmill indoors to avoid moisture and do not place any foreign objects. Do not expose the motor or operating parts to water or liquids, to avoid electric shock or fire. ⚠
- If there is any problem with this machine, please contact Acezoe Support Team. Non-professionals, please do not attempt to disassemble or repair it to avoid equipment damage.

### 2.4 Precautions for Coin Cell Batteries

- Ensure the batteries are installed correctly according to polarity (+ and -).
- Do not mix old and new batteries, different brands or types of batteries, such as alkaline, carbon-zinc, or rechargeable batteries.
- The compatible battery type is CR2025.
- The nominal battery voltage is 3V.
- Remove and immediately recycle or dispose of batteries from equipment not used for an extended period of time according to local regulations.
- Always completely secure the battery compartment. If the battery compartment does not close securely, stop using the product, remove the batteries, and keep them away from children.
- Non-rechargeable batteries are not to be recharged.
- Do not force discharge, recharge, disassemble, heat or incinerate. Doing so may result in injury due to venting, leakage or explosion resulting in chemical burns. ⚠
- Remove and immediately recycle or dispose of used batteries according to local regulations and keep away from children. Do NOT dispose of batteries in household trash or incinerate. ⚠
- Even used batteries may cause severe injury or death. ⚠
- Call a local poison control center for treatment information.

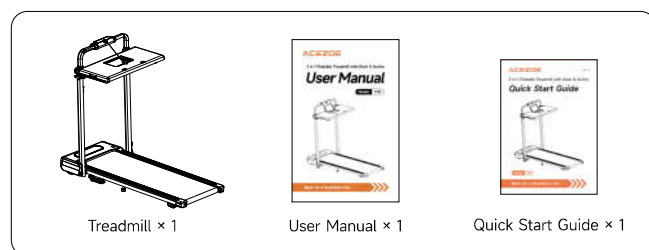
## SAVE THESE INSTRUCTIONS

04 >>>

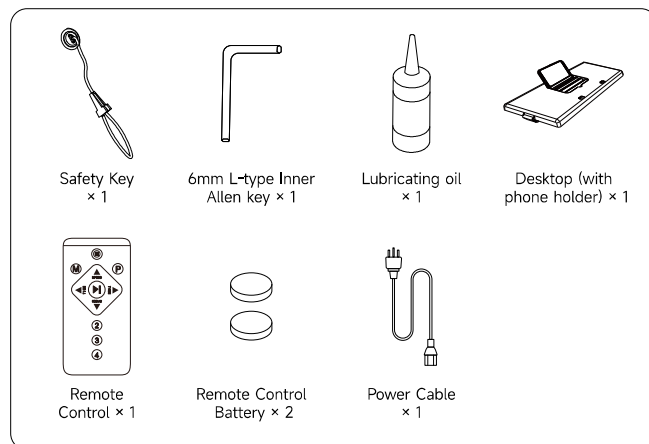
If you have any questions, please email to [support01@acezoe.us](mailto:support01@acezoe.us)

## 3. Overview & Accessories

### 3.1 Package List



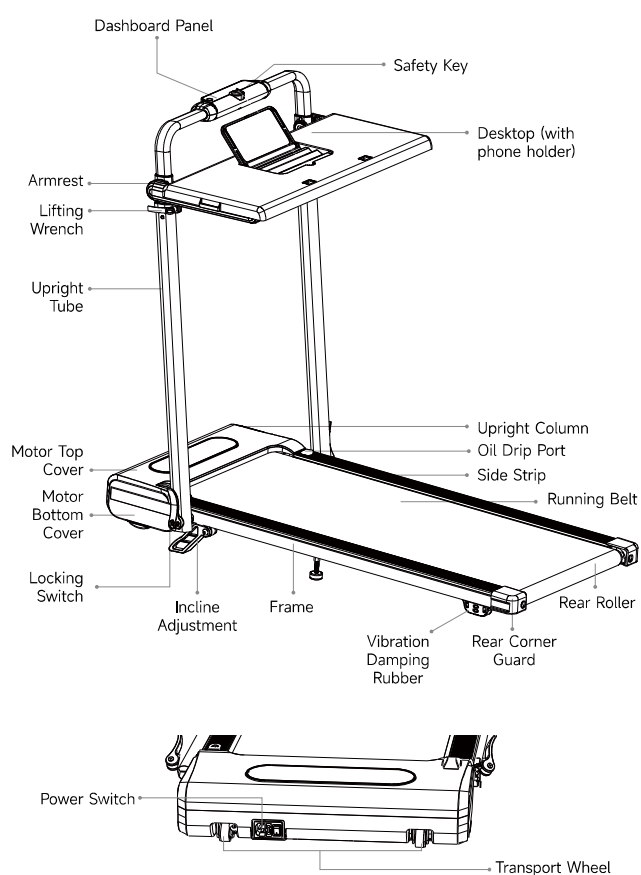
### Tool Kit



05 >>>

If you have any questions, please email to [support01@acezoe.us](mailto:support01@acezoe.us)

### 3.2 Product Overview



06 >>>

If you have any questions, please email to [support01@acezoe.us](mailto:support01@acezoe.us)

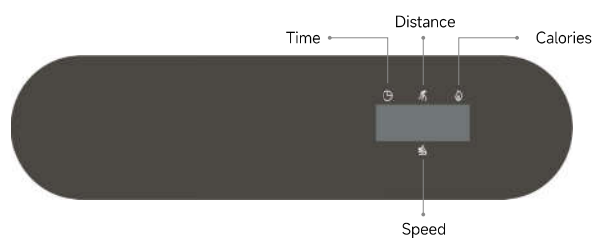
### 3.3 Button Console



#### Button Functions

2/4	Press this key, and the treadmill will accelerate SPEED to 2/4MPH.
Start/Stop	1. Press this key, the treadmill will start running after a 3s countdown. 2. In running mode, press this key to stop the treadmill. All values will be cleared.
M/P	Press the button to set the countdown targets for H1 (time), H2 (speed), and H3 (distance), along with the P01-P12 programs. When P12 is displayed, press the button again to reset all values to zero. Press it once more to begin the cycle again.
SPEED-	1. When the treadmill is running, press this key to decrease the speed. 2. It can be used to set time, distance, and calorie values.
SPEED+	1. When the treadmill is running, press this key to increase the speed. 2. It can be used to set time, distance, and calorie values.

### 3.4 Mini LED Screen



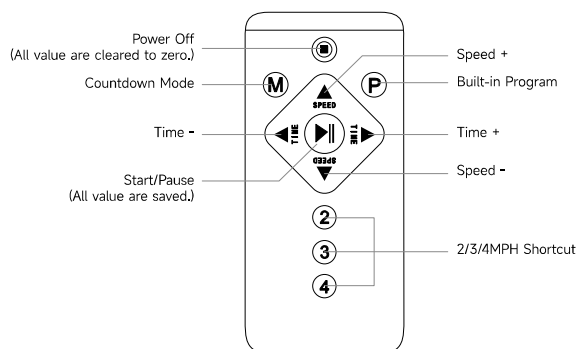
07 >>>

If you have any questions, please email to [support01@acezoe.us](mailto:support01@acezoe.us)

### Display Value on the LED Screen

TIME	1.Displays the exercising time during exercise. 2.When adjusting the value in the countdown mode, it displays the set time value. 3.Displays the countdowns of "3" - "2"- "1" in turn during startup.
DIS.	1.Displays the exercising distance during exercise. 2.When adjusting the value in the countdown mode, it displays the set distance value.
CAL.	1.Displays the value of calories burned during exercise. 2.When adjusting the value in the countdown mode, it displays the set calorie value.
SPEED	1.Displays the exercising speed during exercise. 2.Displays "E07" when the Safety Key is disconnected. 3.The lower left corner displays the program number when a built-in program is selected.

### 3.5 Remote Control



08 >>>

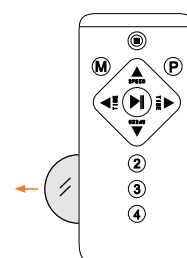
If you have any questions, please email to [support01@acezoe.us](mailto:support01@acezoe.us)

Button	Function
	Press to stop the treadmill during running. The speed slowly decreases and all value will be cleared to zero.
	Press to start the treadmill. It will start running after a 3s countdown. Press again to pause the treadmill and retain the current distance, time, and calorie value.
M	<ul style="list-style-type: none"> <li>In standby mode, press the button to enter the countdown mode setting.</li> <li>Press once, twice, or three times to set the countdown target values for H1-time, H2-speed, and H3-distance respectively.</li> </ul>
P	<ul style="list-style-type: none"> <li>In standby mode, press the button to enter the built-in program setting.</li> <li>Press to choose from built-in P01-P12 programs, the speed changes differently for each program.</li> </ul>
2 / 3 / 4	The treadmill will accelerate SPEED to 2/3/4 MPH directly.
▲ / ►	Increase speed, time, distance, and calorie values.
▼ / ◀	Decrease speed, time, distance, and calorie values.



#### TIPS:

Please remove the insulating tabs from the battery when using the remote control for the first time.



09 >>>

If you have any questions, please email to [support01@acezoe.us](mailto:support01@acezoe.us)

## 4. Assembly & Folding

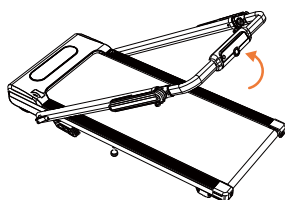
### 4.1 Assembly

#### Installation Preparation

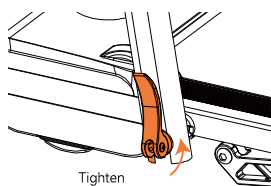
- For safety operation, please select a safe, dry, solid and spacious horizontal surface for installation.
- After receiving the product, remove all parts from the product package. Please carefully check whether the parts and tools are complete according to the packing list.
- Please ensure that two people participate in the assembly, and do not lift heavy parts alone to avoid product or personal damage.

#### How to install

- ① Open the package, take out the assembly parts from the box, and place the main unit flat on the ground.
- ② Lift and push the column tube upwards until it stops moving.



- ③ Tighten the left Locking Switch clockwise until the upright column is fully secured. (Same operation on the other side.)

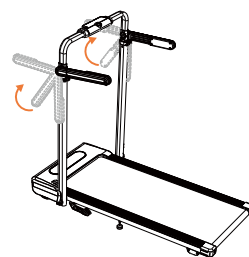


Tighten

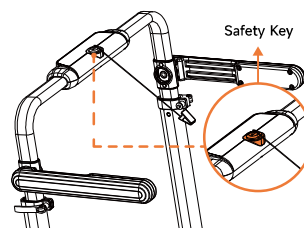
10 >>>

If you have any questions, please email to [support01@acezoe.us](mailto:support01@acezoe.us)

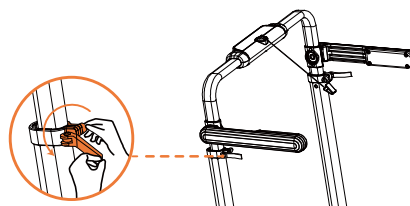
- ④ Rotate the left armrest clockwise until the armrest is parallel to the floor. (Same operation for the right armrest.)



- ⑤ Put the Safety Key on the yellow slot of the touch console.



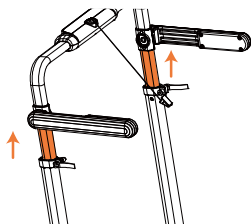
- ⑥ Open the lifting wrench on the left tube, turn counterclockwise to loosen the lifting wrench while holding the inner side screw. (Same operation on the other side, )



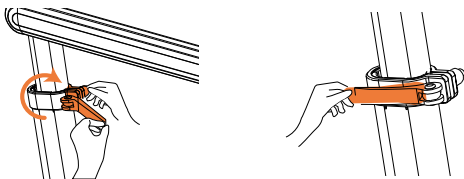
11 >>>

If you have any questions, please email to [support01@acezoe.us](mailto:support01@acezoe.us)

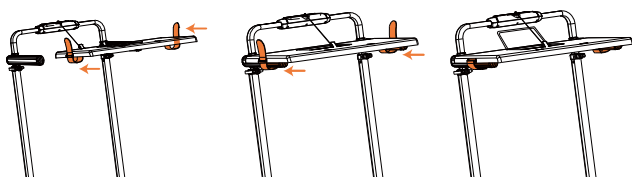
- ⑦ Hold the armrest both sides with hands, adjust the pole to the desired height.



- ⑧ Turn clockwise to tighten the lifting wrench while holding the inner side screw. If still loosen, tighten it by inner side screw, then lock the lifting wrench inward. (Same operation on the other side )



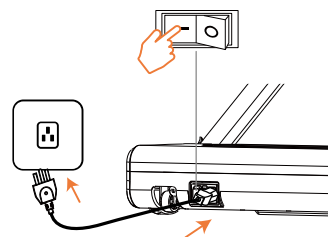
- ⑨ Open 2 velcro straps of the desk, loosen them a little, then push the desk along the armrest, finally tighten 2 velcro straps to fix the desk and armrest tightly.



12 >>>

If you have any questions, please email to [support01@acezoe.us](mailto:support01@acezoe.us)

- ⑩ Connect the power cord to the machine, plug in the power cord and turn on the Power Switch.

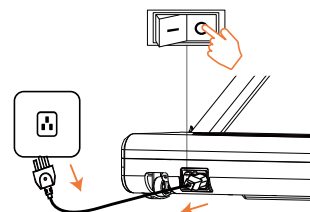


## 4.2 Folding

### Make sure that



- The power is turned off and the power plug is removed from the socket before folding.
- Be careful not to pinch your hands when folding.

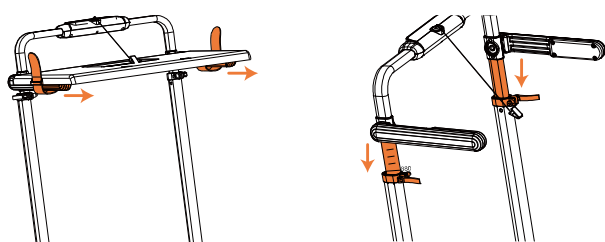


- ① Take off the desk.
- ② Adjust the adjustable tube to the scale line of at least 830mm.
- ③ Rotate the armrest counterclockwise until it fits snugly against the upright tube. (Right armrest rotated clockwise)
- ④ Release the locking switch on the left side downwards, then repeat on the right side.
- ⑤ Hold and lower the upright tube until it is placed flat.

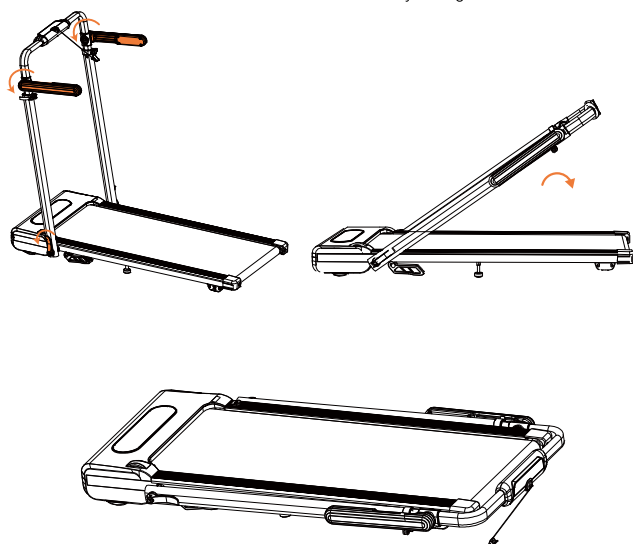
13 >>>



If you have any questions, please email to ✉ [support01@acezoe.us](mailto:support01@acezoe.us)



Adjust height to 880mm.



14 >>>

If you have any questions, please email to ✉ [support01@acezoe.us](mailto:support01@acezoe.us)

## 5. How to Use

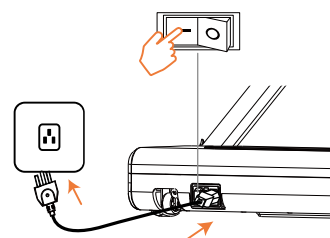


Before use, make sure that:

- Wear appropriate athletic shoes and keep the laces fastened. Barefoot exercise is strictly prohibited.
- Don't place the treadmill on a thick blanket to avoid affecting the heat dissipation of the machine.

### Power On

Plug in, turn on the power switch, you will hear a "beep" sound, and the treadmill will be standby.



### Connect Safety Key

- The treadmill will only work if the safety key is properly placed on the console slot. Please clip the safety key to your clothing.
- In any situation, unplug the safety key, the treadmill will stop in an emergency, each window displays "-----" with a "beep" sound. Don't perform any other operation on the treadmill except shutting it down.
- After the safety key is attached correctly again, the treadmill will enter the standby mode.



Make sure the safety key clip on the clothes when exercising, to ensure the machine stops quickly in the event of an accident.

### Start / Stop

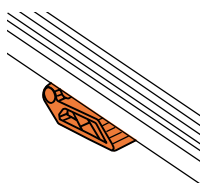
Press the "START" button on the console/remote control, the treadmill will start after a 3s countdown.

During exercise, press the "STOP" button on the console/remote control, or directly unplug the safety key to stop running.

15 >>>

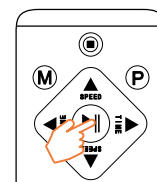
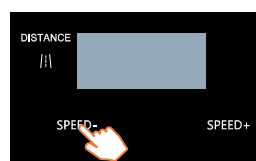
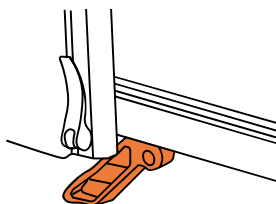
## 5.1 Slope Adjusting

### No Incline



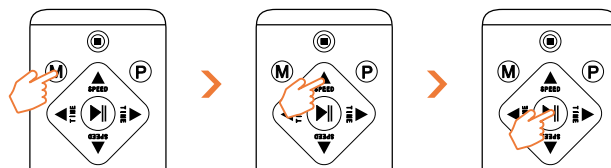
### With Incline

Push the incline device forward and place it flat.



### Countdown Mode

In this mode, the value of time, distance, and calories can be set as target countdown value on demand.



## 5.2 Treadmill Mode

The machine is activated in Manual Mode by default.

### Manual Mode

The initial operating speed in manual mode is 0.6MPH, press "-" / "+" on the control panel or "speed / " on the remote control to adjust the speed, distance, time and calorie data.

In treadmill mode, the speed can be set within the range: 0.6-7.5MPH.

### Tips:

Tips: After 99:00 minutes of exercise, the machine stops automatically, press "⏏" key on the control panel or "▶" to restart, the time starts counting from zero again.

① In standby mode, press the "P/M" key on the control panel or "M" key on the remote control to enter the countdown mode.

② Press the "M" key to cycle switch: "TIME" - "DISTANCE" - "CAL" - Manual mode.

- Window Display "H1" is "TIME" Countdown: The treadmill displays 30 minutes by default with flashes (The range that can be set is 5-99 Minutes)
- Window Display "H2" is "DISTANCE" Countdown: The treadmill displays 1 miles by default with flashes (The range that can be set is 1-99 Miles)
- Window Display "H3" is "CAL" Countdown: The treadmill displays 50 kcal by default with flashes (The range that can be set is 20-990 Kcal)

③ Press the "+" / "-" key on the control panel or "key on the remote control to add and decrease the value of the current window.

If you have any questions, please email to [support01@acezoe.us](mailto:support01@acezoe.us)

- ④ After setting, press the "▶||" key on the remote control, the treadmill starts from the lowest speed (0.6MPH) after a 3s countdown. The speed also can be adjusted on demand.
- ⑤ When the value set by countdown mode on the window drops to "0", the treadmill will slow down and stop automatically. While exercising, press the "⏻" key on the control panel or "⏻" key on the remote control or unplug the Safety Key can also stop the machine.

### Built-in Program

There are 12 different programs built into the treadmill, each program varies in speed. Each program is divided into 20 segments, and the running time of each segment is set time / 20.



- ① In standby mode, press the "P" key on the remote control to select any built-in program from P1 to P12. At this time, the "TIME" window displays the default value (30mins) and flashes, so press the "+" / "-" key on the control panel or "▲▼" key on the remote control to adjust the required exercising time (The range allowed to be set is 5-99 minutes).
- ② Press the "▶||" key on the remote control, after a 3s countdown, the treadmill will start to run at the speed of the first segment of the selected program.
- ③ When first segment of the program is finished, the treadmill will automatically enter the next segment of the program and adjust the corresponding parameters synchronously.
- ④ When all segments of the program are finished, the treadmill will slow down and stop automatically. While exercising, press the "⏻" key on the control panel or "⏻" key on the remote control or unplug the Safety Key can also stop the machine.

If you have any questions, please email to [support01@acezoe.us](mailto:support01@acezoe.us)

Program	1	2	3	4	5	6	7	8	9	10
P1	2	4	5	3	2	4	5	6	5	2
P2	2	4	2	5	6	3	6	6	6	3
P3	3	4	2	5	6	4	6	4	2	3
P4	3	2	4	2	5	6	6	5	4	2
P5	3	4	2	4	6	5	4	6	4	3
P6	3	4	2	4	5	3	6	3	5	2
P7	2	3	4	3	5	6	4	3	5	2
P8	2	5	3	4	5	6	4	6	3	2
P9	2	5	4	2	5	3	6	3	5	3
P10	3	2	5	6	4	3	6	6	5	3
P11	3	5	4	5	6	5	6	5	4	3
P12	3	4	5	6	6	6	5	4	3	2

### 5.3 Walking Pad Mode

Before using this mode, please refer to section 4.2 of the manual to fold the machine into a Walking Pad.

In Walking Pad mode, the machine is activated in Manual mode by default, there is no Built-in Program mode.

The initial operating speed in manual mode is 0.6MPH, press "+" / "-" on the remote control to adjust the speed, distance, time and calorie data, which will count up from 0.

In Walking Pad mode, the speed can be set within the range: 0.6-4MPH.

### 5.4 Sleep Mode

When the treadmill stops running and there is no operation for more than 10 minutes, the system will automatically turn off all displays and enter the sleep mode. Pressing any key will wake it up.

If you have any questions, please email to [support01@acezoe.us](mailto:support01@acezoe.us)

## 6. How to Use with APP

### 6.1 APP Download

Scan the QR Code or search the APP named "FITSHOW" in Google Play or APP Store ([Http://lifitshow.com/qr](http://lifitshow.com/qr))

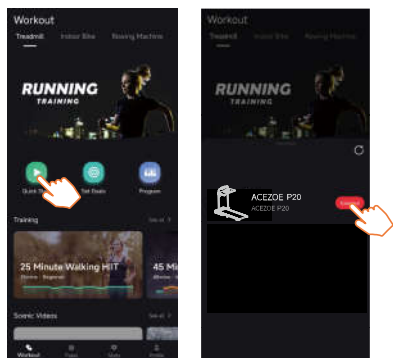


#### Tips:

Jump to the APP Store to download and install to open the APP, allow permission based on the system prompt.

### 6.2 Connect & Control Device

- ① Open the FITSHOW App and agree to the Privacy Policy and Terms of Service.
- ② Log in the APP, please use the mobile number or email to register for new user.
- ③ Fill in the basic user information likes height for more accurate exercise program recommendations.
- ④ On the APP homepage, click the "Workout" tab then press the "Quick Start" button.



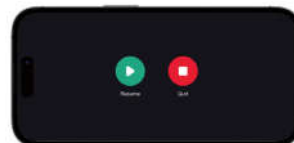
20 >>>>

If you have any questions, please email to [support01@acezoe.us](mailto:support01@acezoe.us)

- ⑥ In the workout screen, swipe down for settings and swipe up for control.



- ⑦ Tap the screen to end the workout.



### 6.3 Functions

#### Workout Mode

Quick Start	Workout with others in real time. Speed settings can be adjusted on demand.
Set Goals	Customize distance, time and calorie value as goal.
Program/Training	Train on an existing structured workout.
Scenic Videos	Jump into workouts to explore new places from beautiful forest to breathtaking mountains.
Expert Tips	It is recommended to watch some experts tips before exercising to make a suitable exercise plan.

21 >>>>

If you have any questions, please email to [support01@acezoe.us](mailto:support01@acezoe.us)



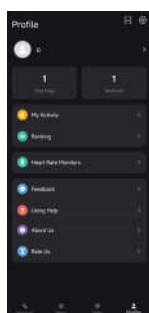
#### Plans

Quick overview of exercise date.



#### Stats

Quick overview of daily activity data.



#### Profile

Quick overview of daily goals and activity data.

## 7. Maintenance



#### WARNING:

Before cleaning or maintaining the product, be sure to unplug the power plug of the treadmill.

### 7.1 General Maintenance

Proper maintenance is helpful to prolong the service life of the treadmill.

- Please place the treadmill in a dry and shady environment. Don't place the treadmill outdoors in direct sunlight.
- After 2 hours of continuous use, it is recommended to turn off the power and let the machine rest for 10 minutes, which will effectively protect the machine motor and prolong the life of the machine.
- Make sure the shoes are clean when exercising, which avoid bringing foreign objects into the running belt to wear down the running desk/belt.
- Check and lock all parts of the treadmill regularly, and replace defective parts in time.
- Don't use the treadmill by force when it is damaged to avoid product and personal damage.

Contact Acezoe Support Team by email [support01@acezoe.us](mailto:support01@acezoe.us), the after sales team will assist you.

22 >>>

If you have any questions, please email to [support01@acezoe.us](mailto:support01@acezoe.us)

### 7.2 Running Belt Adjustment

The running belt of treadmill is adjusted before leaving the factory, during transportation, it may be stretched or have deviated from the center position. Please let the running belt run by itself when using it for the first time, and observe whether the running belt is in the center position, and there is no pause or slippage.

#### Adjust the tightness of Running Belt

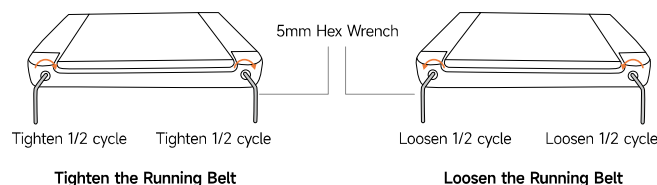
If the running belt slips or does not run smoothly in use, or there is a rattling noise from the running belt, adjust the tightness of the running belt to improve it.

- ① Insert the Allen key in the adjustment screw socket on the left side of the running belt, then turn the wrench clockwise to tighten the running belt. It's recommended to rotate 1/2 circle first;
- ② Repeat step 1 to adjust the right screw, same rotate 1/2 circle;
- ③ Repeat steps 1 and 2 until the running belt doesn't slip. Be sure in adjusting the screw to rotate the same distance;
- ④ If you need to loosen the running belt, please turn the key counterclockwise, and note that the left and right sides should rotate the same distance.



#### NOTE:

The running belt should not be adjusted too tightly, otherwise it will damage the running belt, which increase the pressure of the front/rear rotary drum, damage the drum bearing, produce noise and other problems.



#### Adjustment of running belt position

When using the treadmill, because of the possible force difference exerted by both feet and the unbalanced pressure exerted on the running belt, the running belt may deviate from the center, but this deviation phenomenon is normal.

- ① Place the treadmill on a level surface.
- ② Let the treadmill run at a speed of about 2.2MPH.
- ③ If the running belt is to the left, use a hex wrench to turn the adjustment bolt on the left side 1/4 turn clockwise, then let the treadmill run for 30s, the running belt will return to center.

23 >>>

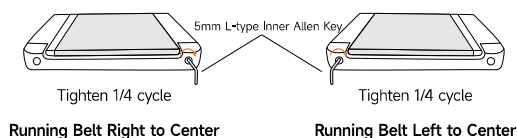
If you have any questions, please email to ✉ [support01@acezoe.us](mailto:support01@acezoe.us)

- ④ If the running belt is to the right, use a hex wrench to turn the right adjustment bolt 1/4 turn clockwise, then let the treadmill run for 30s, the running belt will return to center.
- ⑤ If the running belt is still not in the middle position, repeat the above operation until it is adjusted to the center position.



**NOTE:**

Do not over-tighten the rotary drum as this will cause permanent damage to the bearing.



### 7.3 Running Belt Lubrication

When the treadmill leaves the factory, lubricant is added, but necessary inspection is helpful to keep the treadmill in the best condition for use.

#### Inspection steps

- ① Pull up the side running belt and reach out to touch the surface of the running deck as far as possible;
- ② If you feel there is silicone oil, you don't need to add lubricant for the time being;
- ③ If you touch the surface and it feels very dry, you need to add 10ml silicone oil.

#### Adding Lubrication Frequency Suggestion

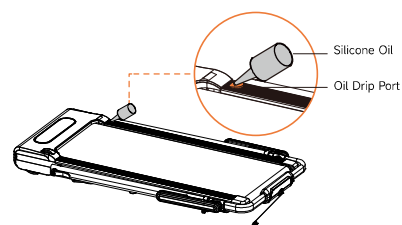
Condition	Action
First Use	Check the running deck, and add lubricant if the running deck is dry
Use less than 3 hours per week	Add lubricating oil every 1.5 months, 10ml each time
Use 3-5 hours per week	Add lubricating oil every 3 months, 10ml each time
Use more than 5 hours per week	Add lubricating oil every 6 months, 10ml each time
Reuse after one year of inactivity	Lubricating oil must be added once, 10ml

24

If you have any questions, please email to ✉ [support01@acezoe.us](mailto:support01@acezoe.us)

### Adding lubricant Step

- ① Turn the treadmill to a low speed of 0.6MPH.
- ② Open the lid of the drip port and inject 10ml of lubricating oil.
- ③ Lightly step on the running belt on the front of the treadmill from left to right, then keep for about 8-10 minutes to make the silicone oil be completely absorbed by the running belt.



**NOTE:**

- Please use silicone oil not made of petroleum.
- Please do not over-lubricate to avoid insufficient friction between the running belt and the running platform.

### 7.4 Product Cleaning

- After using the product each time, please wipe the stains off the console, side strips and other parts with a clean cloth.
- If the product is used frequently, it can be wiped with a mild detergent.
- Open the motor protection cover at least once a year, vacuum the motor, and clean the running belt and lubricating silicone oil once to avoid dust accumulation affecting machine performance.



**NOTE:**

- When cleaning the treadmill, the power switch should be turned off and the power cord should be removed from the socket.
- Please do not use corrosive detergent to wipe.
- Please be careful not to splash water under the Bluetooth Speaker port and the running belt.

25

If you have any questions, please email to [support01@acezoe.us](mailto:support01@acezoe.us)

## 8. Specification

Brand	Acezoe
Product	3 in 1 Foldable Treadmill with Desk & Incline
Model	P20
Rated Voltage	110V-120V, 60Hz
Range of Speed	Treadmill Mode: 0.6-7.5MPH Walking Pad Mode: 0.6-4MPH
Running Area	39.4*15.8 inches
Folding Size	49.0*28.2*4.5 inches
Package Size	51.8*28.9*5.4 inches
Net / Gross Weight	56.9 / 65.0 lbs
Control Method	Remote Control, APP Control
Running Mode	Free Run, Countdown Mode, P01-P12 Program
Incline Mode	Yes
Desk Mode	Yes
Usage	Indoor

### Parameter Display and Setting Range

	Display Range	Setting Range	Mode Default Value	Program Default Value
Speed	0.6-7.5 MPH	0.6-7.5 MPH	-	-
Time	0:00-99:99 Mins	5:00-99:00 Mins	30:00	30:00
Distance	0 ~99.9 MI	1 ~99.0 MI	1	-
Calories	0-999 kcal	20-990 kcal	50	-

If you have any questions, please email to [support01@acezoe.us](mailto:support01@acezoe.us)

## 9. Troubleshooting

Issue	Cause	Solution
No information is displayed on the screen	1. The power is not connected 2. The switch is not turned on 3. The safety key is not in the specified position	1. Connect the power cord correctly and turn on the power switch 2. Lock the safety key back into place
Power outage during use	1. The power is not connected 2. Motor failure	1. Check power cord is connected firmly 2. Contact After-sales Team
Running belt is not centered	1. Uneven ground 2. Due to the unbalanced force on the left and right, the running belt deviates	1. Put the machine on a flat ground for use 2. Refer to the adjustment of running belt, use the Allen Key to adjust the running belt
Running belt stuck or slipped	Running belt too loose	Adjust the running belt to fit refer to the adjustment of running belt

### Error Code

Code	Causes	Resolutions
E01	1. Poor contact of the communication line of the touch console 2. No signal output from the touch console or main control	Contact the after-sales team to rewire or replace the touch console
E02	1. Loose motor cable or defective motor 2. The voltage between the motor and the main control is abnormal	1. Open the motor cover and check whether the wiring is firm 2. Contact the after-sales team to replace the motor or main control
E03	The main control detects abnormal speed, and the PMW drive circuit failed	Contact the after-sales team to replace the main control

If you have any questions, please email to ✉ [support01@acezoe.us](mailto:support01@acezoe.us)

E04	1. The machine is overloaded, exceeding the rated voltage 2. Abnormal motor 3. Over-voltage function failure of main control	1. Use within the rated voltage range of 110-125V 2. Contact the after-sales team to replace the motor or main control
E05	1. Motor over-current protection 2. Abnormal motor assembly 3. Failure of current limiting system of main control	1. Use within the rated operating current of 9.8A 2. Check whether overweight running 3. Check whether there are foreign objects stuck in the running belt 4. Pull down the safety key or press the ON/OFF button to return to normal 5. Contact customer service for repair
E06	1. The power supply voltage is too low 2. Poor contact of main control	1. Please check whether the power cord is normal 2. Check if the input voltage is lower than 120V 3. Remove the safety lock and placing it back in place
E07/---	1. The safety key is not put in place 2. Touch console safety key system failed	1. Check whether the safety key has magnetic force. Place the safety key in the designated position. 2. Check whether the socket of safety key on console is loose. If yes, contact the after-sales team to replace the console.



**NOTE:**

If the problem in your treadmill is not included in the above, while you are not sure how to solve it, please contact us (Email: [support01@acezoe.us](mailto:support01@acezoe.us)) timely and do not handle it by yourself.

If you have any questions, please email to ✉ [support01@acezoe.us](mailto:support01@acezoe.us)

## 10. Warranty

### The 2-Year Limited Warranty

- Your Acezoe machine has a 2-year warranty against original defects in material and workmanship, when used for private household purposes in accordance with the Acezoe Instruction Manual.
- This warranty provides all parts necessary to ensure your machine is in proper operating condition during the warranty period for free.

### WHAT IS COVERED?

- According to the requirements outlined in this instruction manual, subject to the following conditions and exclusions.
- Only applies to purchases made from authorized retailers of Acezoe.
- This warranty will only be valid if the machine is used in the country in which it was sold.
- Any repair or replacement shall provide no new warranty coverage, but shall retain only the remaining portion of the original product's warranty. This warranty is offered only to the original purchaser and is not transferable. Proof of original purchase is required.

### WHAT IS COVERED?

Acezoe shall not be liable for costs, damages or repairs incurred as a result of:

- Machines purchased from an unauthorized dealer.
- Careless operation or handling, misuse, abuse and/or lack of maintenance or use not in accordance with the Acezoe Instruction Manual.
- The machines are used for commercial or rental purposes in addition to normal domestic use.
- Use of parts not in accordance with the Acezoe Instruction Manual.
- Use of parts and accessories other than those produced or recommended by Acezoe.
- External factors unrelated to product quality and use, like accidental water damage.
- Repairs or alterations carried out by unauthorized parties or agents.
- Damage caused by normal wear and tear, vandalism, accidents or by animals.
- Any act of Nature (such as fire, flooding, snow, ice, hurricanes, earthquakes, lightnings or other natural disasters), environmental conditions (such as air pollution, mold, mildew, etc.), or staining from foreign substances (such as dirt, grease, oil, etc.).
- Normal weathering due to exposure to sunlight, weather and atmosphere which can cause colored surfaces to among other things, flake, chalk, accumulate dirt or stains.
- Improper operation, alteration, handling, storage, abuse or neglect of the products.



If you have any questions, please email to ✉ [support01@acezoe.us](mailto:support01@acezoe.us)

## HOW TO CLAIM?

Please keep your proof of purchase.

To make a claim under our Limited Warranty, or if there are any problems or malfunctions during use, or you still have any questions after reading this manual carefully, please feel free to contact us through email: ✉ [support01@acezoe.us](mailto:support01@acezoe.us), we will try our best to provide you with a satisfactory solution.



You need to provide the following information:

1. **Model**
2. **Order Number**
3. **Purchase Date**
4. **Description of Issues (Adding photos or videos would be helpful)**

All work will be carried out by ACEZOE or its authorized agency. Any replaced defective parts will become the property of ACEZOE.

If you have any questions, please email to ✉ [support01@acezoe.us](mailto:support01@acezoe.us)

## FCC STATEMENT :

**FCC ID: 2A48I-P20**

### NOTE:

This equipment has been tested and found to comply with the limits for a Class B digital device, pursuant to part 15 of the FCC Rules. These limits are designed to provide reasonable protection against harmful interference in a residential installation. This equipment generates uses and can radiate radio frequency energy and, if not installed and used in accordance with the instructions, may cause harmful interference to radio communications. However, there is no guarantee that interference will not occur in a particular installation. If this equipment does cause harmful interference to radio or television reception, which can be determined by turning the equipment off and on, the user is encouraged to try to correct the interference by one or more of the following measures:

- Reorient or relocate the receiving antenna.
- Increase the separation between the equipment and receiver.
- Connect the equipment into an outlet on a circuit different from that to which the receiver is connected.
- Consult the dealer or an experienced radio/TV technician for help

Changes or modifications not expressly approved by the party responsible for compliance could void the user's authority to operate the equipment.

This device complies with Part 15 of the FCC Rules. Operation is subject to the following two conditions:

- (1) this device may not cause harmful interference, and
- (2) this device must accept any interference received, including interference that may cause undesired operation.

This equipment complies with FCC radiation exposure limits set forth for an uncontrolled environment. This equipment should be installed and operated with minimum distance 0cm between the radiator and your body.

## DISPOSAL



This marking indicates that this product should not be disposed with other household wastes throughout the EU. To prevent possible harm to the environment or human health from uncontrolled waste disposal, recycle it responsibly to promote the sustainable reuse of material resources. To return your used device, please use the return and collection systems or contact the retailer where the product was purchased. They can take this product for environmental safe recycling.

## Return & Warranty Process



① Scan the QR code on the left to activate the warranty of your order.



② Send the problem description to Acezoe Team ([support01@acezoe.us](mailto:support01@acezoe.us)).



③ Acezoe Team provide the best solution includes troubleshooting, replacement parts or new machine.



④ UPS delivers the package to you or Amazon refunds you.

**Contact US** | [✉ support01@acezoe.us](mailto:support01@acezoe.us)

Please feel free to contact us if you encounter any problem, we'll try our best to give you a satisfied solution.

## ISED Statement

- English: This device contains licence-exempt transmitter(s)/receiver(s) that comply with Innovation, Science and Economic Development Canada's licence-exempt RSS(s). Operation is subject to the following two conditions:

(1) This device may not cause interference.

(2) This device must accept any interference, including interference that may cause undesired operation of the device.

- French: Cet appareil contient des émetteurs/récepteurs exempts de licence qui sont conformes aux CNR exempts de licence d'Innovation, Sciences et Développement économique Canada. Le fonctionnement est soumis aux deux conditions suivantes :

(1) Cet appareil ne doit pas causer d'interférences.

(2) Cet appareil doit accepter toute interférence, y compris les interférences susceptibles de provoquer un fonctionnement indésirable de l'appareil.

This equipment complies with Canada radiation exposure limits set forth for an uncontrolled environment.

This equipment should be installed and operated with minimum distance 0cm between the radiator & your body.

Cet équipement est conforme Canada limites d'exposition aux radiations dans un environnement non contrôlé.


Cet équipement doit être installé et utilisé avec une distance minimale de 0 cm entre le radiateur et votre corps.




Contact us - We will get back to you within 1 business day.

### Contact Information

You  



 [www.acezoe.us](http://www.acezoe.us)

 [support01@acezoe.us](mailto:support01@acezoe.us)



MADE IN CHINA

**IMPORTANT:** Read all instructions carefully before using this product. Retain this owner's manual for future reference.

Ver 1.1

Project No.		Sales Rep.		Engineer	Axin	ACEZOE
Project Name	说明书 (US)	Design View	Outside	Output Date	2025.3.25	

140mm

ACEZOE

3 in 1 Foldable Treadmill with Desk & Incline

User Manual

Model P20



Born for a Healthier Life !

210mm

名称: Acezoe\_P20跑步机\_说明书 (US)

材质: 157g铜版纸+覆哑膜

印刷: 4C印刷

工艺: 骑马订

用量: 1

公差: +/-1mm

Note: The components with fluted relationship conform to the rules of finished-dimension tolerances and meet the tightness requirements from customer between these parts simultaneously.

GENERAL TOLERANCE TABLE (Unless otherwise specified) (mm)				
	Right Box	Card board, plastic sheet	Single wall board	Double wall board
(0~100)				
(100~200)				
(200~300)				
(300~600)				
(600~1000)				
>1000				

Cut

Crease

V-groove

Partial cut

Annotation

Generic perf

Glue on outside

Glue on inside

Tape on outside

Tape on inside

Flute/Grain  
Direction  
(Unless otherwise specified)



Drawing No.

Pack Style

Version

Unit

O.D Assem.

Scale

1: 1

05

04

03

02

01

00

Rev 1.0