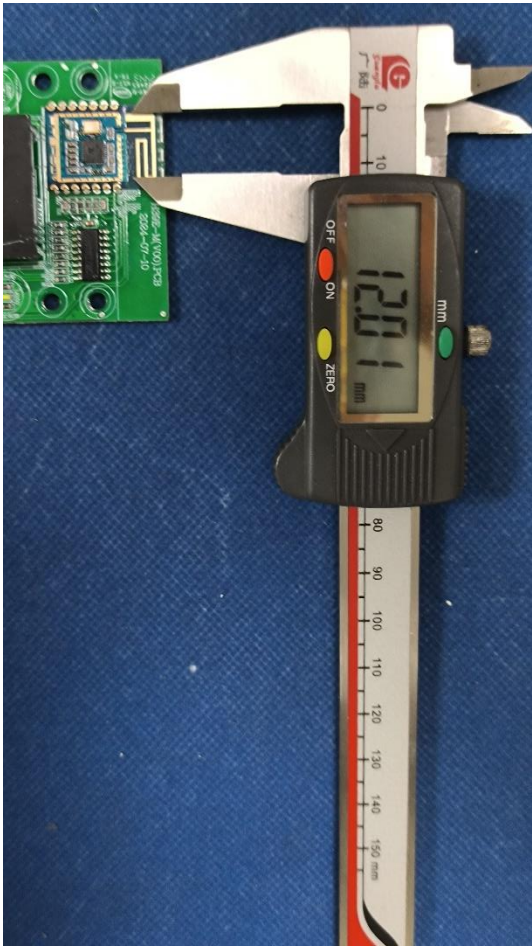


1. Antenna Description:

Antenna type	PCB antenna
Model	P20
Frequency range	2400-2500MHz
Manufacturer	Ningbo Jiufeng Electrical Appliance Co., Ltd.
Address	No. 268 Binhai road, Binhai New Area, FengHua economic development zone, Ningbo, Zhejiang, China
ANT Peak Gain	0.82 dBi

2. Antenna Photo:

Length:12.01mm
Width:5.43mm



3. Test Equipment & Conditions

3.1 Test instrument

VSWR is tested using Agilent E5071B connected to a hand mechanism, and the status is free space.

3.2 Test environment and methods

Dark room specifications: ETS-743

TD-SCDMA test equipment: StarPoint SP6010/Agilent 8960

LTE-TDD/FDD-SCDMA test equipment: StarPoint SP8011/CMW500

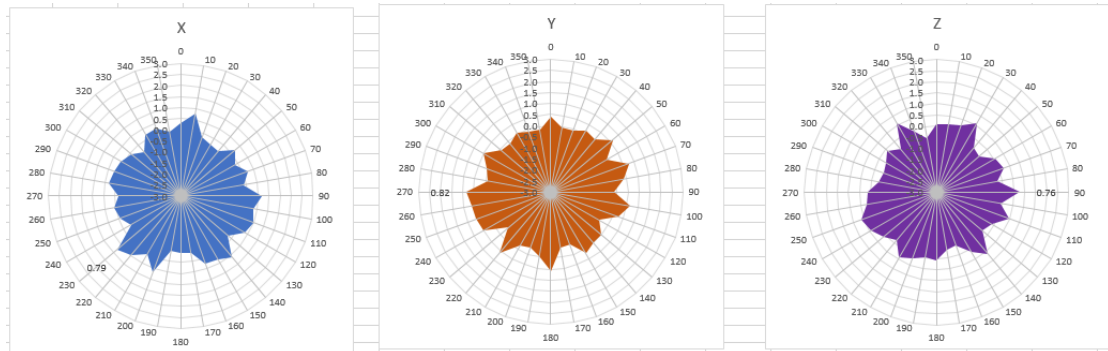
WCDMA/GSM/CDMA test equipment: Agilent 8960

Passive efficiency testing equipment: Agilent Technologies E5071B

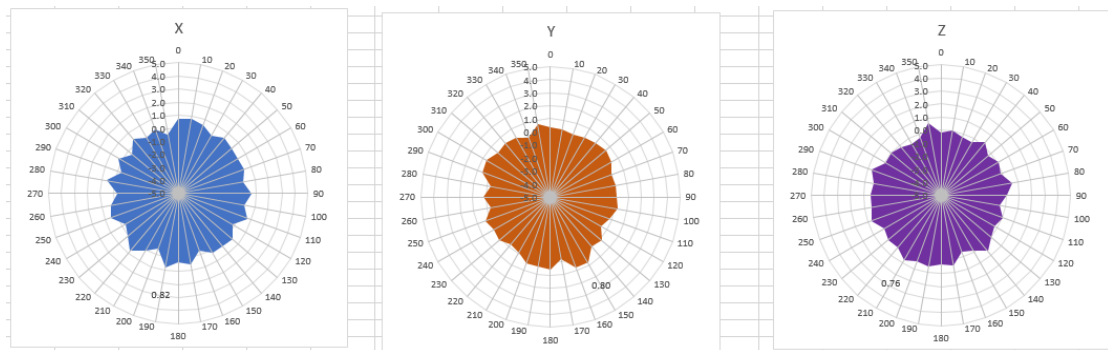


4 . Antenna Radiation Pattern

2400MHz



2450MHz



2500MHz

