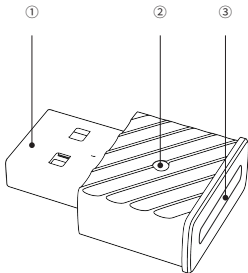


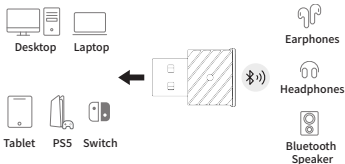
Product Description



- ① USB 2.0
- ② Indicator
- ③ Reset Button.

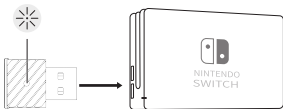
Press and Hold for 3s: Factory Reset

Connection Principle



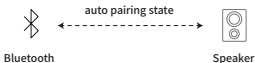
Note: The transmitter is specifically designed for wireless audio transmission and is not suitable for data devices such as mice, keyboards, game controllers, or printers.

Instructions



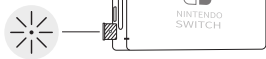
1. Connect and Bluetooth pairing

Turn on your Nintendo Switch or PlayStation and insert the transmitter into the USB port. The indicator light will flash red for 3 seconds, indicating that the transmitter is powered on.



Once the connection is successful, the indicator light will stay solid red, indicating that the device is ready for use.

Red light always on



2. Two-way audio transmission

When the transmitter is connected to your computer (Windows), the system will automatically set H9 (transmitter model) as the default audio output and input device. Once paired with a Bluetooth headset, it supports both audio playback and microphone input, allowing two-way communication.

Due to system limitations, microphone functionality is not supported on any Bluetooth audio device when used with the Switch. Only audio output is available.

If it is a Type C port device, the Bluetooth adapter can be used with the USB-C conversion interface.

3.Reset

Insert the transmitter into the device, press and hold

for 3 seconds until the red light flashes 3 times, followed by alternating red and blue flashes, indicating that the reset is complete.

Notes

1. The transmitter defaults to the highest supported audio codec format. It natively supports SBC/Aptx/Aptx HD/Aptx low latency/Aptx adaptive/Aptx lossless, and will adapt according to your headphone configuration. Please note that both your source device and headphones must support these codecs to work properly.
2. The transmitter will automatically reconnect to the last paired device when powered on again.
3. In pairing mode, if no successful connection is established within 5 minutes, the transmitter will automatically return to reconnect mode
4. When connecting, the Bluetooth device

should be placed around the product with an effective distance of 10 meters

5. If connection issues persist, restart both the transmitter and your Bluetooth device.

Operating Status	Indicator Sign
Transmitter On	blinks red for 3 second
Transmitter Pairing	blinks red and blue
Transmitter Connected	The red light keeps on
Device turned off or device and transmitter out of distance	blinks blue for 3 second
Press and hold for 3S to restore factory settings	blinks red for 3 second, then the red and blue lights flash alternately

Specifications

Model: H9

Input: acoustic signal of 1KHz, 0dBFS

Output: acoustic signal of 1KHz, 0dBFS

Power supply: $5 \pm 0.25V$

Operating current: $< 45mA$

Frequency range: 2400MHz-2483.5MHz

Frequency response: 20Hz-20kHz

SNR: $> 90dB$

THD: $< 0.1\%$

Codec: SBC

Transmission distance: 10m

Warning:

Changes or modifications to this unit not expressly approved by the party responsible for compliance could void the user's authority to operate the equipment.

NOTE: This device complies with part 15 of the FCC Rules. Operation is subject to the following two conditions: (1) This device may not cause harmful interference, and (2) this device must accept any interference received, including interference that may cause undesired operation.

FCC Statement:

This equipment has been tested and found to comply with the limits for a Class B digital device, pursuant to part 15 of the FCC Rules. These limits are designed to provide reasonable protection against harmful interference in a residential installation. This equipment generates, uses and can radiate radio frequency energy and, if not installed and used in accordance with the instructions, may cause harmful interference to radio communications. However, there is no guarantee that interference will not occur in a particular installation. If this equipment does cause harmful interference to radio or television reception, which can be determined by turning the equipment off and on, the user is encouraged to try to correct the interference by one or more of the following measures:

- Reorient or relocate the receiving antenna.
- Increase the separation between the equipment and receiver.
- Connect the equipment into an outlet on a circuit different from that to which the receiver is connected.
- Consult the dealer or an experienced radio/TV technician for help.

The equipment complies with FCC Radiation exposure limit set forth for uncontrolled environment.

This equipment should be installed and operated with minimum distance 20cm between the radiator and your body.