

尺寸：7.5*110mm

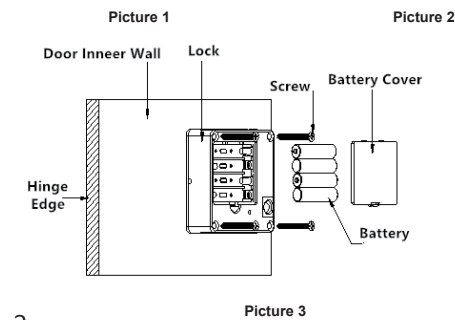
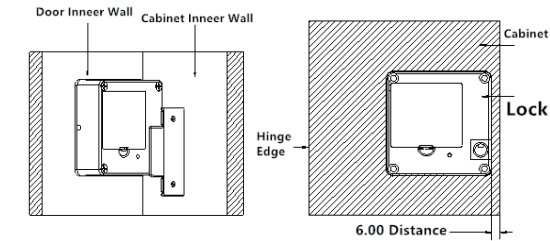
Universal Hidden RFID Electronic Cabinet Lock Manual

1

1、Installation of the fan door

1.1 Install Electronic Lock

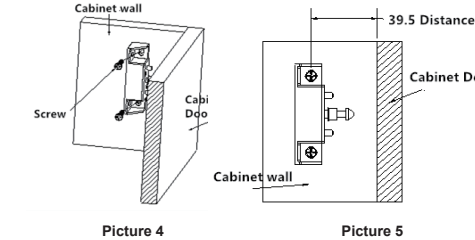
Keep the lock ,to find the location of the lock (refer to the image two),use 4 self-tapping machine screw(4*40)to fixed it and push 4 section number 7 alkaline batteries into the lock..



2

1.2 Install Lock catch

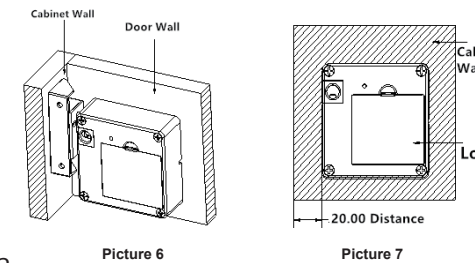
Keep the lock and in the door cabinet wall inner to find the right height(refer to the image five)in case the lock catch can't close the door;At last use two round head self-tapping machine screw(4*20) to fixed it .



2、Shift door installation

2.1 Install Electronic Lock

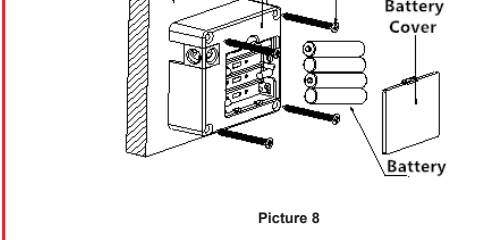
Keep the lock and in the door cabinet wall inner to find the right height(refer to the image seven)At last use four Self-tapping machine screw(4*40) to fixed it .At last push 4 section number 7 alkaline batteries into the lock.



3

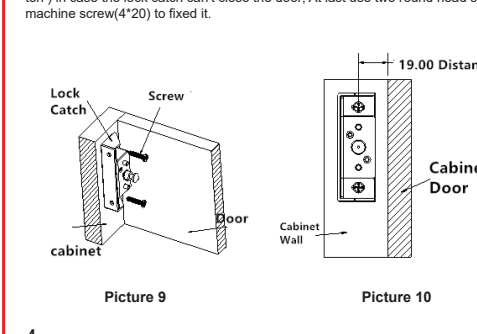
2.2 Install Lock catch

Keep the lock and in the door cabinet wall inner to find the right height(refer to the image ten) in case the lock catch can't close the door; At last use two round head self-tapping machine screw(4*20) to fixed it.



2.3 Set User Card

After the management card reads successfully, the lock beeps "Di" in an unlocked state, new user card can be configured. The put new card on the sensing area until you hear a short beep(successful setting sign). The user card can be set continuously (up to 10 pcs).

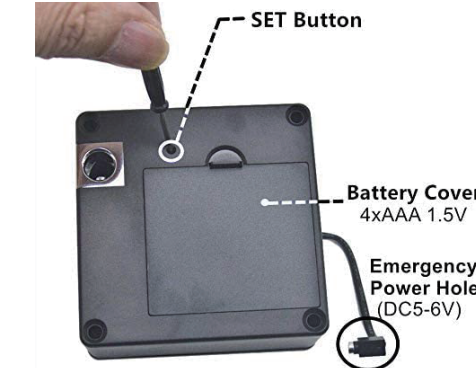


4

3、Card Lock Operation

3.1 Initialization

- ① After installing the battery, hold on the RESET button (inserting a small hard object into the hole on the lock core).
- ② Loosen the button when you hear a sound of"beep". At this moment, the lock is initialized(all cards of the lock are cleared) and in the single-card-unlocking mode.
- ③ If you press on the button again during the 5 short sounds of"beep" and loosen it when you hear double sounds of"beep", the lock would be into the double-card-unlocking mode.



3.2 Set Management Card:

After initializing, the first card (RFID Card) is swiped in the sensing area of the lock body. Management Card works after a sound ("DI-DI") is made, Management card can be used to unlock the cabinet door, add or delete the user card.

5

3.3 Set User Card

After the management card reads successfully, the lock beeps "Di" in an unlocked state, new user card can be configured. The put new card on the sensing area until you hear a short beep(successful setting sign). The user card can be set continuously (up to 10 pcs).

4、QA about Lock

① What is the rfid lock made of ?

Stainless steel latch and ABS plastic lock body, durable and anti-corrosion

② What specific rfid cards does this locker require?

M1 13.56MHz Card

③ What is the wire cable sticking out the box used for?

The cable is external power supply for emergency. When installing the cabinet lock, you could leave the cable outside for emergency to get power(the other way is powered by 4pcs AAA batteries)

④ How long do the batteries last?

Normally a qualified battery will last for 8 months, so it is advised that you can regularly replace the battery, such as once every six months, so as to avoid unnecessary trouble for you.

At the same time, when the battery is about to run out, it will alarm and a "beep" beep sounds continuously for 8 beeps to remind you to replace the battery.

5、QA about Application:

① Will this electronic drawer lock serve for door?

Please be noted: this rfid lock is not for door, but ONLY used for wooden cabinet door / drawer / lockers / pantry / cupboard etc.

② can it be used in a toolbox? outdoor low temperatures.

The toolbox is wooden? Please kindly noted this rfid lock is only used for wooden cabinet door / drawer /lockers.

6

③ Where can i install this rfid lock?

This is a mini intelligent cabinet lock, which can be installed in the lockers or drawers for home, gym, supermarket, school, etc.

6、QA about Operation

① How can i install this cabinet lock rfid?

This cabinet lock include the screws, you just use a screwdriver to secure the lock in the appropriate place of the cabinet. No Drilling. Easy to install.

② How to add a card?

Take the Master card to contact the card reader, then sound "beep". You can add unlocking cards within 5 seconds, take another card to contact the card reader, one short sound of "beep" indicates the card is read and set as unlocking card successfully. You can add cards continuously, and 10 unlocking cards can be set at maximum.

③ How to do all the locks with the same key?

Please use the management card to sense the lock and then quickly sense the key. Use the same way to set another lock.

④ What kind of voltage do you need on the usb cord?

Usually it is about 5V. You can use the USB adapter to connect it. (The USB cable is included in the package for your convenience)

7、Case You May have

① I accidentally locked the cabinet without installing the battery. I am unable to open it now. What can I do to open it?

Sorry. No way. You have to break the cabinet to open. Thanks.

② Why the door open automatically?

Because the batteries are too weak to operate, please replace the batteries before the key-less cabinet lock can be used again.

7

③ How to open my drawer if the rfid hidden drawer lock has been installed to use for a month then it suddenly stopped working?

Attention: Do not swipe the management card 9 times continuously, it will turn off the low-power unlock function.

④ Why the lock come used with batteries in it?

Please be noted that this rfid lock order will not come with the batteries. All packages have been kindly and carefully checked, including the items quality, accessories...before sending to Amazon Warehouse. Then the Amazon warehouse deliver the order to your order address. If you have this experience, dont worry, just contact us for replacement. You are the top.

⑤ Can't get them to work only on 2.5 mini jack / usb with 5v. only battery option works. am i doing something wrong?

You can use two pole 2.5 jack, length is 11.55mm. If you can't get this jack, you can cut off the cable, and connect directly without jack. But please make sure connect cathode&anode correctly. And when you use USB to power, please take out batteries.

⑥ What happens if the batteries go dead while it is locked?

It will unlock automatically shortly before the batteries go dead. And there will be warning beep to remind you while it is in lower power status. Thanks.

⑦ Can use only a power adapter and no batteries?

It will unlock automatically shortly before the batteries go dead. And there will be warning beep to remind you while it is in lower power status. Thanks.

⑧ Now 2 of the key fobs and both key cards do not work and I only have one left. What should I do?

Yes, the proximity card(also called IC card, its frequency is 13.56MHZ) should be reconfigured. Highly Noted: When re-configuring the card, do not close the cabinet door. Prevent it from being unavailable. Set up the card and test the induction lock without any problems before closing the door and proceeding to normal operation.

8

FCC Caution:

This device complies with part 15 of the FCC Rules. Operation is subject to the following two conditions:
(1) This device may not cause harmful interference.
(2) this device must accept any interference received, including interference that may cause undesired operation.

Any Changes or modifications not expressly approved by the party responsible for compliance could void the user's authority to operate the equipment.

Note: This equipment has been tested and found to comply with the limits for a Class B digital device, pursuant to part 15 of the FCC Rules. These limits are designed to provide reasonable protection against harmful interference in a residential installation. This equipment generates uses and can radiate radio frequency energy and, if not installed and used in accordance with the instructions, may cause harmful interference to radio communications. However, there is no guarantee that interference will not occur in a particular installation. If this equipment does cause harmful interference to radio or television reception, which can be determined by turning the equipment off and on, the user is encouraged to try to correct the interference by one or more of the following measures:

- Reorient or relocate the receiving antenna.
- Increase the separation between the equipment and receiver.
- Connect the equipment into an outlet on a circuit different from that to which the receiver is connected.
- Consult the dealer or an experienced radio/TV technician for help.

RF warning for Portable device:

The device has been evaluated to meet general RF exposure requirement. The device can be used in portable exposure condition without restriction.

9