

展开尺寸：450*75mm 折叠尺寸：75*75mm

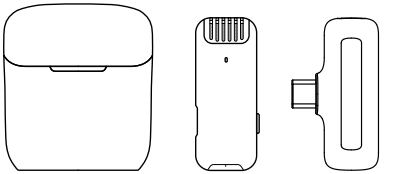
Wireless Microphone

User Manual



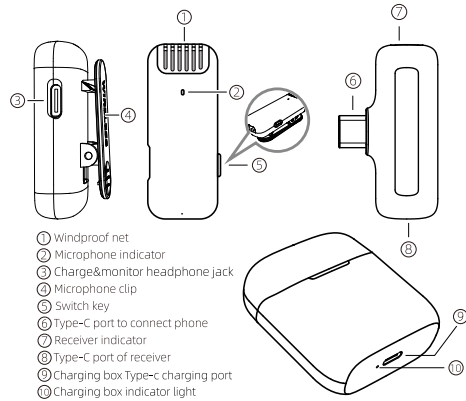
Introduction

Thanks for choosing our product.
This product is a smart wireless microphone that provides professional-grade recording output.Plug and play, no app required.
Multiple uses: It can be used in online live broadcast video Vlog shooting, program interview, recording, video teaching and other occasions.
The wireless Microphone consists of two parts, one is Microphone Transmitter,the other one is receiver. (See as below picture)
***Some mobile phone apps do not support external microphones, which will cause silent recording. In this case, please replace the app and continue to use the product.**



(Charge warehouse) (Microphone transmitter) (Type-C receiver)

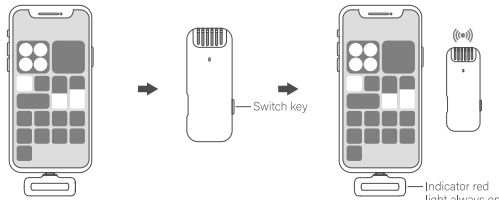
ID Diagram



*****Some Android phones may have incompatibility problems due to system , please consult your dealer for details*****

How to use

Step 1: Connect the receiver to the phone interface.
Step 2: Press switch key of microphone 2s , the indicator light turns blue , and then power is turned on.
Step 3: After successful automatic pairing, the red light at the receiving end is always on and the blue light at the transmitting end is always on. Then open the phone camera,live App or other Apps,and then to use the microphone to receive sound.



*Connect receiver to phone *Press microphone switch key *Use microphone

About UI

Function	How to use	Light
Power on	Press switch key 2s	Blue light on
Power off	Press switch key about 3 seconds	Lights out
Charging	Charging with data line & Charge warehouse	Red light keeps on when charging and light off when fully charged
Pairing		Blue light flashes slowly
Paired		Blue light keeps on
Noise reduction mode	Briefly press the power key in the connected state (noise reduction by default)	Blue light /Green light
Low battery alarm	Battery is below 20%	Red light flashes slowly
Reset	Press and hold the power key	
monitor	Plug the matching headset into the monitoring port	

Function	How to use	Light
Power on	Plug in the device	Red light on
Power of	Plug off the device	Light off
Pairing		Red light flashes slowly
Paired		Red light keeps on

Packing List

Content of packing
(1) Microphone transmitter
(2) Receiver
(3) Monitor earphone
(4) User manual
(5) Storage box
(6) Charging line

This device complies with Part 15 of the FCC Rules. Operation is subject to the following two conditions: (1) this device may not cause harmful interference, and (2) this device must accept any interference received, including interference that may cause undesired operation

NOTE: This equipment has been tested and found to comply with the limits for a Class B digital device, pursuant to Part 15 of the FCC Rules. These limits are designed to provide reasonable protection against harmful interference in a residential installation. This equipment generates, uses and can radiate radio frequency energy and, if not installed and used in accordance with the instructions, may cause harmful interference to radio communications. However, there is no guarantee that interference will not occur in a particular installation.

If this equipment does cause harmful interference to radio or television reception, which can be determined by turning the equipment off and on, the user is encouraged to try to correct the interference by one or more of the following measures:

- Reorient or relocate the receiving antenna.
- Increase the separation between the equipment and receiver.
- Connect the equipment into an outlet on a circuit different from that to which the receiver is connected.
- Consult the dealer or an experienced radio/TV technician for help.

Warning: changes or modifications not expressly approved by the party responsible for compliance could void the user's authority to operate the equipment