

EUT Internal Photos

Figure 9
Internal View (Removed Dipole Antenna)



Figure 10
Internal View (Removed Cover)



Figure 11
Internal View

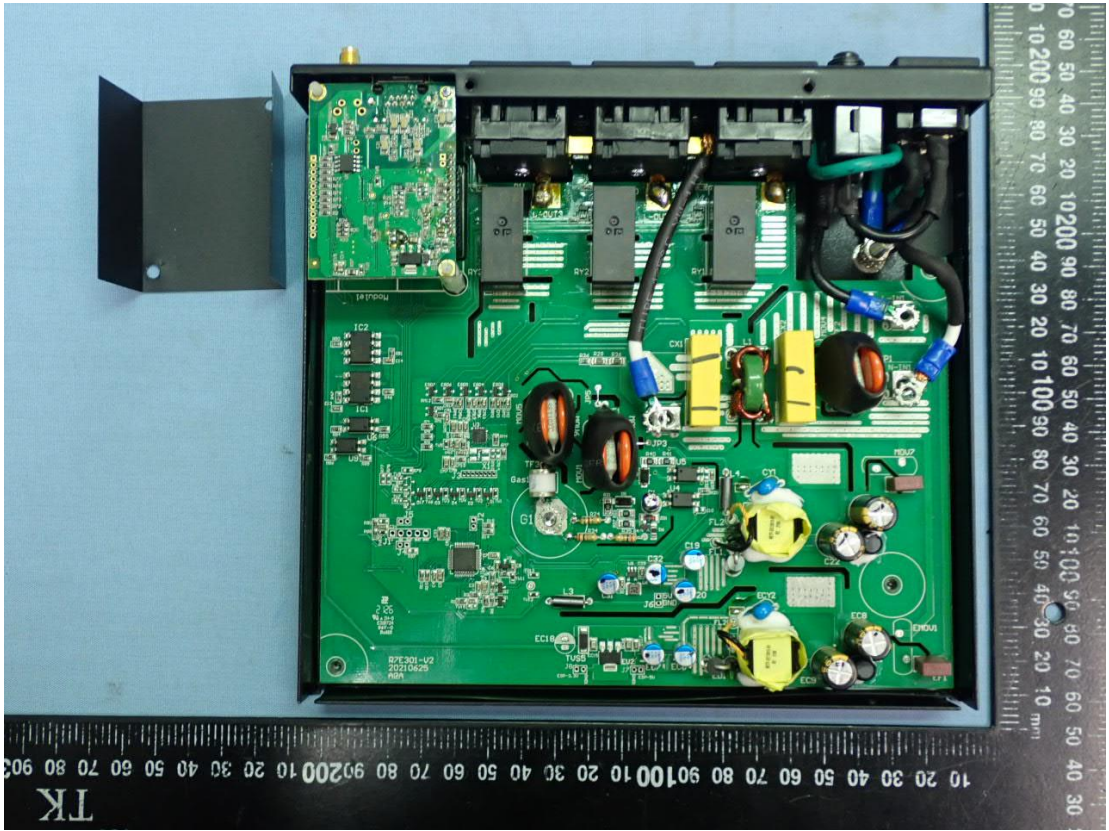


Figure 12
Internal View

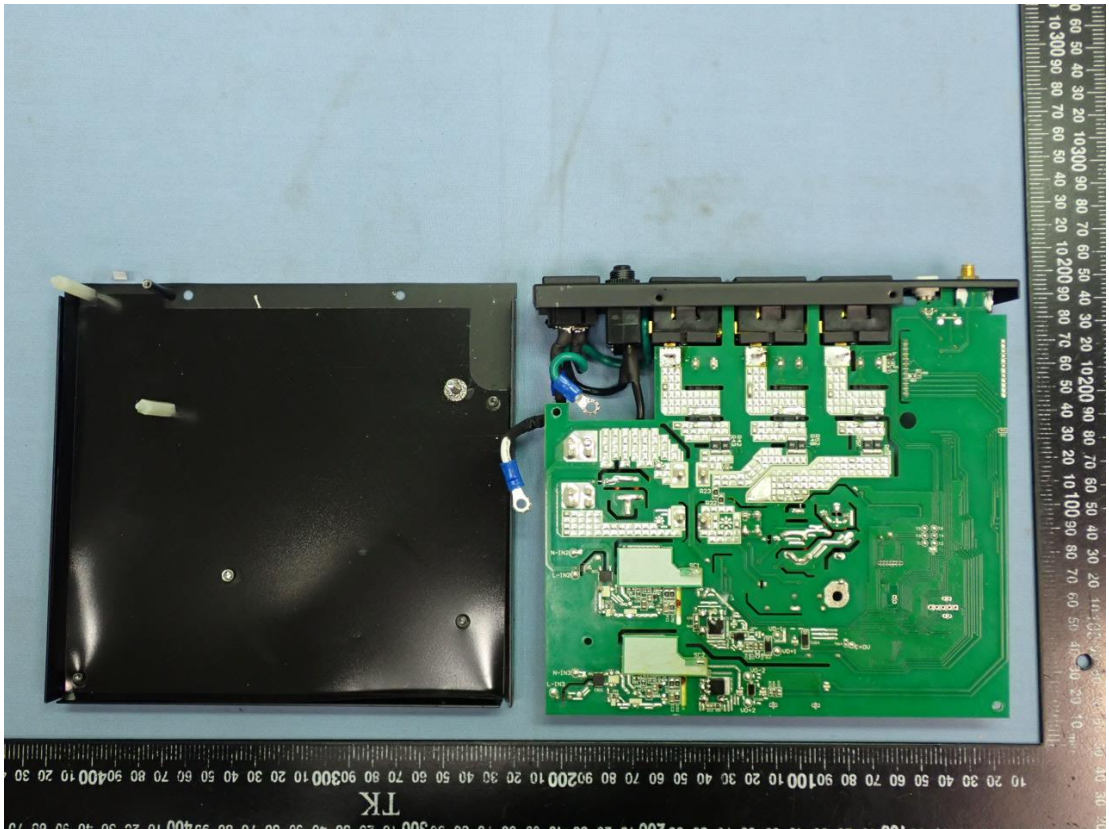


Figure 13
Main Board, Front View

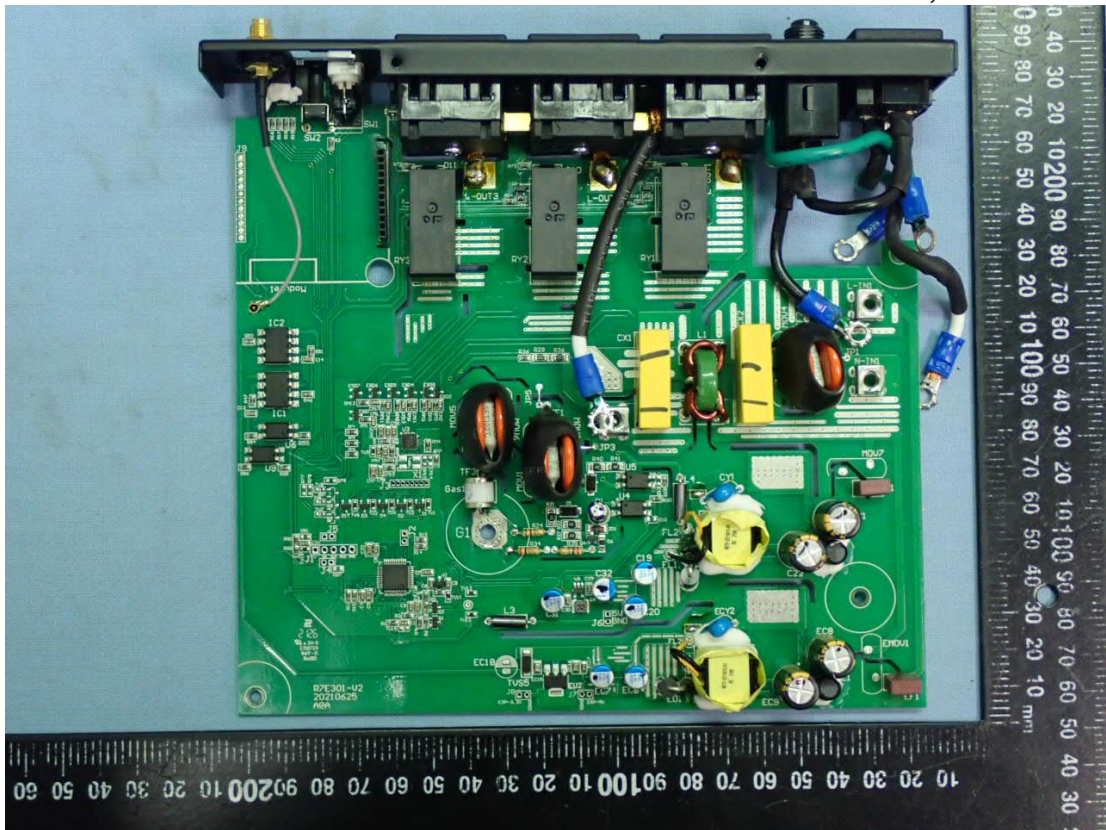


Figure 14
Main Board, Back View

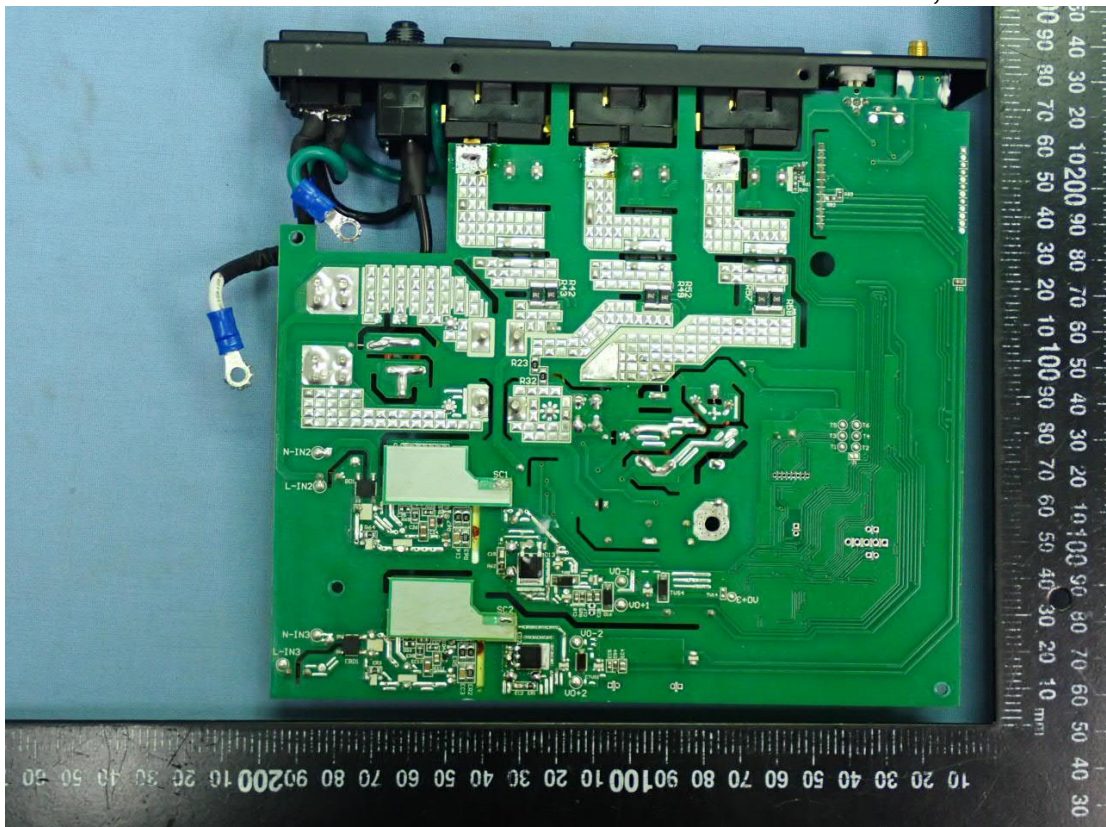


Figure 15
Internal View

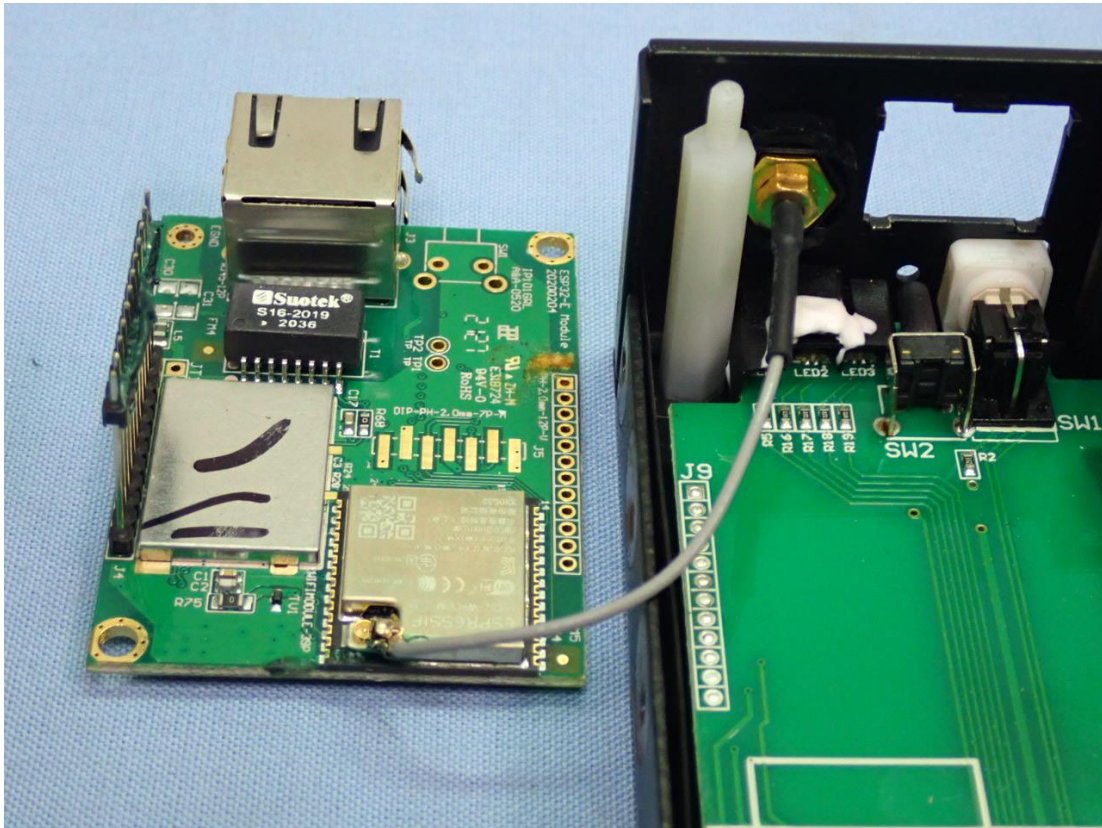


Figure 16
Internal View (RF Module)



Figure 17
PCB, Front View

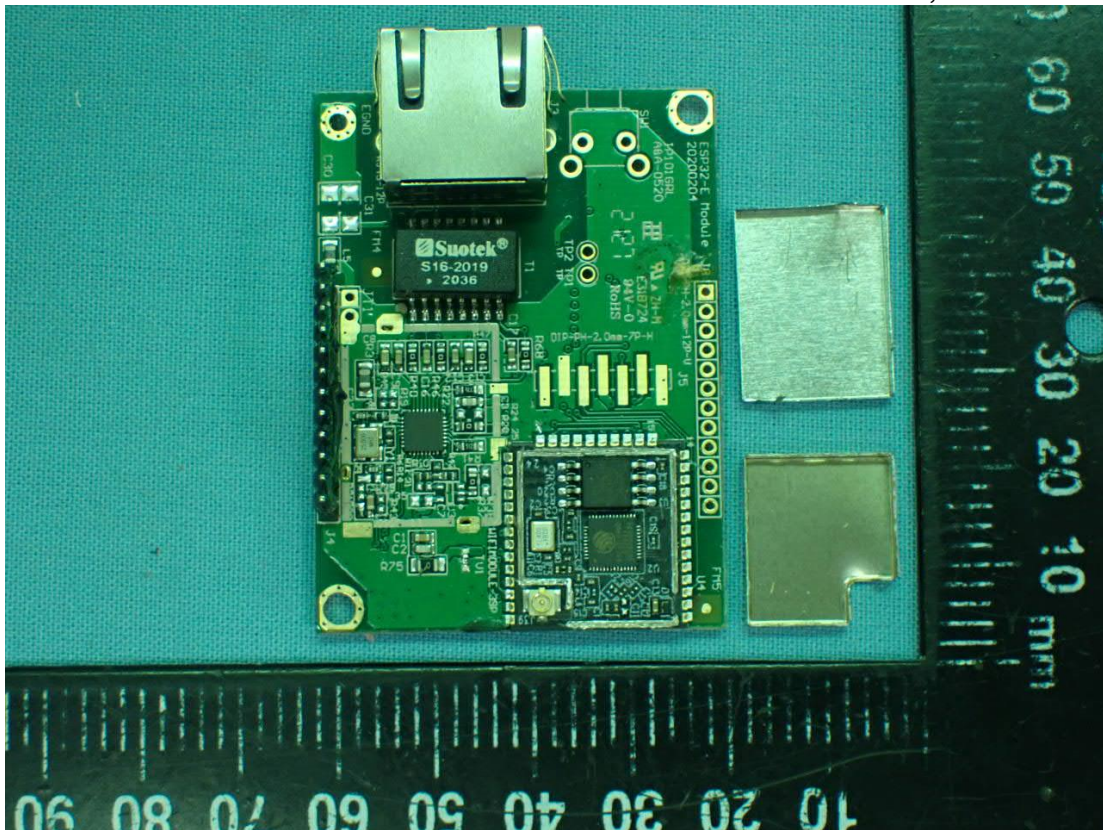


Figure 18
PCB, Back View

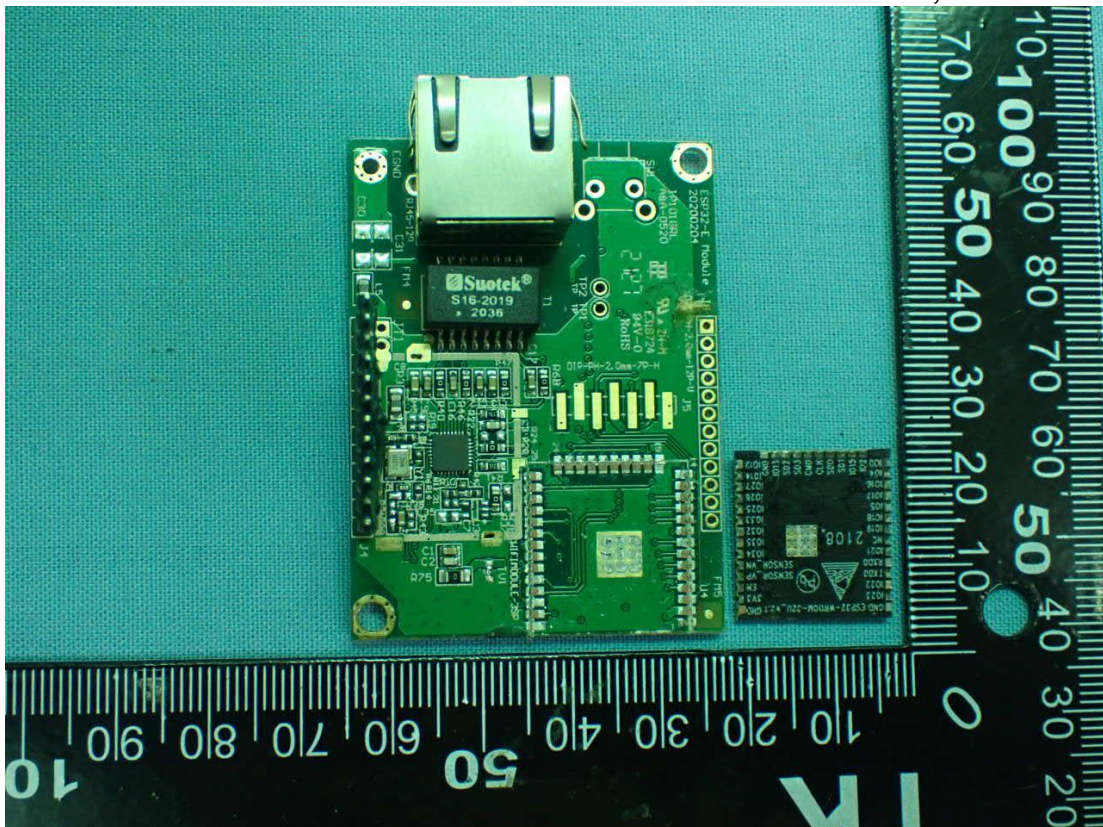


Figure 19
RF Module, Front View

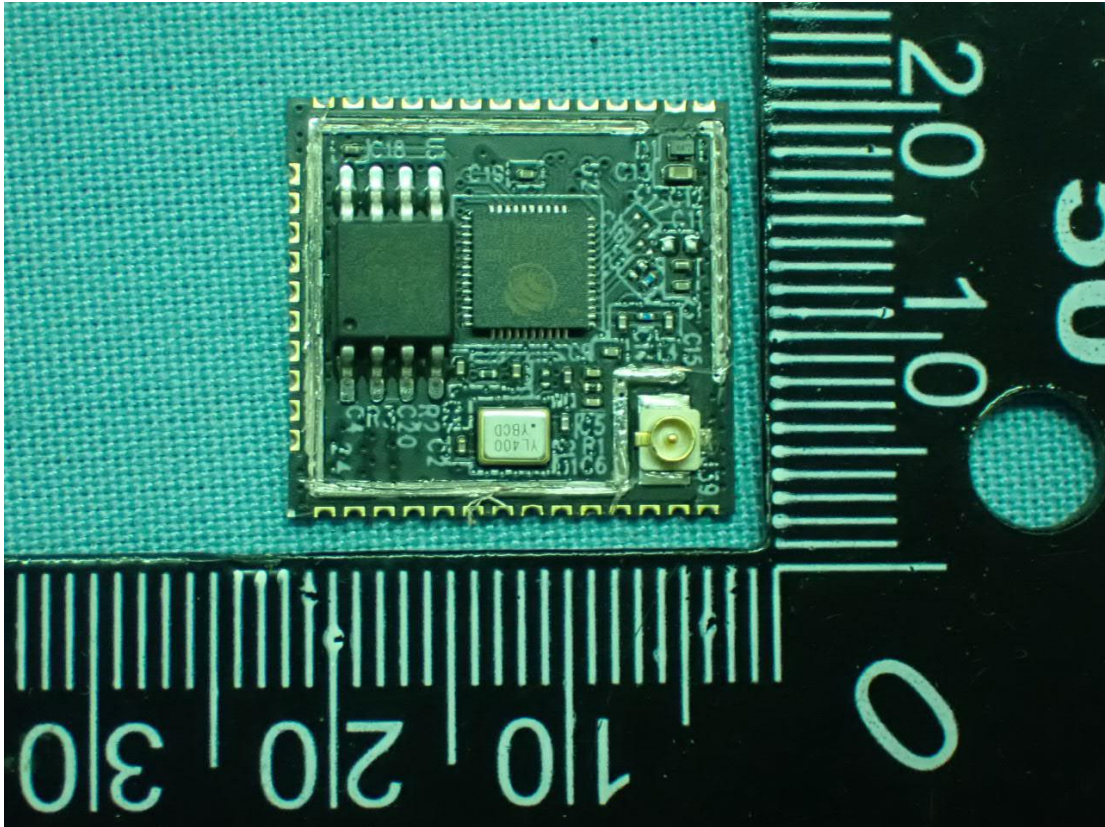


Figure 20
RF Module, Back View

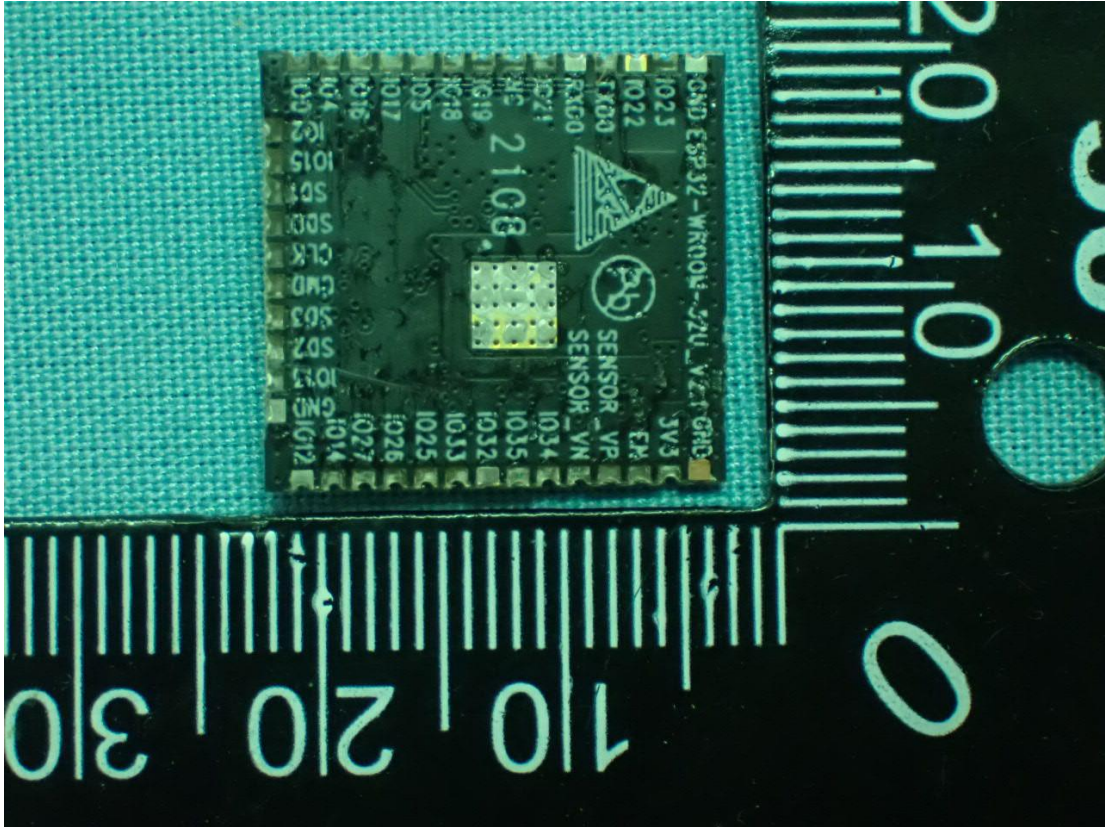


Figure 21
RF Module, RF IC View



Figure 22
RF Module, Crystal View

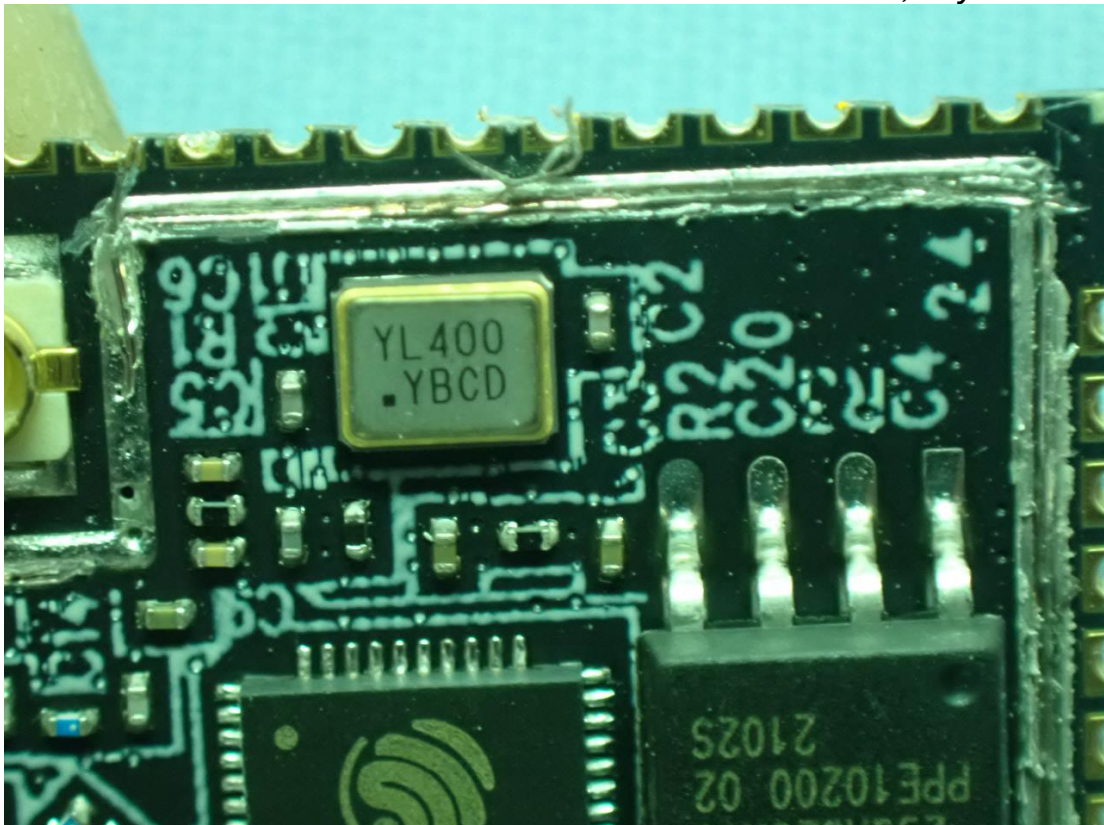


Figure 23
RJ45 Network IC & Crystal View

